

NTS

826847
92L/08E

ADAM RIVER Cu-Ag MINERAL PROSPECT

LOCATION: N.T.S. 92L/8E Lat. 50°18'N Long. 126°03'
Nanaimo Mining Division; Elevation: 800-2500 feet
Mineral Inventory No: 92L#167

ACCESS: The Adam claim is situated about 10 miles SW of Sayward and is accessible by car across the White River bridge via a gravel logging road.

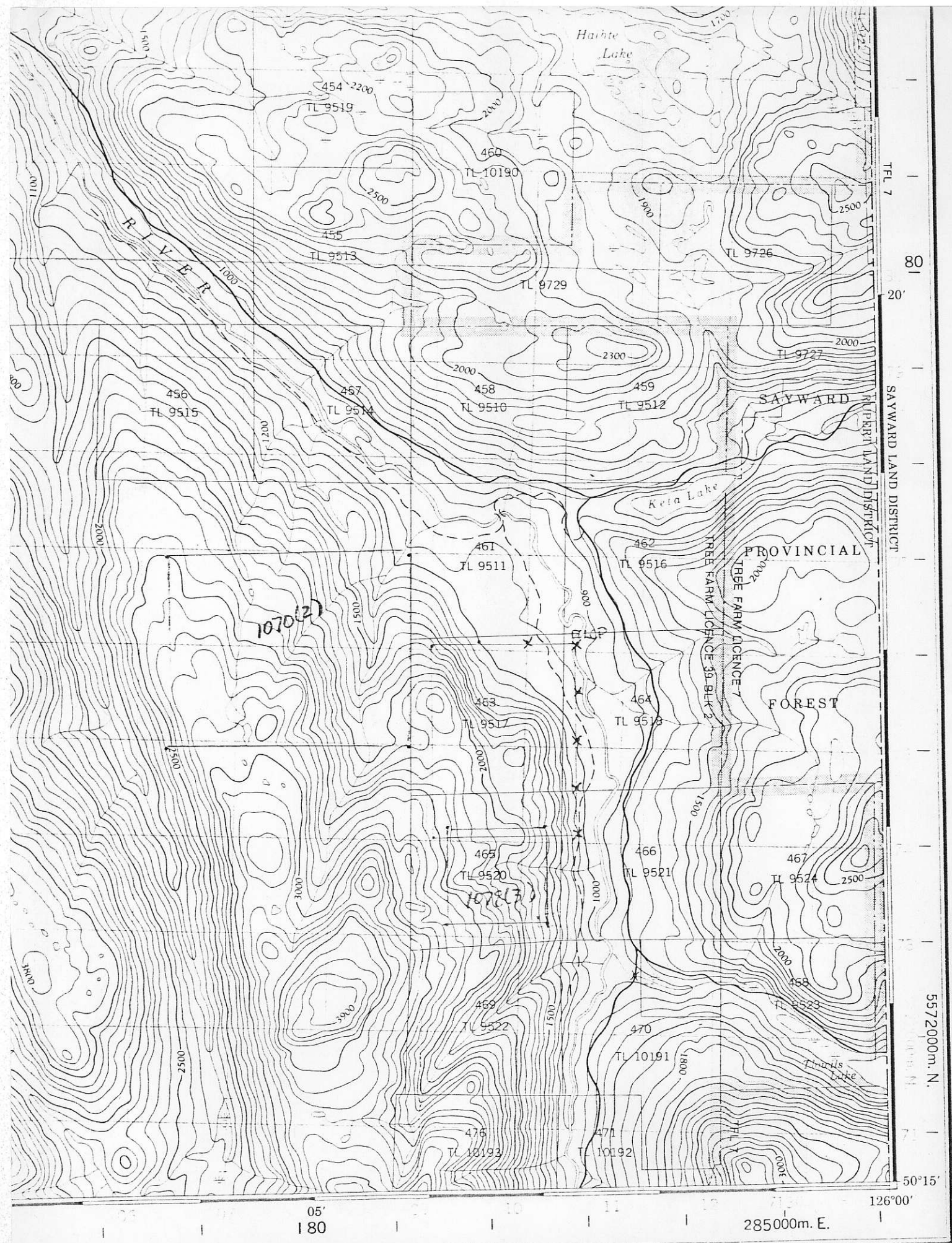
PROPERTY DEFINITION: The prospect is covered by the Adam claim (Tag No: 86848) consisting of 12 units (4Sx3W) recorded on February 1983. The claims adjoin the "Boyes" claim to the south and the "Wolf" claims to the north.

REGIONAL GEOLOGY: The claims are underlain by a NW trending homoclinal sequence of Upper Triassic of basalts, argillites and limestone in faulted contact with Middle Jurassic Adam River batholith (Muller et al 1974). The western margin of the batholith comprises a mineralized belt hosting several occurrences of disseminated copper in volcanics and copper bearing shears on quartz-carbonate veins. A band of Quatsino-limestone, which is continuous with the intrusive contact, is of special significance as a potential host for copper-precious metal skarn deposits.

PROPERTY GEOLOGY: On the Boyes mineral claim, chalcopyrite, chalcocite and bornite occur in N80°W trending shear zones, averaging 4 feet in width and grading 3.9% Cu with associated precious metal values (Sharp, 1969). On the Adam claim, chalcopyrite and bornite occur as disseminations and in amygdules basaltic flows interbedded with limestone. A geochemical soil survey, assessment report #3235 delineated several copper soil anomalies (>200ppm) which are broadly coincident with the limestone. One anomaly measures 2400x1000 feet with copper concentrations in excess of 300ppm. A recce I.P. survey by Cochrane, 1971, indicated an anomalous response broadly coincident with copper anomalies. Further investigation appears to be warranted, with particular emphasis on the limestone-granite contact with its attendant potential for polymetallic skarn mineralization.

REFERENCES:

- Muller, J.E., Northcote K.E and Carisle D, 1974, Geology and Mineral Deposits of Alert Bay-Cape Scott Map-area, Vancouver Island, B.C.; G.S.C. paper 74-8
- Sharp, W.M., 1969, Geological report on the Boyes copper prospect, assessment report #1993.
- Cochrane, D., 1971, Geophysical report on an induced polarization survey of the Boyes Creek-Adams River prospect; assessment report #3403.
- Mothershead, B., 1971, Preliminary geochemical survey of the Sayward property; assessment report #3235.



DESIGNATION	LA 2
DU QUADRANT	9
TOWNSHIP	7
RANGE	80
SECTION	20'
REFERENTIAL POINT	
EASTING	immediat
LONGITUDE	du quadr
Estimate	this lin
Estimate	entre c
NORTHING	immediat
LATITUDE	du quadr
Estimate	this lin
Estimate	entre
GRID REFERENCE	
Scale	1:50,000
B	
LES TR	
LE Q	
TAE	
127°	
50°45'	
5572000m. N.	
7	
50°15'	
50°00'	
127	

Établie par la DIRECTION DES LEVES ET DE LA CARTOGRAPHIE, MINISTERE DE L'ENERGIE, DES MINES ET DES RESSOURCES. Mise à jour d'après des photographies aériennes prises en 1972, provenant de la DIRECTION DES LEVES ET DE LA CARTOGRAPHIE, MINISTERE DES TERRES, DES FORÊTS ET DES RESSOURCES HYDRAULIQUES DE LA COLUMBIE BRITANNIQUE. Révisé en 1974. Remplacement 1.