

ABC Bluechip

KERR ADDISON MINES LIMITED

(FOR INTER-OFFICE USE ONLY)

826751

To File 92 H/5E From Tor Bruland

Subject Examination at Laidlaw Date June 1, 1985

Examination of area south of Laidlaw/for Laidlaw 2-Au

Location: The showing referred to in Min.Dep.File 92H/SW 103 is located south of Laidlaw. The showing was not located, but a shear zone in argillite from the Chilliwack group was sampled. This showing is located 36.65 km from Harrison Hot Springs Post Office by Provincial Highway, Trans Canada and gravel road to the north west slope of Mount Devoy, Lat. 49°18' and Long. 121°37' (figure 1).

Access: Access is via Provincial Highway 9 south from Harrison Hot Springs to Trans Canada and east to Laidlaw and then south to the northwest slope of Mount Devoy. Harrison Hot Springs Post Office is 0 km. Turn east on Trans Canada at 14.8 km and right at Laidlaw at 31.9 km and right past Jones Creek towards Jones Lake at 32.7 km. Left at 35.25 km. Showing is located in roadcut at 36.65 km. 4 wheel drive is recommended from 32.7 km to 36.65 km.

History: The showing in the area is known from the Min.Dep.File, but no geological description is given there. It is a Au showing (figure 2).

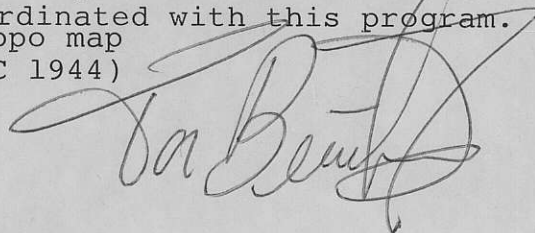
Geology: The sample is collected from a shear zone in argillite from the Chilliwack Group of Carboniferous age or later from map 737A (Cairnes 1944, GSC).

The showing is located about 1.5 km from the quartz diorite contact to the east in argillite as a shear zone. The shear zone is 15 cm wide N022E/65NE with Fe-oxide and graphite.

Recommendation: One sample was collected from the argillite shear with Fe oxide and graphite by Kerr Addison.(figure 1). The sample will be analysed for Au and Ag. Depending on encouraging results from this sample or sample from Laidlaw/Blue Chip, follow up prospecting and geological mapping should be done. The area seems to be open for staking and should be staked prior to prospecting and mapping.

Conclusion: The grab sample from the shear zone returned 1.0 g/tonne Ag, while grab sample of quartz vein from the Blue Chip showing outside the adit returned 12.3g/tonne Au. Two claims of 21 units have been staked, covering the adit. Sampling and mapping have been done around the 4 located adits and assay results are pending. In relation to work on these claims prospecting of the area should try to locate the actual Laidlaw 2 showing, but this should depend on the results from the sampling of the Blue Chip and be coordinated with this program.

Figure 1: Location map 1:50,000 B.C. topo map
2: 1"=4 mi Geology map 737A (GSC 1944)



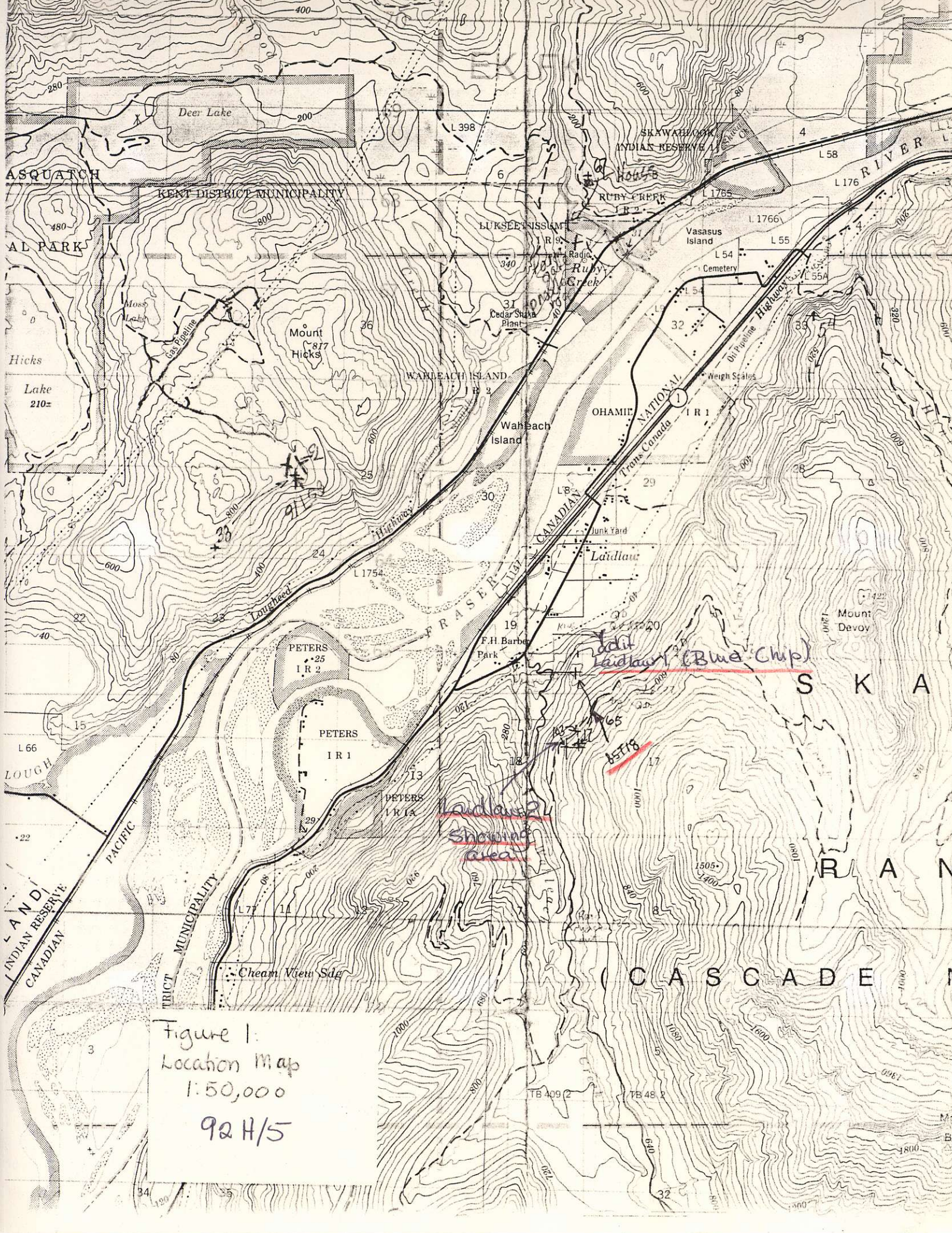


Figure 1.
 Location Map
 1:50,000
 92 H/5

1- HOZAMEEN GROUP: chert, argillite, phyllite, limestone; intercalated volcanic rocks. Probably Carboniferous or Permian
 2- Andesite and rhyolite; tuff; related basic intrusions
 3- Argillite, slate, phyllite, cherty and arenaceous beds, crystalline limestone, conglomerate; intercalated volcanic rocks; micaceous, chloritic, and talcose schists. Comprises CHILLIWACK GROUP (Carboniferous) and younger rocks

INTRUSIVE ROCKS

- JURASSIC (?) AND LATER:**
- 25- Granite, granodiorite, quartz diorite, and diorite (not all of the same age); 25a, Eagle granodiorite (mainly); gneissic granodiorite
 - 26- Quartz diorite, diorite. Post-Lower Cretaceous
 - 27- Felsitic intrusions. Post-Lower Cretaceous
- 23- Chiefly serpentine**
24- Diorite, gabbro, amphibolite, hornblendite, pyroxenite
- JURASSIC 4**
- 20- Custer granite-gneiss: chiefly gneissic granite and granodiorite; 20a, granodiorite, quartz diorite, and diorite
 - 21- Slesse hornblende diorite
 - 22- Vedder greenstone. May be pre-Jurassic.

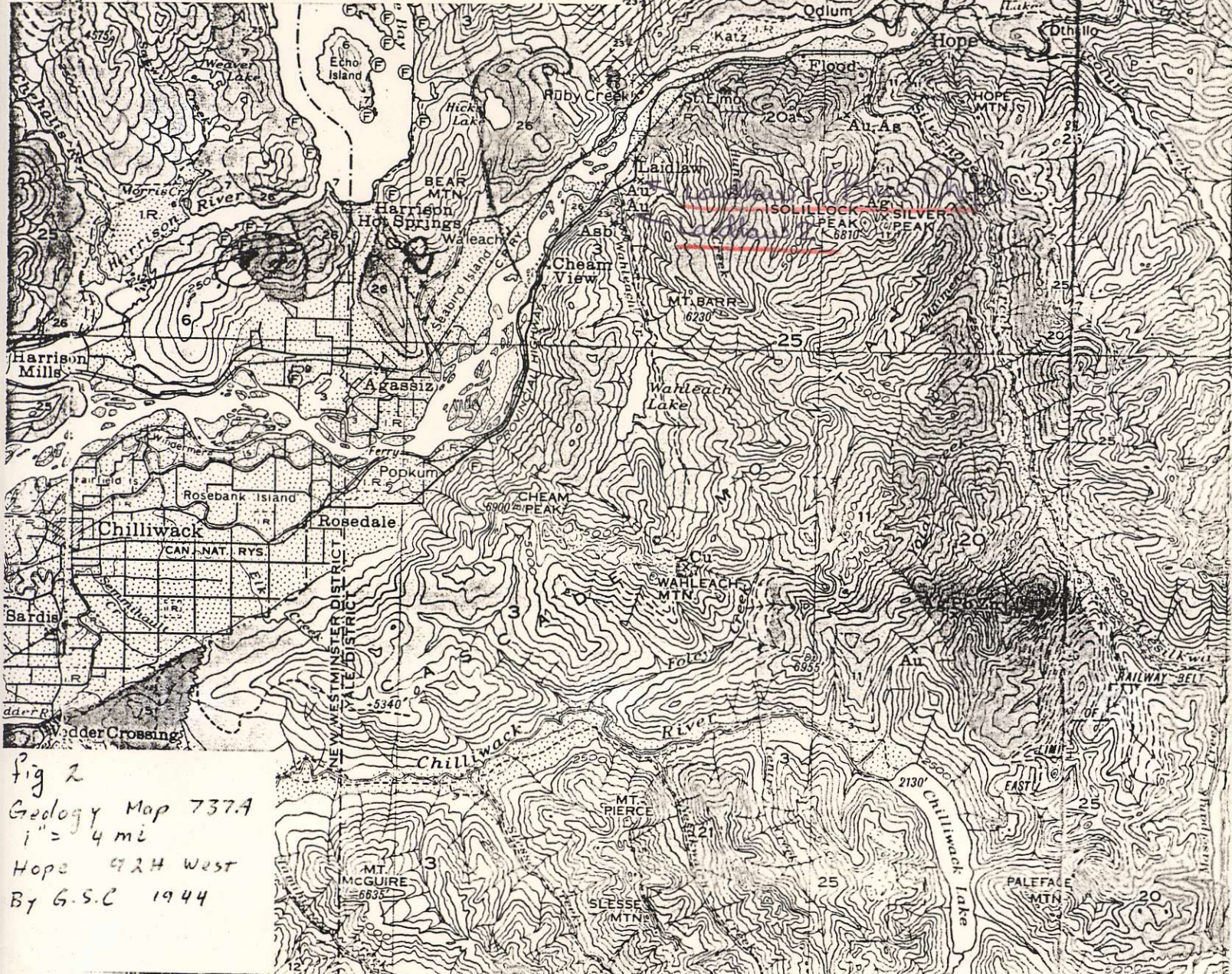


Fig 2
 Geology Map 7374
 1" = 4 mi
 Hope 424 West
 By G.S.C. 1944