

June 19/85

Shadlow Rd Survey to add it

st	dg	dist	offset		rem
			R	L	
turn	008°	76.6			old road N to turn
1→2	066°	11.0	0.0	4.0	
2→3	047°	50.0	.5	2.0	
3→4	029°	19.8	.5	2.3	
4→5	005.5°	45.5	.4	2.5	
5→6	012.5°	50.5	2.6	.5	
6→7	051°	20.4	6.0	0.0	
7→8	090°	34.3	3.7	0.0	
8→9	060°	19.5	0.0	4.9	
9→10	043.5	50.5	0.0	4.9	end of rock pile 15.0 ← 29.4 from #8
10→11	023°	50.5	1.0	2.4	from #9 off Lst 12 into Lst 21
11→12	026°	23.0	0.0	2.4	
12→13	047.5	30.5	2.5	0.0	
	044°	35.3	2.0		

Bluechip
826749
92H/5E

st.	dq	dis	offset r	L	rem
13→14	034°	33.6	0.0	2.1	<
14→15	035°	20.0	1.5	.8	
15→16	053.5°	26.5	2.4	0.0	↓
16→17	055°	39.2	2.4	.3	
17→18	040°	22.7	0.0	2.6	
18→19	071.5	39.0	2.8	2.6	
19→20	110.0	38.5	2.3	0.2	
20→21	100.0	25.8	1.6	1.2	
21→22	75.0	30.2	0.0	2.5	
22→23	96.0	35.3	2.5	0.0	dealing of 18.1

↑

75.6m

from 23

in front of adit

339
edge

11.6m

Adit 64.5m N143E from
station 23

Adit qtz diorite medium
grained with biotite and hbl.
Varying amount of py and/or
pyrrh up to 10%. Up to 40%
mafic. Qtz veins 1-5cm throughout

85T45 64.5m mafic qtz diorite
with pyrrh and qtz vein

85T46 60.0m qtz diorite with

oxides shear zone 1cm and
qtz vein $> .5$ cm ~~is~~ diss coars-
5-6mm pyrph

85T47 1-4cm qtz vein with
coarse pyrph 5mm and pyrph
b-tbs ~~is~~ up to 1cm in qtz
dionite medium grained 50%
mafics at 55.0m

85T48 at 60.0m Medium
grained qtz dionite with
50% mafics in contact with
1cm shear zone ~~is~~ oxides
~~minor~~ 2% diss pyrph

85T49 medium grained qtz
dionite diss 2% pyrph
1cm qtz vein. Sample
across vein 45.0m

85T50 at 40m medium
grained qtz dionite with
5% coarse diss pyrph 6-7mm
limonite/goethite staining on
fractures

85T51 at 35m medium grained
qtz dionite 5% diss pyrph

coarse 8mm. 1 cm Qtz
vein with 5% pyrrh. 5cm
shear zone, oxides

85T52 30m medium grained
Qtz diorite with 5-6% diss
pyrrh. 2cm Qtz vein with
limonite/goethite along contacts
and 4% coarse pyrrh 7mm

85T53 25m medium grained
Qtz diorite 5% diss pyrrh
6cm coarse Qtz vein with 3 by
20cm massive pyrrh lense and
pyrrh blebs up to 1cm

85T54 20m medium grained
Qtz diorite 5% diss pyrrh

85T55 15m 4cm oxidized
shear zone 10-15% diss
pyrrh in medium grained

Qtz diorite 3% pyrrh

85T56 12.5m 30cm

oxidized shear zone with
15% pyrrh and 2-5cm bleached

zones in medium grained
Qtz diorite 40% mafics and
2% diss pyrrh

85T:57 10m 2cm qtz

vein with up to 5mm
pyrrh blebs in medium
grained qtz diorite
with 30% mafics and
5% clss pyrrh

Adit ends at 5m from
st. 23, no sample here

45 mE from central adit

King 5 Feb 5/84

Direct N 1500' 1500' left

King 6 Feb 3/84 #15

Direct. N 1500' 1500' right

E adit 25m from central

chained from to job 47 18.75
at bridge 47 19.45

85T62 Qtz diorite with
15% pyrph diss and in
blebs up to 1.5cm. Medium
grained 20% mafics

85T63 Medium Grained Qtz
diorite 20% mafics 10%
diss pyrph 13.6m

End of tunnel have flat lying
Qtz and Qtz pyrph veins not
sampled, gentle dip to S

85T64 pyrph-Qtz vein
70% pyrph gentle south dip
10.6m

85T65 Qtz diorite, Qtz
vein with sec. muscovite
at 7.6m, tr pyrph

85T66 Qtz diorite medium
grained 20% mafics minor
pyrph diss 1-2% sec. muscovite
associated with lens Qtz
vein

85T67 Qtz diorite medium
grained 20% mafics 10% pyrrh.
diss

85T68 Pyrrh-gtz vein N036E/
22W 60% pyrrh with
gtz blebs

85T69 Qtz diorite medium
grained 20% mafics
10% diss pyrrh

85T70 Qtz diorite medium
grained 20% mafics 10%
diss pyrrh

~~Between central and w Adit
Dist. st-23 & w adit 16.0m~~

85T71 Qtz diorite medium grained
20% mafics, 10% diss pyrrh

85T72 Qtz diorite medium
grained 10% mafics 10% diss
pyrrh

85T73 7 cm gtz vein with
1 cm shear zone with massive
pyrrh lense at lower contact
N119E/10S

85T74 10 cm gtz vein with
irregular pyrrh blebs up to

2 by 5cm

85T75 Qtz diorite medium
grained, 25% mafics hbl
& biotite, 10% drss pyrth.

85T76 10 cm Qtz vein
with minor limonite/goethite
staining N138E/17SW

85T77 Qtz diorite, medium
grained, 25% mafics hbl
- biotite 10-15% pyrth.

85T78 5-10cm shear zone in
Qtz diorite white fine grained
trace of mafics and 4% drss
limonite/goethite N020E/85W

85T79 20 cm Qtz vein with
py (<1%) and traces of pyrth
Upper contact 1cm dark grey
graphitic clay with pyrth lenses
4 x 1 cm loose block not
moved far

85T80 Qtz diorite medium
grained 30% mafics hbl ±
Biotite 10% diss pyrph
Central to E. Adif

85T81 Qtz diorite ^{medium} grained
10% mafics hbl ± biotite
4% muscovite, 5% diss
pyrph. Weathered sample
1.5 cm from surface

85T82 Qtz diorite medium
grained 20% mafic biotite
+ trace hbl. Weathered
surface

85T83 Qtz diorite medium
grained 20% mafics biotite &
hbl. 5% muscovite. Traces
cpy (py²), Pyrrite 7% diss
and in blebs up to 1 cm

June 21/85 E from E. Adif

85T84 Qtz diorite 20% mafics

biotite & hbl, medium grained

5-7% diss pyrrh

85T85 Qtz diorite medium

grained 20% mafics biotite

hbl, 3% diss pyrrh.

85T86 Qtz diorite medium

grained 20% mafics hbl

& biotite 8% diss pyrrh

85T87 Qtz diorite medium

grained 15% mafics 8% diss

pyrrh 5mm pyrrh vein

85T88 Qtz diorite medium

grained 20% mafics hbl

10% diss pyrrh

85T89 Qtz diorite medium

grained 30% mafics hbl 10%

diss pyrrh

85T90 Qtz diorite medium

grained 10% mafics 10% diss

pyrrh, 5cm barren qtz vein in

qtz diorite, muscovite along

weathered fractures along 5cm

contact zone to qtz vein

85T91 Qtz diorite medium
grained 25% mafics hbl +
minor biotite 8% diss
pyrrh

85T92 Qtz diorite medium
grained 30% mafics hbl
& biotite, 10% diss pyrrh. Pyrrh
vein along fracture 2mm

85T93 Qtz diorite, 26m hc
10m lower in gully to creek
than 85T92 fine to medium
grained 30% mafics 10%
diss pyrrh

85T94 10m below 85T93
^{26m}
~~Qtz diorite~~, medium to coarse
grained 55% mafics
coarse hbl and 10% diss
pyrrh. Hbl porphyry dyke

85T95 In creek 37m same
elev. than last. Qtz diorite 40%
mafics hbl, medium grained
10% pyrrh

85T96 creek run N03E flt at
in cr. 44m Qtz diorite

fine to medium grained 40% mafics hbl. 15% ^{pyrrh?} pyrite, 1-2% pyrite. Qtz diorite with qtz vein > 1.5cm with 5-15mm pyrrh ± py blebs, 15% pyrrh 2% py

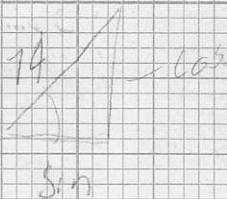
85T97 Diorite, fine grained grey 60-70% mafics 1% diss pyrrh, trace py 50m

85T98 Hornfels aphanitic / fine grained massive conoidal fractures 1% diss py 70m Hornfels ~~has~~ is porphyritic in parts with euhedral hbl phenocrysts 1-3mm. Hornfels intruded by qtz vein and qtz diorite dykes

85T99 Qtz vein 1-5cm with py 5-30% in lenses and blebs up to 1 x 4cm across contact from hornfels - qtz vein - hornfels 75m N019E/30E

85T100 Qtz diorite or qtz dyke vein with 30% diss pyrrh. possible that qtz diorite underlies the hornfels on

this side of the creek :



June 25/85, Blue

W. from st. 23, Central Adit

25.2 m at End O/C W of Western Adit

N200°E 86.6 m to sec. road ^{flag}

N235E 30.0 m from jct to st. 16

Sec. Rd 109° 98.2 m

0 m again 98° 176.4 m broke bread at flag

95° 31.0 m (207.4)

120° 89.0 m (265.4)

137° 108.0 m (284.4)

198° 134.0 m (310.4)

234° 262.0 m (438.4)

199° 293.0 m (469.4)

228° 331.0 m (507.4)

206° 364.0 m (540.4)

172° 393.0 m (569.4)

135° 412.0 m (588.4)

180° 431.0 m (607.4)

228° 450.0 m ^(626.4) end of road

145° 524.0 m ^(700.4) O/C Arg. Alt.

set at 280m

O/C. Fin grained / aphanitic massive black arg. & limonite/goethite on fractures and foliation Qtz stringers up to 1cm with

minor limonite/goethite staining.
 Sec. Road above W Adit
 Qtz diorite medium grained
 35% mafics biotite and
 hbl. 3-5% diss pyrrh.
85T101

W Adit to st. o/c 358

elev. 200m 85T101 at 7m going W

12m 85T102 Qtz diorite
 medium grained 35% mafics
 biotite and hbl 3-5%
 diss pyrrh.

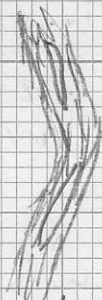
13m Shear zone 20cm with
 g up to 36/40 Qtz diorite
 lenses // strike N0270E
 with W & E dip

E

W

QD

QD



Intense weathered

17m 85T103 Qtz diorite
 medium grained 30% mafics
 biotite and hbl 7-8% diss

pyrrh

22m 85T104 Qtz diorite

medium grained 25%

mafics hbl & biotite 3-5%

pyrrh

27m 85T105 Qtz diorite

medium grained 30% mafics

hbl & biotite 6-7% diss

pyrrh w/ 1.5 cm qtz vein
with 2% ~~diss pyrrh and~~

pyrrh, blebs up to 5mm

32m 40cm shear zone

N028E/90 with clay believed

to be along weathered qtz

vein 30% limonite/goethite

85T106 Weathered qtz

diorite - shear zone with qtz

vein (5?) - qtz diorite 60cm

sampled

85T110 25cm E of shear

zone Qtz diorite medium

grained 25% mafics hbl +

biotite 5% diss pyrrh

85T107 37m Qtz diorite

medium grained 40% mafics

hbl and minor biotite hbl
 up to 1cm in phenocrysts
 < 1% diss. py & pyrth

42m 85T108 Qtz diorite
 medium grained 35% mafics
 hbl and minor biotite
 up to 1cm euhedral hbl
 Pyr diss and in isolated
 blebs up to 1cm 3%

47m 85T109 Qtz diorite
 medium grained 40% mafics
 hbl and biotite, both up
 to 1cm ^{isolated} euhedral crystals
 trace of py + pyrth

Adit 170m

in Harrison 75 (should be
 15)

June 26/85

Cont. on sec. road west from
85T109 at 47m, top at 0m

19.5m 85T111 Qtz diorite
medium grained, 35%

mafics hbl and biotite 2%
diss pyrrh.

28.0m 85T112 Weathered Qtz
diorite, medium grained

40% mafics biotite and hbl
hbl up to 15mm (isolated

crystals 1% diss pyrrh. Fe in
biotite oxides to limonite/
goethite

35m 85T113 Weathered

Qtz diorite medium grained
45% mafics hbl & biotite

isolated euhedral hbl

1cm Fe in biotite oxidized
in parts 2-3% diss pyrrh.

60m 85T114 1 by 2 m Q/c of
Qtz diorite/diorite 66%

mafics hbl and minor biotite
isolated hbl euhedral up

to 15mm Fine to medium grained

3% diss pyrrh.

up from road ^{from} ~~past~~ 85T113
 at 222° toward 85T115
 past 85T114 Elev 170m
 90m 85T115 Qtz diorite

medium grained 40%
 mafics Hbl and biotite

6% pyrrh, diss and
 in blebs up to 8mm

106m 85T116 Weathered
 Qtz diorite medium

grained 35% mafics

biotite and minor Hbl

45% diss pyrrh in
 parts

Branch to sec. road

136 m and elev. 165m

Direct of road $N048^{\circ}E$

167m Bedded Arg. -

arkose/qlz siltc, $N152^{\circ}E/80^{\circ}E$

Beds are 1mm \rightarrow 1cm

Arg, fine grained, black sec. biot.

Arkose, fine grained grey sec mica

~~matrix~~ 1-5 mm Qtz veins
up to 1 cm and lenses up to
5 by 5 cm

168m Contact met. black
arg. fine grained with
sec. mica (biotite) foliation
in arg. as flow banding

190m Arg. fine grained
black massive with
limonite/goethite stained
qtz veins up to 5mm

215m Arg and arkose / quartzite
bedding N160 E / 75 E

Beds 2mm to > 5cm

Left Arg. cliff 277m elev.

165m straight down to
road at St 11 351m
elev. 140m

Chain from Central Adit

elev. 140m at St. 23 ~~120m~~
57m north downhill ^{arg} Qtz

diorite weathered like all
around here exfoliated

Medium grained 40% mafics

hbl and minor biotite:
hbl as euhedral cryst
up to 8mm. 3-5%
diss pyrph. 85T117
140.0m elev. 75 top of
20m cliff of arg
fine grained black

June 27/85

Set Alt at 20m at Laidlaw
Chained from Creek at Rd to
Jones Lake along Rd by power line
Claim line at 249.3m, rd to
right at 309.0m, turn right
at 645.3m. At side (Chalus)
below Adits road turns
uphill N110°E 852.4m
Cr. E of Adits X rd at
939.3m, Creek direct N206°E, turn to
N169°E 972.0m, X road at 998m
road at N261°E

1035m up Cr. Qtz diorite in 15m
cliff Medium grained 45% mafics
hbl and biotite 10% diss pyrph

85T118

1055m Qtz diorite medium
grained 45% mafics hbl and
biotite 5% diss. pyrph 85T120

E side of Cr 10m below 85T100

1075m W side Cr Qtz diorite
fine to medium grained 50%
mafic hbl ± biotite ? 7%
diss pyrph 85T119

1093m in Cr. float sample

85T96

1104m W side creek 85T121

fine to medium grained Qtz
diorite grey 35% mafics
15% diss pyrrh

1115m W side Cr. 4m up Creek Adit

1130m in Cr. 20cm Qtz vein

in Qtz diorite 85T122 Qtz vein

10% pyrrh in blebs up to 1cm Qtz
diorite recryst. tallochem mat. with Qtz
vein 5-10% mafic fine to medium
grained 10% pyrrh in blebs up to 8mm

1142 E side Cr.

85T123 Qtz diorite medium grained

30% biotite and 10% pyrrh in

diss and blebs up to 4mm

85T124 Hbl porphyry euhedral

Hbl up to 3mm fine grained

10% diss pyrrh irregular

distribution minor diss chl

1155m Arg fine grained black

with sec. biotite irregular

distribution of pyrrh diss

contact metamorphic arg E

side of fault

(contact as shear?) shear

found at 1142 m in creek
1157 m in Cr. 85T/25 fine
grained banded irregularly
arkose/wacke greenish grey
and purple with stringers
of pyrrh in greenish grey
part

Turn east at 1166.6 m N061°E
Cr run N020E

1226 m fine grained black
arg with qtz stringers 1-4 mm

|| foliation N072E/90

O/C N214E and turns above

1199 m Elev 175 m O/C

turn around to E. Down
hill at N015E

1268 m Arg. fine grained
black with qtz stringers ||
foliation 1-4 mm N050E/90

1315 m Arg fine grained black
20% sec mica (biotite ± muscovite)

stringers of qtz || foliation .5-1 mm

Walking down at 342 from

1316 m

1334 m Hbl porphyry, 10% euhedral

greenish black Hbl phenocrysts
 3 - 8 mm minor chss chl

3% chss magnetite 85T126

Down at road at 1400m

at bend in road boulders?

Arg. fine grained black
 with irregular qtz stringers

0.5 mm and 20% mica (sec.)

and Arkose/wacke fine
 grained grey silicified

43m to where we

crossed earlier,

along road to adits

End? 60m

75m 85T127 Qtz diorite

medium grained 40% mafics

Hbl & minor biotite 10%

chss pyrph

out on thalweg slope 90m

Adits 123m

June 28/85

Creek Adit

- ② N. side 5m at N239°E opening
from left 7.3m N256°E
7.3m N181°E
to Y 8.8m N157°E
left 4.9m N127°E
right 3.0m N242°E

85T/28 Fine grained grey
equigranular gtzite/hornfels
with 1cm gtz vein. 15%
diss pyrth in gtzite/hornfels
and ^{up to} 20% biotite ~~along~~ along foliation
Shear zone/fault across
adit N025 E/52W

in thick with clay minerals

85T/29 fine grained grey to
greenish grey hornfels 10-15%
pyrth diss and in blebs up
to 8mm. Traces of ^{35%} cpy
Up to 25% biotite and
muscovite

85T/30 Qtz vein 25 cm
N090 E/025 strike and
dip changes but basidly

follows adit, barren with
minor limonite/goethite
staining

85T131 fine grained grey
hornfels 10% pyrrh diss
and 30% muscovite &
biotite

85T132 fine grained grey
equigranular 15% pyrrh diss
10% muscovite intrusive
contact metamorphic
allochemical metamorphism

85T133 Fine to medium
grained light grey
equigranular 3-7% pyrrh
irregular distribution
intrusive allochemical
contact metamorphic
10% muscovite

85T134 Across 45 cm
qtz vein barren qtz
with minor limonite/
goethite staining in
centre increasing
toward contacts
Vein follows adit

85T135 Qtz diorite

fine to medium grained
40% mafics hbl and
biotite 10-15% diss

pyrrh

85T136 Qtz diorite

medium grained 40% mafics
hbl & biotite 10% diss

pyrrh, trace cpy

85T137 Qtz vein, barren

limonite/goethite staining

85T138 Qtz diorite, fine

to medium grain, 45%
mafics hbl & biotite 7-10%

diss pyrrh

85T139 Qtz vein, barren

minor limonite/goethite

staining, across vein

85T140 fine to medium

grained Qtz diorite 45%
mafics hbl + biotite 10-15%

diss pyrrh

85T141 fine to medium

grained Qtz diorite, 40%

mafics hbl + biotite 10%

diss pyrrh

85T142 Qtz diorite
 fine to medium grained
 35% mafics W &
 biotite, 10-15% diss
 pyrrh.

Rd. Survey ^{claim line} uphill

ict → AN	193°E	32.0m	5m wide
A → B	N205°E	67.0m	4.1m ^{rig}
B → C	N228°E	99.0m	3.9m
C → D	N205°E	124.0m	5.0m
D →	N235°E		5.2

down hill

ict → I	N359°E	76.0m	5.0 wide left
I → II	N325°E	90.5	4.4 m
II → III	293°E	107.0	4.5 m
III → IV	264°E	139.0	4.2m / 18.0m
IV → V	240°E	212.0	4.0m
V →	260°E		

June 30/85

W Adit N136°E

Chained in 50.5m about
another 5m water to

deep, sampling in
5m in 85T143 Qtz diorite
medium grained hbl + biotite

30%, 10-15% pyrrh diss and
on fractures sample across
30cm with a 2.5cm Qtz

vein barren with limonite/
goethite staining. Qtz vein

N045E/16N (right)

10m 85T144 Qtz diorite medium
grained 35% mafics hbl + biotite
10-15% diss pyrrh (right)

15m 85T145 Qtz diorite medium
grained 30% mafics hbl +
biotite 10% diss pyrrh (right)

18.5m 25cm shear zone
with Qtz veins up to 3cm

N022E/90° shear zone 85T146
(left) shear with clay

20m 85T147 Qtz diorite
medium grained 30% mafics

Wbl + biotite 2) 5 pyrth diss
and in blebs up to 8mm right
25m 85T148 Qtz diantk

medium grained 25%
mafics wbl, 5-10% diss
pyrth (left)

30m 85T149 Qtz diante
medium grained 35%

mafics wbl + biotite 10%
diss pyrth (right)

35m 85T150 Qtz diante
medium grained 35%

mafics wbl + biotite 5-10%
diss pyrth (left)

40m 85T151 Qtz diante

medium grained 35% mafics
wbl + biotite 5% diss pyrth
(left)

45m 85T152 Qtz diante
medium grained 35%

mafics wbl + biotite 5-
10% diss pyrth (right)

49.2m 85T153 Qtz diante

medium grained 35%
mafics wbl + biotite 5%
diss pyrth (left)

The adit continues for about another 10m, water too deep to continue need more hose to do that, that was not considered necessary.

Qtz diorite in this adit, has generally more biotite than hbl and there is less diss pyrph here than in the central adit. few qtz veins, they seem barren with minor Fe-oxide staining. I haven't seen much of the thin qtz veins found at ABO