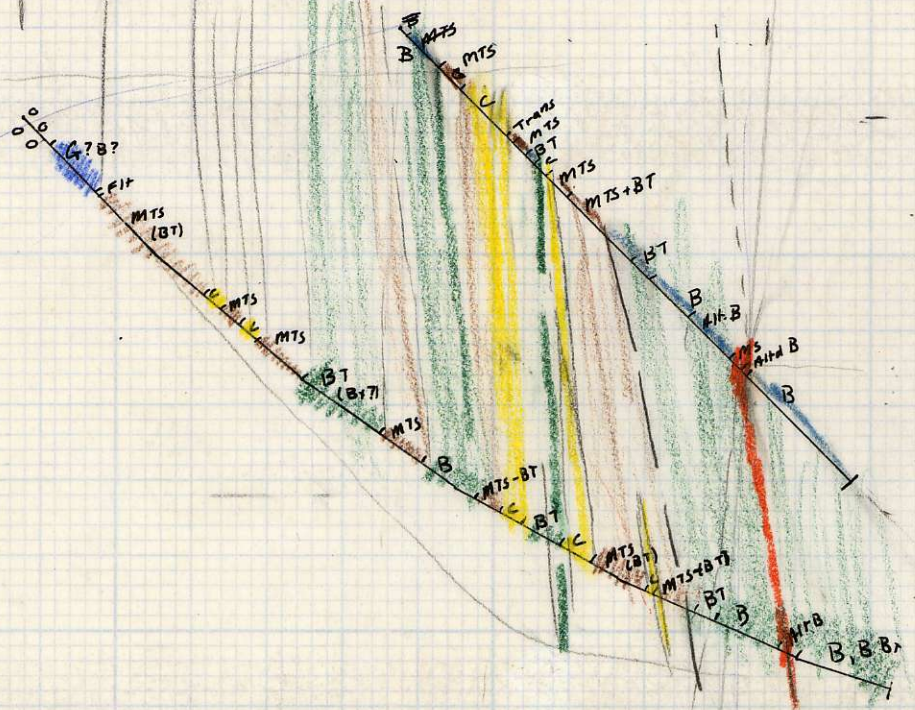


950

North Forks  
092H/12

900

850



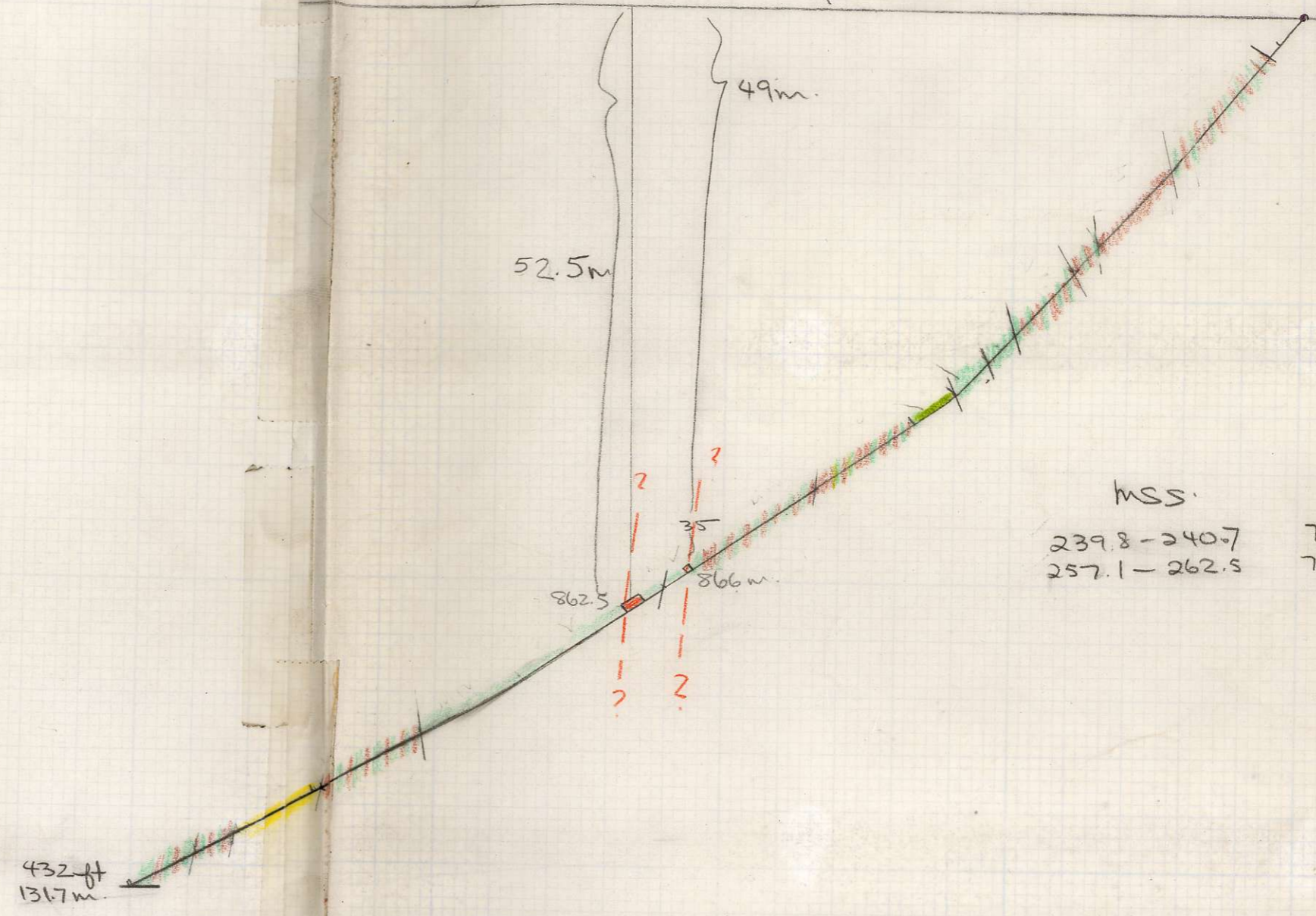
Lookang  
Bea  
NF-1

Nok  
350  
080

826615

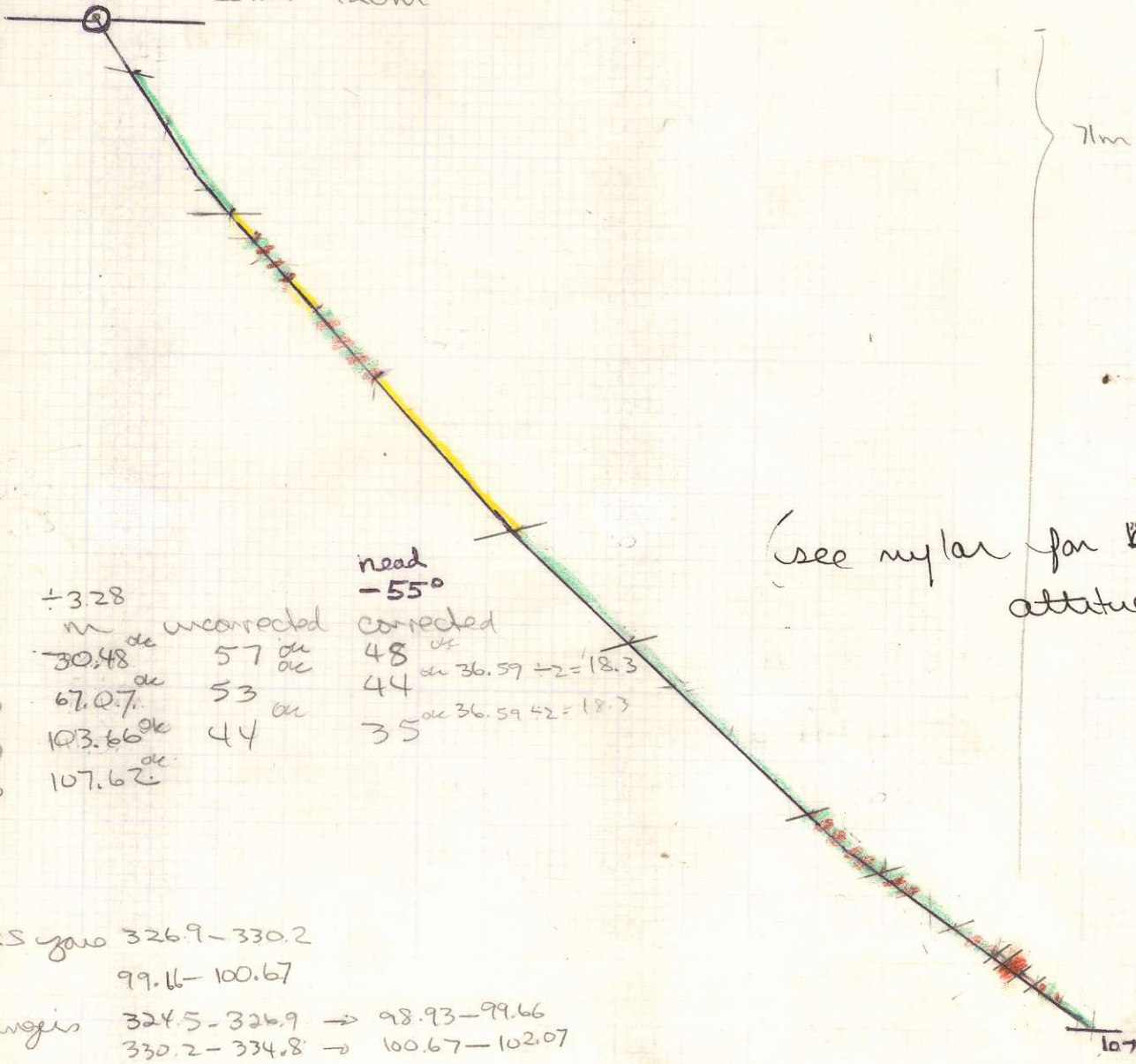
Coords LO+69E  
LO+70S

elevation - 915m  
- 050/260°  
NF. 87.2



MSS.  
239.8 - 240.7      73.11 - 73.38  
257.1 - 262.5      78.38 - 80.03

+ 0+33S      -55°/270°  
 0+81E  
 NF87.1      Collar 920m



(see mylar for bedding attitudes)

| ft  | m      | uncorrected | need -55° corrected |
|-----|--------|-------------|---------------------|
| 100 | 30.48  | 57          | 48                  |
| 220 | 67.07  | 53          | 44                  |
| 340 | 103.66 | 44          | 35                  |
| 353 | 107.62 |             |                     |

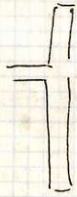
36.59 → 2 = 18.3  
 36.59 → 2 = 18.3

MSS zero 326.9 - 330.2  
 99.6 - 100.67

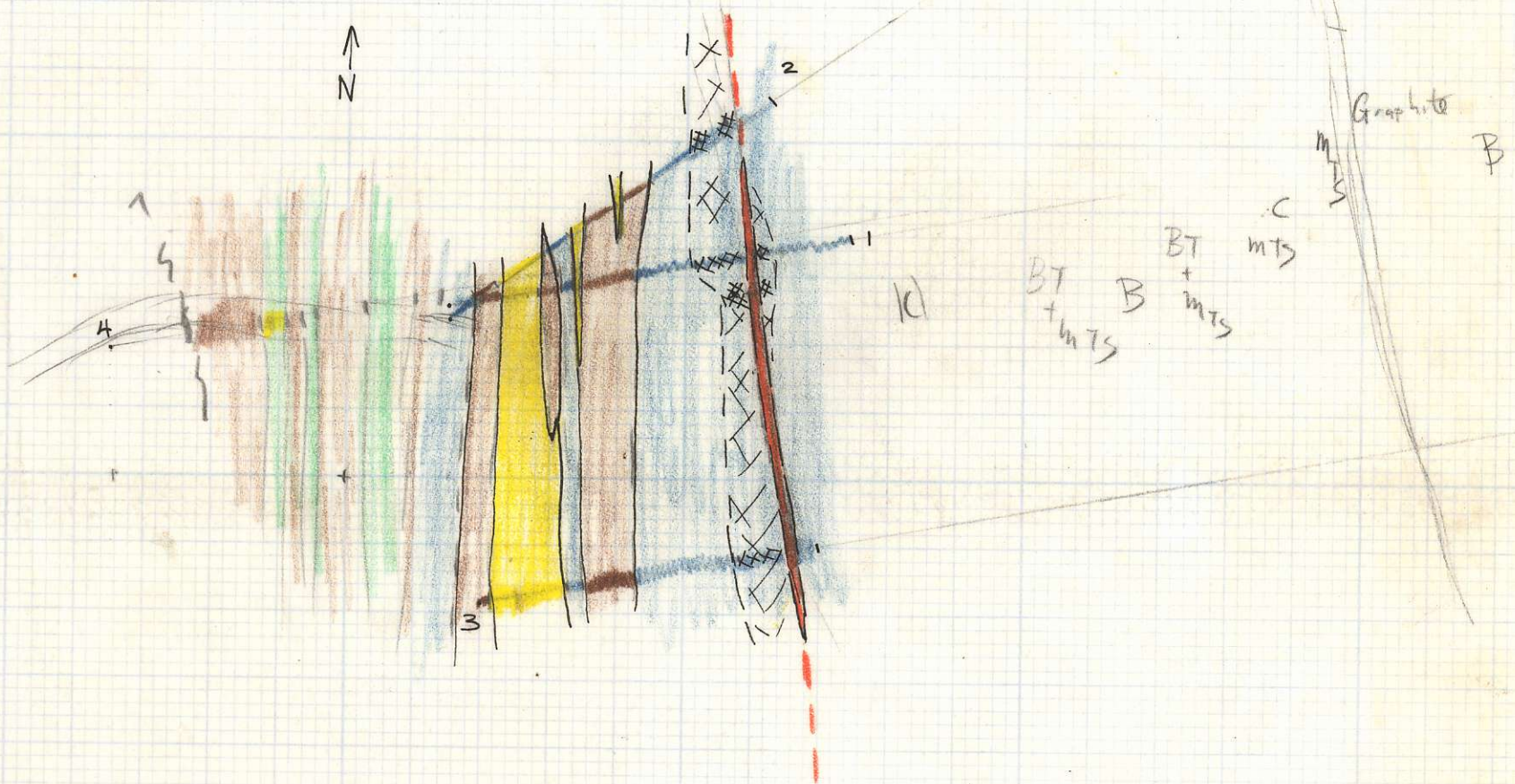
Struogis 324.5 - 326.9 → 98.93 - 99.66  
 330.2 - 334.8 → 100.67 - 102.07

920  
 71  
 849

107.62

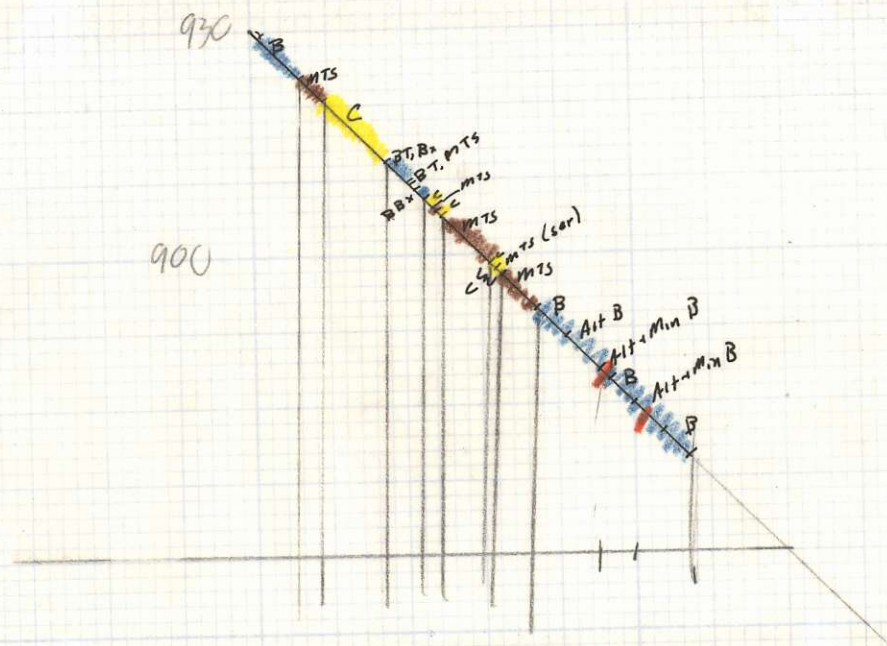


str length 70 m  
 dip " 1400  
 thickness 5  
1.5 MT

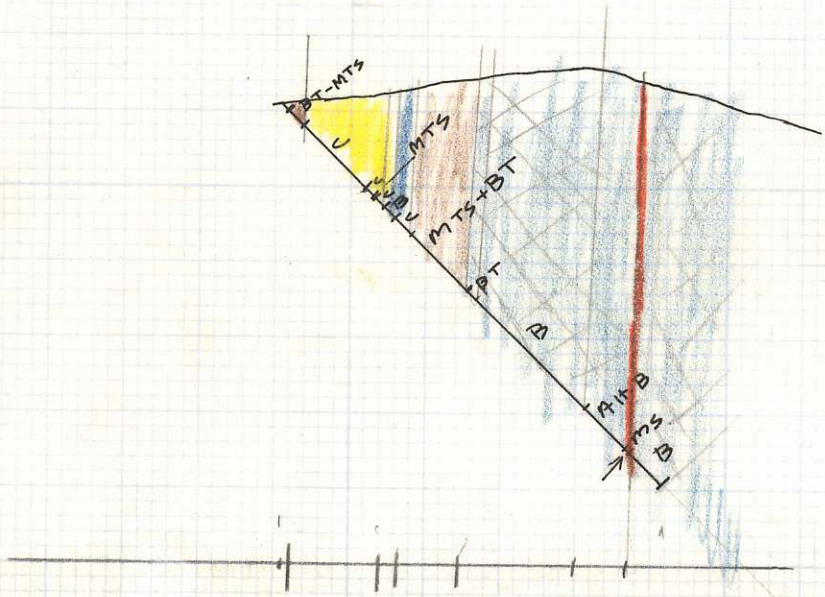


1:1000  
 surf projection of drill hole geology

10m



NF-2 Looking 325



900

850

NF-3  
Looking 350

# TRANSLATION LEGEND

E HARRISON  
N FORKS

B → 1A-1

PB → 1B

BT → 1C

BB<sub>x</sub> → 1D

MTV → 1E

MTS → ~~3A~~ 3A or 3B

bi-Q schist = 3A

phyl or arg = 3B

cgl → 3C

C, WBC → 3D

Ls → 3E

'Intrusive' → 4

Di (or G assoc'd w. Di, QD etc) = 4A

QD, Tonalite = 4B

Granite, Gr, Gd, = 4C

Db or diabase ⇒ 4D

G, Gabbro

meta-G

⇒ 5

UM

perid

px'ite

⇒

6

Crosby 1:30-2:00