

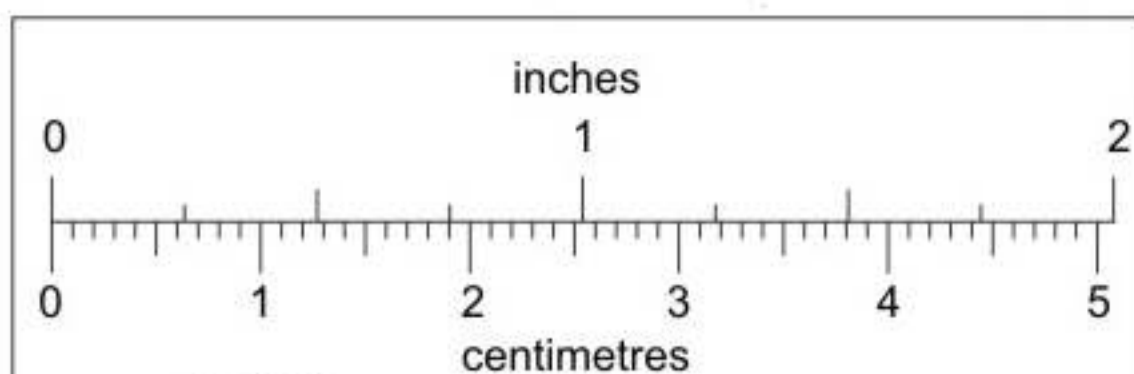
ABOVE CAMP #18
MAIN STREAM

BELOW CAMP #18
STREAM SPLITS
UNDER MORAINES



SOIL SET SAMPLE Nos. 523-627

SAMPLES: Cu, Mo.



This reference scale bar has been added to the original image. It will scale at the same rate as the image, therefore it can be used as a reference for the original size.

WILF CHRISTIAN
CAP CORNWELL

AUG 1968

CAMPS #15-16-17-18-19

GRANITIC INTRUSIVE ROCKS

MAINLY Volcanic +
SEDIMENTARY ROCK

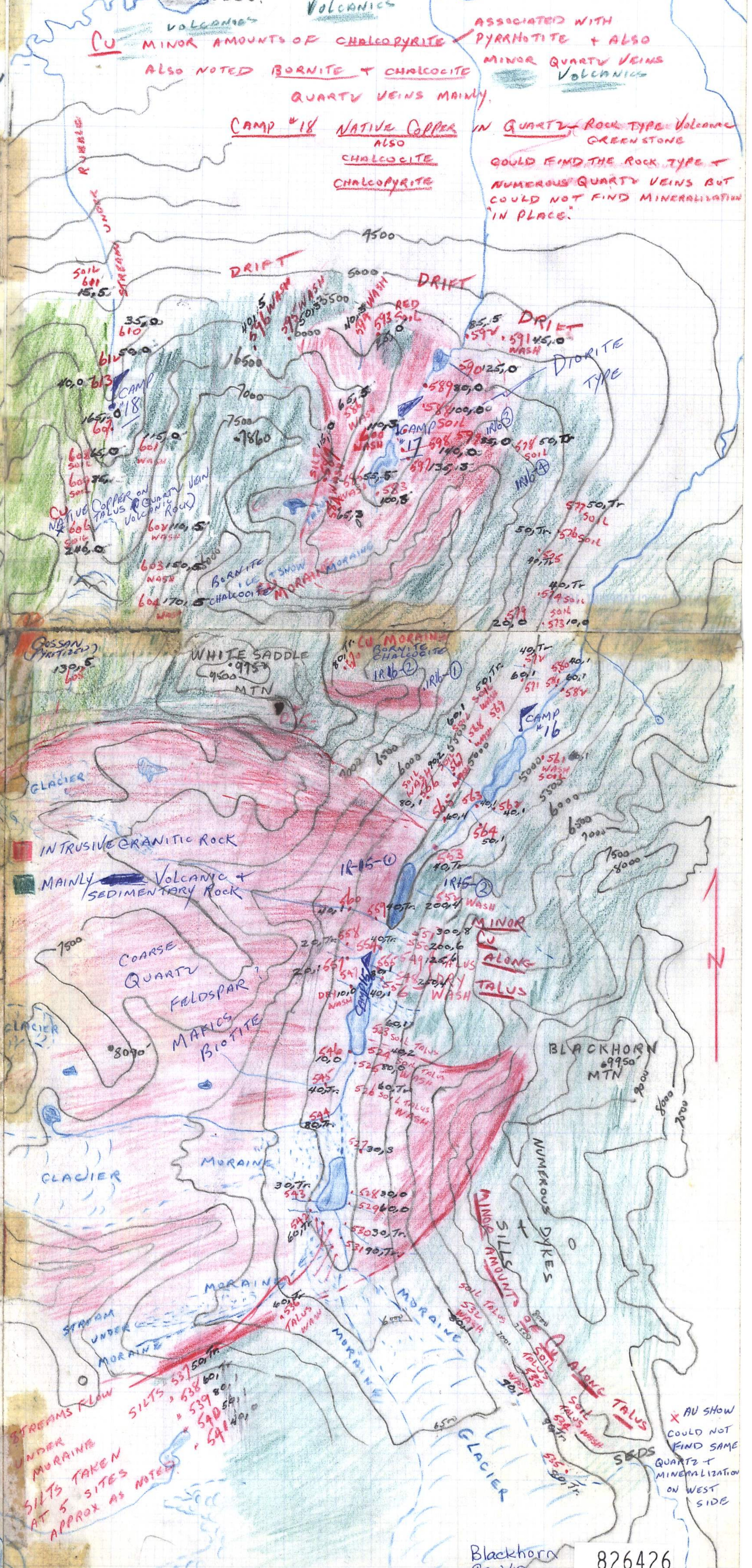
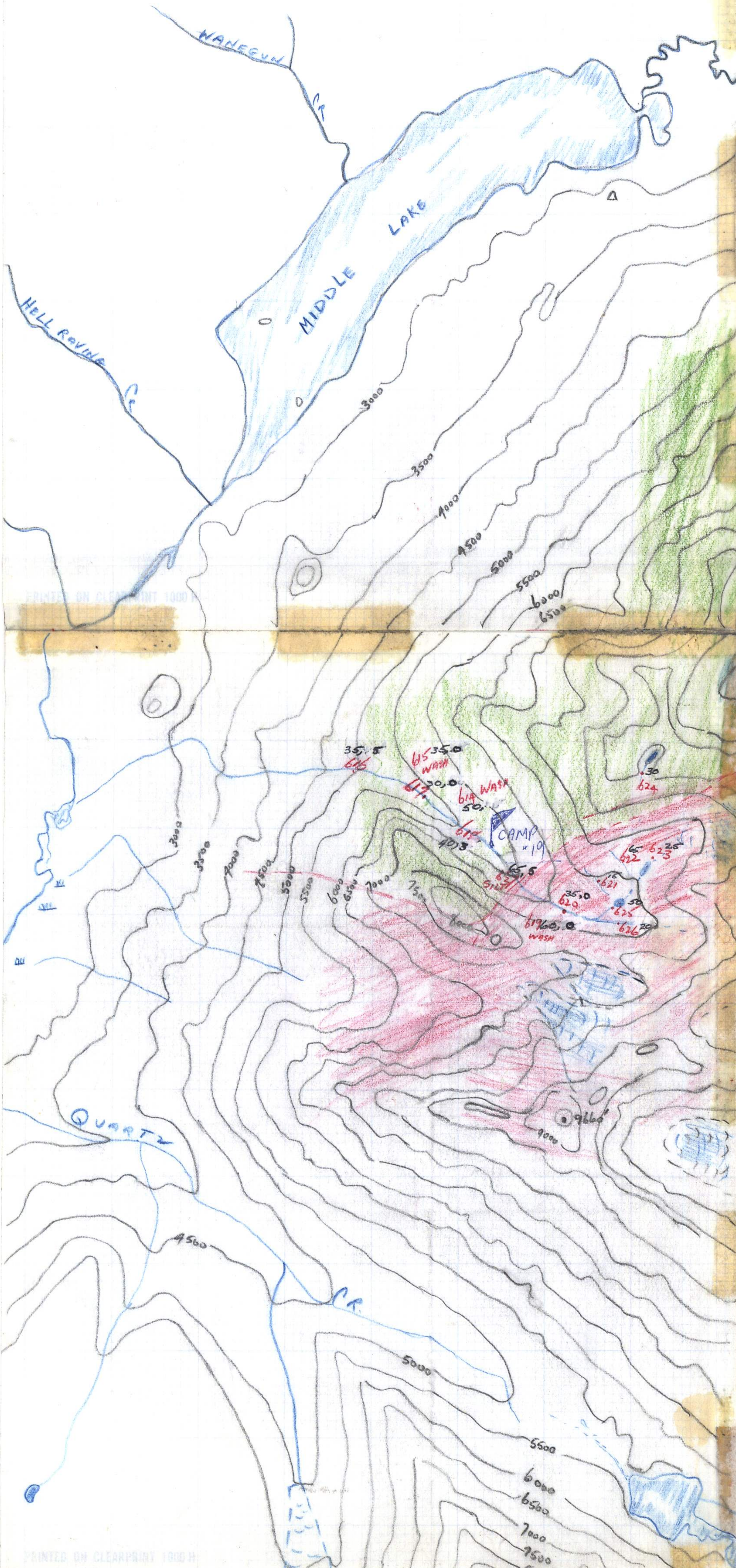
MAINLY Volcanic + RELATED
SEDS.

Volcanics
Volcanics
Cu
MINOR AMOUNTS OF CHALCOPYRITE
ALSO NOTED BORNITE + CHALCOCITE

ASSOCIATED WITH
PYRROPHITE + ALSO
MINOR QUARTZ VEINS
Volcanics

CAMP #18 NATIVE COPPER
ALSO
CHALCOCITE
CHALCOPYRITE

IN QUARTZ ROCK TYPE Volcanic
GREENSTONE
COULD FIND THE ROCK TYPE +
NUMEROUS QUARTZ VEINS BUT
COULD NOT FIND MINERALIZATION
"IN PLACE."



Blackhorn
9/21/10 1983 826426

X AU SHOW
COULD NOT
FIND SAME
QUARTZ +
MINERALIZATION
ON WEST
SIDE