

CORPORATION FALCONBRIDGE COPPER

FILE
MEMORANDUM

DATE: March 20, 1984
TO: D. H. Watkins
COPIES TO: M. J. Knuckey
FROM: A. J. Davidson
SUBJECT: BETTER RESOURCES - MT. WASHINGTON AU PROSPECT

826282

Location and Access

Better Resources' Mt. Washington Au prospect is located at an elevation of 4500 feet on the northwest slopes of Mt. Washington near Courtenay on Vancouver Island. Access is by 4 wheel drive vehicle via logging roads (Figure 1).

Regional Geology

The Mt. Washington area is underlain by Karmutsen basic volcanics and Comox sandstones and conglomerates of Cretaceous age.

Local Geology

No detail maps of the property are available. However, Better Resources have said that the volcanics on the property dip gently west. Gold mineralization is found in arsenopyrite-rich sulphides in breccias. There is a good possibility that the mineralization is stratigraphically controlled.

Mineralization

The gold mineralization on the property is found in two sets of trenches, the Domineer Trench and the Western Trench. Assays from the Domineer Trench gave "an average grade over 90 feet strike length of 0.40 oz/t Au and 6.77 oz/t Ag over a 3.1 ft average thickness". Recent sampling shows similar results. Two holes, 50 feet west of the trench, (83-1 and 83-2), tested the strike extent of the Domineer. Hole 83-1 returned 0.19 oz/t Au and 0.87 oz/t Ag over 10.1 feet and 83-2 returned 0.286 oz/t Au and 3.41 oz/t Ag over 9.0 feet. The mineralized zone apparently dips gently west towards the

Western Trench and Better Resources postulate that the two sets of trenches are on the same horizon (Figure 2).

Channel sampling of the Western Trenches (2000' west of the Domineer returned assays of:

Trench	Depth	oz/t Au	oz/t Ag
T-1	1.0 ft	0.144	1.63
T-2	1.8 ft	0.048	0.26
T-3	2.2 ft	0.33	0.12
T-4	4.0 ft	0.069	0.67
T-5	2.3 ft	0.004	0.06
T-6	6.2 ft	0.208	0.87
T-7	4.6 ft	0.145	0.52

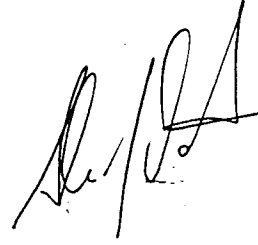
The Western Trenches are also marked by excellent soil geochemical anomalies in gold and arsenic (Figure 3, 4).

Conclusions & Recommendations

Although assays are good and potential exists for significant tonnage the location of the property and the arsenical nature of the gold mineralization pose some real problems. The property is free of snow in July, August and September only, it is adjacent to both Strathcona Park and a major ski facility and is used heavily by hikers and cross country skiers. Drainage from the property is into the Oyster River, a major salmon river, and thence to Oyster Bay a commercial oyster bed. The arsenopyrite virtually insures major environmental problems. Also some confusion and uncertainty exists with regard to the base metal rights (E & N area) on the property.

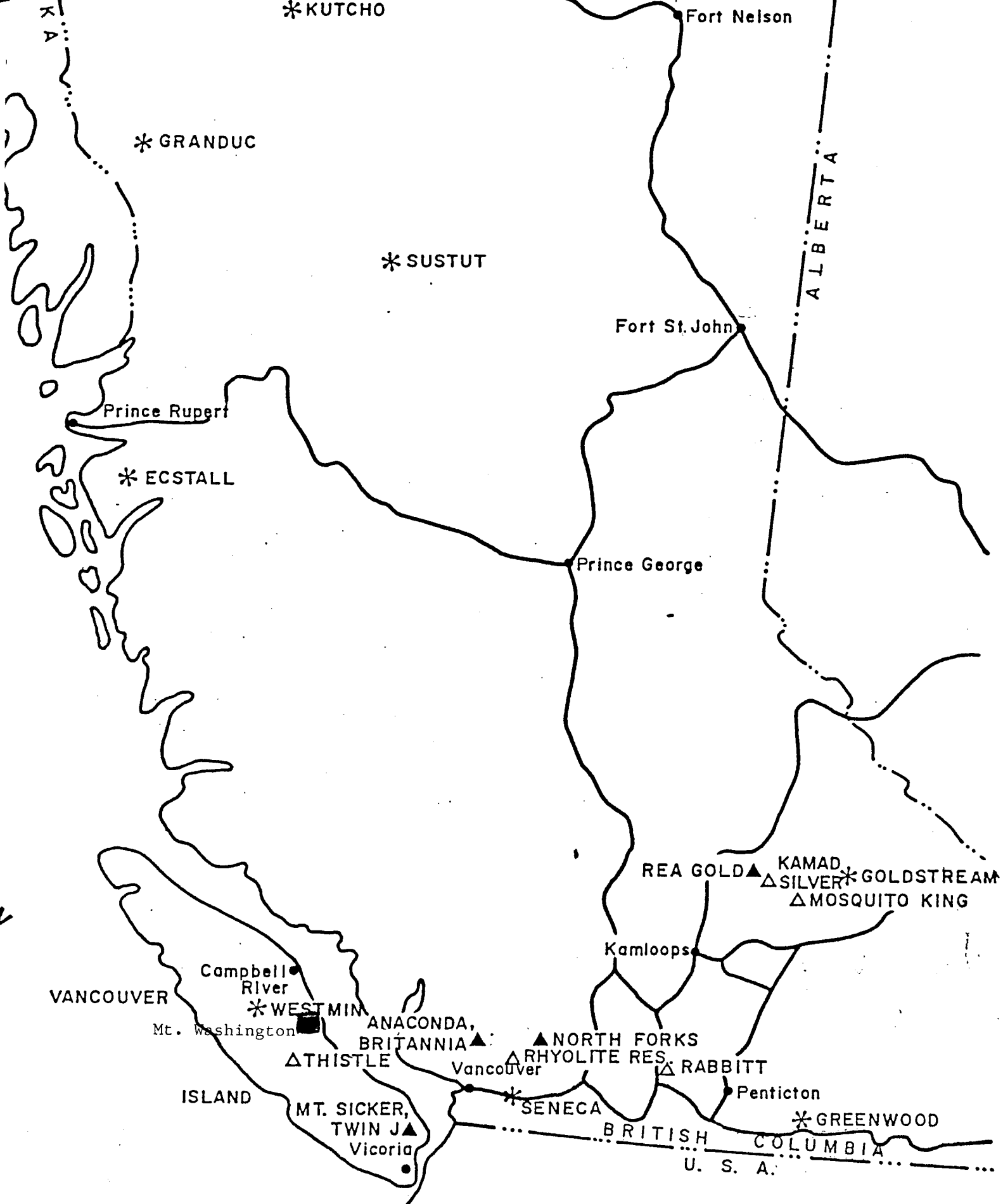
The original concept of getting Austin to finance our participation in a high potential project is excellent and this property satisfies a major requirement for Austin participation namely that early drilling could produce significant gold assays. However due to large environmental problems, the

short work season, and clouded property status via a vis base metal rights, I do not recommend CFC participation at this time.

A handwritten signature in black ink, appearing to read 'A. J. Davidson', written in a cursive style.

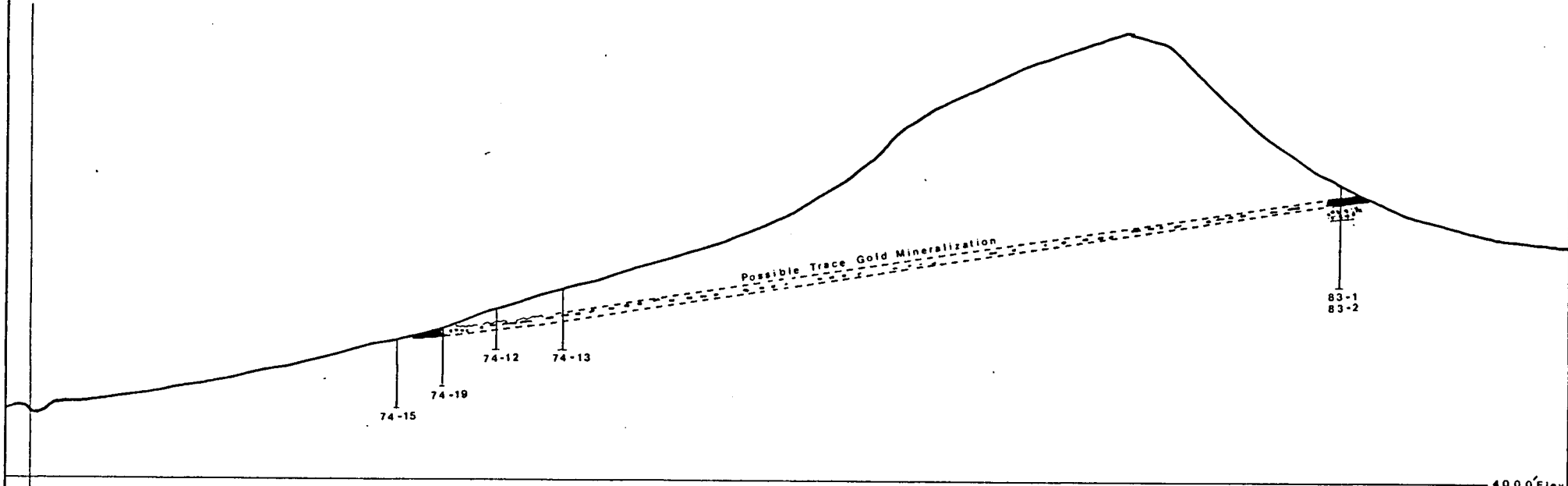
A. J. Davidson

AJD/ik

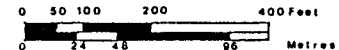


CORPORATION FALCONBRIDGE COPPER

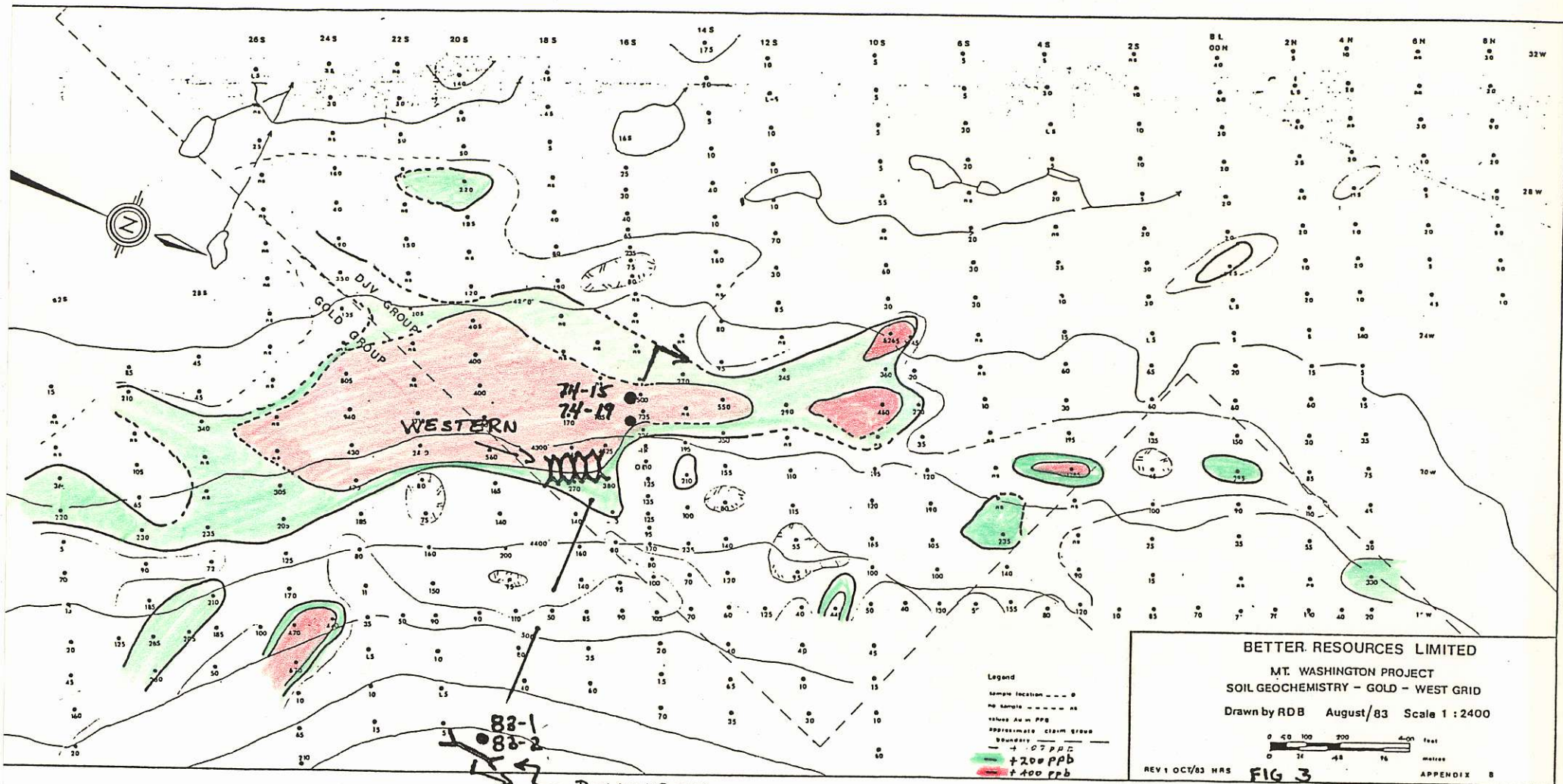
LONGITUDINAL SECTION A-A'
(LOOKING NORTH)

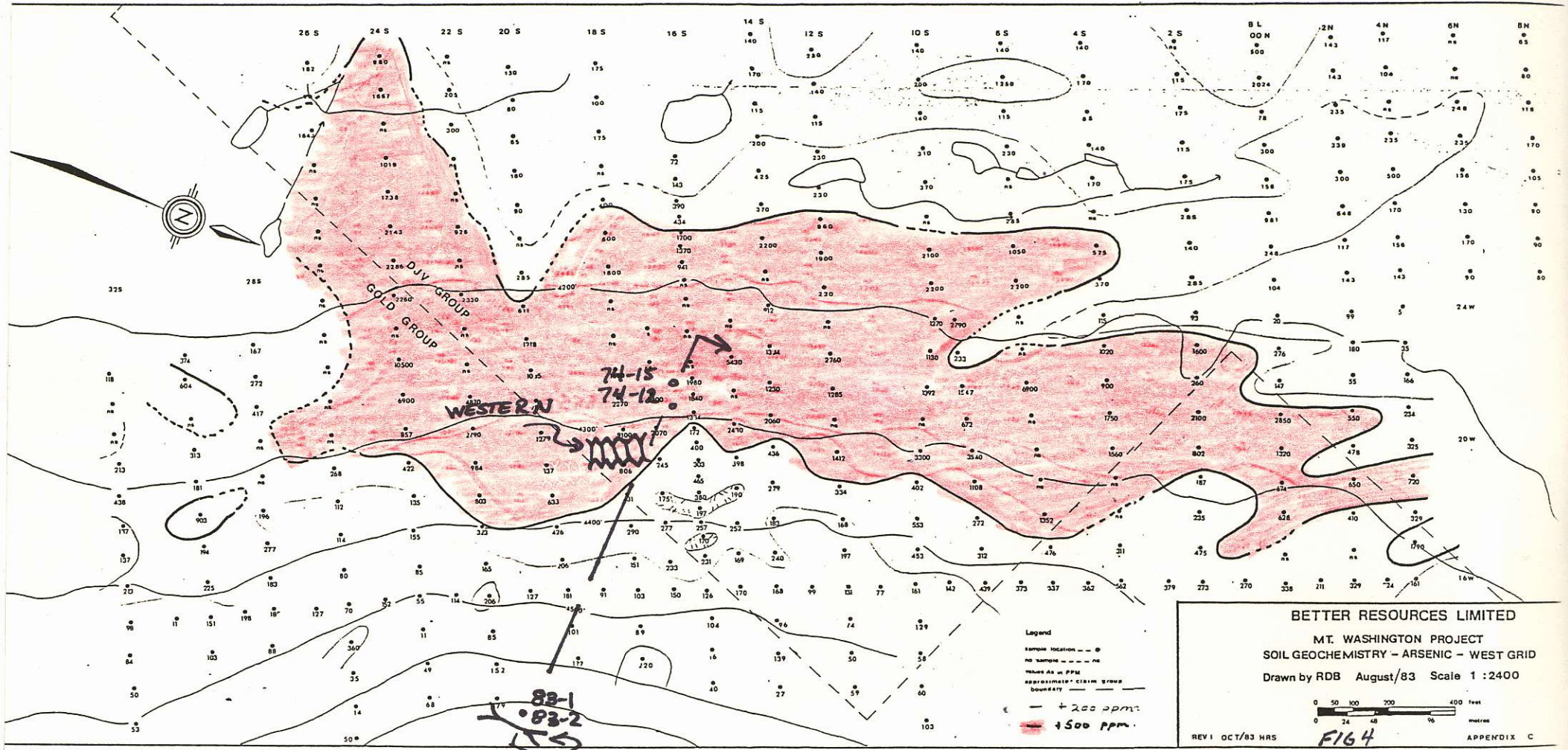


8500E



DRAWN J. F. B.	SCALE 1:2400	BETTER RESOURCES LTD	1983 PROGRAMME
	DATE JAN 1983	MT. WASHINGTON PROJECT	Figure No 2





83-1
 83-2
 DOHINEER