

FERROUX PROPERTY

April 19-30 '89

826256

NCI

No. 46

NEVILLE CROSBY INDUSTRIES

325 W. 6th AVENUE, VANCOUVER, B.C. V5Y 1L1
TELEPHONE (604) 873-4343 OR 1-800-663-6733
FAX (604) 873-8166

MINING & FORESTRY SUPPLIES

INCH

CM

1989 - Minnesota

Apr 3-14

Compilation of field
maps etc in office
~~at~~ 311 Water st.

April 17

drove to Perinton
to meet Graham Evans
& Wayne Hindley

April 18

drove to Midway
to pick up logging road
maps for Ferroux
property

Met Graham Evs
dinner in Kelowna
& found hotel for
Wayne & I for 2 weeks
in Kelowna

April 19

Tour at Ferroux
Property with
Graham & Wayne

also saw

Carmie Mine &
took some samples.

- py, phos, sphal,
Chalco -

April 20

- Wayne & I mapped
out outcroppings along
railroad bed on
south end of property

- rain, rain, rain

- 236 m from
Wilkinson Rd to railway
bed along Ferroux -
wired ck rd. at 336°
using 23° declination

- 136 m at 131° to
first outcrop

FL - Ferroux Property
Lithogeochem

FG - Ferroux Property
Geochem

FL 001 - Fresh gneiss

FL 002 - Fresh Marama
dacite

Joints 034 / 45° E
035 / 60° W
040 / 40° E

FL 003 - Fresh grey to purple
felsic feldspar porphyry
dike (Marama?)

~~035~~ 025 / 55 W

- concentric cooling
fractures

Apr 20

FG 001 - 377 m
black alt. serpentine
w/ feldspar porphyry
on weathered surface
silicified

FG 002 - 377 m
gossan (rusty) from
shear zone

FG 003 - 377 m
silicified breccia

FG 004 - 385 m
Rusty anaachist
(f. gr. greenstone)
w/ 5% dis. pyhotite
(chalco?)

FG 005 - 387 m
weathered loose gossan
loaded w/ pyrite

FG 006 - 425 m
silicified breccia

FG 007 - Muscovite
taken at contact w/ altered
zone

FG 008 - Qtz vein in
weathered G.d.

045/45 E
minor Hercynitic stain
~ 1 m wide

FG 009 - Highly weathered
biotite gd.
@ 648 m

FG 010 - Rusty silicified
(742 m) anachist
1% mylonite

FG 011 - Rusty, crumble altered
(?)
749 m

Apr 20

FG 012 - 889 m
black anarclint w/ 4%
pykrotite

FG 013 - 894 m
gossanous anarclint
w/ 4% pykrotite

FG 014 - sheared gd
weathered
shear @ 040/36' N

E, W claim line @ 1948 m
from Ferroux ck rd.
S 226° from peak
across wilkinson ch.
(on the rail bed)

- N.S. claim line @
85 m w. of Ferroux ck
Rd along rail bed

- Ferroux ck is 592 m w of
Ferroux ck rd on rail bed

Starting FLOO4 | FG0015

April 21 1989

Wayne & Nick
rain all day

Morning

- map in Ferroux ck rd.

Afternoon

- map roadside geology
along Ferroux ck rd.

FL 004 j

FG 015 Morana

Very f. gr. dark green siliceous
Feldspar hornblende diorite
- magnetic but no visible
sulphide

- forms horizontal columns
020/90 - fracture

140/60 S 030 columnar jointing

50/30 W

FG 016 - light green
Peldspar porphyry dacite
(Fresh)
- weakly Magnetic
- from columnar joint
300°/90
0°/30W

Chimney 264° from
road at 40m

FG 017 - Maramba dacite
as above, from valley
west of FG 016
190/22° @ 350° - columns

- large outcropping
in valley
- beautiful cross section
of columns

FG 018

reasonably fresh granodiorite
w/ epidote altered vein
3cm width 125/60N
- most of outcrop is
weathered fissile g.d.

FG 019. weathered

Granodiorite w/ 5cm
shear at 334/25E
- shear shows epidote
alteration
- g.d. fissility at 20/80W
- g.d. fractures @ 80/40.
170/50

FL 005 - Granodiorite
silicified (?)

FL 006 - Qtz Monz
1/2 to 1 cm Qtz porph's
~ 90% mylonite

FG020 - blocky G.d.
along ^{North} side of Fault

Fault @ 284

FG021 - Silicified quartz
Verged Fault material
brecciated

FG022 - Fault breccia

FG023 - Rusty clay altered
G.d. on
South side of
fault.

FG024 - Green chlorite
altered G.d.?
From fault 20 m

11 & N of FG021 fault

FG025

FL 007

April 22 / 89

Wayne, Mick

Cloudy, no rain

- continue mapping road & outcrop
- start on west side of Ferroux cr.

ID in Post. 277 m ^{from} _{On}

Tag 12325

WT 4

June 15 '88

West
side

60612

WT

May 25 / 88

North
side

15

123253

WT4

June 16/88

15

FL007 - Heavily clay
altered Morena
Dacite, chlorite green
1117 m up road from S.
end of map.

FG025 - as above w rust
stain
- same location

Claim Post LCP

~~60612~~

clam Pos 4 LCP

↑ (1250m up road
from S. end
of map.)

Tag # 123251

WT 3

WT 4

B. Deacon

123252

123253

223757

WT 2

Bill Deakin

Minnova

Bill Deakin

223757

June 14

223757

Minnova

June 15

Minnova

305183

N3W2

303183

June 15/88

June 14/88

June 16/88

June 15/88

S4W3

N3E4

N3W2

60612

WT

Rob Patrick

FMC 223042

Minnova WMC

FMC 305183

May 25/88

May 26/88

S5E4

FL 009 - Qtz Monz (?)

- siliceous, R. gr grey
5% py; 1% chalc
middle sample

FL 008

FL 008 - Noram dacite (?)

green feldspar porphyry
southern sample

FL 010 - Rusty blocky altered
(?) Cossan

FL 008-010 from 1551 m north
of S end of map sheet
on road

FG 026 - Noram dacite

FG 027 tuff (?)

feldspar porphyry
green w/ f. green grey
fragments can't ↑

Matrix supported grey
to black fragments up to
3 cm across, 5% vesicular

FL011 black very fine gr.
Quartzite, Qtz Monz
2% sulphide, pyrrhotite

FG028 - Qtz monz.

FG029 - Qtz monz
v. fine gr. like Qtzite
3% sulphide
From possible fault.

FG030 - Brecciated Qtz
vein w/ feldspar alt.
@ $\sim 40/40^\circ$
15 cm wide
in Qtz Monz.

April 23/89

- check direction of claim line at East end of Railbed = E, W

Wayne, Mich

mostly sunny, cool

- run line at 232° from intersection of railbed & E, W claim line to Wilkerson Rd.
= 318 m

- 350 m along Wilk Rd \swarrow to 152 W ID post (WT6) of S. East West claim line of WT6
- 40 m uphill from Rd

- Sampled Pit @ 1.13 km
west on Wilt Rd from
232° Intersection w/
Wilt Rd. (sampled E to W)

FG 012 - F. gr. light
green crystalline
anarchist? w/ 10%
(pyroclastic) sulphide disseminated

FG 031 - v. fine gr. bright
green siliceous
altered anarchist?

FG 032 F. grained dark green
to black, dtz filled
anarchist?
- From west hole

FG 033 - dtz vein w/
biotite Megacrysts
from w/pit.

Apr 23

FL 013 - dark green
f. gr. anarhist
w/ 10% sulphides
(no pyrha) Arseno, py, minor chalc
- from East hole

FG 034 - atz vein
027/34w
white atz
6 cm wide

FG 035 - f. gr. dark green
anarhist
2% sulphide, disseminated
60 m @ 25° from
Road in front of pit.
From Trench

FG 036 From Trench
136 m 732° from
FG 035
Highly siliceous
f. gr. grey (3)
3% sulphide.

FG 037 - From Trench
228°, 17m from

FG 036

Brown clay altered
shear material
with sulphides
Ascend?

FG 038 - From Trench

10m 65° from

FG 037

F. Or grey to black
anorthite? in shear
zone

- similar to sulphide
laden F-013

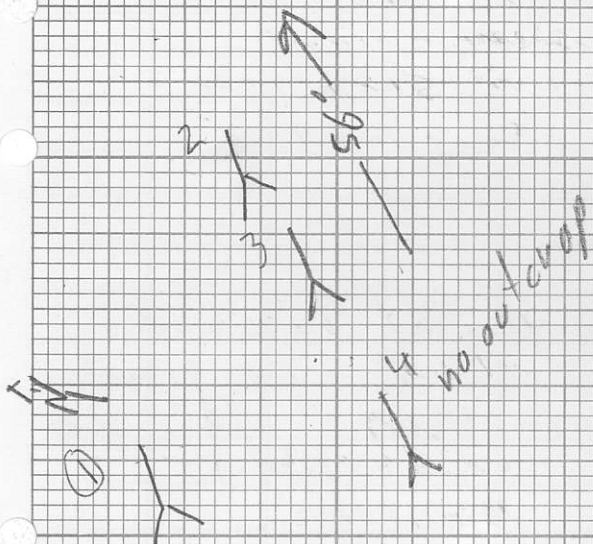
FG 039 From entrance

to FG 038 trench

massive Qtz in contact

with FG 038 rock.

April 23



Post
Corner # 123250

North
side

WT 5

3 South

Well Doatm

FMC 223757

For MINNIVA

305183

June 14/88

Legal

Corner Post # 123587

WT 6

G. Fano

299850

South
side

MINNIVA

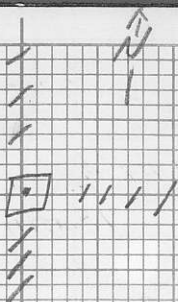
305183

start July 27/88

finish July 28/88

1 south 6 east

April 23



post is 300 m West
of intersection of
claim line (W75 & W76)
& W1K Rd.

This intersection
is 1.32 km along
Road from 263°
Intersection.

ID post is 115 m
above Ruib bed.

→ L is 200 m from
Féroux CK road towards

FC 040 - Qtz vein
in Gd, Rusty, Fractured
2310°/90°
15cm wide

FC 041
- Map Road Heading
west at 2 km
along Fennell Cr
road.

FC 041 fresh diorite
w/ 2% sulphide
blocky
850m up road.

194/50w Md

210/70 SF Gd

320/70 NE Gd

April 23

It's hailing like
a son of a bitch
 $\frac{1}{2}$ cm hail balls

FG 042 - Mavona dacite
very fresh, blocky
flow banding
@ 220/90°

FG 043 - M.d.
dirty grey
feldspar porphyry
2150 m up road
lying below basalts.

(turned out to be
no basalts)

A

April 24 / 89

Wayne, Nick

Partly Cloudy

Drop off taxes
& ship samples

FG 001 - FG 043

FL 001 - 013

to Vancouver.

- Measure distance
from 232° L Road
intersection to
Fenouex ch Rd.

= 1625 m

From WT6 & W5

Claim Line & with Rd

= 225 m

to Fenouex ch Rd.

- Claim line @ 220 m
on Walk Rd W. of
Ferroux ck Rd
turn off. (N-S)

- 220 m ^{west of Ferro ck rd on} Walk Rd
is granodiorite

Fractures @

020/75 E

310/45 S

- 345 m on W/1K Rd
from Ferroux ck Rd.
massive dacite

Flow banding @

315/90°

light pinkish brown

feldspar porphyry

FG 044 - Md from above

Apr, 24/89

350 m - Col Fresh
FG 045 - Gd Breccia

FG 045 - Gd Breccia

@ 353 m

weathered unidentifiable
clasts. up to 1 cm
w/ feldspar phenocrysts
included.

- Breccia extends to
360 m

- 12 m N. from Rd @
360 point is

Md. fractured @

@ 85°/90, feldspar
crystals are subparallel
in this (85°) direction
ie direction of flow.

- splits & 1 cm wide
laminae

FG 046 - Md from above

→ goes to 420

FG 047 - Gd

from intersection
of Raibed & Ferroux ch.
Rusty Gd.

FG 048 - Gd

036/90 frac.

FG 049 - Fresh Gd

frac. 306/60 v (stucco)
220/90

- ~~est~~ LCP 722 m up
Ferroux ch.

from Raibed.

123250 WT-5

W. Peak m

223757

Minova -

305183

June 14, June 17

356E

line runs

East

&

South

Apr 24 '89

FG 050 Gd Fresh
796 m up Ferrux ckr.

FG 051 Gd
biotite rich
1147 m up Ferr ckr.

FG 052 Hemitite stained

FG 053 Gd Breccia "??"
qtz filled?

FL 014 - fresher - as
above

nd (?) Gd Breccia (?)

→ 1245 m up Ferrux ckr.

- 1600 m from claim line
(E-W) to railbed along
Ferrux ckr nd.

April 25 / 89

Wayne - Nick

FI014 FG 053 from ~~April 24~~

- call Graham in the morning & send expense account in via EMS Priority post
- Map West side around creek with many anomalous Heavies.

FG 054 - Flow banded Md, banding seems somewhat contrasted

FL 015 - Fresh Qtz Mnz
From S. side of
anomalous ch.

f. gr. crystalline
dark dark green

FL 016 weathered rock,
altered Qtz Mnz
from N. side of
anomalous ch.

FG 055 ~~is~~ Qtz flooded
altered Qtz Mnz
from ~~the~~ S. side
of anomalous creek
5m downstream
of FL 015.

- ch @ 290°

FG 056 - weathered
Hemite stained
flow banded (contorted)
Md - Feldspars
weathered out.
300m up road from
FG 054

- Traverse up
anomalous ck

FG 057 - 479 m

Tan fgr. ~ 20%
matrics altered w/ vugs
lined w/ Qtz crystals

Fracture @ 120/30° N

FL 017 - 479 m

light gray 20% mafic
(hbl) Md? Qtz Mnz?

- both samples right
at ck.

FG 058 -

Tan w/ 30% clasts

is ~~the~~ ~~matrix~~

supp heavily clay alt.

fault gouge

Corner Post

~~12~~ 123251

WT3

B Pearson

14/06/88

west

East

side

Corner Post

123252

WT2

B Pearson

14/06/88

East

~~West~~

side

↑

line



line

line

FG 059 Md

FG 060 - Qtz Monz
(Fues)

fin. crystalline
light green 5-10% phlo
minor chalc

from same pit Graham
sampled.

FG 061 - dtz Monz

from shear zone
in above pit.

- The rock is fractured
@ ~~270~~ 270 / 35° S
in ~ 4 cm plates

APRIL 26 / 89

Wayne & Nick
partly cloudy

- Going to map the
North East portion
of Fenoua Property

FG 002 Rusty altered
Frag. weathered Md.
lying 1/2 m above ~~at~~ shear

FG 003 - Feldspar Porph
(high density feldspar
w/ high % mafics)
highly fractured &
weathered Md.
Rusty.

FG 064

brecciated dtz
within shear

@ ~ 320/30° E

FG 065 alt. gossanous

② Gd, Md?

- from shear

FG 066 - Md

Feldspar porph.

dtz eye, 5% biotite
phenocrs

FG 067 - lithified
fault gouge & clasts

fault 15cm wide

@ 050/50 SE

lower half of zone is

unlithified brown gouge

- looks exactly like FG 058

Apr 26

can't
- from w. side of large
(40m long, 10m high)
outcrop

FG 068 - light blueish
grey Md w/
f. gr. feldspar & mafic
crystals
Taken along fault zone
@ 020°/85° NW

FLO18 - Fresh Md as
described in FG 068

FG 069 - dark grey Md
surface is rusty, some
feldspar weathered out
from largest fault zone
3m wide
@ 030°/80° W
on NE side of outcrop

get crop fractured
Joints @ 090/60s.
@ 100/30N

fault @ 180°/80'W

FG 070 - Md Fresh

very light grey
subparallel alignment
of mafics vertically
- fractured 030/70W
frac. ~ 5cm plates

IO Post

#123252 W T 2

June 13/88

4E 2N

on N-S line

20m N. of Rd.

Right on claim

line on map.

Apr 26

FG071 - Md Fresh

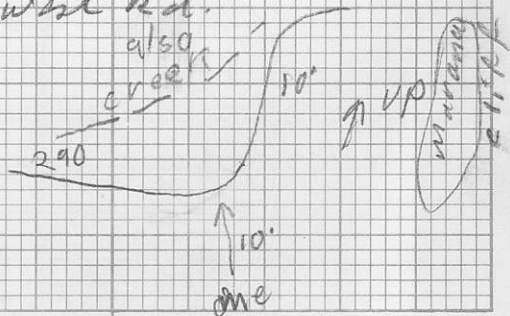
FG072 - Md Fresh

FL019 - f. gr. crystalline
mica schist. Gd
Rusty, weathered

FG073 - Gd. schistose
- weathered

FG074 - at Top (weak)
Md, dark bluish grey
Feldspars only apparent
on weathered surface.

318° from switchback
on west rd.



April 27/89

Waguel & Vint

- warm, partly cloudy
- mapping west side of W76.

FG 075 - Ad

@ 020/90

float shows fb but its not visible in outcrop.

FG 076 Md @ creek

very f. gr. tan Qtz eye w/
fine gr. feldspar. porph's

FG 077 Pegmatite, med.
gr. Qtz & K feldspar

FG 078 - G d

April 27/89

Wagner & Vint

- warm, partly cloudy
- mapping west side of W 76

FG 075 - Ad

@ 020/90

float shows fb but its not visible in outcrop.

FG 076 Md @ creek

very f. gr. tan Qtz eye w/
fine gr. feldspar. porph's

FG 077 Pegmatite, med.
gr. Qtz & K feldspar

FG 078 - G d

contact of Gd & Rd

@ ~360/45°

FL020 - chlorite alt.
Md

Frac. @ 360/90
90/90

FG079 - Pegmatite

coarse gr Qtz

K Feldspar + biotite

FG080 - Md like @ 010/90°

weathered out Kfeldspar

very light grey, very fine

FG081 - Qtz vein

milky white

@ 300 m along

with ch Frac

claim line & ch intersection

FG 082 - float?

very hard Qtz
Qtz Monz?
Magnetic but no
visible inclusions.

FL 021 - ~~are~~ Md? Cd?

Rusty mica seeds
green crystalline
- from across Rd
Anom pit on with Rd.

FG 083 - very fine gr

Qtz Monz?
5-10% pyroxenite
Auscen?

As an some pit as FL 021

April 28

Office Day

Talked to Graham
in Vancouver about
property.

- completed drafting
maps.
- plotted geological
boundaries.

April 29

- clear skies & warm
wayne & I.
- checking out areas
that are ? on
map.
- 7⁵⁺ traverse up
road on East
side of Eastern
creek - on S end
of property
- all granite
only 2 outcrops

- F6084 - Gd
weathered
' fractured
250 m from top
of road.

- No outcrop in clearcut
just west of
Ferrous ch. & south
of crossing.

- Map road west
of Ferrous ch &
south of crossing.

FL022 - Md? Gd?

Qty & matrix
phenols in
dark brown
f. crs. - matrix
- magnetic but no visible
sulphides.

025/90°
315/80° N

FG 085 G-d

Fossilifer @ 030/50° E
Slightly magnetic

FG 086 unknown possible

FG 087 fault gouge,

FL 023 fine gr. brown
matrix with mafic
phenos, all containing
brecciated aty veinlets
& Qtz filled vugs.

(not Flagged because
its on the Irving claim)
nd.

FL 024 From N end

of outcrop of
last 3 samples.

Possibly G-d. due
to amount of
Kty & biotite

also some areas show
a lot of K-feldspar.

14d

April 30/89
Wayne & Nick
Clear & warm

~~①~~
- climb to plateau
basalts ~~in~~
on west side @
ferrous ch crossing.
start @ 1100 m = 3630'
bottom of formation
@ 1200 m = 3960'
m. from rd. = 250 m
@ ~ 30° slope.

FG098 (3)
brown matrix mafic
to felsic phenocrysts
raggy w/ quartz & calcite

FL 023 - ?

See sample
matrix + ~~feldspar~~ phenos
Looks like g.d.? on IVY claims.
Md

- Traverse Top of
Little Nipple

- 020/80W

FL 026 - Md Flaggy

~ 3-10cm

elongated // alignment
of feldspar

at 040/90

// to fracture.

→ also

FG-089 - QM

beds of pyrite on
weathered surface
sulfides?

fresh w/ rusty surfaces
on rd @ NW end of property.

- look at trench above
rail bed @ 910 m
along rail bed (west)
+ 78 m N

- FG 090 - Frapp
South Trench
Trench is 3 m N
~~cut~~ into hillside

Sample is fr. gv.

Q by many ^{fr. brown}

5-10% sulfide

Arseno, py, pyrrho

FG-089 - QM

beds of pyrite on
weathered surface
sulfides?

fresh w/ rusty surfaces
on rd @ NW end of property

- look at trench above
rail bed @ 910 m
along rail bed (west)
+ 78 m N

- FG 090 - Frapp
South Trench
Trench is 3 m N
~~at~~ into hillside

Sample is fr. gr.

Q by many ^{fr. brown}

5-10% sulfide

Arseno, py, pyrrho

Road above rickbed
is 180 m N of
rickbed