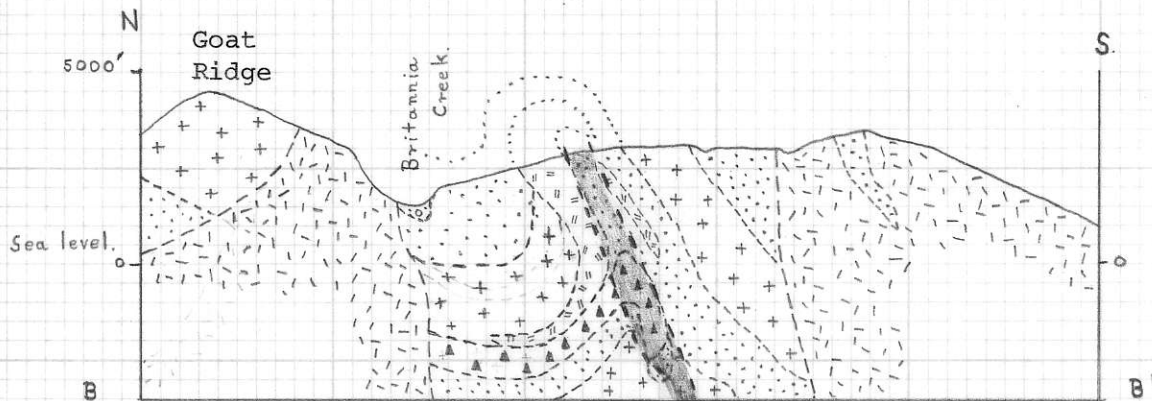
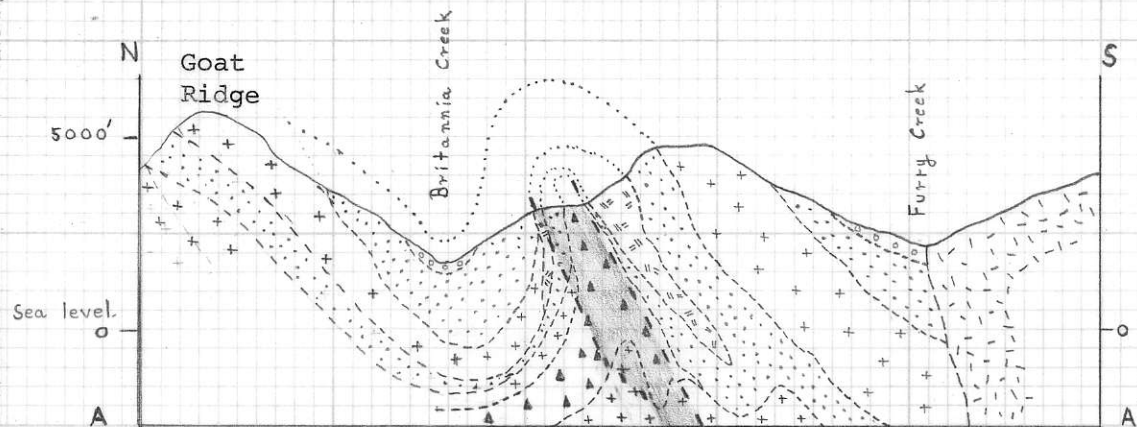


ANACONDA BRITANNIA MINES LTD.


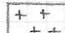
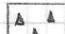
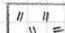
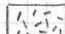


GEOLOGY OF THE BRITANNIA AREA

Plan on a scale of 1"=1 mile above.

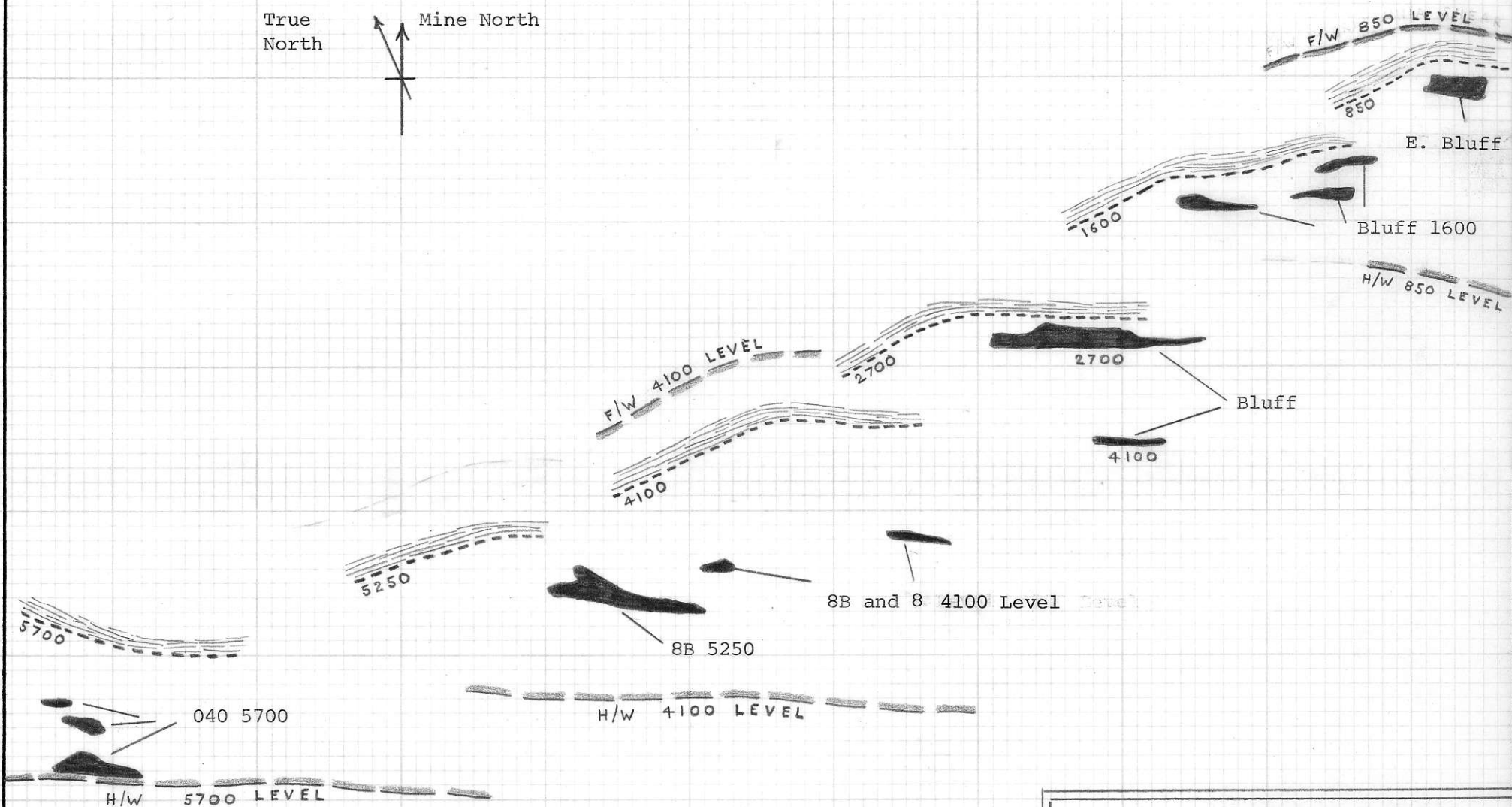
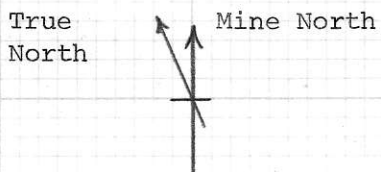
Sections looking east on left.



KEY

-  Sediments, argillaceous & tuffaceous.
-  Andesite flows, tuffs, breccias
-  Dacitic tuff breccia.
-  Dacitic intrusives.
-  Granodiorite & Quartz Diorite.
-  Glacial & Fluvial Gravels.
-  Shear Zone.

826128






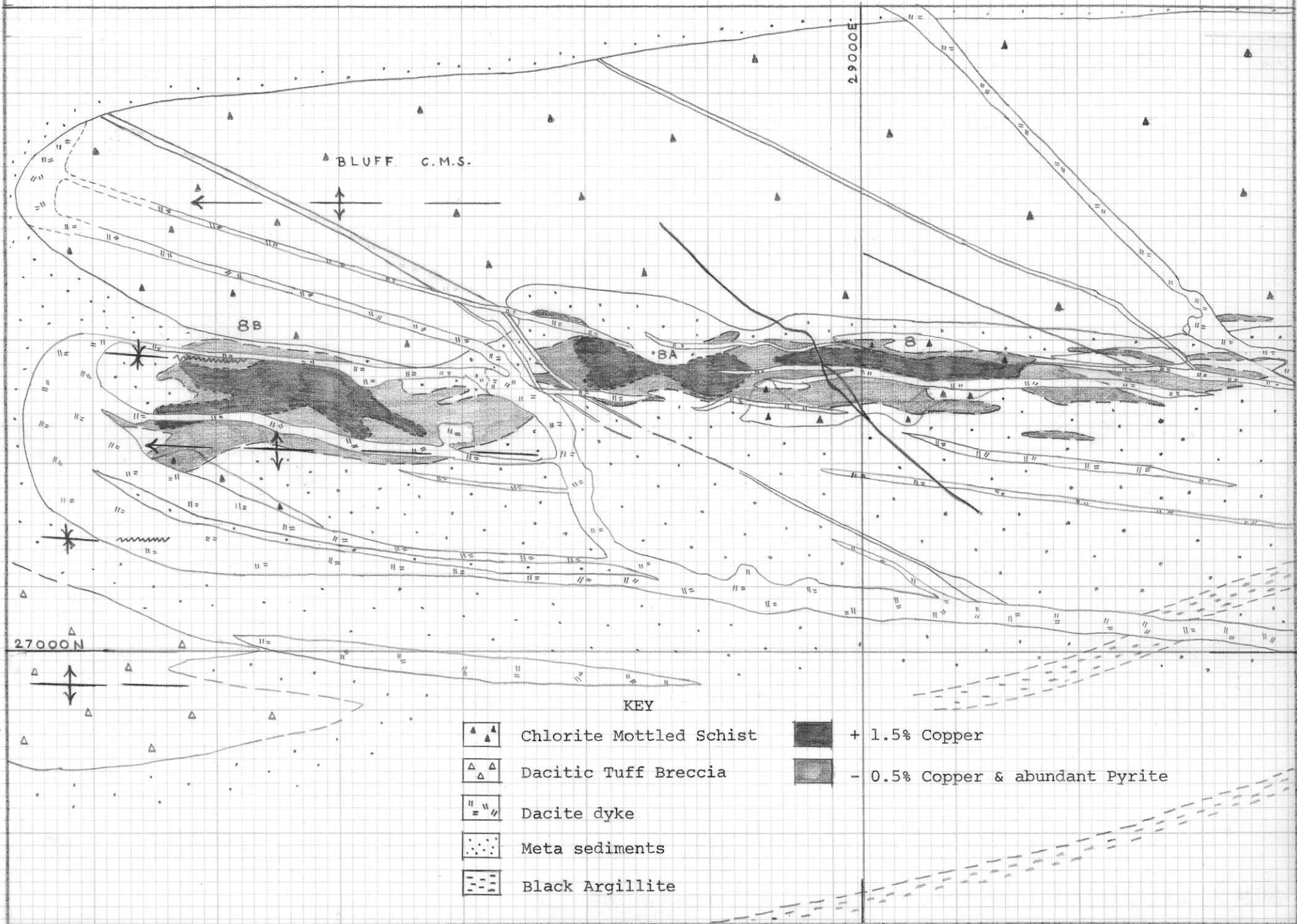
Note:

1. Migration of ore zones from footwall to hangingwall of the Britannia shear zone when traced west and downdip.
2. N.E. trend of the ore zones and the alignment of the NE segment of the footwall schist zone with the migration of maximum intensity of the schistosity in this zone downdip and westwards.
3. The smoothing out of the flexure in the footwall schist zone towards the west until the NE trend is no longer evident on the 5700 level.

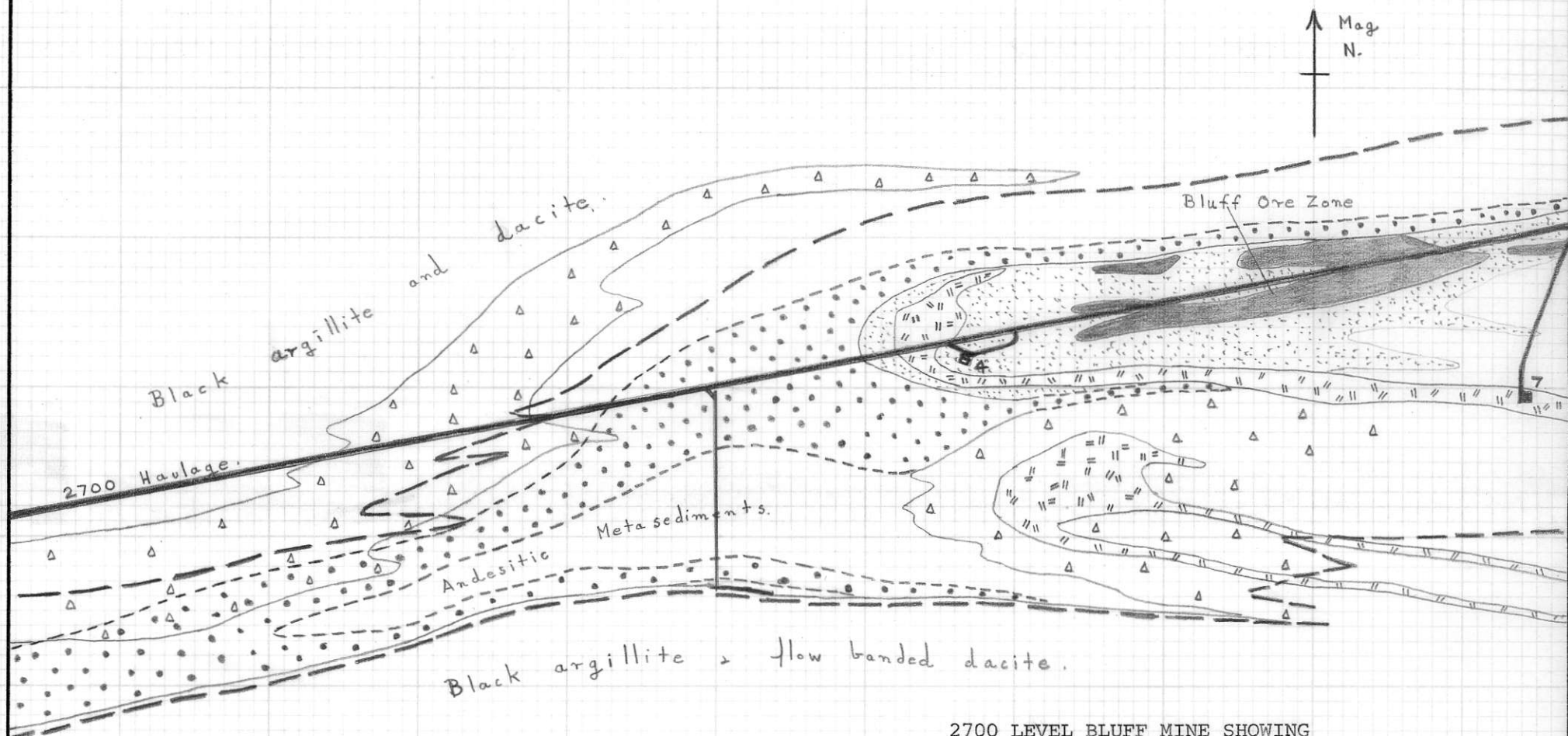
COMPOSITE LEVEL PLAN OF WESTERN PART OF BRITANNIA MINE

0 1000 FT.

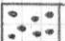

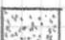


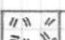
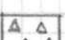
-  Limits of Britannia Shear Zone.
-  Footwall Schist Zone at Various Levels
-  Ore Zones




BCIT - 5086 - V. B. W.

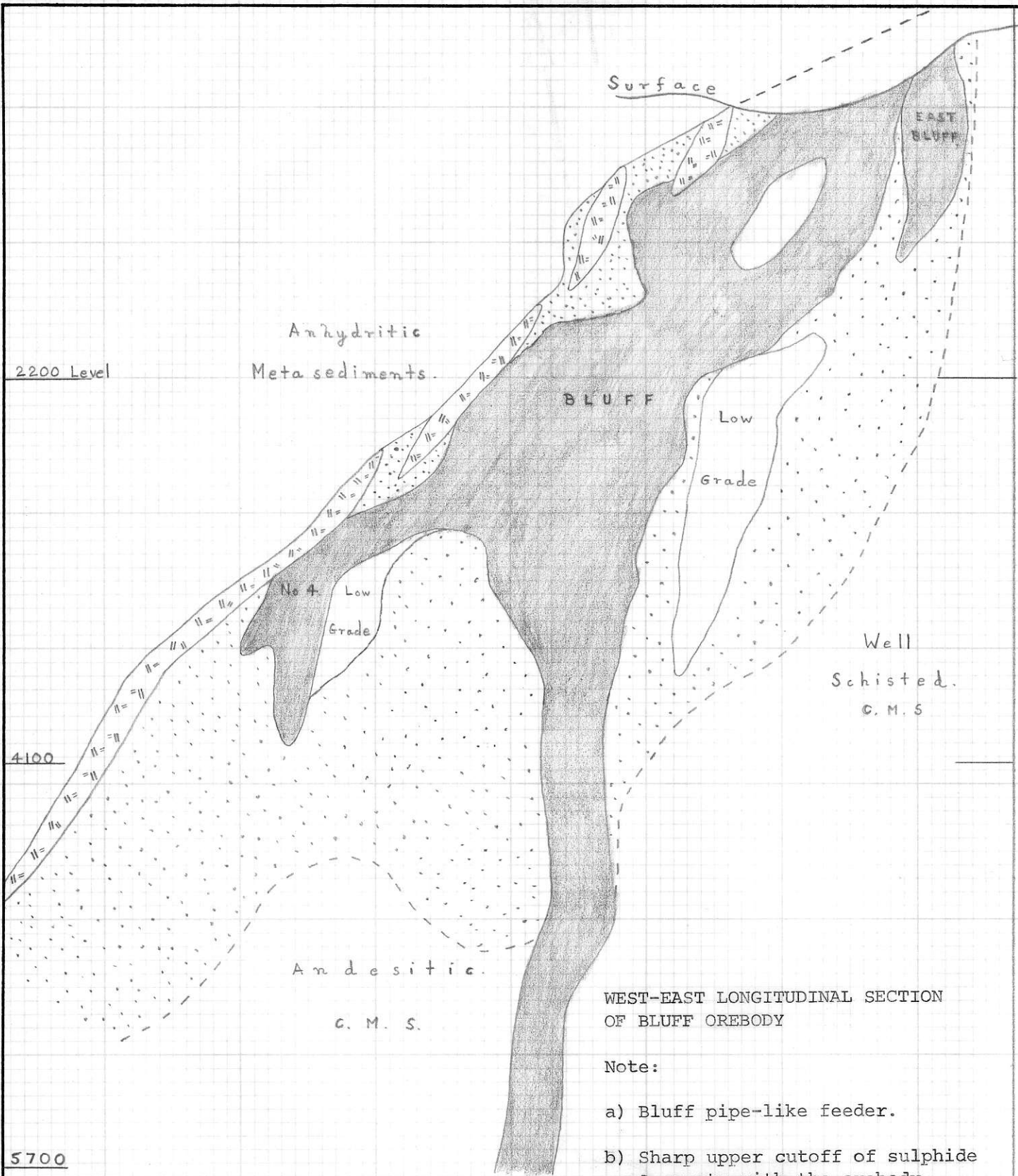


2700 LEVEL BLUFF MINE SHOWING
DISTRIBUTION OF ANHYDRITE

- | | | | |
|---|--------------------------|---|------------|
|  | <10% Anhydrite |  | Limits of |
|  | Pervasive silicification |  | Shear Zone |
|  | Bluff ore zone | | |
|  | Dacite dykes | | |
|  | Tuff breccia | | |

0 scale 500'

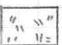
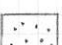



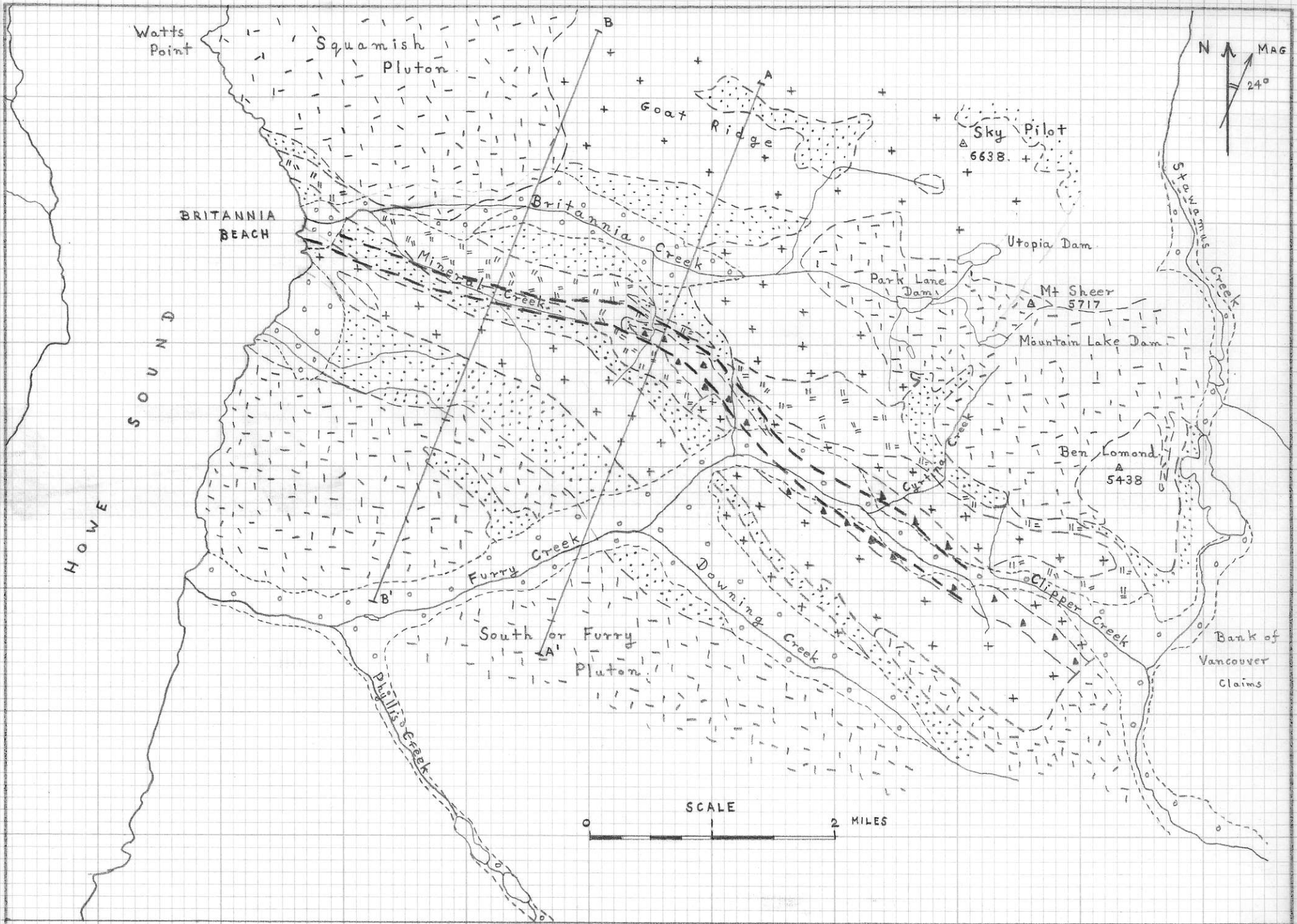


WEST-EAST LONGITUDINAL SECTION OF BLUFF OREBODY

Note:

- a) Bluff pipe-like feeder.
- b) Sharp upper cutoff of sulphide & quartz with the orebody spreading out below this cap.
- c) Stepped habit of ore and dacite dykes.
- d) Halo of pervasive quartz around sulphides.

-  Dacite
-  Pervasive silification
-  +1% Copper



HOWE SOUND

Watts Point

BRITANNIA BEACH

Squamish Pluton

Goat Ridge

Sky Pilot
6638

Utopia Dam

Park Lane Dam

Mt Sheer
5717

Mountain Lake Dam

Ben Lomond
5438

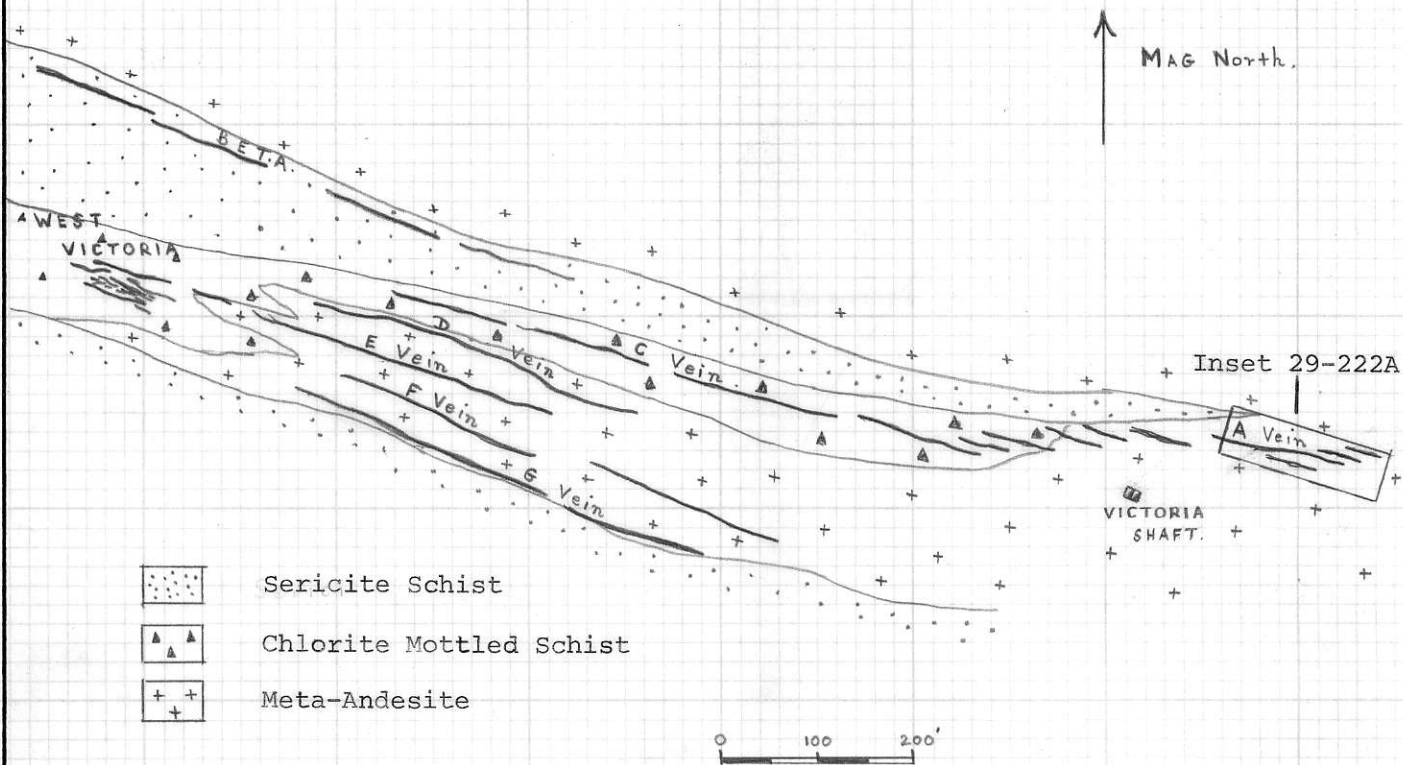
Bank of Vancouver Claims

SCALE

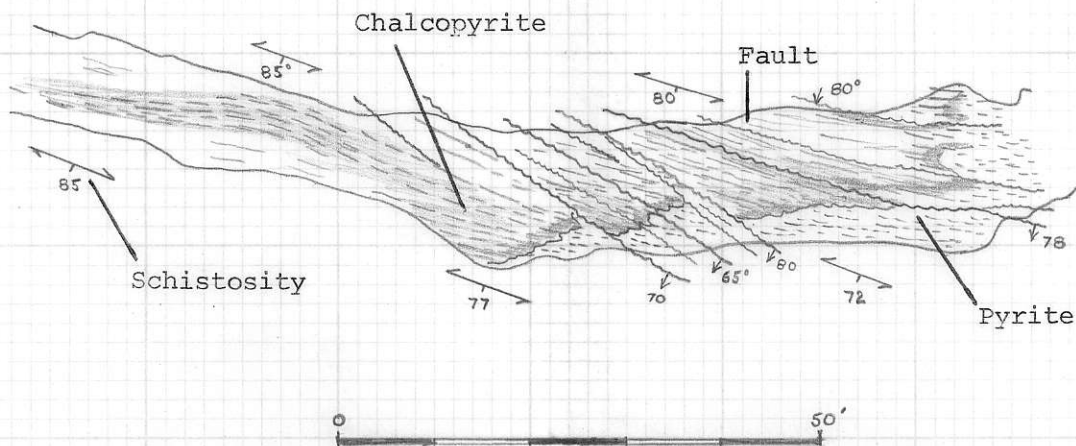
2 MILES

N
MAG
24°

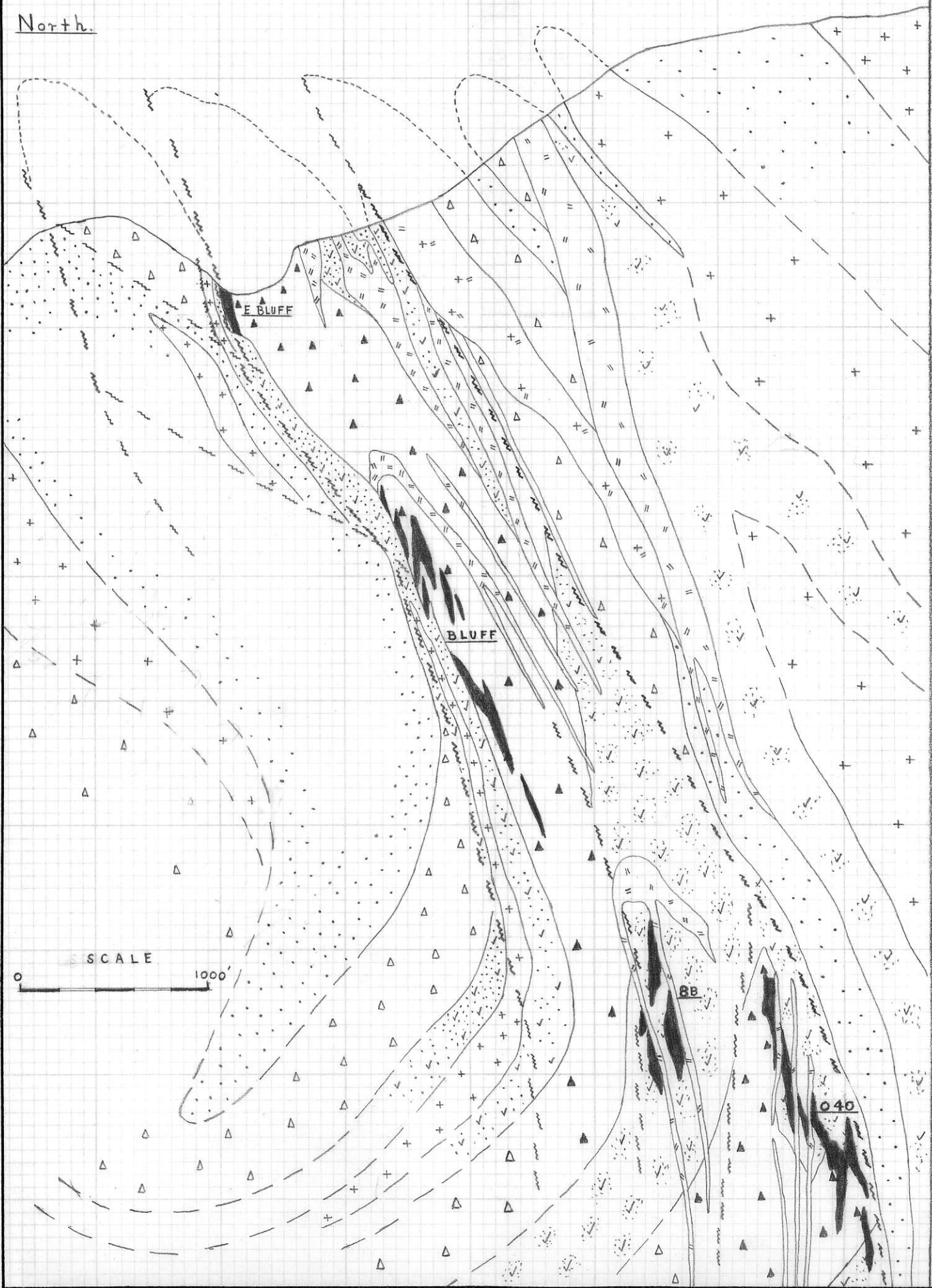
VICTORIA MINE 2800 LEVEL

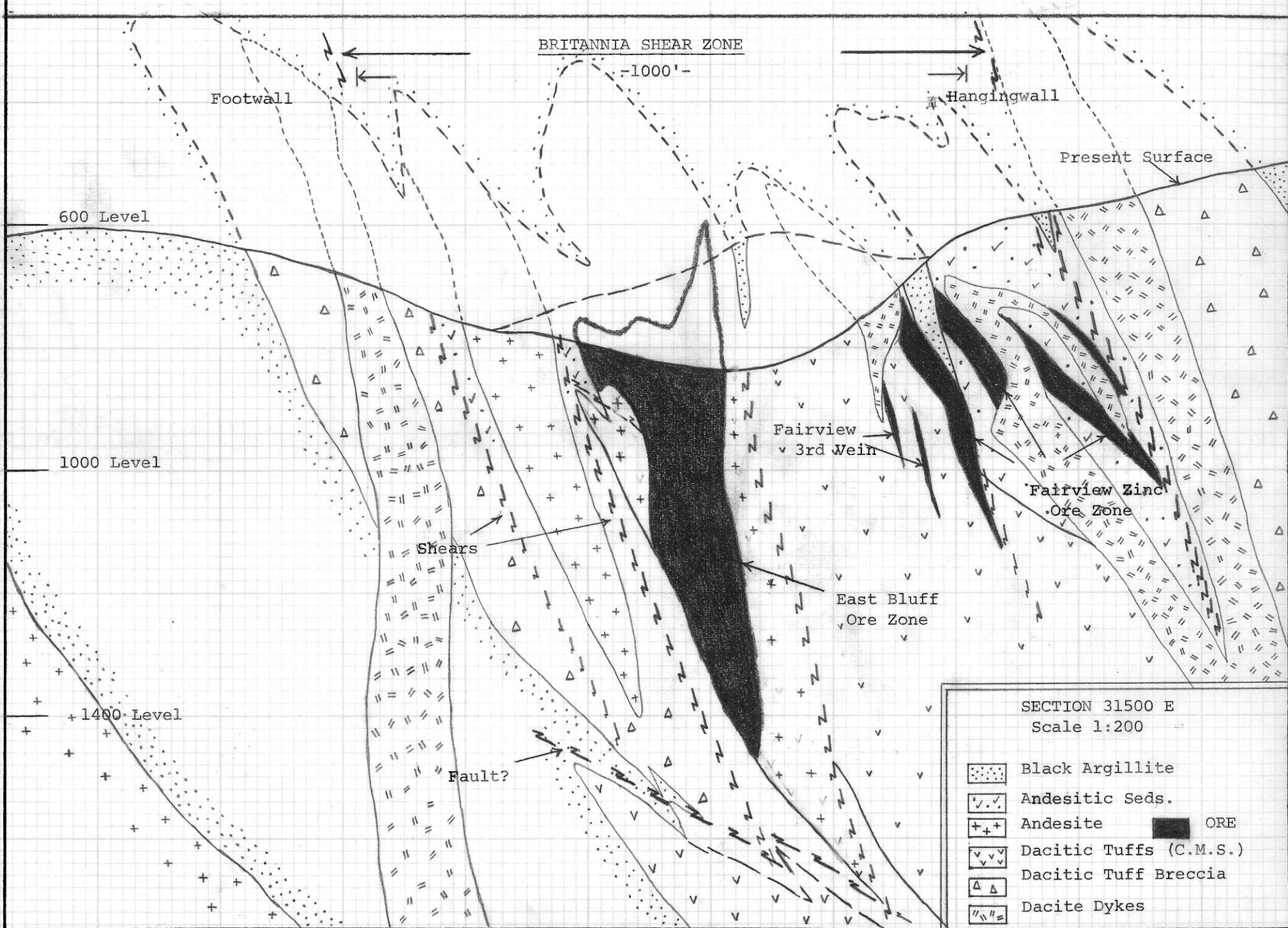


29-222A STOPE SUB LEVEL



North.





BRITANNIA SHEAR ZONE

-1000'-

Footwall

Hangingwall

Present Surface

600 Level

1000 Level

+1400 Level

Fairview
3rd Wein

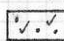
Fairview Zinc
Ore Zone

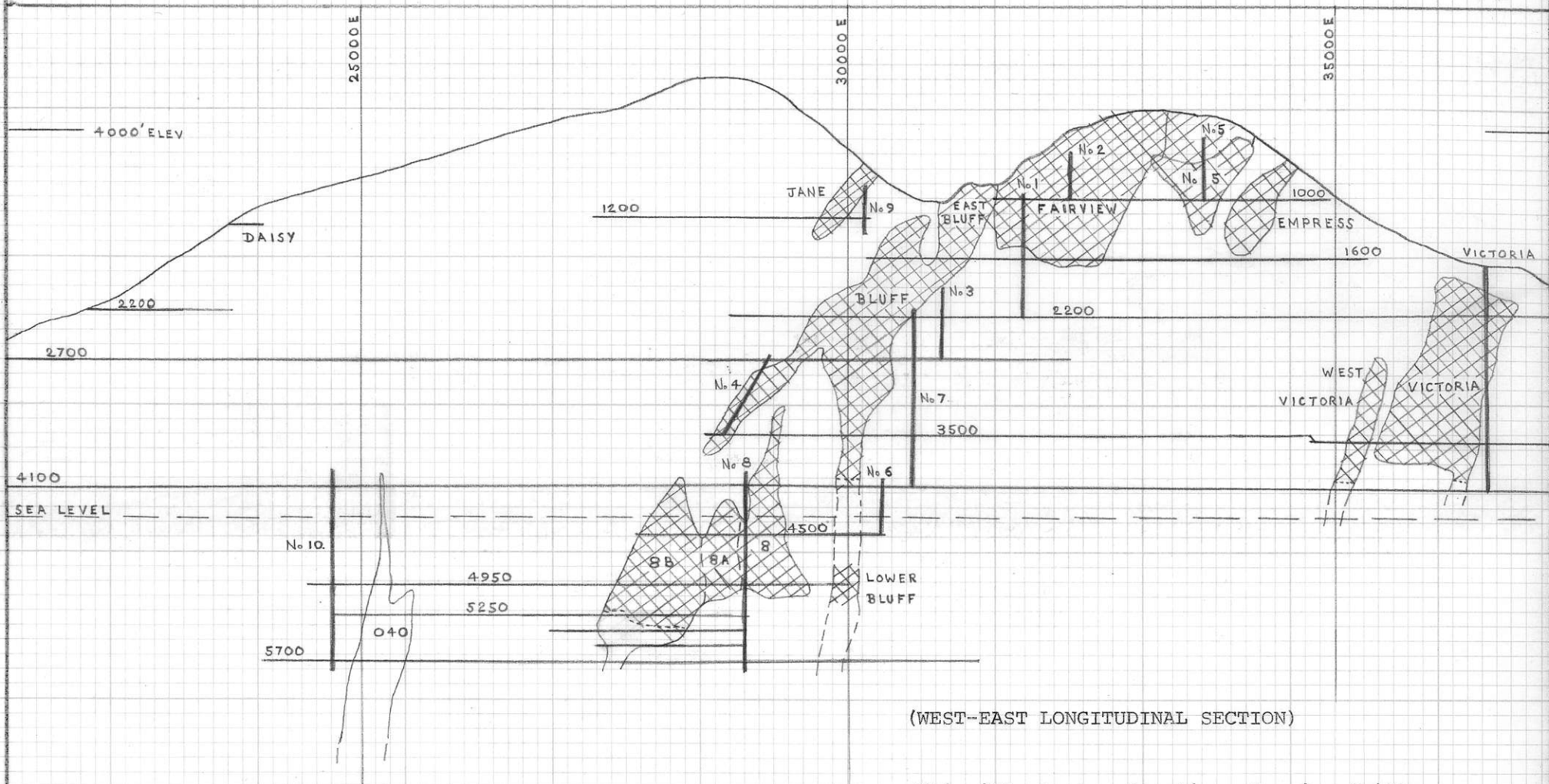
Shears

East Bluff
Ore Zone

Fault?


SECTION 31500 E
Scale 1:200

-  Black Argillite
-  Andesitic Seds.
-  Andesite ORE
-  Dacitic Tuffs (C.M.S.)
-  Dacitic Tuff Breccia
-  Dacite Dykes



(WEST-EAST LONGITUDINAL SECTION)

This illustrates location of major drifts, shafts and ore zones.

 Mined out

BCIT-3076-V-8-M