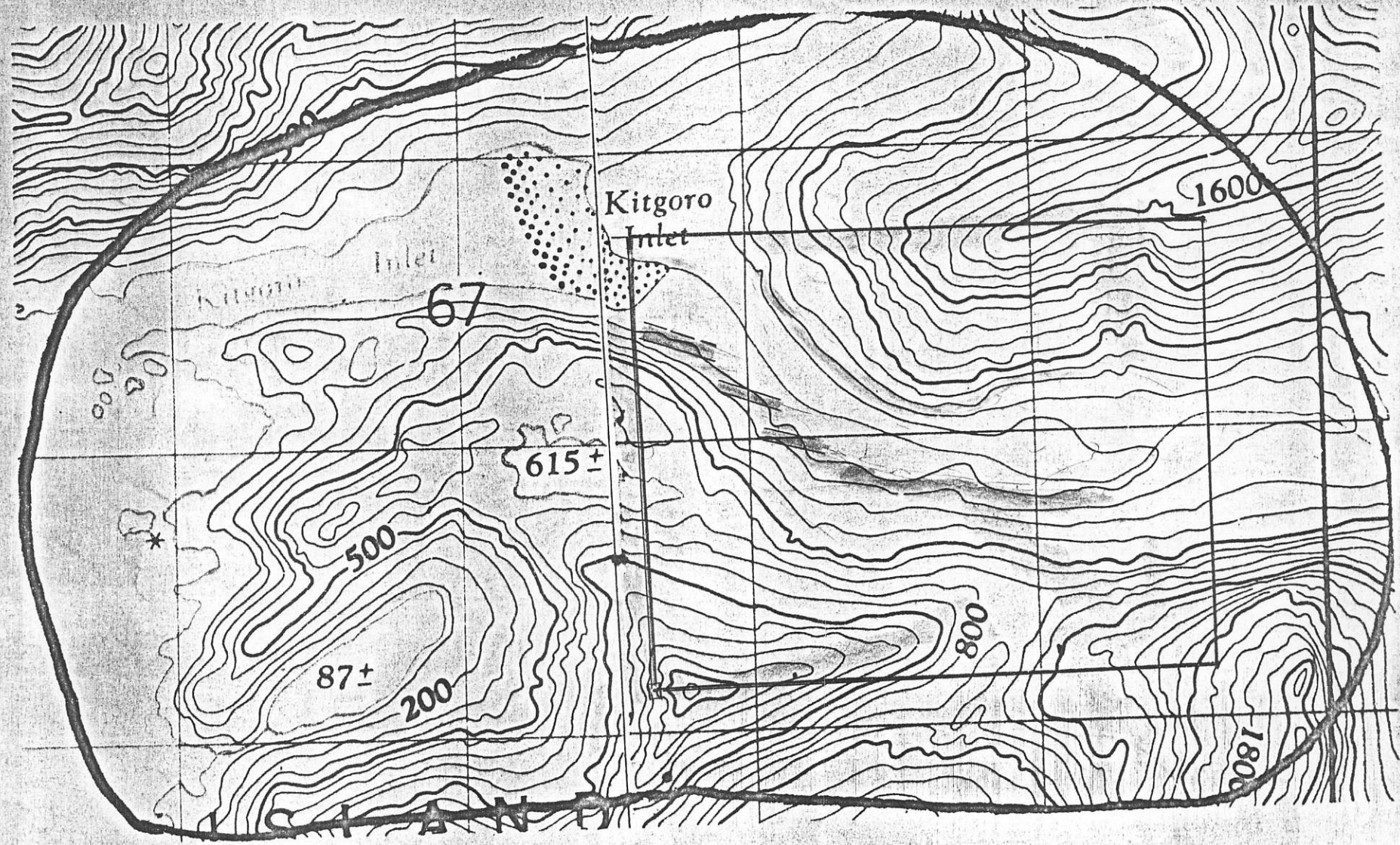


Property Submission → Gold Proposal  
825957

103 F  
Queen Charlotte  
Islands BC

BATEAU

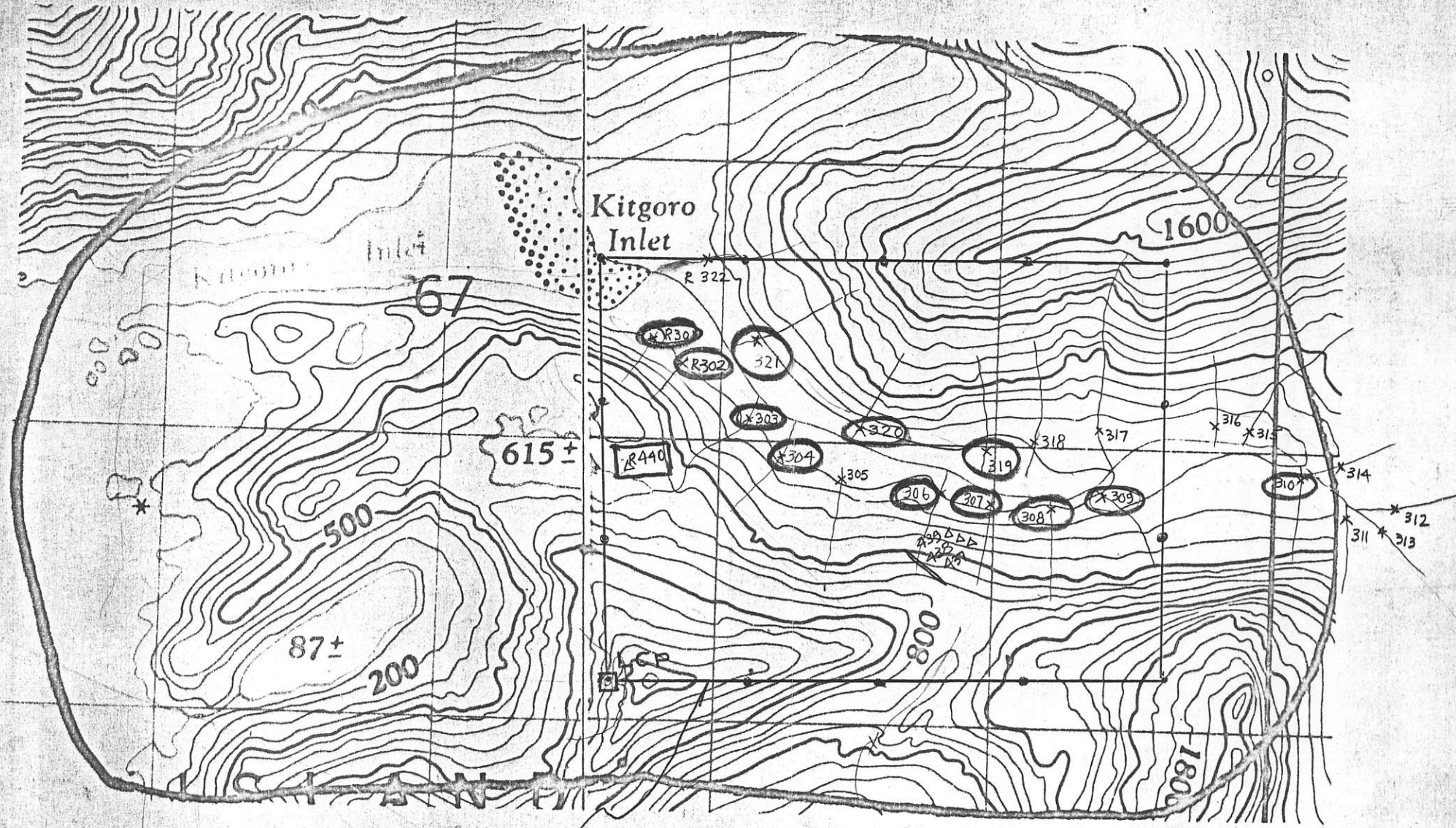


1:20,000  
24-27

Kermutsan  
Kuga  
BFP

BATEAU

1.20,000  
24-27



BATEAUX (12 units)  
Tag No 34222  
Staked July 5, 1978

# BONDAR-CLEGG & COMPANY LTD.

## Geochemical Lab Report

Report No. 28 - 200

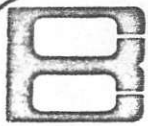
Page No. 3

SAMPLE NO.	As ppm	Au ppb	Hg ppb		SAMPLE NO.	As ppm	Au ppb	Hg ppb	
					78R - 315	10	< 5	120	
					316	25	< 5	180	
					317	53	< 5	640	
					318	28	< 5	325	
					319	400	15	580	
					320	180	10	260	
					321	100	15	240	
					322	50	< 5	85	

*done*

	As ppm	Au ppb	Hg ppb	
301	70	15	420	
302	55	10	355	
303	110	20	570	
304	65	35	980	
305	50	5	180	
306	55	20	235	
307	440	25	1800	
308	90	10	720	
309	70	10	760	
310	2	10	235	
311	5	< 5	345	
312	20	< 5	195	
313	20	< 5	195	
314	23	< 5	150	

*BATEAU*



# BONDAR-CLEGG & COMPANY LTD.

1500 PEMBERTON AVE., NORTH VANCOUVER, B.C. PHONE: 985-0681 TELEX: 04-54554

## Geochemical Lab Report

323-354  
BATEAUX

As; Perchloric Nitric  
Hg; Controlled Aqua Regia  
Au; Fire Assay & Hot Aqua Regia  
Hg; Closed cell Atomic Absorption  
Au; Atomic Absorption As; Colorimetric

Report No. 28 - 200

From JMT Services Corp.

Fraction Used

Date May 26 19 78

SAMPLE NO.	As ppm	Au ppb	Hg ppb	
78C - 1	60	< 5	165	↑
2	52	320	280	UPPER BALLS C
3	7	< 5	125	
4	35	< 5	475	Ball
5	8	< 5	960	
6	10	< 5	1400	
7	5	< 5	1300	
8	5	< 5	>5000	↓

SAMPLE NO.	As ppm	Au ppb	Hg ppb	
------------	--------	--------	--------	--

78C 61	70	< 5	60	1005010
62	25	< 5	115	
63	120	< 5	55	
64	23	< 5	25	
65	55	5	55	
66	110	< 5	145	

# BONDAR-CLEGG & COMPANY LTD.

## Geochemical Lab Report

Report No. 28 - 200

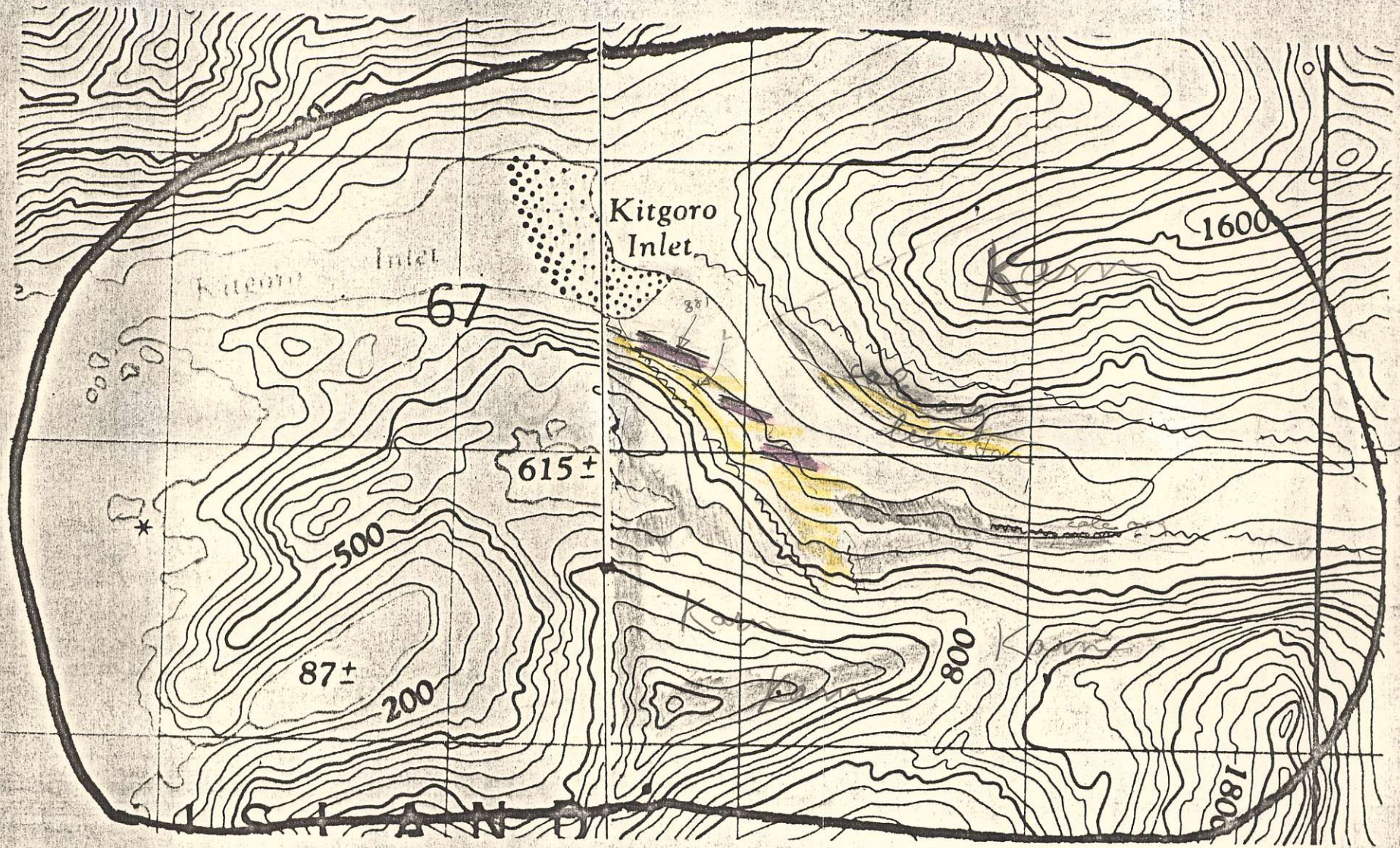
Page No. 2

SAMPLE NO.	As ppm	Au ppb	Hg ppb
78C - 67	110	< 5	95
68	110	< 5	65
69	55	< 5	225
70	440	< 5	170
71	25	< 5	50
72	55	< 5	120
73	70	5	115
74	20	< 5	35
75	53	< 5	140
76	58	< 5	860
77	90	5	560
78	60	< 5	95
79	30	< 5	105
80	55	< 5	90
81	60	10	155
78R - 208	53	< 5	310
209	55	< 5	590
210	28	< 5	3960
211	60	< 5	550
212	20	< 5	>5000
213	15	< 5	1100
214	8	< 5	>5000
215	45	< 5	>5000
216	25	< 5	430
217	180	10	255

B

A

17-72  
1:20,000



BATEAU