

PRIME EQUITIES INC.

release

Rock & Roll

COLIN BURGE
GARM NEWS.

825833

February 28, 1991

EURUS RESOURCE CORP.
No. 40
Trading Symbol: VSE-ERR

THIOS RESOURCES INC.
No. 42
Trading Symbol: VSE-THI

ASSAY RESULTS FROM BLACK DOG DRILLING

Eurus Resource Corp. ("Eurus") and Thios Resources Inc. ("Thios") are pleased to report assay results for seventeen diamond drill holes completed on the polymetallic Black Dog Deposit at their Rock & Roll Project. The Rock & Roll Project, an equal joint venture between Eurus and Thios, is located some ten kilometers northwest of the Snip Mine in the Iskut River area of northwestern British Columbia.

The following table summarizes the more significant assay intervals from RR91-22 and RR91-28 to RR91-43, which tested the Black Dog Horizon, a stratigraphic sequence hosting several zones of strata-controlled, disseminated to well laminated semi-massive to massive sulphides.

HOLE #	SECTION (Metric)	INTERVAL (Feet)	WIDTH (Feet)	GOLD (oz/t)	SILVER (oz/t)	LEAD %	ZINC %	COPPER %
RR91-22*	51+50N (-45)	51.2- 54.8	3.6*	0.067	38.90	0.68	1.59	0.31
		88.2- 91.5	3.3*	0.013	1.52	0.26	1.56	0.14
		132.8-139.7	6.9	0.061	0.71	0.12	0.63	0.17
		149.6-152.9	3.3	0.034	4.36	0.35	1.79	0.22
RR91-28	51+50N (-70)	82.3- 85.6	3.3	0.046	0.17	0.08	0.11	0.05
		228.0-234.9	6.9	0.018	1.29	0.08	0.55	0.09
RR91-29	51+50N (-90)	188.0-197.8	9.8	0.001	2.69	0.37	0.96	0.10
RR91-30	51+50N (-70)	216.8-223.4	6.6	0.120	0.10	0.01	0.03	0.02
RR91-32	51+00N (-45)	65.9- 79.0	13.1	0.018	1.50	0.12	0.64	0.20
		79.0- 85.6	6.6	0.029	5.91	0.49	1.84	0.37
RR91-33	51+00N (-90)	73.4- 76.7	3.3	0.027	2.56	0.26	0.82	0.07
		127.6-139.7	12.1	0.015	2.00	0.21	0.75	0.18

PRIME EQUITIES INC.

release

- 2 -

HOLE #	SECTION (Metric)	INTERVAL (Feet)	WIDTH (Feet)	GOLD (oz/t)	SILVER (oz/t)	LEAD %	ZINC %	COPPER %
RR91-34	51+00N (-50)	146.0-148.3	2.3	0.320	47.60	1.76	3.19	0.59
		162.4-172.2	9.8	0.051	12.17	0.77	5.20	0.85
		218.1-221.4	3.3	0.029	2.40	0.41	1.55	0.19
RR91-35	51+00N (-90)	184.4-194.2	9.8	0.033	5.79	0.30	1.93	0.44
		230.9-240.7	9.8	0.015	1.35	0.13	0.90	0.31
RR91-36	51+00N (-72)	166.6-169.9	3.3	0.011	2.98	0.20	0.94	0.12
		169.9-189.6	19.7	0.080	20.05	2.16	6.41	1.08
		189.6-194.2	4.6	0.037	2.71	0.11	1.44	0.58
RR91-37	51+00N (-55)	219.4-252.2	32.8	0.093	11.56	1.09	5.07	1.09
		252.2-258.8	6.6	0.020	1.06	0.07	0.45	0.30
RR91-39	51+00N (-90)	220.1-230.3	10.2	0.003	1.62	0.33	0.96	0.09
		365.4-368.7	3.3	0.020	0.18	0.01	0.18	0.05
RR91-42	50+50N (-45)	45.2- 51.8	6.6	0.011	2.54	0.24	0.84	0.20
RR91-43	50+50N (-90)	67.9- 76.8	8.9	0.078	4.88	0.35	1.18	0.28
		79.1-102.0	23.0	0.013	1.92	0.24	1.21	0.27
		115.1-134.8	19.7	0.001	0.67	0.26	1.41	0.23

*This portion of drill hole RR91-22 was previously released.

Drill holes RR91-31, RR91-38, RR91-40 and RR91-41 returned no significant results.

The attached plan map shows that drilling as of today's date has tested the Black Dog Horizon over an area of 250 meters in strike length and some 200 metres down-dip. The strike extent of the base metal sulphide zones within the Black Dog Horizon has not yet been constrained in either the northwestern or southeastern direction. Drill hole results within a higher-grade, 220-metre portion of the Black Dog Horizon include those from holes RR90-01 to 06, RR91-13 to 15, RR91-21, RR91-22, RR91-26, RR91-32 to 37 and RR91-43. Drilling is presently underway on Section 50+50N down-dip of RR91-43 where drill hole RR91-50 intersected a 2.0-meter semi-massive to

PRIME EQUITIES INC.

release

- 3 -

massive sulphide zone and a second 2.0-meter interval of veined and laminated base metal sulphides. Drill hole RR91-44 also intersected 2.0 meters of semi-massive to massive sulphide within a 5.6-meter interval of veined and laminated base metal sulphides. Drill hole RR91-51 is now in progress midway between RR91-44 and RR91-50.


The next Section to be drilled will be 50+00N to continue testing a series of ground HEM conductors coincident with the Black Dog Horizon on a sectional step-out pattern to the southeast. These HEM conductors have been traced over a minimum strike extent of 1,300 metres and comprise a portion of the approximate 7,000-metre length of airborne EM conductors detected by airborne geophysical surveys flown by Aerodat Ltd. over the area.

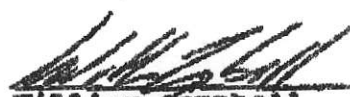
A second drill rig is being added immediately to assist with the sectional step-out drilling pattern and to begin testing of additional targets on the Rock & Roll property. Additional targets include soil and basal till geochemical anomalies, and HEM and IP geophysical conductors. One such target is a Cu-Zn-Au-Ag geochemical anomaly recently detected by rock chip sampling along Section 54+00N as part of a basal till drilling program. This geochemical anomaly is directly coincident with ground HEM conductors on-trend to the northwest of the Black Dog Deposit. A number of holes are also planned as stratigraphic tests across the strike of bedrock geology to augment the geological database for the property.

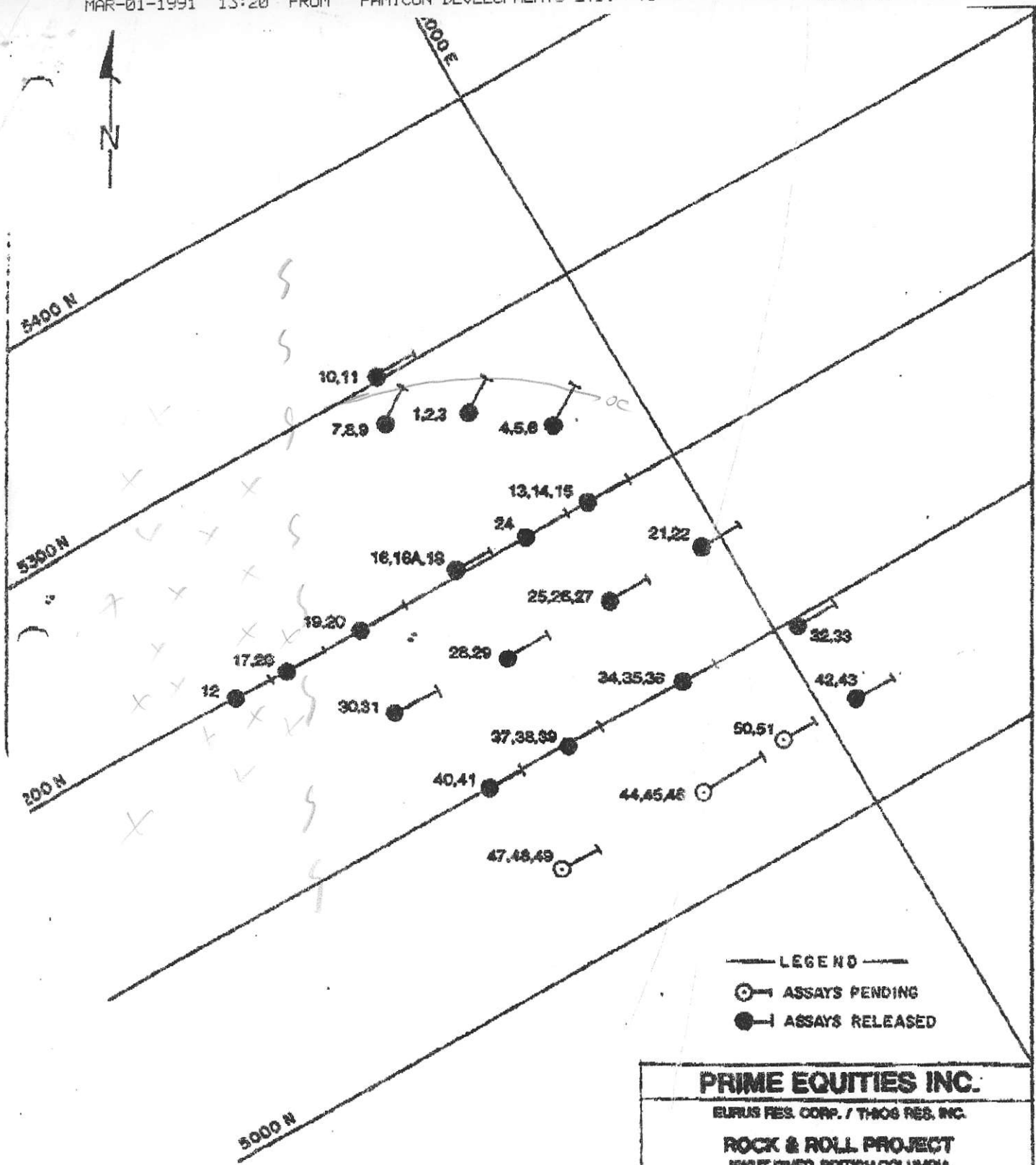
Prime Explorations - a division of Prime Equities Inc. has been contracted to provide management and consulting services on behalf of Eurus and Thios at the Rock & Roll Property.

ON BEHALF OF THE BOARD
OF DIRECTORS

ON BEHALF OF THE BOARD
OF DIRECTORS

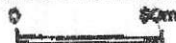

William Campbell
Secretary
Eurus Resource Corp.


William Campbell
Secretary
Thios Resources Inc.



believe this information to have been obtained in accordance with standard industry practices, we make no representation with respect to, nor do we assume any liability for the correctness thereof.

EXPLORATIONS, a Division of Prime Equities Inc.

PRIME EQUITIES INC.	
EURUS RES. CORP. / THOS RES. INC.	
ROCK & ROLL PROJECT ISKUT RIVER, BRITISH COLUMBIA	
DRILL PLAN (Unsurveyed Collar Locations)	
Date: February 27, 1991	Drafted by: E.R.
 Scale 1 : 2,500	

TOTAL P.05