

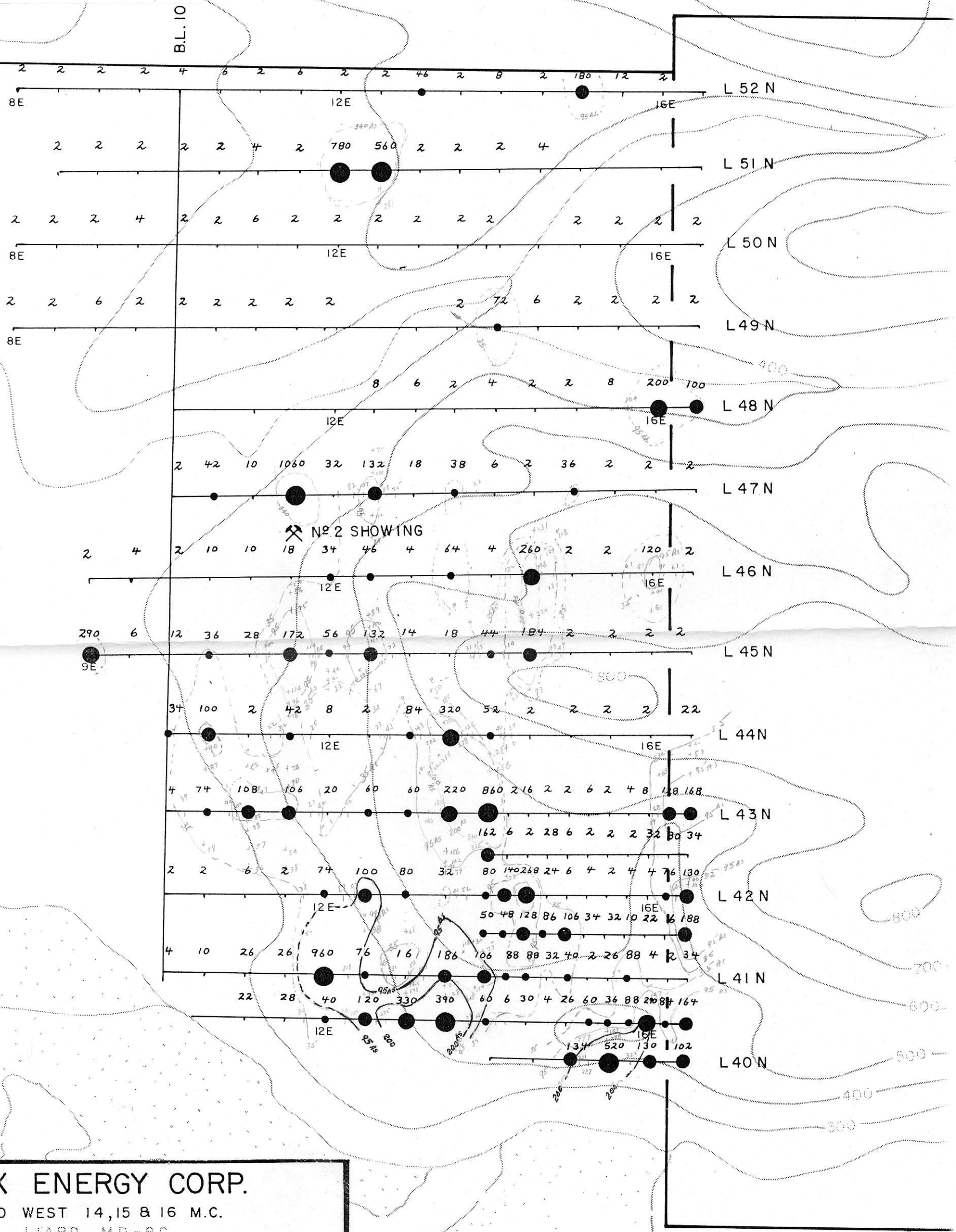
LEGEND:

- ABOVE BACKGROUND
35-94 ppm
- SLIGHTLY ANOMALOUS
95-199 ppm
- ANOMALOUS
200-339 ppm
- HIGHLY ANOMALOUS
>340 ppm

R. Marzoc
November 14, 1983

As

LO WEST
16



APEX ENERGY CORP.
HEMLO WEST 14, 15 & 16 M.C.
LIARD MD.-B.C.

GEOCHEMICAL SURVEY
As RESULTS IN P.P.M.



BY R.M., BVH./rwr. NTS 104-B-11
DATE SEPT. 1983 825815 FIGURE 12

ISKUT