

# MINNOVA

MEMORANDUM

DATE: May 9, 1991  
TO: I. D. Pirie, G. S. Wells  
COPIES TO: file  
DE FROM: A. G. French  
SUBJECT: Hoodoo 1-5 Claims

825782

---

Please find attached a summary report on the above group of claims.

*A G French*

## Hoodoo Claim Group - Property Update May 1991

### 1.0 Introduction

The objective of this report is to review the existing in house information on the Hoodoo Claim Group, together with recent GSC, MEMPR and George Cross publications.

### 2.0 Location

The Hoodoo claims are situated on a narrow spur of land directly north of Hoodoo Mountain and the Iskut River. fig.1. The property is bounded to the north, west and east by ice.

### 3.0 Claim Information

The Hoodoo Claim Group comprises 61 units in 5 contiguous claims within the Liard Mining Division. Claim status is shown below in Table 1. The distribution of claims to the south of Hoodoo Mountain is shown in fig.2, updated to 18 April 1990.

Table 1

Claim Name	Record Number	Month	Units	Area (ha)	Record Date	Expiry Date
Hoodoo 1	2447	09	10	250	09/08/82	09/08/91
Hoodoo 2	2448	09	15	375	09/08/82	09/08/91
Hoodoo 3	2449	09	15	375	09/08/82	09/08/91
Hoodoo 4	2450	09	20	500	09/08/82	09/08/91
Hoodoo 5	2451	09	01	25	09/08/82	09/08/91

### 4.0 Previous Work - Kerr Addison

- a) Report on Geology & Geochemistry of the Hoodoo Claim Group. P.Holbek 1982.
- b) Summary report on the Stikine Plateau Project. P.Holbek 1983.
- c) Report on Geology & Geochemistry of the Hoodoo Claim Group. P.Holbek October 1983.
- d) Report on the Geology, Geophysics, Rock Trenching and Sampling, Hoodoo Claim Group. R.J.Fraser October 23 1984.



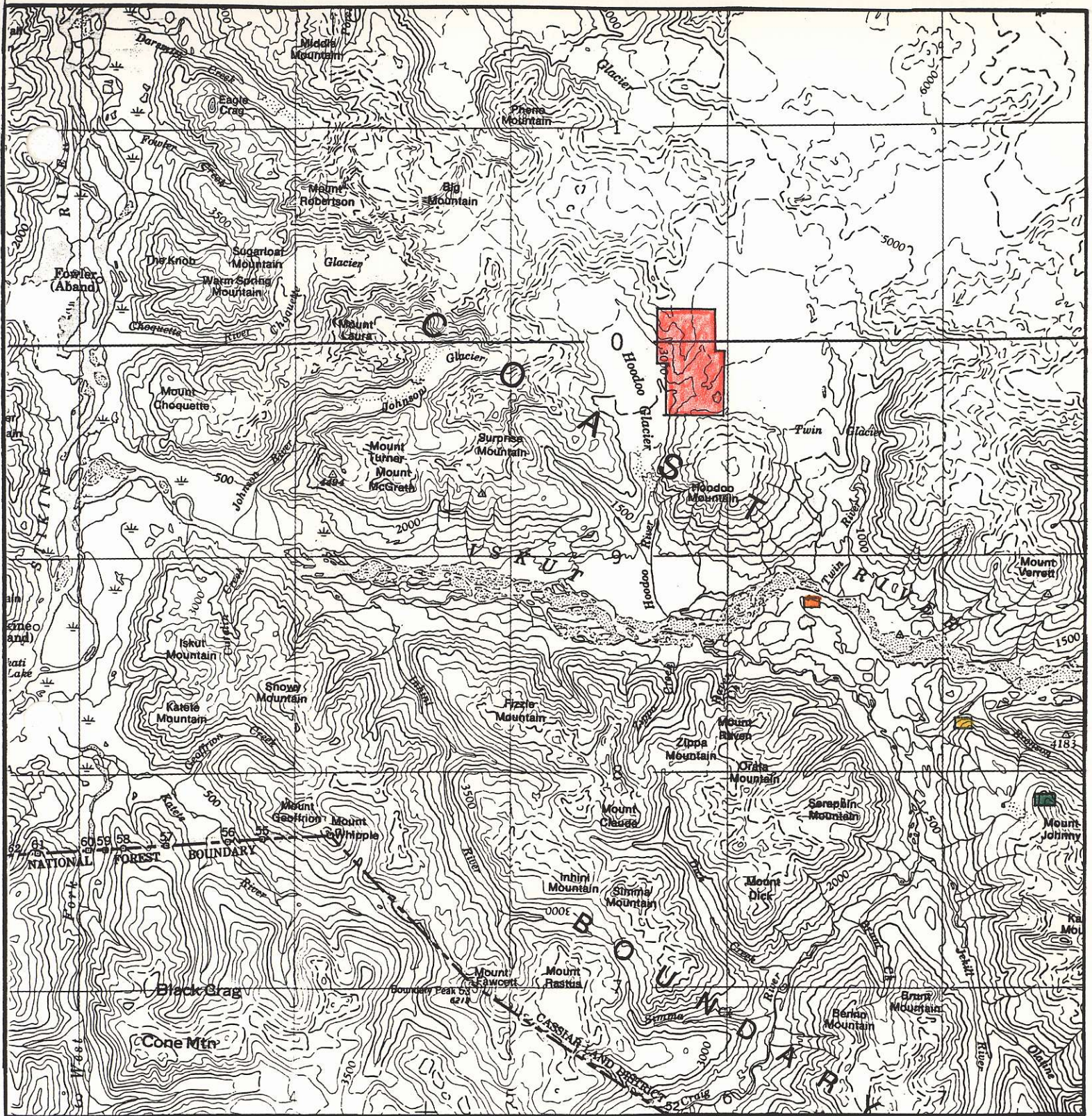
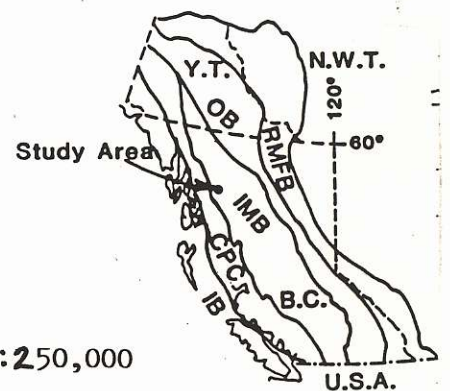


Fig. 1

- Hoodoo 1-5 Claims, Kerr Addison
- Rock & Roll Property, Eurus/Thios, Black Dog Zone
- Snip, Cominco/Prime
- Johnny Mountain, Skyline



1:250,000

U.S.A.



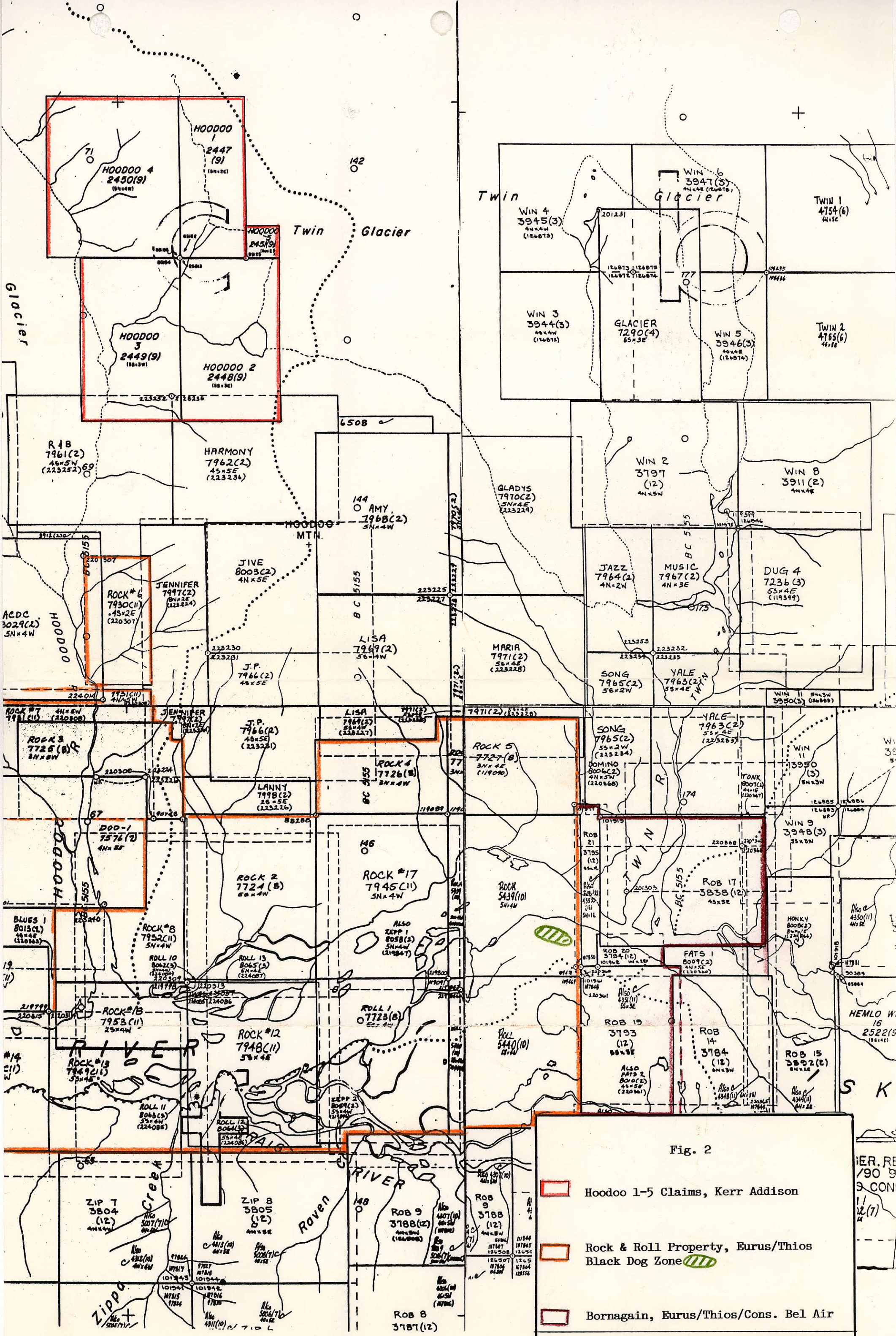


Fig. 2

- Hoodoo 1-5 Claims, Kerr Addison
- Rock & Roll Property, Eurus/Thios  
Black Dog Zone (//)
- Bornagain, Eurus/Thios/Cons. Bel Air



## 5.0 Current Geological Papers

- a) Stratigraphy & structure of the Twin Glacier - Hoodoo Mountain Area NW B.C.. J.A.Fillipone & J.V.Ross (UBC) Geological Fieldwork 1988. Report 1989-1.
- b) Mesozoic stratigraphy and setting for some mineral deposits in the Iskut River Map Area NW B.C.. R.G.Anderson & D.J.Torkelson. Current Research Part E GSC Paper 90-1E.

## 6.0 Regional Geology and Mineralization

The Hoodoo 1-5 claims are underlain by the Upper Triassic Stuhini Group which regionally comprises intermediate to basic lavas, tuffs, clastic rocks and limestone cut by a variety of intrusions. The Stuhini Group correlates with F.A.Kerr's Unit 11, GSC Memoir 246, 1948.

The Stuhini Group is locally intruded and unconformably overlain by Quaternary dykes and volcanics. eg. Hoodoo Mountain.

Precious and base metal occurrences being explored and/or developed within the Upper Triassic, are Kerr, Doc, Inel, Stonehouse, Rock and Roll (Black Dog) and Snip.(fig.3)

The nearest area to the Hoodoo Claims, with published exploration information is the Rock and Roll property, (Eurus/Thios Resources), located 12-15 km to the SE. Chip sampling of exposed base metal mineralization in three hand trenches returned assays ranging from:

Au 0.054-0.344 oz/ton, 1.8-11.8 g/tonne. (George Cross)  
Ag 4.54-150.0 oz/ton, 155.6-5142 g/tonne.  
Pb up to 8.99%  
Zn up to 23.0%  
Cu up to 2.42%

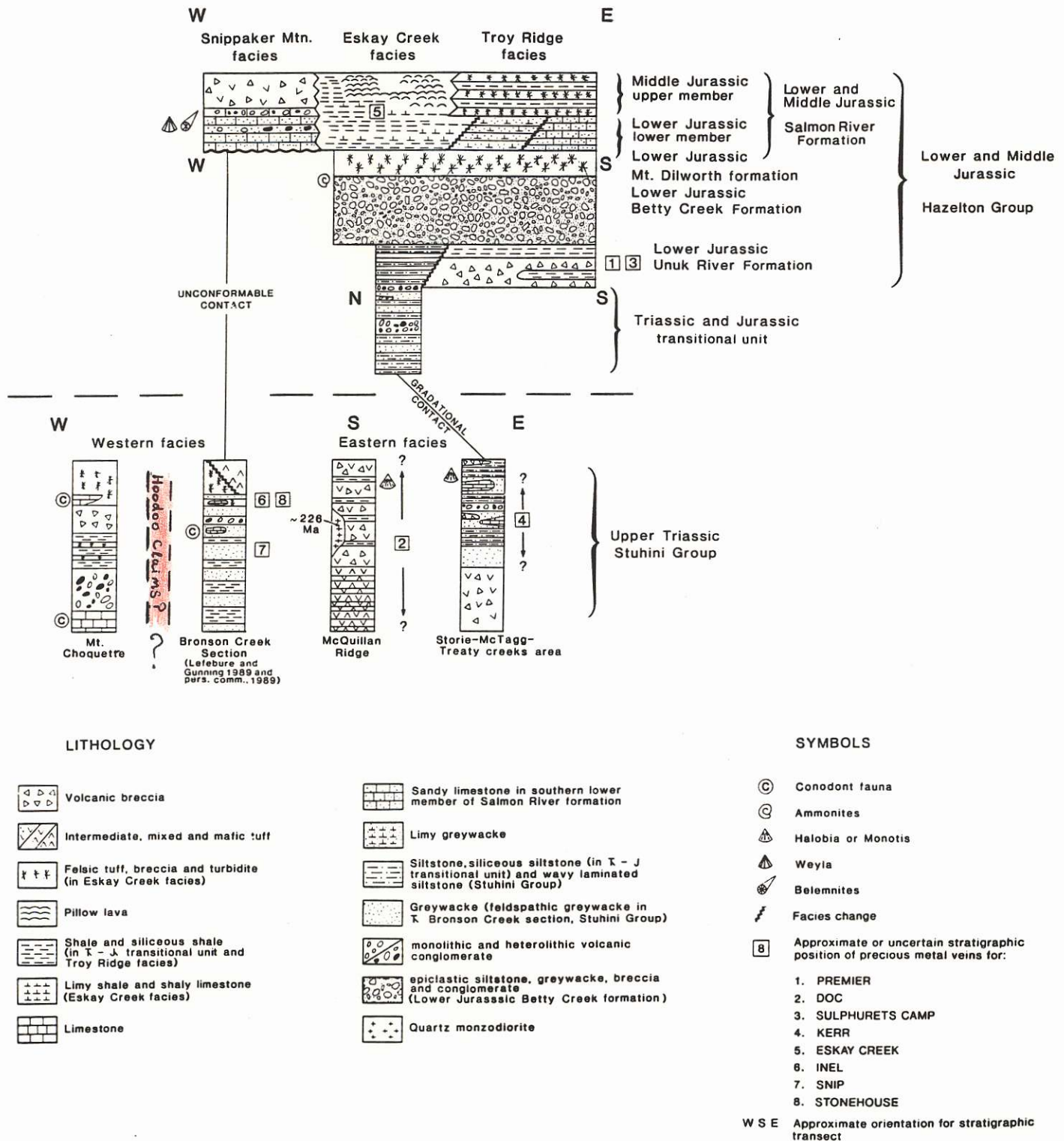
..... over widths varying from 0.24 to 1.5m.

Drilling intersects for the Black Dog horizon are documented in Appendix 1.

The GCN describes the Black Dog horizon as a stratigraphic sequence hosting several zones of strata controlled, disseminated to well laminated semi massive to massive sulphides. Strike extent of the zone is open to the NW and SE.

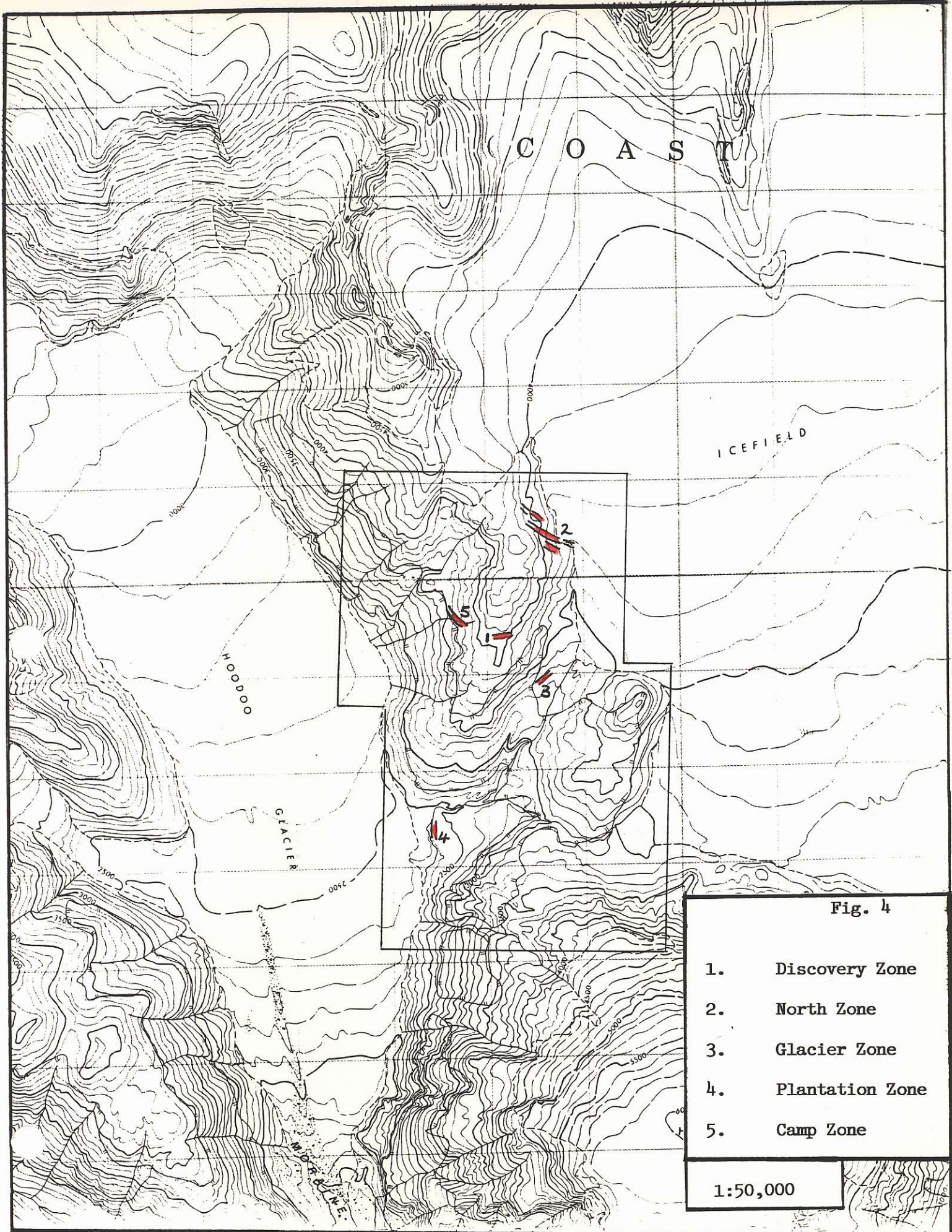
## 7.0 Property Geology and Mineralization

The Hoodoo Claims were acquired for their potential to host epithermal mineralization. Sampling and mapping outlined five zones (fig.4) with follow-up exploration concentrated on two zones of anomalous silver mineralization, the Discovery and North Zones.(fig.5)



**Figure 3.** Schematic facies changes in Triassic and Lower and Middle Jurassic strata. Facies changes occur toward the east and northeast for Upper Triassic Stuhini Group and both south to north and east to west for Upper and Middle Jurassic Salmon River Formation in Iskut River map area.







## 7.1 Discovery Zone

Dimension: Gossan area 350m length, varying 10-50m in width.

Mineralization: 2-5% pyrite as disseminations, small masses and stringers. Two types and probable stages of pyrite mineralization are present:

- a fine grained 'sooty' pyrite.
- coarser brassy yellow pyrite.

Silver is associated with the 'sooty' pyrite. Only background gold values are present.

Host: silicified felsic tuffs & lapilli tuffs.

Alteration: silicification, sericitization, kaolinization. Alteration extends 100m south, 250m+ north.

Results: Significant values were recorded from Trench 1 only. Samples F-HO-84-1 to F-HO-84-7 returned 1.26 oz/ton  $A_g$  (43.2 g/tonne) over 7.4m. Mineralization trends WNW with strike potential of 150m.

Geophysics: Pulse EM failed to outline any concentration of sulphides at depth or near surface.

## 7.2 North Zone

Dimension: 450 x 25m, trending E-W. Western edge faulted off but open on strike to east beneath Twin Glacier.

Mineralization: 2-7% disseminated and stringer pyrite. Similar to Discovery Zone 'sooty' and brassy yellow pyrite. Silver concentrated in sooty variety. Background to weakly anomalous gold.

Host : carbonatized mafic volcanic at faulted contact with sediments.

Alteration: carbonate mainly associated with mineralization. No alteration halo comparable to the Discovery Zone.

Results: silver averaged 3-5ppm. However, a selected grab from a 3-5cm pyrite vein returned 4.8 oz/ton (164g/tonne). Silver although overall of low tenor, occurs throughout the strike length and over an elevation of 140m. Gold values although not high do show a slight increase in grade with a decrease in elevation. Higher elevations <50ppb, increasing to 100-150ppb at lower elevations.

Geophysics: Little or no Pulse EM response. No IP anomaly from gossan area.



### 7.3 Glacier Zone

Similar to the Discovery Zone in appearance but not chemistry. Traces of barite and sphalerite are present but the zone is essentially barren. The zone is in contact with limey greywackes.

### 7.4 Plantation Zone

Only weak Sb and As anomalies outlined. Mineralization is reportedly post Hoodoo dyke emplacement.

### 7.5 Camp Zone

Mineralization and anomalous soil geochemistry requires further definition.

## 8.0 Discussion

Exploration on the Hoodoo Claims has focused on the epithermal silver target. The grades, although locally interesting do not warrant following up considering the projects location and the current economics of silver mining.

The gold mineralization varies from background to weakly anomalous, averaging <50ppb, and is not considered an attractive exploration target.

Additional trace elements analyzed are As, Ba, Sb, Hg, Tl. Holbek's interpretation concludes that all of the elements show significant levels of correlation, suggesting a common epithermal origin, possibly related to Hoodoo Volcanism.

Little exploration was undertaken for base metals with only a few rock samples analyzed for Cu, Pb, Zn. Two isolated chip samples from the Discovery Gossan returned:

R-82-HO-27C,	Cu 125 ppm
	Pb 2170 ppm
	Zn 35 ppm

R-82-HO-31,	Cu 52 ppm
	Pb 780 ppm
	Zn 1190 ppm

No lithogeochemical studies were undertaken.



## 9.0 Conclusions

The epithermal mineralization model has been adequately explored, with the exception of drill testing. However, models for massive sulphide mineralization have not been fully explored and therefore a lithogeochemical sampling programme is recommended to test for base metals and alteration indicators.

A proposed programme has to be limited to \$25000 which is the budget figure allotted to maintain the claims in good standing for two years.

A.G.French    9 May 1991



**ROCK & ROLL ASSAYS PENDING** - Eurus Resource Corp. and Thios Resources Inc. expect to receive assays in the next few days from a drilling program carried out on the Rock & Roll project located 10 km northwest of the SNIP mine in the Iskut River area of northwest B.C. SEE MAP OVERLEAF PAGE 1. The companies can jointly earn a 100% interest by spending \$1,000,000 by 5Mar95 and may also jointly pay \$500,000 to **PRIME RESOURCES GROUP INC. (PRU-V)** by 13Mar95, subject to a 1% net smelter return royalty. A \$1,500,000 program is underway to evaluate a polymetallic volcanogenic massive sulphide zone discovered last year. Drilling resumed Jan.13 with closely-spaced holes testing the Black Dog horizon, a stratigraphic unit hosting several zones of base metal sulphide mineralization. To Feb.12, the 28 drill holes have been completed totalling 3,250 meters. The property being drilled roughly 100 - 200 meters above sea level.

The Rock & Roll property is comprised of 21 claims totalling 351 units covering 8,000 hectares roughly bisected by the Iskut River. A total of 19 chip samples taken of exposed base metal sulphide mineralization in three hand trenches returned assays ranging from 0.054 to 0.344 oz.gold /ton and 4.54 to 150.0 oz.silver /ton respectively, and up to 8.99% lead, 23% zinc and 2.42% copper over widths ranging from 0.8 to 5.2 feet. Eurus and Thios followed the trenching with a nine-hole drilling program last September; see results below:

HOLE NO.	INTERVAL METERS	LENGTH FEET	GOLD OZ/T	SILVER OZ/TON	LEAD %	ZINC %	COPPER %
RR90-1	11.20-20.85	31.7	0.080	25.7	2.07	5.35	0.58
Incl.	14.40-17.15	9.0	.121	40.2	2.77	7.21	1.00
	58.75-59.45	2.3	.057	11.4	1.17	4.37	.69
RR90-2	18.40-28.80	34.1	.048	14.3	1.28	4.27	.49
Incl.	22.82-24.50	5.5	.116	27.5	2.83	8.81	.60
	54.75-55.60	2.8	.030	6.17	.52	2.81	.96
RR90-3	18.00-20.20	7.2	.031	1.60	.66	2.95	.05
	29.50-30.50	3.3	.011	3.61	.38	1.94	.23
RR90-4	19.34-20.34	3.3	.113	6.78	.75	2.14	.26
	23.88-25.00	3.7	.031	2.09	.10	.72	.38
	28.18-30.76	8.5	.062	7.84	.61	2.79	.76
RR90-5	19.83-21.82	6.5	.038	2.39	.22	.78	.12
	28.39-34.00	18.4	.055	10.8	.90	3.26	.66
RR90-6	8.26-9.08	2.7	.046	6.28	.46	.83	.17
	42.47-47.63	16.9	.070	7.05	.48	3.25	1.07
	52.58-57.00	14.5	.039	7.58	.66	3.18	.96
RR90-7	7.33-9.00	5.5	.007	2.66	.31	1.16	.24
	13.47-19.00	18.1	.005	.54	.05	1.31	.39
RR90-8	12.30-16.90	15.1	.006	.70	.03	2.79	.72
RR90-9	11.24-12.07	2.7	.013	1.09	.20	1.08	.21
	17.00-22.00	16.4	.013	.60	.03	1.01	.32

All the above holes encountered one or more base metal sulphide-bearing intercepts, although hole-to-hole correlation of these zones is not well understood as yet. Concurrent with the drilling, Eurus and Thios increased their land position from two to 21 claims by staking. The Bornagain property, adjoining to the east, was acquired and is now a joint venture among Eurus (37.5%), Thios (37.5%) and **CONSOLIDATED BEL-AIR RESOURCES LTD. (CBT-V) (25%)**.

have been expanded to cover most of the eastern portion of the Rock & Roll property and all of the southern half of the Bornagain ground. The ground geophysics traced the Black Dog horizon in a NW-SE direction over at least 1,300 meters, confirming the airborne survey results. Recognition of the volcanogenic nature of the Black Dog mineralization prompted a shift from exploring for a SNIP-type precious metals rich shear zone model to a stratabound massive sulphide model. The other nearby target of a similar nature is the polymetallic massive sulphide deposit at Eskay Creek 30 miles to the east. (SEE GCNL No.23, 1Feb90, P.1 FOR PREVIOUS DATA)

**BETHLEHEM RESOURCES CORP. (BTH-V,T, BTHMF-Nasdaq)**  
**GOLDNEV RESOURCES INC. (GHNZ-V)**

**MINE FUNDING TO CLOSE FEB. 15,1991** - Bethlehem Resources 50% operator and Goldnev Resources 50% have reported Nippon Mining Co.Ltd. and Sumitomo Corporation have agreed to close Feb. 15, 1991, the \$7,000,000 financing for the resumption of production at the 1,100 tonne per day copper zinc Goldstream mine, 80 km north of Revelstoke, B.C. The first funds are expected to be advanced March 1,1991. Concentrate production is to resume by the end of June with the first shipment by the end of August.

Nippon and Sumitomo will have the non-cumulative option to convert \$875,000 of the loan to Bethlehem into shares at 70% of the average share trading price in the 30 days prior to the conversion and a minimum of 37¢ per share. Reserves at Goldstream are 1,860,000 tonnes grading 4.8% copper, 3.06% zinc.

**OSSA RESOURCES INC. (OSA-V)**

**NEGOTIATIONS NEARLY CONCLUDED** - Phil Kueber, CEO, reports Ossa Resources is in advanced negotiations to participate with Samedan Oil Corp., a subsidiary of Oklahoma-based **NOBLE AFFILITES INC. (NBL-NY,etc)** in a joint venture oil prospect in southern California. The companies will immediately buy some 1,400 acres and are negotiating to acquire an additional, 3,000 to 4,000 acres. The partners are also negotiating to farm-in to land currently owned by Chevron Corp.

Ossa has also completed the tie-ins of its gas wells in Halkirk, Alberta. Gas production is expected to be on stream by March raising cash flow from about \$60,000 per month to about \$100,000 per month. (SEE GCNL No.244, 18Dec90, P.3 FOR OTHER PROJECT INFORMATION)

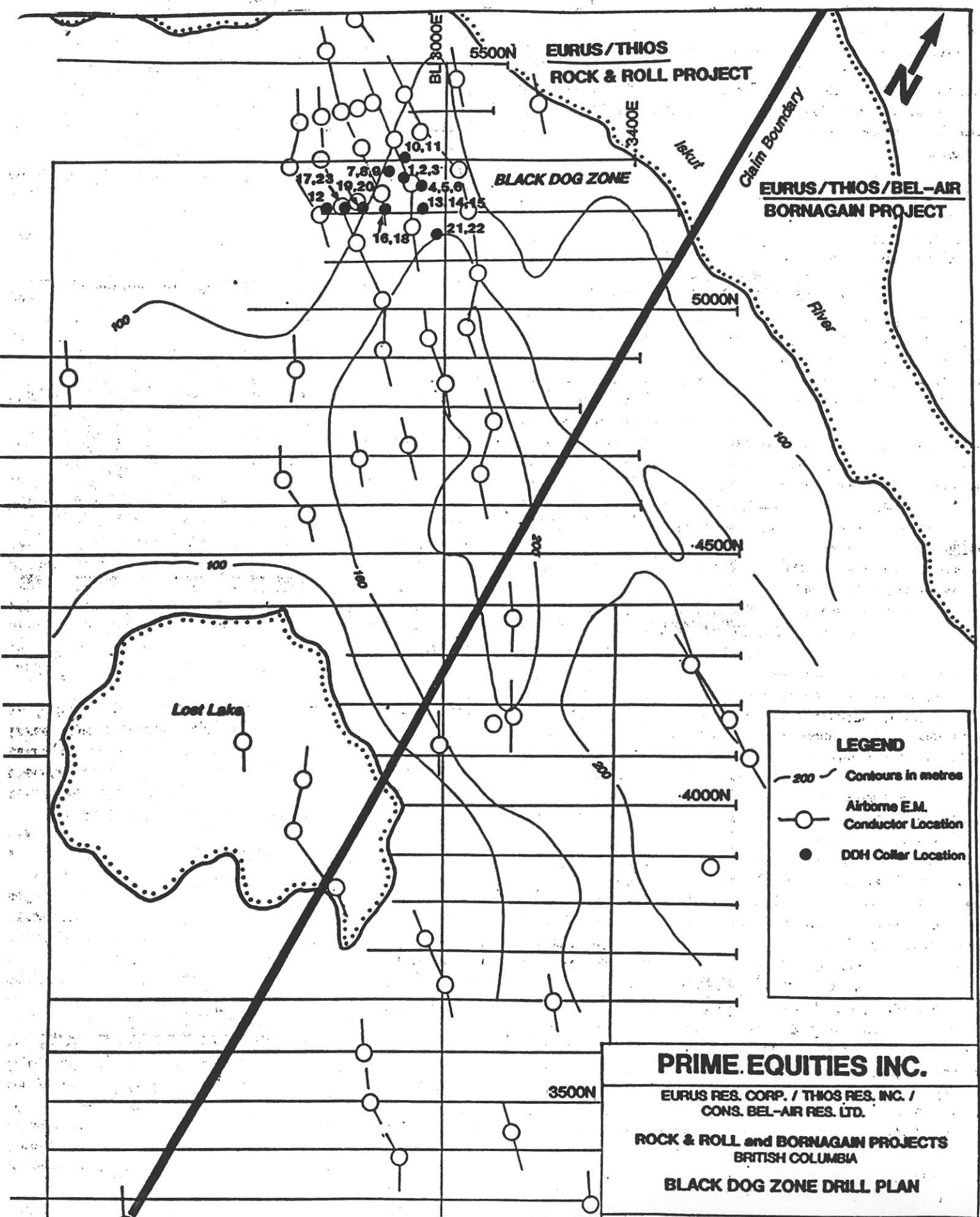
**EL CONDOR RESOURCES LTD. (ECN-V)**  
**ST.PHILIPS RESOURCES INC. (SPP-V)**

HOLE NO.	INTERVAL FEET	LENGTH FEET	GOLD OZ/T	COPPER %	FINAL S.KEMESS DRILL RESULTS
90-16	50 - 312	262	0.032	0.30	David J.
90-19	80 - 413	333	.015	.22	Copeland, pres-
90-21	57 - 348	291	.013	.15	ident, reports
90-22	20 - 341	321	.009	.14	El Condor Res-

ouces Ltd. has received assay results from the final four holes on the South Kemess portion of the Kemess gold/copper porphyry project about 200 miles north of Smithers, B.C. El Condor, operator of the Kemess joint venture (ECN-60%/Kennecott-40%) has an option to acquire an undivided interest in the S. Kemess claims from St.Philips, 75%, and Stork Ventures, 25%, leaving St.Philips and Stork with net interests of 30% and 10% respectively.

The program identified a large porphyry deposit open in all directions. (SEE GCNL No. 22, 25-101, 2-1)

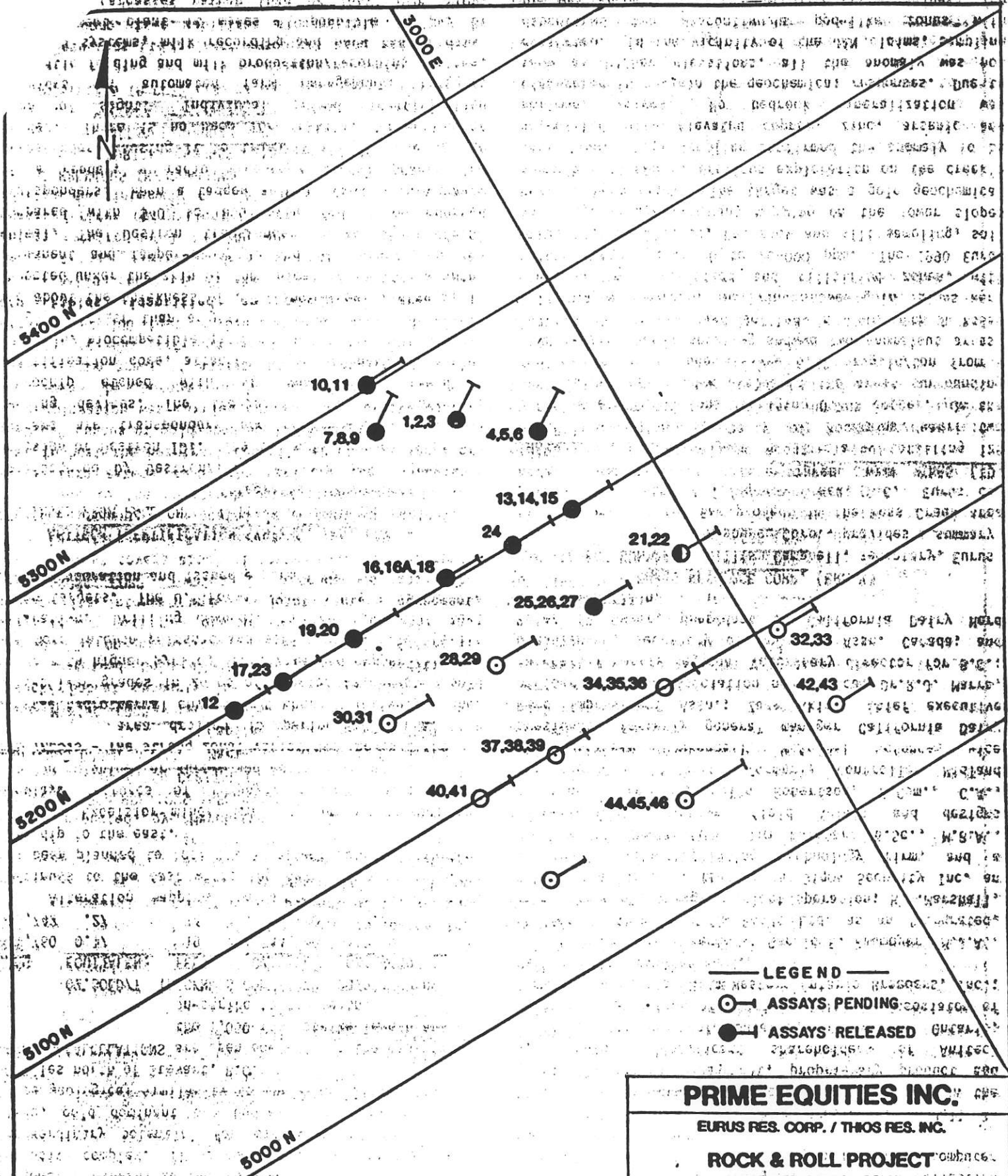




**LEGEND**

- Contours in metres
- Airborne E.M. Conductor Location
- DDH Collar Location

**PRIME EQUITIES INC.**  
 EURUS RES. CORP. / THIOS RES. INC. /  
 CONS. BEL-AIR RES. LTD.  
 ROCK & ROLL and BORNAGAIN PROJECTS  
 BRITISH COLUMBIA  
**BLACK DOG ZONE DRILL PLAN**



**LEGEND**

- — ASSAYS PENDING
- — ASSAYS RELEASED

**PRIME EQUITIES INC.**

EURUS RES. CORP. / THOS RES. INC.

**ROCK & ROLL PROJECT**

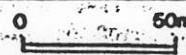
ISKUT RIVER, BRITISH COLUMBIA

Drill Plan

**DRILL PLAN**

(Unsurveyed Collar Locations)

Date: February 18, 1991 Drafted by: E.R.



Scale 1:2,500

NOTE: While we believe this information to have been obtained in accordance with standard industry practices, we make no representation with respect to, nor do we assume any responsibility for the correctness thereof.

PRIME EXPLORATIONS LTD.



## ROCK &amp; ROLL PROJECT - BLACK DOG DRILLING ASSAY RESULTS

HOLE #	SECTION (Metric)	INTERVAL (Feet)	WIDTH (Feet)	GOLD (oz/t)	SILVER (oz/t)	LEAD %	ZINC %	COPPER %
RR91-13	52+00N (-45)	89.9-105.3	15.4	0.057	11.54	0.42	2.21	0.41
		122.6-129.2	6.6	0.028	6.04	0.65	2.39	0.26
RR91-14	52+00N (-90)	62.0-68.2	6.2	0.041	1.73	0.39	1.67	0.05
		153.2-166.3	13.1	0.012	1.70	0.20	0.77	0.22
		166.3-176.1	9.8	0.044	0.57	0.02	0.74	0.42
		219.1-222.4	3.3	0.034	4.91	0.43	2.80	1.00
		255.5-258.8	3.3	0.025	4.20	0.41	2.67	0.66
RR91-15	52+00N (-70)	116.8-126.6	9.8	0.023	4.14	0.17	1.28	0.21
		126.6-134.2	7.6	0.061	15.21	0.88	4.60	1.10
		143.0-148.9	5.9	0.033	10.60	0.79	2.47	0.59
		163.6-170.2	6.6	0.002	0.99	0.20	1.24	0.53
		254.5-257.8	3.3	0.241	0.13	0.01	0.03	0.02
RR91-16	52+00N (-52)	176.8-180.1	3.3	0.018	4.02	0.39	0.99	0.06
		222.7-231.6	8.9	0.020	0.47	0.05	0.45	0.72
RR91-18	52+00N (-71)	157.8-161.1	3.3	0.012	10.50	0.89	3.16	0.39
		210.2-213.5	3.3	0.040	1.30	0.08	1.35	0.58
RR91-19	52+00N (-54)	170.6-180.4	9.8	0.052	9.55	1.52	5.45	0.18
		183.7-187.0	3.3	0.026	4.15	0.75	1.07	0.08
		226.0-232.6	6.6	0.020	1.78	0.15	1.30	0.24
RR91-20	52+00N (-69)	149.9-153.2	3.3	0.001	1.77	0.36	1.17	0.09
		257.8-264.4	6.6	0.010	1.70	0.17	1.50	0.40
RR91-21	51+50N (-45)	63.3-73.1	9.8	0.062	6.67	0.42	1.43	0.65
		76.4-79.7	3.3	0.030	2.94	0.21	0.91	0.57
RR91-22	51+50N [Incomplete]	51.2-54.8	3.6	0.067	38.90	0.68	1.59	0.31
		88.2-91.5	3.3	0.013	1.52	0.26	1.56	0.14
RR91-24	52+00N (-75)	138.1-141.4	3.3	0.032	0.06	0.01	0.01	0.02
		169.6-176.2	6.6	0.014	4.05	0.48	1.47	0.10
		189.3-194.5	5.2	0.012	2.22	0.18	0.86	0.14
		256.2-259.5	3.3	0.001	0.90	0.06	0.45	1.00
RR91-25	51+50N (-45)	204.6-211.2	6.6	0.020	1.22	0.10	0.56	0.33
RR91-26	51+50N (-90)	174.8-178.1	3.3	0.018	7.60	0.67	2.19	0.40
		181.4-184.7	3.3	0.008	1.64	0.23	0.99	0.18
		190.6-198.1	7.5	0.010	1.77	0.25	0.85	0.10
		228.9-238.7	9.8	0.459	0.65	0.02	1.26	1.68
		346.0-350.6	4.6	0.007	1.23	0.11	0.55	1.56
RR91-27	51+50N (-69)	193.2-199.4	6.2	0.031	2.34	0.37	1.51	0.48
		207.3-223.7	16.4	0.005	0.47	0.05	0.36	0.41

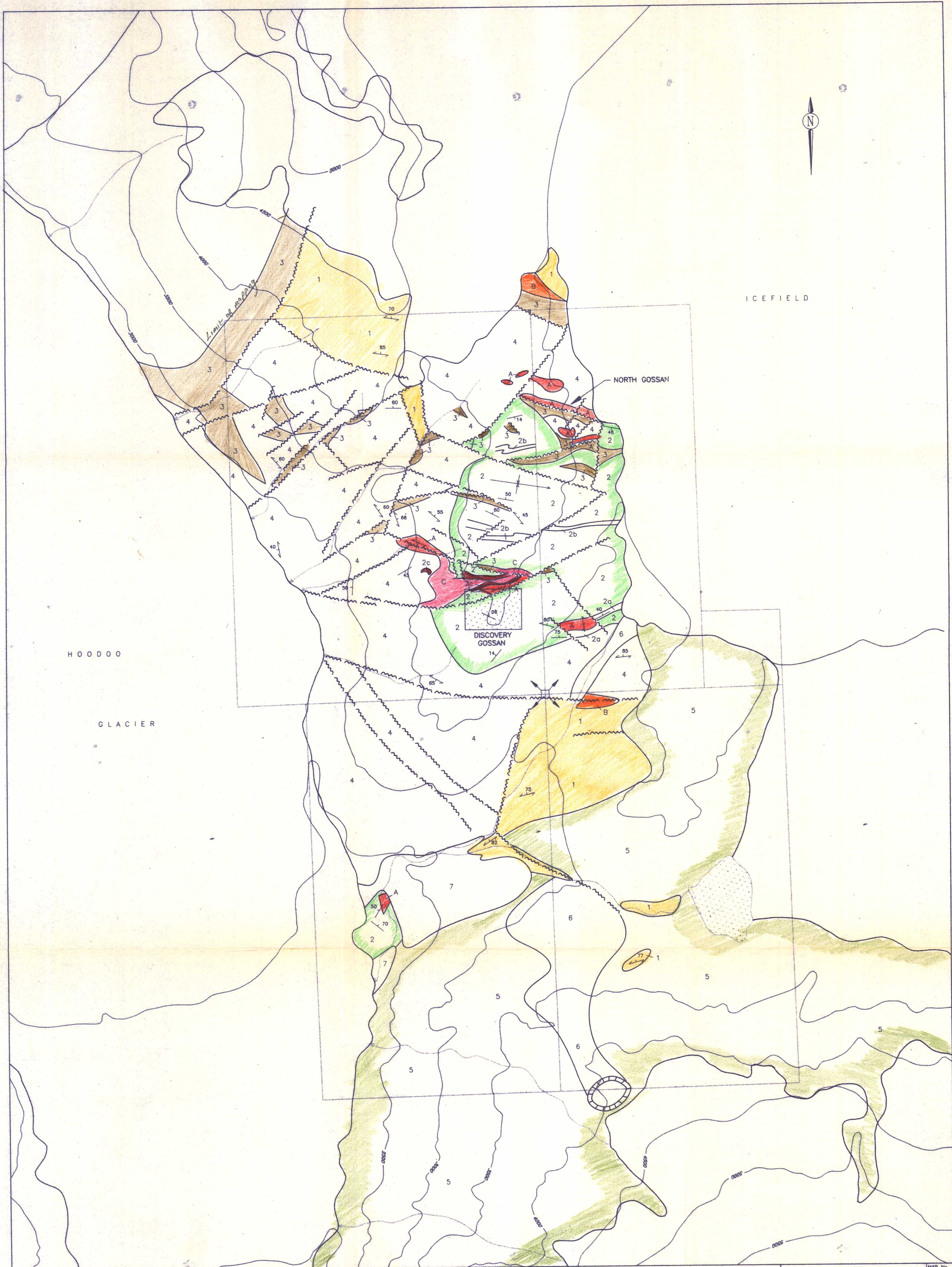
**KURUS RESOURCE CORP.**

**THIOS RESOURCES INC.**

<b>HOLE #</b>	<b>SECTION (Metric)</b>	<b>INTERVAL (Feet)</b>	<b>WIDTH (Feet)</b>	<b>GOLD (oz/t)</b>	<b>SILVER (oz/t)</b>	<b>LEAD %</b>	<b>ZINC %</b>	<b>COPPER %</b>
RR91-22*	51+50N (-45)	51.2- 54.8	3.6*	0.067	38.90	0.68	1.59	0.31
		88.2- 91.5	3.3*	0.013	1.52	0.26	1.56	0.14
		132.8-139.7	6.9	0.061	0.71	0.12	0.63	0.17
		149.6-152.9	3.3	0.034	4.36	0.35	1.79	0.22
RR91-28	51+50N (-70)	82.3- 85.6	3.3	0.046	0.17	0.08	0.11	0.05
		228.0-234.9	6.9	0.018	1.29	0.08	0.55	0.09
RR91-29	51+50N (-90)	188.0-197.8	9.8	0.001	2.69	0.37	0.96	0.10
RR91-30	51+50N (-70)	216.8-223.4	6.6	0.120	0.10	0.01	0.03	0.02
RR91-32	51+00N (-45)	65.9- 79.0	13.1	0.018	1.50	0.12	0.64	0.20
		79.0- 85.6	6.6	0.029	5.91	0.49	1.84	0.37
RR91-33	51+00N (-90)	73.4- 76.7	3.3	0.027	2.56	0.26	0.82	0.07
		127.6-139.7	12.1	0.015	2.00	0.21	0.75	0.18
RR91-34	51+00N (-50)	146.0-148.3	2.3	0.320	47.60	1.76	3.19	0.59
		162.4-172.2	9.8	0.051	12.17	0.77	5.20	0.85
		218.1-221.4	3.3	0.029	2.40	0.41	1.55	0.19
RR91-35	51+00N (-90)	184.4-194.2	9.8	0.033	5.79	0.30	1.93	0.44
		230.9-240.7	9.8	0.015	1.35	0.13	0.90	0.31
RR91-36	51+00N (-72)	166.6-169.9	3.3	0.011	2.98	0.20	0.94	0.12
		169.9-189.6	19.7	0.080	20.05	2.16	6.41	1.08
		189.6-194.2	4.6	0.037	2.71	0.11	1.44	0.58
RR91-37	51+00N (-55)	219.4-252.2	32.8	0.093	11.56	1.09	5.07	1.09
		252.2-258.8	6.6	0.020	1.06	0.07	0.45	0.30
RR91-39	51+00N (-90)	220.1-230.3	10.2	0.003	1.62	0.33	0.96	0.09
		365.4-368.7	3.3	0.020	0.18	0.01	0.18	0.05
RR91-42	50+50N (-45)	45.2- 51.8	6.6	0.011	2.54	0.24	0.84	0.20
RR91-43	50+50N (-90)	67.9- 76.8	8.9	0.078	4.88	0.35	1.18	0.28
		79.1-102.0	23.0	0.013	1.92	0.24	1.21	0.27
		115.1-134.8	19.7	0.001	0.67	0.26	1.41	0.23

\*This portion of drill hole RR91-22 was previously released.





**RECENT PLOCENE & YOUNGER**

- 7 Glacial Outwash, Sand, Gravel
- 6 HOODOO VOLCANICS - AH-AH Flow, Yellow Olivine Basalt
- 5 HOODOO VOLCANICS - (Undifferentiated) Columnar Basalts, Coarse Trachyte Feldspar Porphyry, Debris Flows, Ash, Obsidian & Scoria

**UPPER TRIASSIC**

- 4 Undifferentiated Volcanic & Sedimentary Rocks (Units 1 to 3 Inclusive)
- 3 Argillite, Meta-Argillite, Minor Sandstone & Greywacke
- 2 Tuffs, Greywacke, Volcanic Sandstone, Grits, Chert, Minor Andesite Flows & Breccias
- 2a Chert Pebble/Boulder Conglomerate
- 2b Thin Bedded, Sharp Banded Tuffs, Volcanic Sandstone
- Thin Bedded Chert

- 1 Phyllites, Chlorite & Hematite Schists, Quartz Muscovite Schists, Greenstones, Minor Argillaceous Schists
- A Silicified & Pyritized Zones of Mineralization
- B Zones of Intense Quartz Carbonate Alteration
- C Intrusive Gabbro (Age Unknown)

MAP No.

**MINNOVA Inc.**

**HOODOO CLAIM GROUP**

**GEOLOGY**

DATE : MAY 1991	FILE : HODOO.DWG
DRAWN BY : AF/sg	FIG. 5
REVISED : after Holtek	SCALE : 1 : 12500
Sept 1993	0 200 400m

