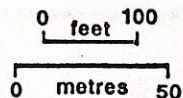
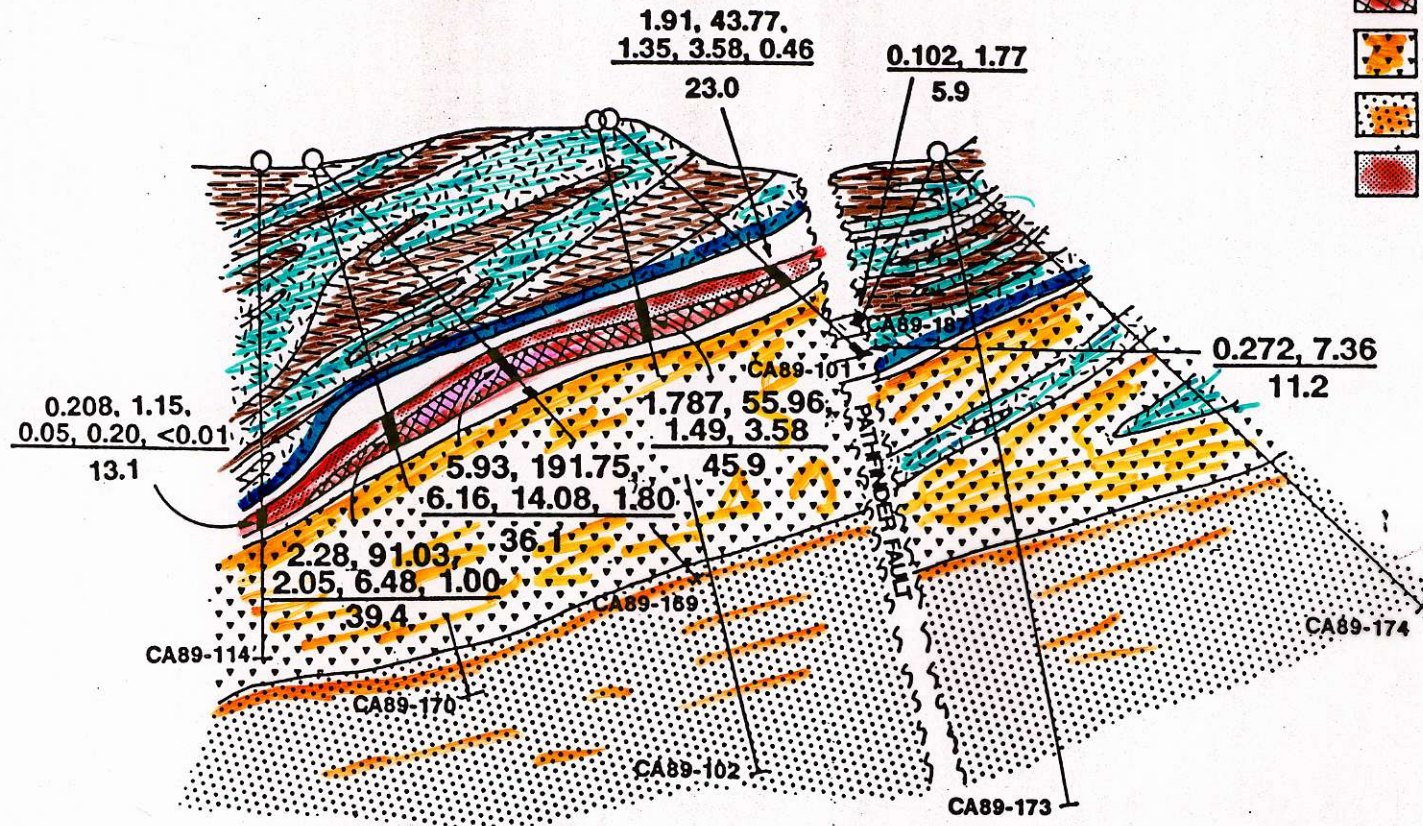


# SECTION 5+50N

## LEGEND

-  Hangingwall Andesite
-  Argillite (minor Andesite)
-  Contact Argillite
-  Massive Sulphides
-  Rhyolite Breccia
-  Dacite
-  >0.1 oz/t Au

Au, Ag (oz/t)  
Pb, Zn, Cu (%)  
feet



**PRIME EXPLORATIONS LTD.**

CALPINE RESOURCES INC. / STIKINE RESOURCES LTD.

**ESKAY CREEK PROJECT**

825779

Eskay  
Creek  
Project

Disc - soil geoch  
surface drillij

# STRATIGRAPHIC COLUMN - 21 ZONE

## ESKAY CREEK PROJECT

VERTICAL SCALE 1 : 1000

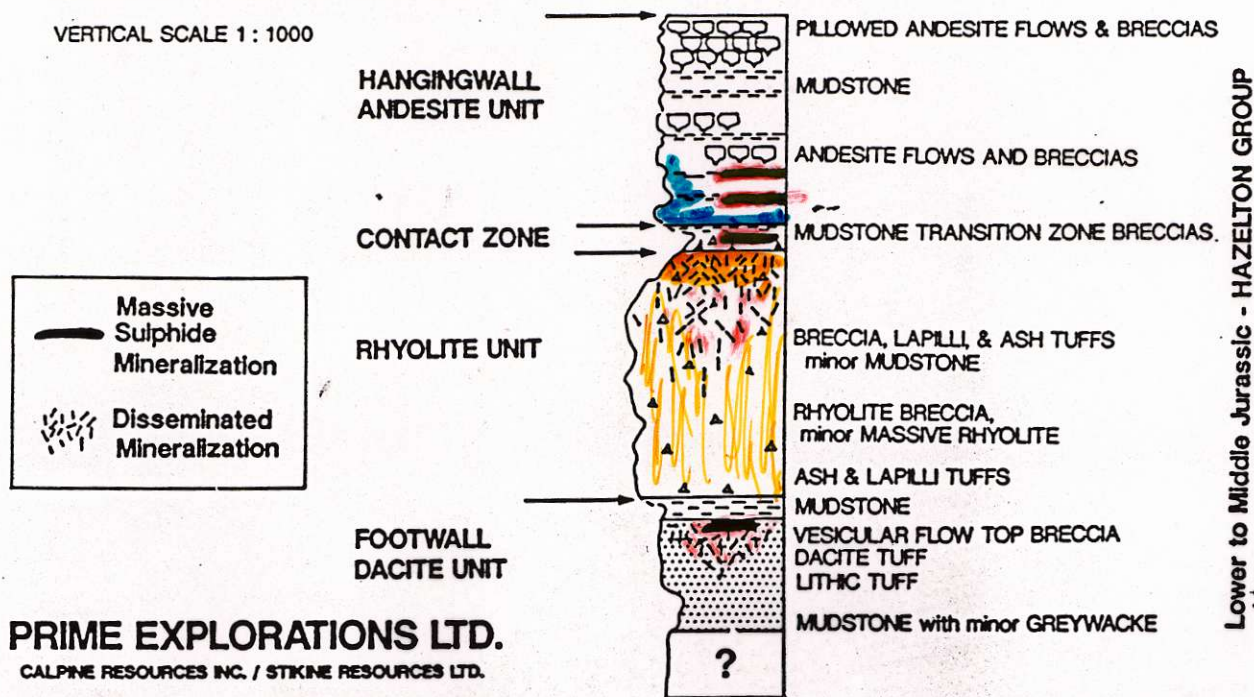


Figure 1.

of highly altered vitrophyre (or perhaps hyaloclastite) are present, often displaying perlitic or lithophysal textures. These rocks may appear massive to schistose and are mineralogically simple: quartz, muscovite and chlorite. Alteration effects are most dramatic within the matrix, however, clasts are also strongly altered. The base of the rhyolite is frequently massive, aphanitic and weakly brecciated.

Footwall to the rhyolite is an unknown thickness of fossiliferous mudstone, wacke and dacite tuff. Epiclastic units are medium to thick bedded, medium laminated, tuffaceous

The 21A Deposit (previously known as the "South Zone") is hosted within Contact Unit carbonaceous mudstone and breccia, as well as the underlying Rhyolite breccia. Two styles of mineralization are present. The first is dominated by a visually striking assemblage of disseminated to near-massive stibnite and realgar within the Contact Unit. The second style occurs in the adjacent footwall rhyolite, and features a stockwork-style quartz-muscovite-chlorite breccia mineralized with disseminated sphalerite, tetrahedrite and pyrite. Highest gold and silver grades and widths are encountered where the Contact Unit is thickest and the immediately underlying rhyolite breccia is highly fractured and altered. The 21A area has outlined a mineralized zone

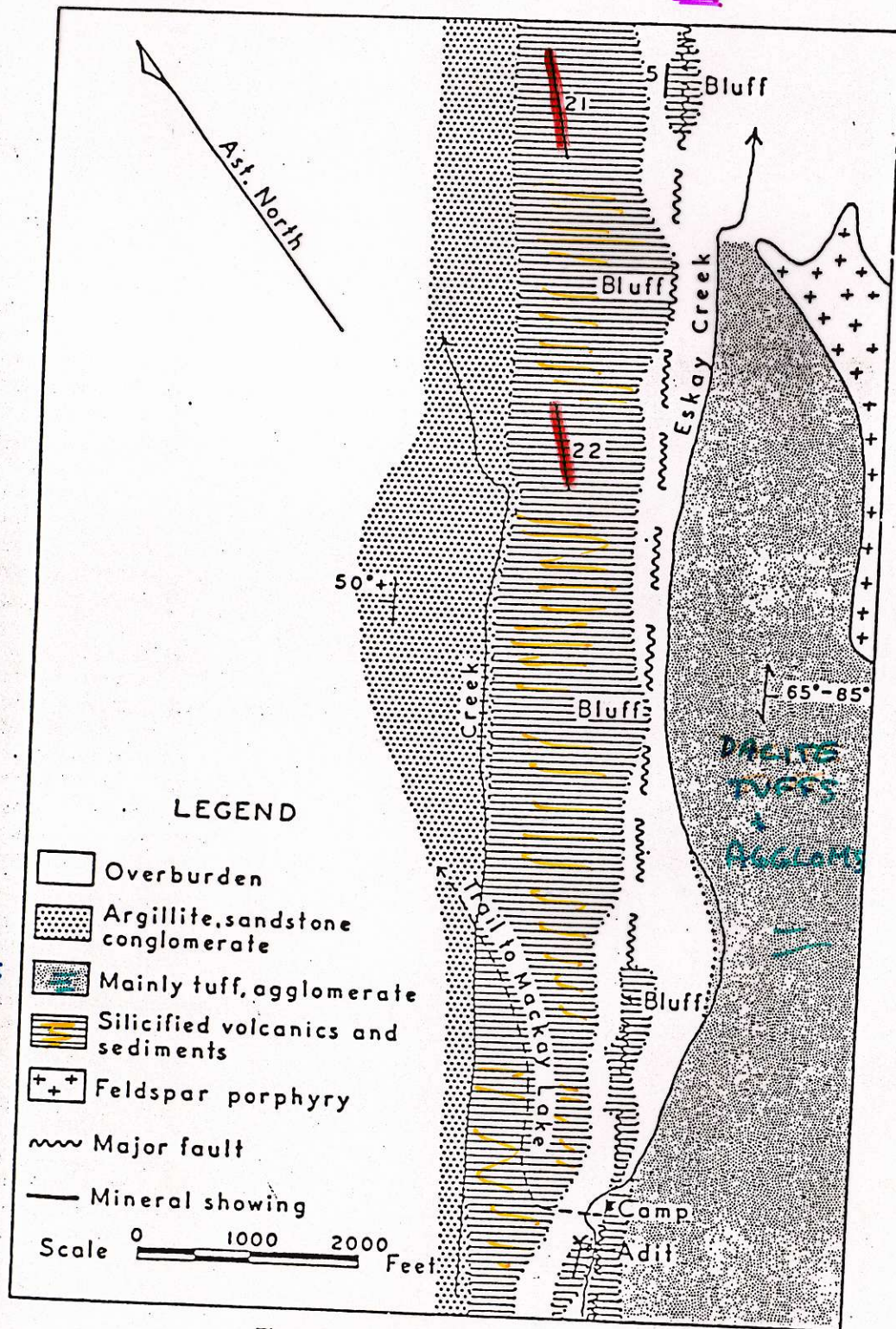
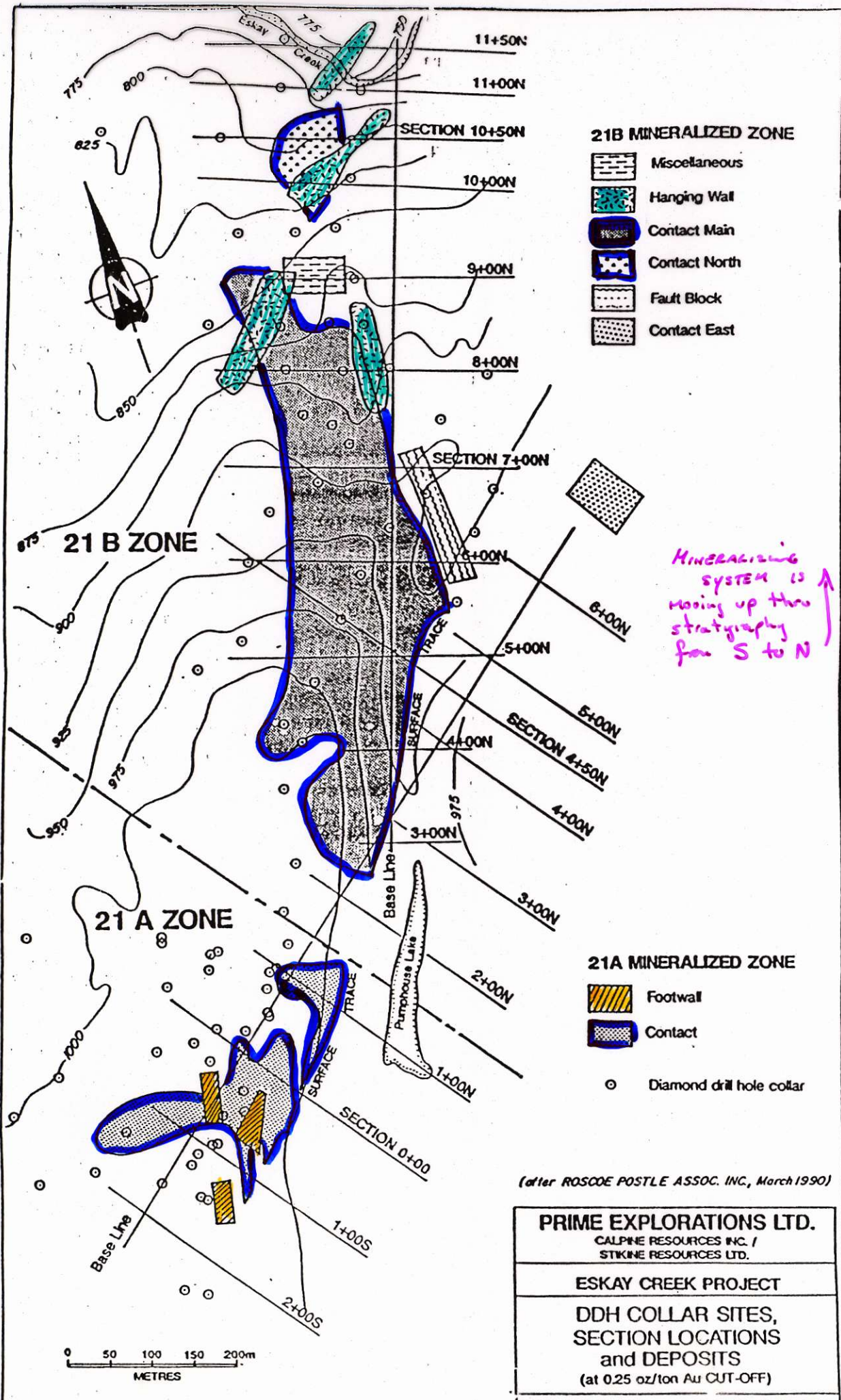
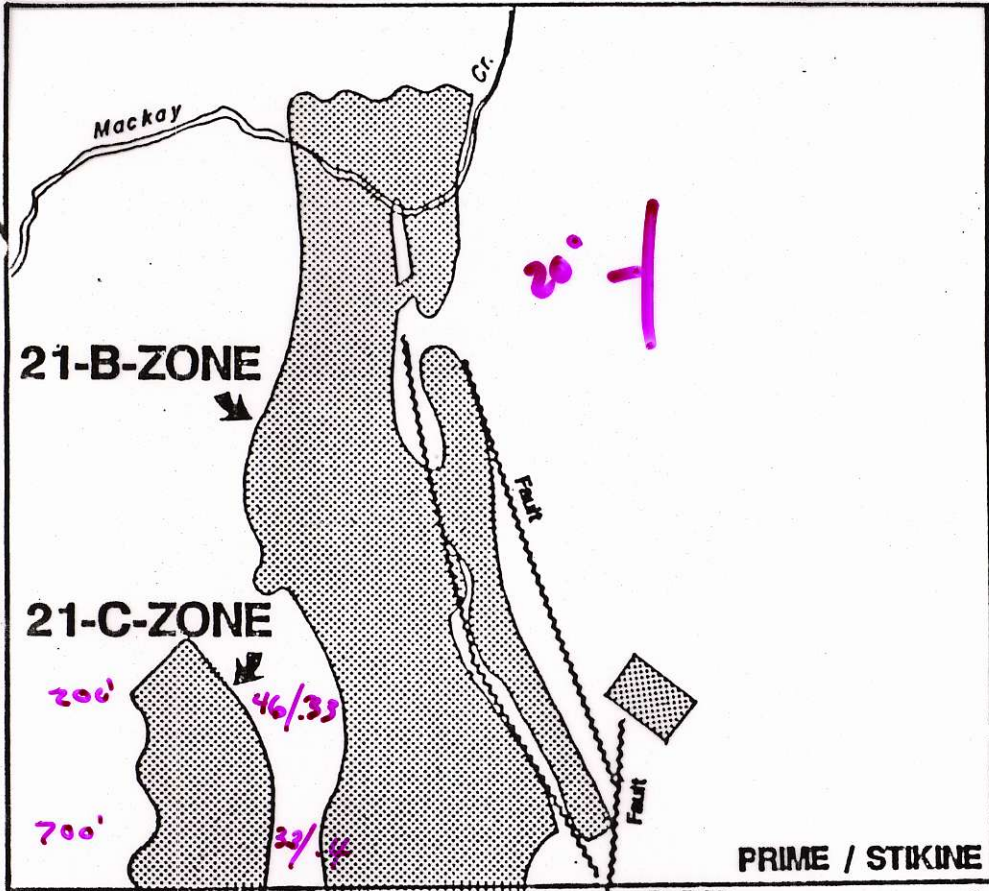


Figure 4. Geology of Mackay group.



ADRIAN RESOURCES LTD.

Claim Boundary (Approx.)

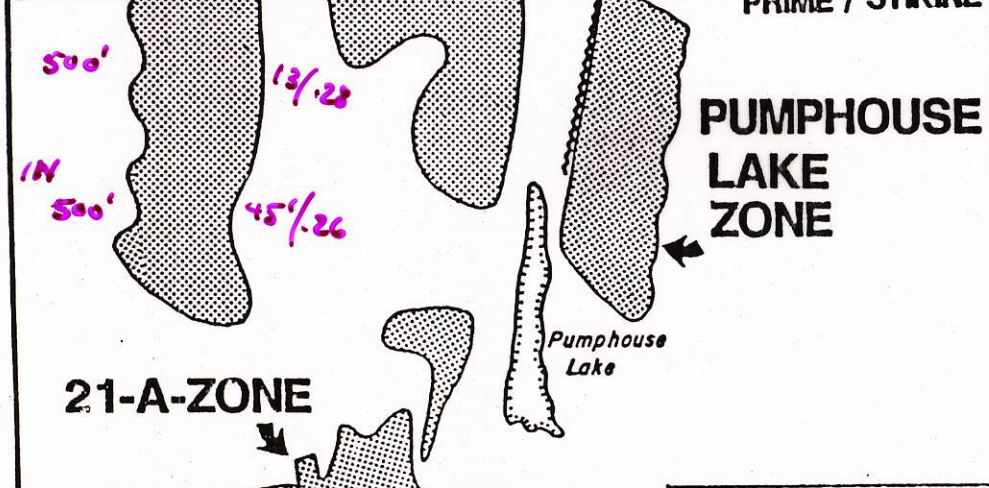


EURUS  
RESOURCE  
CORP.

PRIME / STIKINE

TOK CLAIM GAP

PRIME / STIKINE



500 holes  
1300 x 500

PRIME EXPLORATIONS LTD.  
PRIME RES. GROUP / STIKINE RES. LTD.  
ESKAY CREEK PROJECT

## PLAN MAP OF MINERALIZED ZONES

Date: May 11, 1990

Drafted by: E. Rogan



**NOTE:**

While we believe this information to have been obtained in accordance with standard industry practices, we make no representation with respect to, nor do we assume any responsibility for the correctness thereof.

date has been from the Sixteen and Discovery veins. In August, reserves were 50,000

beds". BGS mapping correlates these strata with the Betty Creek and Mount

primary test from the region was about 85%.

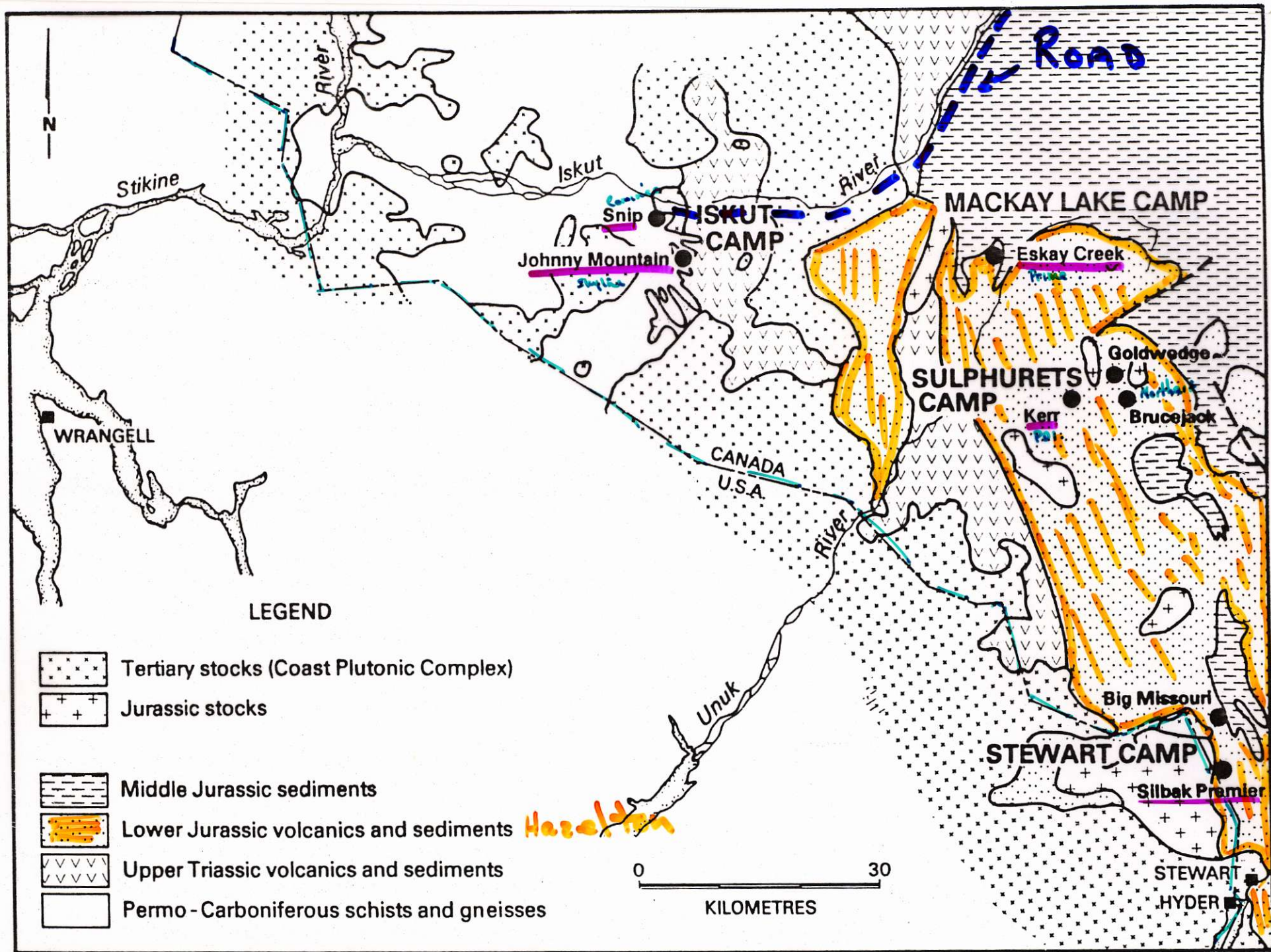


Figure 1 Generalized geological setting of the Stewart and Iskut areas showing the major deposits.