

SUSAP PROPERTY  
OSOYODS MINING DISTRICT

The Susap Property is located on the west side of the Similkameen Valley approximately 8 miles from the U.S. border. Access is by dirt road 3 miles from the southern trans canada highway. The property consists of 24 units, most of which are crown reverted claims staked in 1897. The majority of the exploration was conducted in 1973 and 1979 by Canadian Occidental Petroleum and United Hearne Mines respectively. The work completed to date is as follows:

- detailed geochemical survey
- magnetometer survey
- I.P. survey
- 10 diamond drill holes
- trenching
- 2 adits

The geology consists of a contact between porphyritic quartz monzonite batholith intruding a sequence of deformed and metamorphosed mafic volcanics. Along the contact zone hybrid igneous intrusives occur forming a sequence of diorite to late micro quartz monzonites. The mineralization appears to follow the intrusive-volcanics contact, cutting all rocks as a north easterly trending zone.

The geochemical anomaly zone is approximately 1500 ft. wide and is continuous throughout the claims. Surface mineralized exposures within this geochemical anomaly have been distributed over 11,000 ft. in length and 800 ft. in width. The mineralization, occurring as vein or fracture coatings,

consists primarily of chalcopyrite, pyrite and molybdenite. Refer to the generalized geology plan map or cross section for the geometry of the mineralization. The grade of the mineralized zone is not exactly known, however numerous channel samples from surface and adit exposures have been taken, as summarized in table 1. There are also numerous assays reported from drill holes in the main showing area. The drill core is no longer available and the drill logs do not properly report the core recovery, therefore I do not place much reliability on the actual values, rather it is more of a guide to confirm the mineralization at depth. Copper and moly were assayed throughout, while gold has only been assayed in the main showing trench and upper adit. The amount of gold present is crucial to determining the economic value for the mineralized zones.

I feel that the existing data base shows that there are definite indications of economic grade concentrations of copper moly and gold mineralization on the property. This grade could be of two types; a large tonnage low grade deposit or small tonnage high grade deposit.

All the previous work has been concentrated in the main showing area, except the regional geochem and mag surveys. The rest of the geochemical anomaly has to be geologically mapped to provide more information on geological structure control and ore grade. Once the mineralized zone has been accurately defined on surface, drilling will then be required to outline the structure at depth.

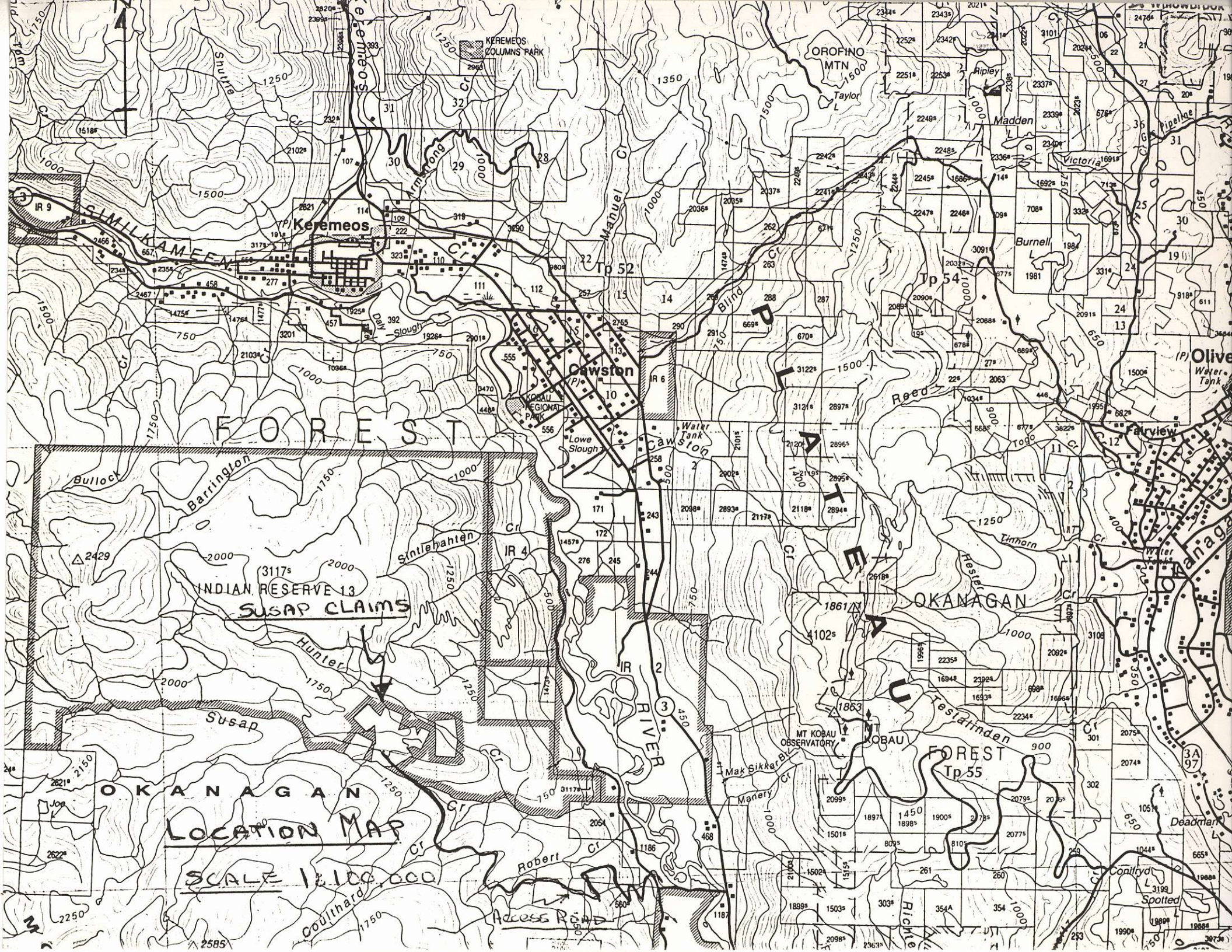
I am approaching your company in hopes of providing the required logistical and financial input required to develop this property. In doing so, I am willing to enter into an option agreement and am open to all offers. My resources are very tight and I am only able to undertake a limited prospecting program by myself. Should you be interested in the property I would appreciate hearing from you. I am excited about this property and hope that you are as well.

Lyle Little

Geologist

TABLE 1  
SUSAP PROPERTY  
SURFACE AND ADIT ASSAY RESULTS

AREA	COMPANY	YEAR	TYPE	WIDTH FT.	CU %	MOS 2 %	AU OZ/TON
UPPER ADIT	FRIDAY MINES	1963	CHANNEL	5.00	1.8000	0.4500	0.2500
UPPER ADIT	FRIDAY MINES	1963	CHANNEL	5.00	0.4000	0.3400	0.3500
UPPER ADIT	FRIDAY MINES	1963	CHANNEL	5.00	0.5000	0.0800	0.0500
UPPER ADIT	FRIDAY MINES	1963	CHANNEL	5.00	2.8200	0.1800	0.0200
UPPER ADIT	FRIDAY MINES	1963	CHANNEL	5.00	1.8500	0.0800	0.0050
UPPER ADIT	FRIDAY MINES	1963	CHANNEL	5.00	1.1000	0.1100	0.0150
UPPER ADIT	FRIDAY MINES	1963	CHANNEL	5.00	1.6500	0.3500	0.0050
UPPER ADIT	FRIDAY MINES	1963	CHANNEL	5.00	1.8500	0.3600	0.0050
HUNTER CREEK ADIT	FRIDAY MINES	1963	CHANNEL	3.50	1.2200	0.3100	0.0100
HUNTER CREEK ADIT	FRIDAY MINES	1963	CHANNEL	3.00	1.6500	2.2100	0.0100
HUNTER CREEK ADIT	FRIDAY MINES	1963	CHANNEL	4.00	0.9700	0.2700	0.0100
LOWER ADIT	UNITED HEARNE	1979	CHANNEL	33.00	0.3400	0.2250	
LOWER ADIT	UNITED HEARNE	1979	CHANNEL	16.00	0.4250	0.0210	
UPPER ADIT	CAN. OXY.	1973	CHANNEL	25.00	0.4400	0.2100	
UPPER ADIT	CAN. OXY.	1973	CHANNEL	25.00	0.2430	0.0330	
LOWER ADIT	CAN. OXY.	1973	CHANNEL	85.00	0.2150	0.1450	
SR-2 AREA	CAN. OXY.	1973	CHANNEL		0.2300		
SR-2 AREA	CAN. OXY.	1973	CHANNEL		0.3800		
MAIN SHOWING	L LITTLE	1988	CHANNEL	10.00	0.5769	0.0256	
UPPER ADIT	L LITTLE	1988	CHANNEL	3.50	0.8800	0.2034	0.0670
UPPER ADIT	L LITTLE	1988	CHANNEL	3.00	1.9100	0.1526	0.0360
MAIN SHOWING	L LITTLE	1988	CHANNEL	10.00	0.8550	0.2185	0.0180
MAIN SHOWING	L LITTLE	1988	CHANNEL	4.00	1.4600	0.1350	0.0220



FOREST

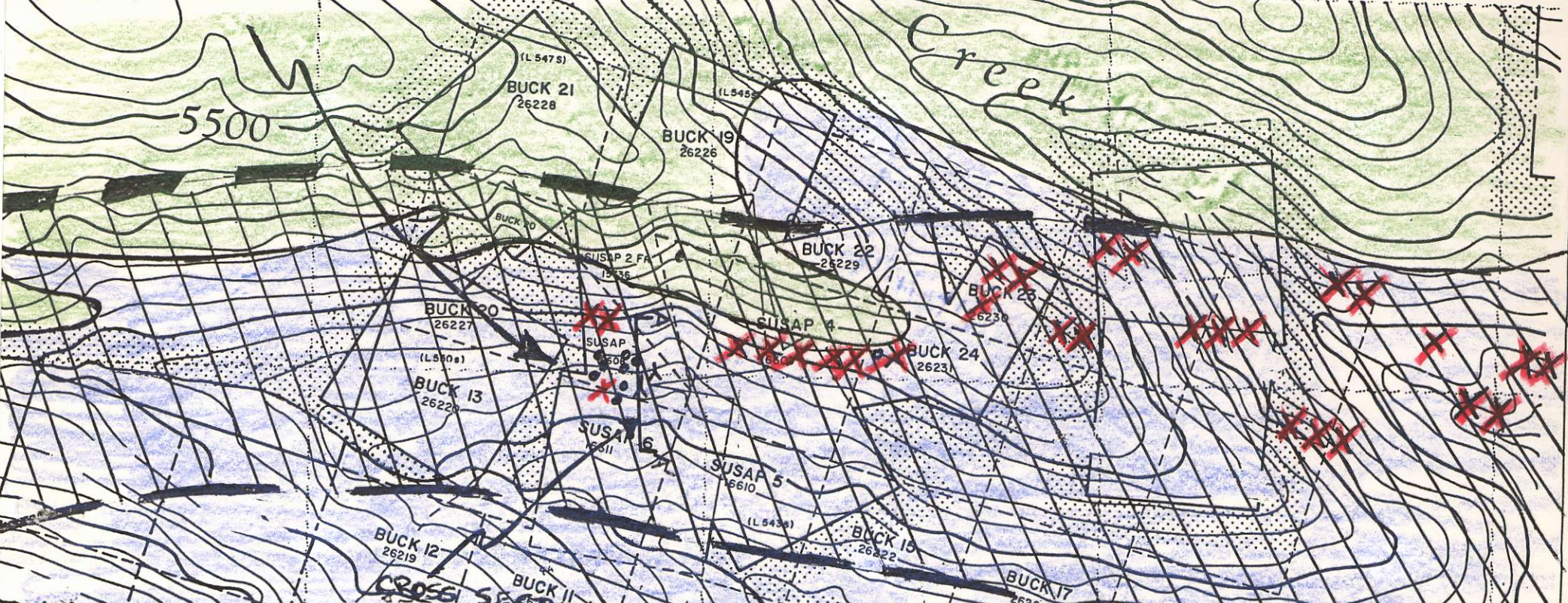
INDIAN RESERVE 13  
SUSAP CLAIMS

LOCATION MAP

SCALE 1:100,000

ACCESS ROAD

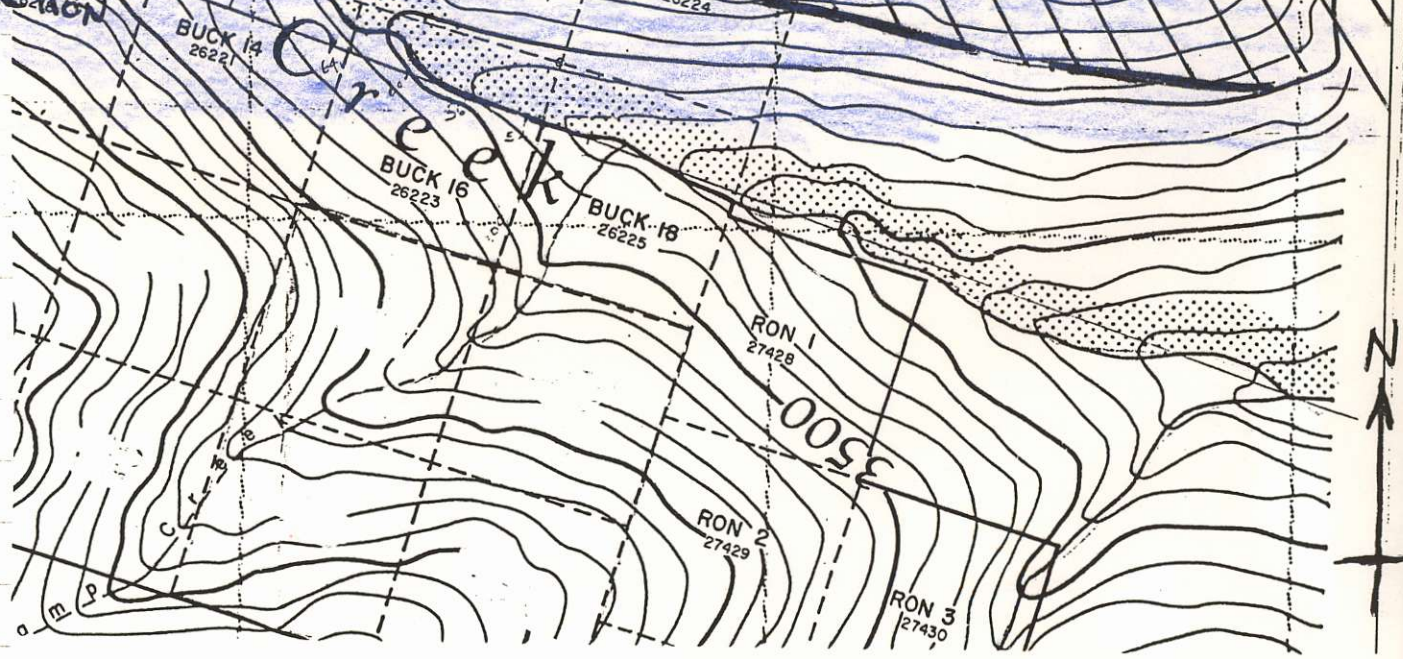
1" MAIN SHOWING

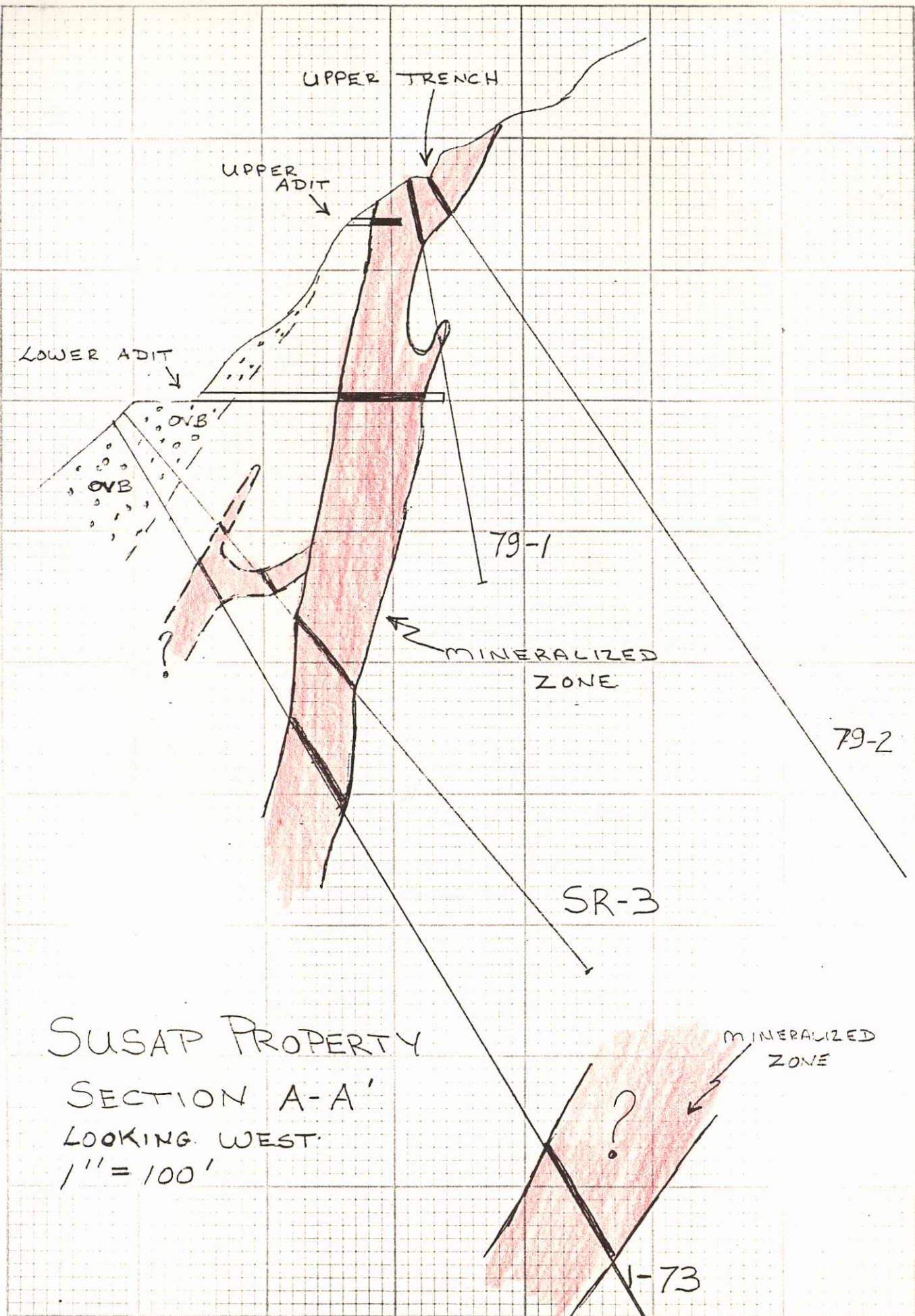


# SUSAP PROPERTY GEOLOGY MAP (GENERALIZED)

1:15000 APPROX

- OLD TOM VOLCANICS
- GRANDIORITE BATHOLITH
- GEOCHEM ANOMALIE
- X KNOWN MINERAL OUTCROP.
- DRILL SITE.
- Y ADIT





SUSAP PROPERTY  
 SECTION A-A'  
 LOOKING WEST.  
 1" = 100'