



"Rite in the Rain"
ALL-WEATHER
Metric Field Book
No. 360

825640
Rainbow-
Tam
O'Shanter

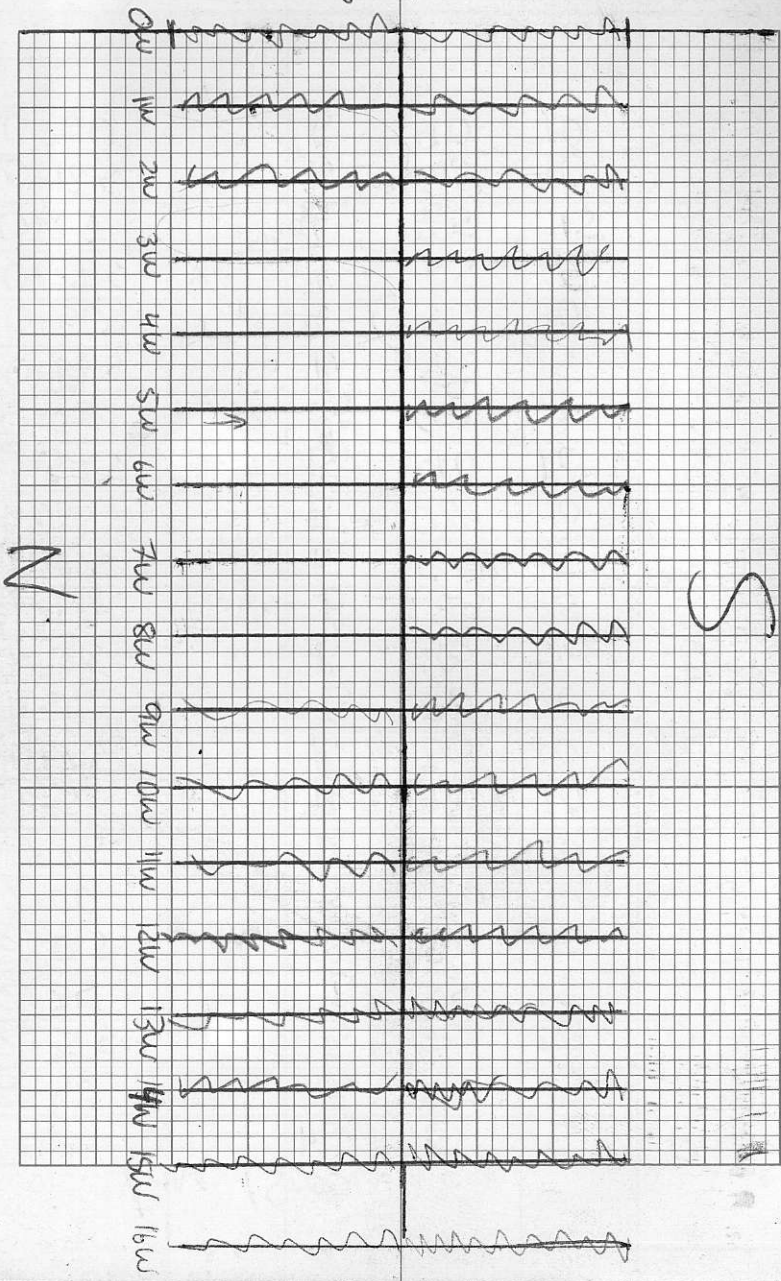
MIKE LORIMER

DEADWOOD '92 SOILS

Sept 20/92

	hor	C	S	P
Line 16W	B	100		
0+00 B/L				
0+12.5 N	B	95	5	
0+25 N	B	95	5	
0+37.5 N	B	100		
0+50 N	B	90	5	5
0+62.5 N	B	90	5	5
0+75 N	B	100		
0+87.5 N	B	95	5	
1+00 N	B	95	5	
1+12.5 old trench	B	80	10S	10
1+25	B	90	10P	
1+37.5	N/S	trenches		
1+50	B	70	15	15
1+62.5	B	90	10P	
1+75	B	90	10	
1+87.5	B	70	15	15
2+00	B	90	10P	
2+12.5	B	90	10C	
2+25	B	85	15S	
2+37.5	B	90	10P	
2+50	B	85	15	

@ 310°
Dec 22°



Line 15+00W

	hor	C	S	P
2+50	B	85	15	
2+37.5	B	70	20	10
2+25	B	85	15	
2+12.5	B	90	10	
2+00	B	90	10	
1+87.5	B	90	10	
1+75	B	90	10	
1+62.5	B	80	10	10
1+50	B	90	10	
1+37.5	B	70	20	10
1+25	B	85	15	
1+12.5	B	85	15	
1+00	B	90	10	
0+87.5	B	90	10	
0+75	B	90	10	
0+62.5	B	85	15	
0+50	B	90	10	
0+37.5	B	85	15	
0+25	B	85	15	
0+12.5	B	90	10	
0+00	B	90	10	

Line	17+00W	hor	C	Sept 5	21/92 P
0+00N		N/S			
0+12.5 N		N/S			
0+25 N			90		10
0+37.5 N		N/S	90	10	
0+50 N					
0+62.5 N		B	85	5	10
0+75		B	90	10	
0+87.5		B	90	5	5
1+00		B	90	10	
1+12.5		B	90	10	
1+25		B	85	10	5
1+37.5		B	85	5	10
1+50		B	90	10	
1+62.5		B	85	5	10
1+75		B	85		15
1+87.5		B	90		10
2+00		B	90		10
2+12.5		B	90	5	5
2+25		B	85	10	5
2+37.5		B	85	10	5
2+50		B	90	10	

Line 16+00W

	hor	C	S	P
0+12.5	B	90	10	
0+25	B	90	10	
0+37.5	B	95	5	
0+50	B	95	5	
0+62.5	B	90		10
0+75	B	90	5	5
0+87.5	B	85	5	10
1+00	B	85		15
1+12.5	B	90	10	
1+25	B	85	10	5
1+37.5	B	80	5	15
1+50	B	90	10	
1+62.5	B	90	10	
1+75	B	90	10	
1+87.5	B	90	5	5
2+00	B	90		10
2+12.5	B	90	10	
2+25	B	85	5	10
2+37.5	B	80	—	20
2+50	B	85	—	15

Line	15+00w	hor	C	S	P
2+50S		B	70	20	10
2+37.5S		B	80	10	10
2+25S		B	85	15	
2+12.5S		B	90	10	
2+00S		B	85	10	5
1+87.5S		B	85	15	
1+75		B	85	10	5
1+62.5		B	85	15	
1+50		B	90	10	
1+37.5		B	70	20	10
1+25		B	70	20	10
1+12.5		B	80	10	10
1+00		B	90	10	
0+87.5		B	85	10	5
0+75		B	90	10	
0+62.5		B	85	5	10
0+50		B	85	5	10
0+37.5		B	90	10	
0+25		B	90	10	
0+12.5		B	85	15	

Line 14+00 W

	hor	C	S	P
0+00 B/L	B	95	5	
0+12.55	B	85	5	10
0+25.5	B	90	10	
0+37.55	B	90	10	
0+50.5	B	90	10	
0+62.5	B	85	5	10
0+ 75	B	95	5	
0+87.5	B	90	10	
1+00	B	95	5	
1+12.5	B	90		10
1+25	B	90	10	10
1+37.5	B	90	5	5
1+50	B	85	10	5
1+62.5	B	90	10	
1+75	B	90	10	
1+87.5	B	85	10	5
2+00	B	90	10	
2+12.5	B	90	5	5
2+25	B	80	10	10
2+37.3	B	80	10	10
2+50	B	80	10	10

Line B+00W

	hor	C	S	P
2+50 S	B	90	10	
2+37.5 S	B	90	5	5
2+25 S	B	95	5	
2+12.5 S	B	90	10	
2+00 S	B	80	15	5
1+87.5	B	85	15	
1+75	B	80	10	10
1+62.5	B	90	10	
1+50	B	90	10	
1+37.5	B	80	10	10
1+25	B	85	10	5
1+12.5	B	90	10	
1+00	B	90	10	
0+87.5	B	70	20	10
0+75	B	80	15	5
0+62.5	B	90	10	
0+50	B	85	15	
0+37.5	B	85	5	10
0+25	B	90	10	
0+12.5	B	85	10	5
0+00 B/L	B	90	—	10

tie in

L13W
1+00S

5m @ 200° from
L400N
100E

Sept 22/92

Line 1+00N

8+00E to
due north

L 6W
1+94N

75m

5+00E +
due north

L 8W
0+56S

17m

3+00E
due north

L 10 W
1+50S

78m

Line 12+00W

	hor	C	S	P
0+00BL	B	80	15	5
0+12.55	B	90	5	5
0+255	B	80	5	15
0+37.55	B	90	10	
0+505	B	90	10	
0+62.5	B	90	10	
0+75	B	85	10	5
0+87.5	B	80	5	15
1+00	B	95	5	
1+12.5	B	95	5	
1+25	B	90	10	
1+37.5	B	90	10	
1+50	B	80	10	10
1+62.5	B	80	10	10
1+75	B	85	15	
1+87.5	B	90	10	
2+00	B	95	5	
2+12.5	B	90	10	
2+25	B	95	5	
2+37.5	B	90	10	
2+50				

Line 11400W

	hor	C	S	P
2+50S	B	85	15	
2+37.5S	B	90	10	
2+25S	B	90	10	
2+12.5S	B	85	10	5
2+00S	B	90	10	
1+87.5	B	85	10	5
1+75	B	90	10	
1+62.5	B	90	10	
1+50	B	85	5	10
1+37.5	B	80	10	10
1+25	B	90	10	
1+12.5	B	95	5	
1+00	B	80	10	10
0+87.5	B	90	10	
0+75	B	90	10	
0+62.5	B	90	10	
0+50	B	80	10	10
0+37.5	B	80	10	10
0+25	B	85	5	10
0+12.5	B	80	10	10
0+00 B/L	B	80	10	10

Line 10+00W

	nos	C	S	10
0+00B/L	B	90	10	
0+12.5S	B	80	10	10
0+25S	B	80	10	10
0+37.5S	B	90	10	
0+50S	B	90	10	
0+62.5S	B	90	10	
0+75	B	85	10	5
0+87.5	B	85	15	
1+00	B	90	10	
1+12.5	B	85	15	
1+25	B	90	10	
1+37.5	B	85	15	
1+50	B	90	10	
1+62.5	B	90	10	
1+75	B	80	10	10
1+87.5	B	90	10	
2+00	B	80	10	10
2+12.5	B	90	10	
2+25	B	80	10	10
2+37.5	B	80	15	5
2+50	B	80	10	10

Line 9+00W

	hor	C	S	P
2+50 S	A-B	80	10	10
2+37.5 S	B	85	15	
2+25 S	B	80	10	10
2+12.5 S	B	70	15	15
2+00 S	B	80	20	
1+87.5 S	B	85	15	
1+75 S	B	90	10	
1+50 S	B	80	10	10
1+37.5 S	B	90	10	
1+25 S	B	90	10	
1+12.5 S	B	80	20	
1+00 S	B	80	20	
0+87.5 S	B	85	15	
0+75 S	B	90	10	
0+62.5 S	B	85	15	
0+50 S	B	80	10	10
0+37.5 S	B	80	10	10
0+25 S	B	80	10	10
0+12.5 S	B	90	10	
0+00 B/L	B	90	10	
↘ 1+62.5 S	B	85	15	

L 8+00w

Sept 23/92

	hor	C	S	P
0+00 B/L	B	90	10	
0+12.55	B	85	10	5
0+255	B	90	10	
0+37.55	B	90	10	
0+505	B	85	15	
0+62.55	B	90	10	
0+755	B	90	10	
0+87.5	B	90	10	
1+06	B	85	15	
1+12.5	B	85	15	
1+25	B	90	10	
1+37.5	B	90	10	
1+50	B	90	10	
1+62.5	B	80	10	10
1+75	B	80	10	10
1+87.5	B	85	5	10
2+06	B	80	10	10
2+12.5	B	90	10	
2+25	B	90	10	
2+37.5	B	90	10	
2+50				

L7+00w

	hor	C	S	P
2+50S	B	90	10	
2+37.5S	B	90	10	
2+25S	B	95	5	
2+12.5S	B	90	10	
2+00S	B	90	10	
1+87.5S	B	85	10	5
1+75S	B	85	5	10
1+62.5S	B	95	5	
1+50	B	90	10	
1+37.5	B	80	10	10
1+25	B	80	10	10
1+12.5	B	80	10	10
1+06	B	85	5	10
0+87.5	B	90	10	
0+75	B	85	5	10
0+62.5	B	90	10	
0+50	B	90	10	
0+37.5	B	90	10	
0+25	B	85	5	10
0+12.5	B	90	10	
0+00 B/L	B	90	10	

L6700W

	hor	C	S	P
0+00B/L	B	90	10	
0+12.55	B	90	10	
0+25.5	B	90	5	5
0+37.55	B	90	10	
0+50.5	B	90	10	
0+62.55	B	90	5	5
0+75.5	B	90	5	5
0+87.55	B	90	10	
1+00	B	85	5	10
1+12.5	B	90	5	5
1+25	B	80	10	10
1+37.5	B	80	10	10
1+50	B	80	10	10
1+62.5	B	85	15	
1+75	B	90	10	
1+87.5	B	90	10	
2+00	B	90	10	
2+12.5	B	90	10	
2+25	B	90	5	5
2+37.5	N/S			
2+50	B	90	10	

Line 5+00w

	hor	C	S	P
2+50.5	B	90	10	
2+37.5	B	90	10	
2+25	B	95	5	
2+12.5	B	90	5	5
2+00	B	90	10	
1+87.5	B	90	10	
1+75	B	90	10	
1+62.5	N/S			
1+50	B	90	5	5
1+37.5	B	85	10	5
1+25	B	90	10	
1+12.5	B	90	10	
1+00	B	80	10	10
0+87.5	B	80	10	10
0+75	B	70	10	20
0+62.5	B	80	10	10
0+50	B	80	10	10
0+37.5	B	70	15	15
0+25	B	80	10	10
0+12.5	B	90	5	5
0+00 B/L	B	90	5	5

Line 4+00W

	hor	C	S	P
0+00B/L	B	85	15	
0+12.55	N/S			
0+25.5	B	85	15	
0+37.55	B	90	10	
0+50.5	B	90	10	
0+62.55	B	95	5	
0+75	B	90	10	
0+87.5	B	90	5	5
1+00	B	95	5	
1+12.5	B	80	10	10
1+25	B	85	5	10
1+37.5	B	80	10	10
1+50	B	85	5	10
1+62.5	B	90	10	
1+75	B	90	✓	10
1+87.5	B	85	5	10
2+00	B	85	5	10
2+12.5	B	80	5	15
2+25	B	80	10	10
2+37.5	B	80	10	10
2+50				

Line 3+00W

	hor	C	S	P
2+50S	B	85	10	5
2+37.5S	B	90	10	
2+25S	B	90	10	
2+12.5S	B	90	10	
2+00S	B	95	5	
1+87.5S	B	90	5	5
1+75S	B	80	10	10
1+62.5	B	80	10	10
1+50	B	90	5	5
1+37.5	B	90	5	5
1+25	B	90	5	5
1+12.5	B	80	10	10
1+00	B	95	/	5
0+87.5		N/S		
0+75	B	80	5	15
0+62.5	B	80	10	10
0+50	B	85	15	
0+37.5	B	95	5	
0+25	B	90	/	10
0+12.5	B	85	5	10
0+00B/L	B	90	5	5

Line 2+00w

	hor	C	S	P
0+00B/L	B	90	10	
0+12.55	B	90	10	
0+25.5	B	95	5	
0+37.55	B	95	5	
0+50.5	N/S			
0+62.55	B	90	10	
0+75.5	B	90	5	5
0+87.55	B	95	5	
1+00	B	90	10	
1+12.5	N/S			
1+25	B	80	10	10
1+37.5	B	80	10	10
1+50	B	95	5	
1+62.5	B	90	10	
1+75	B	90	/	10
1+87.5	B	90	10	
2+00	B	90	10	
2+12.5	B	95	5	
2+25	B	95	5	
2+37.5	B	90	5	5
2+50				

Line 1+00w

	hrs	C	S	P
2+50 S	B	90	10	
2+37.5 S	B	90	5	5
2+25 S	B	90	5	5
2+12.5 S	B	85	15	
2+00 S	B	90	5	5
1+87.5	B	80	10	10
1+75	B	80	10	10
1+62.5		N 15		
1+50	B	80	10	10
1+37.5	B	90	10	
1+25	B	80	10	10
1+12.5	B	80	10	10
1+00	B	90	10	
0+87.5	B	90	/	10
0+75	B	90	10	
0+62.5	B	80	10	10
0+50	B	90	10	
0+37.5	B	95	5	
0+25	B	95	5	
0+12.5	B	95	5	
0+00 B/L	B	90	5	5

Sept 24/92
Line 0+00w

	hor	C	S	P
2+50S	B	90	10	
2+37.5S	B	90	5	5
2+25S	B	85	5	10
2+12.5S	B	90	10	
2+00S	B	80	10	10
1+87.5	B	80	10	10
1+75	B	80	10	10
1+62.5	B	85	5	10
1+50	B	90	10	
1+37.5	B	90	10	
1+25	B	90	10	
1+12.5	B	90	5	5
1+00	B	90	5	5
0+87.5	B	90	10	
0+75	B	80	10	5
0+62.5		N/S		
0+50	B	80	10	10
0+37.5	B	90	10	
0+25	B	90	10	
0+12.5	B	90	/	10
0+00 B/L		N/S		

Line 0400W

	hor	C	S	P
0+12.5N	B	80	10	10
0+25N	B	80	10	10
0+37.5N	N/S			
0+50N	B	90	10	
0+62.5N	B	90	10	
0+75N	B	90	10	
0+87.5	B	90	5	5
1+00	B	90	5	5
1+12.5	B	70	10	20
1+25	B	70	10	20
1+37.5	B	90	10	
1+50	B	90	10	
1+62.5	B	90	10	
1+75	N/S			
1+87.5	B	80	10	10
2+00	B	90	10	
2+12.5	B	70	10	20
2+25	B	80	10	10
2+37.5	B	85	5	10
2+50	B	85	5	10

Line 1+00W

	hor	C	S	P
2+50N	B	85	5	10
2+37.5N	B	90	10	
2+25N	B	80	10	10
2+12.5N	B	70	15	15
2+00N	B	70	15	15
1+87.5N	B	70	15	15
1+75N	B	80	10	10
1+62.5N	B	80	10	10
1+50	B	90	10	
1+37.5		N/S		
1+25	B	90	10	
1+12.5	B	90	10	
1+00	B	85	10	5
0+87.5	B	90	10	
0+75		N/S		
0+62.5	B	80	20??	
0+50	B	80	20??	
0+37.5	B	90	10	
0+25	B	90	10	
0+12.5		N/S		
0+00				

Line 2+00W

	hor	C	S	P
0+12.5N	B	90	10	
0+25N	B	90	10	
0+37.5N	B	85	5	10
0+50N	B	85	5	10
0+62.5N	B	80	10	10
0+75N	B	90	10	
0+87.5N	B	85	5	10
1+00N	B	80	10	10
1+12.5	B	90	10	
1+25	B	90	10	
1+37.5	B	70	15	15
1+50	B	90	10	
1+62.5	B	80	10	10
1+75	B	90	10	
1+87.5	B	90	10	
2+00	B	80	10	10
2+12.5	B	80	10	10
2+25	B	95	5	
2+37.5	B	70	15	15
2+50	B	85	5	10

Line 3+00W

	logs	C	S	P
2+50N	B	90	10	
2+37.5N	B	80	10	10
2+25N	B	80	10	10
2+12.5N	B	80	10	10
2+00N	B	85	15	
1+87.5N	B	85	15	
1+75N	B	90	10	
1+62.5N	B	90	5	5
1+50	B	85	10	5
1+37.5	B	90	10	
1+25	B	80	10	10
1+12.5	B	80	10	10
1+00	B	80	10	10
0+87.5	B	75	10	15
0+75	B	90	10	
0+62.5	B	95	5	
0+50	B	95	5	
0+37.5	B	90	5	5
0+25	B	70	15	15
0+12.5	B	70	15	15

Line 4400W

	hor	C	S	P
0+12.5N	B	85	5	10
0+25N	B	80	10	10
0+37.5N	B	90	10	
0+50N	B	90	10	
0+62.5N	B	85	10	5
0+75N	B	90	5	5
0+87.5N	B	80	10	10
1+00N	B	90	5	5
1+12.5	B	80	5	15
1+25	B	80	10	10
1+37.5	B	80	10	10
1+50	B	90	5	5
1+62.5	N/S			O/L
1+75	B	70	15	15
1+87.5	N/S			O/L
2+00	N/S			O/L
2+12.5	B	85	5	10
2+25	B	85	10	5
2+37.5	B	70	15	15
2+50	B	90	10	