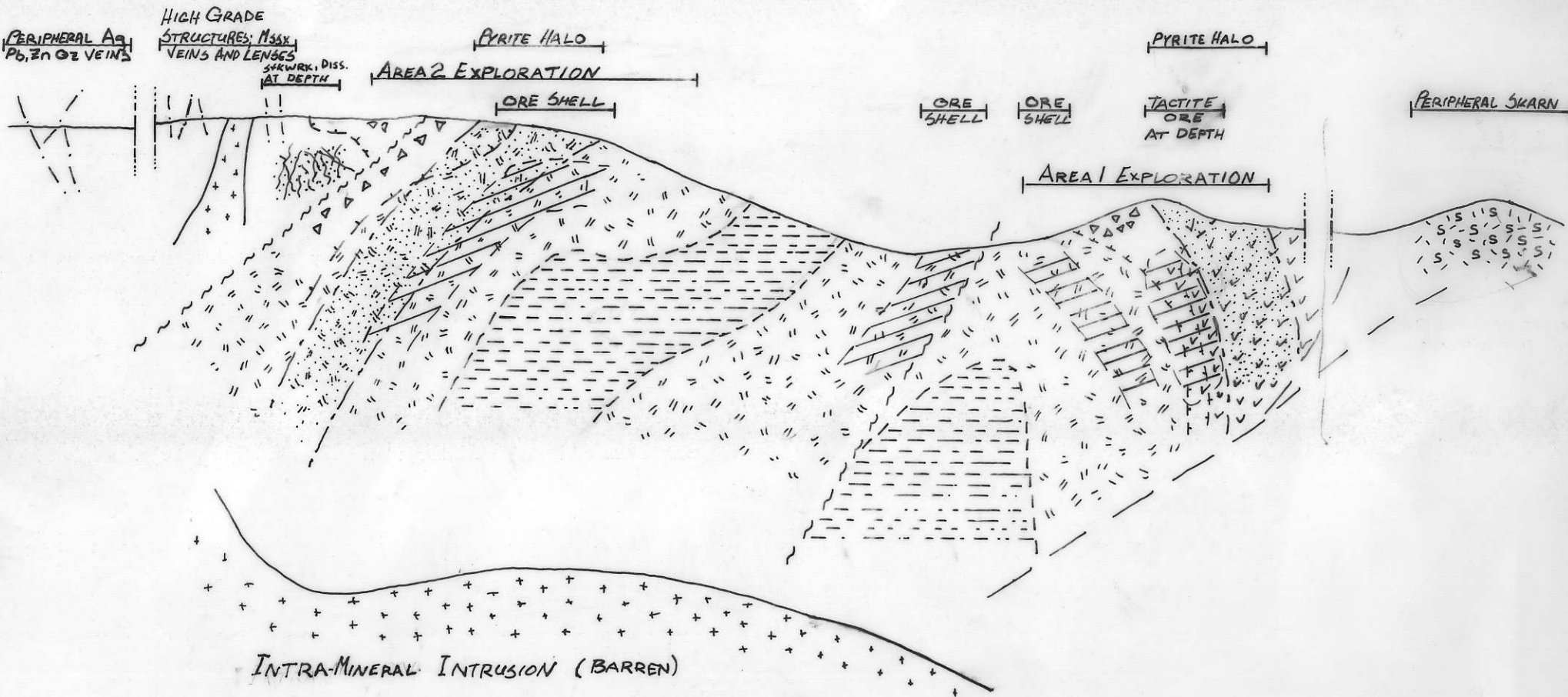
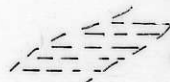



S


N

INTENSE ARGILLIC | INTERMEDIATE ARGILLIC | K-SILICATE | INTERMEDIATE ARGILLIC | INTENSE ARGILLIC




 CENTRAL K-SILICATE ZONE  
 CHLORITE-MAGNETITE ALTERATION


 DIORITE-QUARTZ DIORITE PORPHYRY  
 INTERMEDIATE ARGILLIC ALTERATION  
 INCLUDES SPECULARITE + CHLORITE  
 VEINS, GYPSUM, HEMATIZED MT.


 INTENSE SILICA FLOODING  
 AND REPLACEMENT; HYDROTHERMAL  
 BRECCIATION  
 PYRITIC HALO

POTENTIAL ORE ZONES.

|                       |            |
|-----------------------|------------|
| TAM WILDROSE PROPERTY |            |
| SCHEMATIC SECTION     |            |
| METALLOGENIC MODEL    |            |
| FACING WEST           |            |
| NOT TO SCALE          | Sept. 1991 |
|                       | C.J.C.     |

825631