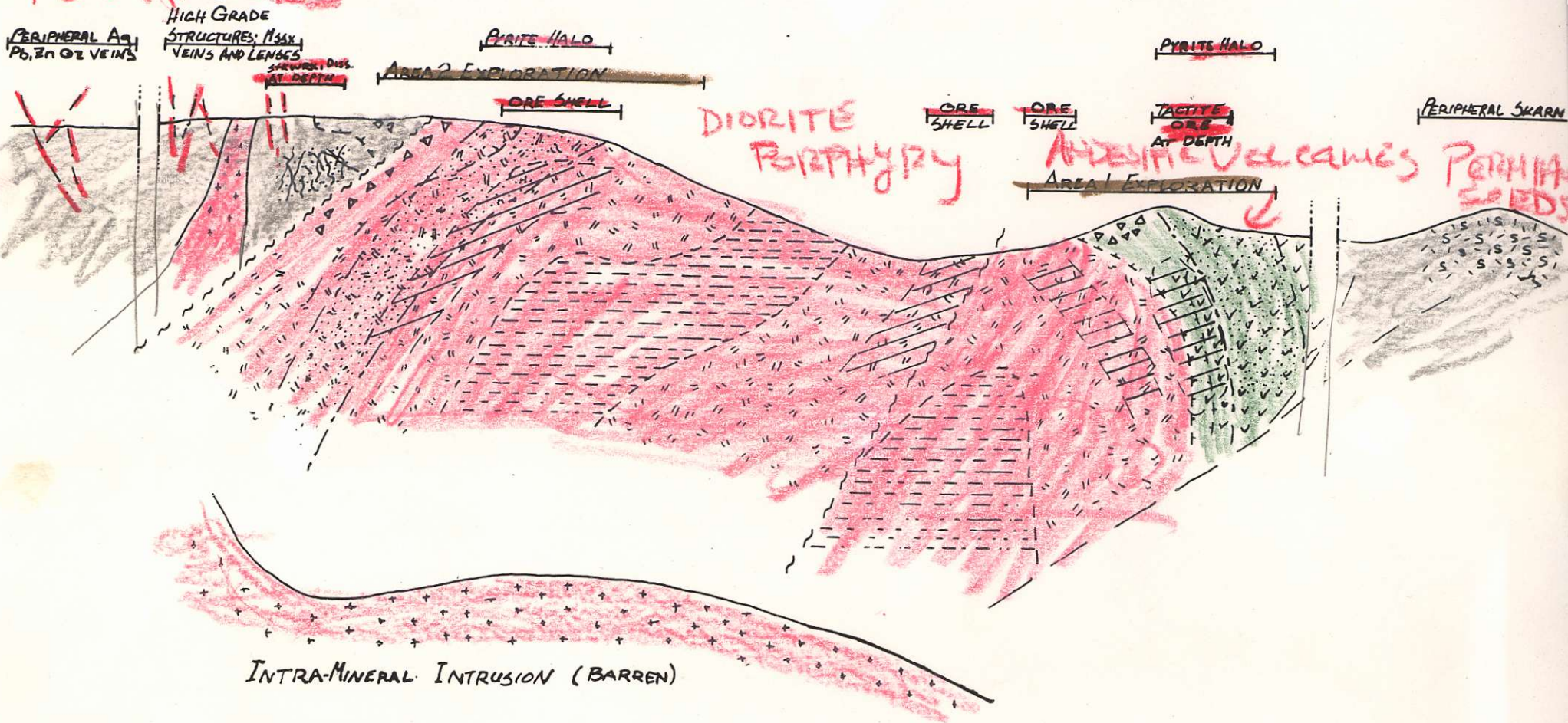


PERMIAN SOLEDS

~~INTENSE ARGILLIC~~ ~~INTERMEDIATE ARGILLIC~~ ~~K-SILICATE~~ ~~INTERMEDIATE ARGILLIC~~ ~~INTENSE ARGILLIC~~



~~CENTRAL K-SILICATE ZONE~~
~~CHLORITE-MAGNETITE ALTERATION~~

~~INTENSE SILICA FLOODING~~
~~AND REPLACEMENT; HYDROTHERMAL~~
~~BRACCIATION~~

~~PYRITIC HALO~~

~~DIORITE-QUARTZ DIORITE PORPHYRY~~
~~INTERMEDIATE ARGILLIC ALTERATION~~
~~INCLUDES SPECULARITE + CHLORITE~~
~~VEINS, GYPSUM, HEMATITE, ET.~~

~~POTENTIAL ORE ZONES.~~

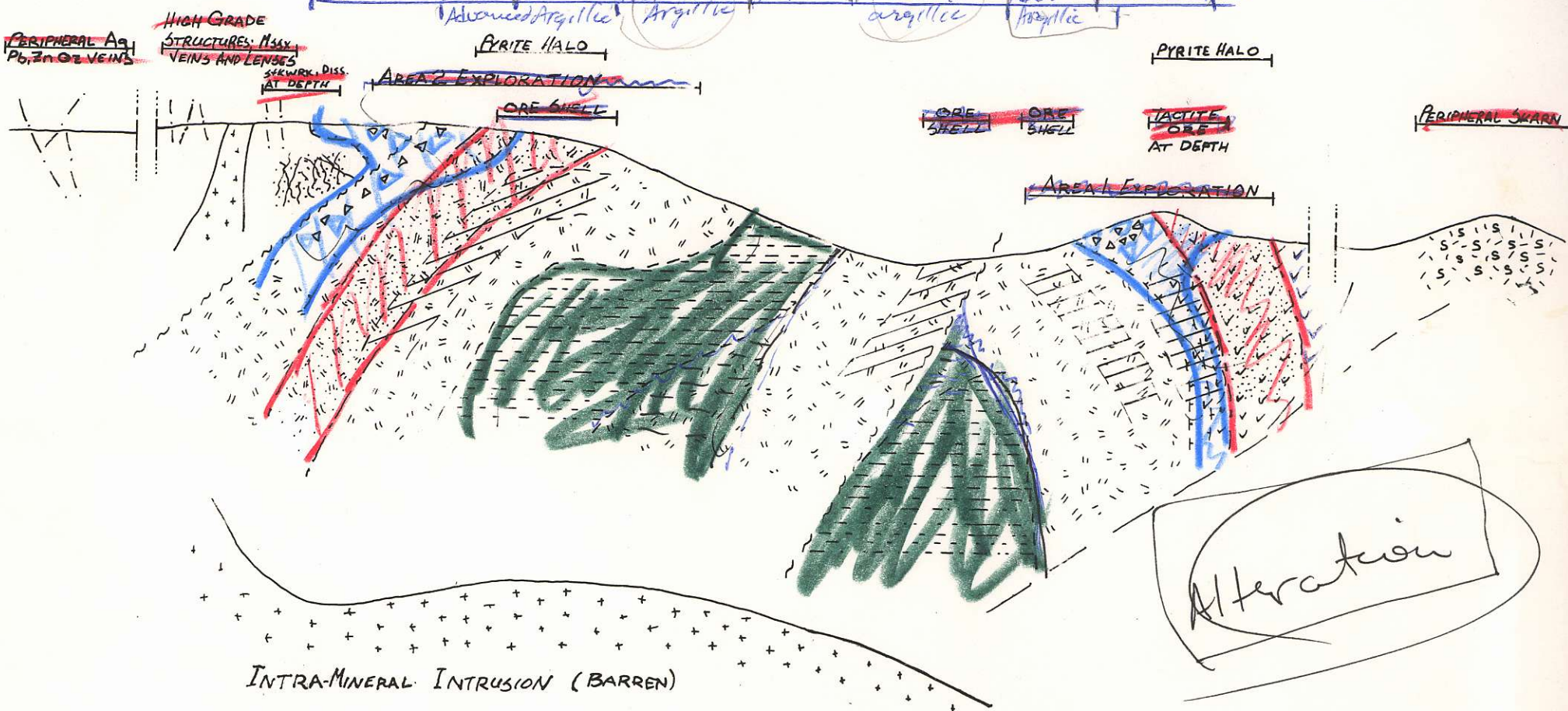
825628

TAM-WILDROSE PROPERTY	
SCHEMATIC SECTION	
METALLOGENIC MODEL	
FACING WEST	
NOT TO SCALE	Sept. 1991
	C.J.C.

5

N

~~INTENSE ARGILLIC~~ | ~~INTERMEDIATE ARGILLIC~~ | ~~K-SILICATE~~ | ~~INTERMEDIATE ARGILLIC~~ | ~~INTENSE ARGILLIC~~
 Silicification | Advanced Argillite | Intermediate Argillite | K-Silicate | Intermediate argillite | Adv. silicification
 Pyrite Halo | Pyrite Halo



HIGH GRADE
 STRUCTURES: MANY
 VEINS AND LENSES
 SKW. DISS.
 AT DEPTH

PERIPHERAL Ag,
 Pb, Zn OZ VEINS

AREA 2 EXPLORATION

ORE SHELL

ORE SHELL

LAGGITE
 ORE
 AT DEPTH

PERIPHERAL SWARM

AREA 1 EXPLORATION

INTRA-MINERAL INTRUSION (BARREN)

Alteration

CENTRAL K-SILICATE ZONE
 CHLORITE-MAGNETITE ALTERATION

DIORITE-QUARTZ DIORITE PORPHYRY
 INTERMEDIATE ARGILLIC ALTERATION
 INCLUDES SPECULARITE + CHLORITE
 VEINS, GYPSUM, HEMATITE, ET.

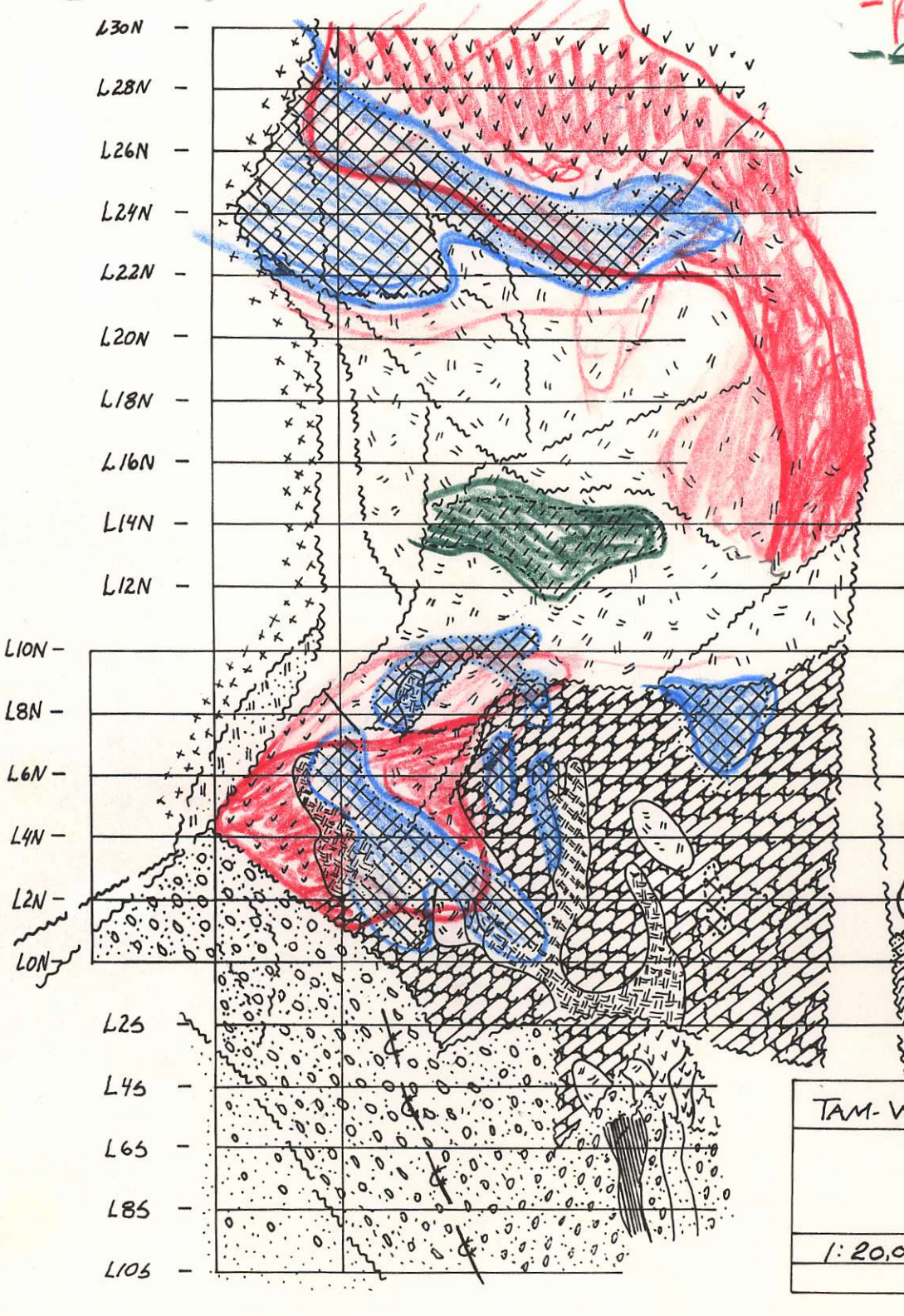
INTENSE SILICA FLOODING
 AND REPLACEMENT; HYDROTHERMAL
 BRECCIATION
 PYRITIC HALO

POTENTIAL ORE ZONES.

TAM-WILDROSE PROPERTY	
SCHEMATIC SECTION	
METALLOGENIC MODEL	
FACING WEST	
NOT TO SCALE	Sept. 1991
	C.J.C.

Chlorite magnetite alteration
(retrograde alteration of biotite).

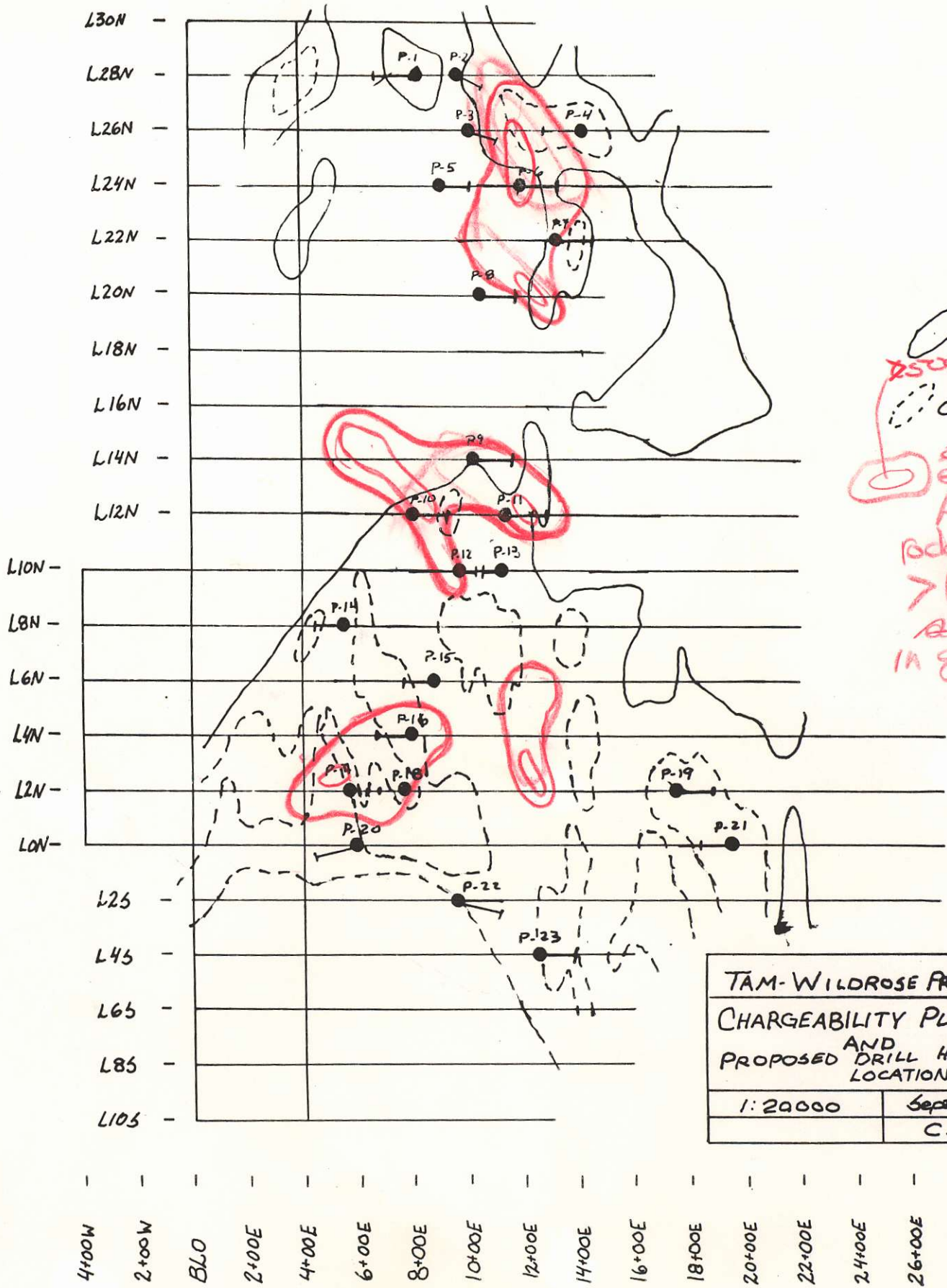
Silicification
- Pyritization
~~Chert~~



- TERTIARY
- *** MAFIC VOLCANICS
- TUFFACEOUS SEDS.
- CRETACEOUS
- ||| DIORITE
- ||||| CHLORITE-MAGNETIT.
- CARBONIFEROUS/PERMIAN
- ∇∇∇ ANDESITIC VOLCANIC
- XXX BEDDED CHERTY SEDS
- ||||| GREY ARGILLITE
- CONGLOMERATE
- SANDSTONE/CONGLOM.
- ||||| GREY GREEN PHYLLIT.
- ||||| QUARTZITE
- ||||| IMPURE LIMESTONE
- ||||| CALCAREOUS PHYLLITE
- ||||| HORNBLENDE DIORITE
- ||||| INTENSE ARGILLIC ALT (silicification)

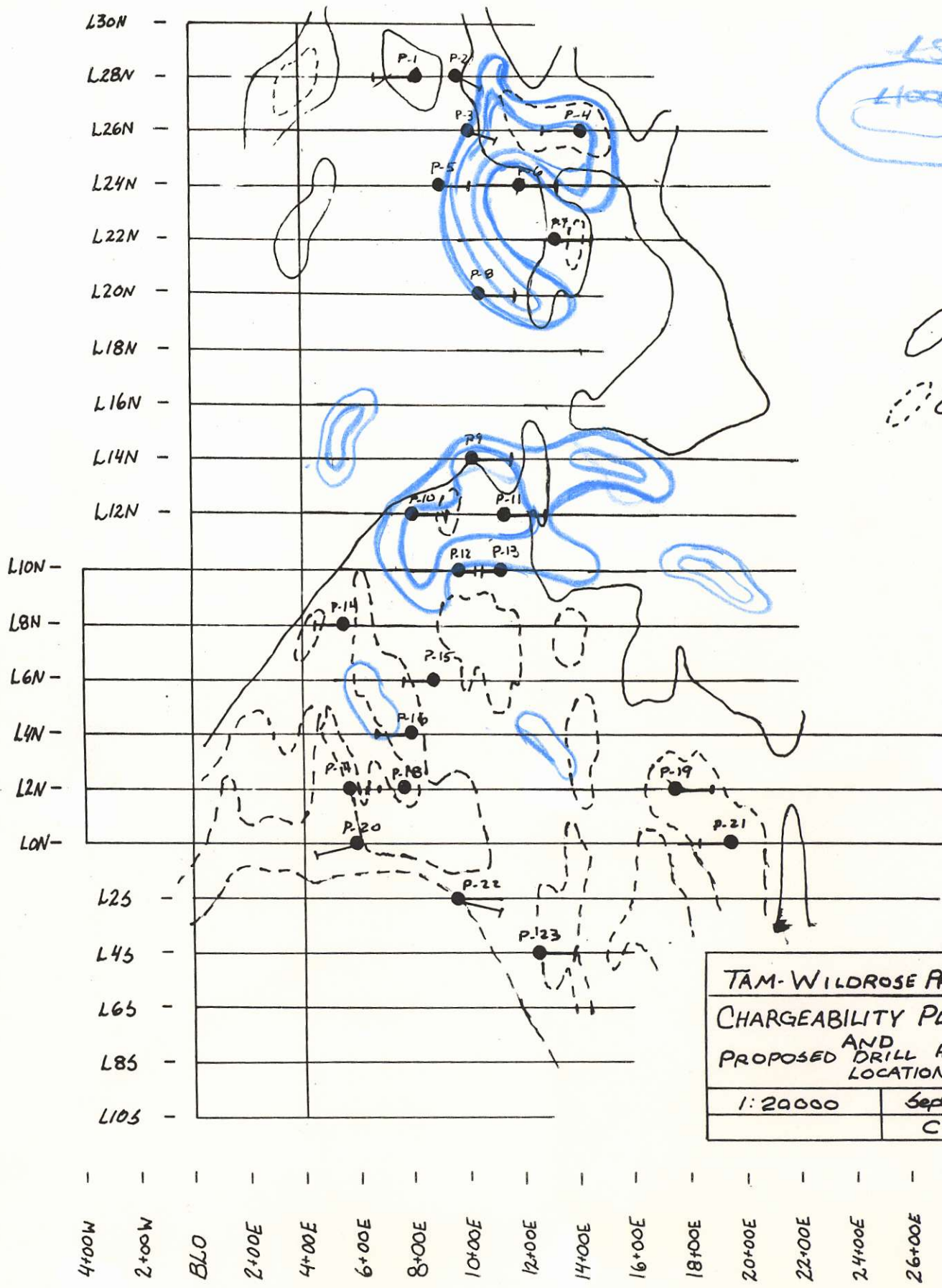
TAM-WILDROSE PROPERTY	
GEOLOGY	
1:20,000	Sept 1991
	C.J.C.

4+00W 2+00W BLO 2+00E 4+00E 6+00E 8+00E 10+00E 12+00E 14+00E 16+00E 18+00E 20+00E 22+00E 24+00E 26+00E 28+00E



+10mV/V
 Chargeability
 2500ppb
 +20 mV/V
 Chargeability
 outline
 of
 Areas of
 Biogeochem
 >100ppb Au
 at surface
 in grab samples

TAM-WILDROSE PROPERTY	
CHARGEABILITY PLAN AND PROPOSED DRILL HOLE LOCATIONS	
1:20000	Sept. 1991
	C.J.C.



5000 pphm Cu
 4000 pphm Cu

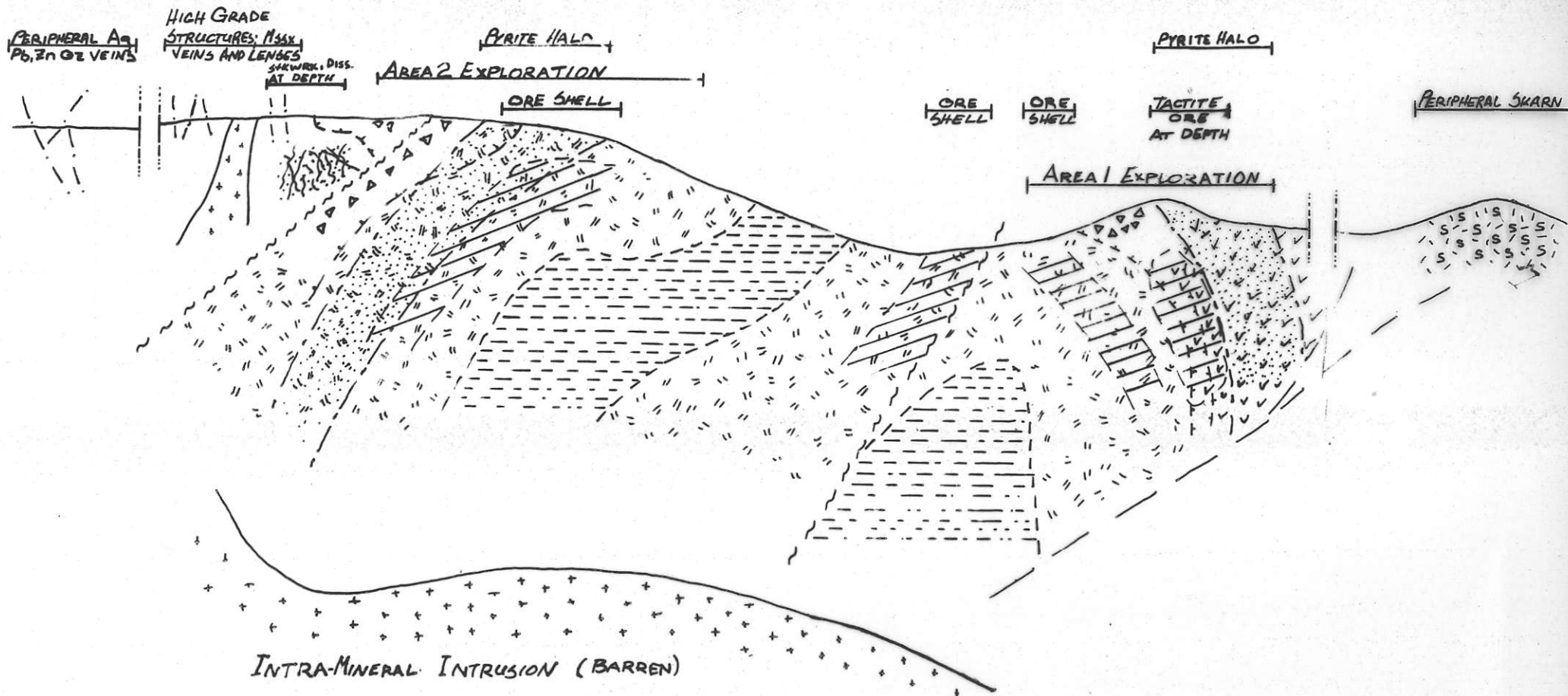
+10 mV/V
 Chargeability

+20 mV/V
 Chargeability


TAM-WILDROSE PROPERTY	
CHARGEABILITY PLAN	
AND PROPOSED DRILL HOLE LOCATIONS	
1:20000	Sept. 1991
C.J.C.	


4+00W 2+00W BLO 2+00E 4+00E 6+00E 8+00E 10+00E 12+00E 14+00E 16+00E 18+00E 20+00E 22+00E 24+00E 26+00E 28+00E

INTENSE ARGILLIC, INTERMEDIATE ARGILLIC, K-SILICATE, INTERMEDIATE ARGILLIC, INTENSE ARGILLIC




INTRA-MINERAL INTRUSION (BARREN)


 CENTRAL K-SILICATE ZONE
 CHLORITE-MAGNETITE ALTERATION


 DIORITE-QUARTZ DIORITE PORPHYRY
 INTERMEDIATE ARGILLIC ALTERATION
 INCLUDES SPECULARITE + CHLORITE
 VEINS, GYPSUM, HEMATIZED M.

POTENTIAL ORE ZONES.


 INTENSE SILICA FLOODING
 AND REPLACEMENT; HYDROTHERMAL
 BRECCIATION
 PYRITIC HALO

TAM-WILDROSE PROPERTY	
SCHEMATIC SECTION	
METALLOGENIC MODEL	
FACING WEST	
NOT TO SCALE	Sept. 1991
	C.J.C.

