

# MINNOVA

825386

824/5  
MEMORANDUMFile  
NTS

DATE: May 10th, 1991  
A TO: AJD, JP  
COPIES A COPIES TO: DHW, GSW  
DE FROM: IDP  
SUJET SUBJECT: Quinto Mining Corp. property, Lumby, BC.

---

I am reviewing this property for potential Sam mill feed.

## Location

1 km north of Lumby on the Mabel Lake road, approximately 140 km by road from Samatosum. It lies within the Brenda JV area.

## Ownership

100% owned by Quinto Mining Corporation of Vancouver.

## Background

Logging in the 1960's uncovered high grade sphalerite, tetrahedrite, galena veins which were subsequently mined and processed by a small mill on site at 50 tpd. Between 1968 and 1970 approximately 1500 tons of ore was shipped to Trail. Subsequent operators increased mill capacity to 150 tpd. Operations ceased in 1981 for unknown reasons.

Quinto purchased the property in 1983 and carried out geochem, geology and geophysical surveys resulting in the discovery of the Plateau shear zone. This zone, a major quartz - graphite shear along the axis of an anticline, has been the focus of all Quinto's work. It contains highly anomalous gold over at least 1500m in length, 200m in dip and up to 140m in width. The gold occurs free, with pyrite and possibly with tellurides. It's relationship to the high sulphide veins mined in the past is not yet clear.

While the presence of gold is obvious, just how much there is has been a problem. This one has it all - nugget effect, telluride assay problems, very high (potentially recoverable?) graphite content, etc. To try to sort this out, Quinto set out, in 1988 to take a bulk sample. They did most of the required drifting and

were just starting the crosscuts for sampling when their junior partner ran out of money and the work was halted. The property has been dormant since as they tried to raise additional funding.

The best available estimates of grade and tonnes is based on RC drilling and conventional geochemical gold assays. This yields 518,000 tons of 0.075 opt Au or 250,000 tons of 0.115 opt Au. It is open in at least two directions.

### **Immediate Action**

I will visit the property on May 15th and review all available data over the next couple of weeks.

### **Concerns**

1. Quinto is solely concerned with the gold zone and wishes to complete their bulk sampling in order to get a better handle on gold grades and the recoverability of the graphite. While this is an interesting target in itself, it does nothing for Sam. To assess the potential for Sam compatible ore would require a refocussing of priorities. This will make negotiations tricky.
2. There are rumours of ownership problems that will have to be checked out thoroughly.
3. The owners are "hands on" people with distinct eccentricities. It's likely that the only way to get into the property to look for Sam type ore will be to fund their continued efforts on the gold zone. I doubt that this would be a good investment.

### **Preliminary Conclusions**

Subject to a thorough review of the data this property appears to have good potential for a few tens of thousands of tonnes to perhaps 100,000 tonnes of Sam feed. In addition it has excellent potential for a several million tonne gold deposit grading anything from 2.5 to 6 g/tonne or more in the Plateau zone and there are several other untested anomalies elsewhere on the property. The trick will be getting a deal which is acceptable to Minnova.

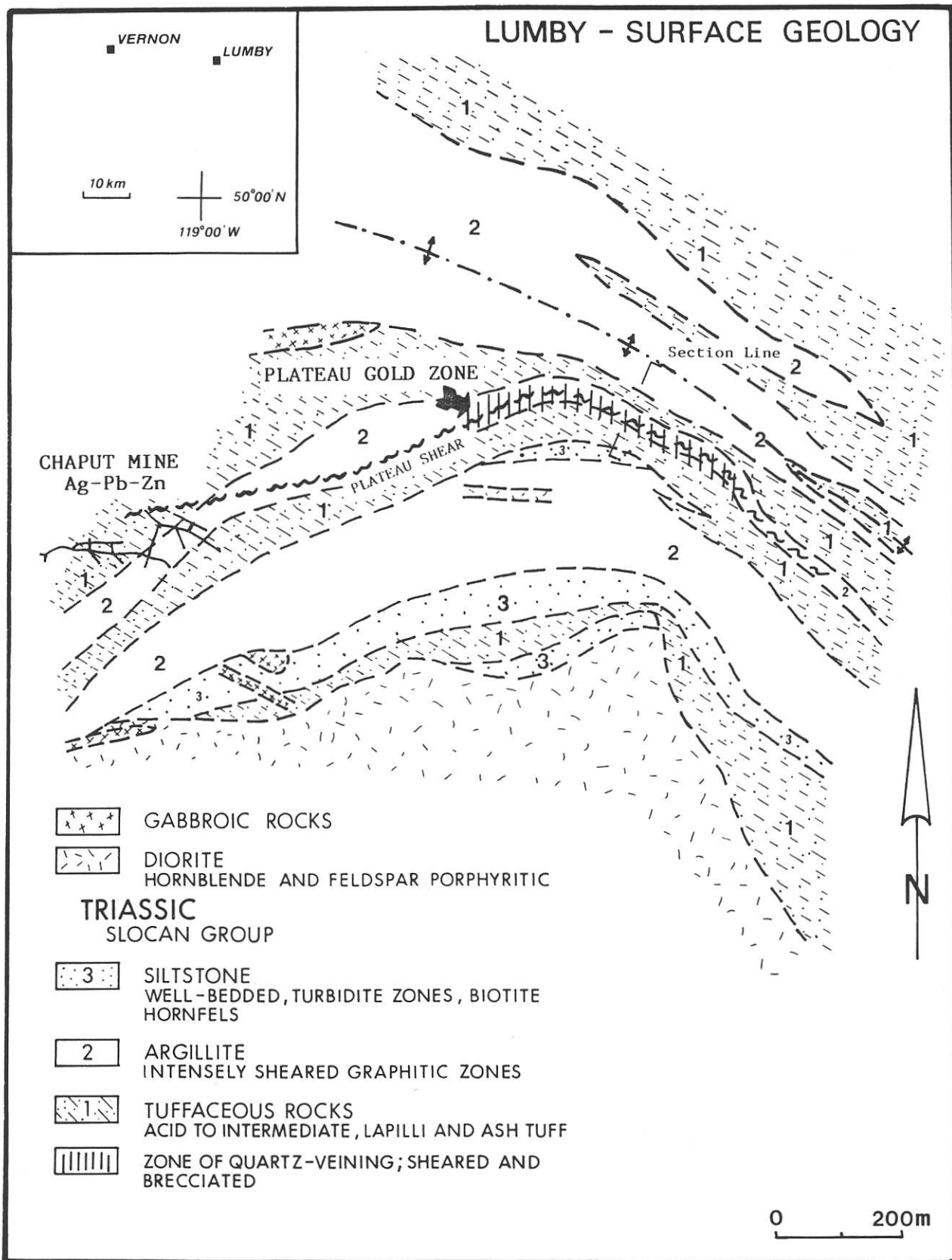


Figure B7. Surface geology of the Lumby (Chaput) project on Saddle Mountain, modified from mapping by D.L. Kuran, The Quinto Mining Corporation.

IPA 1 18" Au chip  
IPA 2 4' chip  
IPA 3 12" ven method

30 element ICP + Au assay if warranted

IPA 4 Liny?  
5 qtz dior  
6 Dion L  
BL + 900

MINNOVA LITHO PACKAGE #3

IPA 7 hi SP  
low PY  
8 qtz-PY  
9 hi SP  
hi PY

30 element ICP + Au

Assay if warranted



**MINERAL  
• ENVIRONMENTS  
LABORATORIES**  
(DIVISION OF ASSAYERS CORP.)

**SPECIALISTS IN MINERAL ENVIRONMENTS**  
CHEMISTS • ASSAYERS • ANALYSTS • GEOCHEMISTS

**VANCOUVER OFFICE:**  
705 WEST 15TH STREET  
NORTH VANCOUVER, B.C. CANADA V7M 1T2  
TELEPHONE (604) 980-5814 OR (604) 988-4524  
FAX (604) 980-9621

**SMITHERS LAB.:**  
3176 TATLOW ROAD  
SMITHERS, B.C. CANADA V0J 2N0  
TELEPHONE (604) 847-3004  
FAX (604) 847-3005

Assay Certificate

1V-0586-RA2

Company: MINNOVA INC.  
Project:  
Attn: I. PIRIE

Date: JUN-26-91  
Copy 1. MINNOVA INC., VANCOUVER, B.C.

We hereby certify the following Assay of 2 ROCK samples submitted JUN-21-91 by .

Sample Number	AU g/tonne	AU oz/ton
IPQ1	1.28	.037
IPQ8	1.77	.052



Certified by \_\_\_\_\_

*[Handwritten Signature]*

MIN-EN LABORATORIES











**MINERAL  
• ENVIRONMENTS  
LABORATORIES**  
(DIVISION OF ASSAYERS CORP.)

**SPECIALISTS IN MINERAL ENVIRONMENTS**  
CHEMISTS • ASSAYERS • ANALYSTS • GEOCHEMISTS

**VANCOUVER OFFICE:**  
705 WEST 15TH STREET  
NORTH VANCOUVER, B.C. CANADA V7M 1T2  
TELEPHONE (604) 980-5814 OR (604) 988-4524  
FAX (604) 980-9621

**SMITHERS LAB.:**  
3176 TATLOW ROAD  
SMITHERS, B.C. CANADA V0J 2N0  
TELEPHONE (604) 847-3004  
FAX (604) 847-3005

*Assay Certificate*

1V-0586-RA1

Company: **MINNOVA INC.**  
Project:  
Attn: **I.PIRIE**

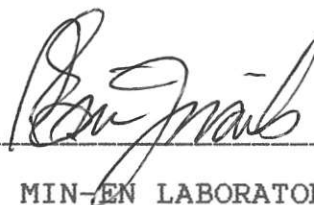
Date: **JUN-28-91**

Copy 1. MINNOVA INC., VANCOUVER, B.C.

*We hereby certify* the following Assay of 3 ROCK samples  
submitted JUN-21-91 by I.PIRIE.

Sample Number	LOI %
IPQ4	3.30
IPQ5	1.80
IPQ6	1.80

Certified by \_\_\_\_\_



MIN-EN LABORATORIES