

825349

COPY

Mr. Glen Hogg

W.M. Sirola

Dewar Creek Project, Nine Lake Anomaly (Mc claims)

July 13, 1972

Herewith magnetic, electromagnetic and geochemical results recently located on the Mc claims.

There was a small copper showing at O+00. The magnetic response is very good and is corroborated fairly well by electromagnetics. For some reason, however, the geochemical response is negligible.

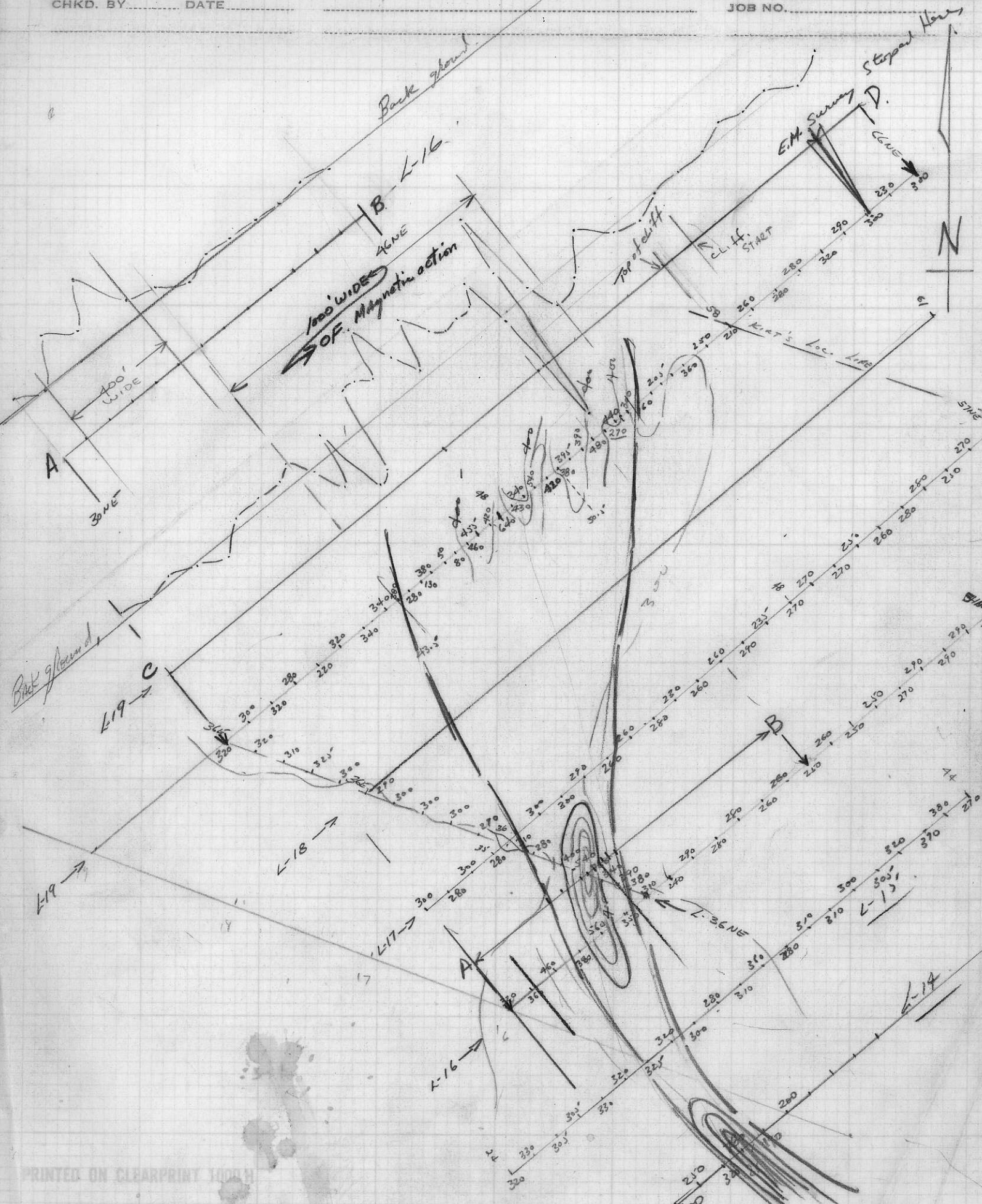
The anomaly might indicate magnetite in a conductive rock but it does bear some investigation, nonetheless.

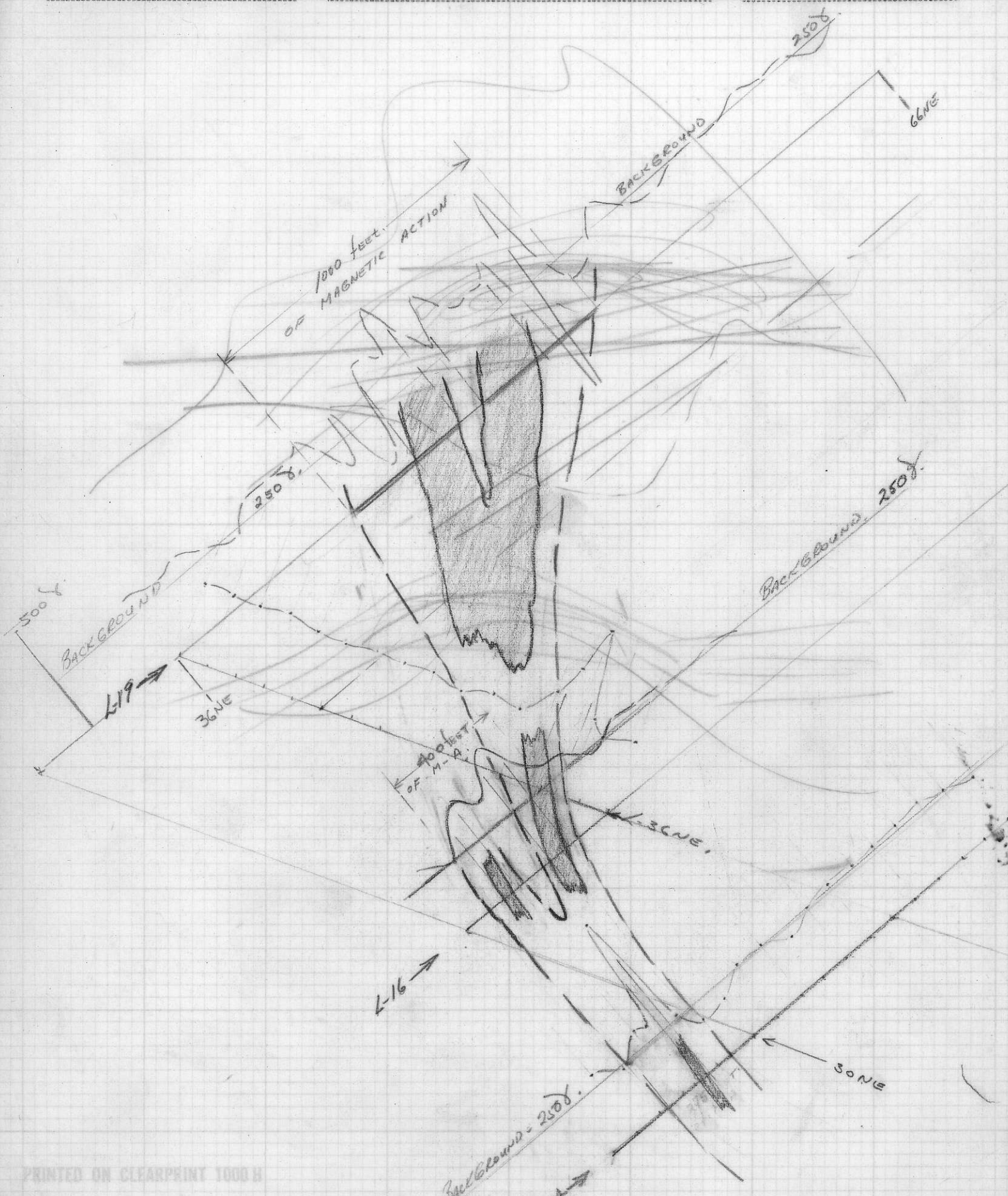
Fred Chow and Ted LaRose have done a neat job on this situation.

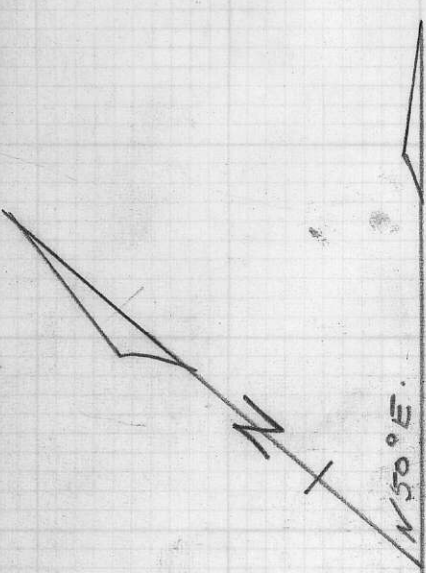
WMS/bw

W.M. Sirola

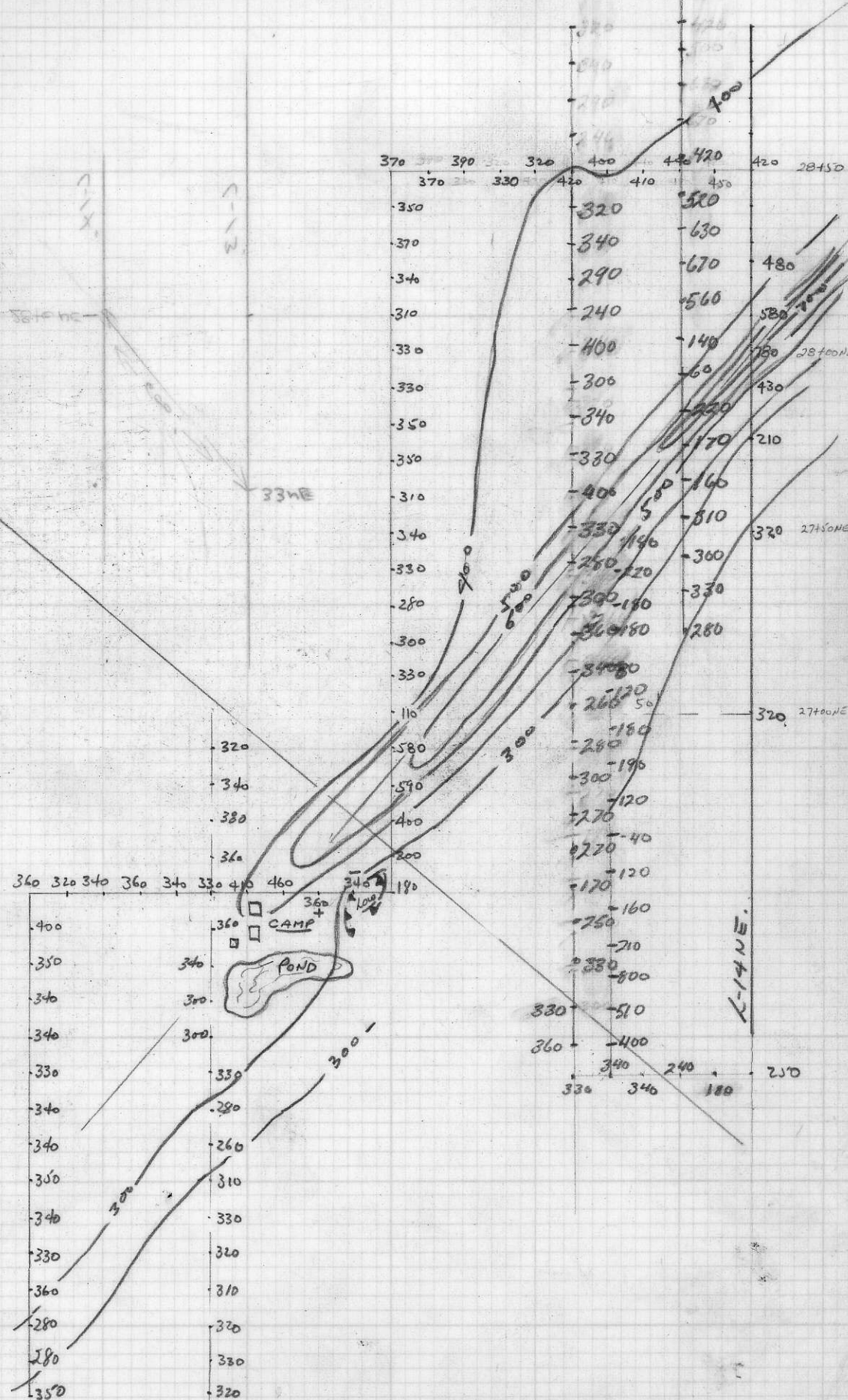
Encls.

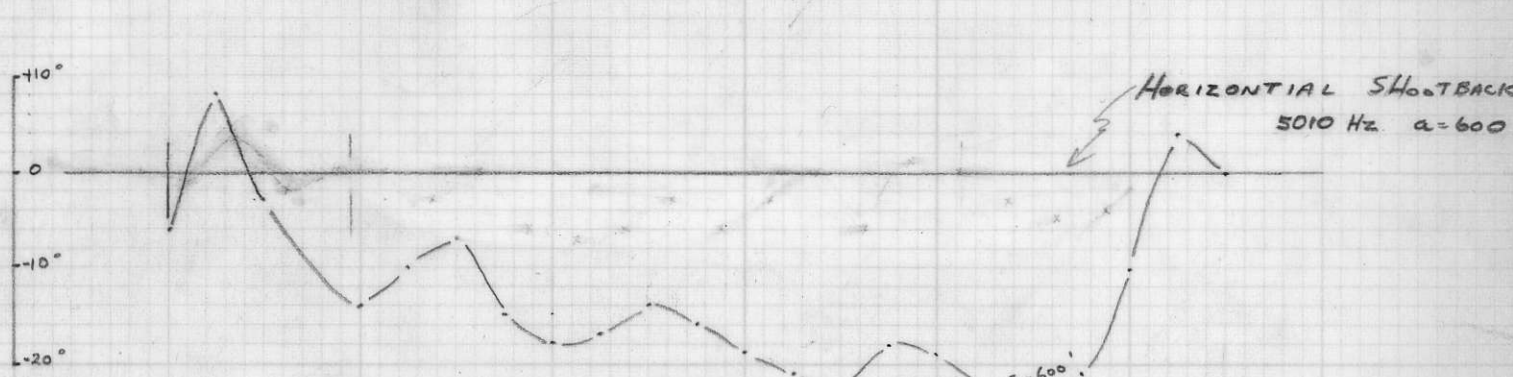
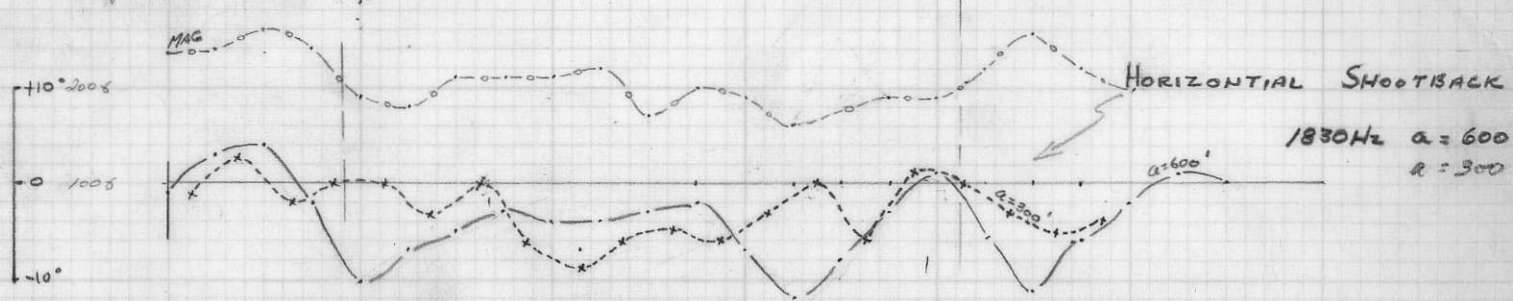
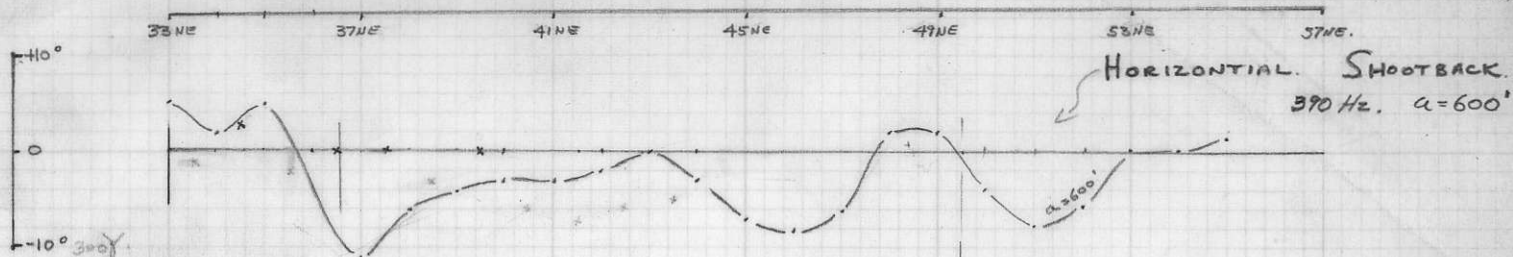






1" = 40 FEET.





LINE NO 13.
SCALE 1" = 400'

Job 72-114
SEPT. 29-72

DOC CLAIMS.

CRANBROOK, Be.

J. P. SURVEY

1

Qu. T. LARSON

3.14

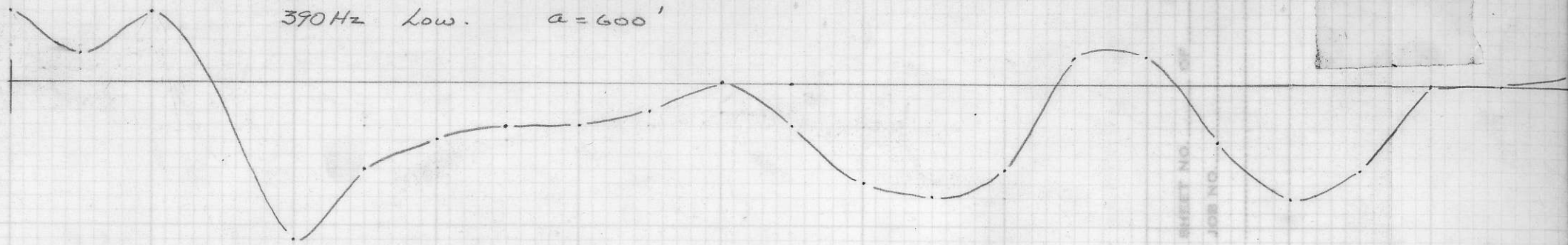
- Line #1 -

SP	dV.	T.	IP.	MV. Sec.	Z-R FT,
2700W -5	115	50	17.5	15.22	5777.60
0400 +23	70	20	8.5	12.14	8792.0
2700E +115	145	35	11.0	7.59	10,406.86
4400E -21	75	25	7.0	9.33	7,536.0
6400E -14	95	20	13.0	13.68	11,932.0
7400E +16	170	30	9.5	5.59	14,234.67
9400E -9	120	20	8.0	6.67	15,072.0
11400E -5	120	17	9.0	7.50	17,731.76

$$\frac{IP}{dV} \times 100 = MV. Sec.$$

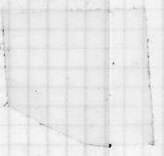
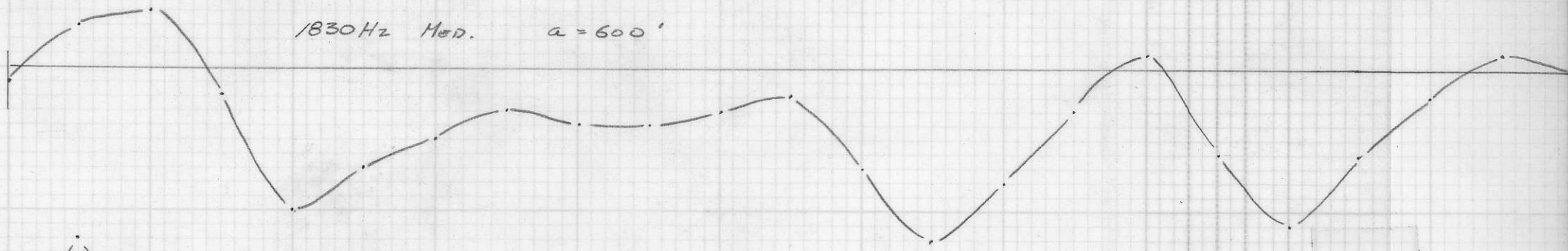
$$\frac{ZT(a) \times dV}{I} = Z - e FT,$$

390 Hz Low. a = 600'

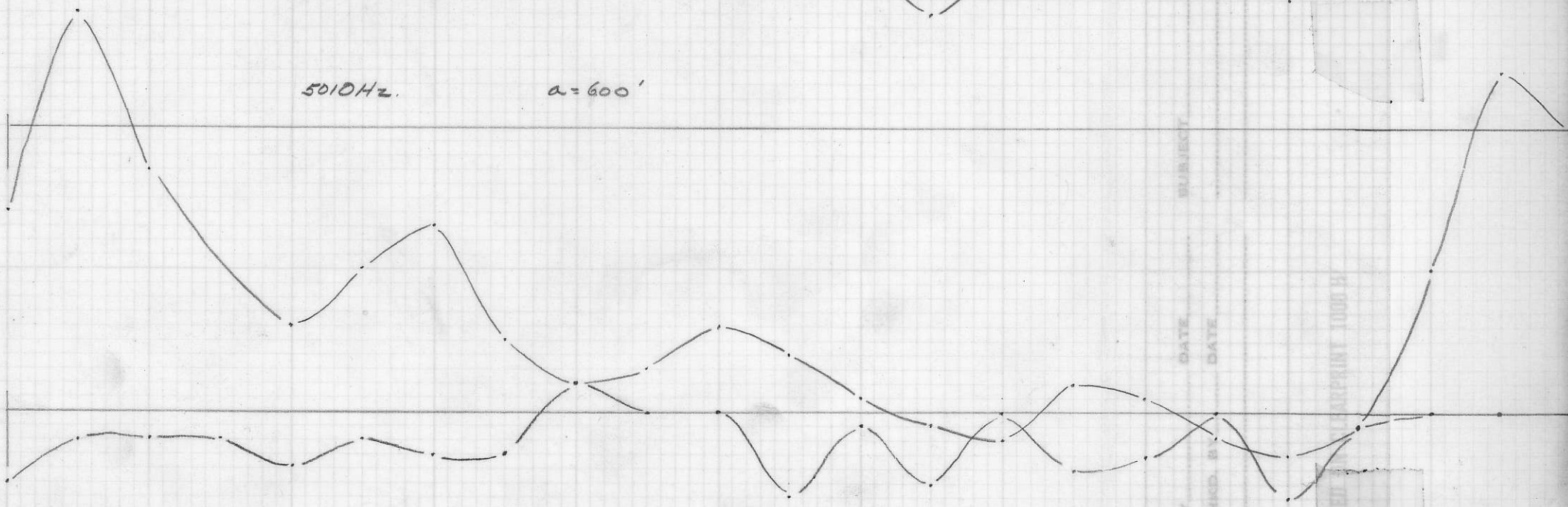


SHEET NO.
JOB NO.

1830 Hz Med. a = 600'



5010 Hz. a = 600'



DATE
SUBJECT
DATE
BY
CHOD. B.

PRINTED AND REPRODUCED BY THE U.S. GEOLOGICAL SURVEY

