

Mine

Nine Lake Claims  
Greenland Cr. B.R.

Date

July 29/73

Hole No.

Trench #1

Sample

N<sup>o</sup>

404

Dewar  
Creek  
Project

825309

From

0

To

10' N

Sample Length

10'

Remarks

Light gray gneiss  
also some diorite.

Likely broken bedrock.

Possibly transported

Assay For

W

NORTHERN MINER PRESS

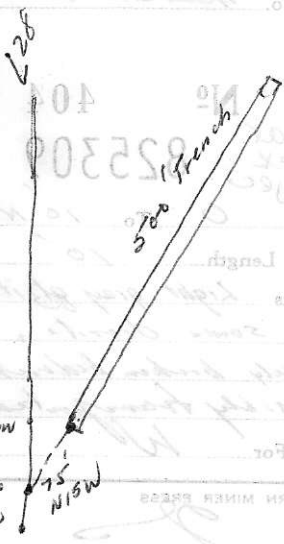
Signed



Mine \_\_\_\_\_

Date \_\_\_\_\_

Hole No. \_\_\_\_\_



NORTHERN MINER PRESS

Signed \_\_\_\_\_

Mine Nine Lake Grp

Date July 29/73

Hole No. Trench #1

Sample N<sup>o</sup> 405

From 10 To 22' N

Sample Length 12'

Remarks as #405

Assay For W

NORTHERN MINER PRESS

Signed JL

Mine Nine Lake Grp

Date July 29/73

Hole No. Trench #1

Sample N<sup>o</sup> 406

From 22 To 30' N

Sample Length 8'

Remarks Med. gray gtzite,  
A few fractures -  
tight

Assay For W

NORTHERN MINER PRESS

Signed JL

Mine Nine Lake Grp

Date July 29/73

Hole No. Trench #1

Sample N<sup>o</sup> 407

From 30' To 40' N

Sample Length 10'

Remarks as #406

Assay For W

NORTHERN MINER PRESS

Signed JL

Mine Nine Lake Grp

Date July 29/73

Hole No. Trench #1

Sample N<sup>o</sup> 408

From 40 To 50' N

Sample Length 10'

Remarks as #406

Assay For W

NORTHERN MINER PRESS

Signed JL

Mine Nine Lake

Date July 29/73

Hole No. Trench #1

Sample N<sup>o</sup> 409

From 50' To 60' N

Sample Length 10'

Remarks as #406

Assay For W

NORTHERN MINER PRESS

Signed JL

Mine Nine Lake Grp

Date July 29/73

Hole No. Trench #1

Sample N<sup>o</sup> 410

From 60' To 70' N

Sample Length 10'

Remarks as #406

Assay For W

NORTHERN MINER PRESS

Signed JL

Mine Nine Lake Grp

Date July 30/73

Hole No. Trench #1

Sample N<sup>o</sup> 411

From 70' To 80' N

Sample Length 10'

Remarks Light gray  
gtzite, massive,  
bedding barely visible.  
Minor fracturing

Assay For W

NORTHERN MINER PRESS

Signed JL

Mine Nine Lake Grp

Date July 30/73

Hole No. Trench #1

Sample N<sup>o</sup> 412

From 80' To 90' N

Sample Length 10'

Remarks as #411

Assay For W

NORTHERN MINER PRESS

Signed JL

Mine Nine Lake Grp

Date July 30/73

Hole No. Trench #1

Sample N<sup>o</sup> 413

From 90' To 100' N

Sample Length 10'

Remarks as #411

Assay For W

NORTHERN MINER PRESS

Signed JL

Mine Nine Lake Grp

Date July 31/73

Hole No. Trench #1

Sample N<sup>o</sup> 414

From 100 To 110 N

Sample Length 10'

Remarks Light gray gylite  
Multiple fracturing  
"Looks good W<sub>2</sub>O<sub>3</sub>"

Assay For W

NORTHERN MINER PRESS

Signed JL

Mine Nine Lake Grp

Date July 31/73

Hole No. Trench #1

Sample N<sup>o</sup> 415

From 110' To 120' N

Sample Length 10'

Remarks as #414

Assay For W

NORTHERN MINER PRESS

Signed JL

Mine Nine Lake Grp

Date July 31/73

Hole No. Trench #1

Sample N<sup>o</sup> 416

From 120 To 130 N

Sample Length 10'

Remarks as #414

Assay For W

NORTHERN MINER PRESS

Signed JL

Mine Nine Lake Grp

Date July 31/73

Hole No. Trench #1

Sample N<sup>o</sup> 417

From 130' To 140' N

Sample Length 10'

Remarks as #414

Assay For W

NORTHERN MINER PRESS

Signed JL

Mine Nine Lake Grp

Date July 31/73

Hole No. Trench #1

Sample N<sup>o</sup> 418

From 140' To 150' N

Sample Length 10'

Remarks L-gray gylite  
Minor fractg.  
"Looks wick W<sub>2</sub>O<sub>3</sub>"

Assay For W

NORTHERN MINER PRESS

Signed JL

Mine

Date July 31/73

Hole No.

Sample N<sup>o</sup> 419

From 150' To 160' N

Sample Length 10'

Remarks Gylite. Part bedrock  
in place + part transported.

Assay For W

NORTHERN MINER PRESS

Signed JL

Mine

Date

Hole No.

Sample N<sup>o</sup> 420

From 160' To 170' N

Sample Length 10'

Remarks as #419

Assay For

NORTHERN MINER PRESS

Signed

Mine Nine Lake Grp

Date July 31/73

Hole No. Trench #1

Sample N<sup>o</sup> 421

170' - 200' O.B. Not sampled  
200' - 210

From 170' To 200' N

Sample Length 10

Remarks Light gray gylite  
Not sampled

Assay For W

NORTHERN MINER PRESS

Signed JL

Mine N L Grp

Date July 31/73

Hole No. Trench #1

Sample N<sup>o</sup> 422

From 210' To 220' N

Sample Length 10'

Remarks as #421

Assay For W

NORTHERN MINER PRESS

Signed JL



Mine N. L. Group

Date July 31/23

Hole No. Trench #1

Sample No. 423

From 220 To 230' N

Sample Length 10'

Remarks L-gray gneiss & lg. dark diorite

Assay For W.

NORTHERN MINER PRESS

Signed J.L.

Mine Nine Lake

Date July 31/23

Hole No. Trench #1

Sample No. 424  
(230'-240' = o.B. <sup>not</sup> sampled)

From 240' To 250' N

Sample Length 10'

Remarks Diorite, dark, f.g. minor fracturing

Assay For W.

NORTHERN MINER PRESS

Signed J.L.

Mine N. L. Group

Date July 31/23

Hole No. Trench #1

Sample No. 425

From 250' To 260' N

Sample Length 10'

Remarks as #424

Assay For W.

NORTHERN MINER PRESS

Signed J.L.

Mine N.L. Group

Date July 31/23

Hole No. Trench #1

Sample No. 426

From 260' To 290' N

Sample Length 30'

Remarks Diorite, bedrock exposed in few spots only

Assay For W.

NORTHERN MINER PRESS

Signed J.L.

Mine Nine Lake Group  
Greenland Cr.

Date July 31/23

Hole No. Trench #1

Sample No. 427

From 290' To 310'

Sample Length 20'

Remarks as #426

Assay For W.

NORTHERN MINER PRESS

Signed J.L.

Mine Nine Lake Group  
Greenland Cr. BL

Date July 31/23

Hole No. Trench #1

Sample No. 428

From 310' To 330'

Sample Length 20'

Remarks as #426

Assay For W.

NORTHERN MINER PRESS

Signed J.L.

Mine Nine Lake Group  
Greenland Cr.

Date Aug 2/23

Hole No. Trench #1

Sample No. 429

From 330' To 350' N

Sample Length 20'

Remarks Diorite, Much fractg. Looks good w/O<sub>2</sub>. Angular & sub-angular - probably broken bedrock

Assay For W.

NORTHERN MINER PRESS

Signed J.L.

Mine Nine Lake Group  
Greenland Cr. P.C.

Date Aug 2/23

Hole No. Trench #1

Sample No. 430

From 350' To 360' N

Sample Length 10'

Remarks as 370'-350'

Assay For W.

NORTHERN MINER PRESS

Signed J.L.

Mine Nine Lake

Date Aug 2/23

Hole No. Trench #1

Sample No. 431

From 360' To 370' N

Sample Length 10'

Remarks Diorite f.g. dark highly fractg. - bedrock. L-shaped bedrock fragments up to 1/2" wide.

Assay For W.

NORTHERN MINER PRESS

Signed J.L.

Mine N. L. Group

Date July 31/23

Hole No. Trench #1

Sample No. **423**

From 220 To 230' N

Sample Length 10'

Remarks L-gray granite & lg. dark diorite

Assay For W.

NORTHERN MINER PRESS  
Signed J.L.

Mine Nine Lake

Date July 31/23

Hole No. Trench #1

Sample No. **424**  
(230'-240' = o.B. <sup>not</sup> sampled)

From 230' To 240' N

Sample Length 10'

Remarks Diorite, dark, f.g. minor fracturing

Assay For W.

NORTHERN MINER PRESS  
Signed J.L.

Mine N. L. Group

Date July 31/23

Hole No. Trench #1

Sample No. **425**

From 250 To 260' N

Sample Length 10'

Remarks as #424

Assay For W.

NORTHERN MINER PRESS  
Signed J.L.

Mine N.L. Group

Date July 31/23

Hole No. Trench #1

Sample No. **426**

From 260 To 290' N

Sample Length 30'

Remarks Diorite, bedrock exposed in few spots only

Assay For W.

NORTHERN MINER PRESS  
Signed J.L.

Mine Nine Lake Group  
Greenland Cr.

Date July 31/23

Hole No. Trench #1

Sample No. **427**

From 290 To 310

Sample Length 20'

Remarks as #426

Assay For W.

NORTHERN MINER PRESS  
Signed J.L.

Mine Nine Lake Group  
Greenland Cr. RL

Date July 31/23

Hole No. Trench #1

Sample No. **428**

From 310 To 330

Sample Length 20

Remarks as #426

Assay For W.

NORTHERN MINER PRESS  
Signed J.L.

Mine Nine Lake Group  
Greenland Cr. RL

Date Aug. 2/23

Hole No. Trench #1

Sample No. **429**

From 330 To 350' N

Sample Length 20'

Remarks Diorite, Much fractg. looks good w/O3. Angular & sub-angular - probably broken bedrock

Assay For W.

NORTHERN MINER PRESS  
Signed J.L.

Mine Nine Lake Group  
Greenland Cr. P.C.

Date Aug. 2/23

Hole No. Trench #1

Sample No. **430**

From 350 To 360' N

Sample Length 10'

Remarks as 330'-350'

Assay For W.

NORTHERN MINER PRESS  
Signed J.L.

Mine Nine Lake

Date Aug. 2/23

Hole No. Trench #1

Sample No. **431**

From 360 To 370' N

Sample Length 10'

Remarks Diorite f.g. dark highly fractg. - bedrock. L. gray, broken bedrock. up to 1/2" angular. looks good w/O3.

Assay For W.

NORTHERN MINER PRESS  
Signed J.L.

Mine New Lake

Date Aug 2/73

Hole No. TRENCH #1

Sample N<sup>o</sup> 432

From 370' To 380' N

Sample Length 10'

Remarks as 360-370'

Assay For W.

NORTHERN MINER PRESS

Signed J.L.

Mine New Lake Group  
Greenland Co., P.C.

Date Aug. 2/73

Hole No. TRENCH #1

Sample N<sup>o</sup> 433

From 380' To 390' N

Sample Length 10'

Remarks as 360-370',  
a few wider zones of  
the 2 1/2" of carbonate  
filling.

Assay For W.

NORTHERN MINER PRESS

Signed J.L.

Mine New Lake

Date Aug. 2/73

Hole No. TRENCH #1

Sample N<sup>o</sup> 434

From 390' To 400' N

Sample Length 10'

Remarks as 370-390'  
but spans mentioned

Assay For W.

NORTHERN MINER PRESS

Signed J.L.

Mine New Lake

Date Aug. 2/73

Hole No. TRENCH #1

Sample N<sup>o</sup> 435

From 400' To 410' N

Sample Length 10'

Remarks as 390-400',  
slightly better looking  
rock.

Assay For W.

NORTHERN MINER PRESS

Signed J.L.

Mine New Lake

Date Aug 2/73

Hole No. TRENCH #1

Sample N<sup>o</sup> 436

From 410' To 420' N

Sample Length 10'

Remarks as 390-400'

Assay For W.

NORTHERN MINER PRESS

Signed J.L.

Mine New Lake

Date Aug 3/73

Hole No. TRENCH #1

Sample N<sup>o</sup> 437

From 420' To 430' N

Sample Length 10'

Remarks as 390-400'

Assay For W.

NORTHERN MINER PRESS

Signed J.L.

Mine New Lake

Date Aug 3/73

Hole No. TRENCH #1

Sample N<sup>o</sup> 438

From 430' To 440' N

Sample Length 10'

Remarks as 390-400'

Assay For W.

NORTHERN MINER PRESS

Signed J.L.

Mine New Lake

Date Aug. 3/73

Hole No. TRENCH #1

Sample N<sup>o</sup> 439

From 440' To 450' N

Sample Length 10'

Remarks Diabase dark, fine-  
grained, 2-4 feet thick  
bedding - Sph. calc. also  
visible. Some rusty part.

Assay For W.

NORTHERN MINER PRESS

Signed J.L.

Mine New Lake

Date Aug. 3/73

Hole No. TRENCH #1

Sample N<sup>o</sup> 440

From 450' To 460' N

Sample Length 10'

Remarks 450-455' Diab  
455-460' BTE

Assay For W.

NORTHERN MINER PRESS

Signed J.L.



Mine New Lake

Date Aug. 3/13

Hole No. Trench #1

Sample N<sup>o</sup> 441

From 460' To 470' N

Sample Length 10'

Remarks atls - light gray  
s. l. ground and reflecting.  
Faded but steel so  
falling.

Assay For W

NORTHERN MINER PRESS

Signed J.L.

Mine New Lake

Date Aug. 3/13

Hole No. Trench #1

Sample N<sup>o</sup> 444

From 490' To 500' N

Sample Length 10'

Remarks as above,  
fractures v. sh. - probably  
near surface.

Assay For W

NORTHERN MINER PRESS

Signed J.L.

Mine New Lake

Date Aug. 3/13

Hole No. Trench #1

Sample N<sup>o</sup> 447

From 500' To 530' N

Sample Length 10'

Remarks 500-510'

Assay For W

NORTHERN MINER PRESS

Signed J.L.

Mine New Lake

Date Aug. 3/13

Hole No. Trench #1

Sample N<sup>o</sup> 442

From 470' To 480' N

Sample Length 10'

Remarks as 460-470'

Assay For W

NORTHERN MINER PRESS

Signed J.L.

Mine New Lake

Date Aug. 3/13

Hole No. Trench #1

Sample N<sup>o</sup> 445

From 500' To 510' N

Sample Length 10'

Remarks as 490-500',  
dirt glts - brown bands  
falling out distinct.

Assay For W

NORTHERN MINER PRESS

Signed J.L.

Mine New Lake

Date Aug. 3/13

Hole No. Trench #1

Sample N<sup>o</sup> 448

From 530' To 540' N

Sample Length 10'

Remarks atls - bedrock?  
lots well sized loose rocks

Assay For W

NORTHERN MINER PRESS

Signed J.L.

Mine New Lake

Date Aug. 3/13

Hole No. Trench #1

Sample N<sup>o</sup> 443

From 480' To 490' N

Sample Length 10'

Remarks as 460-470'

Assay For W

NORTHERN MINER PRESS

Signed J.L.

Mine New Lake

Date Aug. 3/13

Hole No. Trench #1

Sample N<sup>o</sup> 446

From 510' To 520' N

Sample Length 10'

Remarks as 510-510'

Assay For W

NORTHERN MINER PRESS

Signed J.L.

Mine New Lake

Date Aug. 3/13

Hole No. Trench #1

Sample N<sup>o</sup> 449

From 590' To 600' N

Sample Length 20'

Remarks atls, dark, ridge  
rounded by glacial action.  
hungry looking.

Assay For W

NORTHERN MINER PRESS

Signed J.L.

540-580 - o.b. ? Not  
sampled.

Mine NINE LAKE  
Date Aug. 3/13  
Hole No. TRENCH #1  
Sample N<sup>o</sup> 450  
600-640 talus, no bedrocks  
From 640' To 660' N  
Sample Length 20'  
Remarks O.C. located 25-30'  
east of E. Henry  
looking plate.  
Assay For W.  
NORTHERN MINER PRESS  
Signed J.L.

Mine NINE LAKE  
Date Aug. 5/13  
Hole No. TRENCH #2  
Sample N<sup>o</sup> 451  
From 0' To 10'  
Sample Length 10'  
Remarks Clay dipping to south  
massive. Partly broken  
light, sandy, 1' thick  
Assay For W.  
NORTHERN MINER PRESS  
Signed J.L.

Mine NINE LAKE  
Date Aug. 5/13  
Hole No. TRENCH #2  
Sample N<sup>o</sup> 452  
From 0' To 20' S  
Sample Length 10'  
Remarks as 451  
Assay For W.  
NORTHERN MINER PRESS  
Signed J.L.

Mine NINE LAKE  
Date Aug. 5/13  
Hole No. TRENCH #2  
Sample N<sup>o</sup> 453  
From 20' To 30' S  
Sample Length 10'  
Remarks as 452  
Assay For W.  
NORTHERN MINER PRESS  
Signed J.L.

Mine NINE LAKE  
Date Aug. 5/13  
Hole No. TRENCH #2  
Sample N<sup>o</sup> 454  
From 20' To 40' S  
Sample Length 10'  
Remarks Clay dipping to south  
massive, 1' thick, sandy  
light, sandy, 1' thick  
Assay For W.  
NORTHERN MINER PRESS  
Signed J.L.

Mine NINE LAKE  
Date Aug. 6/13  
Hole No. TRENCH #2  
Sample N<sup>o</sup> 455  
From 40' To 50' S  
Sample Length 10'  
Remarks as 454  
Assay For W.  
NORTHERN MINER PRESS  
Signed J.L.

Mine NINE LAKE  
Date Aug. 6/13  
Hole No. TRENCH #2  
Sample N<sup>o</sup> 456  
From 50' To 60' S  
Sample Length 10'  
Remarks as 455  
Assay For W.  
NORTHERN MINER PRESS  
Signed J.L.

Mine NINE LAKE  
Date Aug. 6/13  
Hole No. TRENCH #2  
Sample N<sup>o</sup> 457  
From 60' To 70' S  
Sample Length 10'  
Remarks Clay as 456  
Assay For W.  
NORTHERN MINER PRESS  
Signed J.L.

Mine NINE LAKE  
Date Aug. 6/13  
Hole No. TRENCH #2  
Sample N<sup>o</sup> 458  
From 70' To 80' S  
Sample Length 10'  
Remarks Clay as 457  
Assay For W.  
NORTHERN MINER PRESS  
Signed J.L.



Mine NINE LAKE

Date Aug 6/23

Hole No. TRENCH #2

Sample N<sup>o</sup> 459

100-90' c.a.

From 90' To 100's

Sample Length 10'

Remarks Blk on 30-40's

Assay For W

NORTHERN MINER PRESS

Signed J.L.

Mine NINE LAKE

Date Aug. 6/23

Hole No. TRENCH #2

Sample N<sup>o</sup> 460

From 100' To 110's

Sample Length 10'

Remarks Blk on 30-40's

Assay For W

NORTHERN MINER PRESS

Signed J.L.

Mine NINE LAKE

Date Aug. 6/23

Hole No. TRENCH #2

Sample N<sup>o</sup> 461

From 110' To 120's

Sample Length 10'

Remarks Light to mid gray blk. only fracture probably due to water surface.

Assay For W

NORTHERN MINER PRESS

Signed J.L.

Mine NINE LAKE

Date Aug. 6/23

Hole No. TRENCH #2

Sample N<sup>o</sup> 462

From 120' To 130's

Sample Length 10'

Remarks Blk on 10-20

Assay For W

NORTHERN MINER PRESS

Signed J.L.

Mine NINE LAKE

Date Aug. 6/23

Hole No. TRENCH #2

Sample N<sup>o</sup> 463

From 130' To 140's

Sample Length 10'

Remarks on 110-120'

Assay For W

NORTHERN MINER PRESS

Signed J.L.

Mine NINE LAKE

Date Aug. 6/23

Hole No. TRENCH #2

Sample N<sup>o</sup> 464

From 140' To 150's

Sample Length 10'

Remarks Blk on 10-20's

Assay For W

NORTHERN MINER PRESS

Signed J.L.

Mine NINE LAKE

Date Aug. 6/23

Hole No. TRENCH #2

Sample N<sup>o</sup> 465

From 150' To 160's

Sample Length 10'

Remarks Blk on 10-20's

Assay For W

NORTHERN MINER PRESS

Signed J.L.

Mine NINE LAKE

Date Aug 6/23

Hole No. TRENCH #2

Sample N<sup>o</sup> 466

From 160' To 170's

Sample Length 10'

Remarks blk on 10-20's

Assay For W

NORTHERN MINER PRESS

Signed J.L.

Mine NINE LAKE

Date Aug 6/23

Hole No. TRENCH #2

Sample N<sup>o</sup> 467

From 170' To 180's

Sample Length 10'

Remarks blk on 10-20's

Assay For W

NORTHERN MINER PRESS

Signed J.L.

Mine New Lane

Date Aug 6/23

Hole No. TRENCH #2

Sample N<sup>o</sup> 468

From 180 To 190's

Sample Length 10'

Remarks Blk. on 11-120's

Assay For W.

NORTHERN MINER PRESS

Signed J.L.

Mine New Lane

Date Aug 6/23

Hole No. TRENCH #2

Sample N<sup>o</sup> 469

From 190 To 200's

Sample Length 10'

Remarks Blk. on 10-120'

Assay For W.

NORTHERN MINER PRESS

Signed J.L.

Mine New Lane

Date Aug 7/23

Hole No. TRENCH #2

Sample N<sup>o</sup> 470

From 200' To 210's

Sample Length 10'

Remarks Blk. on 11-120's

Assay For W.

NORTHERN MINER PRESS

Signed J.L.

Mine New Lane

Date Aug 7/23

Hole No. TRENCH #2

Sample N<sup>o</sup> 471

From 210' To 220's

Sample Length 10'

Remarks Blk. on 10-120'

Assay For W.

NORTHERN MINER PRESS

Signed J.L.

Mine New Lane

Date Aug 7/23

Hole No. TRENCH #2

Sample N<sup>o</sup> 472

From 220' To 230's

Sample Length 10'

Remarks Blk. on 10-120'

Assay For W.

NORTHERN MINER PRESS

Signed J.L.

Mine New Lane

Date Aug 7/23

Hole No. TRENCH #2

Sample N<sup>o</sup> 473

From 230' To 240's

Sample Length 10'

Remarks Blk. on 10-120's

Assay For W.

NORTHERN MINER PRESS

Signed J.L.

Mine New Lane

Date Aug 7/23

Hole No. TRENCH #2

Sample N<sup>o</sup> 474

From 240' To 250's

Sample Length 10'

Remarks Blk. on 10-120'

Assay For W.

NORTHERN MINER PRESS

Signed J.L.

Mine New Lane

Date Aug 7/23

Hole No. TRENCH #2

Sample N<sup>o</sup> 475

From 250 To 260's

Sample Length 10'

Remarks Blk. on 10-120's

Assay For W.

NORTHERN MINER PRESS

Signed J.L.

Mine New Lane

Date Aug 7/23

Hole No. TRENCH #2

Sample N<sup>o</sup> 476

From 260' To 270's

Sample Length 10'

Remarks Blk. on 10-120's

Assay For W.

NORTHERN MINER PRESS

Signed J.L.



Mine Nine Lake

Date Aug 7/13

Hole No. Shank #2

Sample N<sup>o</sup> 477

From 270 To 280's

Sample Length 10'

Remarks blt as per.

Assay For W

NORTHERN MINER PRESS

Signed JL

Mine Nine Lake

Date Aug 7/13

Hole No. Shank #2

Sample N<sup>o</sup> 478

From 270 To 280's

Sample Length 10'

Remarks blt as per.

Assay For W

NORTHERN MINER PRESS

Signed JL

Mine Nine Lake

Date Aug 7/13

Hole No. Shank #2

Sample N<sup>o</sup> 479

From 270 To 280's

Sample Length 10'

Remarks blt as per.

Assay For W

NORTHERN MINER PRESS

Signed JL

Mine Nine Lake

Date Aug 7/13

Hole No. Shank #2

Sample N<sup>o</sup> 480

From 300 To 310's

Sample Length 10'

Remarks blt as per.

Assay For W

NORTHERN MINER PRESS

Signed JL

Mine Nine Lake

Date Aug 7/13

Hole No. Shank #2

Sample N<sup>o</sup> 481

From 310 To 320's

Sample Length 10'

Remarks blt as per.

Assay For W

NORTHERN MINER PRESS

Signed JL

Mine Nine Lake

Date Aug 7/13

Hole No. Shank #2

Sample N<sup>o</sup> 482

From 300 To 330's

Sample Length 10'

Remarks blt as per.

Assay For W

NORTHERN MINER PRESS

Signed JL

Mine Nine Lake

Date Aug 7/13

Hole No. Shank #2

Sample N<sup>o</sup> 483

From 330 To 340's

Sample Length 10'

Remarks blt as per.

Assay For W

NORTHERN MINER PRESS

Signed JL

Mine Nine Lake

Date Aug 7/13

Hole No. Shank #2

Sample N<sup>o</sup> 484

From 340 To 350's

Sample Length 10'

Remarks blt as per.

Assay For W

NORTHERN MINER PRESS

Signed JL

Mine Nine Lake

Date Aug 7/13

Hole No. Shank #2

Sample N<sup>o</sup> 485

From 350 To 360's

Sample Length 10'

Remarks blt as per.

Assay For W

NORTHERN MINER PRESS

Signed JL



Mine Nine Lake

Date Aug 7/73

Hole No. Trench #2

Sample N<sup>o</sup> 486

From 36' To 38'

Sample Length 10'

Remarks slt as spec

Assay For W

NORTHERN MINER PRESS

Signed JL

Mine Nine Lake

Date Aug 7/73

Hole No. Trench #2

Sample N<sup>o</sup> 487

From 37' To 48'

Sample Length 10'

Remarks slt as spec

Assay For W

NORTHERN MINER PRESS

Signed JL

Mine Nine Lake

Date Aug 7/73

Hole No. Trench #2

Sample N<sup>o</sup> 488

From 38' To 48.5'

Sample Length 10'

Remarks slt as spec

Assay For W

NORTHERN MINER PRESS

Signed JL

Mine Nine Lake

Date Aug 7/73

Hole No. Trench #2

Sample N<sup>o</sup> 489

From 40' To 45'

Sample Length 15'

Remarks slt as spec

Assay For W

NORTHERN MINER PRESS

Signed JL

NINE LAKE GROUP  
82F-16  
TRENCH SAMPLING CHITS

TRENCH No. 2 (North)

CHIT Nos. 490-499 ind.  
800-820 ind.

for Vanc. file  
1973 TRENCHING (+ SAMPLING)

Mine Nine Lake Op.

Greenland B.C.

Date Aug 11/73

Hole No. Trench #2

Sample N<sup>o</sup> 490

0'-53" N not trenched.

From 53" N To 63" N

Sample Length 10"

Remarks GT 2T light grey  
well fract'd with  
fractures.

Assay For W

NORTHERN MINER PRESS

Signed JL

Mine Nine Lake Op.

Greenland B.C.

Date Aug 11/73

Hole No. Trench #2

Sample N<sup>o</sup> 491

From 63" N To 73" N

Sample Length 10'

Remarks Diapite dark fig.  
5 fracture planes  
Varying fraction of 1" to 1/4"  
apert. - or 6"-8" apart, fract  
right mainly

Assay For W

NORTHERN MINER PRESS

Signed JL

Mine Nine Lakes Op.

Greenland B.C.

Date Aug 11/73

Hole No. Trench #2

Sample N<sup>o</sup> 492

From 73" N To 83" N

Sample Length 10'

Remarks at 63"-73"  
fractures seen

Assay For W

NORTHERN MINER PRESS

Signed JL

Mine Nine Lake Op.

Greenland B.C.

Date Aug 11/73

Hole No. Trench #2

Sample N<sup>o</sup> 493

From 83" N To 93" N

Sample Length 10'

Remarks at 73"-83" N

Assay For W

NORTHERN MINER PRESS

Signed JL

Mine Nine Lake ~~OP~~  
Greenland B.C.  
Date Aug 11/73  
Hole No. Trench #2

Sample N<sup>o</sup> 494

From 93' To 103'N  
Sample Length 10'  
Remarks as 73'-83'

Assay For W  
NORTHERN MINER PRESS  
Signed FE

Mine Nine Lake ~~OP~~  
Greenland B.C.  
Date Aug 11/73  
Hole No. Trench #2

Sample N<sup>o</sup> 495

From 103' To 113'N  
Sample Length 10'  
Remarks Diorite as  
73'N-83'N

Assay For W  
NORTHERN MINER PRESS  
Signed FE

Mine Nine Lake ~~OP~~  
Greenland B.C.  
Date Aug 11/73  
Hole No. Trench #2

Sample N<sup>o</sup> 496

From 113' To 123'N  
Sample Length 10'  
Remarks Dior. as  
73'm-83'm

Assay For W  
NORTHERN MINER PRESS  
Signed FE

Mine Nine Lake ~~OP~~  
Greenland B.C.  
Date Aug 11/73  
Hole No. Trench #2

Sample N<sup>o</sup> 497

From 123' To 133'N  
Sample Length 10'  
Remarks Dior. as. 73'm-  
83'm.

Assay For W  
NORTHERN MINER PRESS  
Signed FE

Mine Nine Lake ~~OP~~  
Greenland B.C.  
Date Aug 11/73  
Hole No. Trench #2

Sample N<sup>o</sup> 498

From 133' To 143'N  
Sample Length 10'  
Remarks Dior. as 73'N  
83'N

Assay For W  
NORTHERN MINER PRESS  
Signed FE

Mine Nine Lake ~~OP~~  
Greenland B.C.  
Date Aug 11/73  
Hole No. Trench #2

Sample N<sup>o</sup> 499

From 143' To 154'N  
Sample Length 11'  
Remarks Dior. as 73'N  
83'N

Assay For W  
NORTHERN MINER PRESS  
Signed FE

Mine Nine Lake ~~OP~~  
Greenland B.C.  
Date Aug 13/73  
Hole No. Trench #2

Sample N<sup>o</sup> 800

(154'-174' not trenched.)  
From 174' To 184'N  
Sample Length 10'  
Remarks Dior. dark  
1/2' of well fract'd  
and tight.

Assay For W  
NORTHERN MINER PRESS  
Signed FE

Mine Nine Lake ~~OP~~  
Greenland B.C.  
Date Aug 13/73  
Hole No. Trench #2

Sample N<sup>o</sup> 801

From 184' To 194'N  
Sample Length 10'  
Remarks as 174'-184'

Assay For W  
NORTHERN MINER PRESS  
Signed FE

Mine Nine Lake ~~OP~~  
Greenland B.C.  
Date Aug 13/73  
Hole No. Trench #2

Sample N<sup>o</sup> 802

From 194' To 204'N  
Sample Length 10'  
Remarks as 174'-184'

Assay For W  
NORTHERN MINER PRESS  
Signed FE



Mine Nine Lake GP.  
Greenlark B.C.  
Date Aug 13/73.  
Hole No. Trench #2

Sample N<sup>o</sup> 803

From 204' To 214'  
Sample Length 10'  
Remarks as 174-184

Assay For W  
NORTHERN MINER PRESS  
Signed FE

Mine Nine Lake GP.  
Greenlark B.C.  
Date Aug 13/73.  
Hole No. Trench #2

Sample N<sup>o</sup> 804

From 214' To 224'  
Sample Length 10'  
Remarks as 174-184

Assay For W  
NORTHERN MINER PRESS  
Signed FE

Mine Nine Lake GP.  
Greenlark B.C.  
Date Aug 13/73.  
Hole No. Trench #2

Sample N<sup>o</sup> 805

From 224' To 234'  
Sample Length 10'  
Remarks as 174-184

Assay For W  
NORTHERN MINER PRESS  
Signed FE

Mine Nine Lake GP.  
Greenlark B.C.  
Date Aug 13/73.  
Hole No. Trench #2

Sample N<sup>o</sup> 806

From 234' To 244'  
Sample Length 10'  
Remarks as 174-184  
but less fracturing

Assay For W  
NORTHERN MINER PRESS  
Signed FE

Mine Nine Lake GP.  
Greenlark B.C.  
Date Aug 13/73.  
Hole No. Trench #2

Sample N<sup>o</sup> 807

From 244' To 254'  
Sample Length 10'  
Remarks Diorite as  
234-244'

Assay For W  
NORTHERN MINER PRESS  
Signed FE

Mine Nine Lake GP.  
Greenlark B.C.  
Date Aug 13/73.  
Hole No. Trench #2

Sample N<sup>o</sup> 808

From 254' To 264'  
Sample Length 10'  
Remarks as 234-244'

Assay For W  
NORTHERN MINER PRESS  
Signed FE

Mine Nine Lake GP.  
Greenlark B.C.  
Date Aug 13/73.  
Hole No. Trench #2

Sample N<sup>o</sup> 809

From 264' To 274'  
Sample Length 10'  
Remarks as 234-244'

Assay For W  
NORTHERN MINER PRESS  
Signed FE

Mine Nine Lake GP.  
Greenlark B.C.  
Date Aug 13/73.  
Hole No. Trench #2

Sample N<sup>o</sup> 810

From 274' To 284'  
Sample Length 10'  
Remarks as 234-244'  
weak fracturing

Assay For W  
NORTHERN MINER PRESS  
Signed FE

Mine Nine Lake GP.  
Greenlark B.C.  
Date Aug 13/73.  
Hole No. Trench #2

Sample N<sup>o</sup> 811

From 284' To 294'  
Sample Length 10'  
Remarks as 174-184

Assay For W  
NORTHERN MINER PRESS  
Signed FE

Mine Nine Lake GP.  
Greenlark B.C.  
Date Aug 13/73  
Hole No. Trench #2

Sample N<sup>o</sup> 812

From 294' To 304'N  
Sample Length 10'  
Remarks as 174-184'N

Assay For W  
NORTHERN MINER PRESS  
Signed FE

Mine Nine Lake GP.  
Greenlark B.C.  
Date Aug 13/73  
Hole No. Trench #2

Sample N<sup>o</sup> 813

From 304' To 314'N  
Sample Length 10'  
Remarks as 174-184'N

Assay For W  
NORTHERN MINER PRESS  
Signed FE

Mine Nine Lake GP.  
Greenlark B.C.  
Date Aug 13/73  
Hole No. Trench #2

Sample N<sup>o</sup> 814

From 314' To 324'N  
Sample Length 10'  
Remarks Dirite ~~ass~~  
fract'd

Assay For W  
NORTHERN MINER PRESS  
Signed FE

Mine Nine Lake GP.  
Greenlark B.C.  
Date Aug 13/73  
Hole No. Trench #2

Sample N<sup>o</sup> 815

From 324' To 334'N  
Sample Length 10'  
Remarks as 174'N-184'N

Assay For W  
NORTHERN MINER PRESS  
Signed FE

Mine Nine Lake GP.  
Greenlark B.C.  
Date Aug 13/73  
Hole No. Trench #2

Sample N<sup>o</sup> 816

From 334' To 344'N  
Sample Length 10'  
Remarks as 174-184'N

Assay For W  
NORTHERN MINER PRESS  
Signed FE

Mine Nine Lake GP.  
Greenlark B.C.  
Date Aug 13/73  
Hole No. Greenlark #2

Sample N<sup>o</sup> 817

From 344' To 354'N  
Sample Length 10'  
Remarks as 174'N-184'N

Assay For W  
NORTHERN MINER PRESS  
Signed FE

Mine Nine Lake GP.  
Greenlark B.C.  
Date Aug 13/73  
Hole No. Trench #2

Sample N<sup>o</sup> 818

From 354' To 364'N  
Sample Length 10'  
Remarks as 314-324'N

Assay For W  
NORTHERN MINER PRESS  
Signed FE

Mine Nine Lake GP.  
Greenlark B.C.  
Date Aug 13/73  
Hole No. Trench #2

Sample N<sup>o</sup> 819

From 364' To 374'N  
Sample Length 10'  
Remarks as 314-324'N

Assay For W  
NORTHERN MINER PRESS  
Signed FE

Mine Nine Lake GP.  
Greenlark B.C.  
Date Aug 13/73  
Hole No. Trench #2

Sample N<sup>o</sup> 820

From 374' To 389'N  
Sample Length 15'  
Remarks as 174-184'N

Assay For W  
NORTHERN MINER PRESS  
Signed FE



NINE LAKE GROUP  
82F-16  
OUTCROP  
TRENCH SAMPLING CHITS

Lines 31-32 / 47 NW  
FAULT CONTACT

CHIT Nos. 821-827 incl.

for Vanc. file  
1973 TRANCHING.

Mine Nine Lake Group  
82F-16  
Date Aug 14/73  
Hole No. Line 31-32 (47 NW)  
Fault Contact

Sample N<sup>o</sup> 821

From 0' To 10' S  
Sample Length 10'  
Remarks Diorite - fine-grained,  
well fract'd. thin line to  
1/2" seams. West bank  
of creek. East bank of gate.  
Assay For W.

NORTHERN MINER PRESS  
Signed J.L.

Mine Nine Lake Group  
Date Aug 14/73  
Hole No. Line 31-32 (47 NW)  
Fault Contact

Sample N<sup>o</sup> 822

From 10'S To 20'S  
Sample Length 10'  
Remarks as 0'-10'S.

Assay For W.  
NORTHERN MINER PRESS  
Signed J.L.

Mine Nine Lake Group  
Date 8/14/73  
Hole No. Line 31-32 (47 NW)  
Fault Contact

Sample N<sup>o</sup> 823

From 20'S To 30'S  
Sample Length 10'  
Remarks as 0'-10'S

Assay For W.  
NORTHERN MINER PRESS  
Signed J.L.

Mine Nine Lake Grp  
Date 8/14/73  
Hole No. Line 31-32 (47 NW)  
Fault Contact

Sample N<sup>o</sup> 824

From 30'S To 35'S  
Sample Length 5'  
Remarks 0-10'S

Assay For W.  
NORTHERN MINER PRESS  
Signed J.L.

Mine Nine Lake Group  
Date 8/14/73  
Hole No. Line 31-32 (47 NW)  
Fault Contact

Sample N<sup>o</sup> 825

From 35'S To 52'S  
Sample Length 17'  
Remarks Dior. as 0-10'S  
Probable broken bedrock

Assay For W.  
NORTHERN MINER PRESS  
Signed J.L.

Mine Nine Lake Group  
Date 8/14/73  
Hole No. Line 31-32 (47 NW)  
Fault Contact

Sample N<sup>o</sup> 826

From 52'S To 65'S  
Sample Length 13'  
Remarks Dior. as 0'-10'S

Assay For W.  
NORTHERN MINER PRESS  
Signed J.L.

Mine Nine Lake Group  
Date Aug 14/73  
Hole No. Line 31-32 (47 NW)  
Fault Contact

Sample N<sup>o</sup> 827

From \_\_\_\_\_ To \_\_\_\_\_  
Sample Length \_\_\_\_\_  
Remarks \_\_\_\_\_

Assay For W.  
NORTHERN MINER PRESS  
Signed J.L.

NINE LAKE GROUP  
82F-16  
TRENCH SAMPLING CHITS

TEST PITS ON LINE 26  
PIT Nos. 3-9 incl.  
CHIT Nos. 828-834

for Vanc. file

Mine Nine Lake Group

Date 8/15/73

Hole No. PA #6  
L26/50+45' NW and E  
offset 5' SW.

Sample **N<sup>o</sup> 828**

From NW To SE of R

Sample Length 12' NW-SE

Remarks Dior. med-grained.  
well fractured. 1/2" to  
hair-line seams.

Assay For W

NORTHERN MINER PRESS

Signed FL

Mine Nine Lake Group

Date 8/15/73

Hole No. PA #5  
L26/49+50' NW and E offset  
85' to SW.

Sample **N<sup>o</sup> 829**

From NW To SE of R

Sample Length 12' NW-SE

Remarks Dior. Med-fine  
grained, dark, Mod.  
fract'd.

Assay For W

NORTHERN MINER PRESS

Signed FL

Mine Nine Lake Group

Date 8/15/73

Hole No. PA #7  
L26/51+70' NW

Sample **N<sup>o</sup> 830**

From NW To SE

Sample Length 14'

Remarks Diorite. Coarse +  
med. grained. Mod.  
fract'g.

Assay For W

NORTHERN MINER PRESS

Signed FL

Mine Nine Lakes Gp.  
Kerr Addison

Date Aug 16/73.

Hole No. Pit #3  
L26/47+15 NW  
and E offset 5' SW

Sample **N<sup>o</sup> 831**

From  To

Sample Length 14' NW-SE

Remarks Diorite Dark  
Med to fine gr. Well  
fractured. Hairline  
to 3/8".

Assay For W

NORTHERN MINER PRESS

Signed FL

Mine Nine Lake Gp.  
Kerr Addison

Date Aug 16/73.

Hole No. Pit #4  
L26/45+45' NW and E  
offset 65' SW.

Sample **N<sup>o</sup> 832**

From  To

Sample Length 11' NW-SE

Remarks Diorite Med. fine  
Coarse Graining Well fract-  
ured. Hairline to 1/4".

Assay For W

NORTHERN MINER PRESS

Signed FL

Mine Nine Lake Gp.  
Kerr Addison

Date Aug 16/73.

Hole No. Pit #9 (PA#8)  
L26/45+60' NW and  
E offset 10' NE

Sample **N<sup>o</sup> 833**

From NW To SE of R

Sample Length 12' NW-SE  
15' NE-SW

Remarks DIORITE MED.  
GR. DARK MOD. FRAC-  
TURED. FRACTURE NOT  
TIGHT.

Assay For W

NORTHERN MINER PRESS

Signed FL

Mine Nine Lake Gp.  
Kerr Addison

Date Aug 16/73.

Hole No. Pit #9 (PA#9)  
L26/46+25' NW and E  
offset 10' NE.

Sample **N<sup>o</sup> 834**

From NW To SE

Sample Length 13' NW-SE  
10' NE-SW

Remarks Diorite Med.  
Grain dark. Not ex-  
fractured AS PIT #7  
It looks weak.

Assay For W

NORTHERN MINER PRESS

Signed FL

NINE LAKE GROUP  
82F-6

TRENCH No. 3

CHIT Nos. 835 + 836

for clar. file  
1973 trenching (S. L. ...)

Mine Nine Lake Gp.  
Kerr Addison

Date Aug 18/73.

Hole No. Trench #3

Sample **N<sup>o</sup> 835**

From 0' N To 39' N

Sample Length 39' NW

Remarks QUARTZITE  
LIGHT GREY.  
No fracture. Burren.

Assay For W

NORTHERN MINER PRESS

Signed FL



Mine Nine Lake G.P.  
Kerr Addison  
Date Aug 19/73  
Hole No. TRENCH #3

Sample No 836

From 39' N To 78' N  
Sample Length 39' NW  
Remarks NO # 835

Assay For W  
NORTHERN MINER PRESS  
Signed [Signature]

Mine NINE LAKE G.P.  
KERR ADDISON  
Date AUG. 18/73  
Hole No. TRENCH #2(N)

Sample No 838

From 405' To 415' N  
Sample Length 10'  
Remarks SAME AS 837

Assay For W  
NORTHERN MINER PRESS  
Signed [Signature]

NINE LAKE GROUP  
82F-16

TRENCH #5

Nos. 841-852 incl.

for Venn. file  
1973 TRAILING & SAMPLING

NINE LAKE GROUP  
82F-16

TRENCH #2 NORTH

Nos. 837-840 incl.

for Venn. file  
1973 TRAILING & SAMPLING

Mine NINE LAKE G.P.  
KERR ADDISON  
Date AUG 18/73  
Hole No. TRENCH #2(N)

Sample No 839

From 415' To 425' N  
Sample Length 10'  
Remarks SAME AS 837

Assay For W  
NORTHERN MINER PRESS  
Signed [Signature]

Mine NINE LAKE GROUP  
KERR ADDISON  
Date AUG 18/73  
Hole No. TRENCH #5

Sample No 841

From 0'S To 20'S  
Sample Length 20'  
Remarks MEDIUM TO COARSE GRAINED DIORITE. MODERATELY FRACTURED. 1" WIDE FRACTURE

Assay For W  
NORTHERN MINER PRESS  
Signed [Signature]

Mine NINE LAKE G.P.  
KERR ADDISON  
Date AUG 18/73  
Hole No. TRENCH #2(N)

Sample No 837

From 395' N To 405' N  
Sample Length 10'  
Remarks DIORITE MEDIUM TO FINE GRAIN. MOD. TO COARSELY FRACTURED. MOD. TO COARSE. MIN. FRACTURED HAIRLINE 50%

Assay For W  
NORTHERN MINER PRESS  
Signed [Signature]

Mine NINE LAKE G.P.  
KERR ADDISON  
Date AUG 18/73  
Hole No. TR. #2(N)

Sample No 840

From 425' To 429' N  
Sample Length 4' 4"  
Remarks SAME AS 837

Assay For W  
NORTHERN MINER PRESS  
Signed [Signature]

Mine NINE LAKE G.P.  
KERR ADDISON  
Date AUG 18/73  
Hole No. TRENCH #5

Sample No 842

From 20'S To 40'S  
Sample Length 20'  
Remarks SAME AS 841. EXCEPT 1" WIDE FRACTURE AT 34'S 3' WIDE BULL QUARTZ VEIN

Assay For W  
NORTHERN MINER PRESS  
Signed [Signature]

Mine NINE LAKE GP.  
KERR ADDISON

Date AUG 18/73.  
Hole No. TRENCH #5

Sample N<sup>o</sup> 843

From 40'S To 60'S  
Sample Length 20'S  
Remarks SAME AS  
841

Assay For W  
NORTHERN MINER PRESS  
Signed JG

Mine NINE LAKE GP.  
KERR ADDISON

Date AUG. 18/73  
Hole No. TRENCH #5

NO  
Sample N<sup>o</sup> 844

From 60'S To 95'S  
Sample Length 20'S  
Remarks 0.3  
BED ROCK DOUBTFUL

Assay For W  
NORTHERN MINER PRESS  
Signed JG

Mine NINE LAKES GP.  
KERR ADDISON

Date AUG 18/73.  
Hole No. TRENCH #5

Sample N<sup>o</sup> 845

From 95'S To 115'S  
Sample Length 20'S  
Remarks COARSE TO MED.  
GRAIN. DARK DIORITE POORLY  
FRACTURE HAIRLINE TO

Assay For W  
NORTHERN MINER PRESS  
Signed JG

Mine NINE LAKE GP.  
KERR ADDISON  
Date AUG 18/73.  
Hole No. TRENCH #5

Sample N<sup>o</sup> 847

From 115'S To 135'S  
Sample Length 20'  
Remarks MED. TO  
C. G. MOD.  
FRACTURED

Assay For W  
NORTHERN MINER PRESS  
Signed JG

Mine NINE LAKE GP.  
KERR ADDISON  
Date AUG. 18/73.  
Hole No. TR. #5

Sample N<sup>o</sup> 848

From 135'S To 155'S  
Sample Length 20'  
Remarks FINETO MED.  
GRAIN, DARK POORLY  
FRACTURED DIORITE

Assay For W  
NORTHERN MINER PRESS  
Signed JG

Mine NINE LAKES GR.  
KERR ADDISON  
Date AUG 18/73.  
Hole No. TRENCH #5

Sample N<sup>o</sup> 849

From 155'S To 175'S  
Sample Length 20'  
Remarks COARSE GREEN  
DIORITE. MOD  
FRACTURED HAIRLINE  
TO 1/8"

Assay For W  
NORTHERN MINER PRESS  
Signed JG

Mine NINE LAKE GP.  
KERR ADDISON  
Date AUG 18/73.  
Hole No. TRENCH #5

Sample N<sup>o</sup> 850

From 175'S To 195'S  
Sample Length 20'  
Remarks COARSE GRAIN.  
ED. MOD. FRACTURED.  
DIORITE 1/2" FRACTURE

Assay For W  
NORTHERN MINER PRESS  
Signed JG

Mine NINE LAKE GP.  
KERR ADDISON  
Date AUG 18/73.  
Hole No. TRENCH #5

Sample N<sup>o</sup> 851

From 195'S To 215'S  
Sample Length 20'  
Remarks COARSE GRAINED  
DIORITE. MOD. FRAC  
TURED. HAIRLINE  
TO 1/8"

Assay For W  
NORTHERN MINER PRESS  
Signed JG

Mine NINE LAKE GP.  
KERR ADDISON  
Date AUG 18/73.  
Hole No. TRENCH #5

Sample N<sup>o</sup> 852

From 215'S To 235'S  
Sample Length 20'  
Remarks MED. TO V.C.  
G. DIORITE.  
POORLY FRACTURED

Assay For W  
NORTHERN MINER PRESS  
Signed JG



NINE LAKE GROUP  
82F-16

TRENCH #6

Nos. 853-867 incl.

for Univ. Files

1973 Trenching (Sampling)

Mine ~~KERR~~ NINE LAKE GP.  
KERR ADDISON

Date Aug. 19/73

Hole No. TRENCH #6

Sample N<sup>o</sup> 853

From 30'S To 50'S

Sample Length 20'

Remarks Med to fine  
Dark Diorite Frac  
Turning TIGHT

Assay For W

NORTHERN MINER PRESS

Signed JH

Mine NINE LAKE GP.  
KERR ADDISON

Date Aug. 19/73

Hole No. TRENCH #6

Sample N<sup>o</sup> 854

From 50'S To 70'S

Sample Length 20'

Remarks FINE to MED.  
GRAIN. Poorly Fract-  
ured Diorite.

Assay For W

NORTHERN MINER PRESS

Signed JH

Mine NINE LAKE GP.  
KERR ADDISON

Date Aug. 19/73

Hole No. TRENCH #6

Sample N<sup>o</sup> 855

From 70'S To 90'S

Sample Length 20'

Remarks Fine grained, with  
some Med. grained  
Diorite. Fractures  
widely spaced.

Assay For W

NORTHERN MINER PRESS

Signed JH

Mine NINE LAKE GP.  
KERR ADDISON

Date Aug. 19/73

Hole No. TRENCH #6

Sample N<sup>o</sup> 856

From 90'S To 110'S

Sample Length 20'

Remarks Diorite Dark med.  
to fine. Poorly fractur-  
ed

Assay For W

NORTHERN MINER PRESS

Signed JH

Mine Nine Lake GP.  
Kerr Addison

Date Aug 19/73

Hole No. Trench #6

Sample N<sup>o</sup> 857

From 110'S To 130'S

Sample Length 20'

Remarks Fine to med.  
Grain Diorite. Poorly  
fractured.

Assay For W

NORTHERN MINER PRESS

Signed JH

Mine Nine Lake GP.  
Kerr Addison

Date Aug 19/73

Hole No. Trench #6

Sample N<sup>o</sup> 858

From 130'S To 150'S

Sample Length 20'

Remarks Diorite Dark  
to Fine gr. Mod  
fractured. Hairline  
up to 1/8"

Assay For W

NORTHERN MINER PRESS

Signed JH

Mine Nine Lake GP.  
Kerr Addison

Date Aug 19/73

Hole No. Trench #6

Sample N<sup>o</sup> 859

From 150'S To 170'S

Sample Length 20'

Remarks Fine to Med.  
Grain Diorite. Mod.  
fractured. Hairline  
to 1/8"

Assay For W

NORTHERN MINER PRESS

Signed JH

Mine Nine Lake GP.  
Kerr Addison

Date Aug 19/73

Hole No. Trench #6

Sample N<sup>o</sup> 860

From 170'S To 190'S

Sample Length 20'

Remarks Fine gr. Dark  
Diorite. Hairline  
to 1/4" Fracture

Assay For W

NORTHERN MINER PRESS

Signed JH

Mine Nine Lakes Exp.  
Ferr Addison  
Date Aug. 19/73.  
Hole No. Trench #6

Sample N<sup>o</sup> 861

From 190'S To 210'S  
Sample Length 20'  
Remarks Diorite Dark  
& fine, mod.  
Fractured light

Assay For W  
NORTHERN MINER PRESS  
Signed JL

Mine Nine Lakes Exp.  
Ferr Addison  
Date Aug 19/73.  
Hole No. Trench #6

Sample N<sup>o</sup> 862

From 210'S To 230'S  
Sample Length 20'  
Remarks Same as  
190'S to 210'S

Assay For W  
NORTHERN MINER PRESS  
Signed JL

Mine Nine Lakes Exp.  
Ferr Addison  
Date Aug 19/73.  
Hole No. Trench #6

Sample N<sup>o</sup> 863

From 230'S To 250'S  
Sample Length 20'  
Remarks Diorite dark  
fine, mod. to well  
fract'd. Hairline  
to 1/2". Many Colours.

Assay For W  
NORTHERN MINER PRESS  
Signed JL

Mine Nine Lakes Exp.  
Ferr Addison  
Date Aug 19/73.  
Hole No. Trench #6

Sample N<sup>o</sup> 864

From 250'S To 270'S  
Sample Length 20'  
Remarks Fine gr. Dark  
Diorites + mod.  
Fractured. Hairline  
to 1/2" Fractures.

Assay For W  
NORTHERN MINER PRESS  
Signed JL

Mine Nine Lakes Exp.  
Ferr Addison  
Date Aug 19/73  
Hole No. Trench #6

Sample N<sup>o</sup> 865

From 290'S To 290'S  
Sample Length 20'  
Remarks Fine gr. reddish  
partly fract'd and partly  
mineralized at site

Assay For W  
NORTHERN MINER PRESS  
Signed JL

Mine Nine Lakes Exp.  
Ferr Addison  
Date Aug 19/73.  
Hole No. Trench #6

Sample N<sup>o</sup> 866

From 290'S To 310'S  
Sample Length 20'  
Remarks Same as  
270'S to 290'S

Assay For W  
NORTHERN MINER PRESS  
Signed JL

Mine Nine Lakes Exp.  
Ferr Addison  
Date Aug 19/73  
Hole No. Trench #6

Sample N<sup>o</sup> 867

From 310'S To 330'S  
Sample Length 20'  
Remarks Grey fine gr.  
Partly fract'd  
Qtz + Fe

Assay For W  
NORTHERN MINER PRESS  
Signed JL