

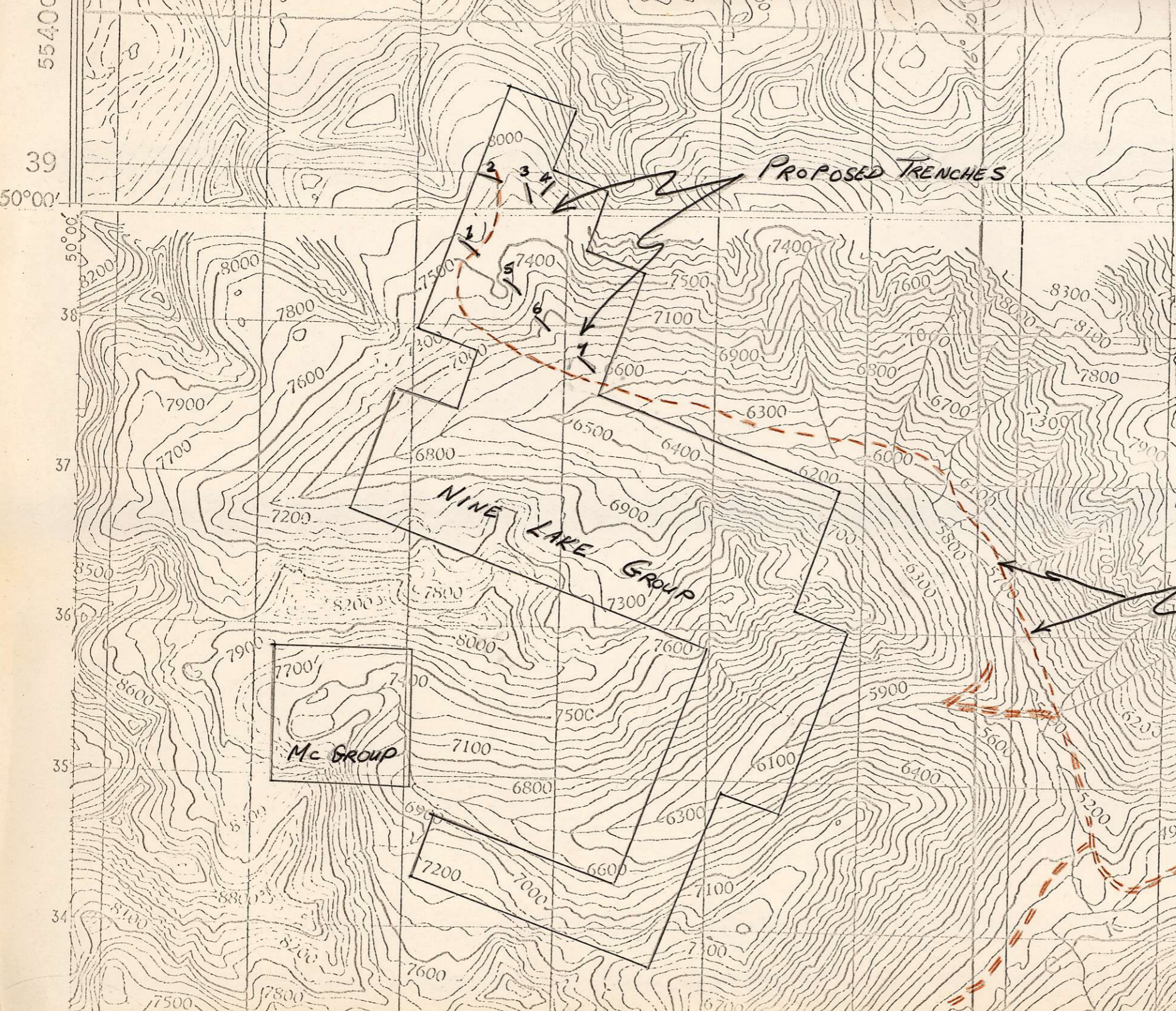
KECK ADDISON MINES LTD.  
NINE LAKE MINERAL CLAIMS, FOOT STICKLE M.D.

PROPOSED ACCESS ROAD  
AND  
TRENCHING LOCATIONS

Scale: 1" = 1/2 MILE

Drawn by: P. Clark, APRIL 26, 1973

to accompany submissions to: Inspector of Mines &  
District Forest Ranger



825305  
Dewar Project