

7+00

outcrop

6

5

4

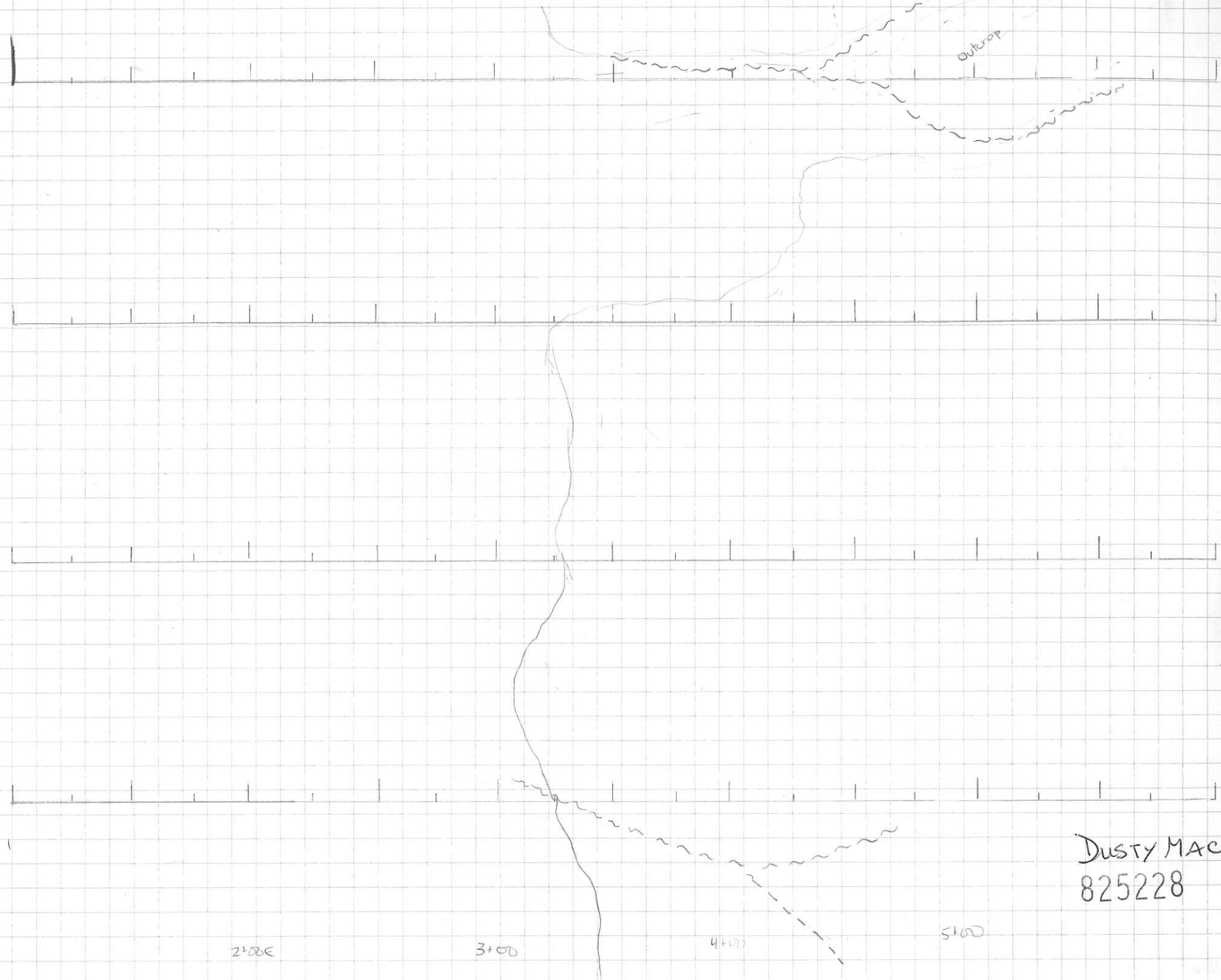
2+00

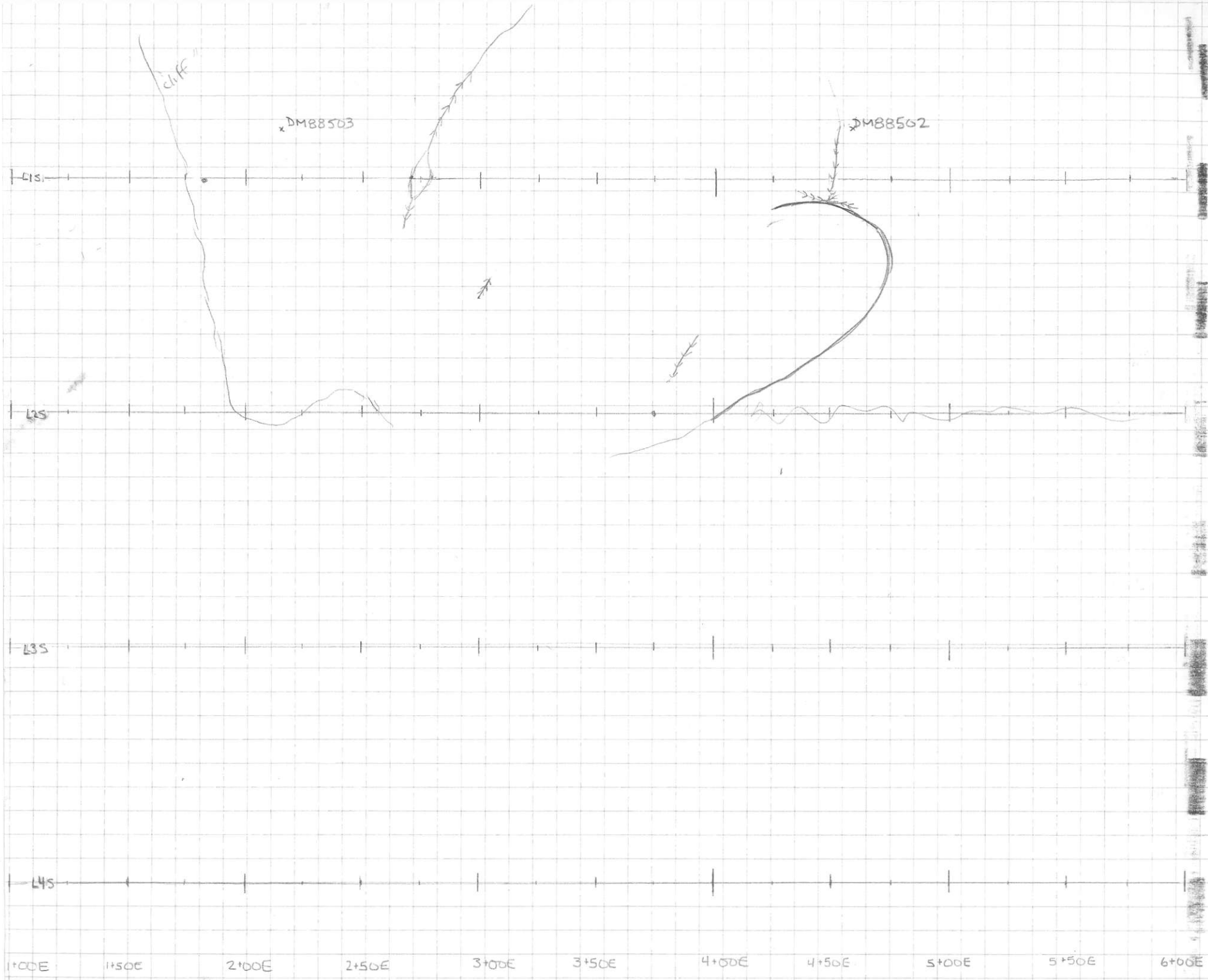
3+00

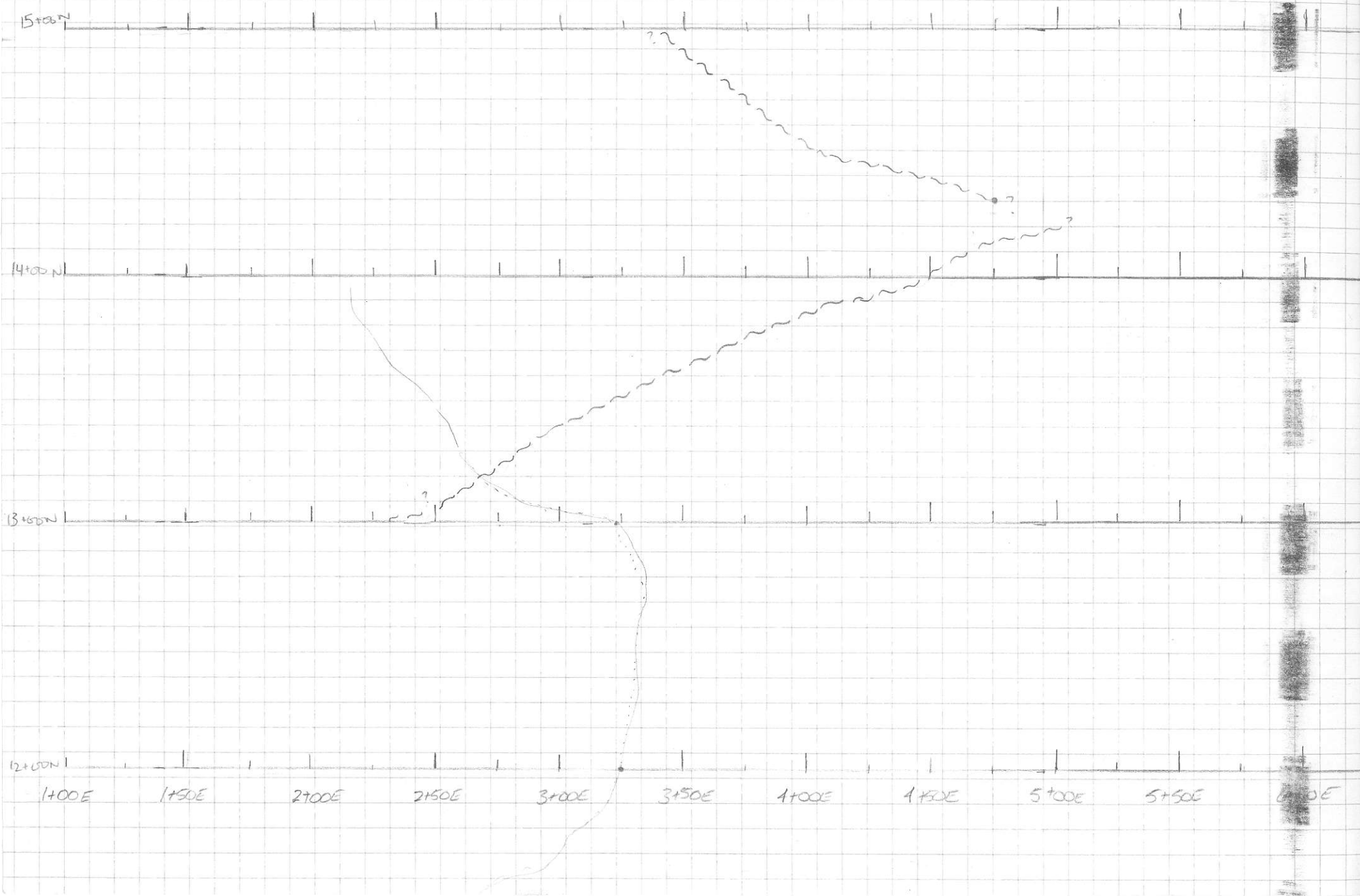
4+00

5+00

DUSTY MAC
825228







N67

N87

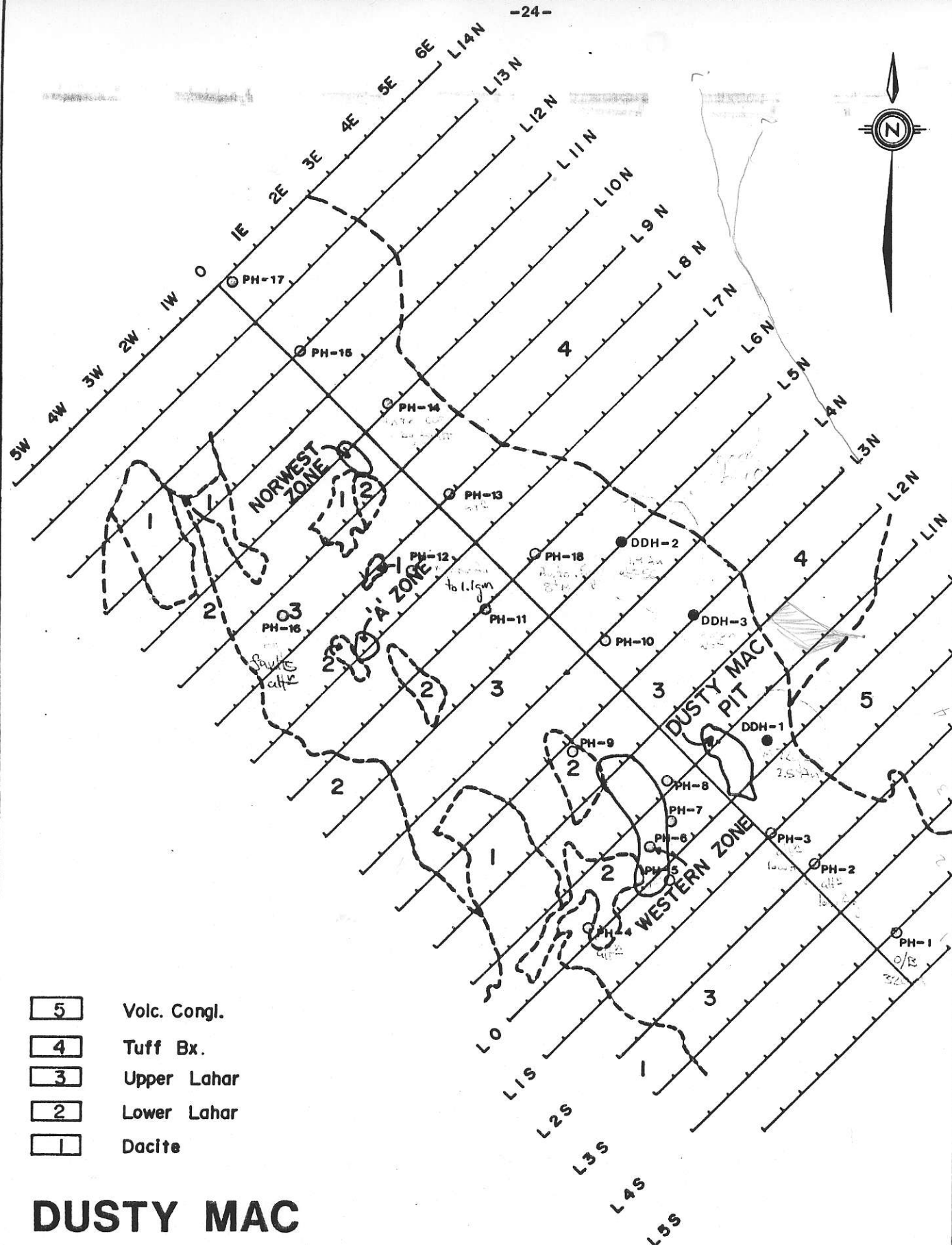
N67

N107

N117

2

D



- 5 Volc. Congl.
- 4 Tuff Bx.
- 3 Upper Lahar
- 2 Lower Lahar
- 1 Dacite

DUSTY MAC

1985 DRILLING

- Percussion Drill Hole
- Diamond Drill Hole

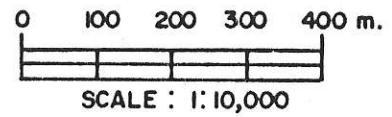


Fig. 6

11+00

10+00

9+00

8+00

1+00E

2+00E

3+00E

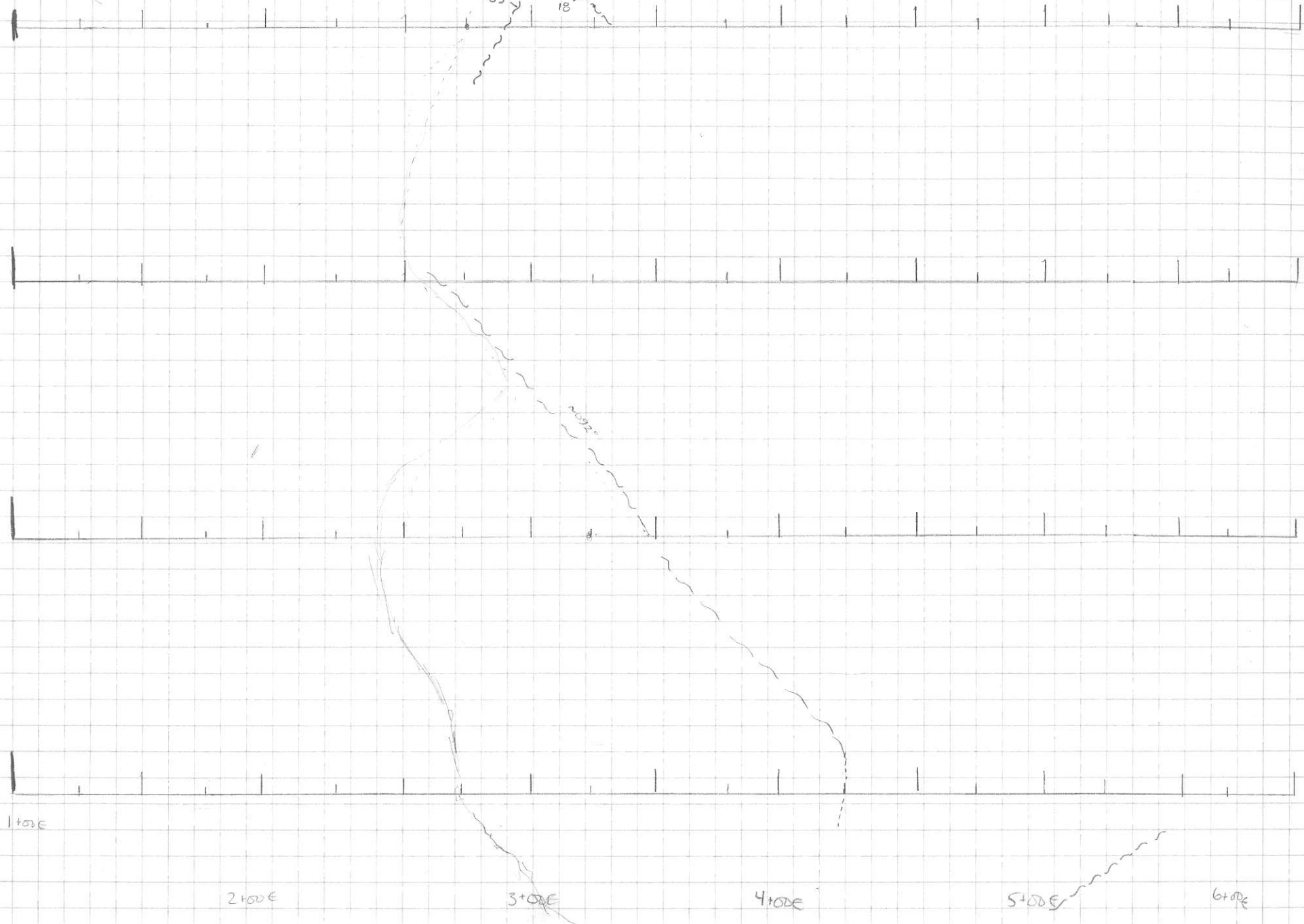
4+00E

5+00E

6+00E

59
18

2092°



S17

2

3W

4

10020 Strongly Silic
Qtz Veinlets
Grossan 1% Py

10019 strongly silic
w/ intense grossan
1-2% Py

10115 Wkly Silic
Strong Hem altⁿ (Domin
clay)
Extremely well
laminated chalc + carb
015/90°

Pit
CHALC VEIN
340/70°W
clay + carb altⁿ
w/ py blebs

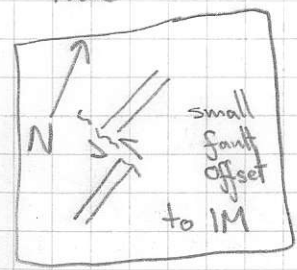
10014 well lamin.
chalc vein + carb

10018 Qtz Veins
w/ Silic ve
w/ 1-2% Py
them

080/70°

altⁿ carb + clay

Note



150

180

180

+ hem veins
+ calcite

unalt^d

Wkly Silic
w/ hem

010
w/ carb
+ clay

unalt^d

10017
Fault Zone
Mod Silic w, Hem

clay altⁿ

broken up
silic zone w, hem

Pit
w/ silic +
hem altⁿ

S12

S3

L2S

L1S

L2G

L1N

10021
Rev. Carb Alt^h
Foliated

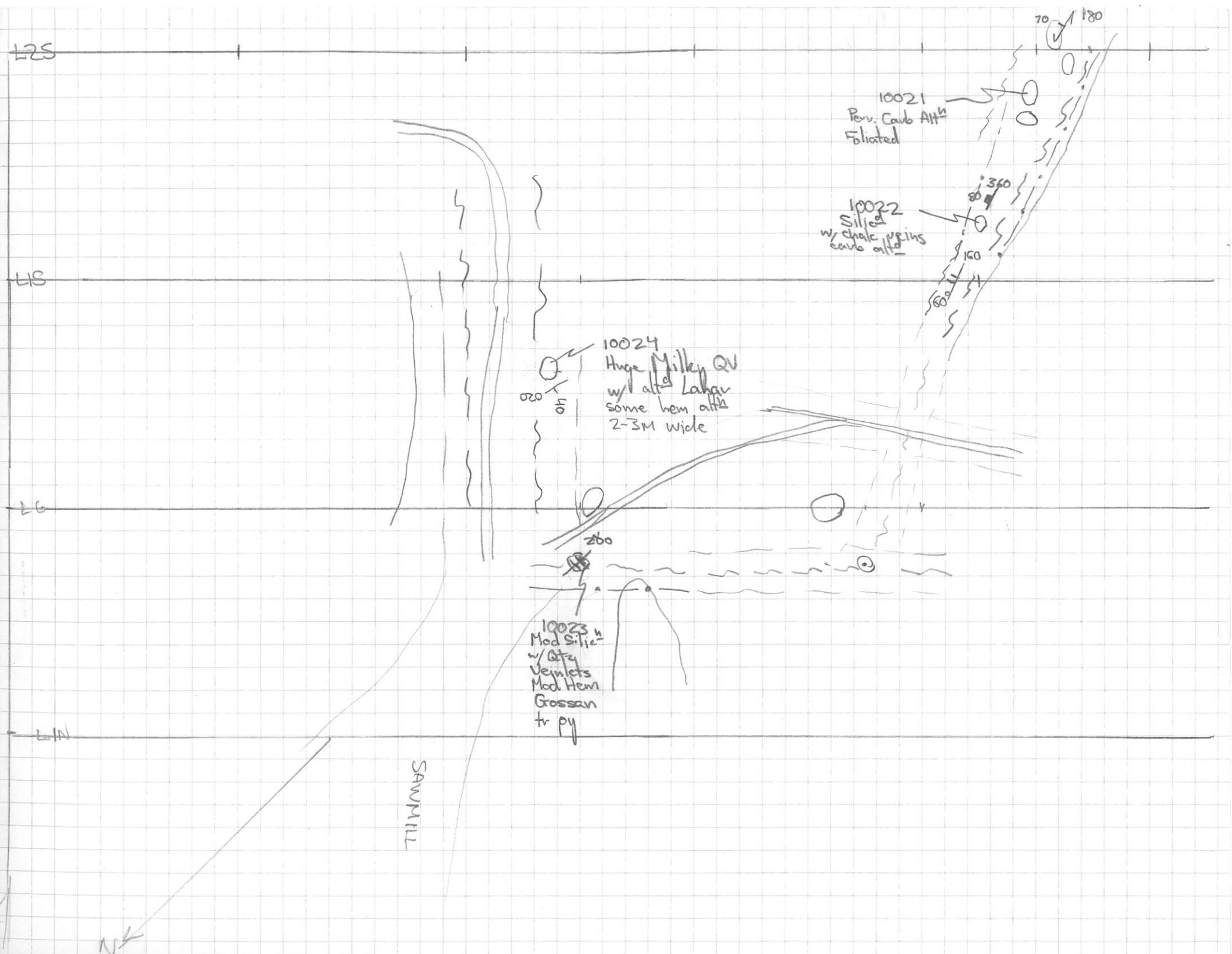
10022
Silic^d
w/ chalc. pyrites
carb alt^h

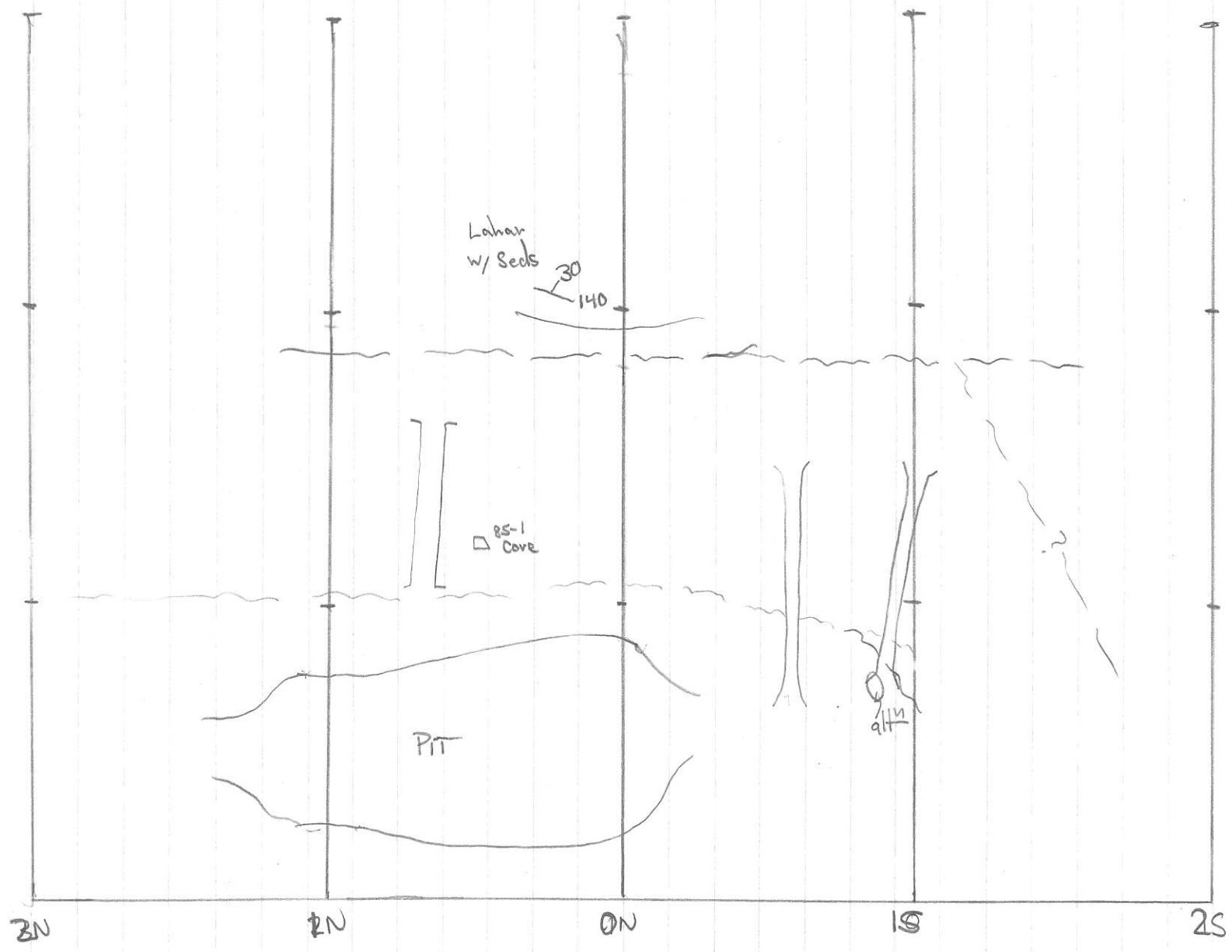
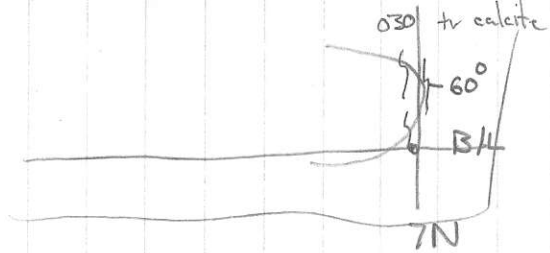
10024
Huge Milky QV
w/ alt^d Lahar
some hem alt^h
2-3M wide

10023
Mod Silic^d
w/ Qtz
Vej. lts
Mod Hem
Grossan
tr py

SAWMILL

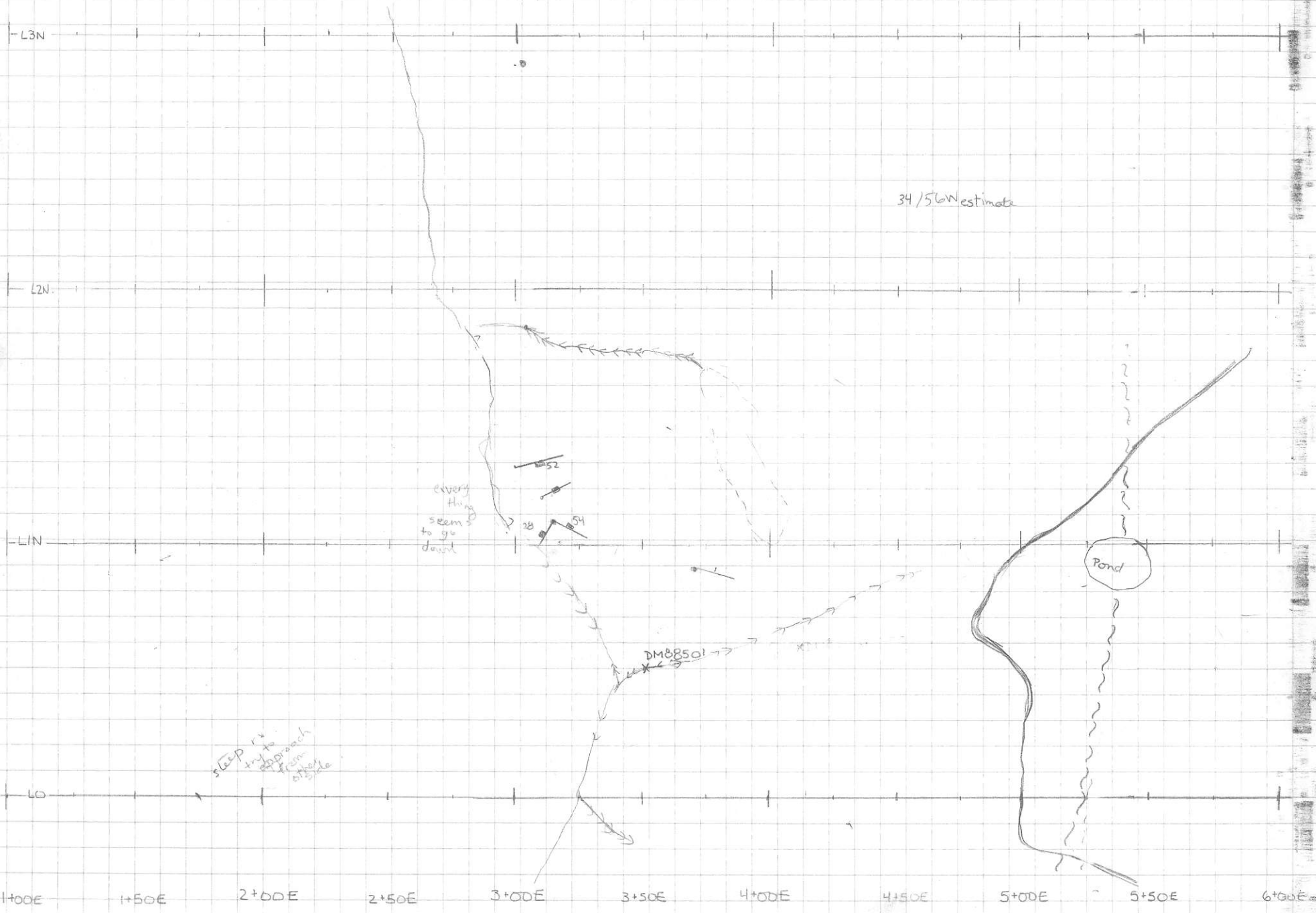
NK



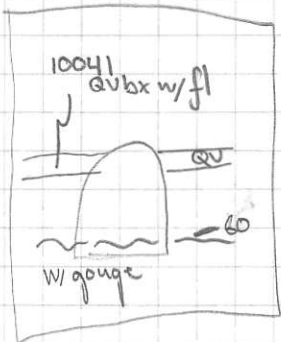


Scale 1:2000
1cm = 20m

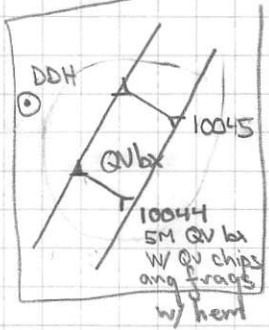
(1:2000)
1cm = 20m
1cm = 20m



#3



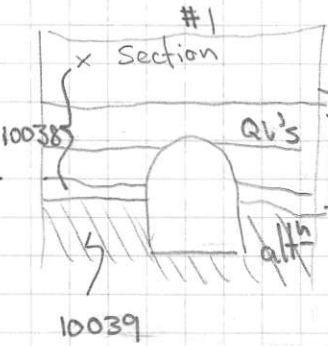
QVbx sheet



10046
Dump Sample
QV bx w/ hem
in matrix
malach, + tet



SW



10039

10038

10039

Vein by
3M wide
Malach
+ tr py
+ tet?

Silicified + Faulted
Intense
a bx w tr py + malach

DUMP 10040

QV w/ hem

5M

some chalc frags

DUMP 10038

Vein by

3M wide

Malach

+ tr py

+ tet?

DUMP 10039

Silicified + Faulted

Intense

a bx w tr py + malach

DUMP

ADIT #1

10-15

330

60

80

180

615

SW

L1

Q

80

C

flat lying calcite veinlets

ADIT #1

10-15

330

60

80

180

615

SW

L1

Q

80

C

10047
mod silicified
w/ clay alt.
gossan

10047

mod silicified

w/ clay alt.

gossan

615

SW

L1

Q

80

C

10046

Dump Sample

QV bx w/ hem

in matrix

malach, + tet

360

190

180

80

345

360

70

80

345

360

70

80

345

360

70

80

345

360

70

80

345

360

70

80

345

360

70

80

345

360

70

80

345

360

70

80

345

360

70

80

345

360

70

80

345

360

70

80

345

360

70

80

345

360

70

80

345

360

70

80

345

360

70

80

345

360

70

80

345

360

70

80

345

360

70

80

345

360

70

80

345

360

70

80

345

360

70

80

345

360

70

80

345

360

70

80

345

360

70

80

345

360

70

80

345

360

70

80

345

360

70

80

345

360

70

80

345

360

70

80

345

360

70

80

345

360

70

80

345

360

70

80

345

360

70

80

345

360

70

80

345

360

70

80

345

360

70

80

345

360

70

80

345

360

70

80

345

360

70

80

345

360

70

80

345

360

70

80

345

360

70

80

345

360

70

80

345

360

70

80

345

360

70

80

345

360

70

80

345

360

70

80

345

360

70

80

345

360

70

80

345

360

70

80

345

360

70

80

345

360

70

80

345

360

70

80

345

360

70

80

345

360

70

80

345

360

70

80

345

360

70

80

345

SAWMILL
ZONE

2N

3N

4N

3/4

Hand?

unald

fence

10013
very broken
silicified hem gossan
2-3% Py

10012
highly altd
hem gossan
silicified w/ 1-2% Py
(loose)

10011
Strong Silica
Hem
vuggy av's
w/ 1-2% Py

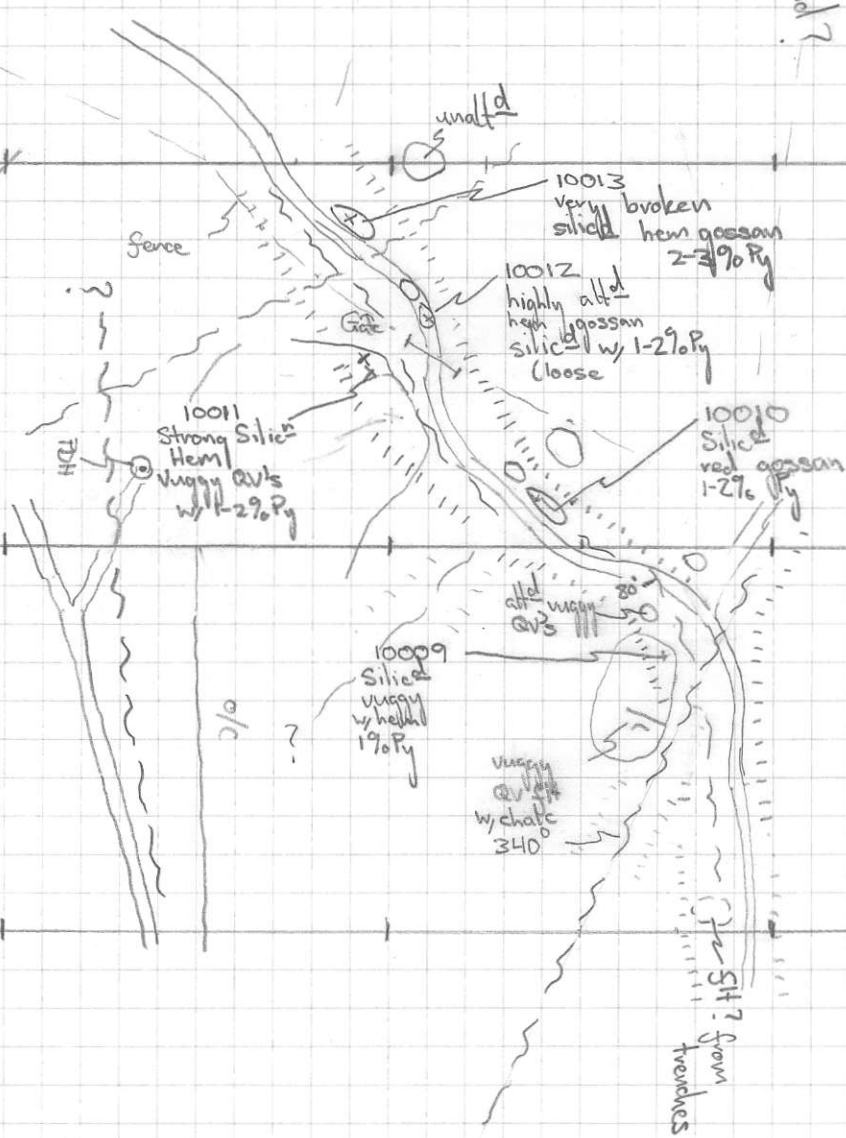
10010
Silica
red gossan
1-2% Py

altd
vuggy
av's

10009
Silica
vuggy
w/ hematite
1% Py

vuggy
av's
w/ chalc
340

SH?
from
handlines



1100

2100

3100

4N

5N

6N

7N

10008
Silicified yellow Goss
Sulph
Calc, Sulph

10007
Strong Silicified w yellow Gossan
fine silicified
1-2% py dissemin

unalt

wk alt

10006
Gossan
40-50%
2-3% py
Vuggy QV
w bit of Goss
Wallrock

10005
Gossan
1-2% py
Silicified

10004
Silicified
Strong Gossan
2-3% py
Qtz Veinlets

(QV frage) -
in Lahar
tr mal
1% Sulph

10003
QV box

10001
SH
Jbx
w mal
+ tet?

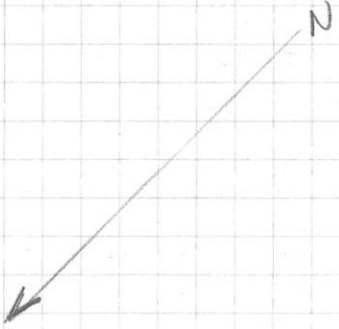
10001
mal, az
2% py
QV box
Sulph? Tet
SH 3-5%

Clay Alt
w Qtz tr py

Qtz Veinlets
Clay Alt

QV w
mal

QV w
mal



B/L

DM/GE/28/5/88

NB Veins are
flat lying

- 1/ N-NW Block Faults
- 2/ Min/zn
- 3/ Shallow E dipping Faults
- 4/ E-W Faults

ON

DM
RT

