

94 - 30-40
45-50 - good sil.
75-100 - good sil
rest - ~~good~~ not hard

95 -

97 -

96 - first part looks good

75 - 65-70 pyrite plus - ~~look~~ grey sed?
70-75

81 - 115-120 excellent pyrite + 10% maybe 20%
190-195 " " 5-10% pyrite
65-70 " " " "

82 - not much pyrite at start of hole

90 - same as 81

99 - not so much pyrite as 80's slight chlorite at times

98 45-50 no pyrite to very slight " " " "
50-100

105 120-125 5-10% pyrite 90-95 55-60 70-75 60-65
10-15 very little pyrite. chloritic
25-30 " chloritic 35-40

120 · 25-30 Epidote green
50-60 Epidote → fine py.
60-65 " " " "
85-90

119 70-75 1 purple-pitca -
145-150
~~85~~

121 - 50-55 - not much pyrite
150-155 white silica - fair pyrite
175-180 -
100-105 light to white sil. - br.
70-75 - good pyrite - slight epidote green -
65-70 good white sil. - " " " - coarse py.
190-195 - fine py - light gray -

	(1) <u>SO₂</u>	(2) <u>P₄</u>	(3) <u>Colour</u>	(53) ① ② ③	(49) ① ② ③	175-180 54 ① ② ③	36 ① ② ③	61 59 ① ② ③	62 ① ② ③	57 ① ② ③
(35) 0-5										
5-10				✓ 0 red	f 0 gr.			✓		
10-15				✓ 0 "			✓	✓	✓	
15-20				✓ 0 8y red			✓	✓		
20-25				✓ 0 gr	✓ 0 gr	✓		✓		
25-30				✓ 0 gr			* ✓	✓		* ✓
30-35						* ✓		✓	✓	
(50) 35-40 poor 0 grey						* ✓				✓
(50) 40-45 " " "					✓ 0 (90s) gr	* ✓	✓			
45-50										* ✓
(40) 50-55							✓			
55-60										* ✓
60-65					f 0 gr		✓			
65-70						* ✓				
70-75							✓			✓
75-80 good 0 grey					✓ 0 gr					
80-85 good 0 grey					✓ 0 gr		✓			✓
85-90 good poor grey							✓			
90-95 " poor grey							✓			
95-100 " 0 grey										
100						* ✓				
105					✓ 0 gr		✓			
110										
115										
120						* ✓				
125										
(X) 130 135						* 0 white				
135										
140 feet					✓ 0 gr					

12, (circled) 308, (circled) 7103

		Ag
17'	channel -	7.15% CaF ₂ 1.52
37'	"	1.97% CaF ₂ 16.54
22'	"	.64% CaF ₂ .70
	grab last round	6.6% CaF ₂ 5.58
30'	(open cut) channel	4.83 6.58
50'	channel (open cut adit)	.94 1.54
	grab of shaft dump	2.32 4.42

Walls of main adit -



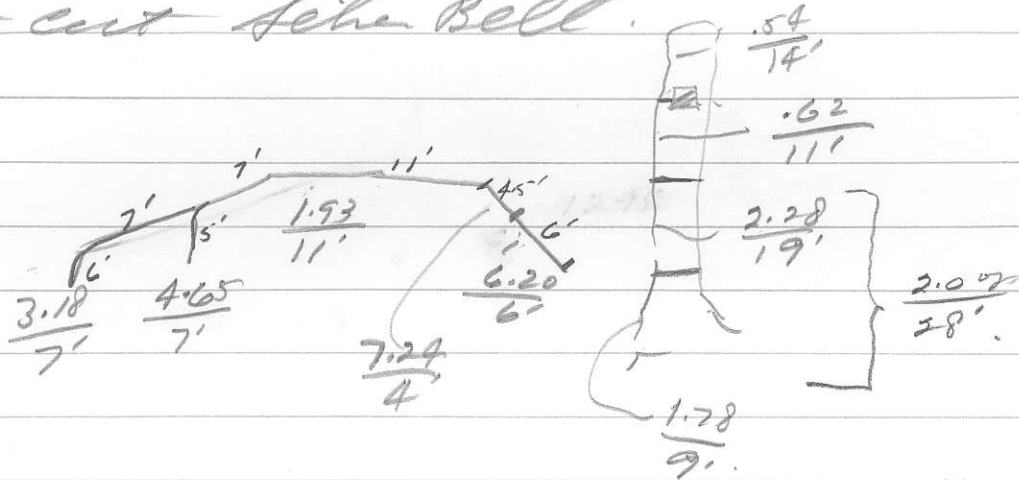
350' of adit

- 3.67
- 5.4
- 7.9
- 1.8
- 17.8
- 3.4
- 6
- 2.9
- 2.8

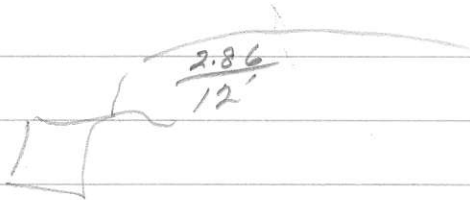
nt sample .11 Au 76.02 Ag .2% Cu
 shaft surface cut. 16"
 shaft surface cut 4.02 Tr 16"
 .01 Au 41.02 14"
 .09 Au 5.6 16"
 .01

July m. - much below date 6.31 after

open cut like Bell.



Shot up hill for 0' cut.



25' of o.c - 100' W. of open cut.

$$\frac{4.20}{25'}$$

Left wall of tunnel at face - drilled top
 & rose wall 4.96 W.

Face of lower adit $\frac{3.11}{12'}$

Adit 100' west wall

look for face $\frac{.75}{100}$

adit 50' west wall $\frac{.81}{50'}$
 150' look for face.

82E 4E

C.L.	Stamanta Fr	1	3281 S
	Richland Fr		702 S
	Gold Bug		934
	Randolf		731
	Shamrock		720
	Fidelity		3279 S

3 levels ? 2 for sure

in 1200' widths 10' - 5'
 0 - several oz.

<u>Am</u>	<u>Ag</u>
1.9	3.36
.1	.64
.64	5.82
1.02	15.24
1.32	39.52

} may be pillars (same tonnage)

Cross cut

U.B.C. = school -

- Fairview -

May 20 Silver Bell

