

824935

REPORT ON

MD 1 - MD 270 MINING CLAIMS

CARIBOO MINING DIVISION, B. C.

Submitted by

Andrew E. Nevin, Ph. D., P. Eng.

April 13, 1971

Andrew E. Nevin Consultants Ltd.

426-470 Granville Street

Vancouver 2, B. C.

CONTENTS

	<u>Page</u>
PART A	
TERMS OF REFERENCE	1
SCOPE	1
SUMMARY	1
RECOMMENDATIONS	2
Estimated Costs	2
PART B	
INTRODUCTION	3
HISTORY	3
GEOLOGY AND GEOPHYSICS	4
Group A: MD 1-56	5
Group B: MD 57-84	5
Group C: MD 85-112	6
Group D: MD 113-136	6
Group E: MD 137-166 and 243-270	7
Group F: MD 167-194	7
Group G: MD 195-242	7
GENERAL COMMENT	8
PART C	
REFERENCES	9
PART D	
CERTIFICATION OF THE WRITER	10

TABLE

	<u>Page</u>
Table - Rock Units in the MD Claim Area	4

ILLUSTRATIONS

Drawing 1.-Geological and Magnetic Map, MD Claims	in pocket
Drawing 2.-Sketch, Group A	11
Drawing 3.-Sketch, Groups B, D and F	12
Drawing 4.-Sketch, Groups C, E and G	13

PART CREFERENCES

- Campbell, R. B. (1961) Geology, Quesnel Lake, West Half; Geol. Survey of Canada, Map 3-1961
- Campbell, R. B., and H. W. Tipper (1970) Geology and Mineral Exploration Potential of the Quesnel Trough, British Columbia; Canadian Mining and Metallurgical Bull., July, Vol. 63, No. 699, pp. 785-790
- Geol. Survey of Canada (1962) Magnetic Maps 1532G and 1533G
- Geol. Survey of Canada (1963) Magnetic Maps 1537G and 1538G
- Tipper, H. W. (1959) Geology, Quesnel; Geol. Survey of Canada, Map 12-1959

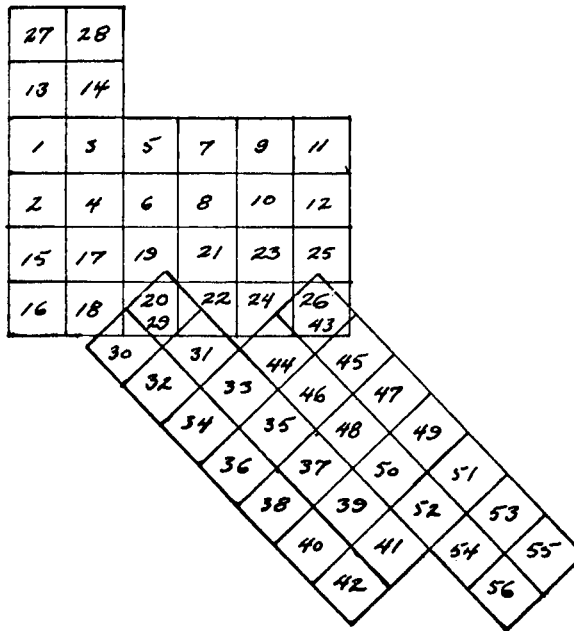
PART DCERTIFICATION OF THE WRITER

I, Andrew E. Nevin, resident at 968 Hartford Place, North Vancouver, B. C., and maintaining an office at 426-470 Granville Street, Vancouver 2, B. C., hereby certify that:

1. I am a Member of the Association of Professional Engineers (Geological) of the Province of British Columbia;
2. I hold a B. Sc. in Geophysics from St. Lawrence University, a M. A. in Geology from University of California, Berkeley, and a Ph. D. in Geology from University of Idaho;
3. I have been practicing my profession for more than six years;
4. I examined the MD claims April 4-7, 1971;
5. I have no direct or indirect interest in Dusty Mac Mines Limited (N. P. L.) or any of their properties, nor do I expect to have any in the future.

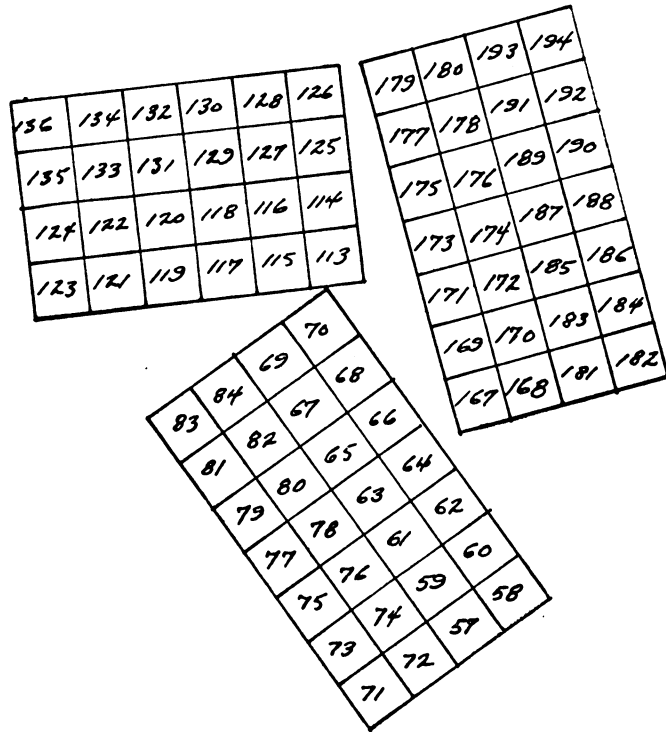


ANDREW E. NEVIN, Ph. D., P. Eng.
April 13, 1971



Drawing 2.-Sketch of Group A; MD 1-56

Scale 1:63,360



Drawing 3.-Sketch of Group B: MD 57-84; Group D: MD 113-136; and Group F: MD 167-194

Scale 1:63,360

111	112	97	98
109	110	95	96
107	108	93	94
105	106	91	92
103	104	89	90
101	102	87	88
99	100	85	86



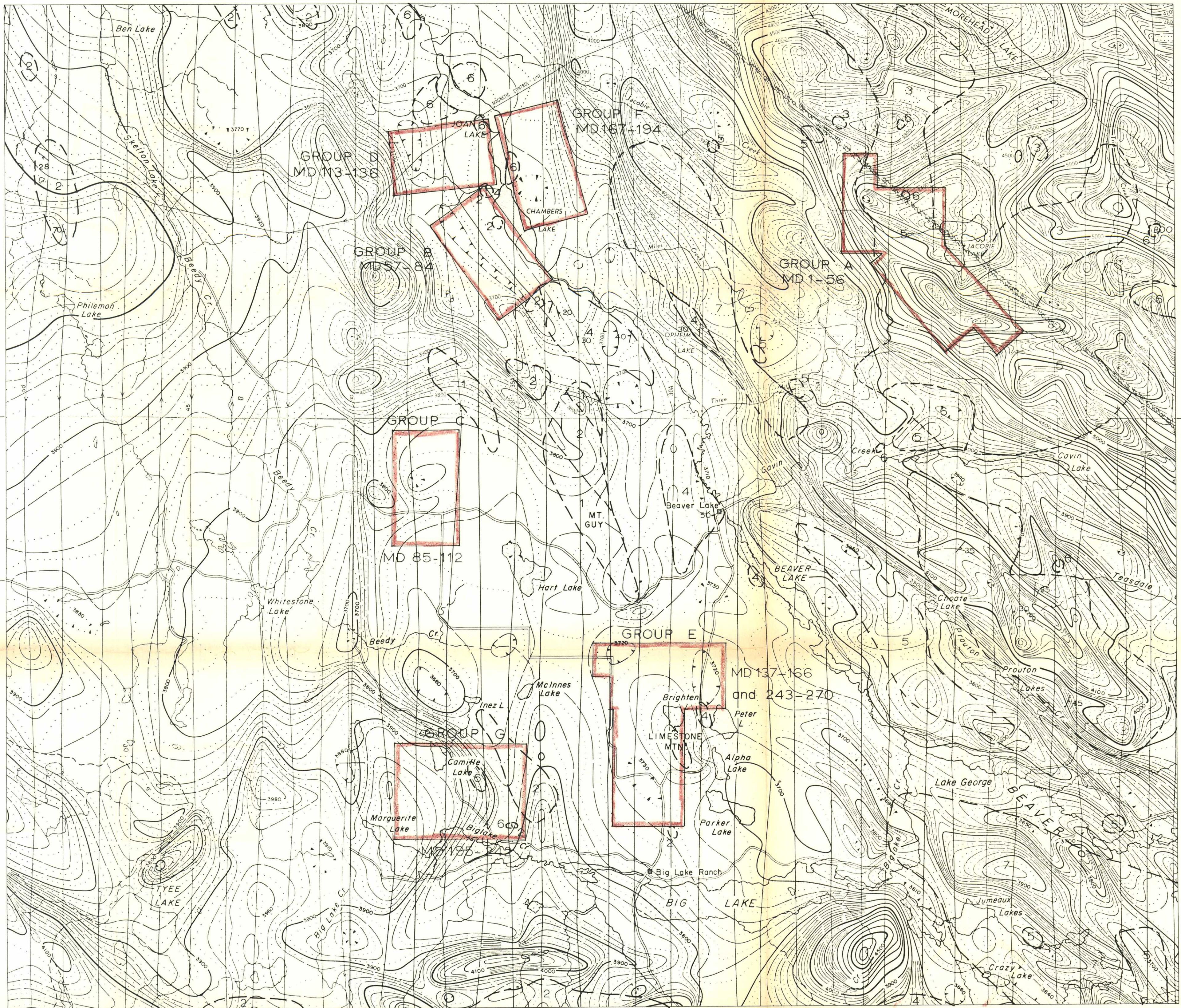
137	139	141	143	145	147	149	151
138	140	142	144	146	148	150	152
153	155	157	159	161	163	165	
164	156	158	160	162	164	166	

269	270	255	256
267	268	253	254
265	266	251	252
263	264	249	250
261	262	247	248
259	260	245	246
257	258	243	244

242	240	238	236	234	232	230	228
241	239	237	235	233	231	229	227
226	224	222	220	218	216	214	212
225	223	221	219	217	215	213	211
210	208	206	204	202	200	198	196
209	207	205	203	201	199	197	195

Drawing 4.-Sketch of Group C: MD 85-112; Group E: MD 137-166 and 243-270;
and Group G: MD 195-242

Scale 1:63,360



McLeese Lake
15 mi's.

52°30'

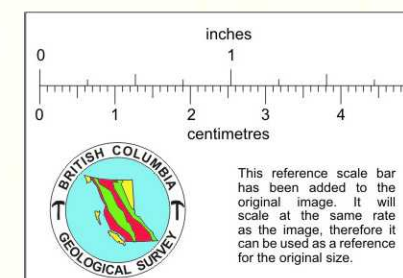
BASE: G. S. C. MAPS 1532G, 1533G, 1537G, 1538G

122°00'

GEOLOGY AFTER CAMPBELL, MAP 3-1961; TIPPER, MAP 12-1959

LEGEND

- gravel cover
- 7 basalt cover
- 6 intrusives
- 5 andesites, Jurassic
- 4 conglomerates and shales, Jurassic
- 3 andesites, lower Jurassic
- 2 argillites, Cache Creek
- 1 limestone, Cache Creek



DUSTY MAC MINES LIMITED (N.P.L.)
MD 1-270 CLAIMS
GEOLOGICAL AND MAGNETIC MAP



ANDREW E. NEVIN CONSULTANTS LTD.

A.E.N. 4/71

Drawing 1