

geotec

GEOTEC CONSULTANTS LTD., 6976 Laburnum St., Vancouver, B. C. V6P 5M9

P: (604)261-7477 / F:662-3710

July 22, 1991

Mr. Alex Davidson
MINNOVA INC.
311 Water Street, 3rd Floor
Vancouver, B.C. V6B 1B8

824903
TAS

FILE NTS
TAS 82E/R



Dear Alex:

RE: TAS CLAIMS, Copper Mountain Area, B.C.

I thought that these claims may be of interest to your group. I am acting as agent for a local prospector/geologist that has staked the TAS CLAIMS (40 units) on the west and adjacent to Similco mine .

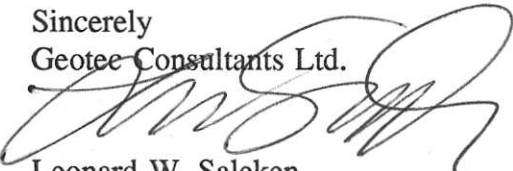
The exploration potential of the TAS CLAIMS is excellent. The geology is similar to and is in close proximity to the Oriole Pits (1000m). The TAS CLAIMS are ideally located within the mine camp and provide similar exploration potential to the Copper Mountain orebodies. The TAS was staked over the TASS showing that is reported in MINFILE but incorrectly located on the map. Phelps Dodge had the ground in the 1970's and obtained encouraging results.

The TAS location map references the claims to the Similco operations. Other companies active in the immediate area are Teck, Westmin and Princeton Mining with Phelps Dodge to the north west.

Ownership of the TAS is 100% and Geotec is seeking a funding partner to finance the work on the claims.

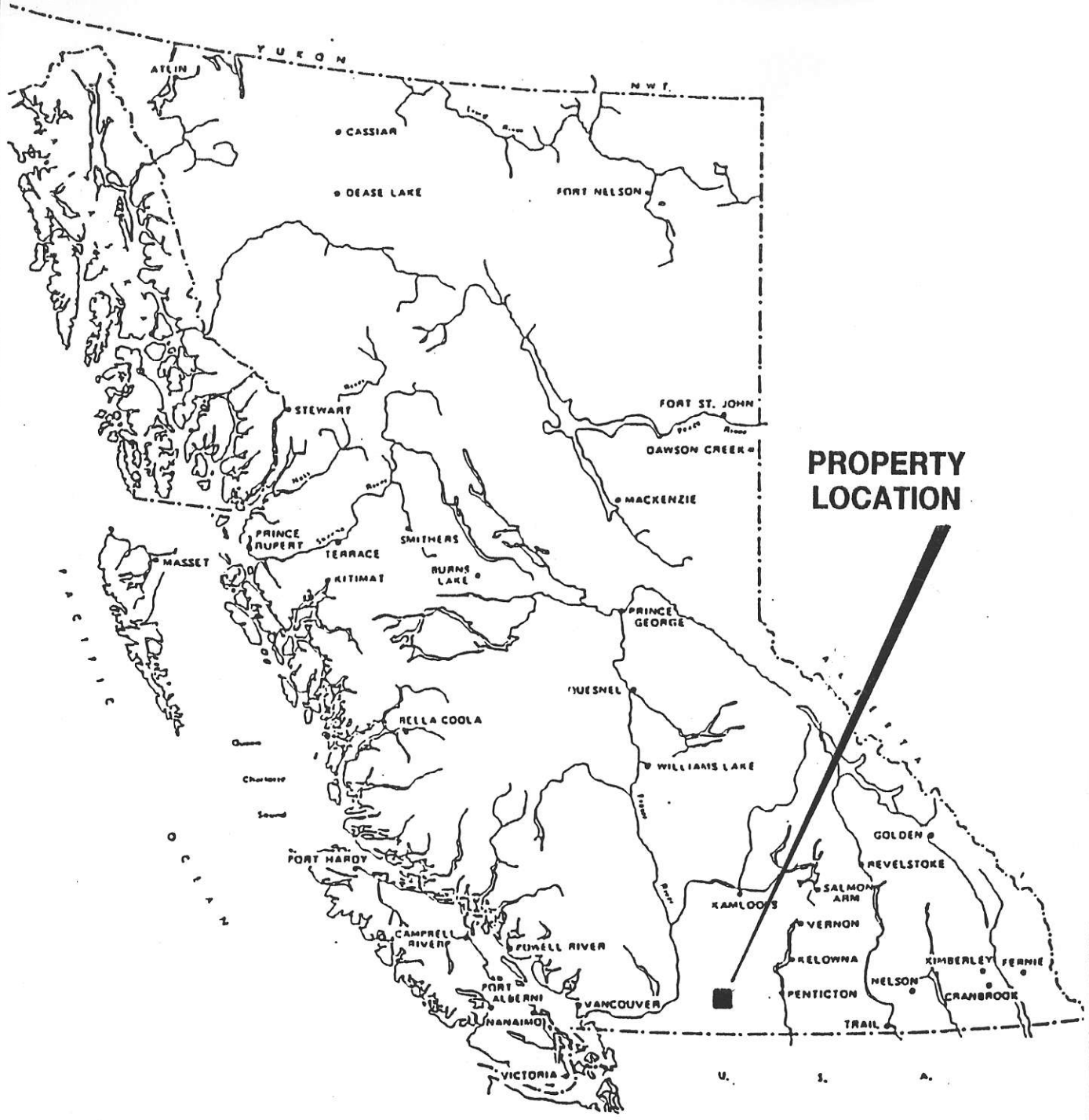
Please contact me at your earliest convenience if you are interested.

Sincerely
Geotec Consultants Ltd.


Leonard W. Saleken
President

Encl: 5

wp51\geotec\tascor10.ltr

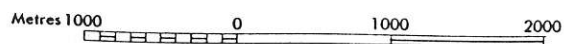
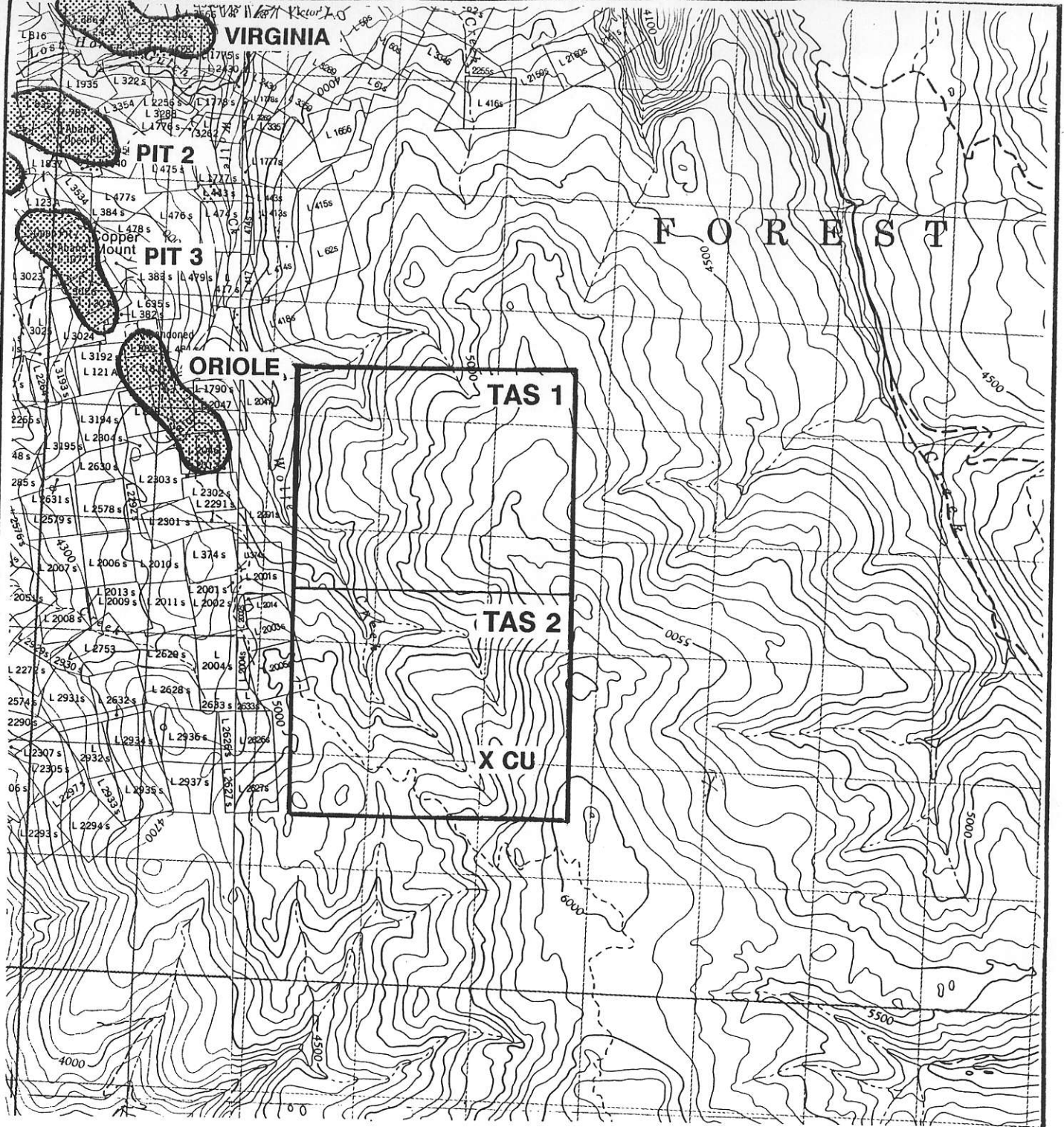


**PROPERTY
LOCATION**

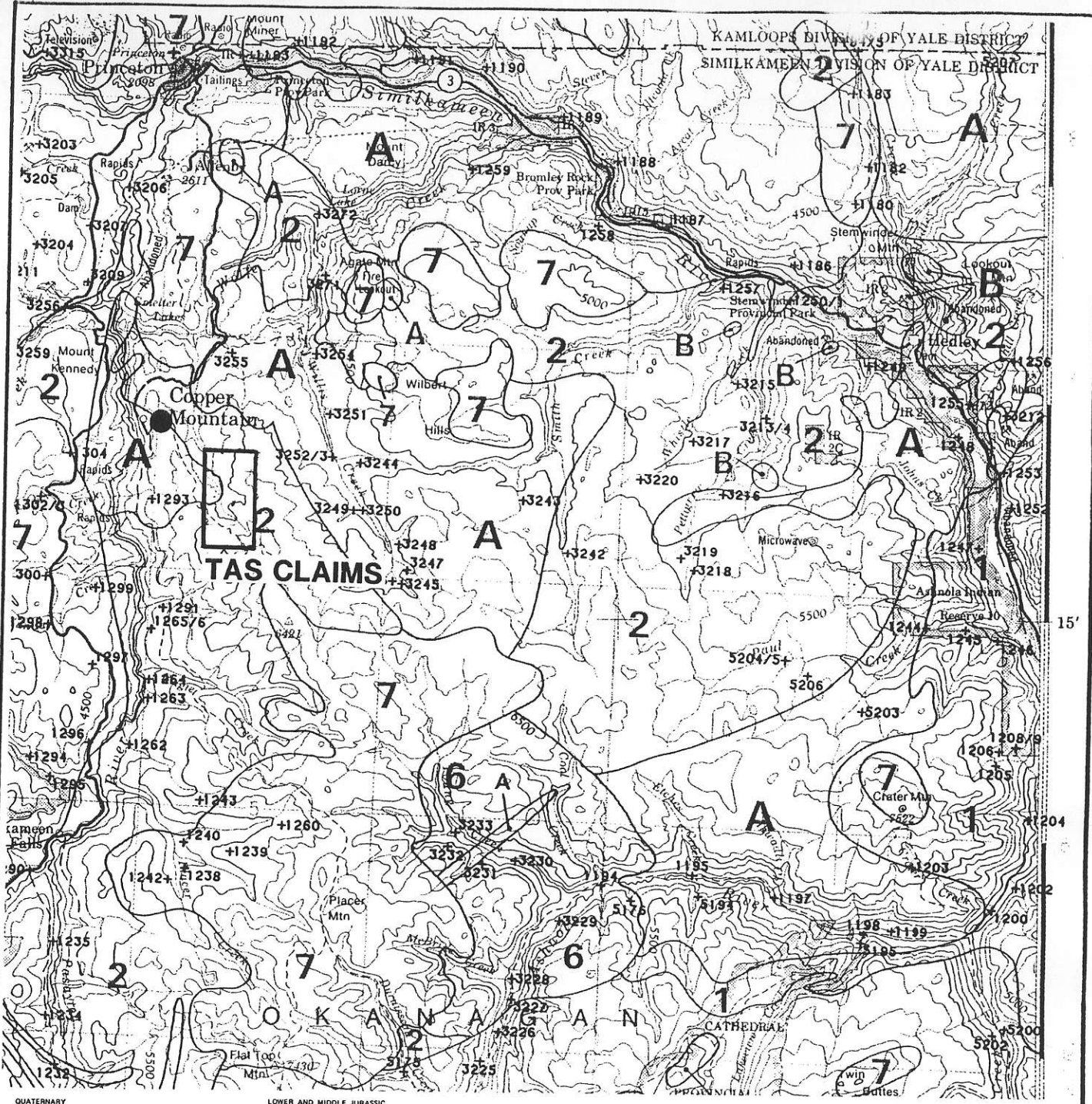


**LOCATION MAP
TAS CLAIMS**

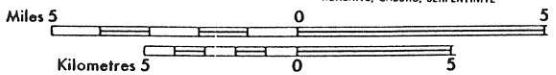
DRAWN BY :	DATE :	DRAWING NO. :	
SCALE :	PROJECT :	FIGURE NO. :	



TAS CLAIMS LOCATION MAP			
DRAWN BY:	DATE:	DRAWING NO.:	
SCALE:	PROJECT:	FIGURE NO.:	
1:50,000			

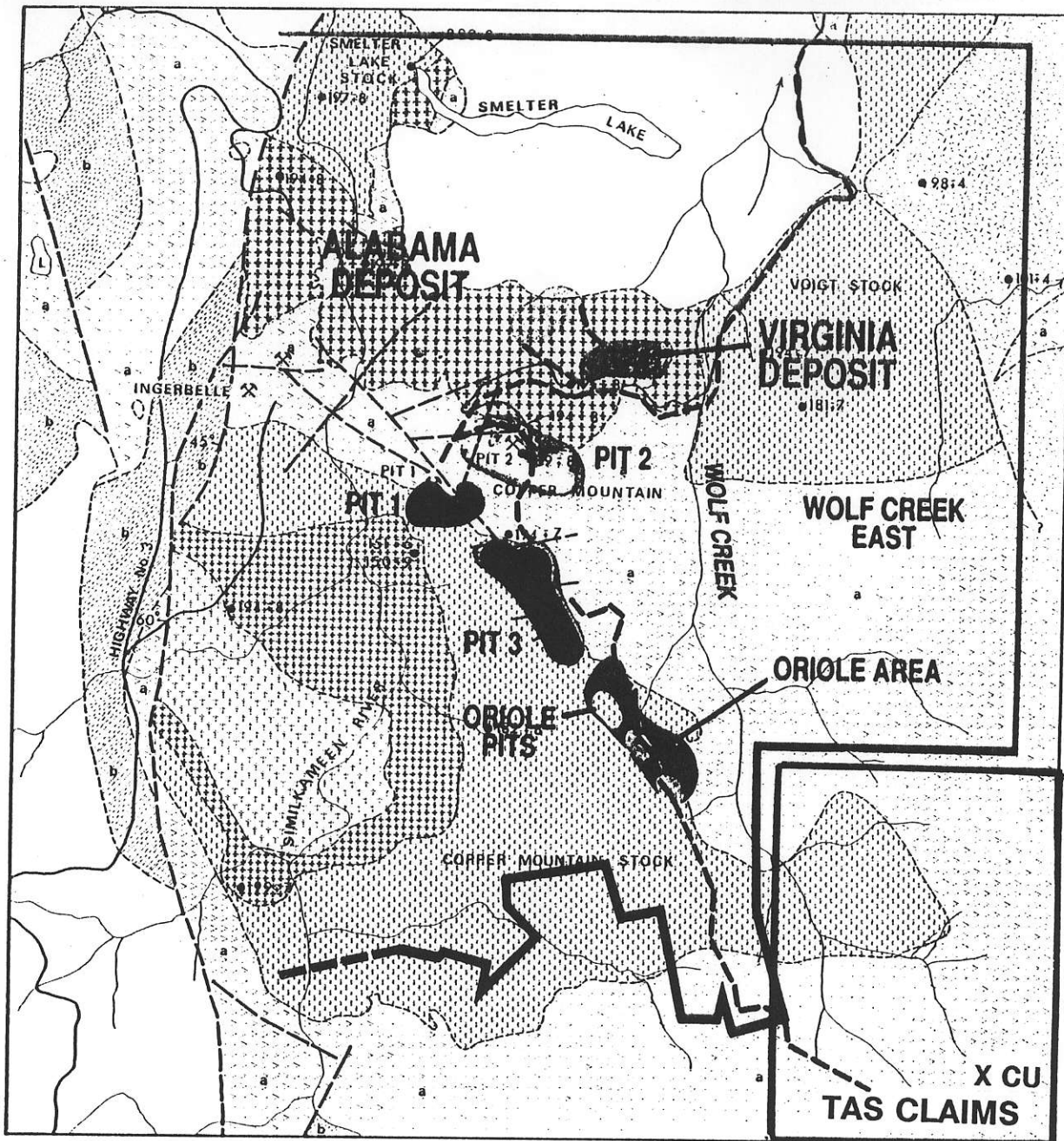


- QUATERNARY**
- 10 (TILL 44) TILL, GRAVEL, SILT, CLAY
- TERTIARY**
- 9 (BSLT 42) VARICOLOURED VESICULAR VALLEY BASALT, BROWN AMYGDALOIDAL PLATEAU BASALT
 - 8 (BSLT 42) COQUIHALLA GROUP; SKAGIT FORMATION: BASALT, RHYOLITE, TUFF, ANDESITE, AGGLOMERATE
 - 7 (ICGLM 42) PRINCETON GROUP; HUNTING FORMATION: CONGLOMERATE, SANDSTONE, SHALE, ANDESITE, BASALT
- MESOZOIC**
- CRETACEOUS**
- 6 (ANDS 36) KINGSVALE GROUP; SPENCES BRIDGE GROUP: ANDESITE, BASALT, AGGLOMERATE
 - 5 (ISDS 35) PASAYTEN GROUP; DEWDNEY GROUP; JACKASS MOUNTAIN GROUP; TAMMAY GROUP; AGASSIZ GROUP; BROKENBACK HILL FORMATION; PENINSULA FORMATION; AGASSIZ PRAIRIE FORMATION; KENT FORMATION; BILLHOOK CREEK FORMATION; ECHO ISLAND FORMATION; CULTIS FORMATION; SANDSTONE, CONGLOMERATE, TUFF, ARGILLITE, AGGLOMERATE; MINOR AMOUNTS OF ARKOSE AND GREYWACKE
- LOWER AND MIDDLE JURASSIC**
- 4 (SLTE 34) LADNER GROUP: MAINLY SLATE, GREYWACKE, GRIT, CONGLOMERATE
- MIDDLE JURASSIC**
- 3 (HEV 34) HARRISON LAKE FORMATION: INTERMEDIATE TO ACID FLOW AND PYROCLASTIC ROCKS, AGGLOMERATE
- TRIASSIC**
- 2 (ANDS 32) NICOLA GROUP; TULAMENE GROUP: ANDESITE, BASALT, GREYWACKE, AGGLOMERATE, BRECCIA; MINOR AMOUNTS OF ARGILLITE, LIMESTONE, AND CONGLOMERATE
- PALEOZOIC**
- CARBONIFEROUS OR LATER**
- 1 (IGRS 10) CHILLIWACK GROUP; HOZAMEEN GROUP; BRADSHAW FORMATION; INDEPENDENCE FORMATION; SHOEMAKER FORMATION; OLD TOM FORMATION: BASIC VOLCANIC ROCKS, CHERT, QUARTZ-MICA SCHIST, GNEISS; MINOR AMOUNTS OF LIMESTONE
- PLUTONIC ROCKS**
- MESOZOIC AND YOUNGER**
- A (IGRT 41) SCUZZY, SPUZZUM, AND NEEDLE PEAK PLUTONS; OTTER, LIGHTNING CREEK, COPPER MOUNTAIN INTRUSIONS AND SIMILAR GRANITIC ROCKS; GRANITE, QUARTZ MONZONITE, GRANDIORITE, QUARTZ DIORITE, DIORITE, FELDSPAR PORPHYRY; MINOR AMOUNTS OF PEGMATITE AND APLITE
 - B (IPRT 41) OLIVINE MOUNTAIN, LODGESTONE MOUNTAIN, AND SIMILAR ULTRAMAFIC ROCKS: PERIODOTITE, PYROXENITE, GABBRO, SERPENTINITE

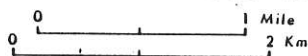


TAS CLAIMS REGIONAL GEOLOGY

DRAWN BY:	DATE:	DRAWING NO.:	
SCALE:	PROJECT:	FIGURE NO.:	
1:250,000			



GENERALIZED GEOLOGY OF THE COPPER MOUNTAIN AREA



- MIDDLE EOCENE
- PRINCETON GROUP
 - ANDESITIC VOLCANIC ROCKS
- LOWER CRETACEOUS
 - ▨ VERDE CREEK QUARTZ MONZONITE
- UPPER TRIASSIC
 - COPPER MOUNTAIN INTRUSIONS
 - LOST HORSE COMPLEX
 - PORPHYRITIC MICRODIORITE TO MICROSYENITE AND PORPHYRY BRECCIA

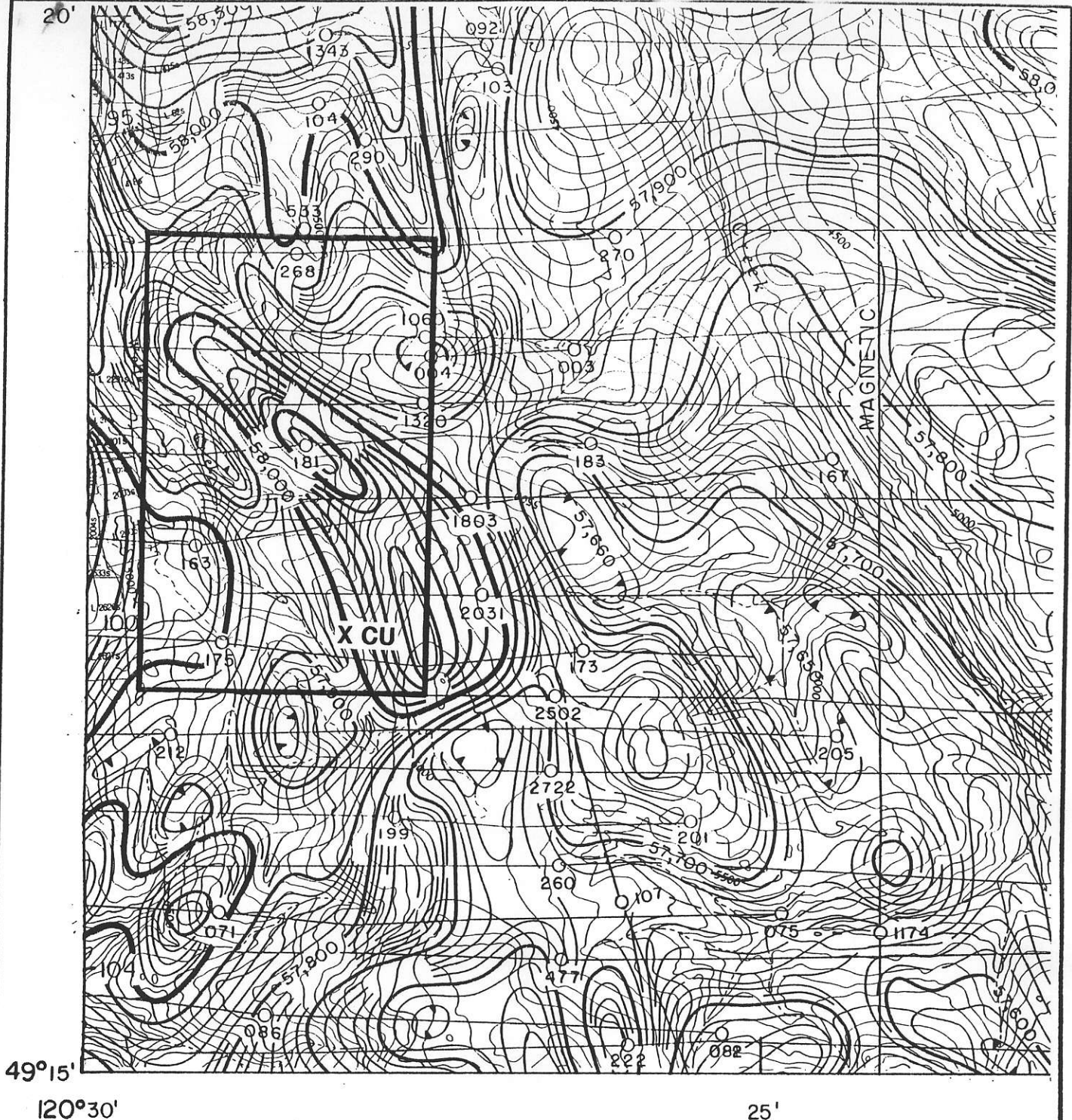
- COPPER MOUNTAIN, VOIGT AND SMELTER LAKE STOCKS
 - ▨ PERTHOSITE PEGMATITE
 - ▨ MONZONITE
 - ▨ DIORITE

- NICOLA GROUP
 - ▨ (a) ANDESITIC VOLCANIC ROCKS
 - ▨ (b) SEDIMENTARY ROCKS

SAMPLE LOCATION AND AGE IN M.Y.@101:4

TAS CLAIMS AREA GEOLOGY

DRAWN BY :	DATE :	DRAWING N° :
SCALE :	PROJECT :	FIGURE N° :



TAS CLAIMS MAGNETIC MAP			
DRAWN BY:	DATE:	DRAWING NO.:	
SCALE: 1:50,000	PROJECT:	FIGURE NO.:	

