

DIVIDEND PROPERTY SUMMARY

GEOLOGY - NE trending Old Tom and Shoemaker Fm. (Pm) intruded by (Msz) Diorites and Pyroxenites. Highly folded and faulted units similar to Gil.

STREAM SED. HEAVIES - Area anomalous in Au, Ag, Pb, Cu, W, ± Ba.

MINERALIZATION - 3 main belts

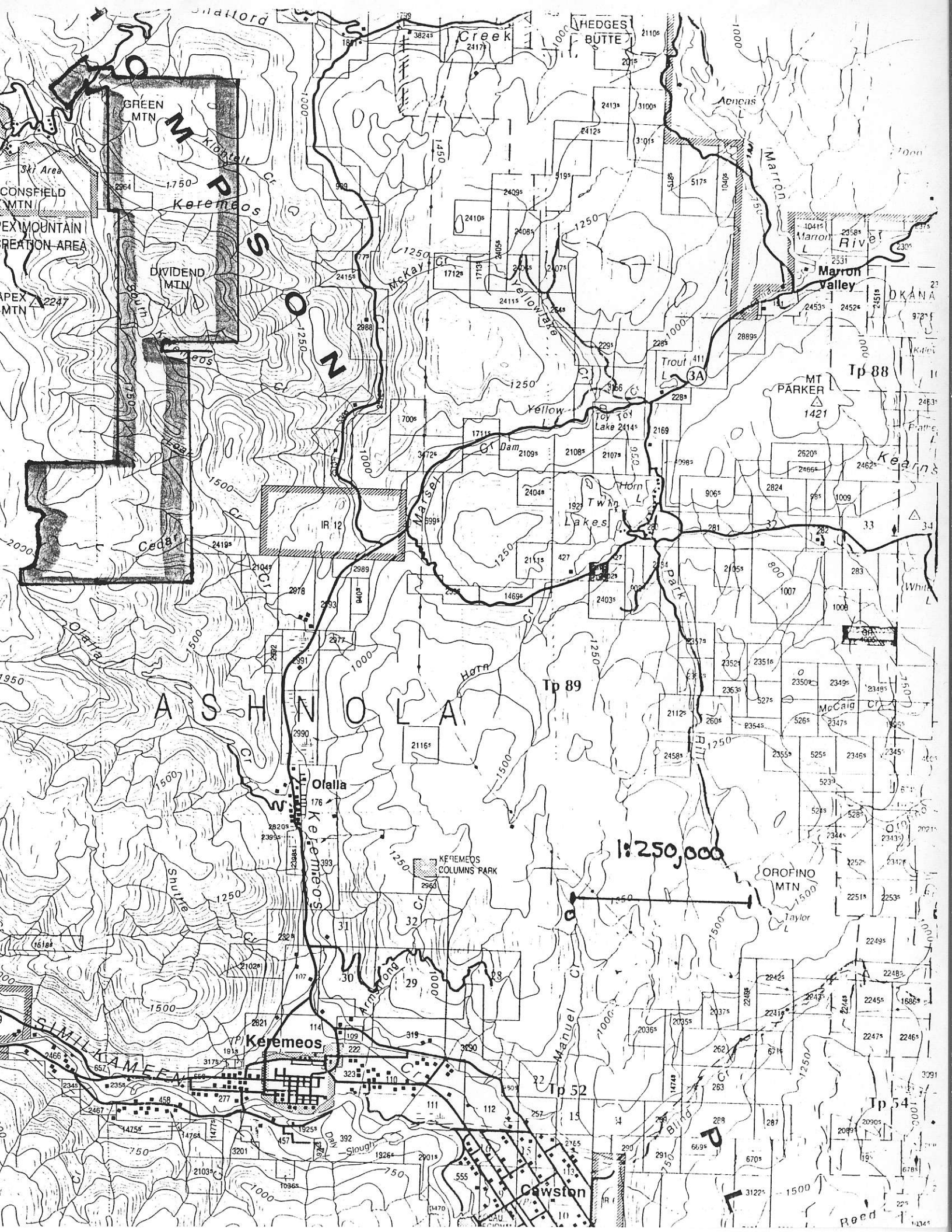
Southern belt extension of Deanna = Acacia (held by Cominco) which produced 109 tons yielding 185 oz Au, 54 oz Ag, 1518 lbs Cu. The belt extends through Pair of Sevens and Paychex with numerous pits. Ore is stratiform in host proximal intrusives. Mainly Py, Po, Cop, Au, WO₃ zones. Several geo and mag anomalies on this trend remain untested.

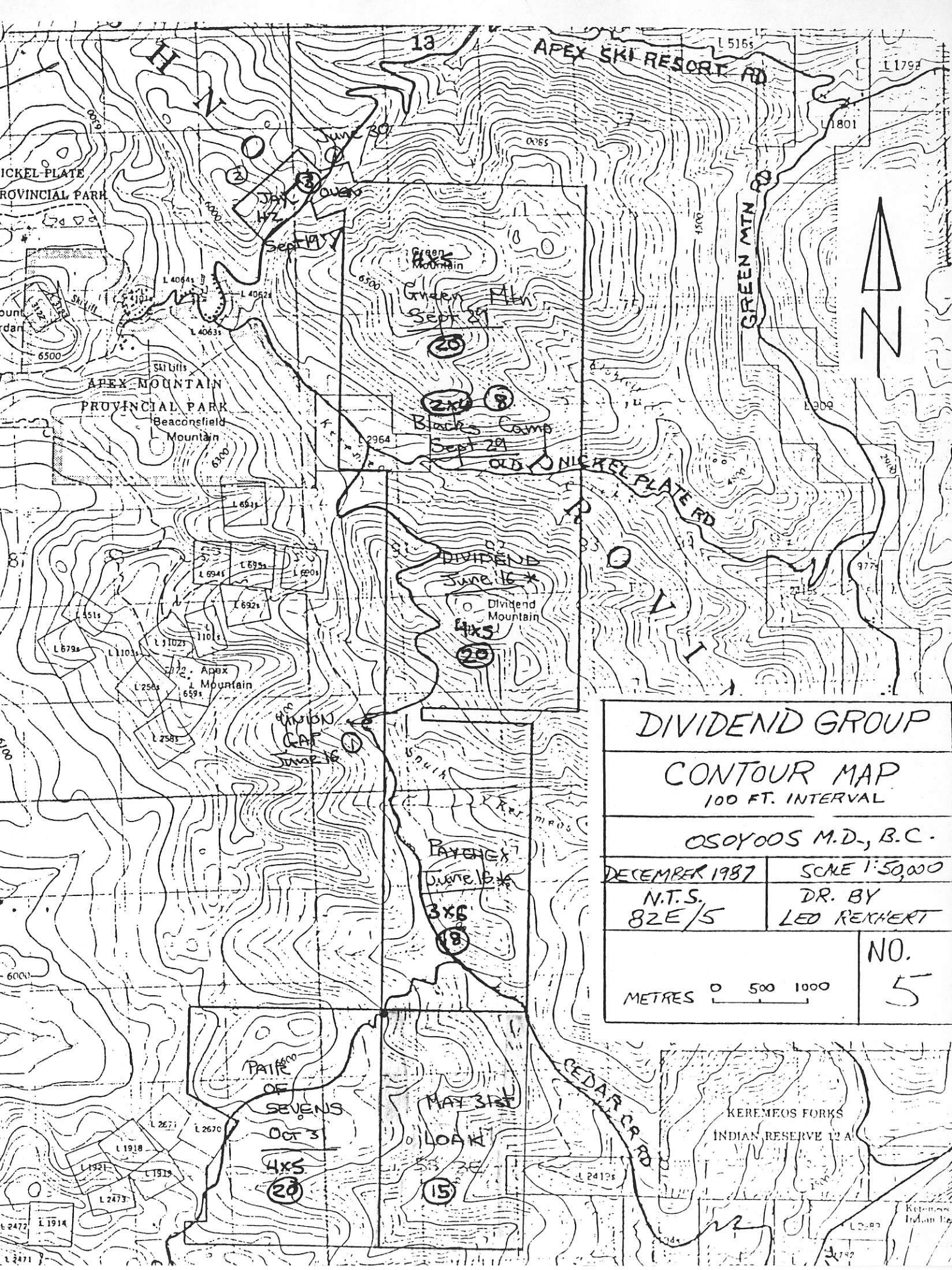
Dividend belt has numerous old workings from 1900 - 1910 period with few recent results. Old Assays report \$20 per ton Cu, Au at 1903 prices. Soil anomalies up to 960 ppb reported on SE side of Dividend property. We traced mineralization for 1500' on surface.

Green Mountain, maybe extension of Apex group again has numerous old workings. A huge gox oxide zone is reported. Numerous Mag features and gold assays to 5+ oz/t have been reported.

Several
Pods of skarn mineralization consist of Po, Py, Cpy
with strong peripheral hornfelsing. Cu reported up to
9%, Au to 14 oz/t and WO_3 to 1.5%.

The area appears active throughout but no
detailed compilation is available and no drilling is
reported.





DIVIDEND GROUP

CONTOUR MAP
100 FT. INTERVAL

OSOYOOS M.D., B.C.

DECEMBER 1987

SCALE 1:50,000

N.T.S.
82E/5

DR. BY
LEO REICHERT

METRES 0 500 1000

NO.

5

OFFICE STATISTICS—GRAND FORKS MINING DIVISION.

Free miners' certificates	427	\$2,070 25
Companies' "	3	300 00
Special "	6	90 00
Certificates of work	580	1,501 00
Records of location	177	442 50
Conveyances	137	360 20
Certificates of improvements	51	127 50
Permission to re-locate	1	12 50
Filings	70	17 50
Water rights	2	46 50
Miscellaneous			308 30
Fees for Crown grants passed through this office			1,275 00
			\$6,560 25

OSOYOOS MINING DIVISION.

REPORT OF C. A. R. LAMBLY, GOLD COMMISSIONER.

I have the honour to submit herewith my annual report of the mining operations in the Osoyoos Mining Division for the year 1902.

OLALLA AND KEREMEOS CREEK CAMPS.

The principal work done on this group consists of a tunnel 600 feet in Bullion Group. length, intended to open, at a depth of about 700 feet, the large ore-body which surface exploration has disclosed upon the property. During September two cross-cuts were started upon veins cut by the tunnel, and in each case promising ore-bodies were opened, the ore assaying up to \$9 per ton in gold and copper. On October 1st. a second tunnel was started, and is now in 90 feet.

This group is owned by Jas. Riordan and W. J. Brewer, and consists Flagstaff Group. of the *Flagstaff*, *Searchlight*, *Copper Kettle No. 1*, *Nevada* and *McDougall* claims. Surface work has exposed a large body of self-fluxing ore. An outcropping of magnetic iron, traversing the property in an easterly and westerly direction, is heavily copper-stained, and at different points shows copper pyrites. A strong quartz vein cuts through this iron cap, and can be traced for over 400 feet.

On the *Flagstaff* there occurs another large body of ore, having a north and south trend, and consisting of lime and feldspar carrying bornite. The work during the year consists of open surface cuts and shallow shafts, done with the intention of determining the best point from which to drive a tunnel. Assays from this group run from a few dollars up to \$30 per ton.

The *Opulence Group* consists of the *Smelter Fraction*, *Swansea* and *Hardscrabble Fraction*. The principal ore-body occurs on the *Opulence*, where a vertical shaft sunk 45 feet discloses a large amount of native copper ore.

The *Elkhorn Group* consists of the *Elkhorn*, *Homestead*, *Hillside*, *Surprise*, *Iron King* and *Olalla* claims. The entire group has been surveyed and is now being Crown-granted. The ore is copper pyrites and occurs along a contact between quartzite and lime. Values run as high as \$30 per ton.

ASSESSMENT REPORTS FOR
LOAK DIVIDEND

- # 803 Cominco, 1965
Magnetic survey fluxgate
w/ showings pghr, cpy - Poor
- # 1803 Apex Mining + Expl. Co, 1968
Airborne Mag - Poor
- # 3916 New Northcal Mines Ltd, 1972
GEOLOGY + MAG
Poor
- # 3918 GEOPHYS + GEOCHEM 1972
M.K. Lorimer
Mag. + Cu Soils
Large Cu anom. 150-500 ppm on
SE Side of Green Mtⁿ
- 4794 Cu Soils
- # 5199 Dividend Claims 1974 Airborne Mag
DR Cochrane
Southcan Mining Ltd
1900 MMAR
Many old workings reported - 1905 BCMR
Some List of Dividend Group
not bad mag map

5574 Southcan Mining Ltd
D.R. Cochran, 1975
Soil survey

Cu 12-2600 ppm
Au <100 ppb not considered anom.
950 ppb Au in soil noted

10,092 GEOPHYSICS
DIVIDEND PROP
George + Leo Reichart
D. Brownlee - author 1982

Seds bounded by vales
7 samples taken .1 - .44 % Cu
.03 - .05 oz/t Ag
.01 - .02 oz/t Au
up to .33 % WO_3

Shaft + trench locations on Dividend Mt^N

14,743 Peak Project 1987
Siemant Res. Ltd.
Frank Di Spirito

VLF, Mag, Geochem

not bad report shear zones silicified
high As w/ to 4.07 g/t Au over 1.8M
covers NW corner of grid

15081

Oct 16 / 1986

Peter Peto
Geophys, Geological

Mapping + VLF
(now dividend ground)

11,954 Deanna D.T. Mehner

COMINCO LTD 1984

Marble + Skarn

4760 ppm Cu, 5 ppm Pb, 680 ppm Zn, 11.8 ppm Ag
880 ppm As, 200 ppm W, 326 oz/t Au

stratabound Au bearing pyhrotite

109 tons yielded 185 oz Au
54 oz Ag

12,918 — Map From 1518 lbs Cu — Deanna, Acacia

Hex claims by Cominco
1984 David Mehner

Contour sampling 1393 soils
only 23 > 45 ppb Au
20 > 100 ppb