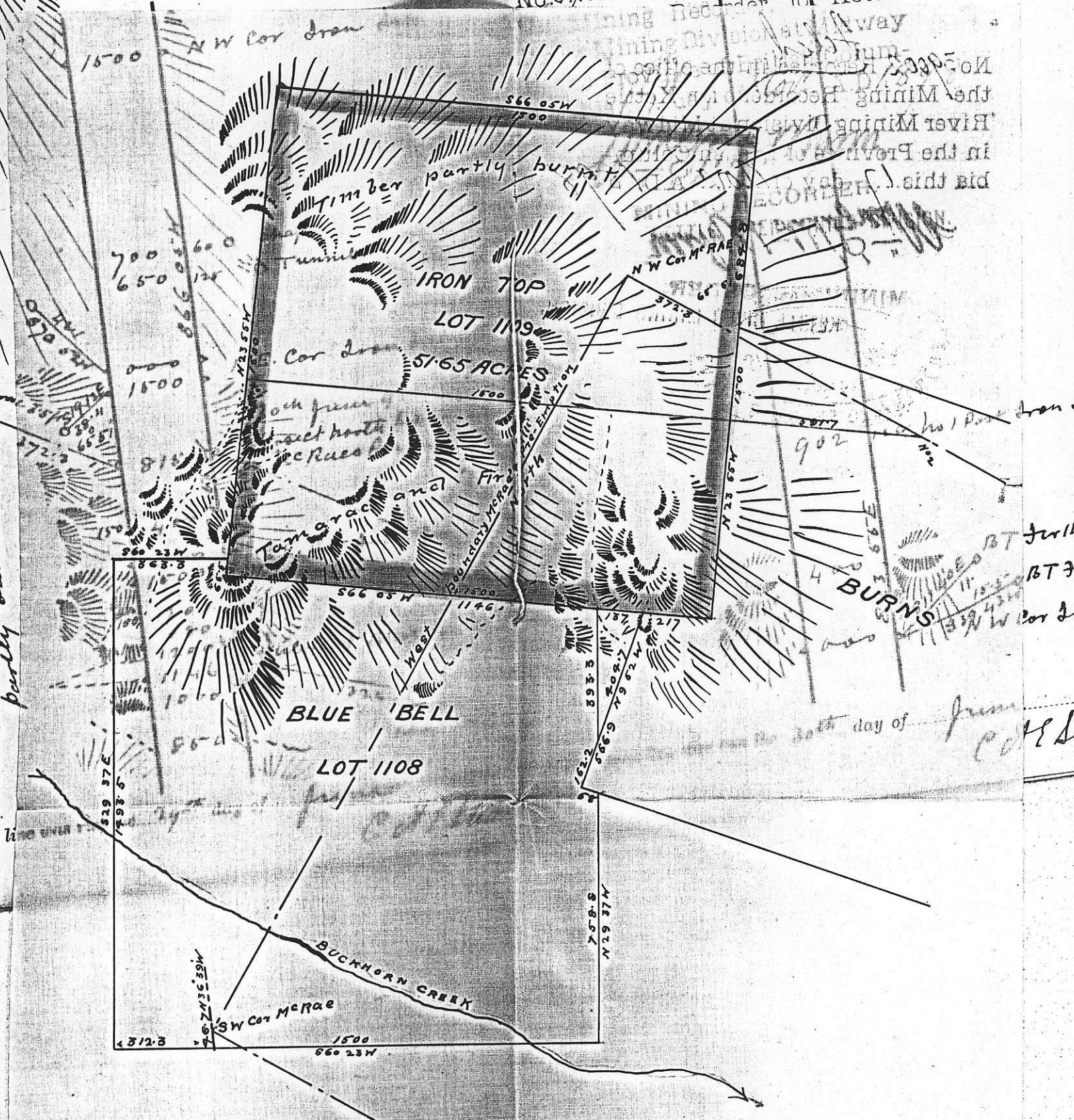
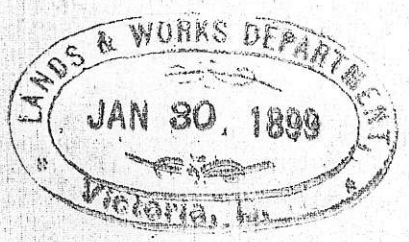


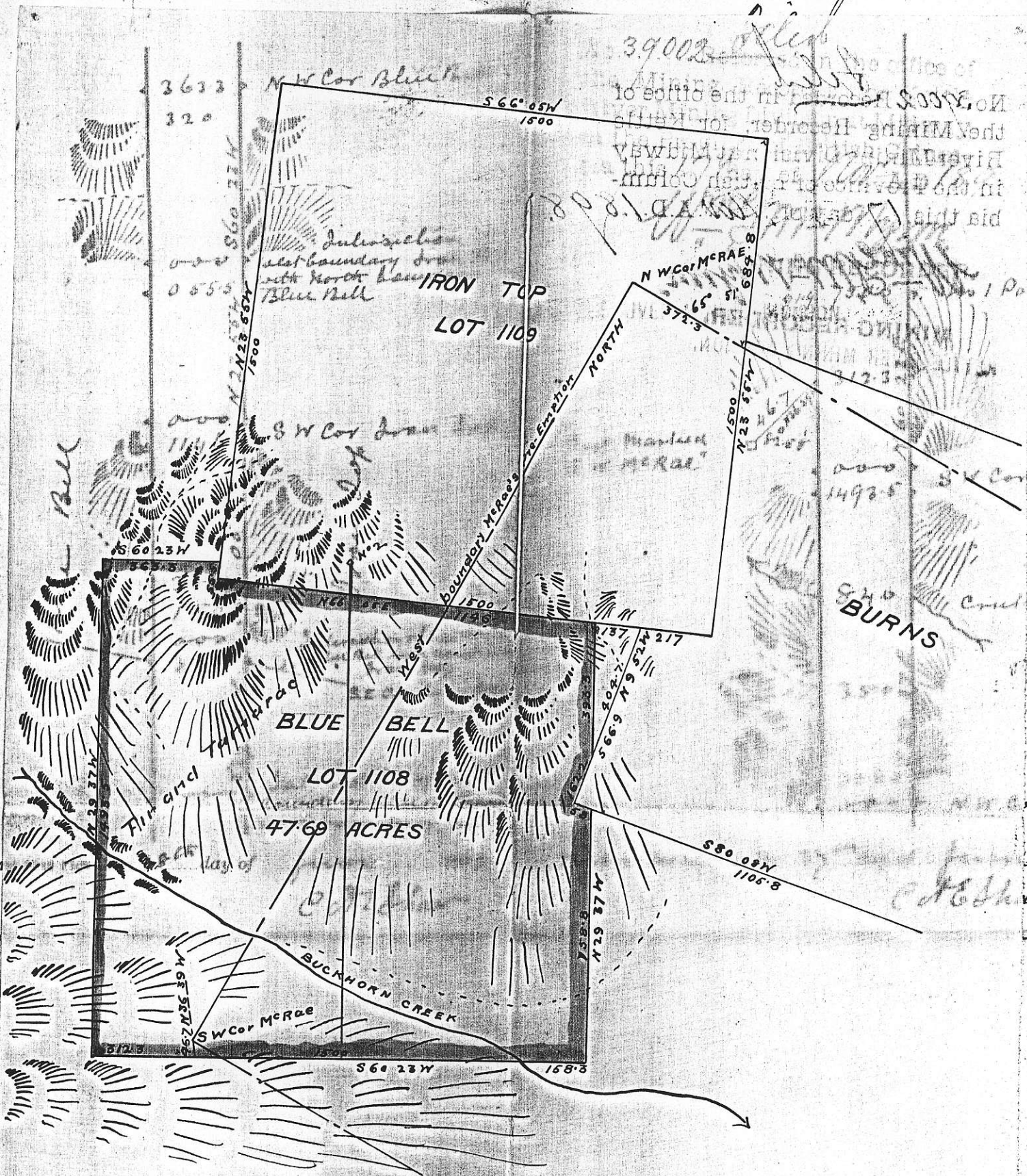
No. 39,002 *Filed* Recorded in the office of  
Mining Recorder for Kettle  
River Mining Division



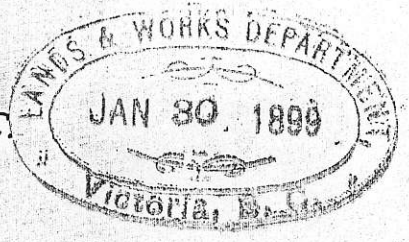
PLAN OF  
 "IRON TOP"  
 Mineral Claim  
 Deadwood Camp  
 Kettle River Mining Division B. C.  
 Scale  
 400' = 1 Inch  
 C. F. SHAW PLS.



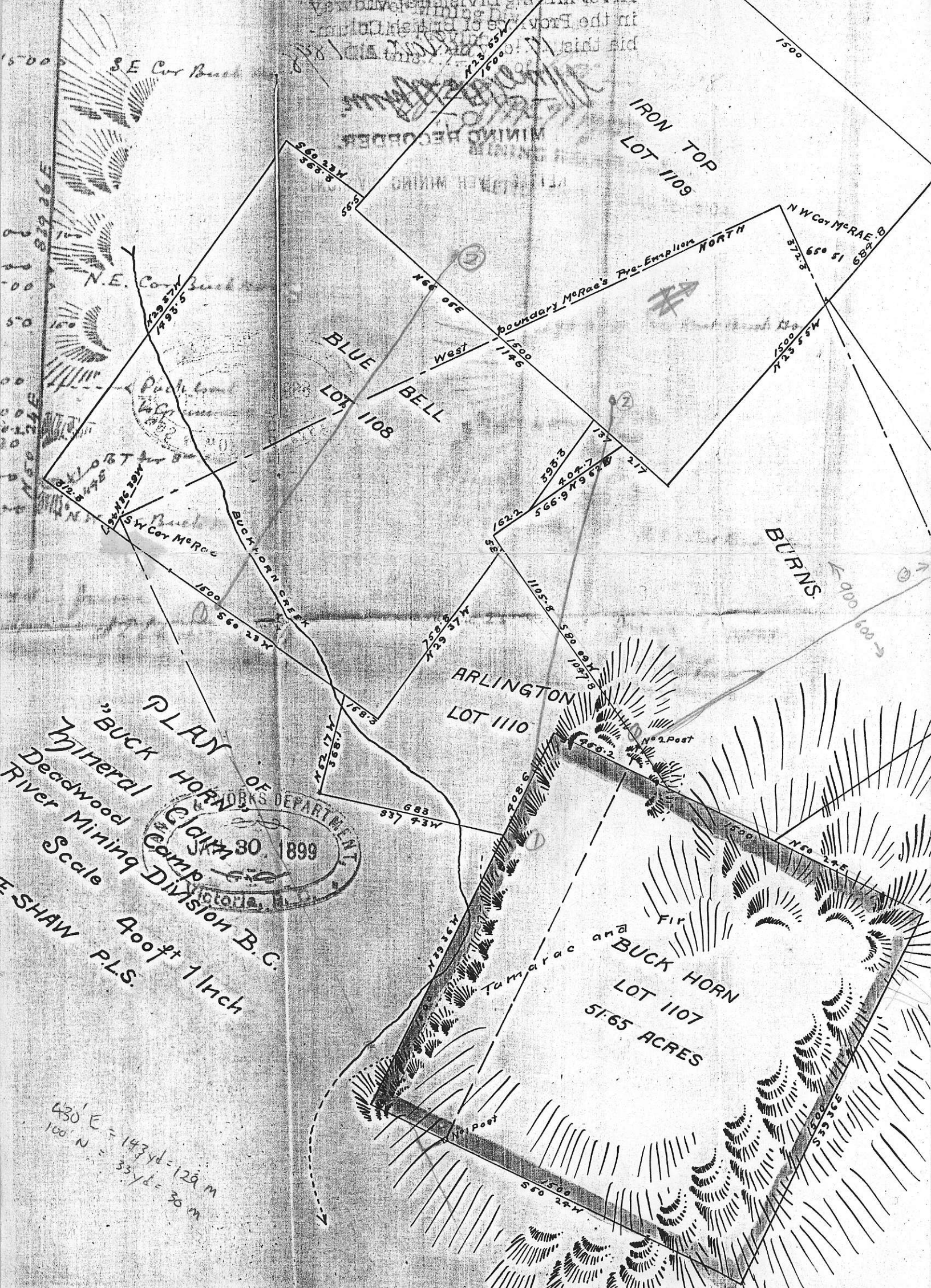
39002



PLAN OF  
 "BLUE BELL"  
 Mineral Claim  
 Deadwood Camp  
 Kettle River Mining Division B. C.  
 Scale  
 400<sup>+</sup> ft = 1 inch  
 C. E. SHAW PLS.



No. 2000  
the Mining Recorder  
River Mining Division  
in the Province of British Columbia  
this 10th day of July 1899



PLAN OF DEPARTMENT OF MINES B.C.  
Claim 30, 1899

BUCK HORN  
General Claim  
Deadwood Camp  
River Mining Division B.C.  
Scale 400ft 1 inch  
E. SHAW PLS.

430' E = 143 yd = 129 m  
100' N = 33 yd = 30 m