

MEMORANDUM

To: Ian Pirie
From: Dave Heberlein
Copies: Property File
Date: February 1, 1993
Subject: Summary of Work - Rainbow Tam O'Shanter Property

Ian, here is the summary of work completed on the Rainbow Tam O'Shanter Property between 1990 and 1992.

1992:

Diamond Drilling - 15 holes, 2239m	Deadwood Grid
Soils - 396	
Mag and IP - 1.9km	
Line Cutting - 8.6km	

41 holes
9 trenches

1991:

Diamond Drilling - 19 holes, 2594.5m	Tam91 Grid
Soils - 1802	Rain91 and Tam91 Grids
Litho's - 224	Tam91 Grid
Assay - 100	
IP - 33.5km	Tam91 Grid
Mag and VLF - 45.05km	Tam91 Grid
Line Cutting - 56.65km	Rain91 and Tam91 Grids

1990:

Diamond Drilling - 7 holes, 1171m	Midway Area
Trenching - 9 Trenches, 411m	Midway Area
Soils - 2189	Murray Option
Litho's - 272	Murray Option
Assays (Trench and DDH) - 374	
Mag and VLF - 45.8km	Murray Option
Line Cutting - 52.3km	Murray Option

1.0 INTRODUCTION

General

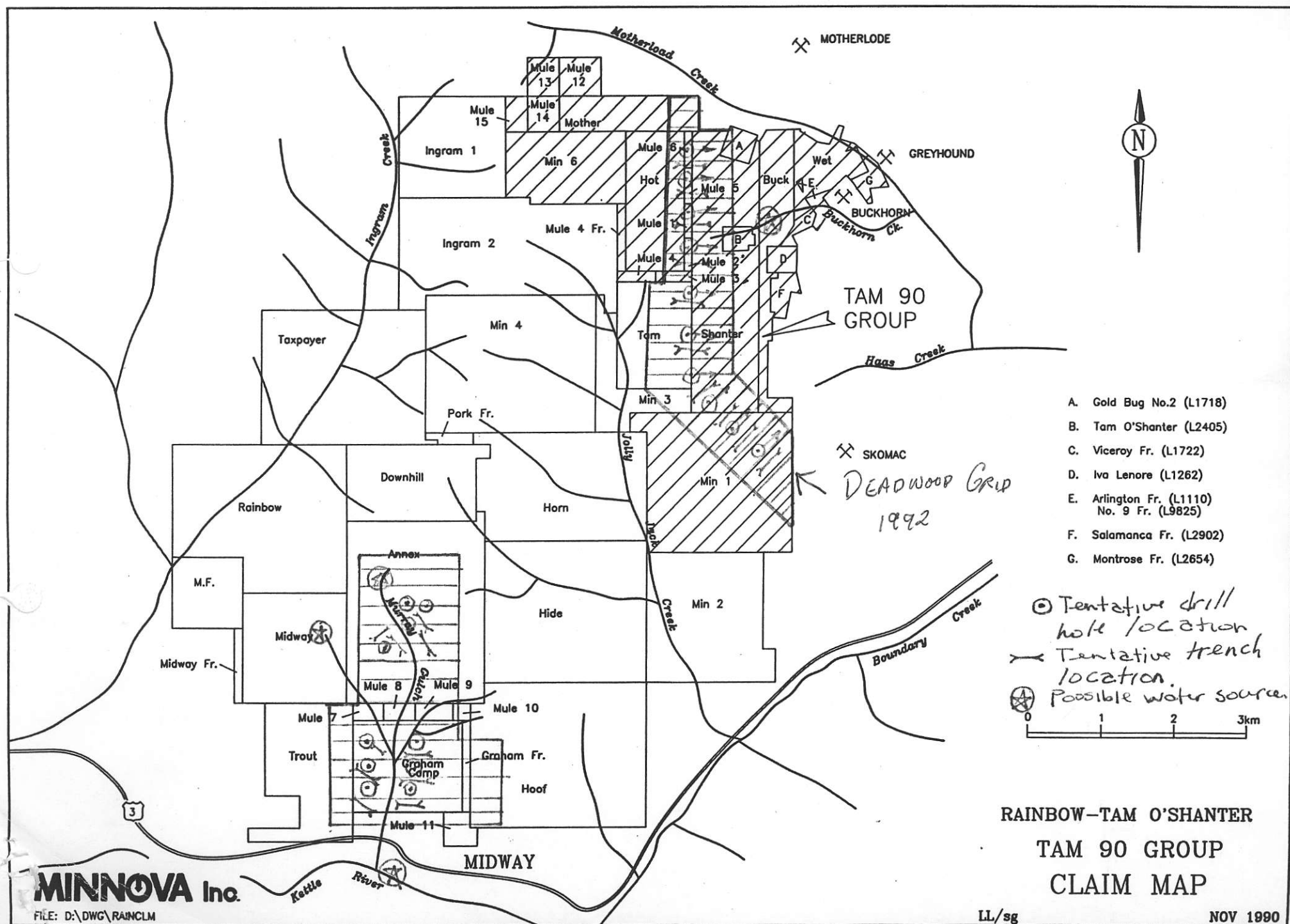
This report describes the results of DDH TM-24, DDH TM-25, DDH TM-26, DDH TM-28, and DDH TM-30, five "NQ" diameter diamond drill holes located on the Buck and Shanter claims of the Tam A and Tam B Groups. A total of 774.95 meters was drilled in these four holes. Drilling was carried out between March 22 and April 23, 1992 and these holes were part of a larger 7 hole drill program on the Buck and Shanter claims. The focus of the program was to assess the potential of the property for vein and disseminated Au mineralization, in particular to test the extent of a Au anomaly intersected in 1991 drilling.

Property Location and Access

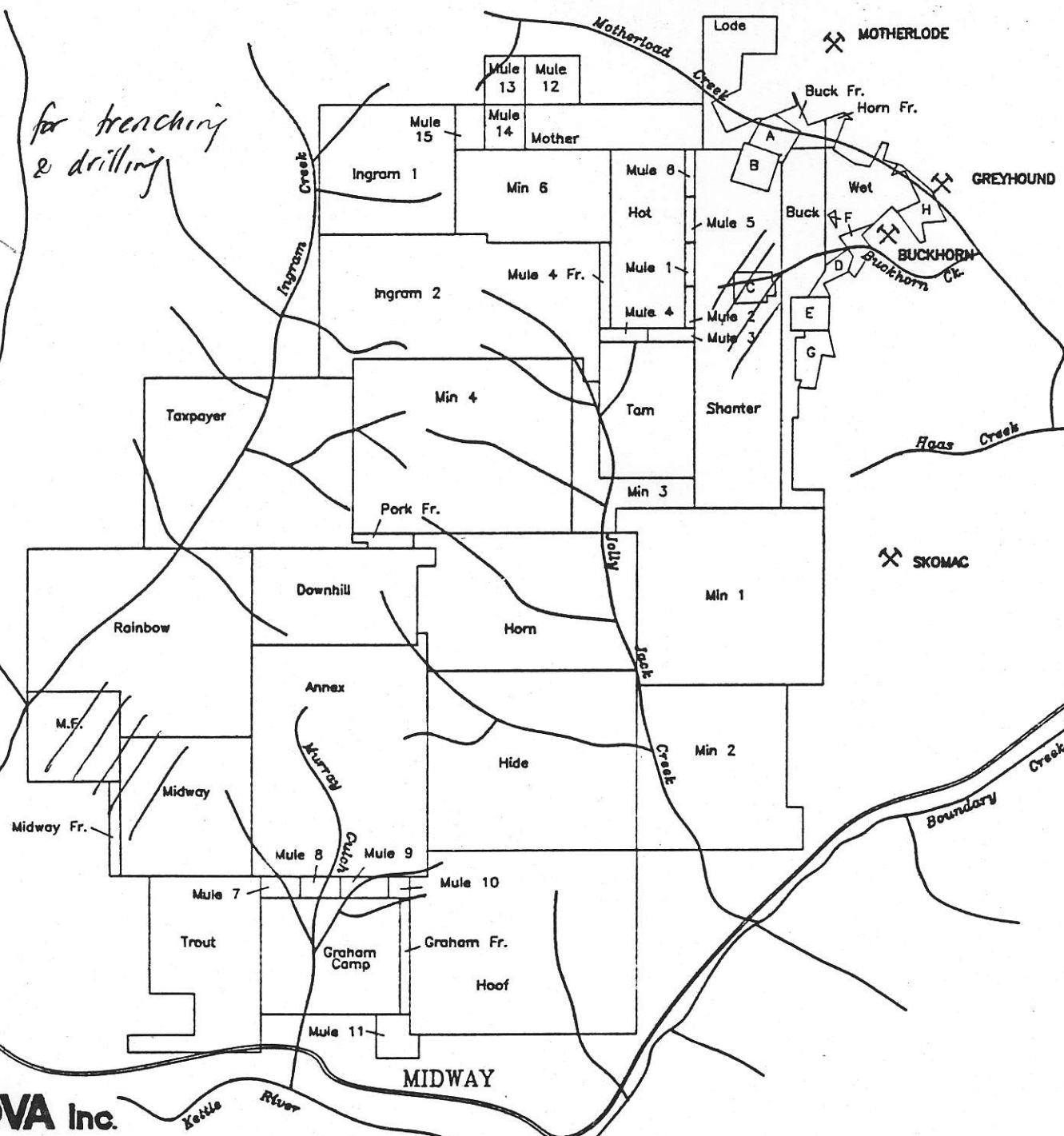
Tam A and B Groups are situated within the Greenwood Mining Division at Latitude 49° 02' 00" North, and Longitude 118° 45' 00" West on NTS 82E/2E+2W (Figure 1 and 2). This is approximately 6 km to the west/southwest of the city of Greenwood, B.C.. Access to the claims is via the Deadwood Road to the west of town. This road is kept in excellent repair as it is the road to the garbage dump. Approximately 2 km from town an old, well maintained logging road branches off from the Deadwood Road to the west-southwest. This road is followed for approximately 4 km until a fork is reached. At this junction the Tam A and B Groups may be accessed by taking either the north or the south fork, leading to a network of old logging roads and skid trails (Figure 3). The southern part of the property may be accessed from the town of Midway via a network of logging and logging roads that lead northerly from Highway 3 up Dry Gulch and Ingram Creek.

Topography, Vegetation, and Climate

Topographic relief is extreme in areas, generally ranging from 600

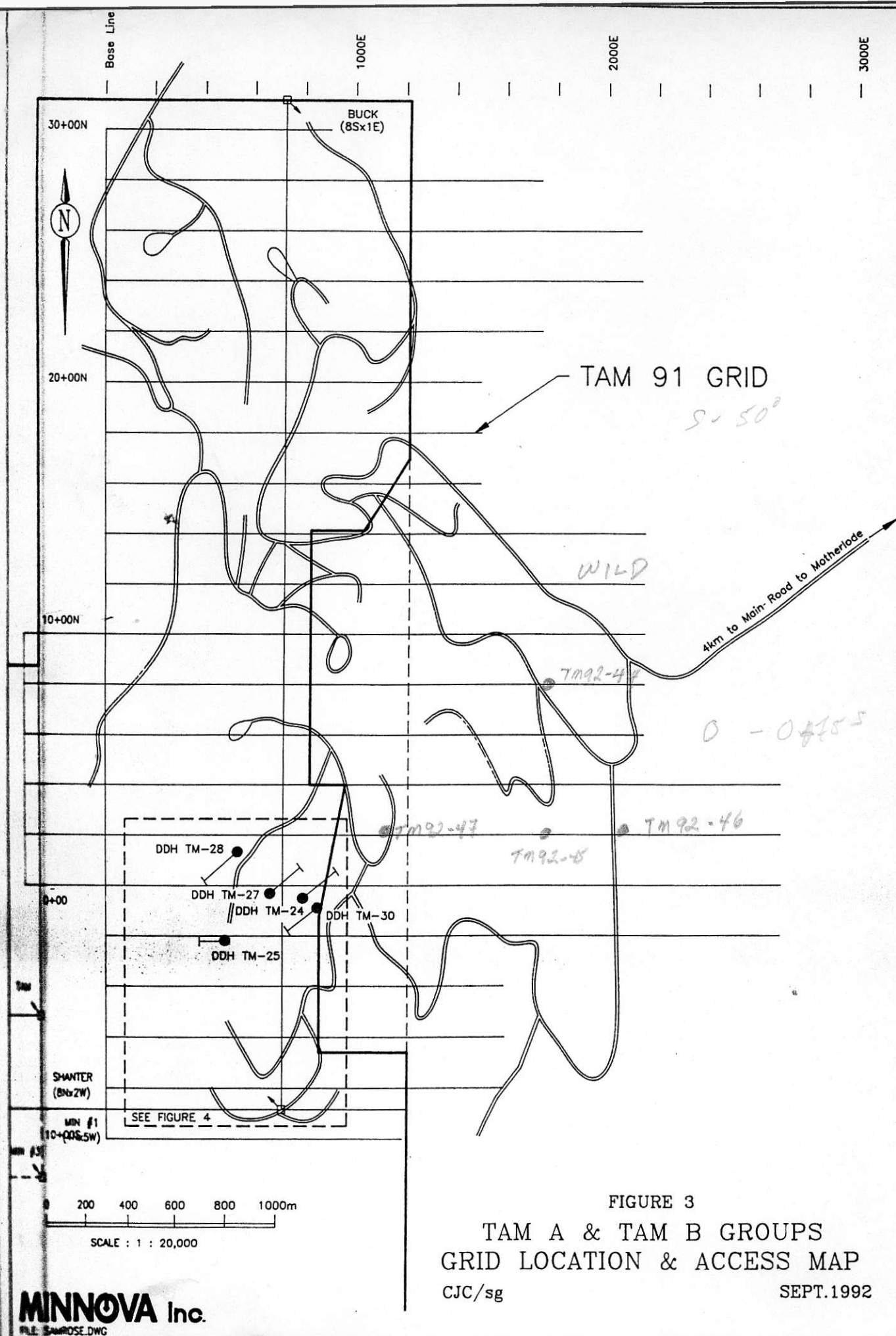


area for trenching & drilling



- A. Little Buffalo Fr.(L1717)
- B. Gold Bug No.2 (L1718)
- C. Tam O'Shanter (L2405)
- D. Viceroy Fr. (L1722)
- E. Iva Lenore (L1262)
- F. Arlington Fr.(L1110)
No.9 Fr.(L9825)
- G. Salamanca Fr. (L2902)
- H. Montrose Fr. (L2654)

RAINBOW-TAM O'SHANTER
RAINBOW 89 GROUP
CLAIM MAP



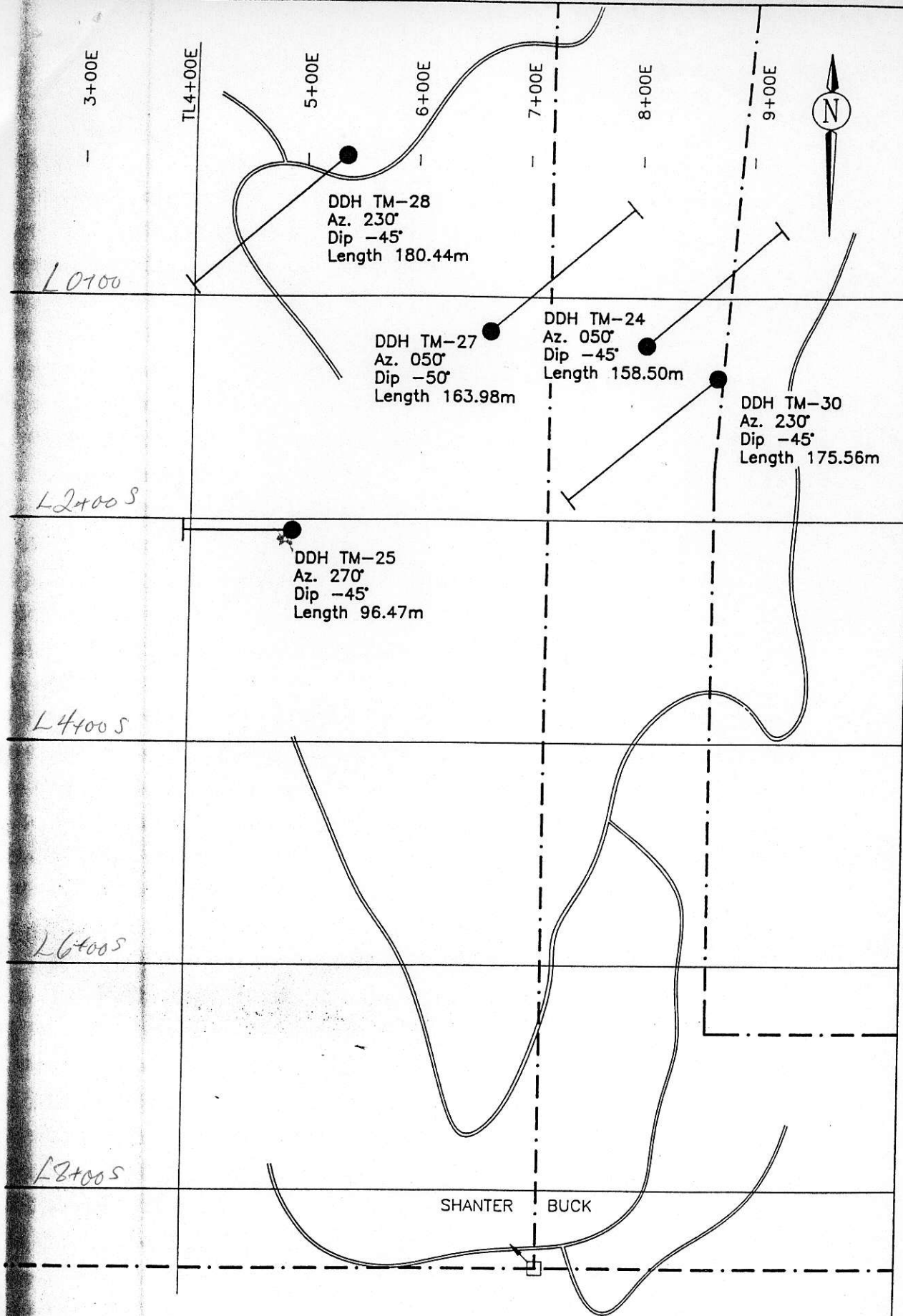
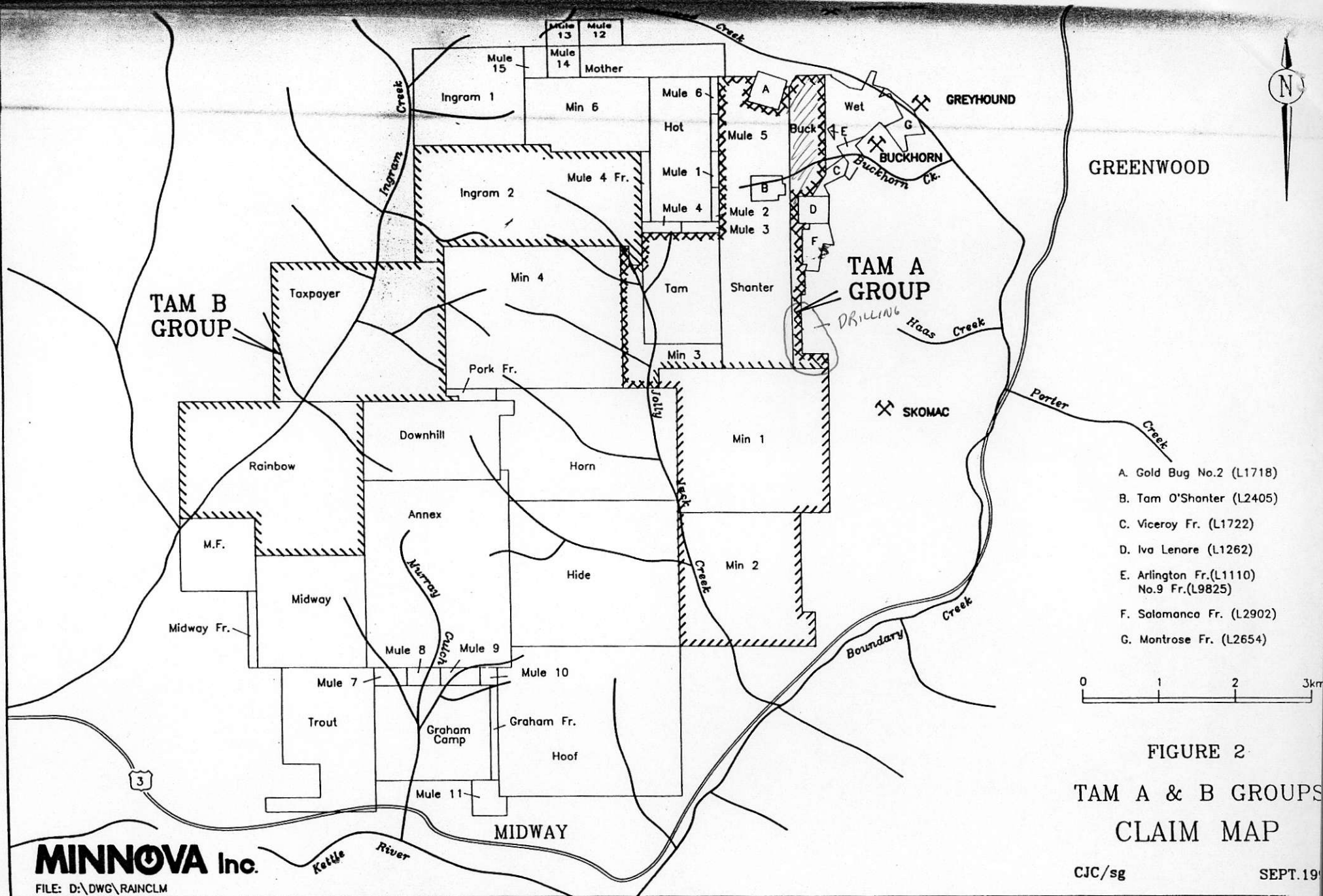


FIGURE 4
TAM A & B GROUPS
DDH TM-24, TM-25, TM-27, TM-28, TM-30
LOCATION MAP

CJC/sg

SEPTEMBER 1992



MINNOVA Inc.

FILE: D:\DWG\RAINCLM