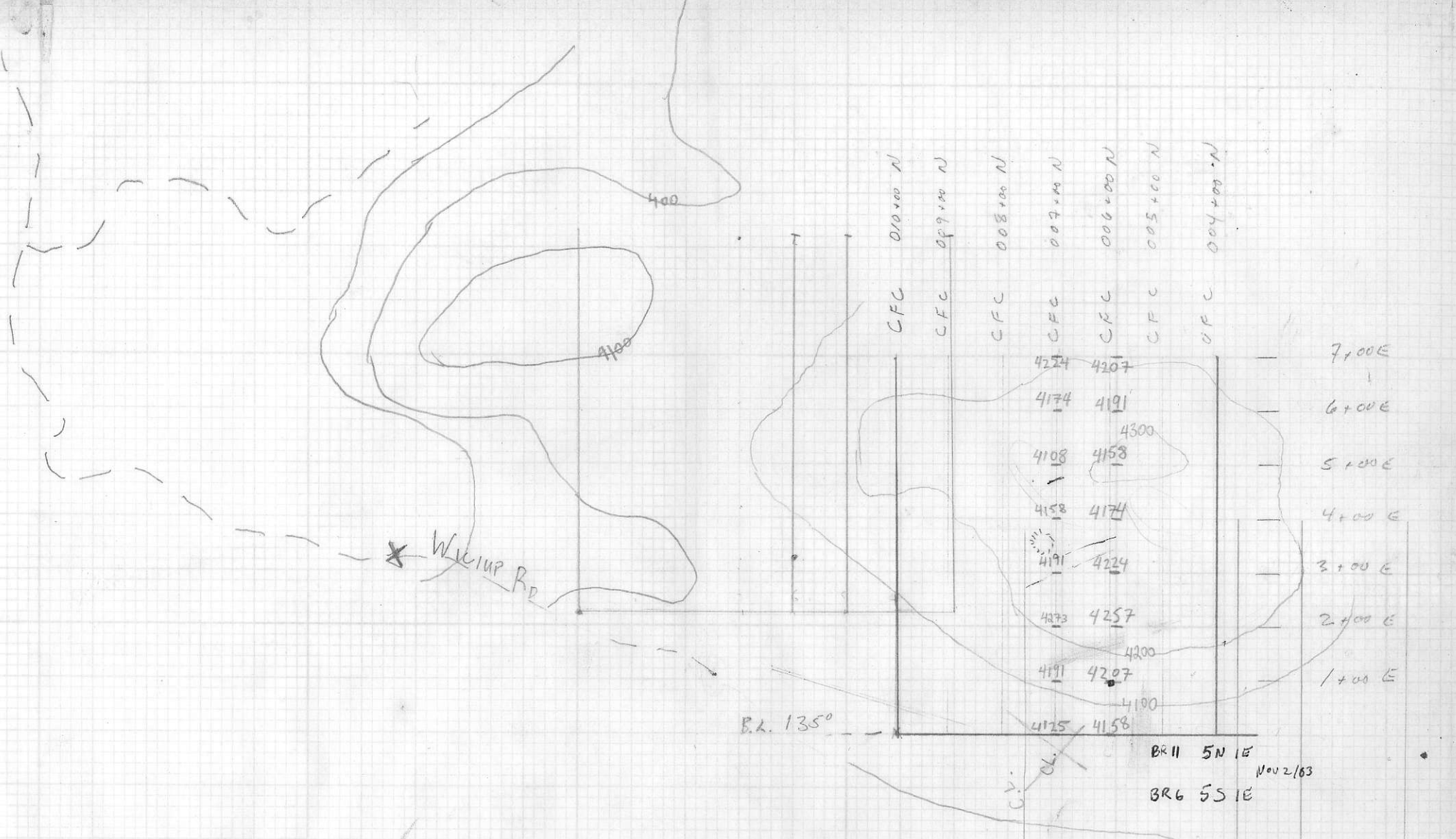


SLOPE CORRECTIONS. (TOPO x A)

SLOPE (°)	A		A
20	0.94	55	0.57
25	0.91	60	0.50
30	0.87		
35	0.82		
40	0.77		
45	0.71		
50	0.64		

(Topo x A) = 0.57 x 55 = 0.3135
 0.94 x 55 = 0.517
 0.91 x 55 = 0.5005
 0.87 x 55 = 0.4785
 0.82 x 55 = 0.451
 0.77 x 55 = 0.4235
 0.71 x 55 = 0.3905
 0.64 x 55 = 0.352

824559
Wikip Road



SLOPE CORRECTIONS (TOPOFILM MEASUREMENT * A)

SLOPE (°)	A
20	0.94
25	0.91
30	0.87
35	0.82
40	0.77
45	0.71
50	0.64
55	0.57
60	0.50

550	4200
575	575
605	600
632.5	625
660	650
687.5	675
715	700

350 at 152°

BR 11 5N 1E
NOV 2/63
BR 6 5S 1E