

82M/4 Property Examination -
INMET MINING CORPORATION Larry
3rd Floor, 311 Water Street Ovington Pky.
Vancouver, B. C. 824458
V6B 1B8
Phone (604) 681-3771
Barriere PONGO

facsimile transmittal

To: COLIN BURGE Fax:
From: IAN MORRISON Date: MAY 11 2000
Re: PONGO Pages: 5
CC:

Urgent For Review Please Comment Please Reply Please Recycle

WITH APOLOGIES FIRST FROM
CHEMEX (SHORT STAFFED, EASTER
HOLIDAYS ETC) THEN FROM
ME (FRANK IS HERE!) HERE
AT LONG LAST ARE THE PONGO
NUMBERS FOR YOUR REVIEW
AND QUALIFICATION. LARRY
HAS BEEN A PEST.
CHEERS.

INMET

MINING

Minera Inmet Perú S. A.

Bello Horizonte 103
 Chacarilla del Estanque
 San Borja
 P.O. Box 18-0465
 Lima 18, Perú
 Tel: (51 1) 372 0433
 (51 1) 372 0436
 Fax: (51 1) 372 0443

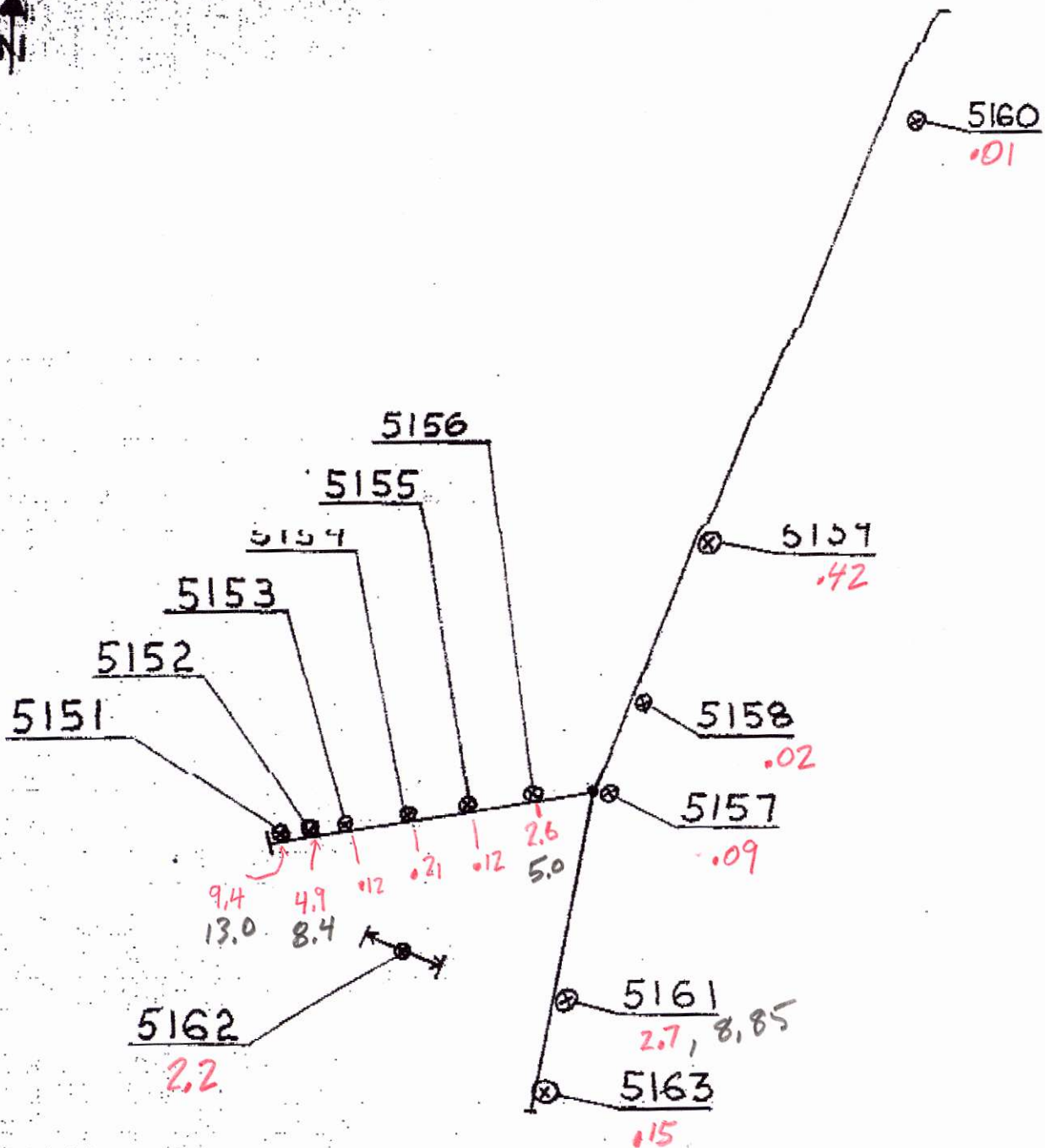
Fax Transmission

To :	IAN MORRISON	Fax :	
Company :	INMET VAN.	C.C. :	
From :	COLIN BURGE	Date :	11 - May
Subject :	PONGO	Reference :	
Fax :	(511) 372 0443	Total number of pages including cover : 1 + 1	
e-mail :	inmetperu@lullitec.com.pe		

Hi Ian

Thanks for sending that stuff down. Frankly I'm quite surprised at the grades given the amount of sulphide I saw at Pongo. The distribution supports the interpretation of a single "horizon" wrapped around the andesite "nose" at sample 5154.

Maybe we should drill a short
 Son hole with a hydraulic core under the
? Best regards to Larry (+ his dog)



LOCATED
10m South
↓ ⊗ 5164

NSV

INMET MINING CORP
PONGO SAMPLES
SCALE 1:200
0 ————— 5m
CB 04/00

A0017271 - PARTIAL

CLIENT : "INMET MINING CORPORATION

of SAMPLES : 14

DATE RECEIVED : 24-APR-2000

PROJECT : "BC RECCE

CERTIFICATE COMMENTS : "ATTN: COLIN BURGE / IAN MORRISON"

: " "

SAMPLE	999	386	301	312	318
DESCRIPTION	Au	Ag	Cu	Pb	Zn
	g/tonne	g/tonne	%	%	%
5151	9.42	285	0.46	13	6.77
5152	4.89	39.3	0.21	0.28	8.39
5153	0.12	2.4	<0.01	0.05	0.05
5154	0.21	1.2	<0.01	<0.01	0.05
5155	0.12	7.2	<0.01	<0.01	0.51
5156	2.55	98.4	0.1	1.86	5.01
5157	0.09	1.2	<0.01	<0.01	0.03
5158	<0.03	0.6	<0.01	<0.01	<0.01
5159	0.42	17.7	0.07	<0.01	0.46
5160	0.03	0.3	<0.01	<0.01	<0.01
5161	2.7	54.6	0.11	1.25	8.85
5162	2.16	94.5	0.17	3.96	1.15
5163	0.15	32.1	0.04	0.95	0.11
5164	<0.03	0.6	<0.01	<0.01	<0.01

BARRIERE LAKE

300 meters to Lake shore



TRENCH #2

P2

20-25° AT BASE OF LS.

KANTUJI SHOWING

P1

5°

TRENCH #3
-65°

GRAPHITIC ARGILLITE

LIMESTONE

DDH? -50°

P3

-65°

(CB RECLAIMED)

0 20 40 meters

LEGEND

WESTMIN DRILLING

Limestone with bluff

EXPOSURE

CHANNELS

T. M. PONGO

SCALE 1:1000

CB 20/4/00

PONGO SAMPLING

SAMPLE NO.	"TRENCH"	LOCATION	ROCK TYPE	COMMENT/ MINERALIZATION
5151	1	0m E	Graph Arg + Qtz ^{vnls}	10-15% Gn, Tr. Sph ^{Cp}
5152	1	1.3m E	Graph Arg + Qtz Vn	2-3% Gn, Tr Cp
5153	1	2.4m E	Qtz vn .15m	Tr. gn? (graph?)
5154	1	4.5m E	Andesite	10-15% Py Tr. fuch
5155	1	6.5m E	GRAPH ARG + Qtz ^{vnls}	Tr Cp
5156	1	8.2m E	GRAPH ARG	Tr - 1% Gn.
5157	1	10m E	GRAPH ARG + Qtz	
5158	2	3.5m N	GRAPH ARG + Qtz	
5159	2	9.0m N	GRAPH ARG + Qtz	5-7% Py.
5160	2	25.0m N	GRAPH ARG.	
5161	3	6.6m S	QTZ VN + silic. arg.	3-5% Gn, Tr Sph?
5162	DUPE OF NZ-2		ARG/TALUS/SOIL	3m channel
5163	3	9m S	GRAPH ARG + Qtz.	3-5% Gn.
5164	OUTCROP	35m S of Trench 3	SILIC'D LS. + GRAPH ARG	Barite?

NB. ALL SAMPLES ARE GRABS EXCEPT 5162