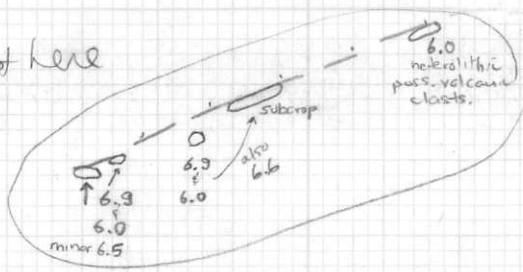
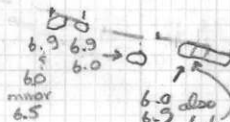


35' at 180
 100' at 216
 44' at 280'
 (samples)
 BR29-7047

not here



enclafred



didn't see this.



up here

4000

Orthoite
 perpendicular

this is right

6000

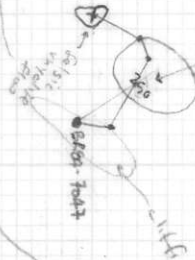
6000

4100

Jehon
 pyroclastic
 flow
 and
 scoria

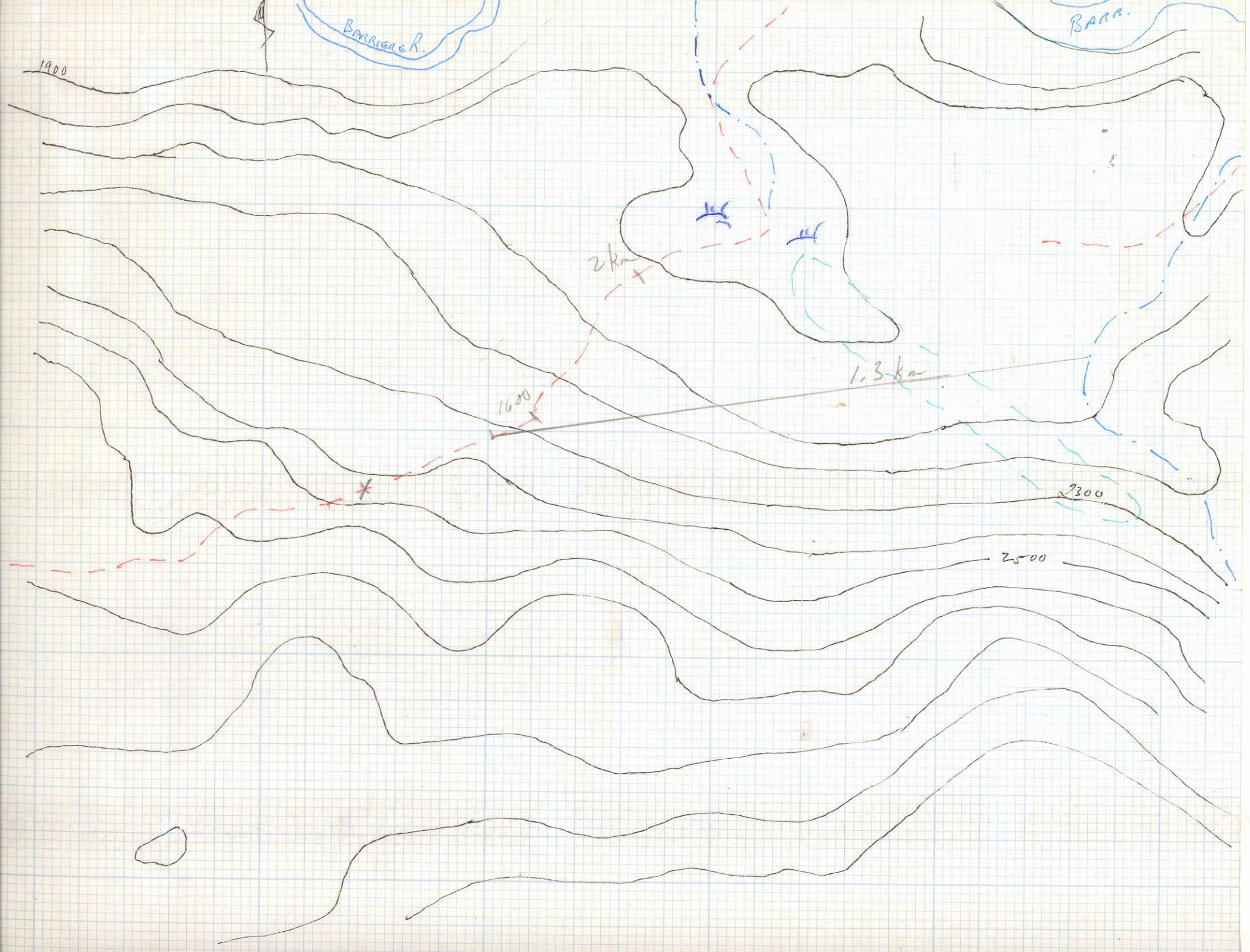
same as
 the
 volcanic
 or
 lower
 volcanic
 pyroclastic
 flow

BR29-7046



4200

4100





HIT ROAD @ 1387

EM

1km

7500

6057

1450

RIGHT ON DURANGO

3000

390

893

1287

6055 6056

6055-ft

3500

1070
33
2000
600

2500

3000

750m

330.0

3500

sm c

Cutting

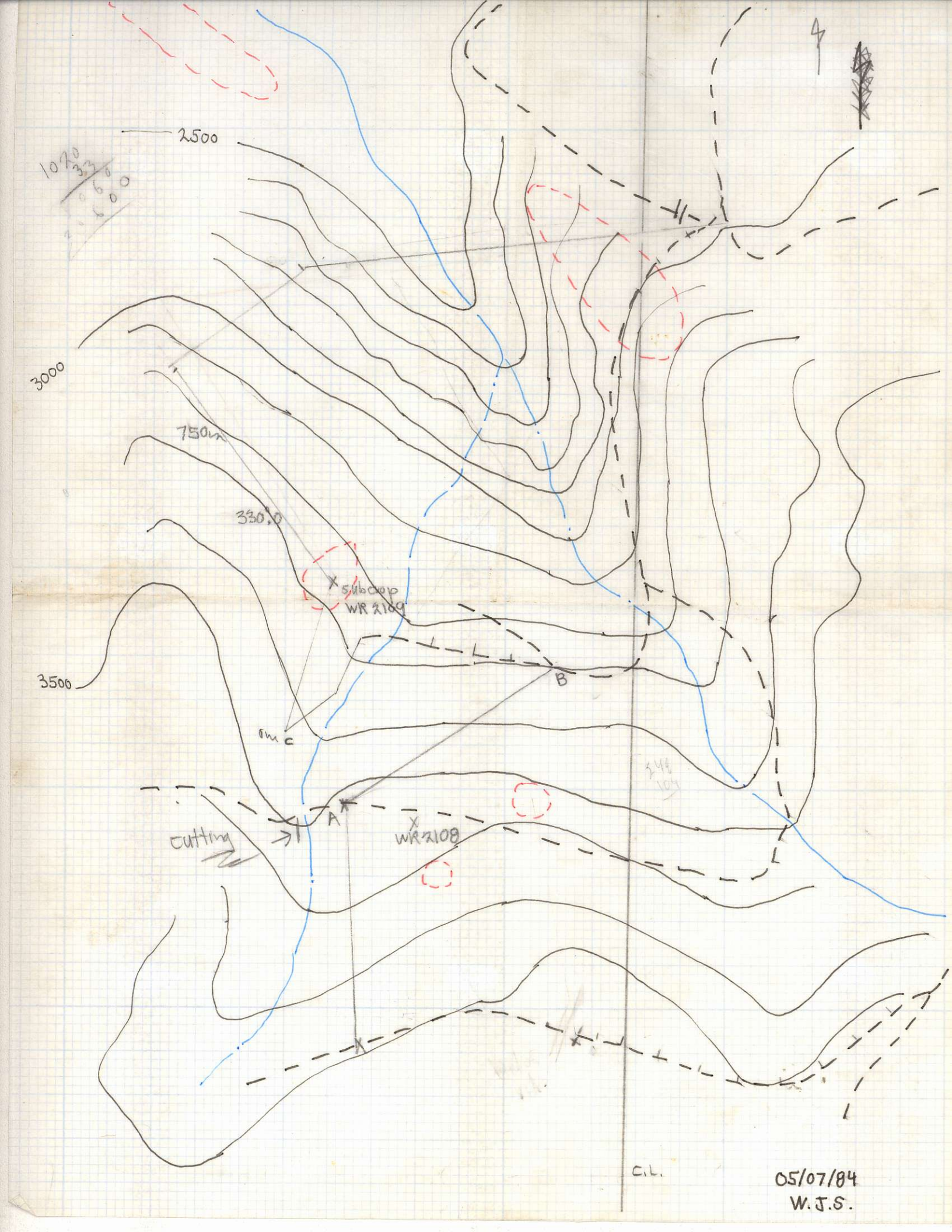
X 51600P
WR 2109

X
WR 2108

248
109

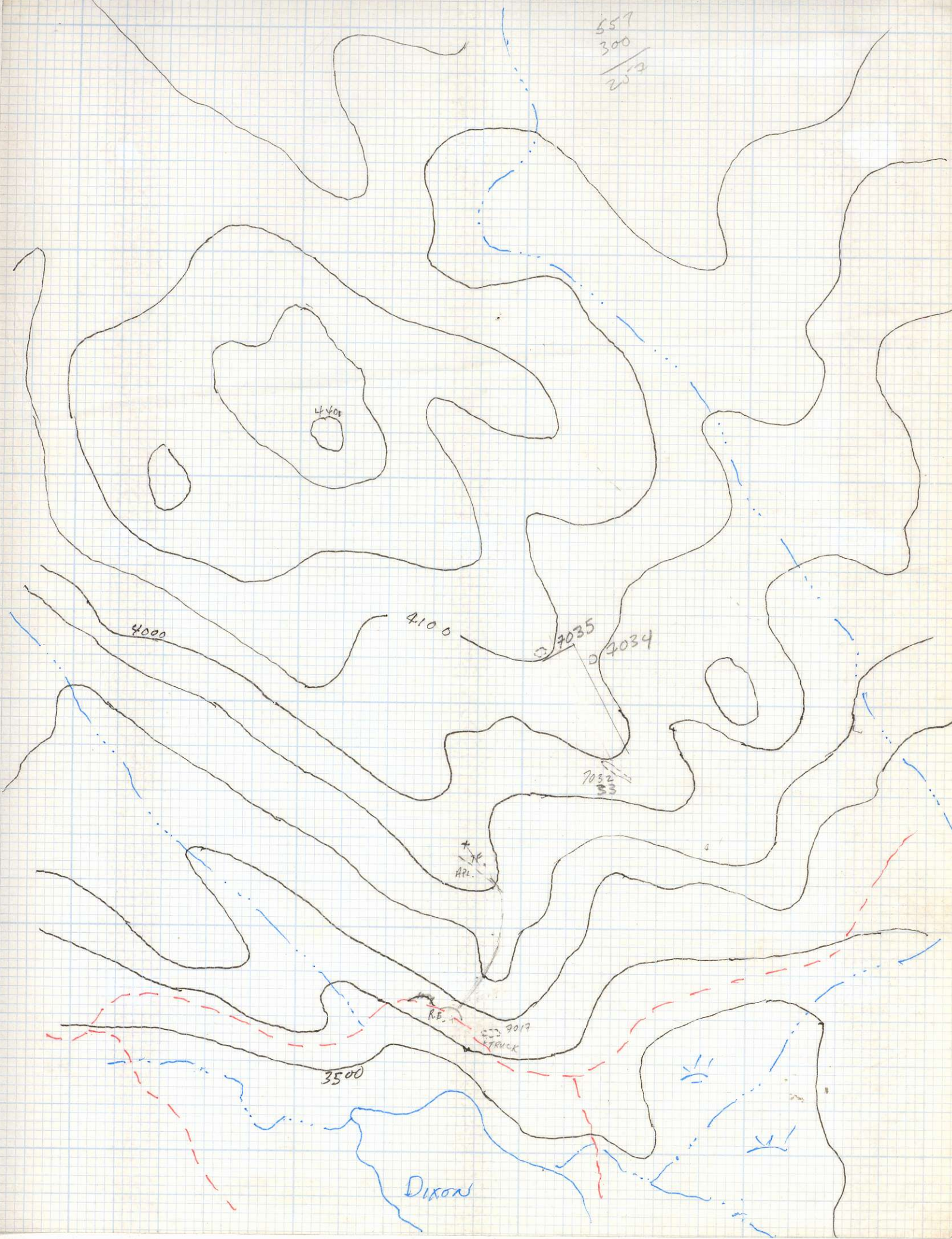
C.L.

05/07/84
W.J.S.



557
300

257



RV

4000

4100

7035

7034

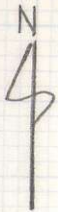
7032

3500

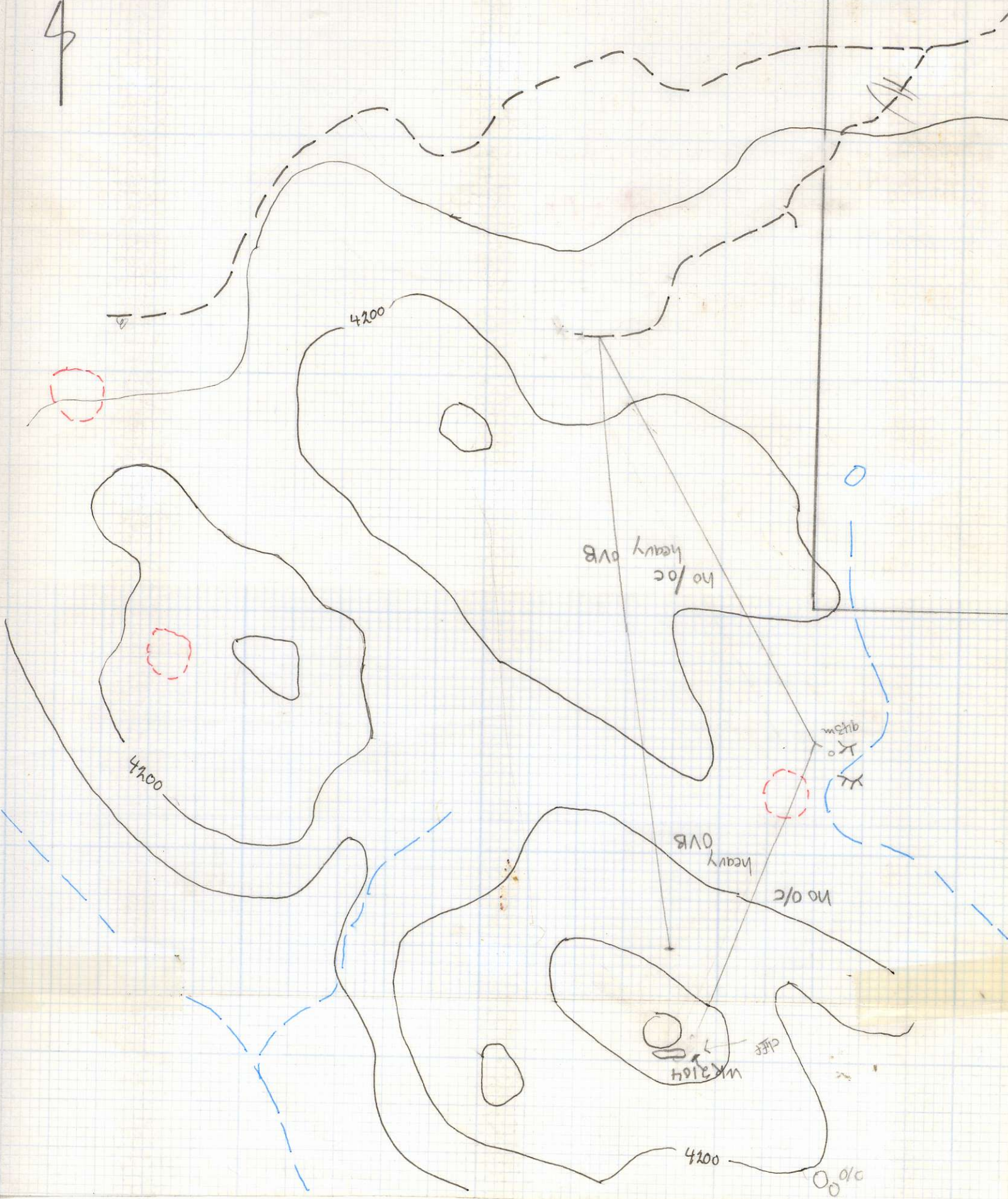
9019

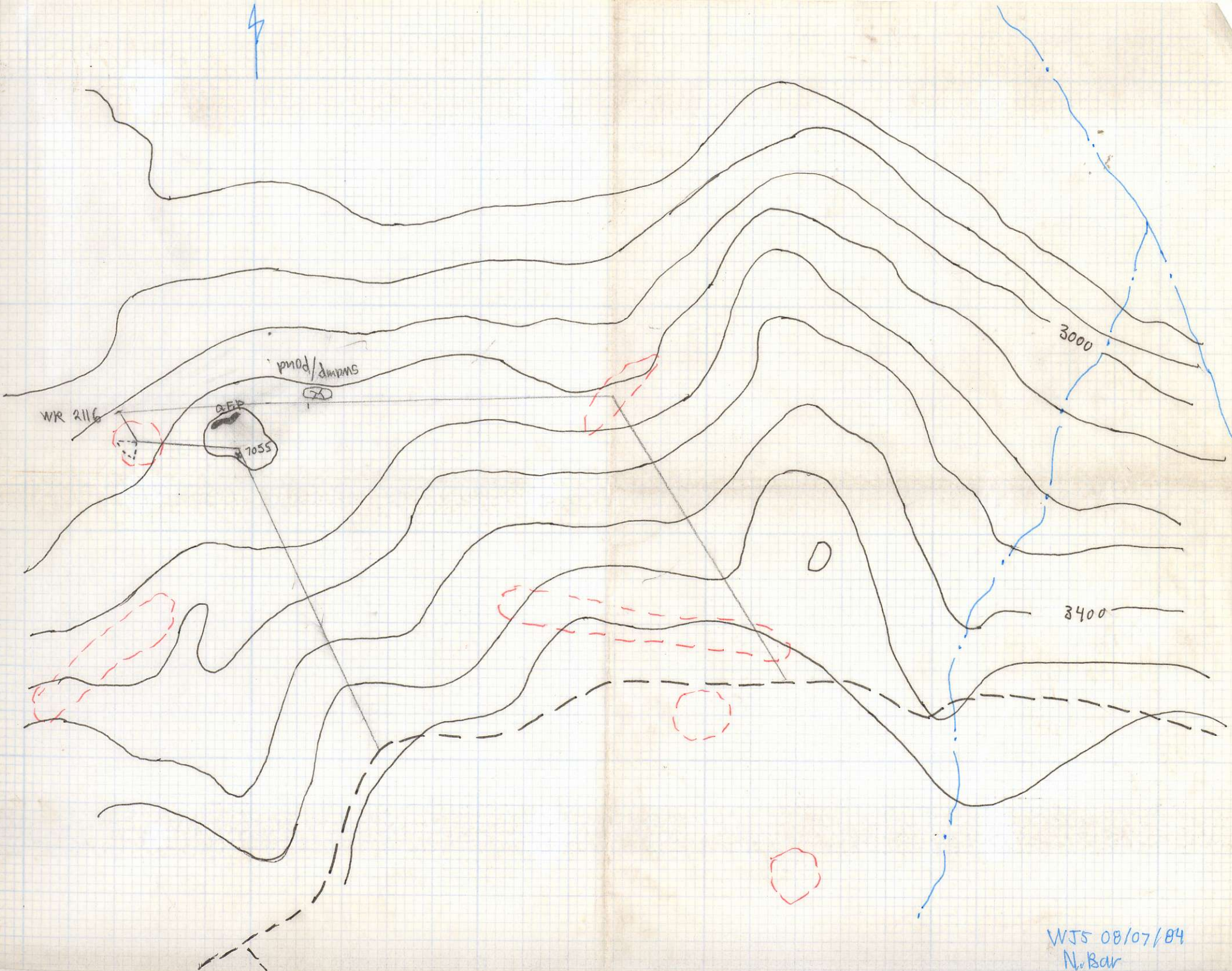
TRUCK

DIXON



CL





WJS 08/07/84
N. Bar

