





LITTLE DIXON  
LAKE

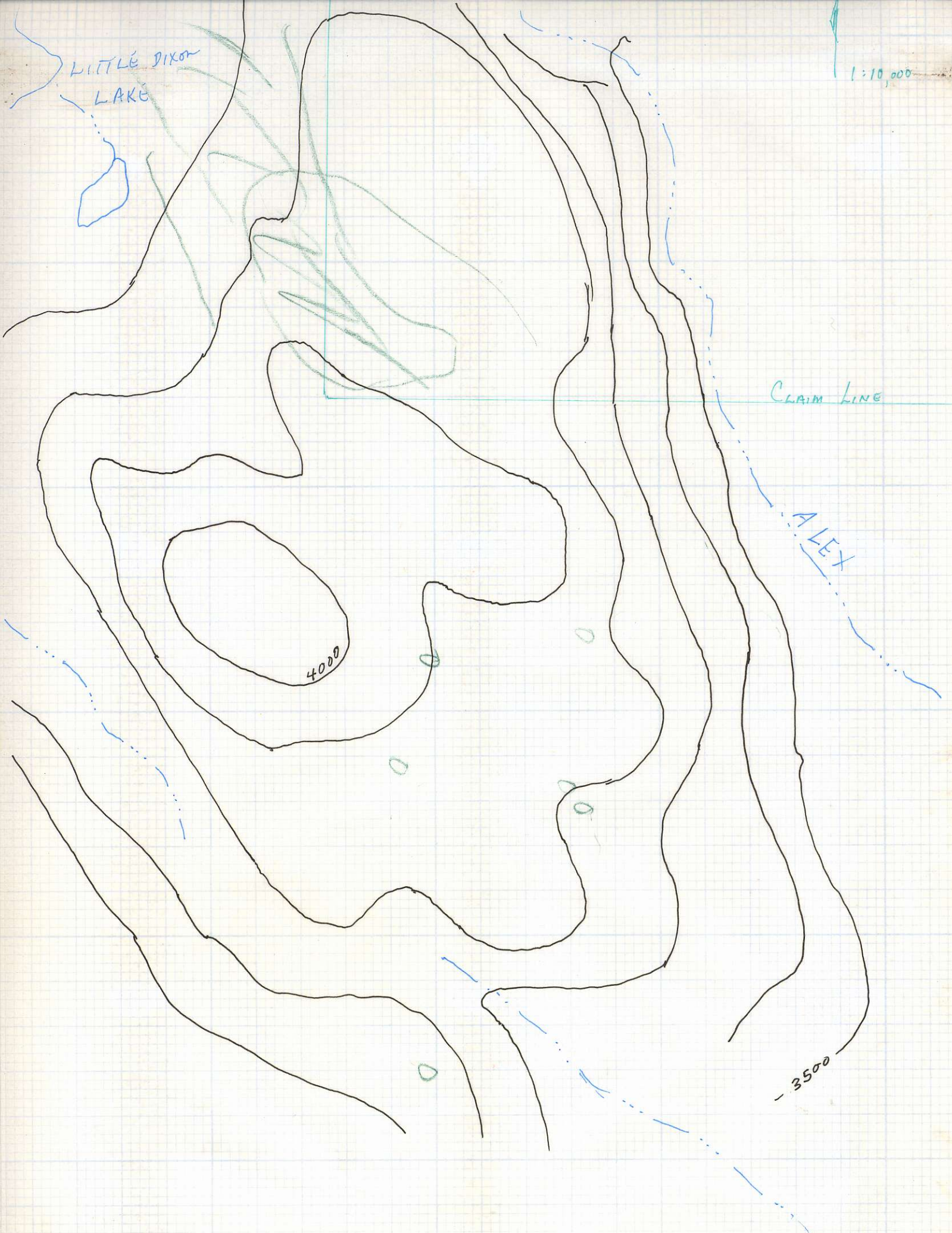
1:10,000

CLAIM LINE

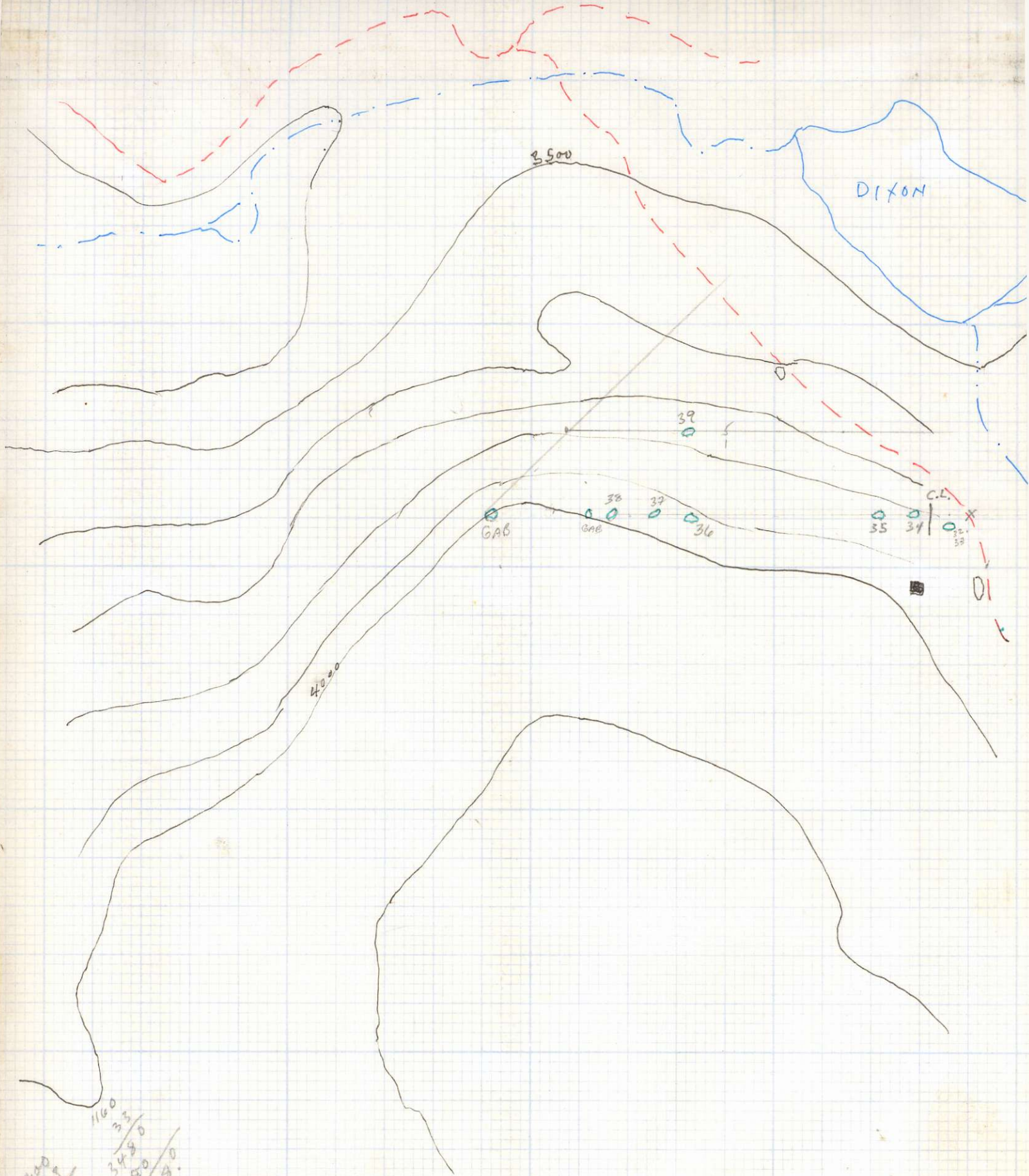
ALEX

4000

3500







1200  
 55  
 3600  
 3600  
 8760

1160  
 33  
 3480  
 3480  
 38280

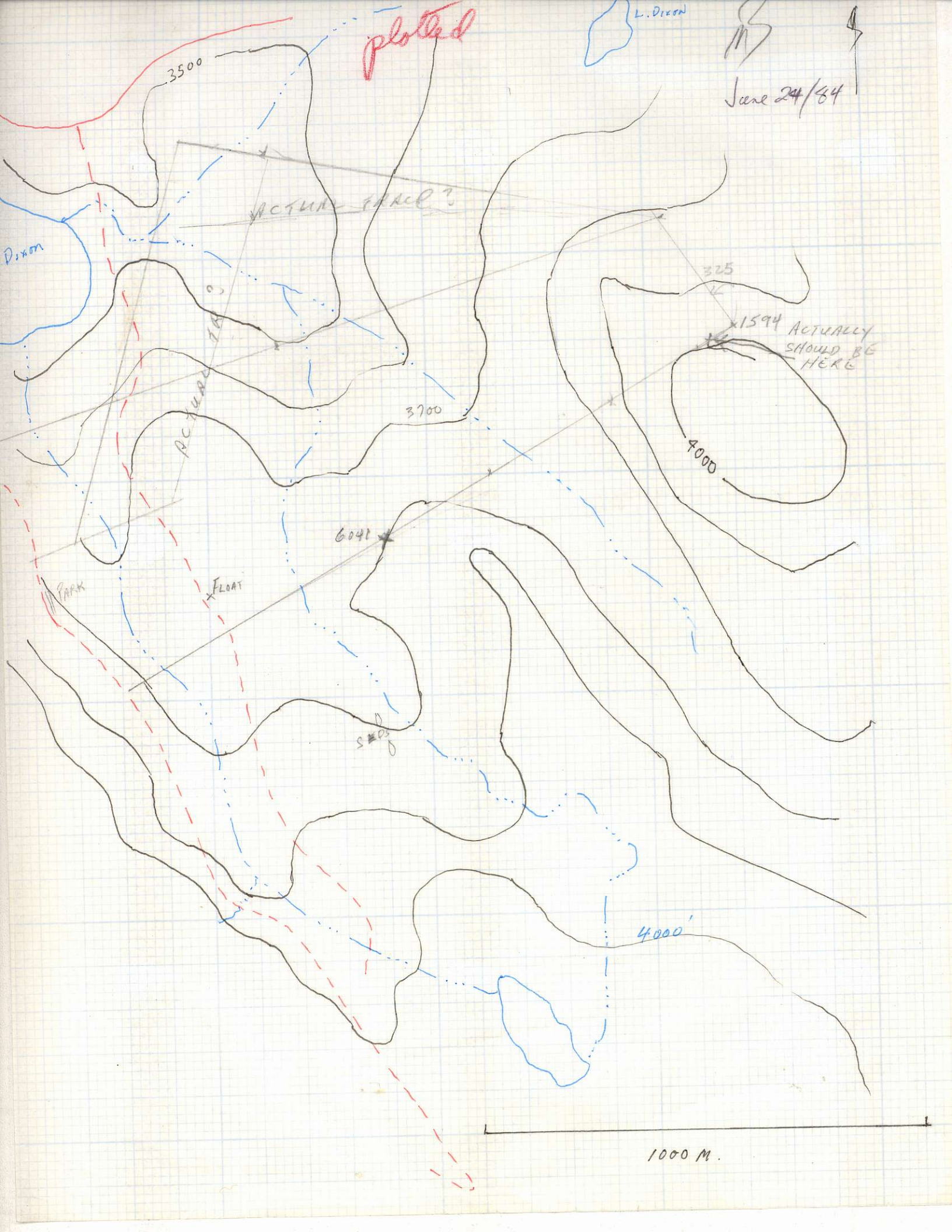


plotted

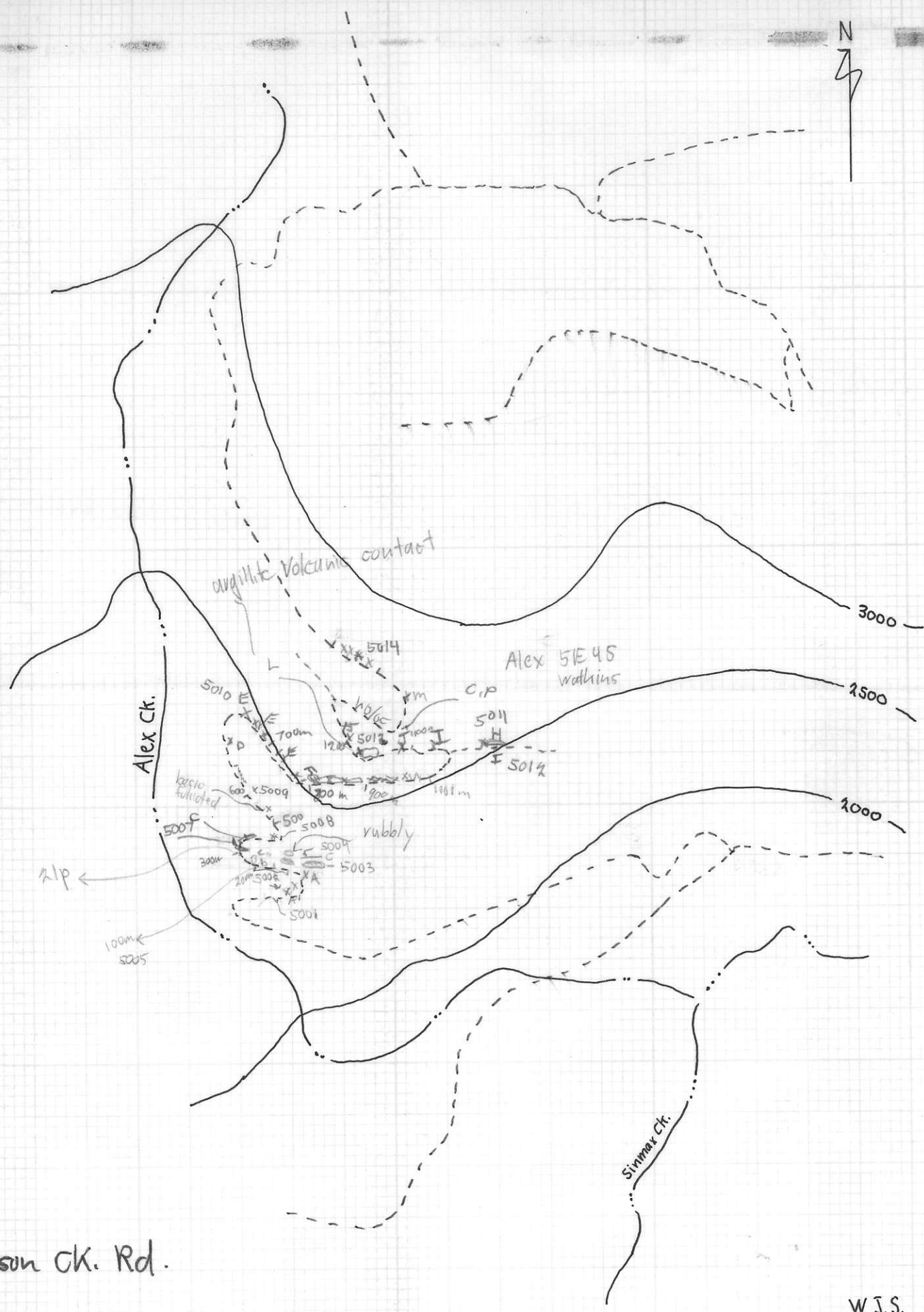
L. Dixon

MS

June 24/84







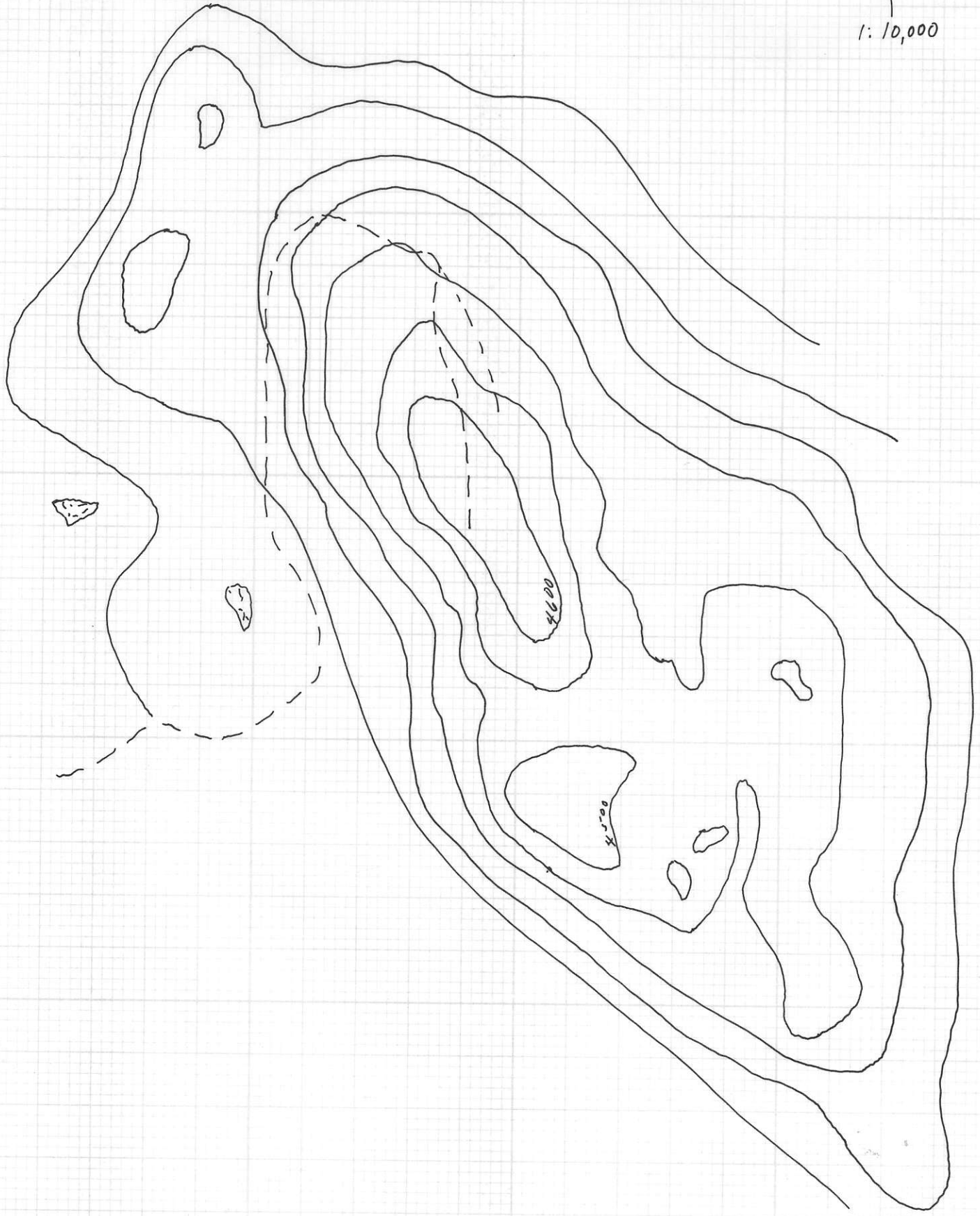
Johnson Ck. Rd.

W.J.S.  
1:10,000  
June 12/84

1/2000 - 1.6

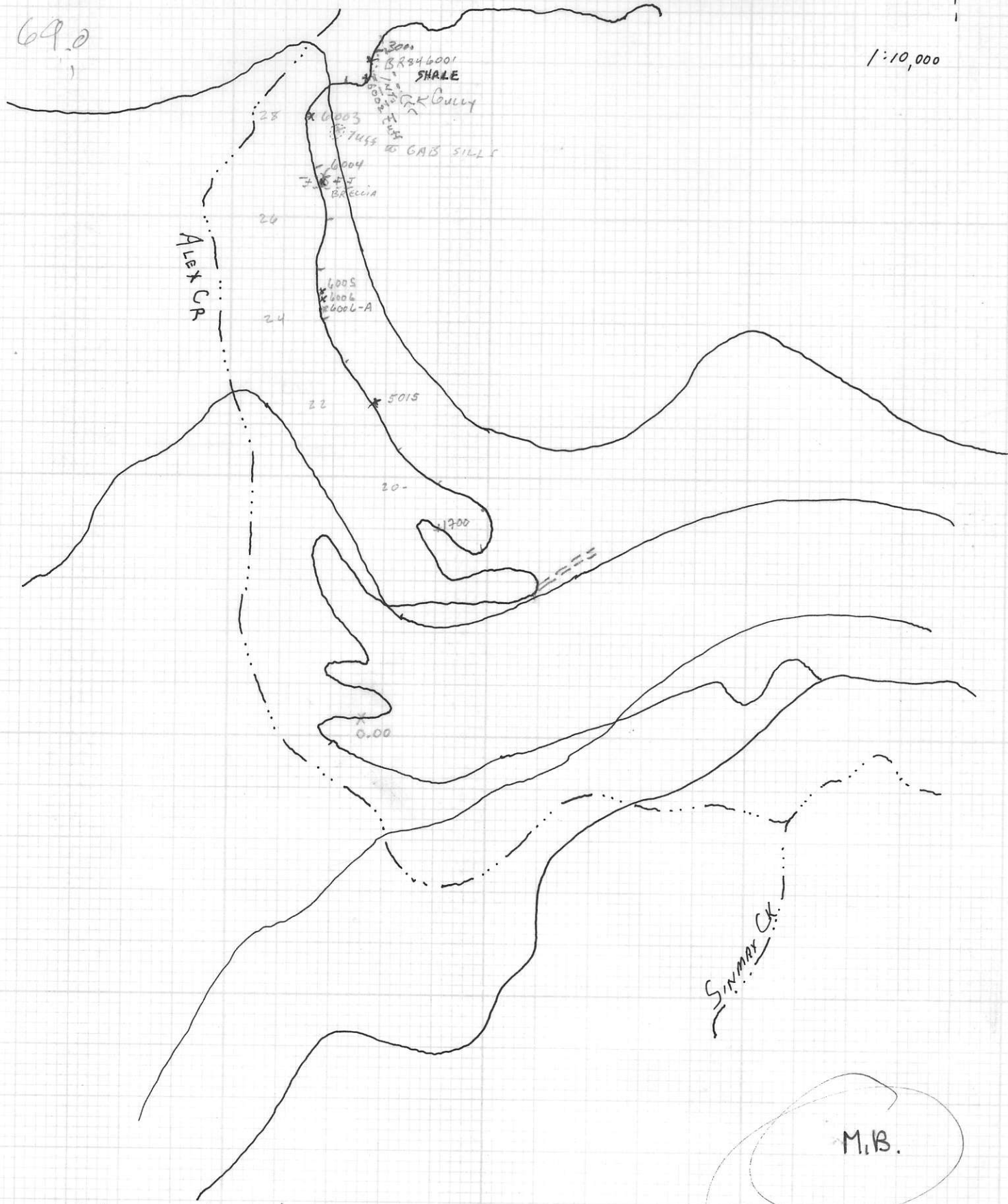


1:10,000



69.0  
1

1:10,000



Johnson Ch. Rd. June 12/84

M.B.



1:10,000

L. Dixon  
LAKE

3500

DIXON  
LAKE

ACTUAL  
TRAVERSE

260m  
S-1

5504  
5040

1130
333
3390
3390
3229.0

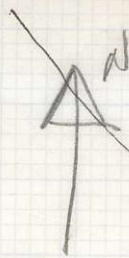
0 100 200 300

3600
.31
108000
111800

45



BA12  
4W, 2S  
+32.5 m  
1.4m from top of



90.4

89.1

1.3

tree

4500

9  
←  
N 88  
1.3 km

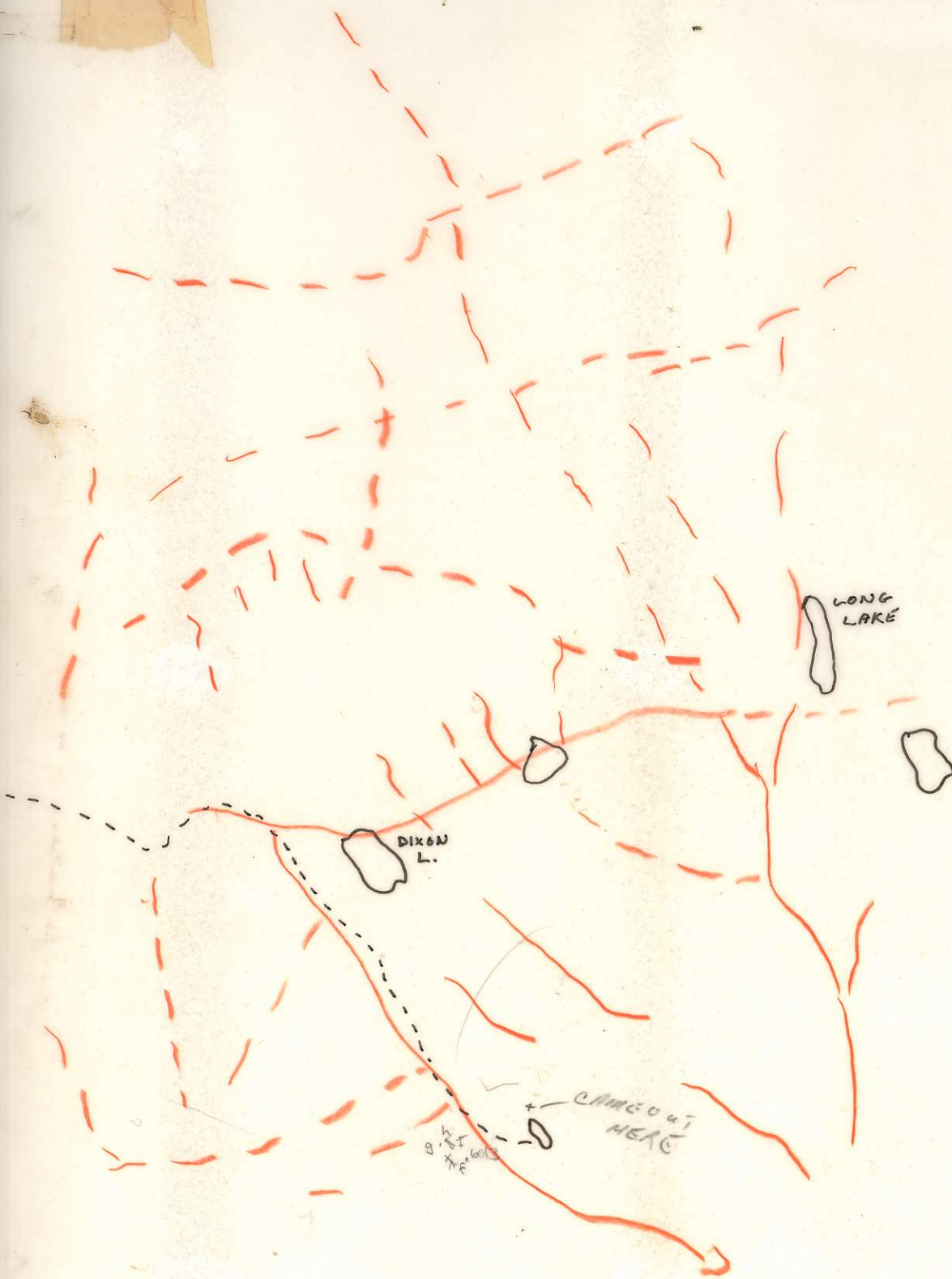
0007

0018

91.7

77 (now)  
100m  
STARTED BY  
WATER @ 96.0  
ROAD LOOKS  
GOOD

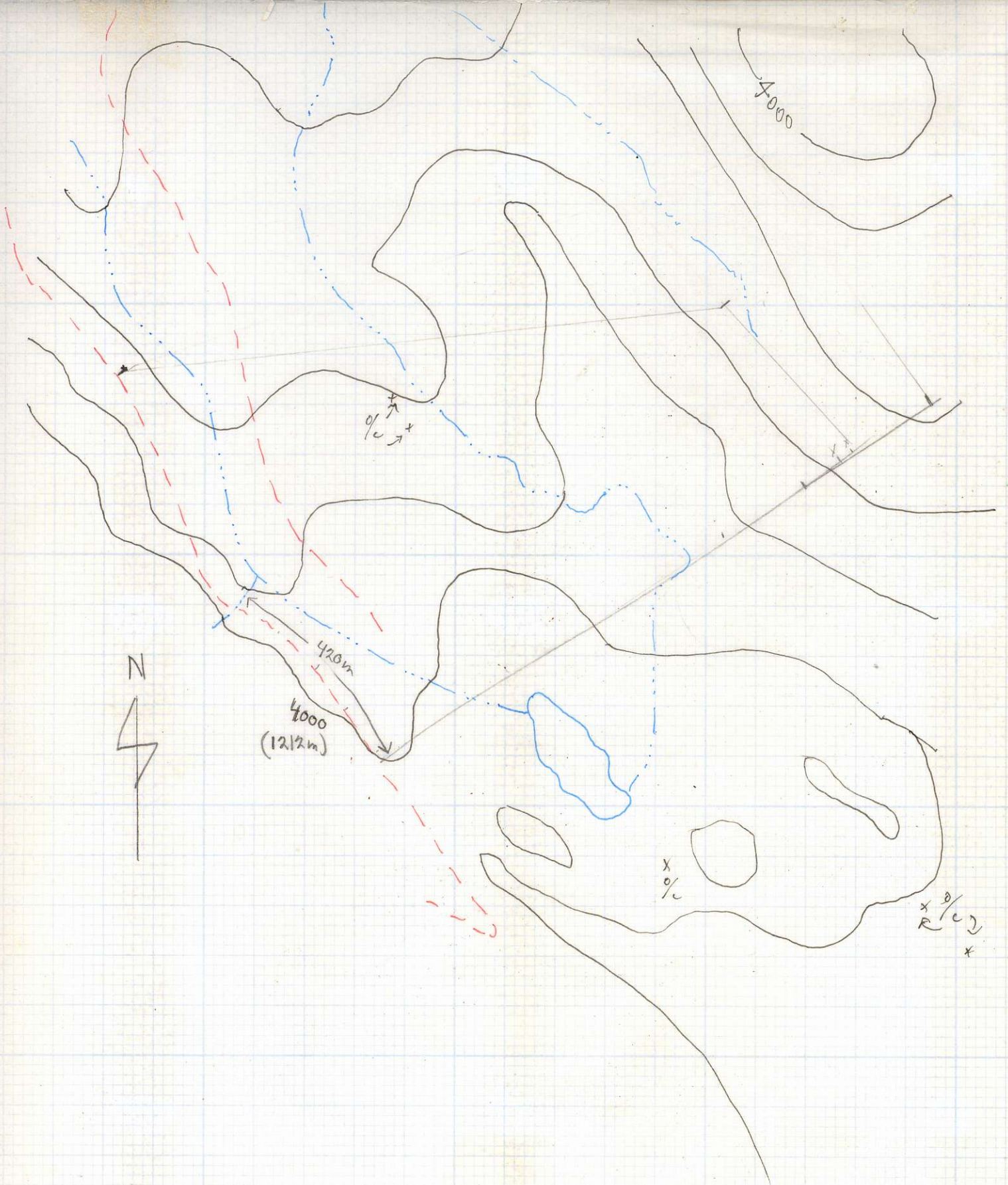




NEED MORE  
LAKES



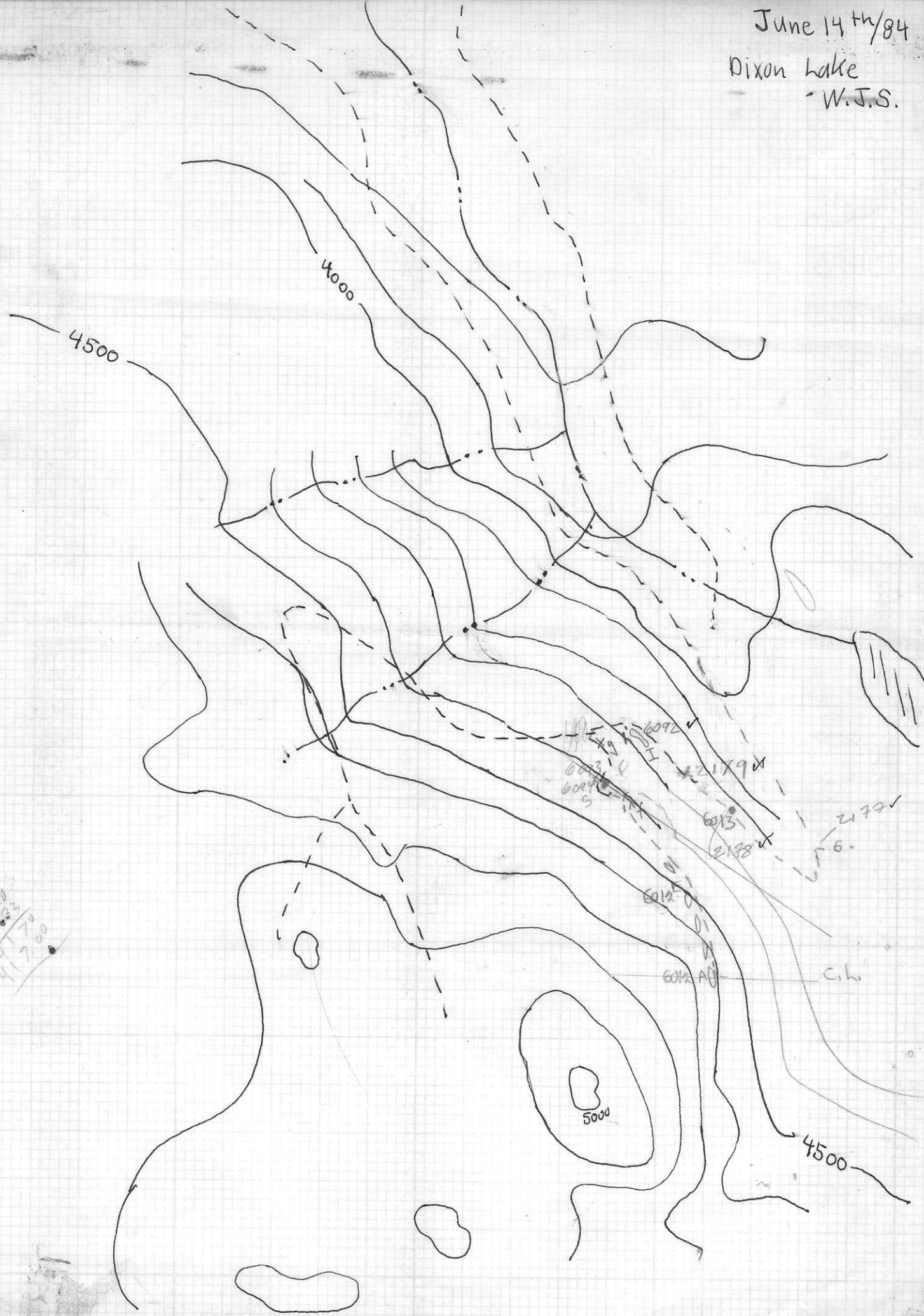




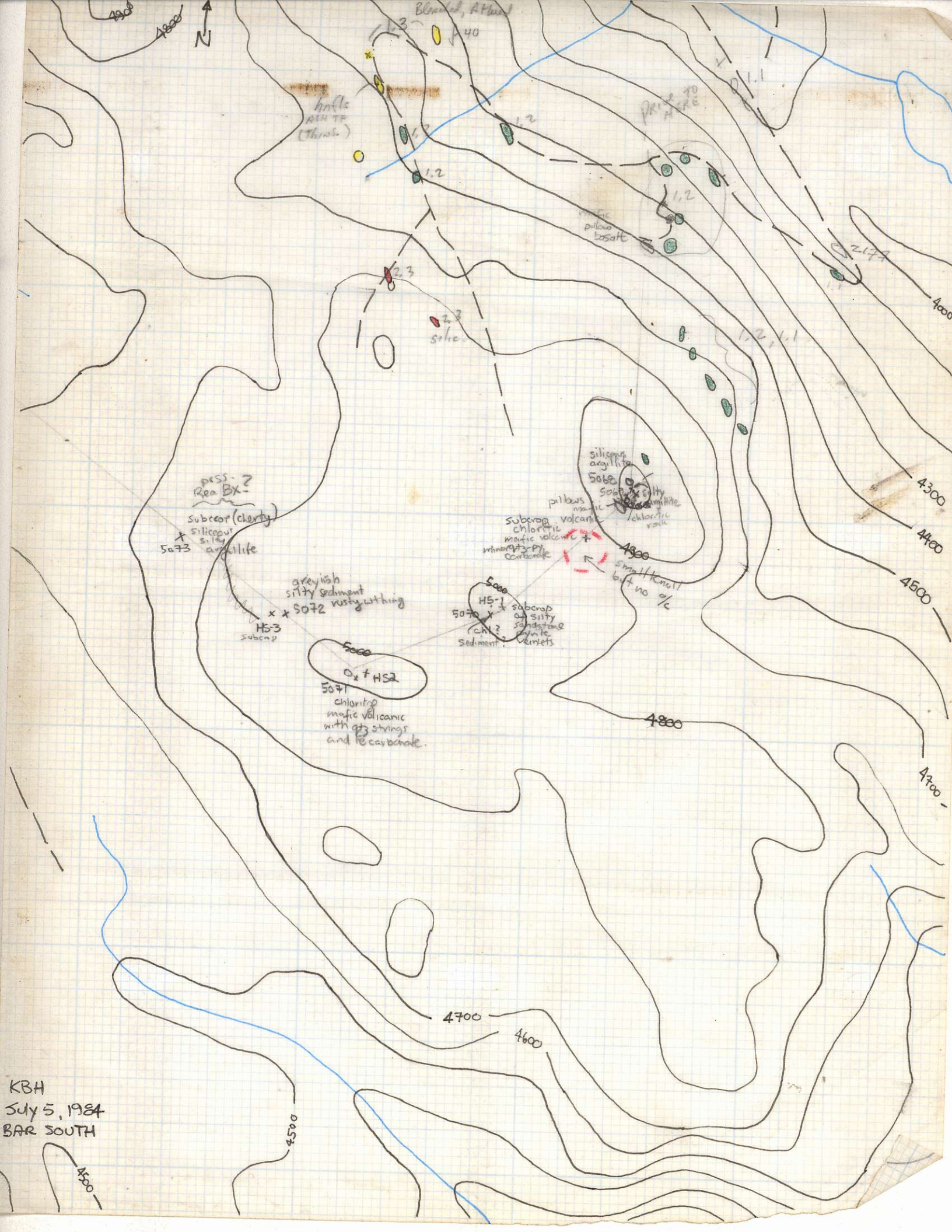
June 24/84



June 14<sup>th</sup>/84  
Dixon Lake  
- W.J.S.







KBH  
 July 5, 1984  
 BAR SOUTH



0.13

0.13

0.13

0.13

0.13

0.13

0.11

blb. drg. floor

0300m

partially altered

d/c 1.3

partially altered

s/c

altered matic

-PY (minor)

2143

partially altered matic

rows of amygd

BAR 4

2143

4W 35

BAR 13

S109

FLOOR

closed to d/c

altered matic

TE-SER

-PY (minor)

bid. S107A

altered matic

-Fe-E

NA-0

OGRETIW

ALTERED/BLEACHED

MSV JULY 23/84

? horafis ash hill

0.13

0.13

0.13

0.12

0.13

0.13

0.13

0.13

0.13

0.13

0.13

0.13

0.13

0.13

0.13

0.13

0.13

0.13

0.13

0.13

0.13

0.13

0.13

0.13

0.13

0.13

0.13

0.13

0.13

0.13

0.13

0.13



N  
Z

MSV  
JL 24/84

MIKE B

4000

4500

MSV JL 23

RCS 2146  
 13/1.9  
 note 0/6  
 40w  
 clear  
 mist  
 60 @ 180°  
 13/1.4  
 (same as  
 above)

MSV JL 24

1040 at 270°

1300 at 102°

C.L.

LENDY

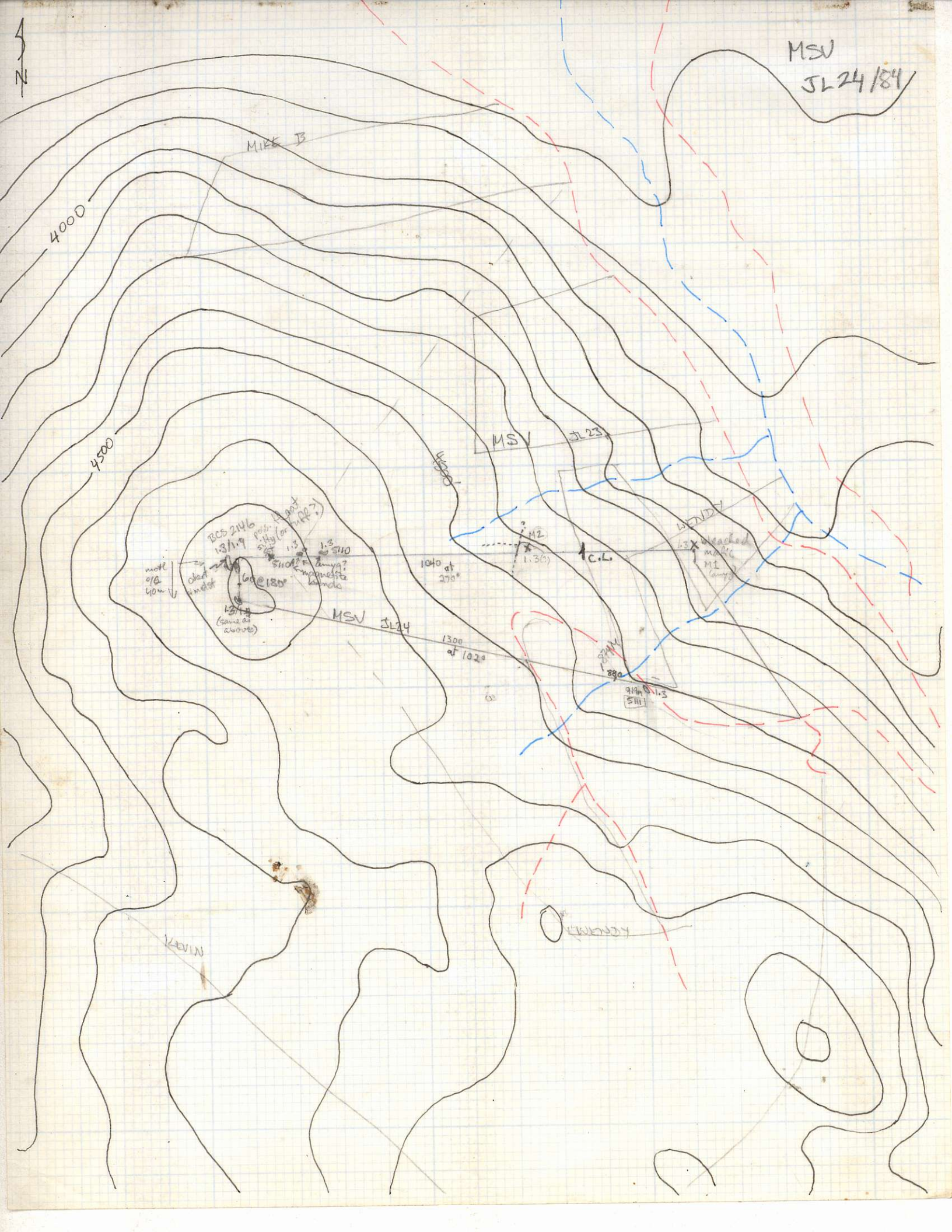
13x reached  
M1

880

914 @ 1.3  
511

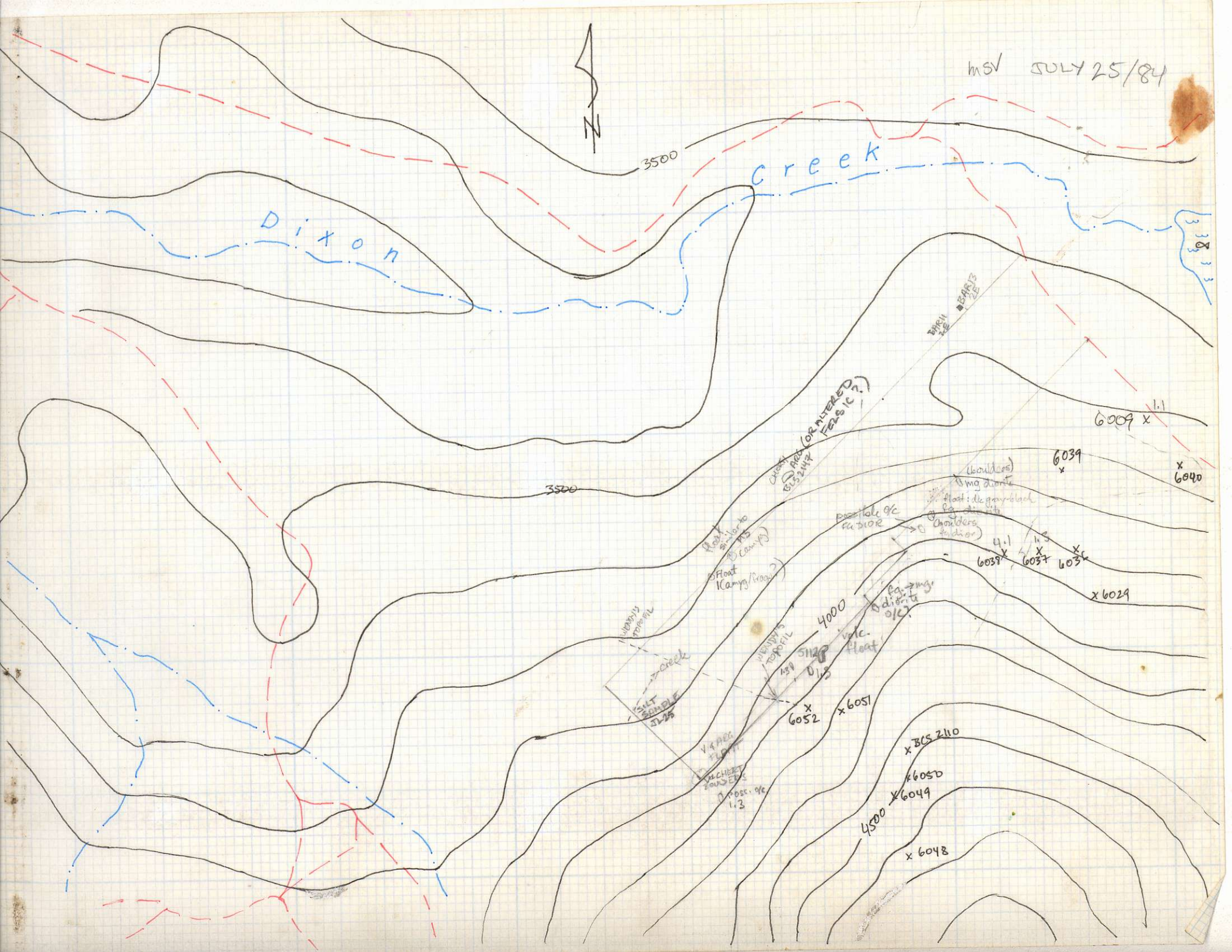
KEVIN

LENDY





MSV JULY 25/84



3500

creek

Dixon

3500

Chert (or altered feldic)

Bear's E

6009 x

6039 x

x 6040

Possible of ca. 2000

Boulders (mg diorite)  
float: de gneiss  
chonders

6051 x

6052 x

6053 x

x 6029

4000

4500

SILT SAMPLE 7/25

x 6052

x 6051

x 305 210

x 6050

x 6049

4500

x 6048

VIA REC. FLOTT  
CACHET  
7005 E  
Poss. of  
1:3