

SC Claims

July 24, 1984

824200 K. Heather
T. M^cCræ

Sunny and hot! Traverse on
Northeastern corner of SC claims.

H.S.-19 (H.S.)

Small subcrop of diorite (?).

Fine grained, intrusive texture.

Can see small hornblende

(1-2mm) phenocrysts.

Aug 28/84: Fine grained (fgr.) diorite.

BCS-2156 (3 H.S., WR).

Very siliceous lapilli tuff. Rhyolitic
composition with frags (rounded and
angular) orientated // to flow
banding (only locally observed).

Photos

(10) Mt. Dunn w/ cut across foreground.

(11) Rhyolite flow breccia at BCS-2156

Aug 28/84: Pass a cherty breccia or
conglomerate. Matrix is very
cherty. Geochem will tell story.

One hematite rich (jaaper) frag. was also seen in this rock. This % resembles that observed on the SC-1 claim. (which also contained hematite rich frags.)

(flow contact)

✓ 177°/85°E

locally 1-2% diss pyrite.

Also see small irregular dikes of diorite cutting the %'s in places

Aug 28/84: 7079A is a good blue-grey chert.

However 7079 is a light white colour and contains small (1-2mm) rounded spherulites(?). (TBC).

SC84-7079 (2 H.S., Litho)

↖ 7079 = 7079A

Rhyolite fragmented similar to 3CS-2156. However % is slightly more hematitic.

✓

⑫ Mt. Dunn. Photo

H.S.-20 (1 H.S.)

Sediments interbedded
silty argillite (not black) and
sandstones (slightly siliceous).
(with rusty).

✓ 162/60 SW (Z also)

⊗ Photo taken of above.

✓ 358/06 SW

look similar to sed's seen
just south of this % in another
cut area.

Different % than above

Foliation is curved locally
(due to folding (?)).

✓ 342/65 SW

Aug 28/84: minor diss. pyrite (4.1%).

H.S.-21 (1 H.S.)

Medium grained graywacke.

Dirty looking w/ abundant lithic
grains. No bedding or foliation
were observed.

Aug. 28/84: Looks more like a diorite (4.1).

SC84-7080 (none, litho)

Small % of siliceous argillite
slightly pyrite and rusty withing.

7 154 / 61 SW

July 25, 1984

K. Heather
K. Meagher

Sunny (going to be hot). Traverse from same starting spot as July 23 across to knob just north of rhyolite bx locality.

BCS-2157 (3 H.S., WR + Geochem).

Small % (or subcrop) of very pyritic (up to 10%) cherty breccia (poss. rhyolite) and another rock type which had small white feldspar phenocrysts (QFP). Also some quartz eyes. All are very pyritic. No contact relationships could be seen.

Numerous small subcrops and float pieces near by one of the same cherty (rhyolitic) rock. See 2 pieces of float (H.S.-2

H.S.-22A, 22B Rhyolite flow breccia?

Aug. 28/84: white phen's are calcite.

BCS-2158 (1 H.S., WR)

Large % in headwaters of major creek I-trib. of Sprague)

Appears to be mafic volcanic. Minor diss. pyrite (1%) locally. Locally the rock has an igneous looking texture (fine grained diorite?)

Minor calcite veining

Aug 28/84: Poss. diorite(?)

Going w/ diorite interpretation.

SC84-6099 (1 H.S., Litho)

Aug 26/84: ✓

✓ 325 / 60° NE (↗)

Interbedded cherts (grey and greenish-white) w/ siliceous sediment. Some bedds are more foliated than others.

SC84-6100 QFP check sample

SC84-6101 (1 H.S., Litho)

Some of the chert horizons are green in colour. Sample taken to

Aug. 28/84: ✓

try to see the difference.

Foliation in argillite beyond
the chert rhyolite is

∠ 133 / 75 NE

SC84-6102 (1 H.S., Litho)

Small % of qtz-eye bearing
rhyolite(?). Has greenish white
colour similar to that interbedded
w/ the grey chert. Has 2% diss.
pyrite as 1-2mm cubes. ✓

Aug 28/84: QFP Flow(?) feldspars are altered to clay(?). Matrix
of rock has green tinge due to sericite(?). Pyritic and has
Fe-carb veins cutting across it.

∠ 115 / 65 NE

H.S.-23 (1 H.S.)

Sandstone (?) greenish-grey
in colour. ✓

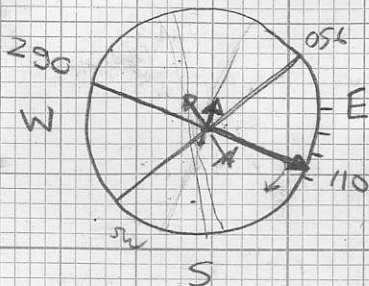
Aug 28/84: Grey matrix variety
of QFP.

SC84-6103 (2 H.S., Litho)

Large % of QFP (feldspar
more abundant than qtz eye
Also fine grained rx just before it (H.S.-24)

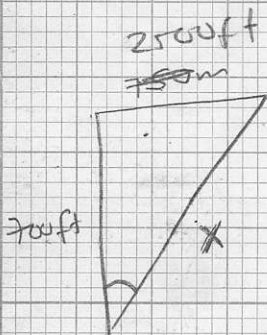
290 / 48 NE

N 110 / 48 NE



Right Hand Rule

250
21. 2250 2FC
250
290 / 4N



Bcs-2159 (I.H.S., WR)

QFP w/ dark grey to black matrix. Small ~~triar~~ feldspar phenocrysts can be seen. Also can see quartz eyes.

Aug. 28/84: euhedral black crystals with good cleavage (appears to be striated as well). Black feldspar(?) (probably something exotic.).

July 26, 1984

Raining and thunder and lightning. Office Day!

July 27, 1984

Day off! Bullets!

July 28, 1984

K. Heather

M. V

K. Meagher.

Traverse to QFP w/ pyrite-qtz stockwork. Karen falls on cliff. Take to Kamboos to get X-ray (Broken shoulder!).

July 29, 1984

K. Heather
M. Corrigan

Sunny and hot!

Traverse west of Pyritic QFP on SC-Anna claim. Purpose is to evaluate the DISTEM anomaly west of the QFP. Marcella is doing like wise on the DISTEM anomaly east of the QFP.

Zigzag bearings

180m at 250° ✓

300m at 100° ✓

300m at 250°

250m at 100°

270m at 260°

280m at 100°

240m at 260°

325m at 100°

SC84-5116 (1 H.S., Litho)

Small % in overgrown (heavy) clear cut
Has diorite, argillite and sst (poss
volcanic??). Litho is of the sst. as
is the H.S.

There are abundant small
lithic particles (feldspar) that are
broken?

Minor (<1%) diss. pyrite and
no obvious α/β -eyes.

Has argillite to the west of it

Σ 352 / 66 SW

Aug. 28/84: Sample is withed; but appears
to be a sst.

SC84-5117 (2 H.S., Litho)

Massive flow (rhyolite?), has (<1%)
diss. pyrite. Has a greenish-white
colour (sericite?). Outside chance
this may be a chert but it
scratches with a rock pick.

Aug 28/84: Poss. a chert or siliceous
sediment of some sort.

SC84-5118

(1H.S., Litho)

Greenish qtz-eye bearing rhyolite(?).
% w/thes blocky. Trace pyrite.
Similar to 5117 except qtz eyes
are more obvious!

Aug 28/84:

H.S-25

(1H.S.)

Bx rock. small angular to rounded
fragments in a kaolinitic groundmass (matrix).
Frag. ~~are~~ are QFP (can see qtz eyes.)

SC84-5119

(1H.S., Litho)

Qtz-eye bearing rhyolite(?)
Greenish tinge in color. Minor (trace)
pyrite diss.; small qtz eyes (<1mm). No
obvious feldspars.

This may be a siliceous sst(?).

Aug 28/84:

40m at 360° % extent

5C84-5120 (I.H.S., litho).

large % of QFP. Various degree of alteration (from grey QFP (sampled) to minor qz-py stalkwork at top and also sericite (green variety) at top. Also there are different phenocryst: groundmass ratios. Overall the alteration seems to be increasing up the hill.

Aug 28/84: 5120 looks rhyolitic (QFP) but also has a vague bx texture.

July 30, 1984

K. Heather

M. Corrigan

Sunny and fine hot. Traverse from QFP knob on SC-Anna claims, down to Sprogue Creek road.

SC84-5121 (1 H.S., Litho)

Moderate sized % w/ blocky jointing. Appears to be QFP that is altered by quartz-pyrite stringers. On average the rock contains 1-2% pyrite (diss.) but locally up to 5% (most altered). Sample 5121 is of relatively ^{fresh} QFP. (grey groundmass variety).

Aug 28/84: ✓

SC84-5122

(1 H.S., Litho).

Same % as 5121 except this sample is of the very altered rock. Appears to be silicified w/ feldspar and quartz eye phenocrysts still visible (but veined 20% diss. py (up to 5% locally). Minor qtz stockwork. Rock is a very bleached white colour.

Still a QFP.

Aug 28/84: ✓ I would like have a stain test for plagioclase & K-spar done on this sample.

#

From base of QFP cliffs to 240m at 120° bearing. Then went 150m at 280° bearing.

SC84-5123

(1 H.S., Litho)

20-30m long ϕ c of light grey colored groundmass QFP. Plag pheno's up to 0.5cm long. 1-2mm An qtz eyes. Rock appears reasonably fresh. Trace pyrite. Very rare qtz stringers. Rock is similar to grey QFP at 5120.

Aug 28/84: Rock is brecciated (as was 5120). Dark QFP frags (sub-rounded) (frequent supported) in a siliceous (quartz?) matrix.

SC84-5124

(1 H.S., Litho)

Appears to be medium grained diorite but local small pockets of breccia (hyaloclastic??) make me think twice (poss. a coarse grained pillow??). Overall the rock is a crystalline (intrusive) nature.

One H.S. { (a) massive igneous rock
with fresh { (b) brecciated rx.

Feature

Aug 28/84: However looks like diorite.

W

small % of argillite w/ minor
argillaceous siltstone. Located 126m
along 90° bearing from major stream.

Z 335 / 85 SW

H.S.-26

#

Small subcrop of argillaceous
material containing large (0.5 cm dia.)
plagioclase x-tals (round).
Altered to iron-carbonate?
then to limonite? Also
some argillite nearby in
subcrop.

The circles may have pyrite?

There are also small argillite
fragments indicating its sedimentary

Too weathered for a sample.

July 31, 1984K. Heather
T. McCrae

Sunny and hot! Traverse to evaluate diagen anomalies located between the SC2-3 and SC-1 claims. (ie, not our ground.).

424m

H.S-27 (H.S.)

small % of what looks like f.gr. diorite but poss^{mafic} volcanic. No pillows were seen.

✓

SC84-7085 (1 H.S., Litho)

Interbedded cherts(?) and siliceous sediments. Chert is white in colour
 ✓ ≠ 330/AA SW

but locally has black patches (poss. fags) but difficult to tell.

H.S.-28

(H.S.)

✓ Predominately rusty black
argillite. Rock is really broken
up. No consistent foliation
(sheared?).

H.S.-29

(H.S.)

Qtz rich sst. containing small
frags (spots) 1mm dia.?

SC84-7086

(H.S., litho)

f-gr. diorite (?) small % not
much to see in terms of internal
structures.

Similar green colour and
texture as % at bottom of this
creek that has waterfalls
(BCS-2150)?

H.S.-30 (H.S.)

Small % of silty argillite containing limonite after pyrite (2-3%).

✓ (✓) 338/81 SW

There is very good bedding in this siltstone as fine

SC84-7087 (4 H.S.)

QFP (dark grey groundmass). (7087)
w/ local qtz veining (7087A) and
some places the ~~to~~ feldspars
are black (7087B), also some
of the lodes like ~~to~~ Sam
pyroclastic (ie black argillite
in with the QFP? material.

SC84-7088 dark QFP

Aug. 28/84: These all look similar to what
was observed at the pyrite-qtz stackwork
QFP (samples BC5-2155 etc).

"Johnson Pyroclastic" texture.

Show Ian the following

SC84 - 5105

H.S - 8A

6070

6071

6072A

6072B

BCS - 2097

6074

5092

5094

5096

BCS - 2100

BCS - 2191

H.S - 17

look at :

6074

6073

6072

6071

6070

5092

+
now
#Whole-rocks lost in BCS-beak

2151

2152

2153

2154

2155

2156

2157

2158

2159