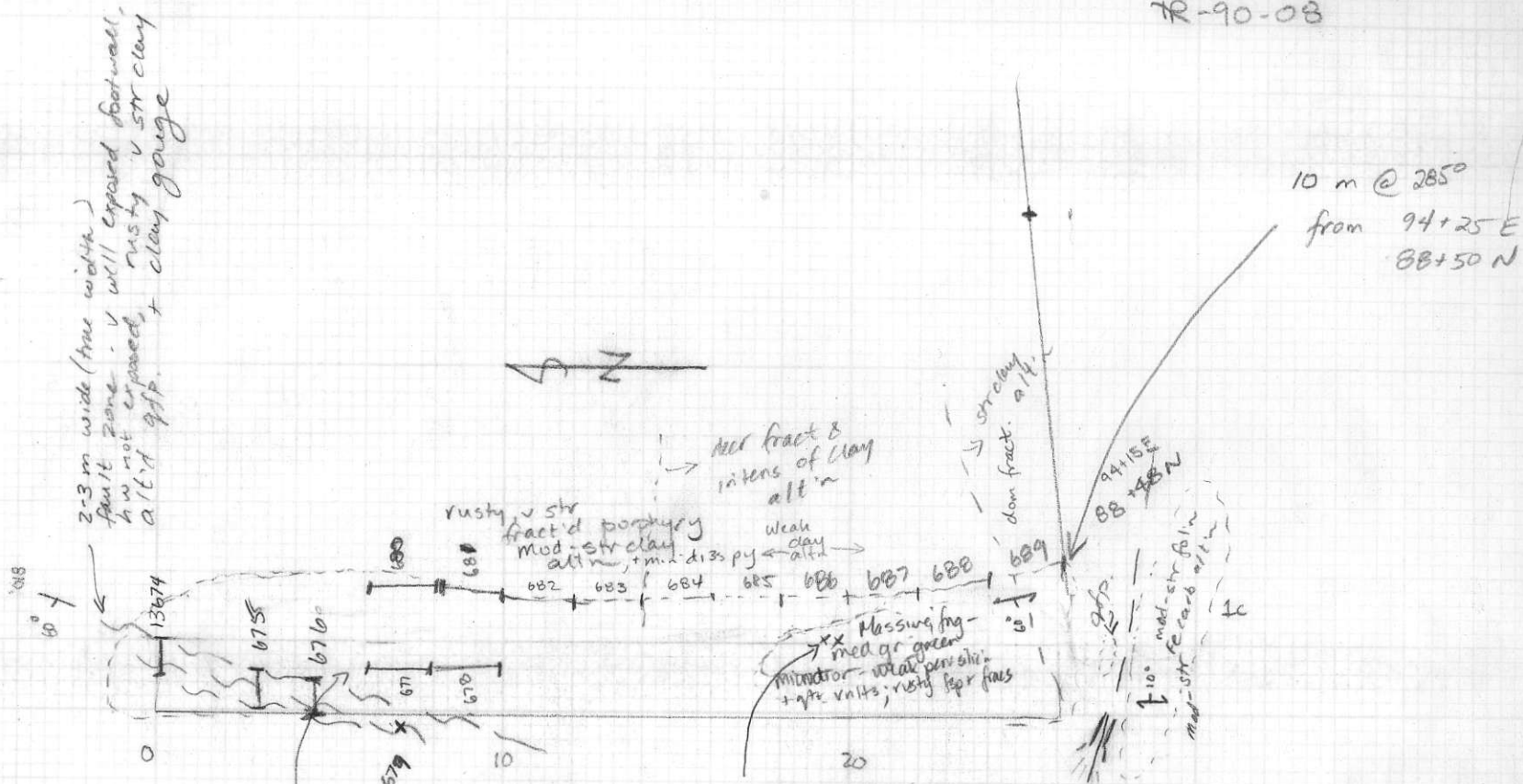


TR-90-08



green fine-med gr dior (qfp)
weath perv silty'n, min py

Massive pale grey-green
silty'd qfp in 5%
py, 1 x 4 m? irreg
zone exposed in floor of
trench - not good exposure
but prob grades out into
weath alt'n - ~~mass~~
occas bx clast, white chalc/qtz (flooded purple)
min marip, locally black sulf rich bx matrix
2 grabs from this area

BCS 13690
691

1990
824173
Rainbow