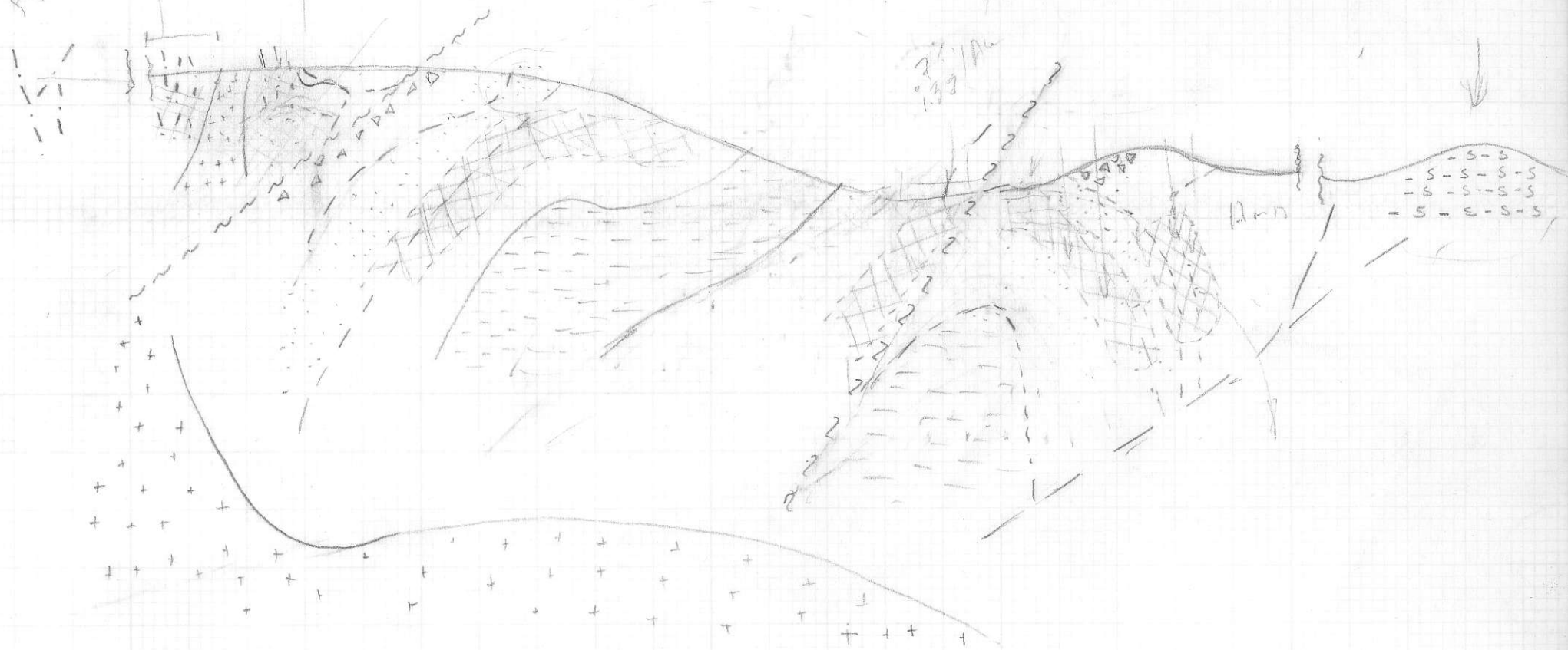


12/16/91  
4 grade structures  
West Valley  
12/15/91



Tam Drilling  
1991 824145

Ag Pb  
Zn  
Vens

An  
CPVn

An  
CPVn

specular  
hematite

diss  
mineralization

intense  
Argillite  
stockworks

ore  
zone

gypsum  
anhydrite

gypsum  
anhydrite

phyllite  
advanced  
to  
intense  
argillite

diss  
ore

Replacement  
ore  
zone

Pyrite  
shell

Skarn

Pyrite  
shell

ch  
Mt  
K silicate

spec  
hem

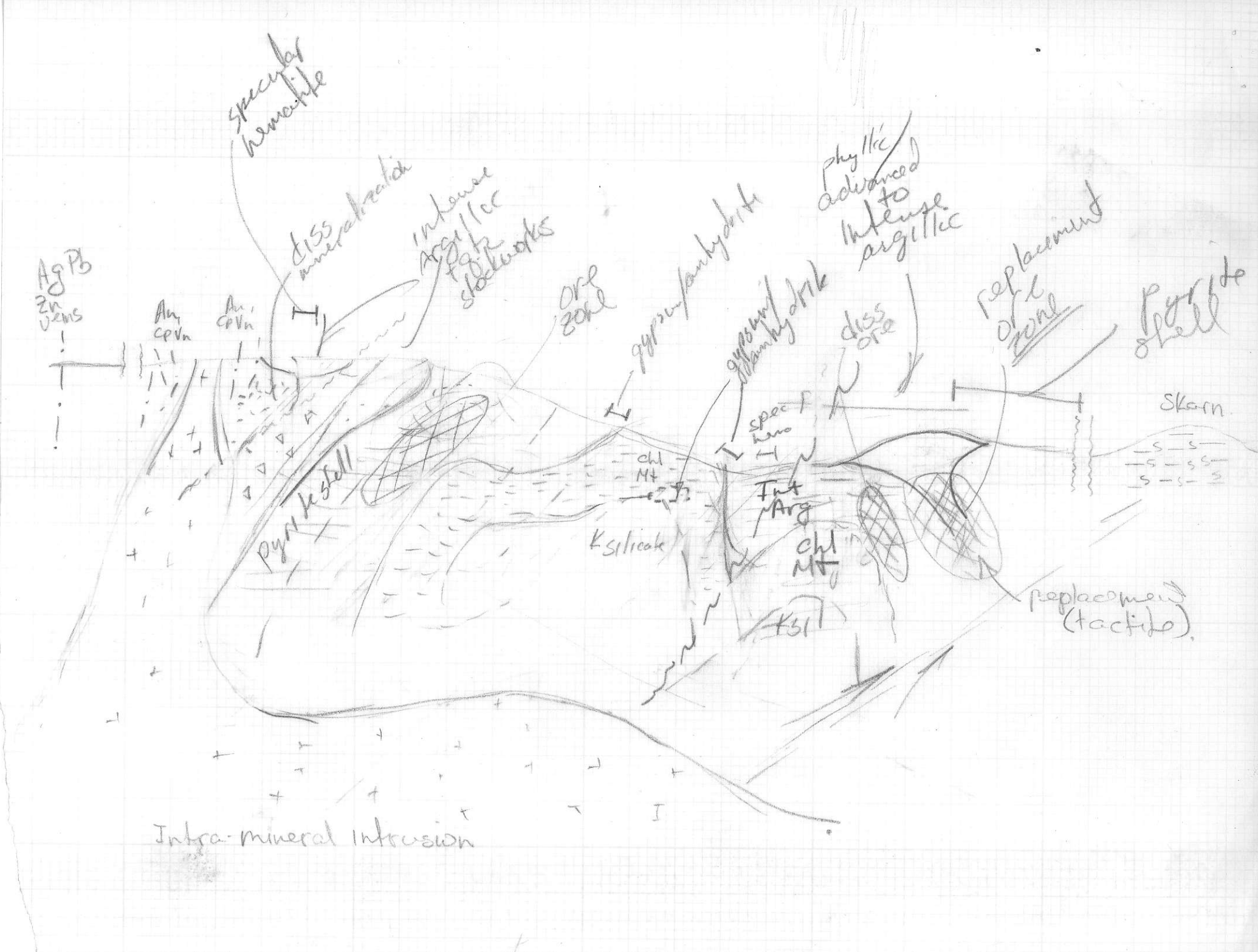
Int  
Arg

ch  
Mt

K sil

Replacement  
(tactite)

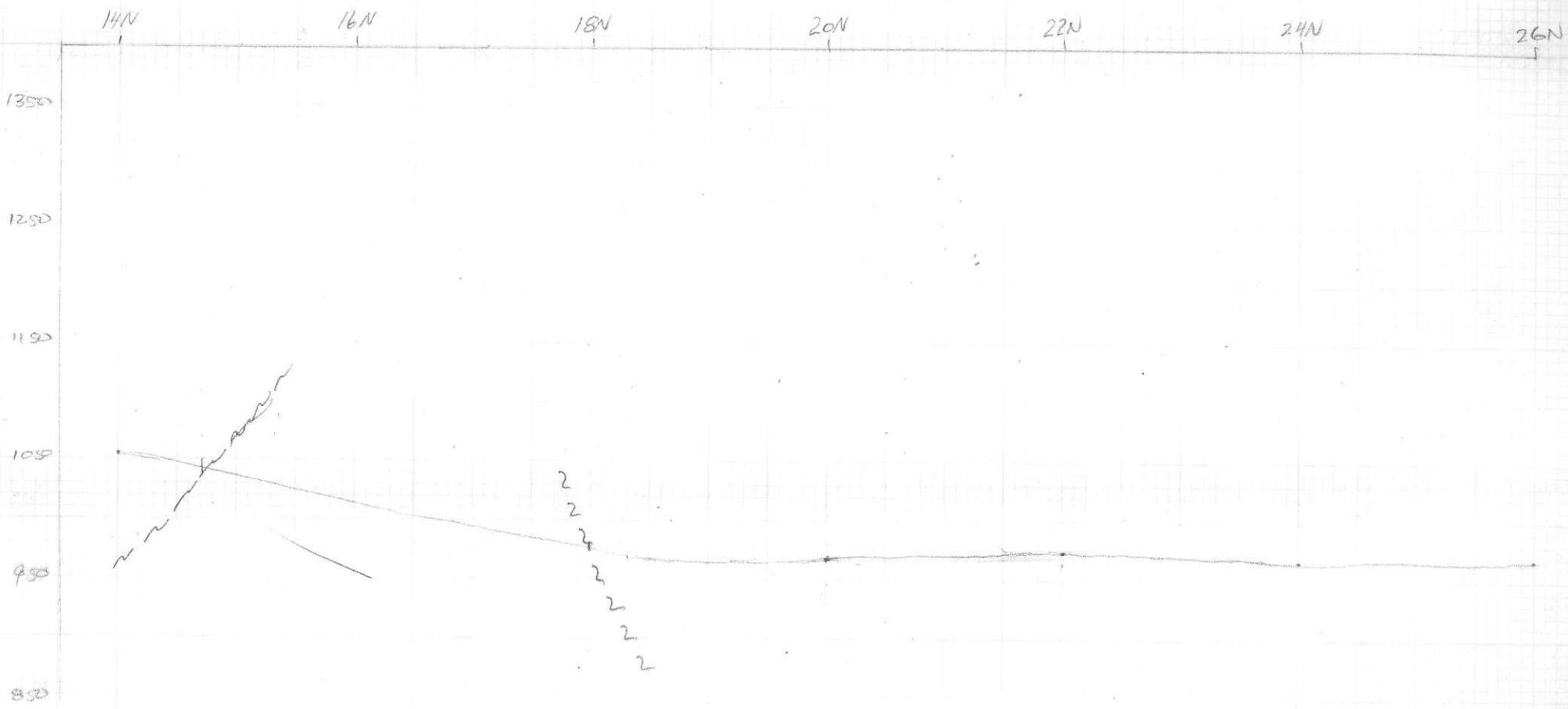
Intra-mineral intrusion



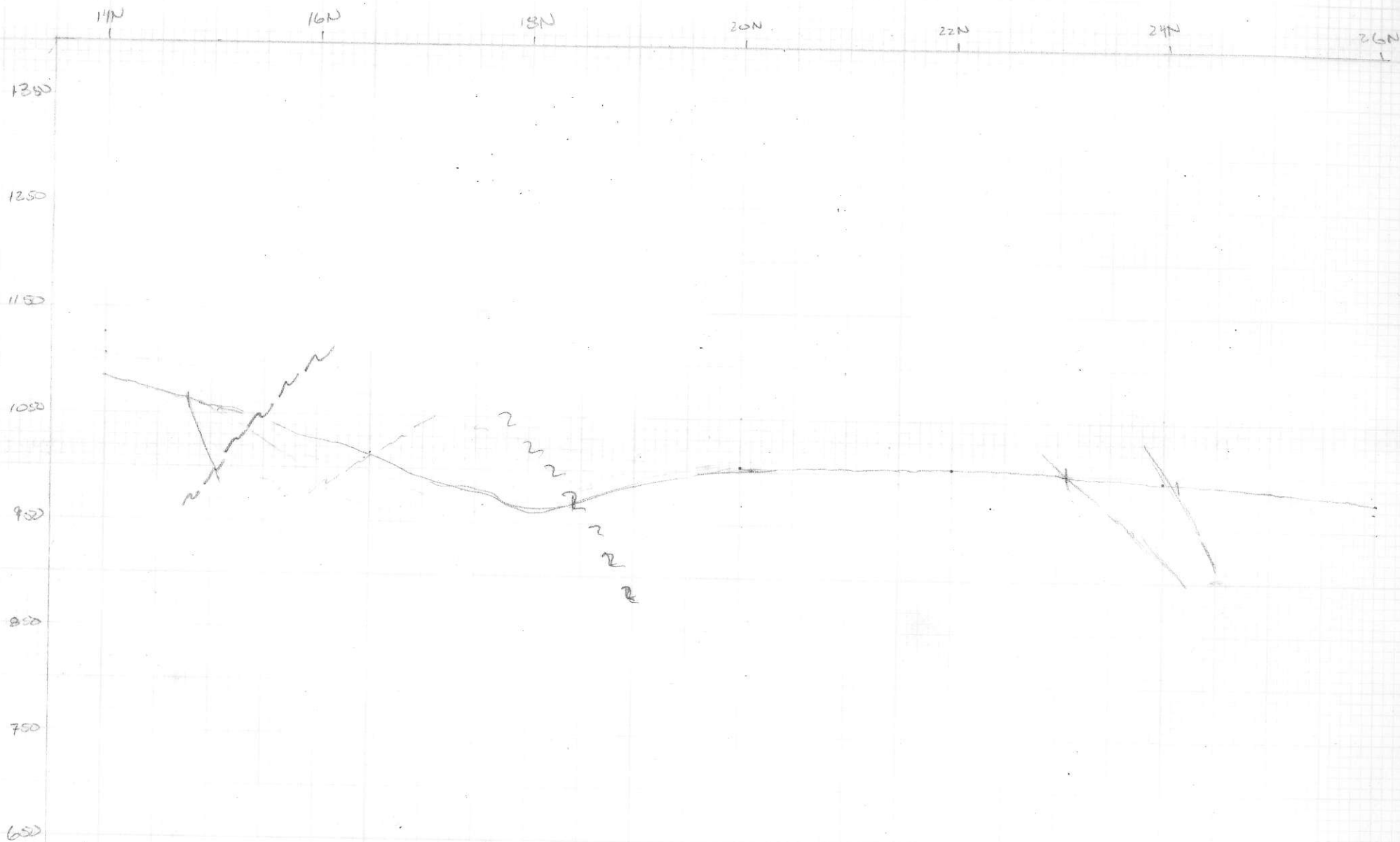
Magma type low k. calc alk dior/oltdior.



Section 15700E



Section 13+00E



Section 17+00E

14N

16N

18N

20N

22N

24N

26N

1350

1250

1150

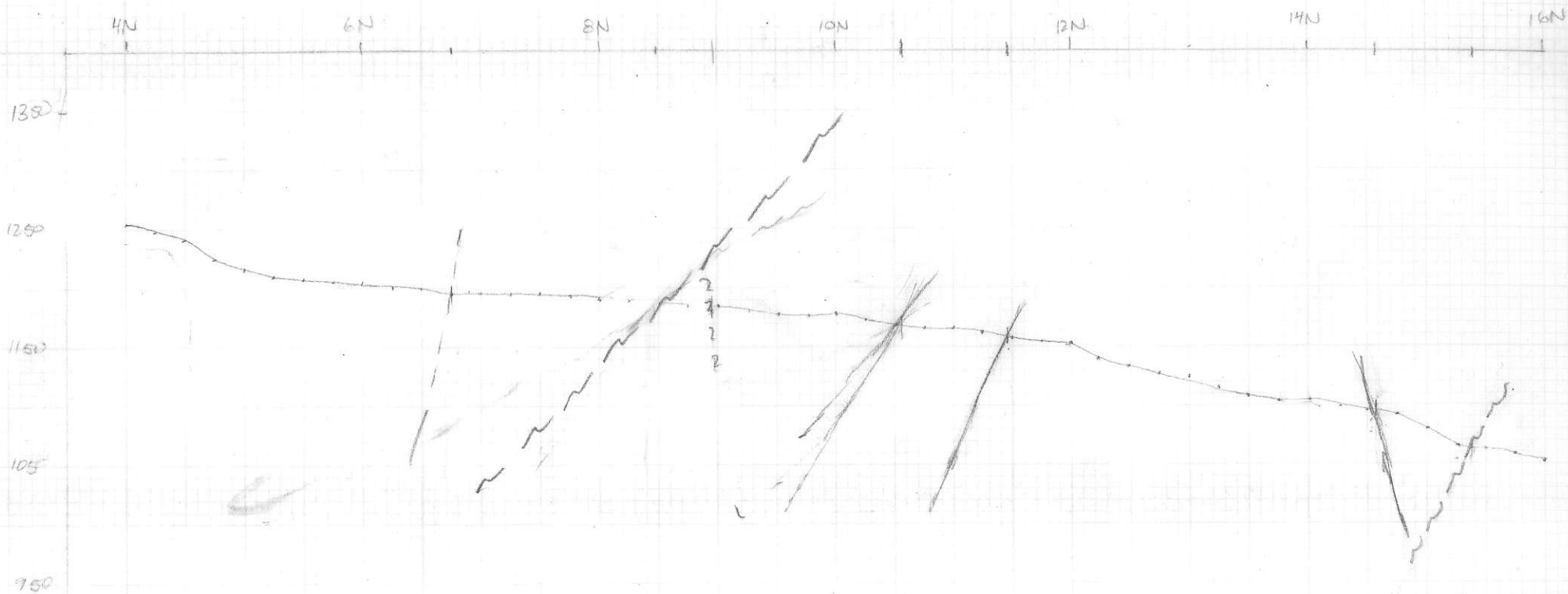
1050

950

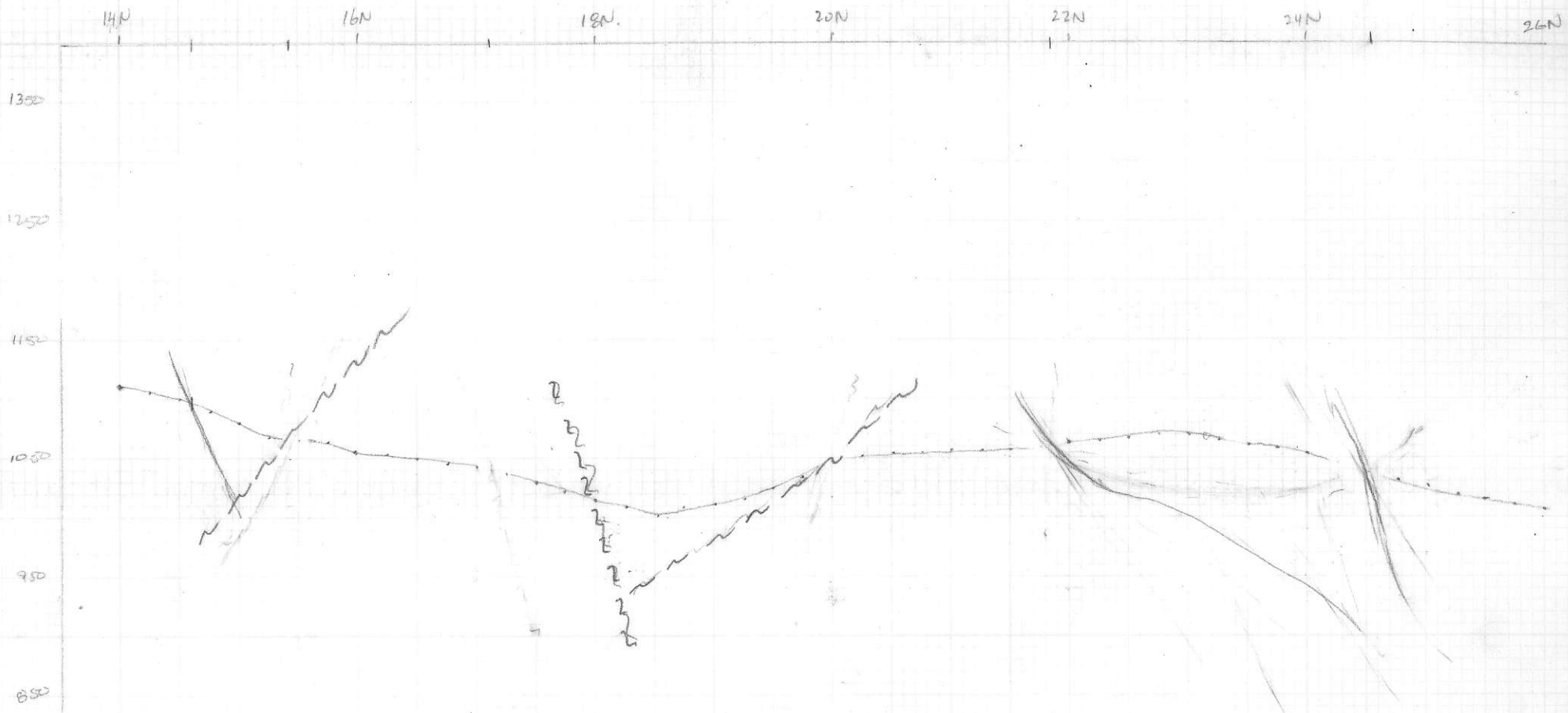
850

750

Section 11+50E

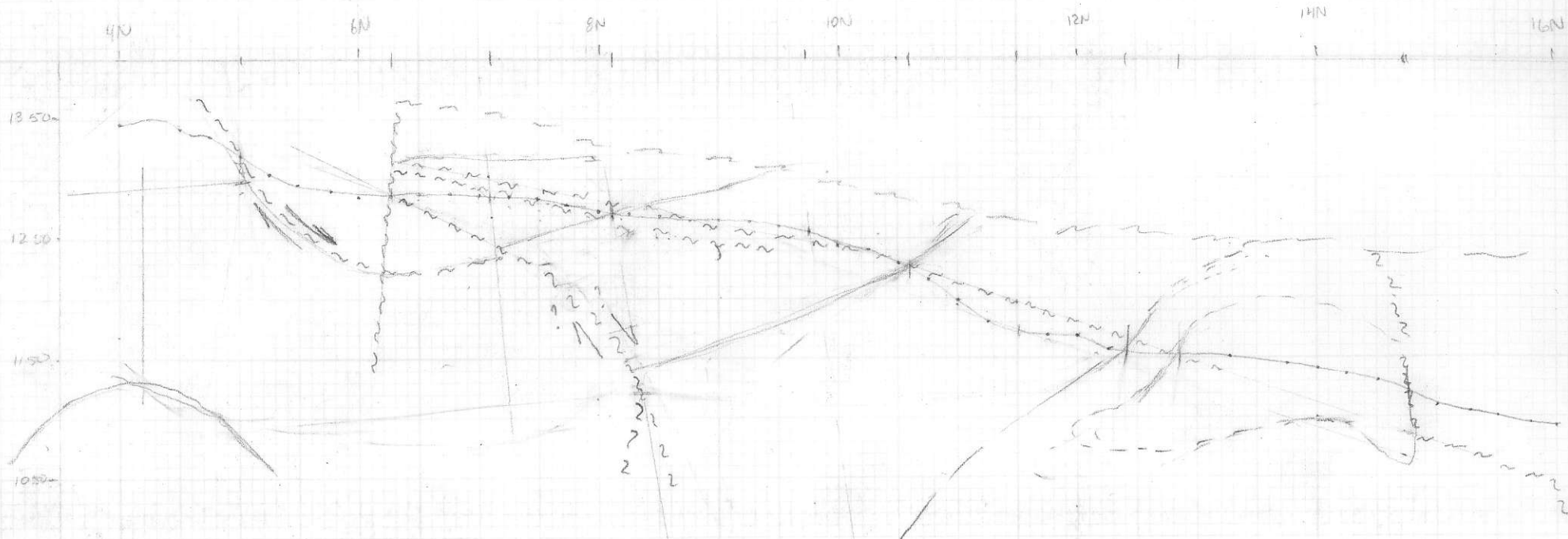


Section 11700E

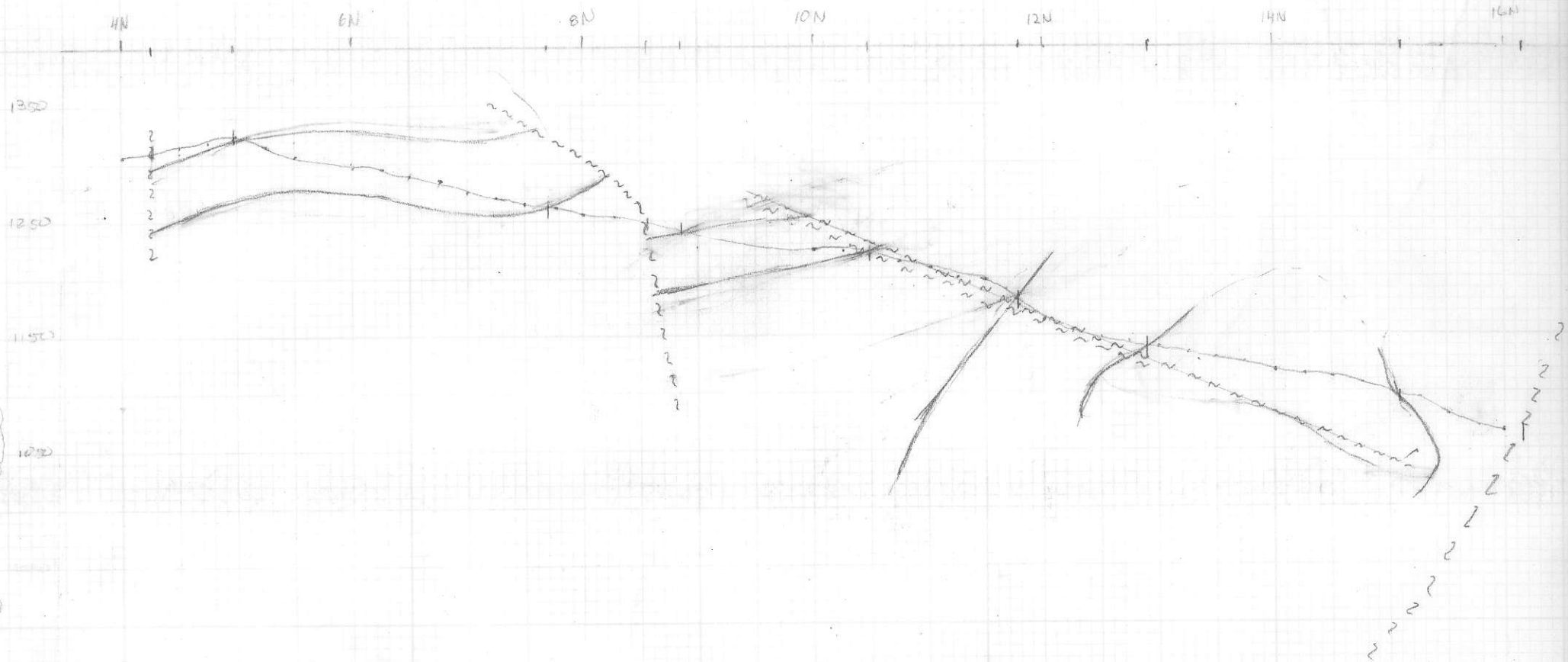




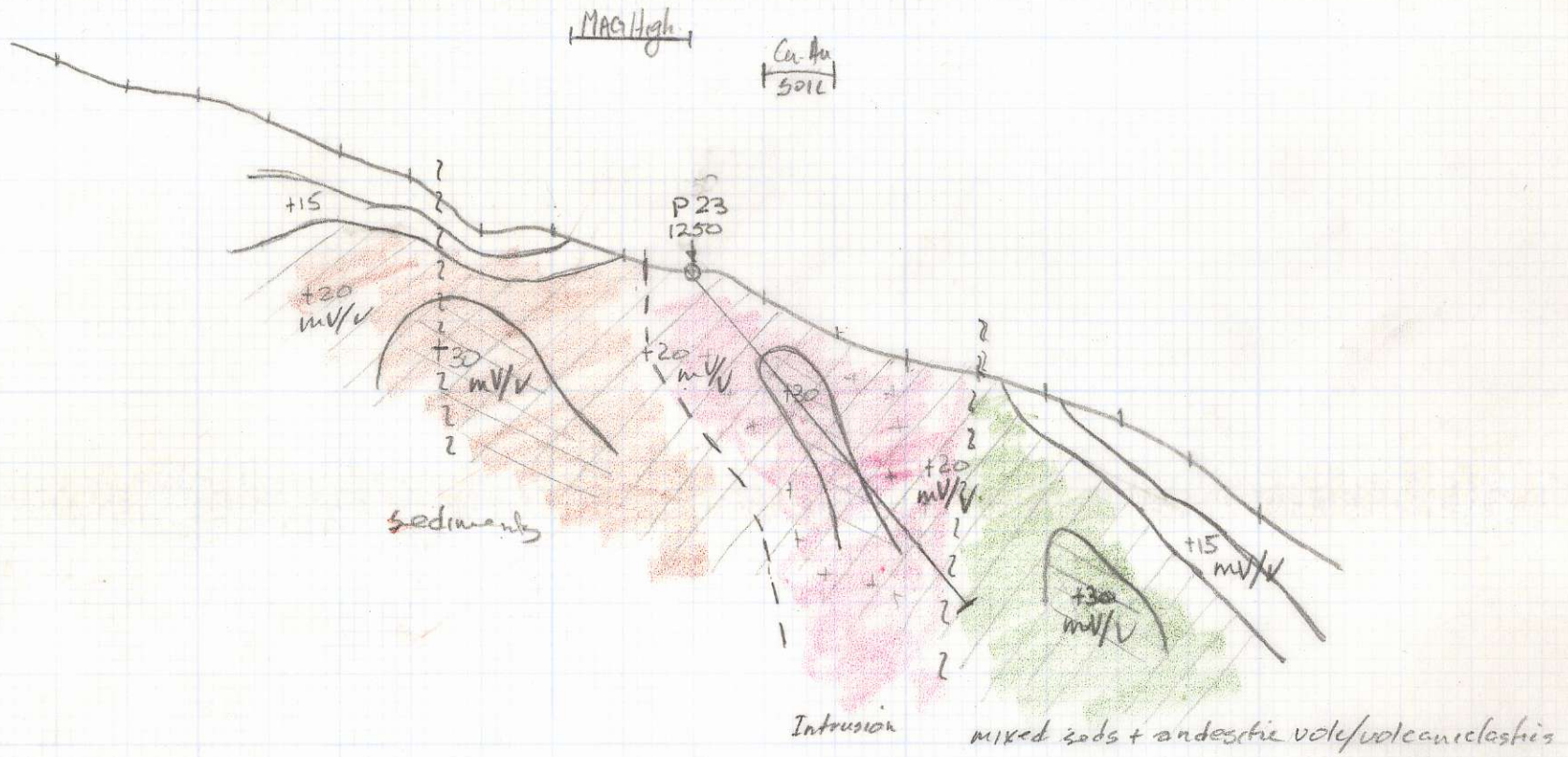
Section 7+50 E



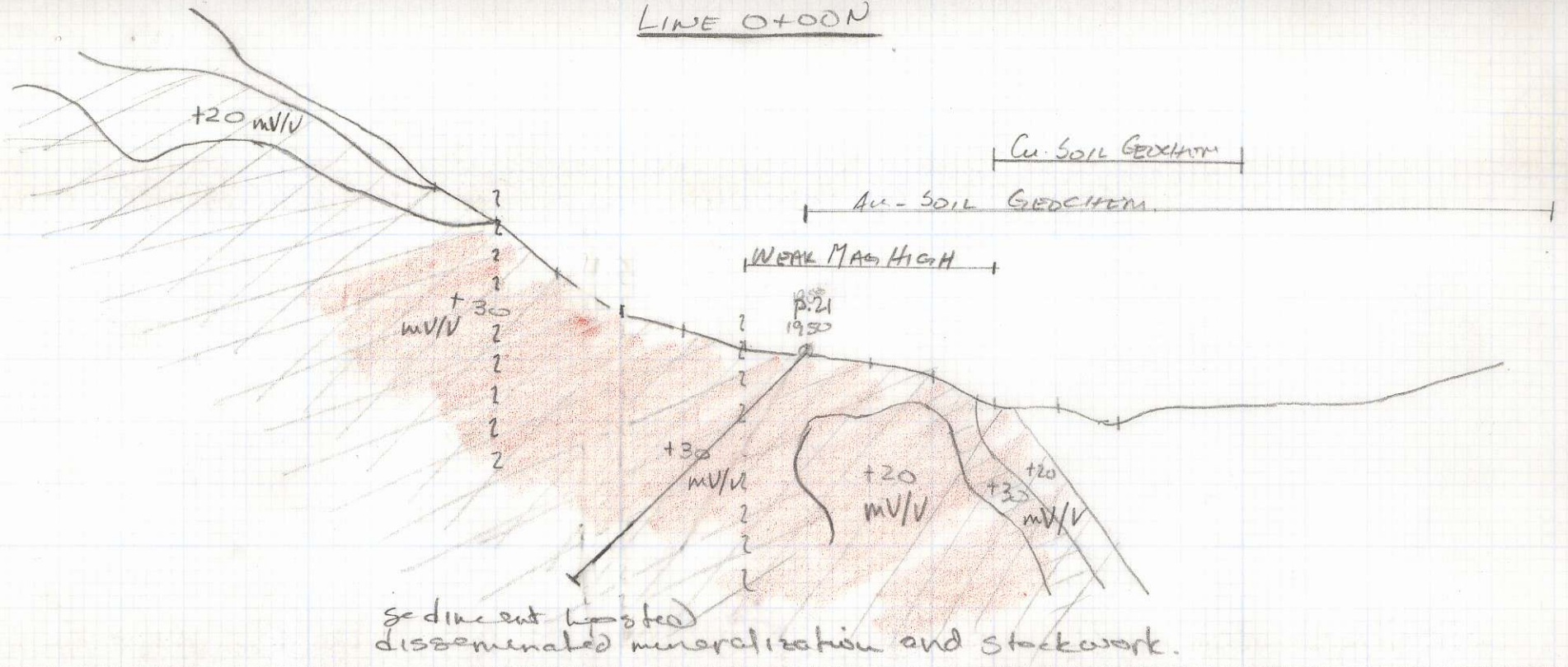
Section 9450E



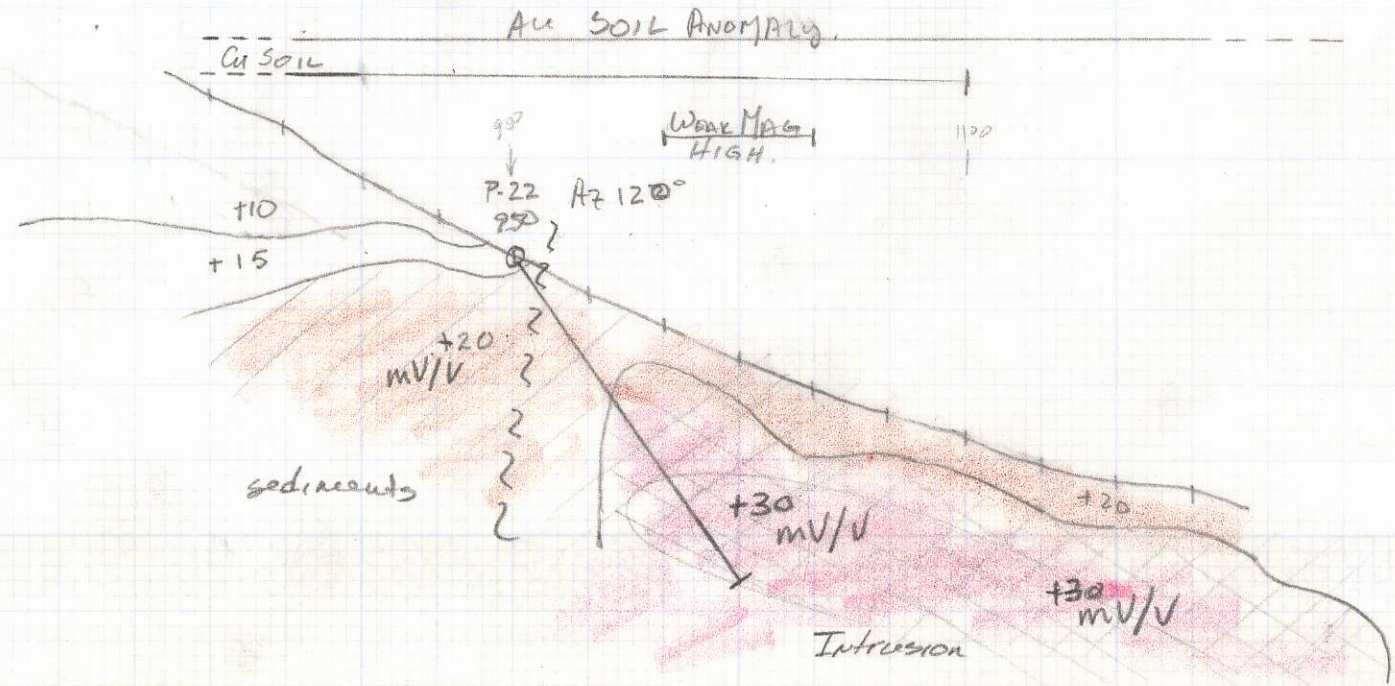
L41005



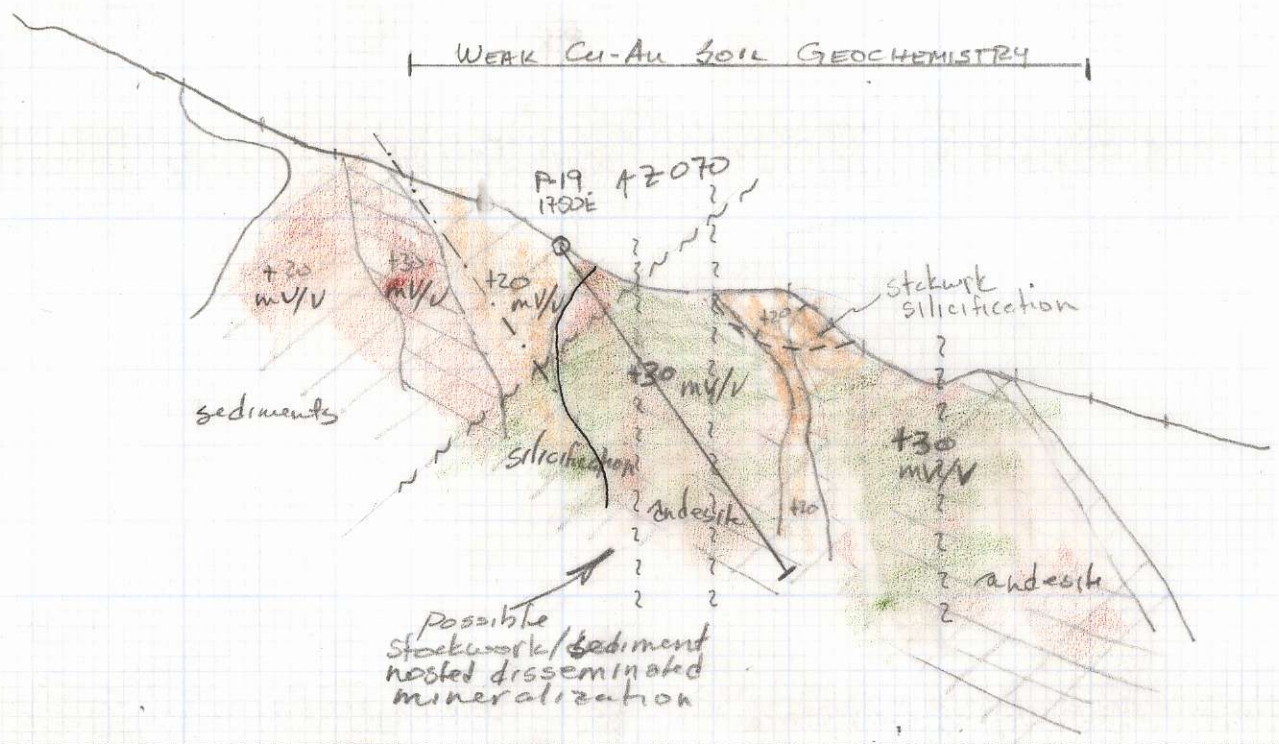
LINE 0+00N



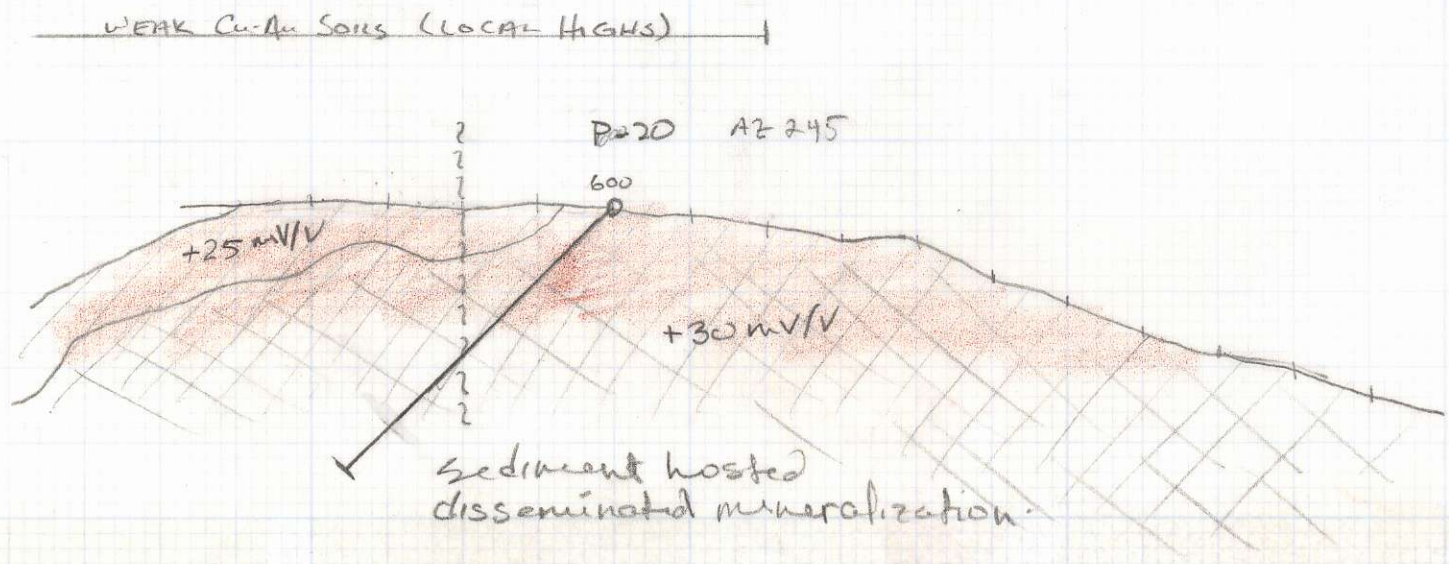
LINE 2+00S



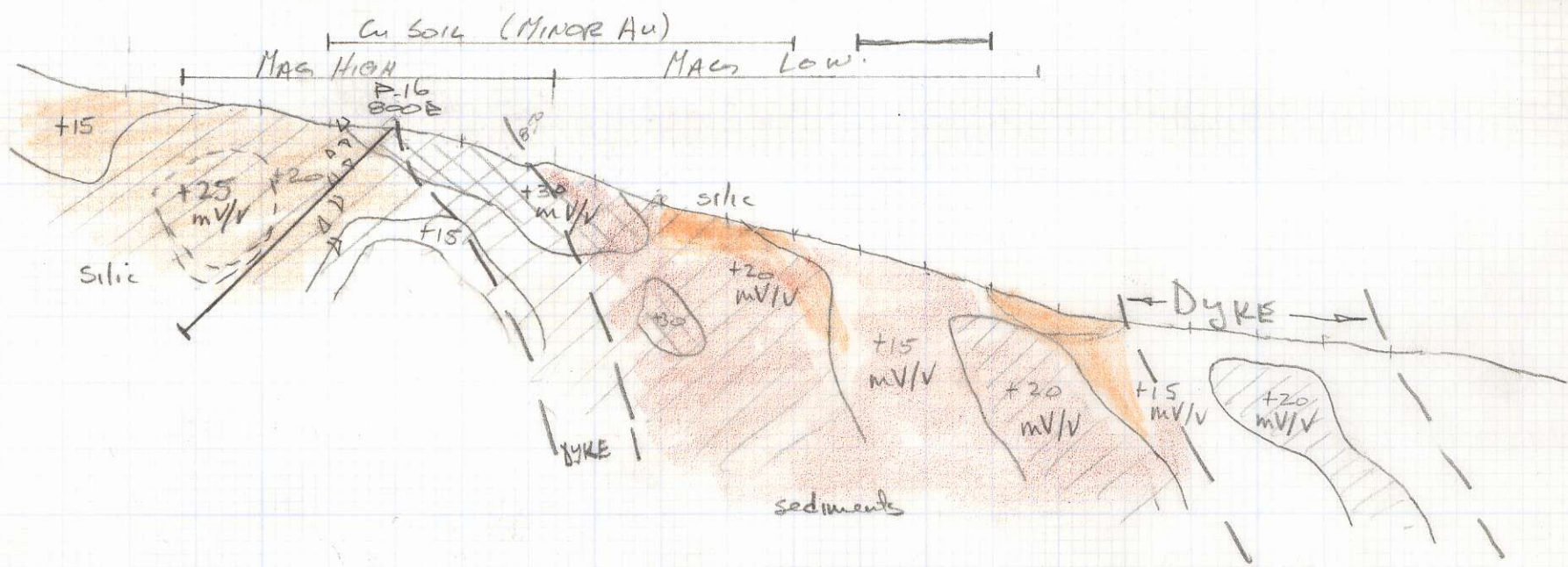
L2+00N



L0+00N



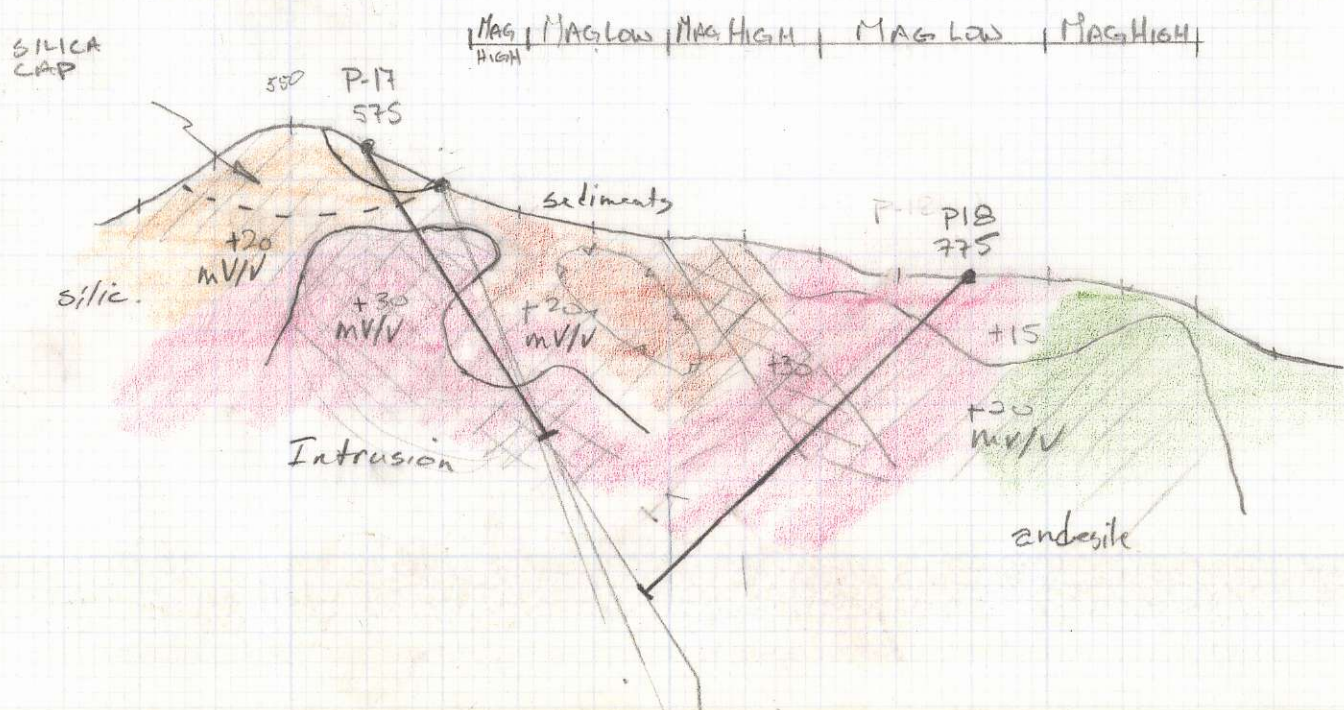
LINE 4+00N.



Cu-Au SOIL ANOMALY

LINE 2+00N

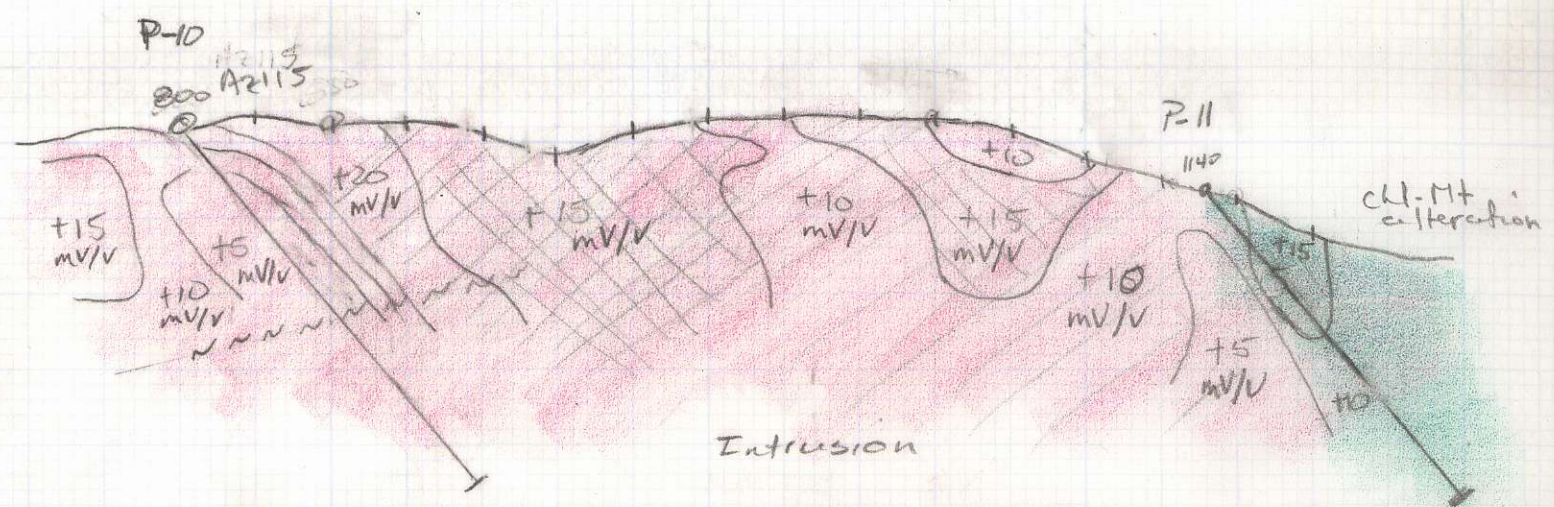
Cu-Au SOIL ANOMALY



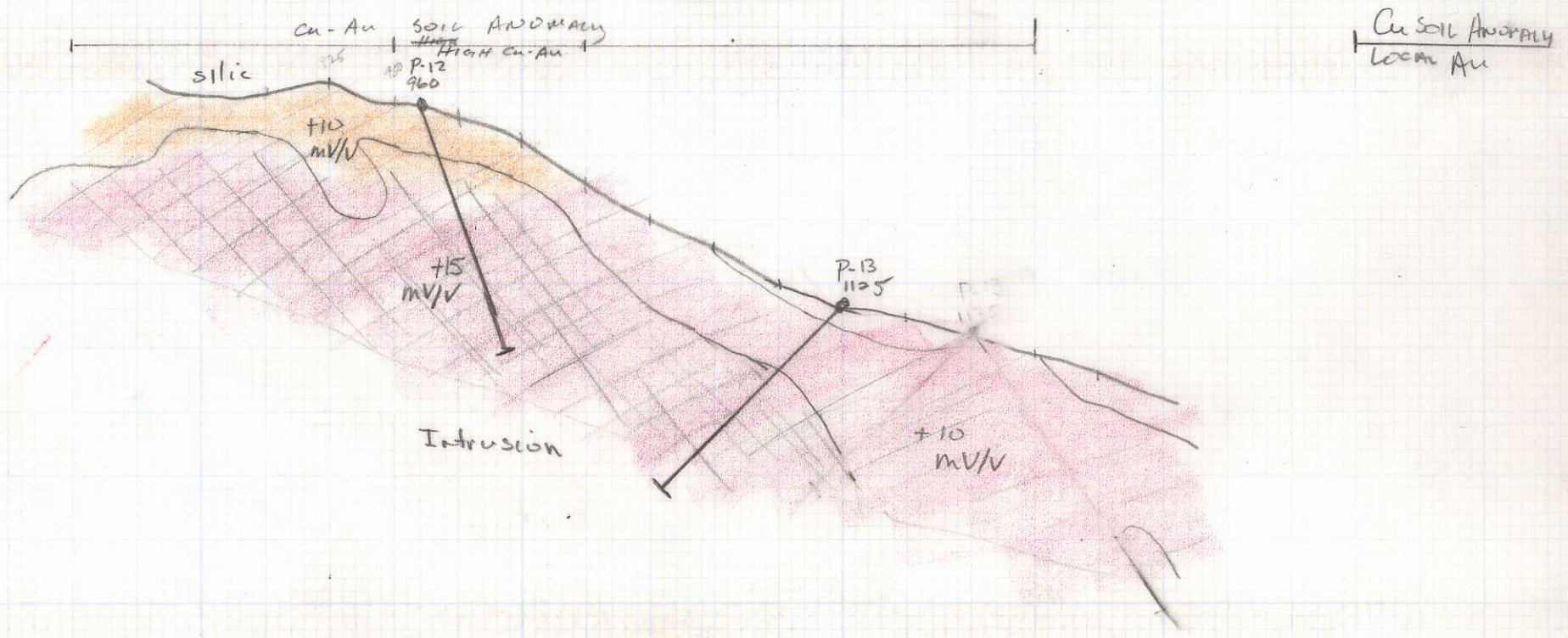


L12100N

Cu-Au SOIL GEOCHEM



L10100N

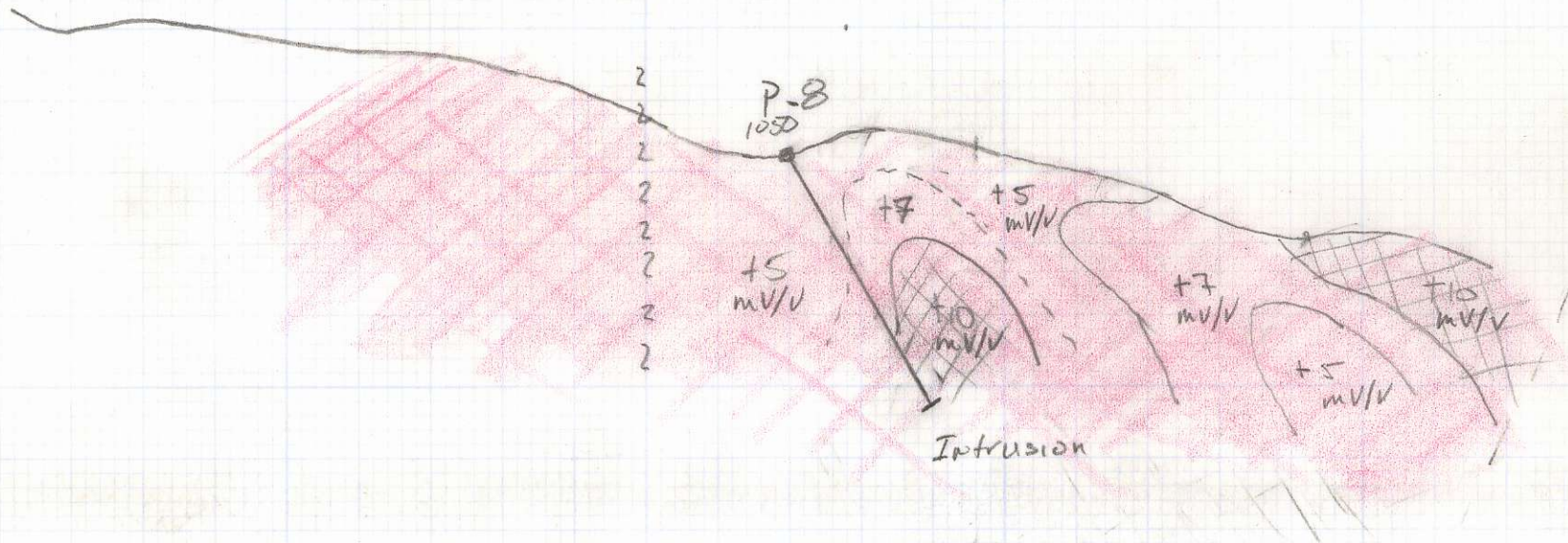




L20400N

MAG HIGH

Cu - Au SOIL ANOMALY



L14400N

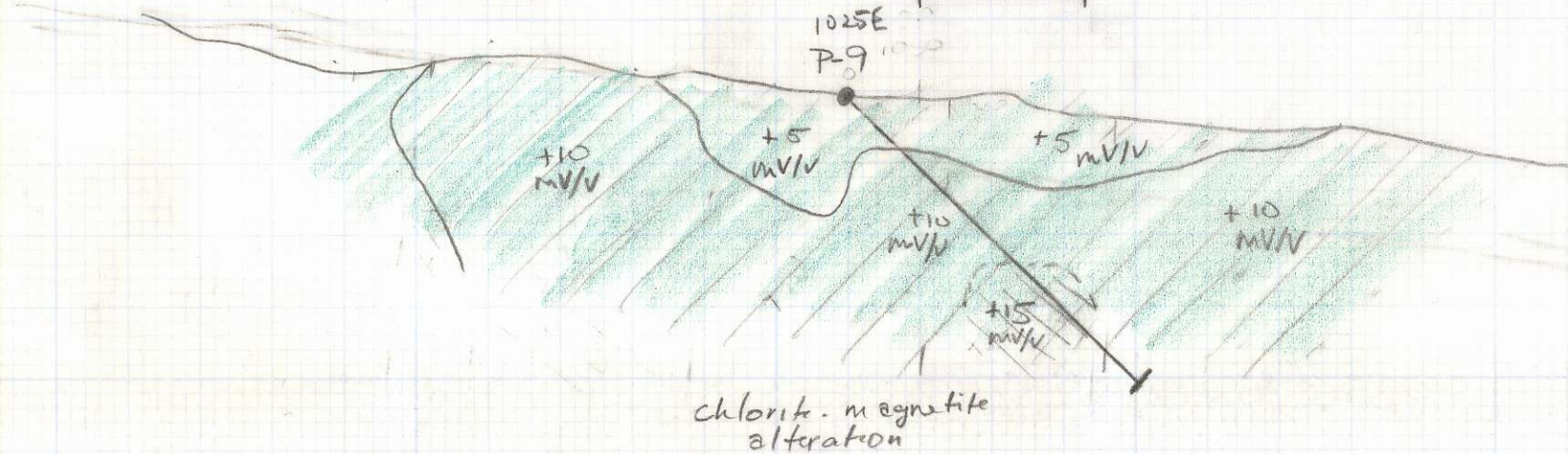
STRONG MAG

Cu ANOMALY

Au

1025E

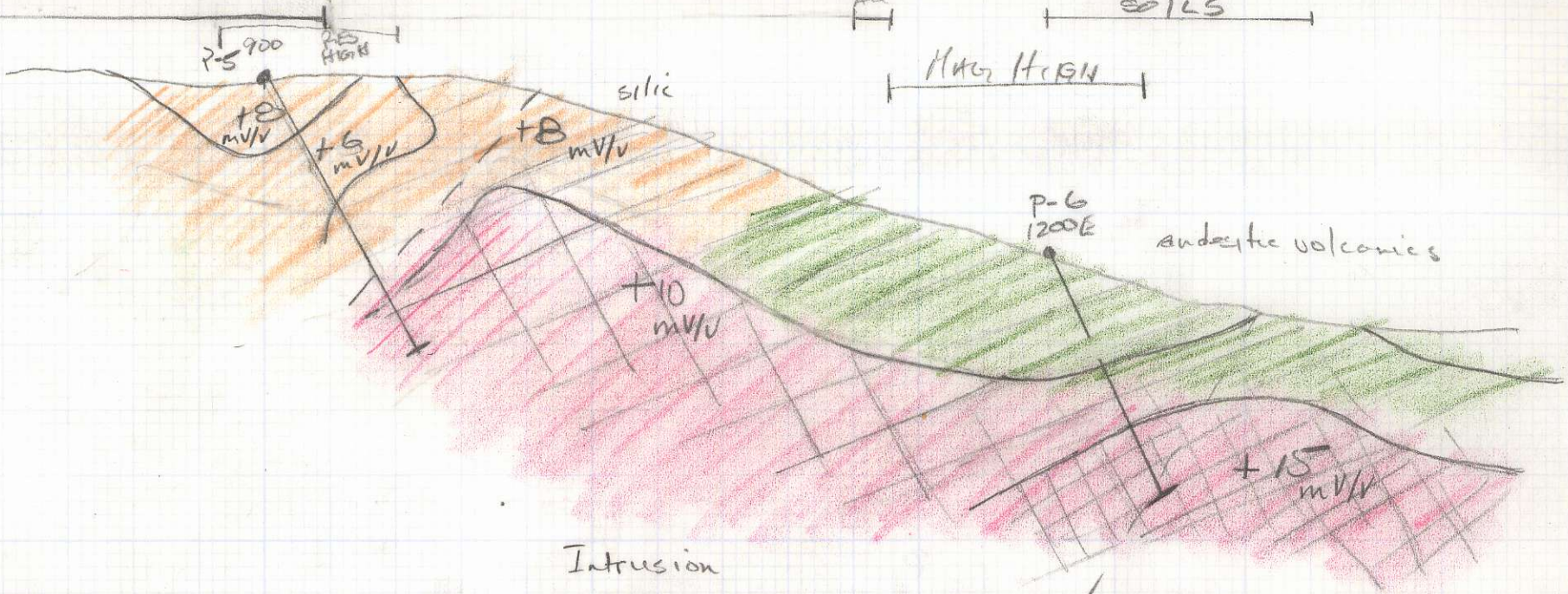
P-9 1000



Cu-Soil Anomaly

L24+00N

Cu-Au  
SOILS



L22+00N

silic

Cu-Au

MAG ANOMALY

Cu

