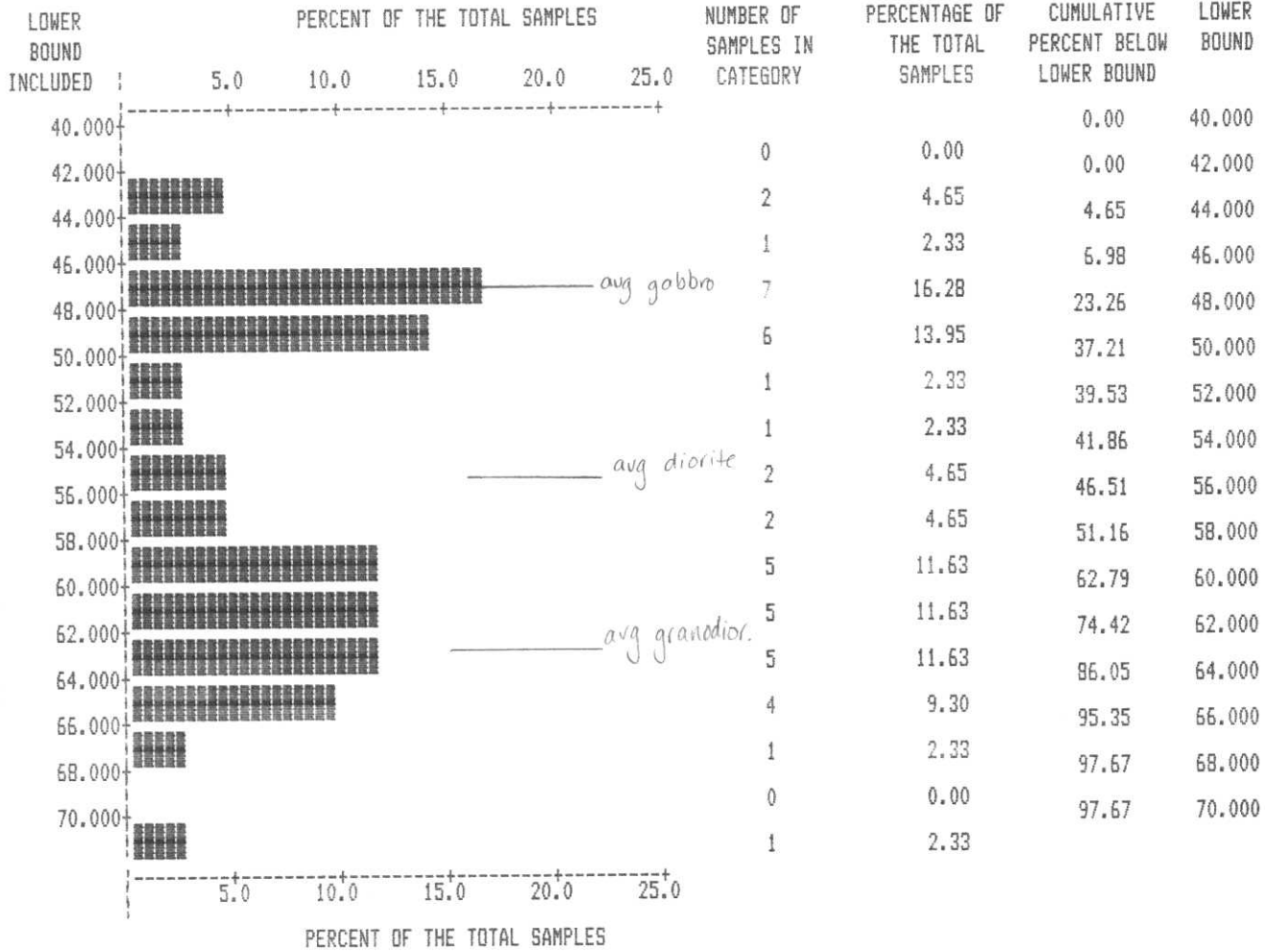


*SiO<sub>2</sub> in Nelson Intrusives*  
*Richter-Lithochem*  
**824088**

DATA TITLE : RICHTER LITHOS

VARIABLE : SI02



VARIABLE: SI02  
 NUMBER OF OBSERVATIONS: 43  
 MINIMUM: 43.050  
 MAXIMUM: 71.140  
 MEAN: 55.772  
 STANDARD ERROR OF MEAN: 1.157  
 STANDARD DEVIATION: 7.584  
 COEFFICIENT OF VARIATION: 13.598  
 SKEWNESS: -0.029  
 KURTOSIS: -1.359

```

*****      *      *      *      *      *      *
*      *      *      *      *      *      *
*      *      *      *      *      *      *
*      *      *      *      *      *      *
*****      *      *      *      *      *
    
```

A PROGRAM IN THE Q'GAS SYSTEM TO PREPARE  
DATA FOR USE WITH OTHER Q'GAS PROGRAMS

Version 5.0.3

March 1986

(c) Copyright O.P. Lavin & Associates and Queen's University. This material is licensed to individual users or organizations and may not be reproduced or distributed for use by non-license holders. Q'GAS is a registered trade mark of Queen's University.

INPUT DATA TITLE: RICHTER LITHOS

THE FOLLOWING VARIABLES HAVE BEEN RECOGNIZED ON THE INPUT DATA SET.

```

AL203      BA      CAO      FE203      K20      MGO      MNO2
NA20      P205     SIO2     TIO2      S        TOTAL_PE  ROCKTYPE
ALTERAT
    
```

\*\* THE FOLLOWING SPECIAL VALUES WERE RECODED TO EQUAL -1234.567 \*\*

VARIABLE NAME SPECIAL VALUE

```

AL203      -999.000
BA          -999.000
CAO         -999.000
FE203      -999.000
K20         -999.000
MGO         -999.000
MNO2        -999.000
NA20        -999.000
P205        -999.000
SIO2        -999.000
TIO2        -999.000
S           -999.000
TOTAL_PE    -999.000
ROCKTYPE    -999.000
ALTERAT     -999.000
    
```

THE FOLLOWING VARIABLES WERE TRANSFERRED TO THE OUTPUT DATA SET.

```

AL203      BA      CAO      FE203      K20      MGO      MNO2
NA20      P205     SIO2     TIO2      S        TOTAL_PE  ROCKTYPE
ALTERAT
    
```

NUMBER OF OUTPUT SAMPLES = 141  
NUMBER OF OUTPUT VARIABLES = 15

6

```

****      *****      *      *      *      *      *
*      *      *      *      *      *      *
*      *      *      *      *      *      *
*      *      *      *      *      *      *
****      *****      *      *      *      *
    
```

A PROGRAM IN THE Q'GAS SYSTEM TO CALCULATE  
UNIVARIATE STATISTICS AND DISPLAY HISTOGRAMS

Version 5.0.3

March 1986

(c) Copyright O.P. Lavin & Associates and Queen's University. This material is licensed to individual users or organizations and may not be reproduced or distributed for use by non-license holders. Q'GAS is a registered trade mark of Queen's University.

DATA TITLE: RICHTER LITHOS

THE FOLLOWING VARIABLES ARE IN THE DATA SET:

```

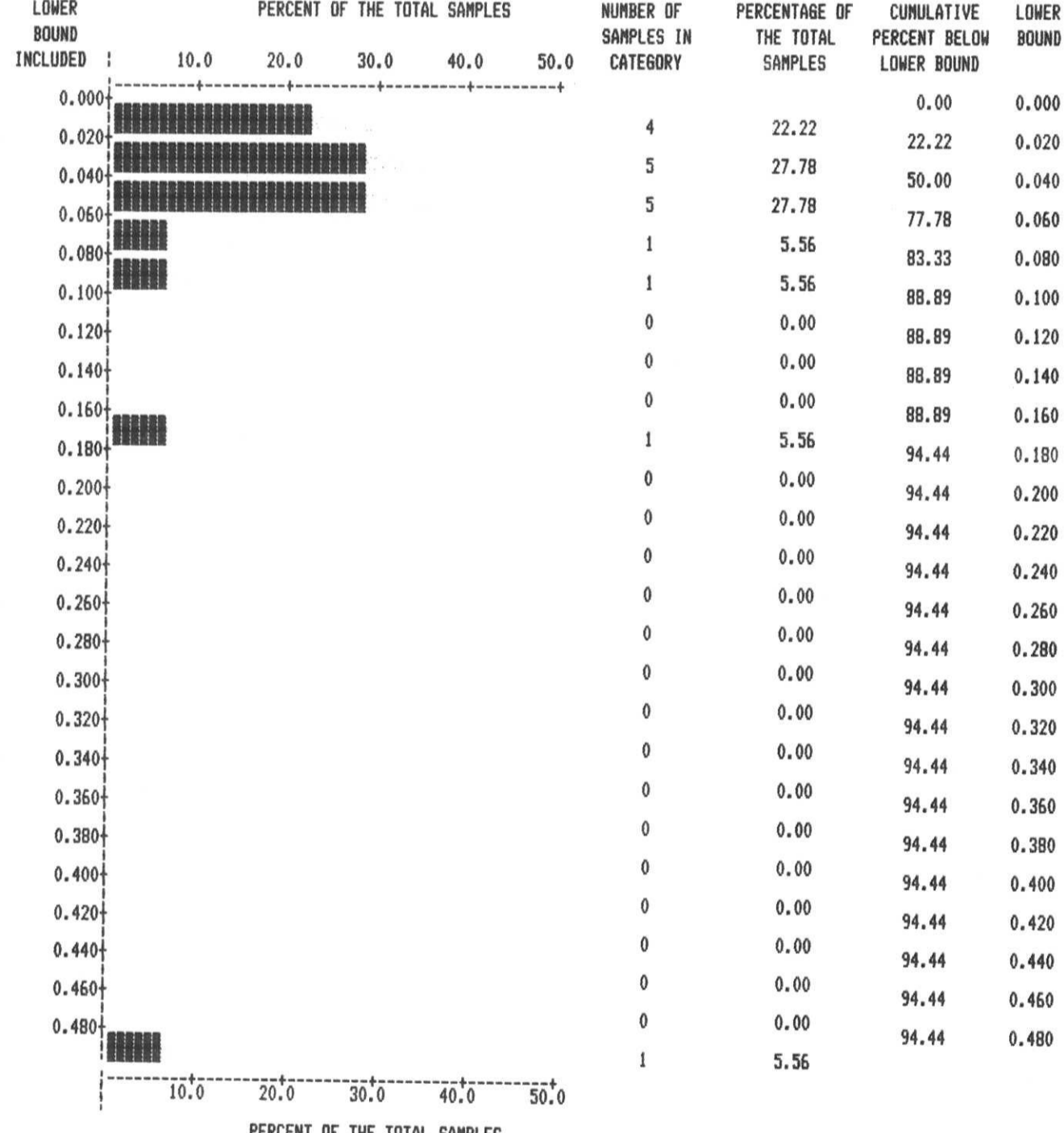
AL203      BA      CAO      FE203      K20      MGO      MNO2      NA20
P205      SIO2
TIO2      S        TOTAL_PE  ROCKTYPE  ALTERAT
    
```

\*\* THE FOLLOWING SELECTION CRITERIA WILL BE SATISFIED IN THIS RUN. \*\*

SAMPLES WITH  
ROCKTYPE BETWEEN 7.500000 AND 8.700000  
AND  
ALTERAT BETWEEN -0.5000000 AND 0.5000000  
WILL BE SELECTED.

DATA TITLE : RICHTER LITHOS

VARIABLE : BA



VARIABLE: BA

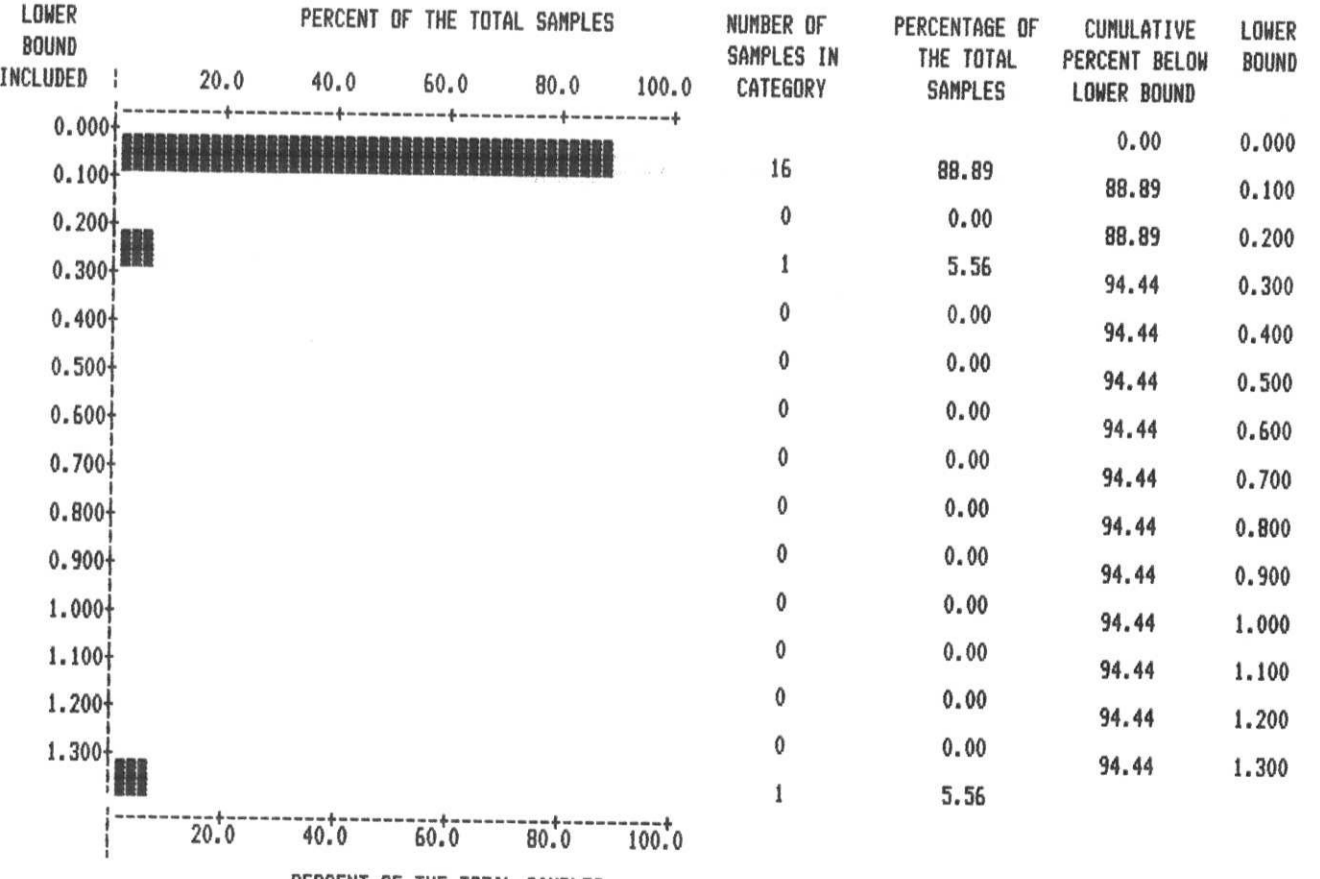
NUMBER OF OBSERVATIONS: 18  
MINIMUM: 0.013  
MAXIMUM: 0.485  
MEAN: 0.068  
STANDARD ERROR OF MEAN: 0.026  
STANDARD DEVIATION: 0.111  
COEFFICIENT OF VARIATION: 163.576  
SKEWNESS: 2.991  
KURTOSIS: 8.366

\*\*\*\*\*  
WE WILL NOW MAKE ANOTHER PASS THROUGH THE DATA.

THE SAME TRANSFORMATIONS AND SELECTIONS AS LAST RUN WILL BE USED IN THIS RUN.

DATA TITLE : RICHTER LITHOS

VARIABLE : S



VARIABLE: S

NUMBER OF OBSERVATIONS: 18  
MINIMUM: 0.010  
MAXIMUM: 1.360  
MEAN: 0.113  
STANDARD ERROR OF MEAN: 0.075  
STANDARD DEVIATION: 0.316  
COEFFICIENT OF VARIATION: 279.090  
SKEWNESS: 3.385  
KURTOSIS: 10.415

```

****   *****   *****   *   *****   *****
* * * * *   *   * *   *   *
* * *****   *   * *   *   *****
* * * * *   *   *****   *   *
****   *****   *   * *   *   *****

```

26-JAN-90

A PROGRAM IN THE Q'GAS SYSTEM TO CALCULATE  
UNIVARIATE STATISTICS AND DISPLAY HISTOGRAMS

Version 5.0.3

March 1986

(c) Copyright D.P. Lavin & Associates and Queen's University. This material is licensed to individual users or organizations and may not be reproduced or distributed for use by non-license holders. Q'GAS is a registered trade mark of Queen's University.

DATA TITLE: RICHTER LITHOS

THE FOLLOWING VARIABLES ARE IN THE DATA SET:

```

AL203   BA       CAO       FE203   K2O       MGO       MN02       NA20
P205   SI02
TI02   S         TOTAL_PE  ROCKTYPE  ALTERAT

```

\*\* THE FOLLOWING SELECTION CRITERIA WILL BE SATISFIED IN THIS RUN. \*\*

SAMPLES WITH  
ROCKTYPE BETWEEN 4.500000 AND 8.500000  
AND  
ALTERAT BETWEEN -0.500000 AND 0.500000  
WILL BE SELECTED.

\*\*\*\*\*

WE WILL NOW MAKE ANOTHER PASS THROUGH THE DATA.

THE SAME TRANSFORMATIONS AND SELECTIONS AS LAST RUN WILL BE USED IN THIS RUN.

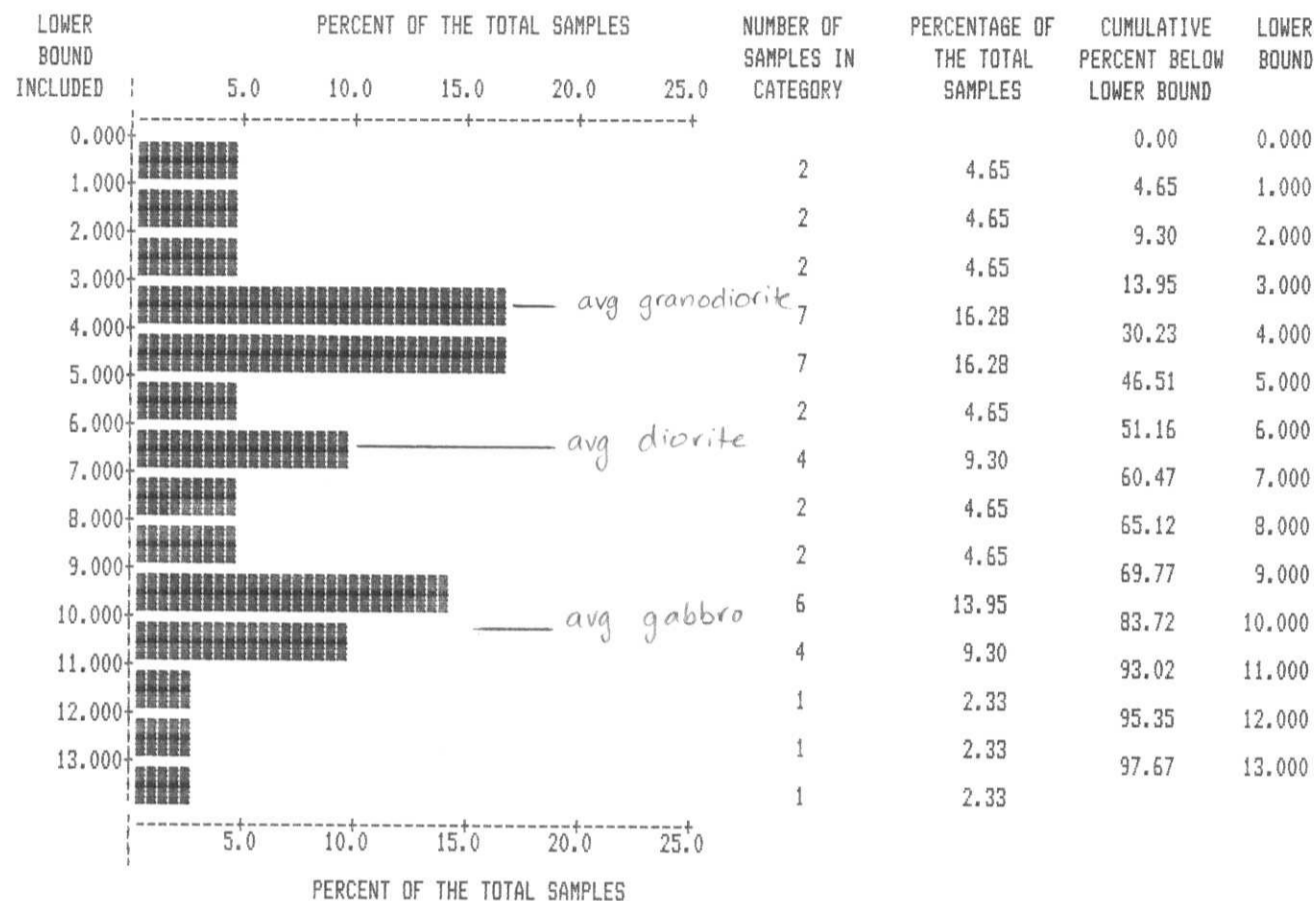
\*\*\*\*\*

WE WILL NOW MAKE ANOTHER PASS THROUGH THE DATA.

THE SAME TRANSFORMATIONS AND SELECTIONS AS LAST RUN WILL BE USED IN THIS RUN.

DATA TITLE : RICHTER LITHOS

VARIABLE : CAO

*CaO in Nelson Intrusives*

VARIABLE: CAO  
NUMBER OF OBSERVATIONS: 43  
MINIMUM: 0.010  
MAXIMUM: 13.210  
MEAN: 6.314  
STANDARD ERROR OF MEAN: 0.514  
STANDARD DEVIATION: 3.371  
COEFFICIENT OF VARIATION: 53.389  
SKEWNESS: 0.192  
KURTOSIS: -1.039

\*\*\*\*\*

WE WILL NOW MAKE ANOTHER PASS THROUGH THE DATA.

THE SAME TRANSFORMATIONS AND SELECTIONS AS LAST RUN WILL BE USED IN THIS RUN.

\*\*\*\*\*

WE WILL NOW MAKE ANOTHER PASS THROUGH THE DATA.

THE SAME TRANSFORMATIONS AND SELECTIONS AS LAST RUN WILL BE USED IN THIS RUN.

\*\*\*\*\*

WE WILL NOW MAKE ANOTHER PASS THROUGH THE DATA.

THE SAME TRANSFORMATIONS AND SELECTIONS AS LAST RUN WILL BE USED IN THIS RUN.

\*\*\*\*\*

WE WILL NOW MAKE ANOTHER PASS THROUGH THE DATA.

THE SAME TRANSFORMATIONS AND SELECTIONS AS LAST RUN WILL BE USED IN THIS RUN.

\*\*\*\*\*

WE WILL NOW MAKE ANOTHER PASS THROUGH THE DATA.

THE SAME TRANSFORMATIONS AND SELECTIONS AS LAST RUN WILL BE USED IN THIS RUN.

\*\*\*\*\*

WE WILL NOW MAKE ANOTHER PASS THROUGH THE DATA.

THE SAME TRANSFORMATIONS AND SELECTIONS AS LAST RUN WILL BE USED IN THIS RUN.

\*\*\*\*\*

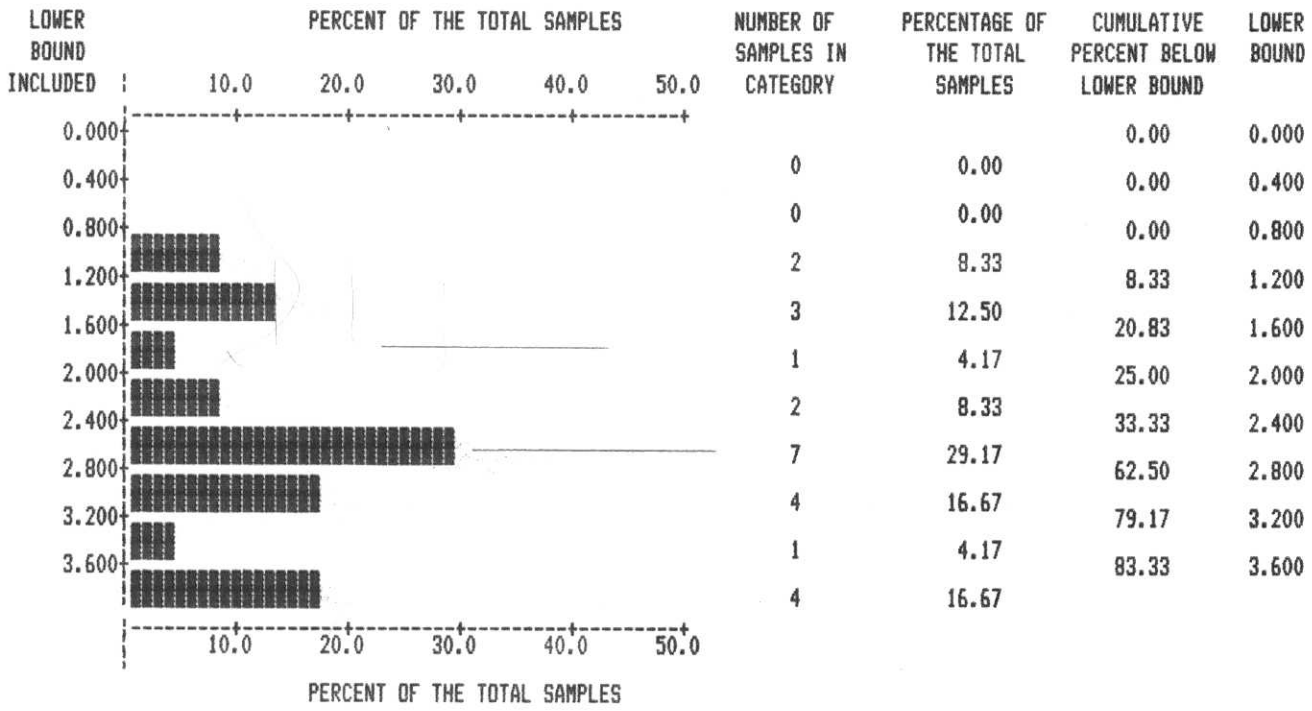
WE WILL NOW MAKE ANOTHER PASS THROUGH THE DATA.

THE SAME TRANSFORMATIONS AND SELECTIONS AS LAST RUN WILL BE USED IN THIS RUN.

DATA TITLE : richter lithos

*K20* *qbite & Granodio*

VARIABLE : K20



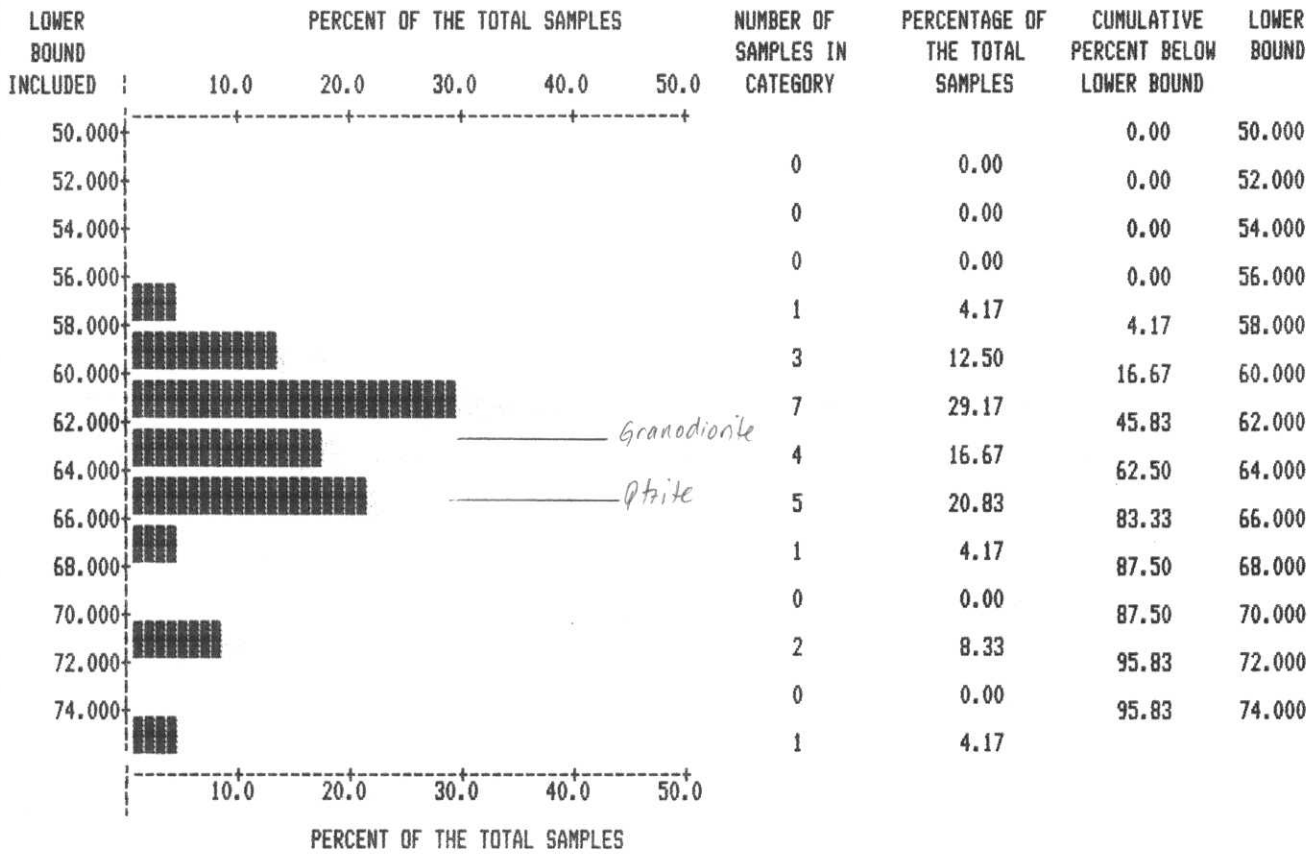
VARIABLE: K20  
 NUMBER OF OBSERVATIONS: 24  
 MINIMUM: 0.820  
 MAXIMUM: 3.980  
 MEAN: 2.527  
 STANDARD ERROR OF MEAN: 0.182  
 STANDARD DEVIATION: 0.891  
 COEFFICIENT OF VARIATION: 35.260  
 SKEWNESS: -0.245  
 KURTOSIS: -0.901

DATA TITLE : richter lithos

SiO2

Qtzite & Granodior

VARIABLE : SI02



VARIABLE: SI02  
 NUMBER OF OBSERVATIONS: 24  
 MINIMUM: 57.970  
 MAXIMUM: 74.200  
 MEAN: 63.382  
 STANDARD ERROR OF MEAN: 0.857  
 STANDARD DEVIATION: 4.199  
 COEFFICIENT OF VARIATION: 6.625  
 SKEWNESS: 1.036  
 KURTOSIS: 0.279

\*\*\*\*\*

WE WILL NOW MAKE ANOTHER PASS THROUGH THE DATA.

THE SAME TRANSFORMATIONS AND SELECTIONS AS LAST RUN WILL BE USED IN THIS RUN.