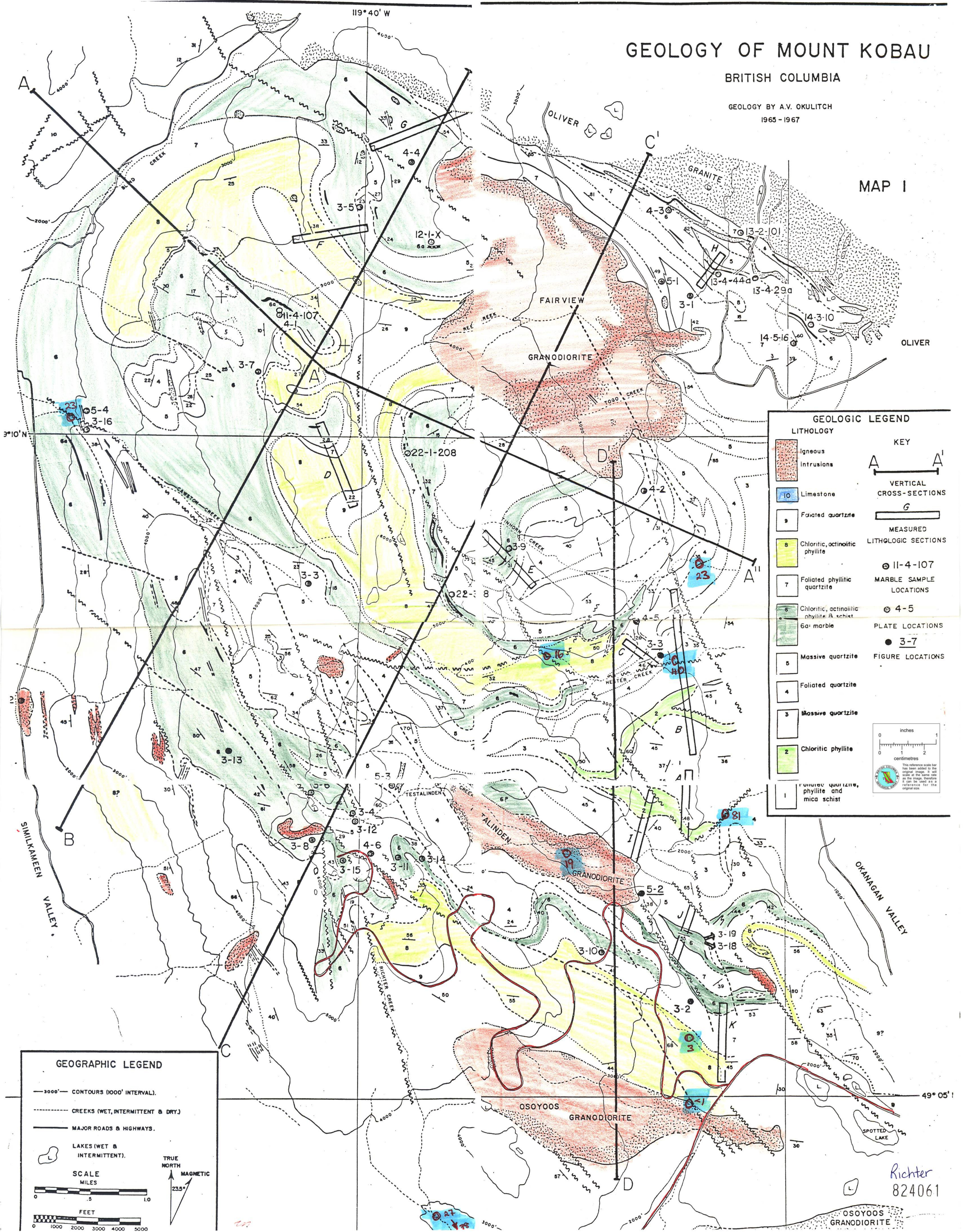


GEOLOGY OF MOUNT KOBAN

BRITISH COLUMBIA

GEOLOGY BY A.V. OKULITCH
1965-1967

MAP 1



GEOLOGIC LEGEND

LITHOLOGY		KEY	
	Igneous intrusions		VERTICAL CROSS-SECTIONS
	Limestone		MEASURED LITHOLOGIC SECTIONS
	Foliated quartzite		MARBLE SAMPLE LOCATIONS
	Chloritic, actinolitic phyllite		PLATE LOCATIONS
	Foliated phyllitic quartzite		FIGURE LOCATIONS
	Chloritic, actinolitic phyllite & schist		
	6a: marble		
	Massive quartzite		
	Foliated quartzite		
	Massive quartzite		
	Chloritic phyllite		
	Foliated quartzite, phyllite and mica schist		

0 1 2
inches

0 1 2
centimetres

This reference scale bar has been added to the original map. It will scale at the same rate as the map. The reference scale is not to be used as a reference for the original scale.

GEOGRAPHIC LEGEND

- 3000' CONTOURS (1000' INTERVAL).
- CREEKS (WET, INTERMITTENT & DRY)
- MAJOR ROADS & HIGHWAYS.
- LAKES (WET & INTERMITTENT).

SCALE
MILES
0 .5 1.0

FEET
0 1000 2000 3000 4000 5000

TRUE NORTH
MAGNETIC
23.5°

Richter
824061