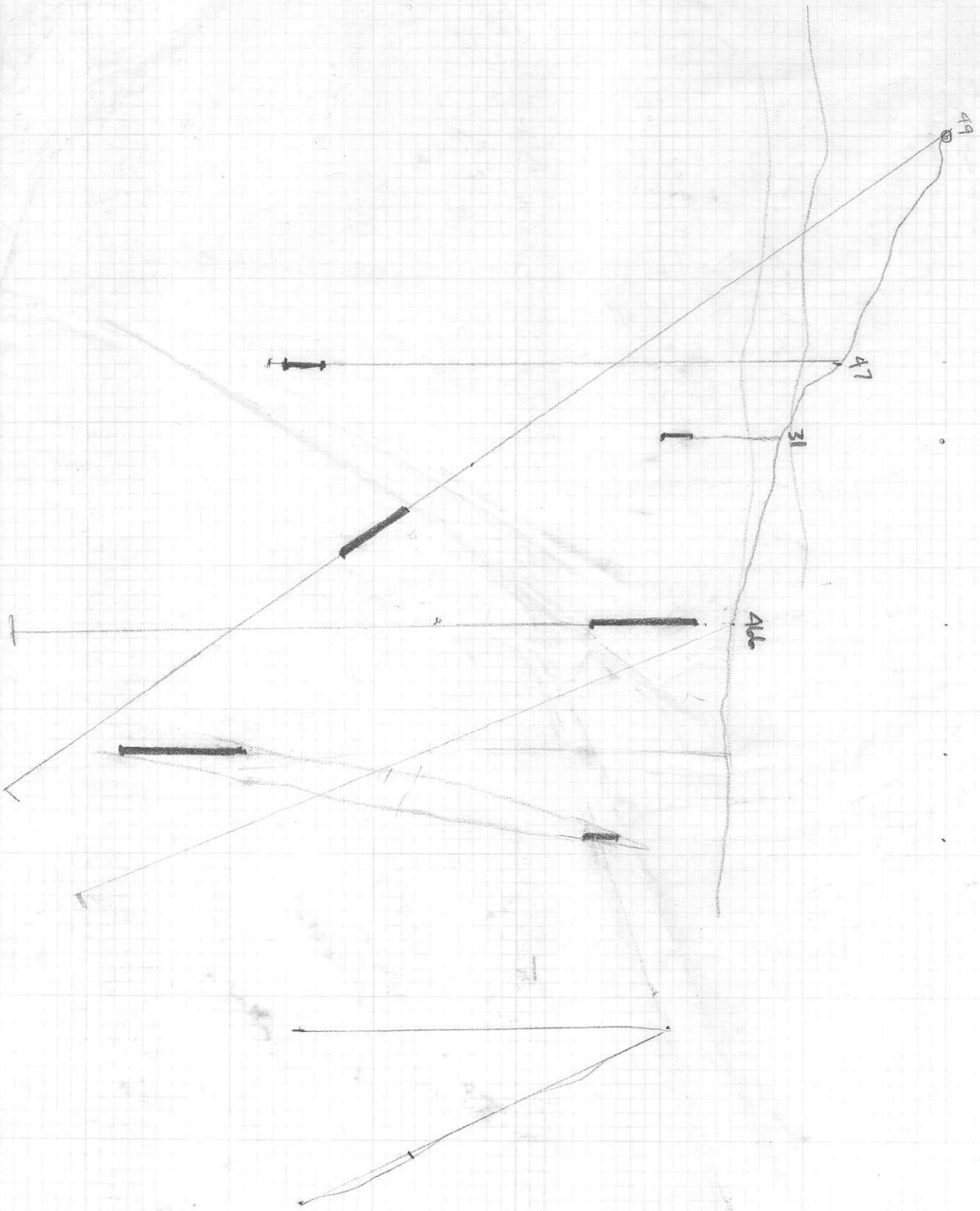
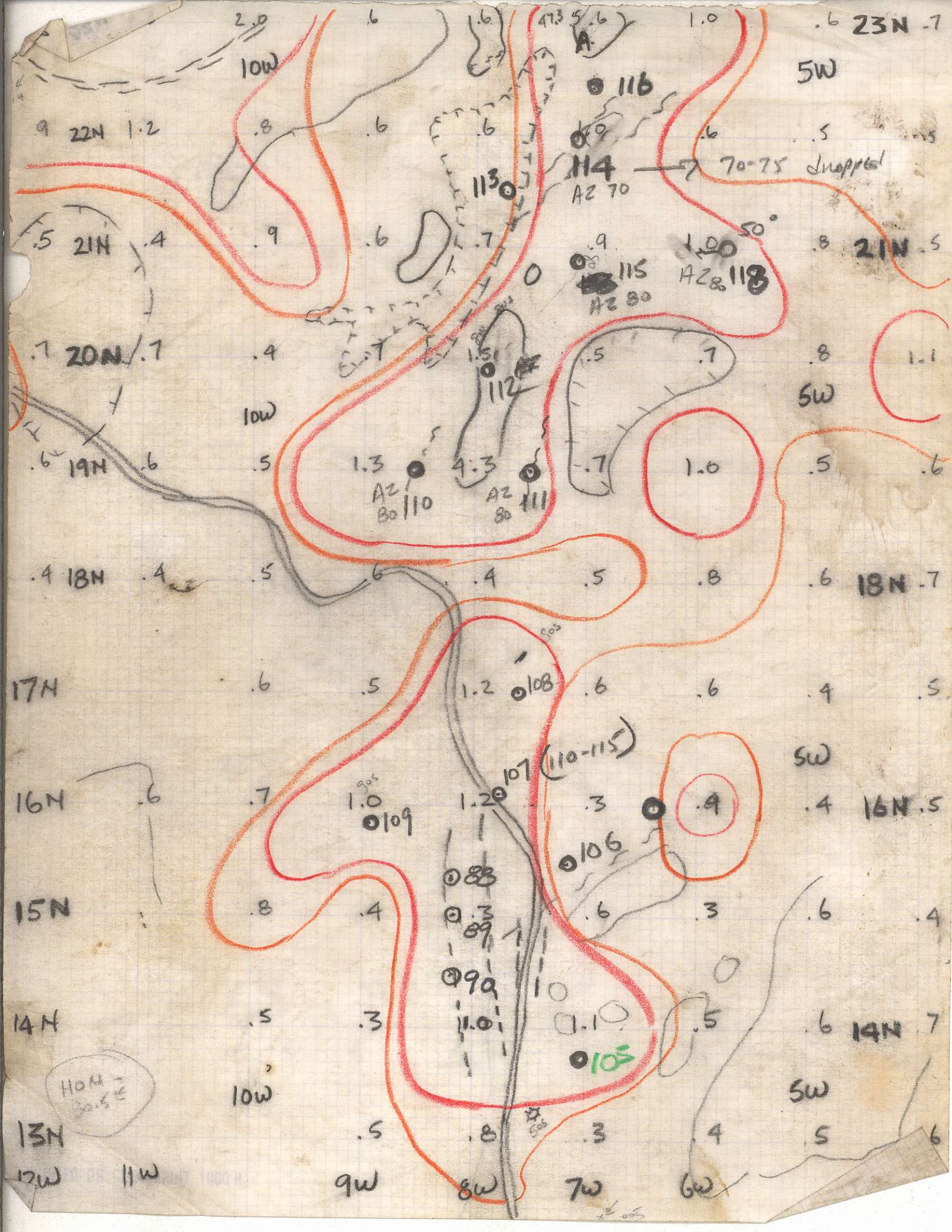
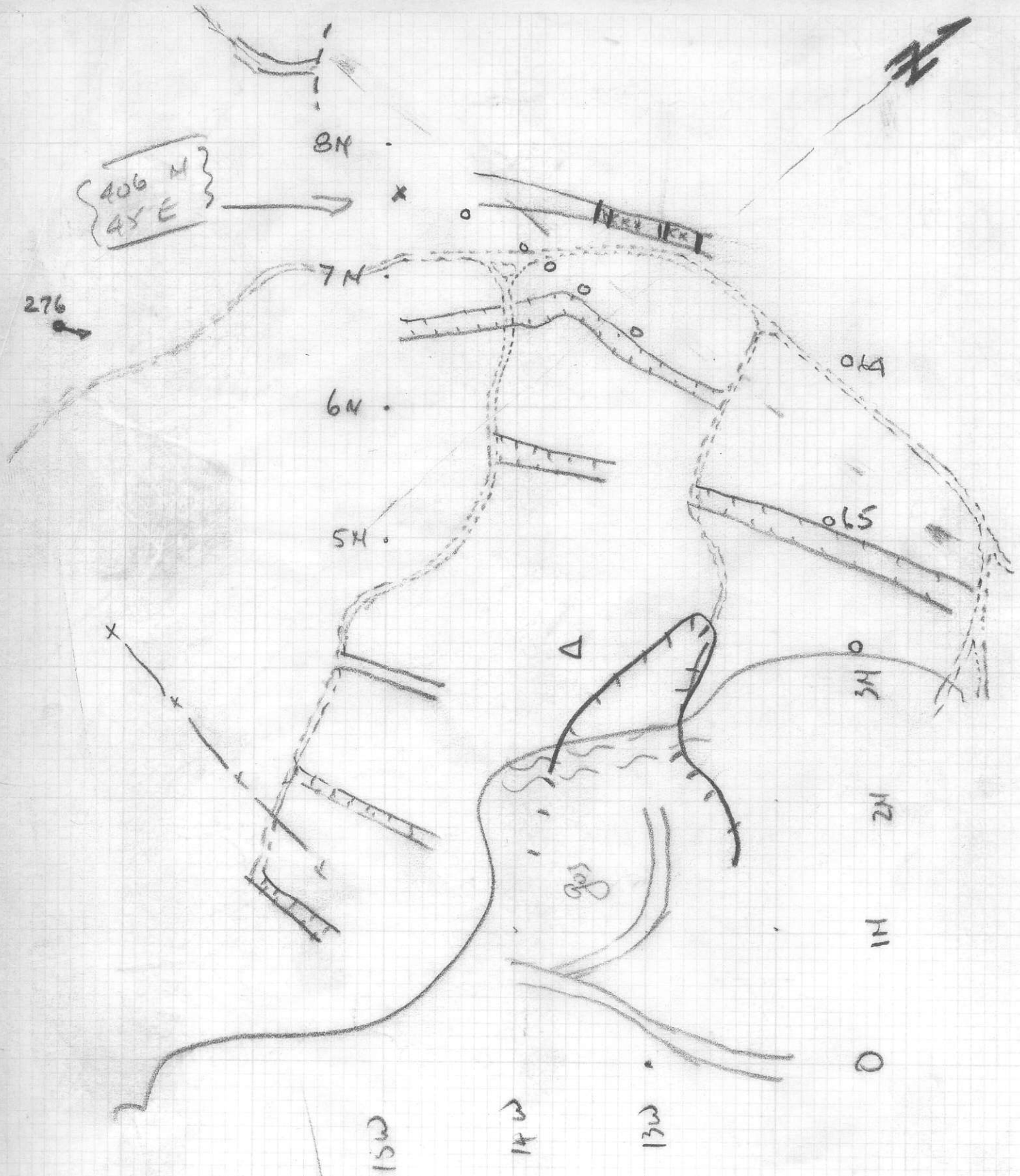


823915
Dusty Mac





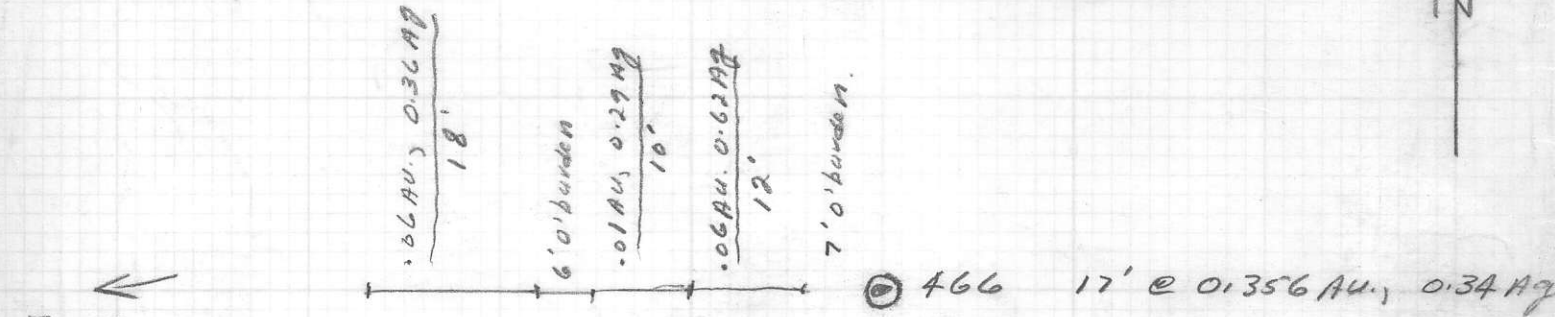
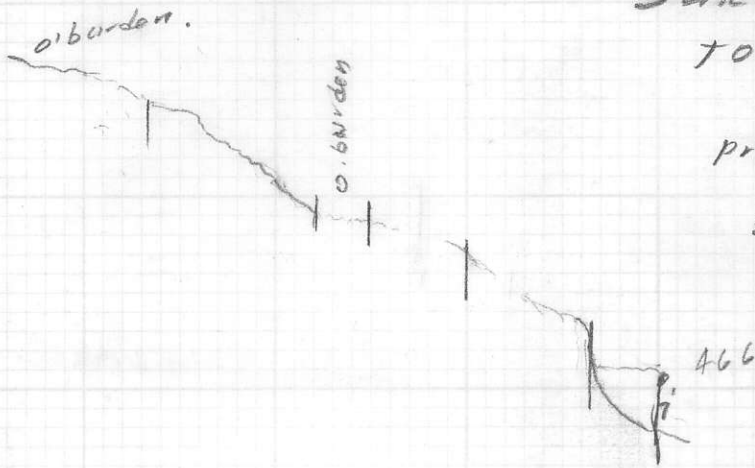


SEPT. 26/75

SURFACE SAMPLES
TO WEST OF HOLE 466

profile - very approx.

scale 1" = 20'



Zone
Continues.

17'	.356	6.052	.34	5.78
12'	.06	.72	.62	8.64
10'	.01	.10	.29	2.90
18'	.06	1.08	.36	6.48
57'		7.952		23.80

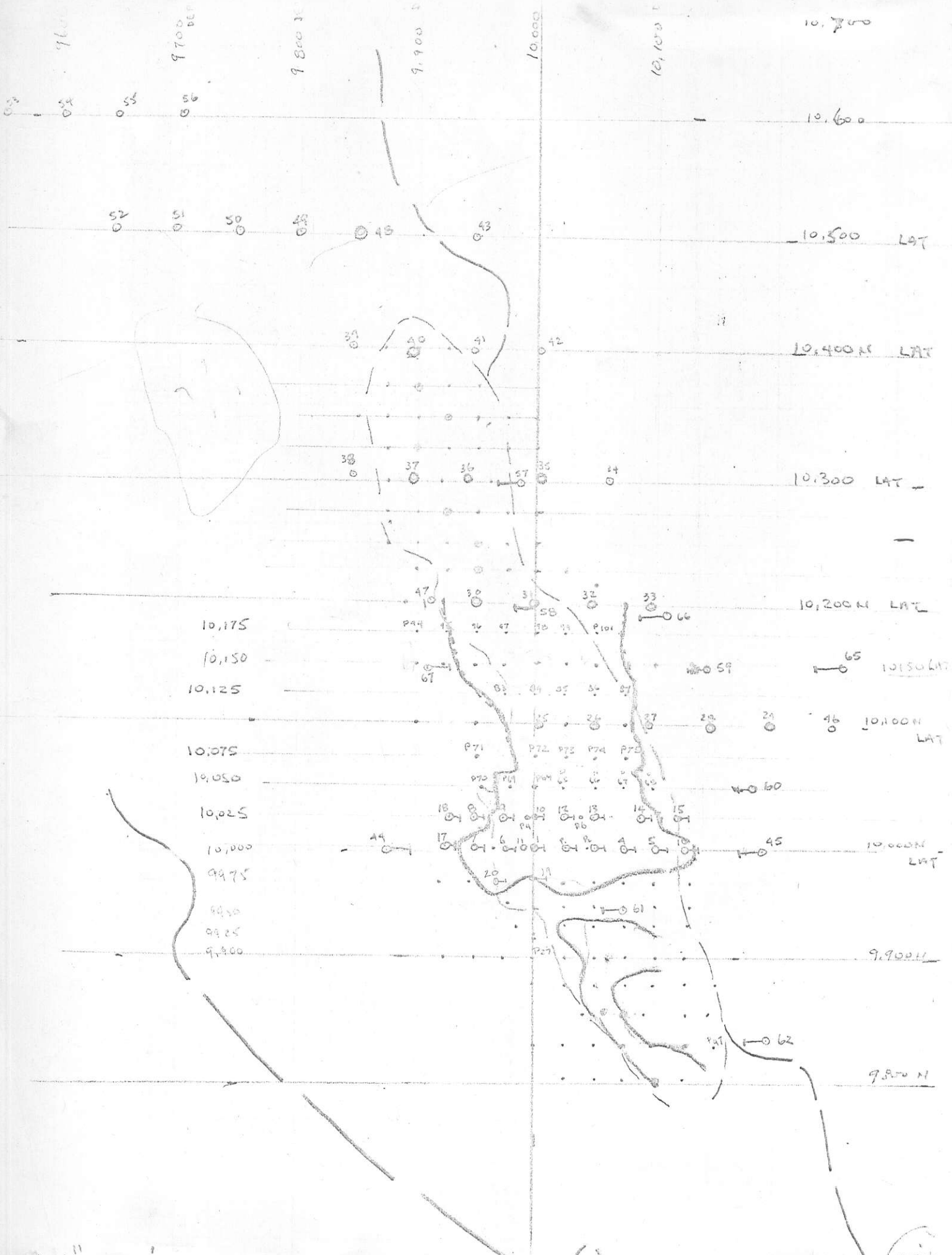
60' of .140 .42
 at 160.00 22.40
 at 5.00 2.10
 \$ 24.50

Note sample .03 AU .09 AU
12'

taken from siliceous o.c.
 approx 2400' N.W. of hole 466.

RECEIVED
 SEP 29 1975
 Ans'd.....

J.R.B



PRINTED ON CLEARPRINT 1000H

48 Angle Hole 49 51 (90') 152 (100')

© 150.00 Au
© 4.00 Ag

115-130'
-14
\$23.00

\$7.22
\$14.01

48 (50')

47 (100')
90-95
.038

39 15-20'
(6')
.085

(depth 115'
41

40 (45')

46 (45')

\$54.76

38
(120')

37
(70')

8-25 (50')
.356
-34

45 (100')

36
(110')

.228
85-110 (145')

43 (30')
20-25
.068

44 (250')

\$42.21

\$10.76

15W

14W

13W

12W

11W

10W

.4

.6

.5

5N

.6

1.8

.4

.6

4N

.2

.2

.4

3N

4.8

1.8

.4

2N

.5

3.3

.2

1N

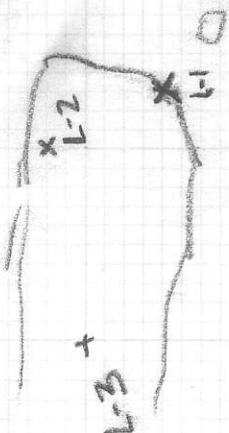
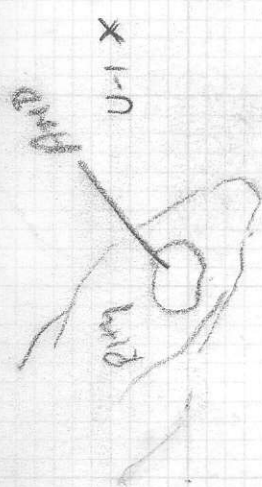
.4

.3

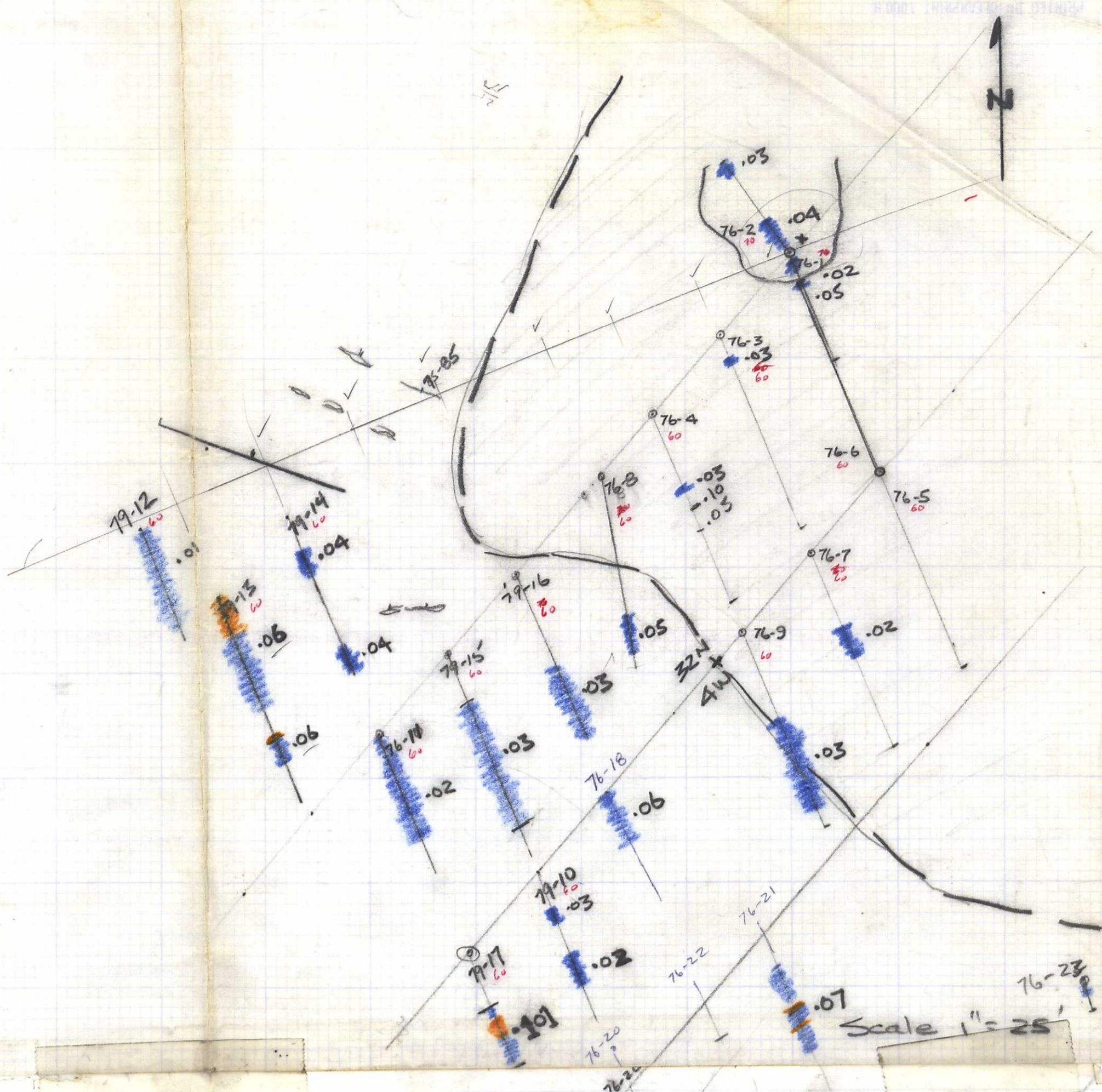
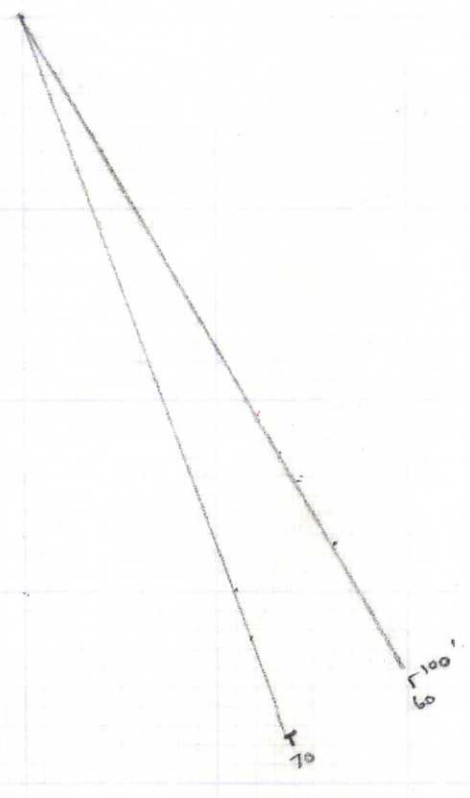
.3

0

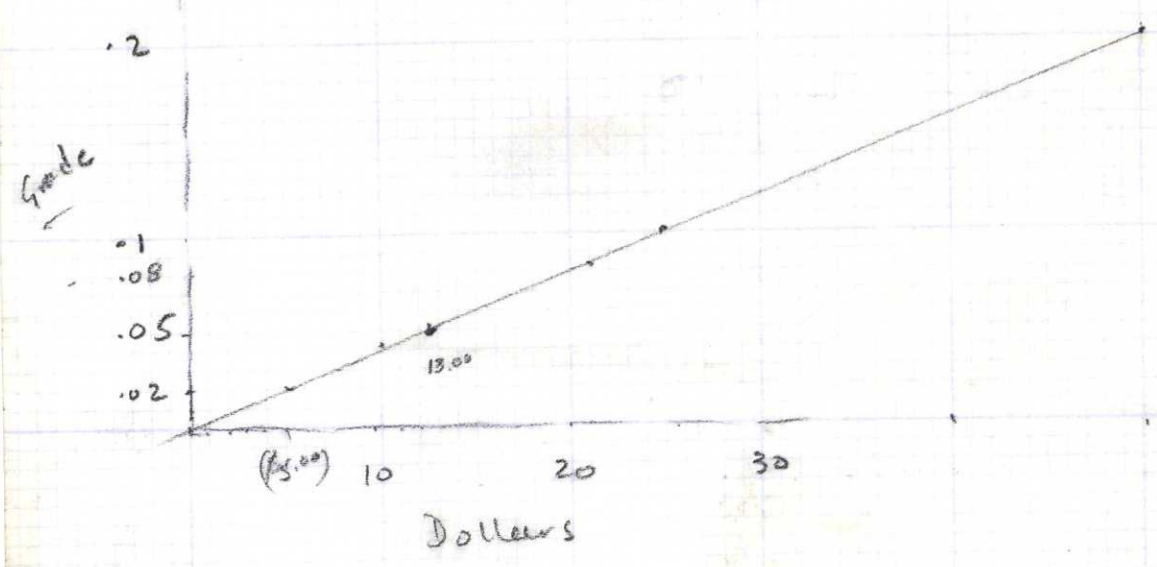
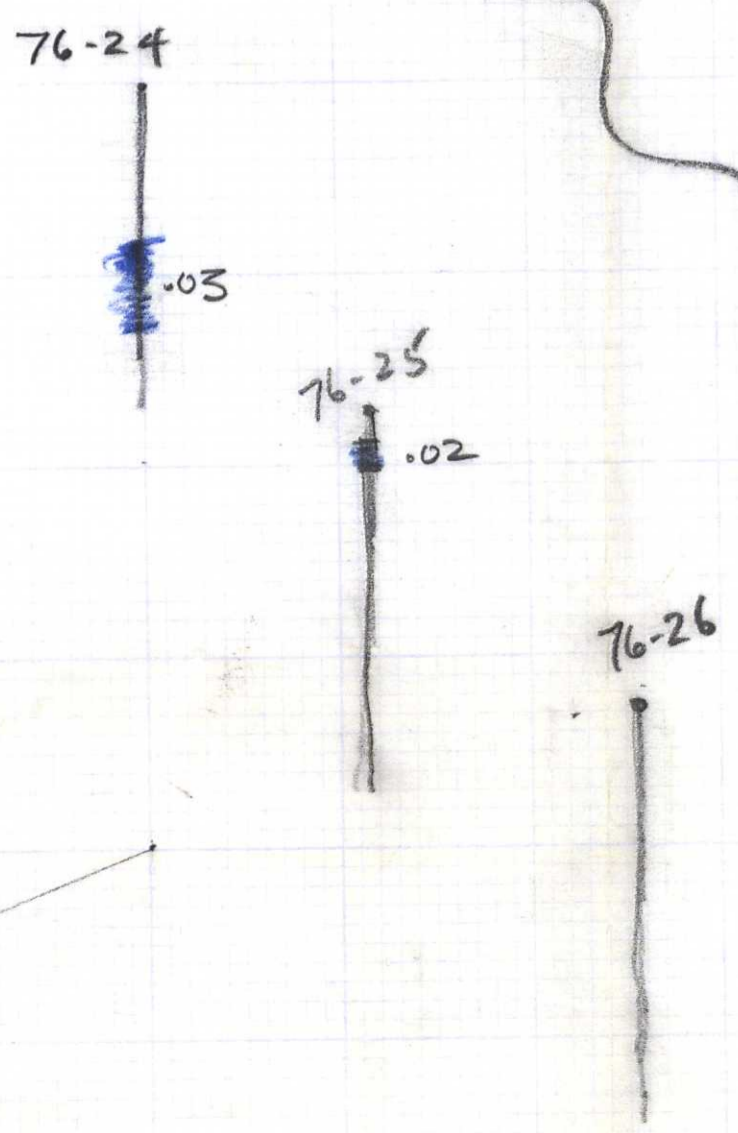
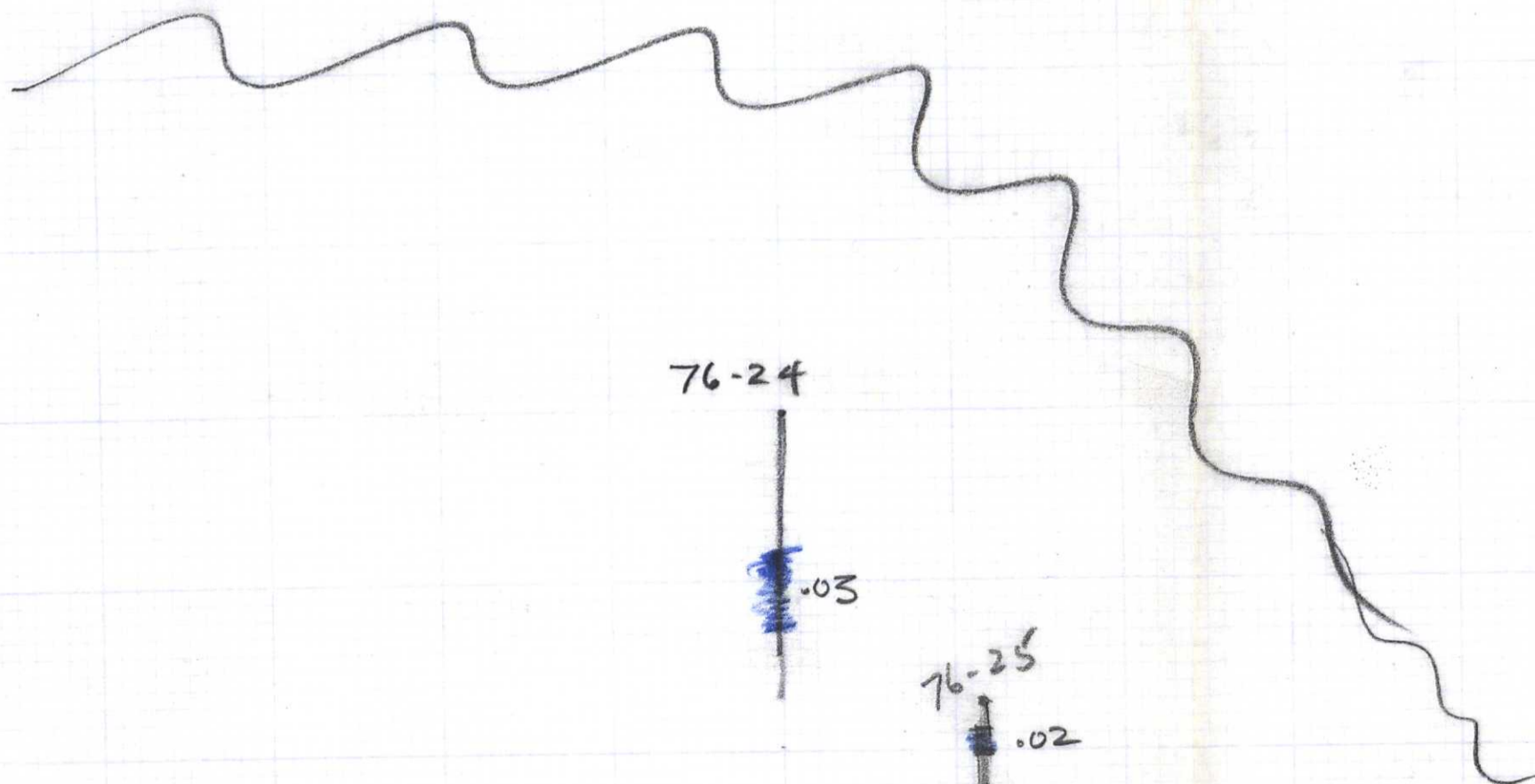
x U-2



180x100
1300 t.v.f.
to



Scale 1" = 25'



30
20
50

0 1 2 inches
0 1 2 3 4 5 centimetres

This reference scale bar has been added to the original image. It will scale at the same rate as the image, therefore it can be used as a reference for the original size.