

FELSIC  
VOLCANICS

MUDDY TUFF  
(sericite alteration)

GRANITE

INTERMEDIATE  
VOLCANICS

150 to 200 ppb Au  
over 5m thickness

SHOWING - (2m thick)  
0.08ppb Au  
24.0g/t Ag  
4.15% Pb  
5.87% Zn

MUDDY TUFF  
(sericite alteration)

INTERCALATED  
VOLCANICS  
AND SEDIMENTS

FLOAT  
0.02ppb Au  
+1% Zn  
+1% Pb

SHOWING - (0.5m thick)  
11.6% Zn  
7.4 g/t Ag

BOULDER  
6.1% Zn  
12.1g/t Au

INTERCALATED  
SEDIMENTS  
AND  
MUDDY TUFF

**LEGEND**

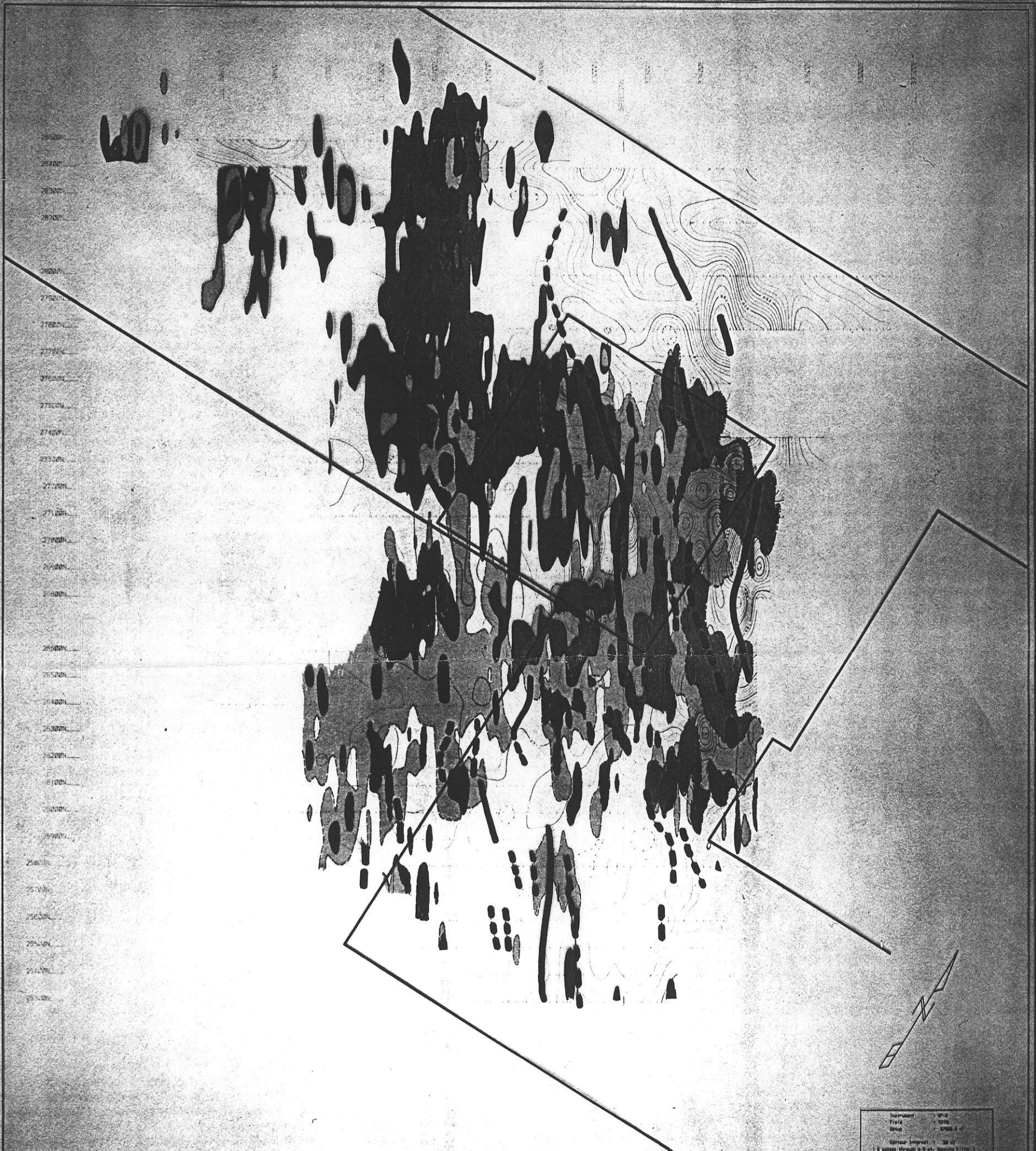
- MINERALIZATION
- REVERSE CIRCULATION DRILL HOLE
- DIAMOND DRILL HOLE
- TRENCH
- FAULT
- GEOLOGICAL BOUNDARY

SCALE





Metres 100 0 100 200 300 400 500

REVISED	<b>BIRK CREEK-SOUTH</b>	
	<b>GEOLOGY</b>	
FILE NO. 823855	DRAWN BY: S.D.	DATE: 2/19/78
DATE: 2/19/78	CHECKED BY: S.D.	DATE: 11/2/78
DRILL NO.	<b>NORANDA EXPLORATION</b>	
	6000 VANCOUVER	

823855



29500'  
29400'  
29300'  
29200'  
29100'  
29000'  
28900'  
28800'  
28700'  
28600'  
28500'  
28400'  
28300'  
28200'  
28100'  
28000'  
27900'  
27800'  
27700'  
27600'  
27500'  
27400'  
27300'  
27200'  
27100'  
27000'  
26900'  
26800'  
26700'  
26600'  
26500'  
26400'  
26300'  
26200'  
26100'  
26000'  
25900'  
25800'  
25700'  
25600'  
25500'  
25400'  
25300'  
25200'  
25100'  
25000'

- LEGEND**
-  Lead (Pb) > 100 ppm
  -  Zinc (Zn) > 400 ppm
  -  Silver (Ag) > 0.0 ppm
  -  Copper (Cu) > 150 ppm

Instrument: WP-2  
Field: 7-70-68  
Grid: 100' x 100'  
Contour Interval: 20 ft  
1 ft scales through 0.5 ft. Spacing 2 ft. (1 ft scales through 0.5 ft. Spacing 2 ft.)  
Landscape: 1:100

**BIRK CREEK (SOUTH GRID)**  
**COMPILATION**  
SCALE = 1" = 500' DATE: 1/11/84  
SURVEY BY: TL, HTS  
FILE: W010-P, SWT  
NORANDA EXPLORATION