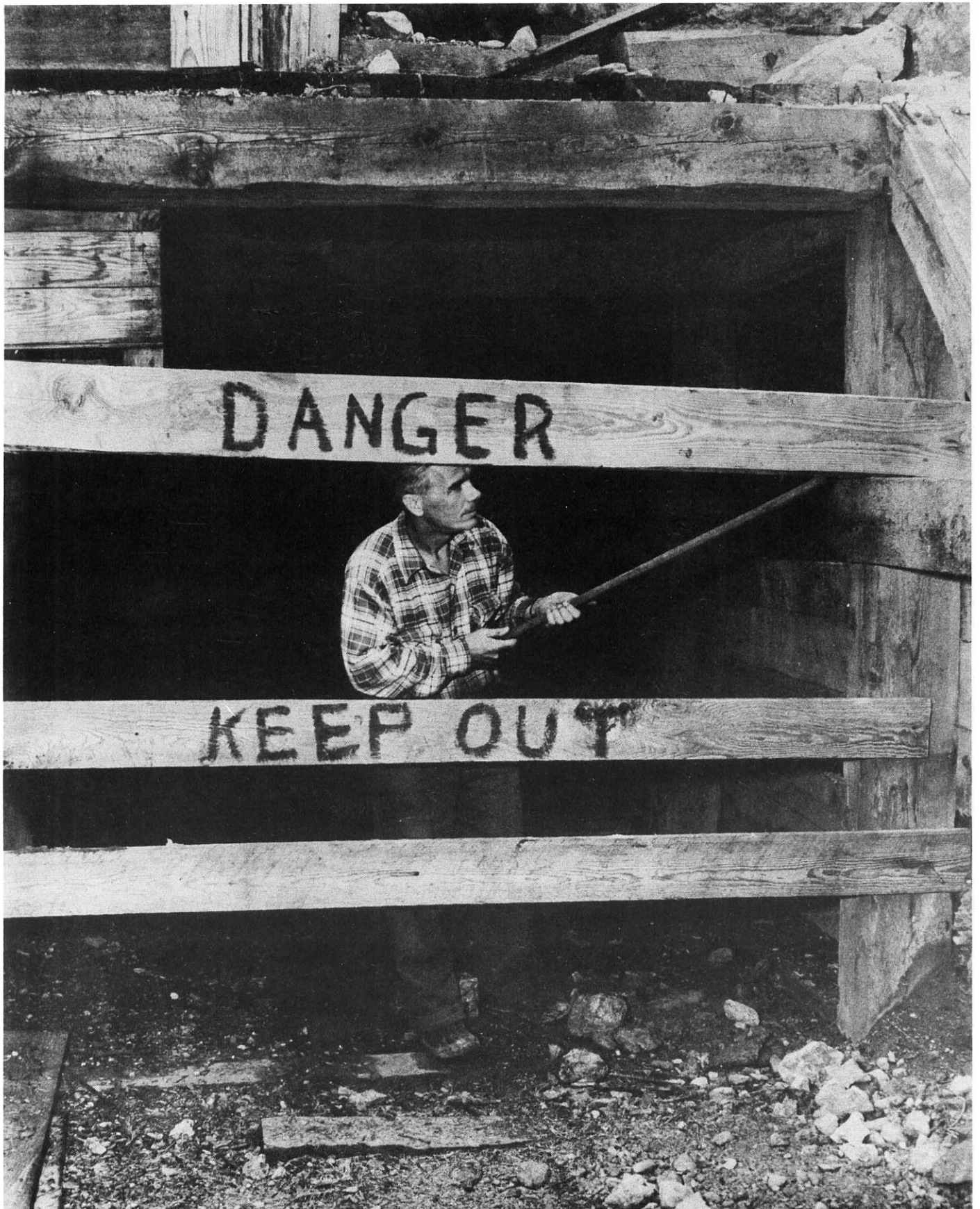


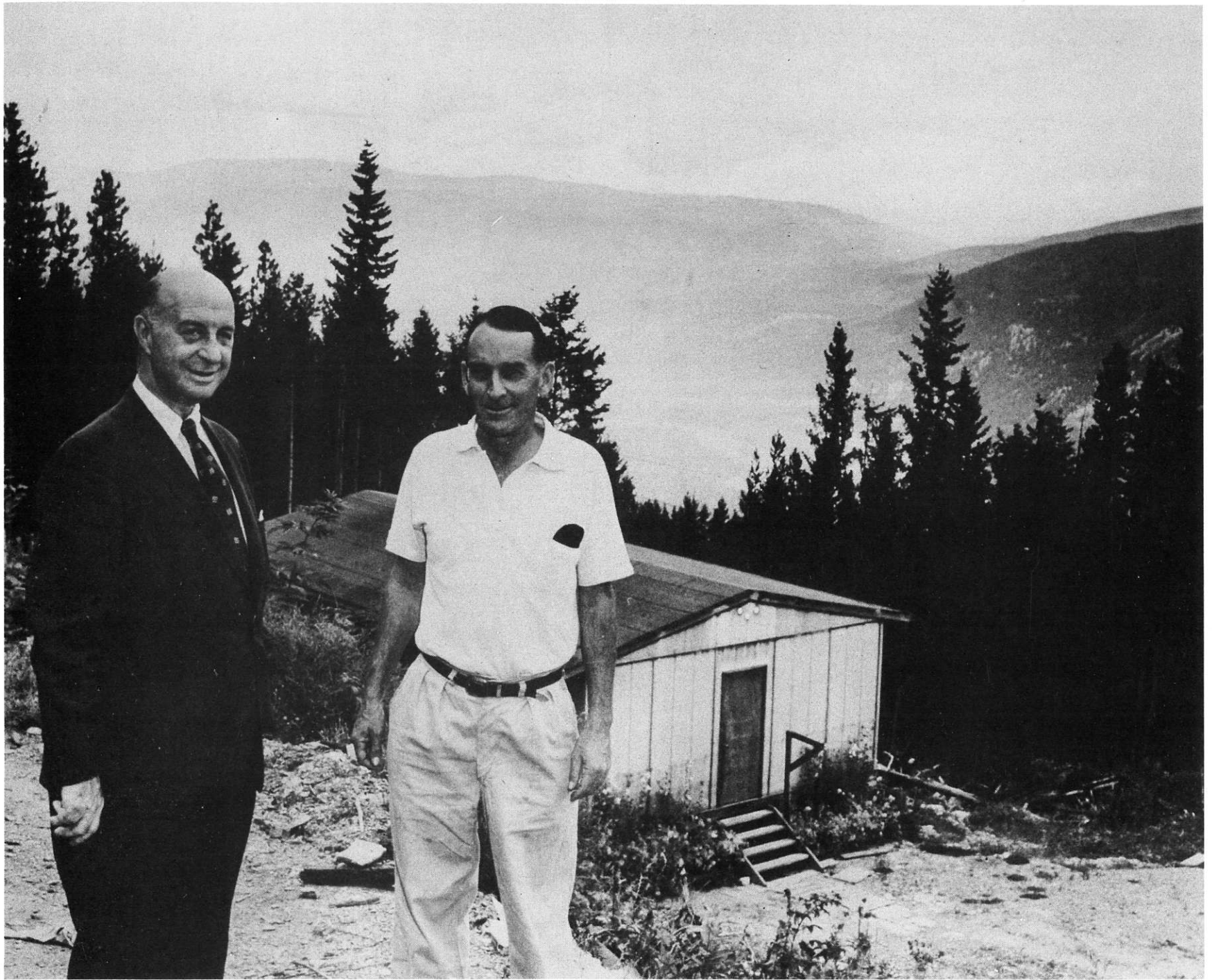


Rexspar
Mine
8 photos
823806

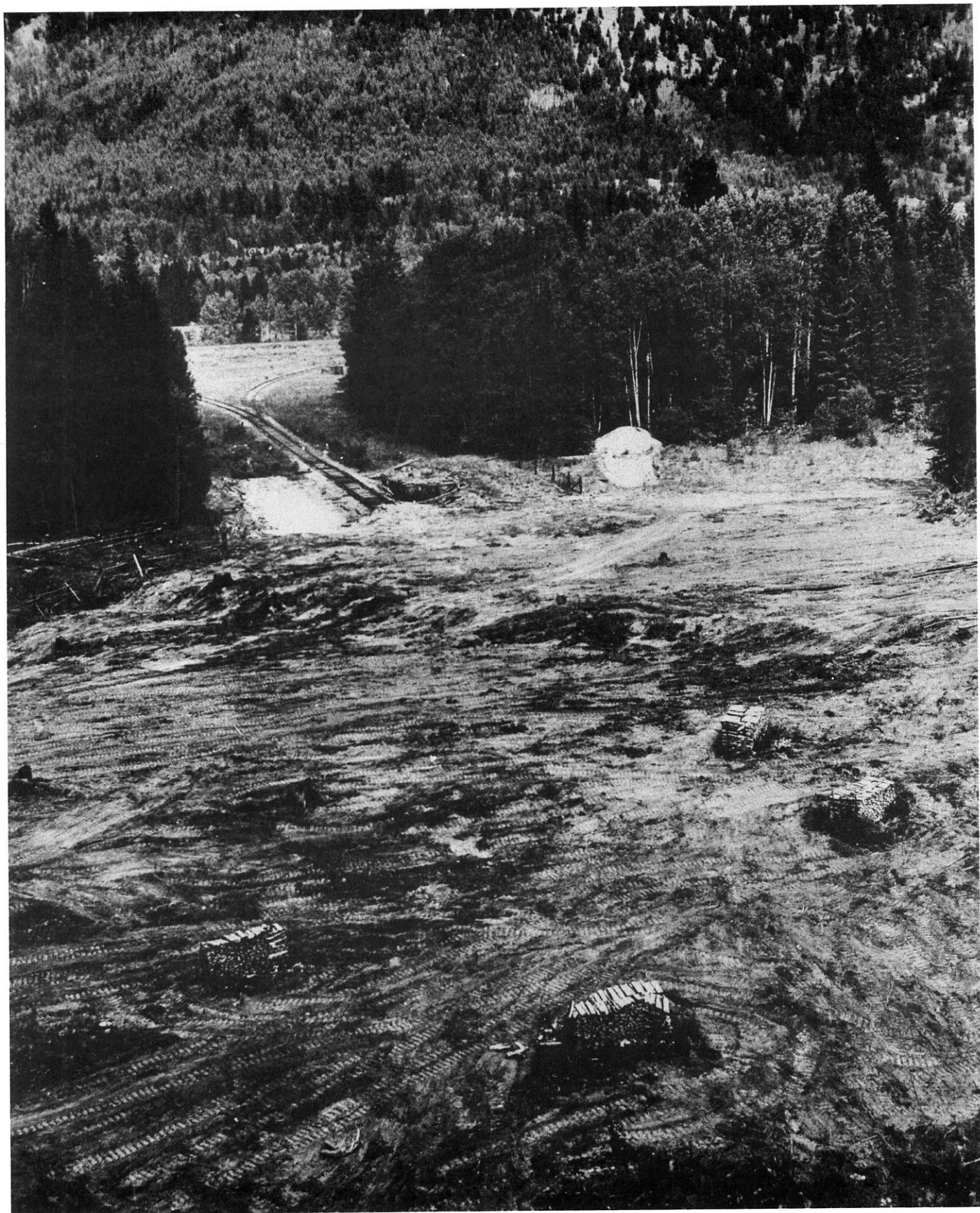
Adit at Rexspar Mine.



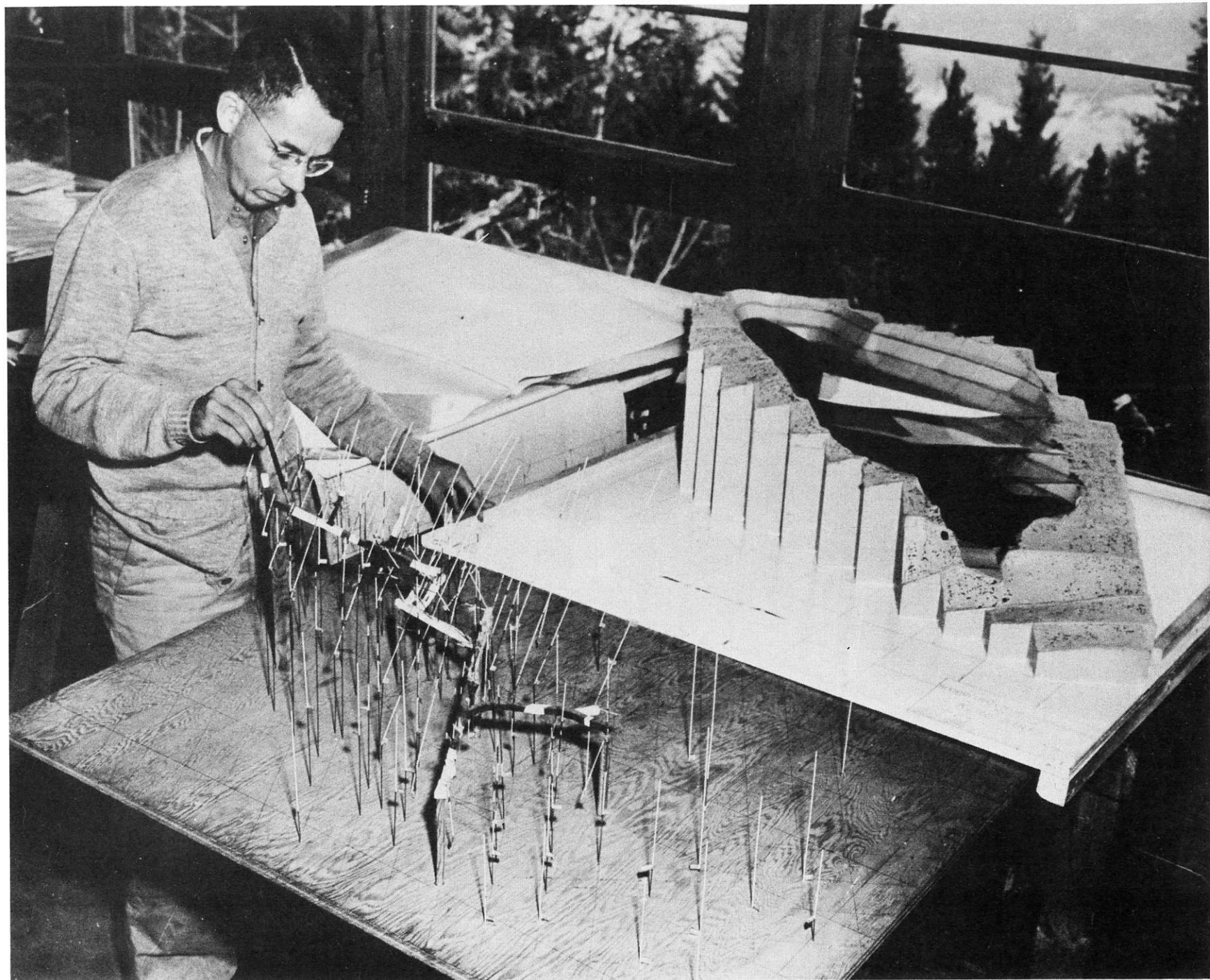
Mr. F. Richards, Mine Engineer at Rexspar Mine



Dr. Philip Joseph, President of Rexspar and Mine Manager J. W. Scott, Engineer.



Canadian National Railway Spur up to Rexspar plant Site.



D. H. James, Engineer examining scale model of diamond drilling done at Rexspar and also scale model of open pit mine operation at Rexspar.



Bunk Houses for Mine Crew at Rexspar Mine.



View of North Thompson Valley, B.C. from Rexspar Mine.



Rexspar plant and Mill Site cleared.