

# Questor Surveys Limited

6380 Viscount Road, Mississauga, Ontario, Canada L4V 1H3 Tel: (416) 676-9880 Telex: 06-983611

ReaGold Option

823735

MAY 24 1984

May 18, 1984.

*File 82M4W.  
QUESTOR  
SURVEYS.*

Mr. Dave Watkins,  
Corporation Falconbridge Copper,  
6415 64th Street,  
DELTA, British Columbia  
V4K 3E2

Dear Sir:

This letter is a follow-up to my letter of March 26, 1984 indicating Questor's intention to fly a large tract of land in the Adams Lake area of Southern British Columbia with the Helicopter INPUT E.M. system. I am pleased to say that we will be mobilizing to the area shortly and will be flying the areas as indicated on the enclosed topographic and claim maps. Lines will be flown with a 200 metre spacing with flight direction as indicated on the maps.

The results should be made available by mid July and will be in the form of an electromagnetic intercept map, magnetic contour map at 10 gamma intervals, both at a scale of 1:10,000 and colour Applicon maps at a scale of 1:50,000. Four copies of a brief interpretative report will also be included and is written in such manner to be accepted for assessment work.

The results will be sold on a nonexclusive basis. The rates, as set out in the March 26 letter are:

50 km. minimum	\$ 155/km.
51 km. to 150 km.	\$ 145/km.
151 km. to 250 km.	\$ 135/km.
251 km. plus	\$ 125/km.

The above rates cover the outlines indicated on the maps and they will increase by 25% to cover costs for modifying survey operations or for any adjacent survey work.

We look forward to your response and participation in this project. If you have any questions, whatsoever, please do not hesitate to call me.

Yours truly,

QUESTOR SURVEYS LIMITED,

*R.J. deCarle*

R.J. deCarle,  
Chief Geophysicist.

RJdC/djd

Encl.



Please  
insert

Map(s) # 001

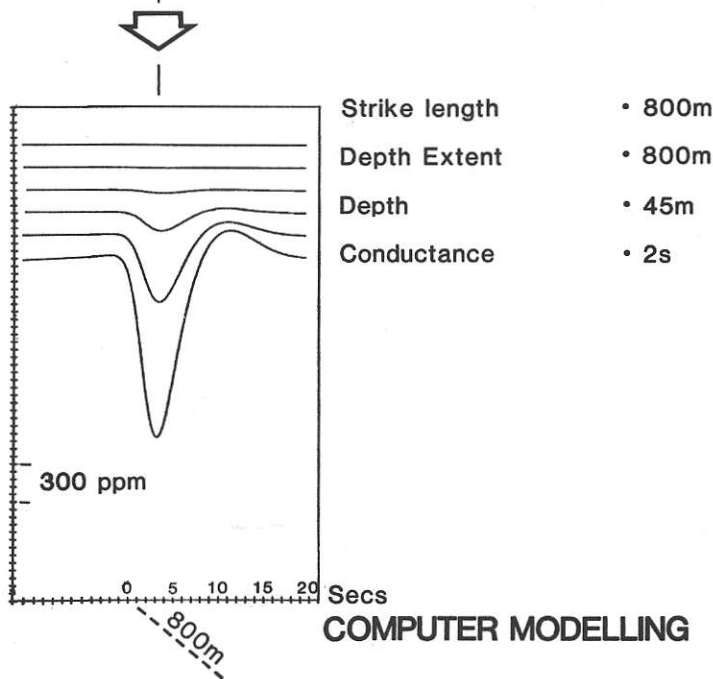
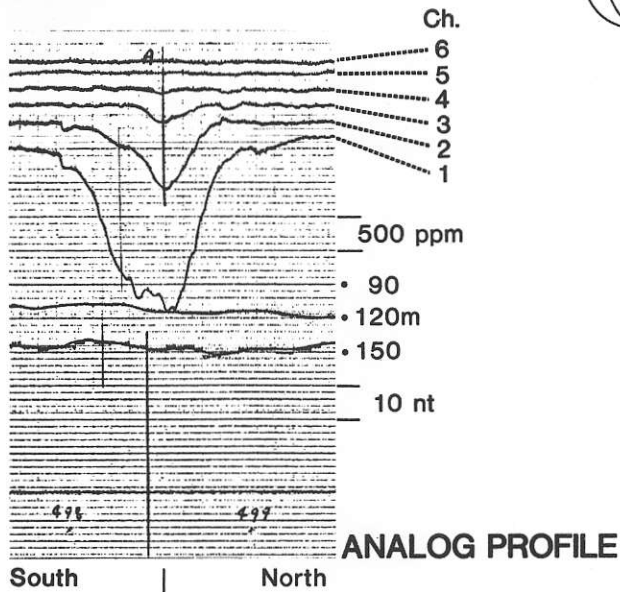




# Questor Surveys Limited

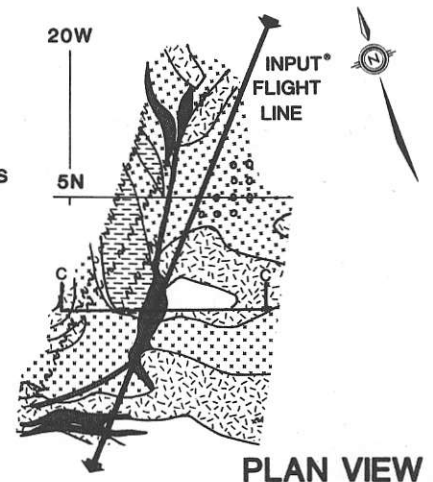
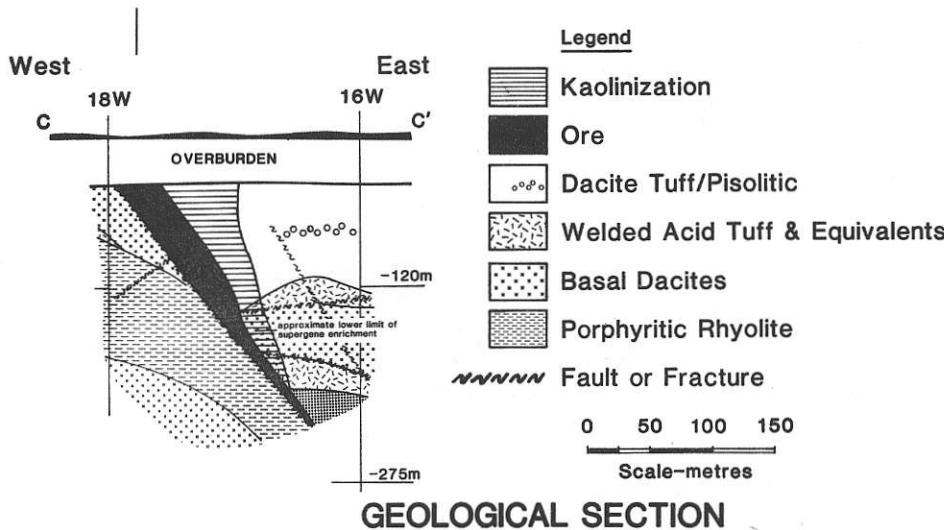
A Fixed Wing MK VI INPUT<sup>®</sup>  
Discovery  
#FW-1

**SELBAIE Zn•Cu•Ag**  
Selco Inc.



The 'Open B' zone of the Selbaie Zn-Cu-Ag deposits is formed by a lens of irregular and discontinuous chalcopyrite veinlets. The veinlets are a part of a north north-east striking fault system normal to the basal dacites.

Having a strike length of 500 metres and a width of up to 30 metres, the deposit contains 3.07 million tonnes averaging 4.49% Cu, 0.08% Zn, 39.4grams per tonne Ag and 1.2 grams per tonne Au.





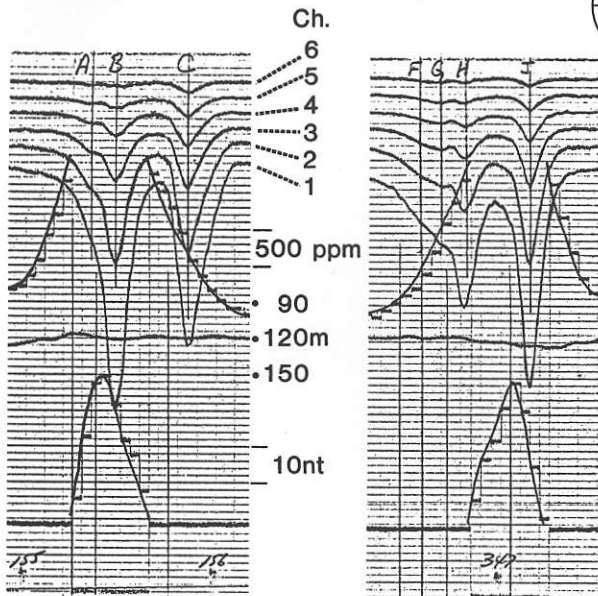
# Questor Surveys Limited

A Fixed Wing MK VI INPUT®  
Discovery  
#FW-2

## DETOUR LAKE GOLD DEPOSIT Amoco

The Detour Lake Mine was discovered by Amoco Canada Petroleum Co. and is now jointly operated with Campbell Red Lake Mines. GOLD is concentrated in a cherty tuff and quartz vein horizon which contain accessory sulphide minerals, 10-15% Po-Py and up to 1% Cpy. These sulphides are the cause of the conductor.

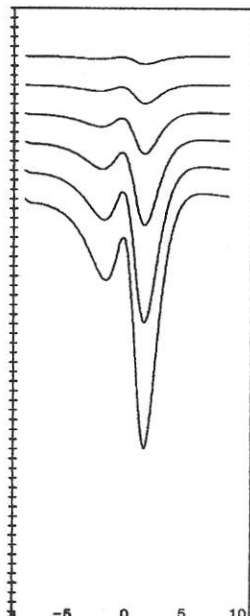
Significant economic gold concentrations are also located within adjacent basalts and talc carbonate rocks. With reserves of 30.6 million tons grading 0.113 oz. per ton Au with Ag and Cu by-products, The mine will be Canada's largest tonnage gold producer.



ANALOG  
PROFILES

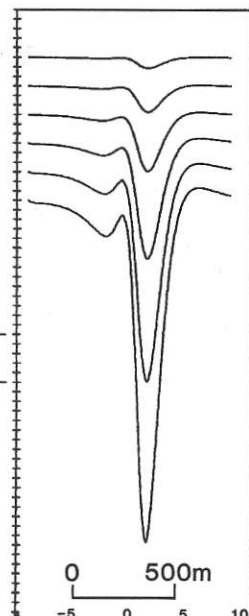


Flight direction



300 ppm

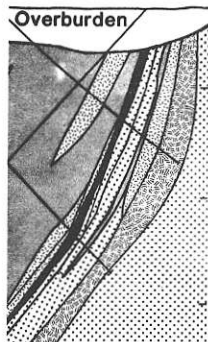
Secs.



COMPUTER  
MODELLING

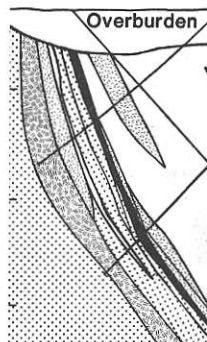
Strike Length • 600m  
Depth Extent • 300m  
Depth • 10m  
Conductance • 13s

North South








0 25 50  
Scale-metres

South North



GEOLOGICAL  
SECTION

Legend

-  Basalts
-  Intermediate tuff
-  Chert & Mineralized tuff
-  Chlorite tuffs
-  Felsic fragmentals, Tuffs



# Questor Surveys Limited

A Fixed Wing MK VI INPUT®  
Discovery  
# FW-3

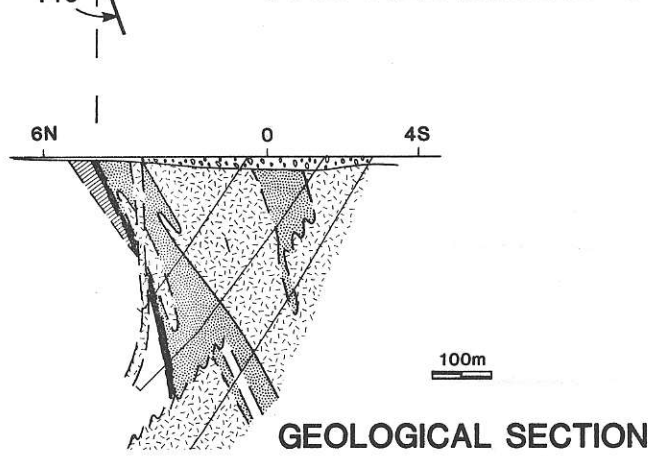
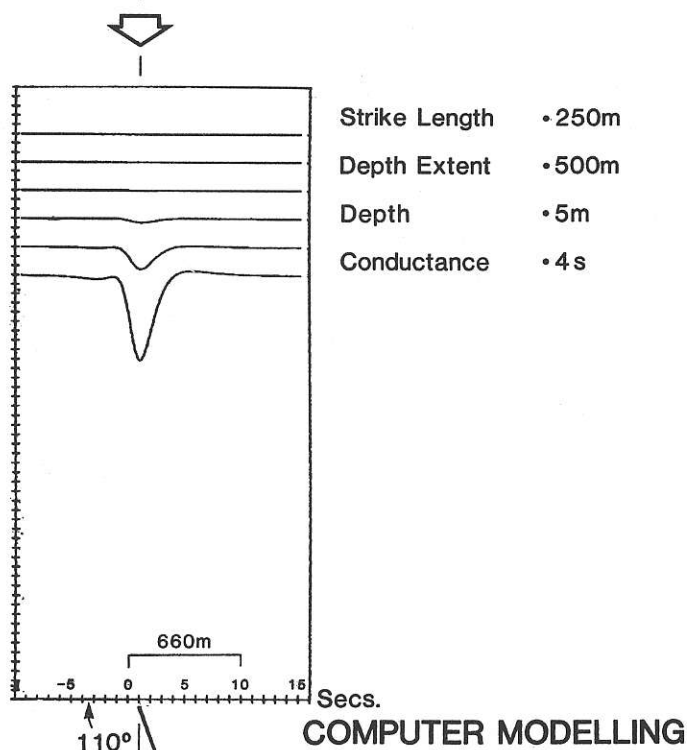
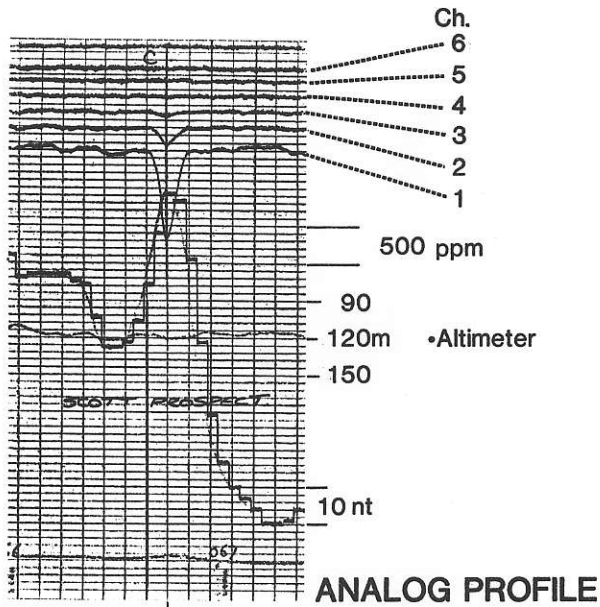
## SCOTT DEPOSIT

Selco · Rio Tinto · Ducanex

The Scott zinc-copper deposit is located 20 kilometres west of Chibougamau, Quebec, the result of a successful joint venture between Selco, Rio Tinto and Ducanex. Massive sulphides occur at the contact of acidic and intermediate volcanics, spatially related to a quartz porphyry. The deposit has geological reserves of 680,000 tonnes grading 0.55% Cu, 6.9% Zn and 13.3g/tonne Ag.

The host lithology forms part of the Waconichi Formation. Eastward and on the opposite limb of an anticline, the Lemoine Deposit is located in a similar geological environment.

The INPUT® response obtained over the body is an isolated intercept along a resistive horizon. The magnetic anomaly visible on the profile has a geological source located 100 metres south of the massive sulphide zone.

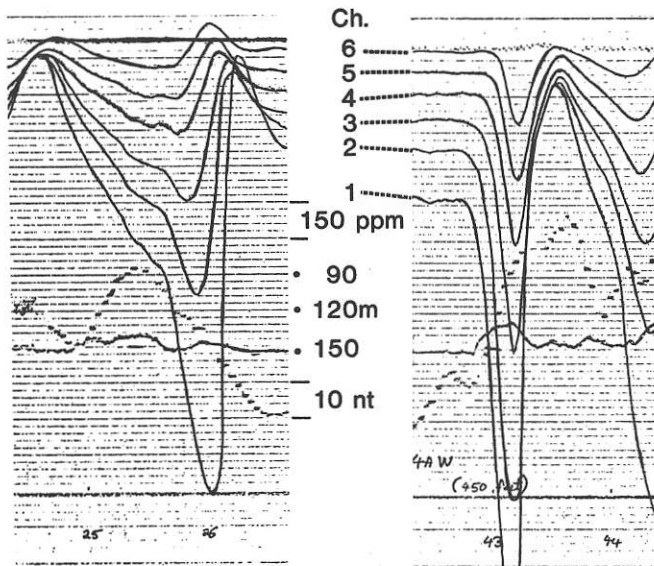


- Legend**
- Chibougamau Pluton
    - Mixed Border Phases
  - Waconichi Formation
    - Acid Volcanic
    - Intermediate Volcanic
    - Quartz Porphyry
    - Massive Sulphide



# Questor Surveys Limited

Horizontal Axis  
Receiver Coil

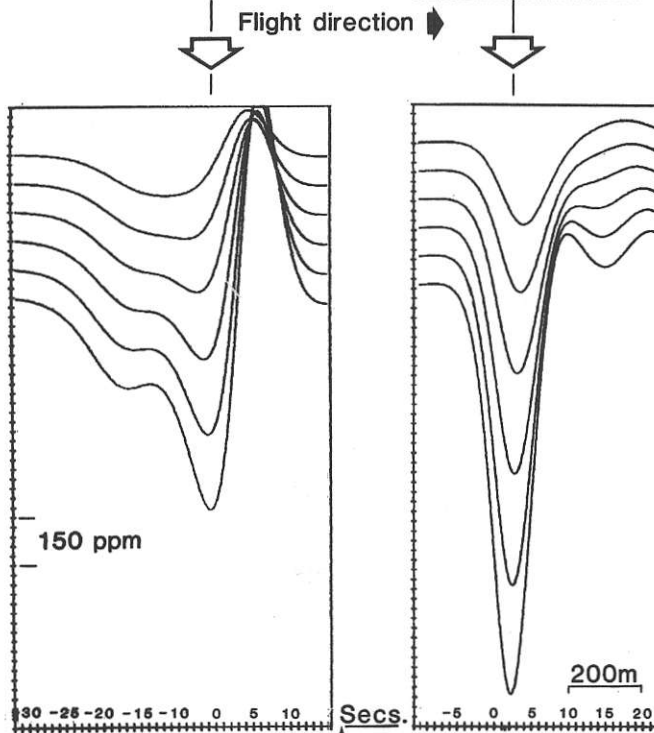


**ANALOG  
PROFILE**

**A Helicopter MK VI INPUT<sup>®</sup>  
Case History  
#H-1**

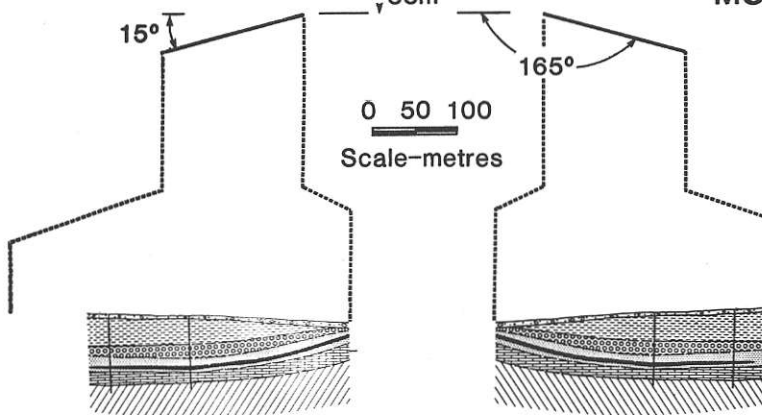
## **GOLDSTREAM DEPOSIT Noranda Exploration**

The Goldstream deposit is a stratabound Cu • Zn • Ag massive sulphide layer in Proterozoic age metasedimentary rocks. The mine is located in the Selkirk mountains, 90 kilometres north of Revelstoke, B.C. Drilling by Noranda Exploration Company has outlined reserves of 3.18 million tonnes grading 4.5 per cent copper, 3.1 per cent zinc and 20 grams per tonne silver.



Strike Length • 800m  
Depth Extent • 400m  
Depth • 55m  
Conductance • 40s

**COMPUTER  
MODELLING**



**GEOLOGICAL  
SECTION**

**Legend**

- Overburden
- Calcareous phyllite
- Garnet phyllite
- Sericite-quartz phyllite
- Massive sulphide
- Limestone
- Siliceous sericite-biotite-chlorite phyllite



# Questor Surveys Limited

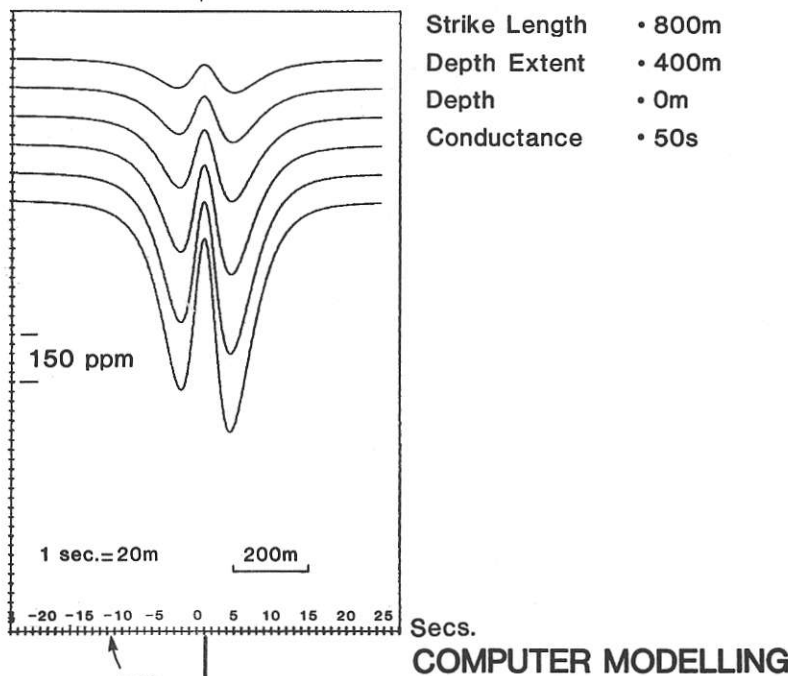
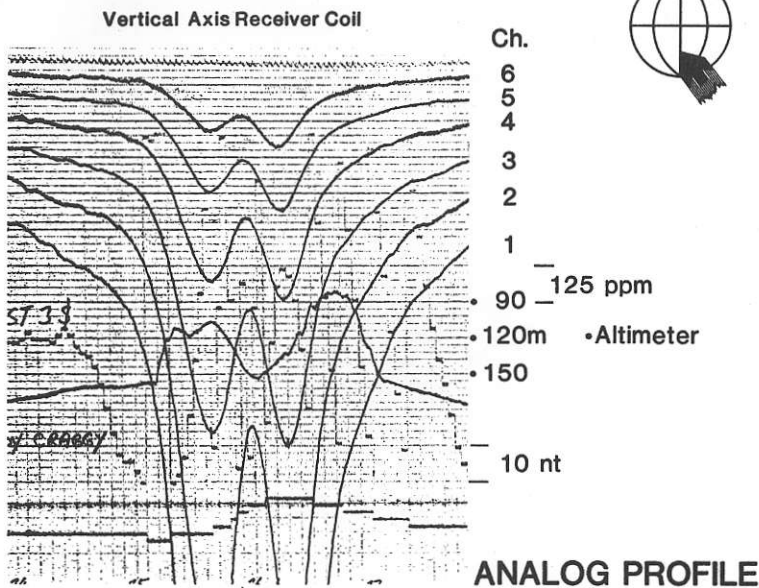
A Helicopter MK VI INPUT®

Case History

#H-2

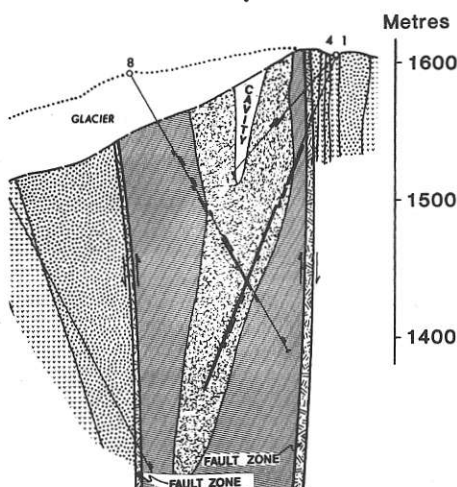
## WINDY CRAGGY DEPOSIT

Geddes Resources



The Windy Craggy deposit is a tabular, steeply dipping pyrrhotite, chalcopyrite and pyrite massive sulphide body. Up to 300 million tonnes averaging 1.52 per cent copper and 0.08 per cent cobalt have been outlined in a stratiform exhalite environment. The body has a strike length of 1000 metres and a thickness of up to 100 metres.

North-east  
90°  
South-west



### Legend

- |             |  |                                     |
|-------------|--|-------------------------------------|
| Hangingwall |  | Siltstone, Argillite<br>Tuff, Flows |
| Ore Zone    |  | Massive Sulphides                   |
| Footwall    |  | Disseminated Sulphides<br>in Basalt |

### GEOLOGICAL SECTION



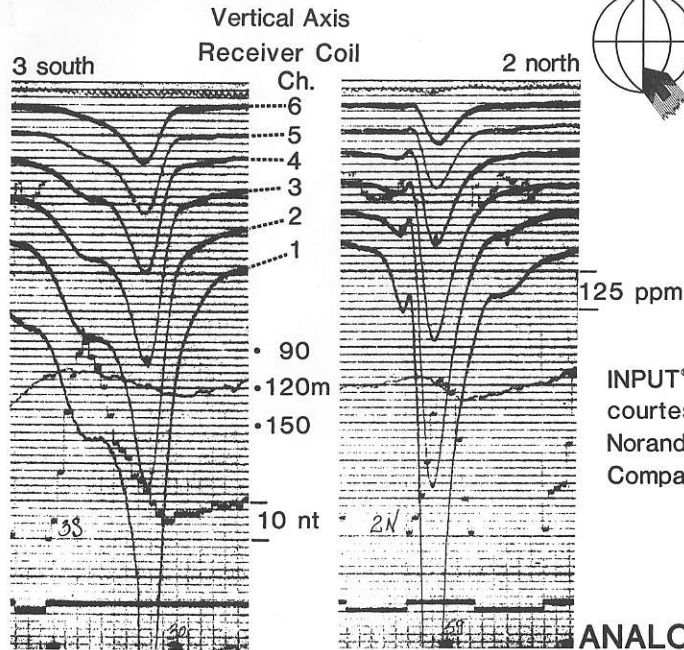
# Questor Surveys Limited

A Helicopter MK VI INPUT®  
Case History  
#H-3

## KUTCHO DEPOSIT Sumac Mines Ltd.

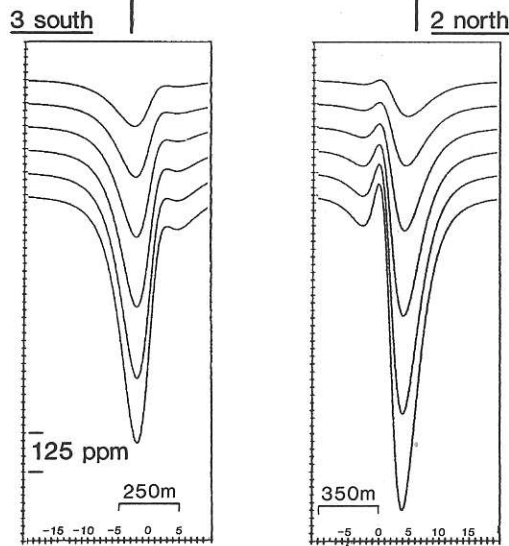
The Kutcho Creek massive sulphide deposit is located within Proterozoic metavolcanics in the Cassiar Mountains of British Columbia. Although stratiform, the deposit is not stratabound, as the mineralization dips 45 degrees north, crosscutting host rock bedding planes at 70 degrees north. The portion of the Kutcho Creek deposit owned by Sumac Mines Ltd. has reserves of 11 million tonnes grading 1.68 per cent Cu, 2.14 per cent Zn, 25.23 grams Ag per tonne and 0.26 grams Au per tonne.

The conductive portion of the deposit consists of 2 zones and has a total width of about 25 metres. The 'C' zone of massive pyrite does not contribute to the INPUT response.



INPUT® Data  
courtesy of  
Noranda Exploration  
Company Limited

### ANALOG PROFILE

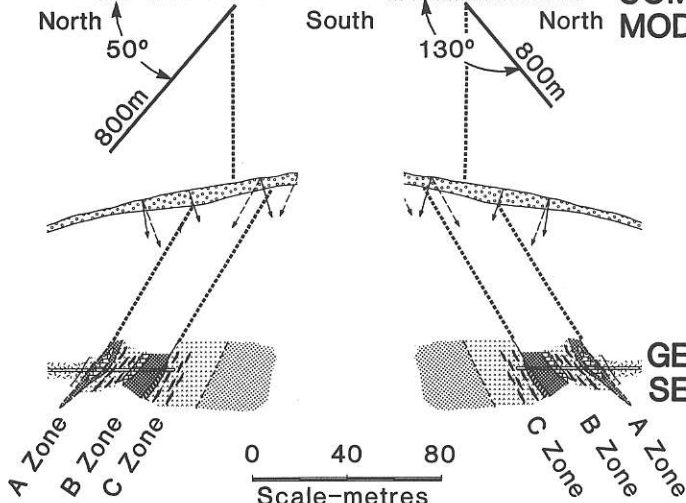


Strike length • 800m  
Depth Extent • 800m

Line 3 south  
Depth • 15m  
Conductance • 35s

Line 2 north  
INPUT® profile  
200m west of  
Geological section  
Depth • 25m  
Conductance • 22s

### COMPUTER MODELLING



### GEOLOGICAL SECTION

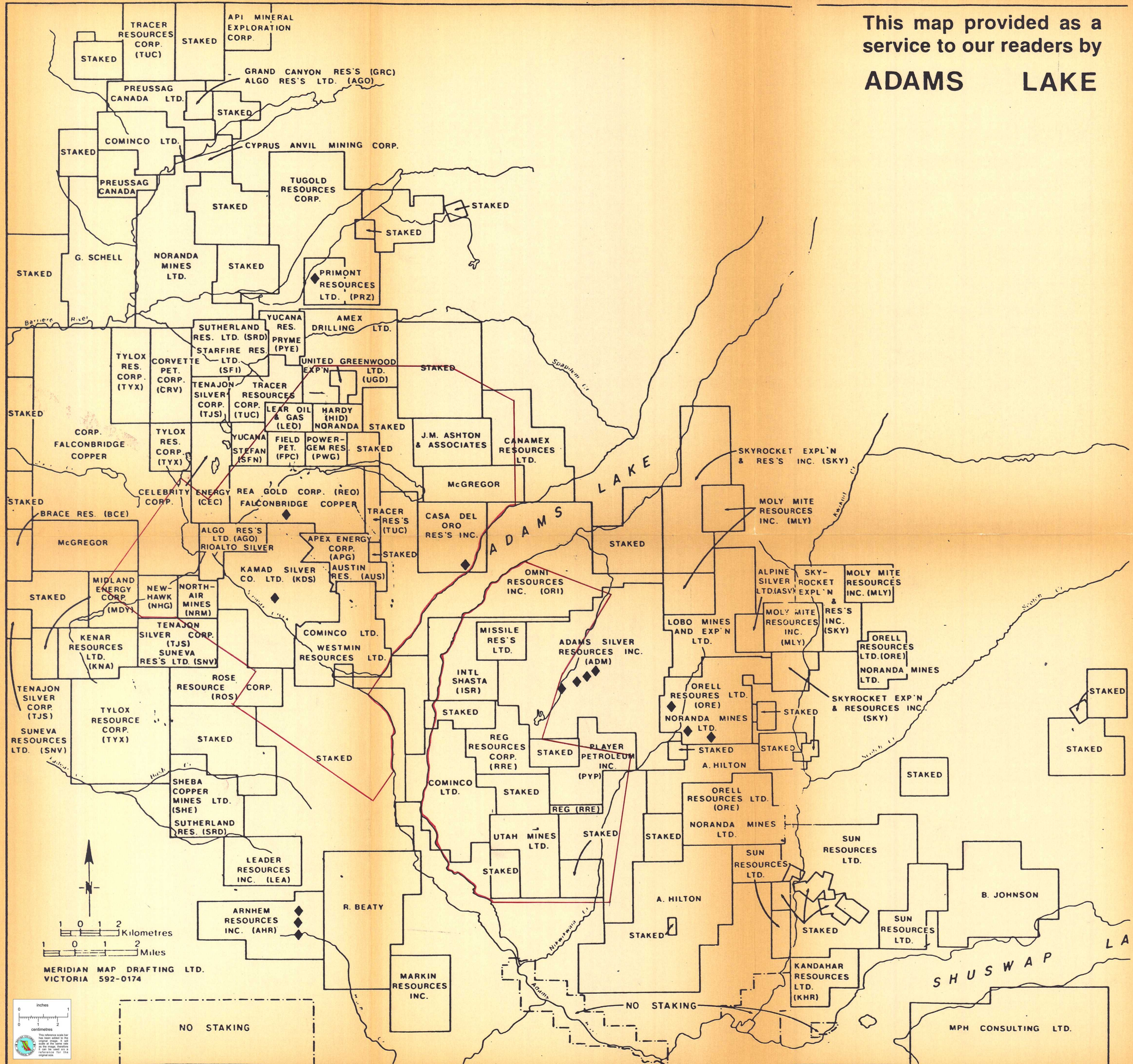
#### Legend

- Overburden
- Amphibolitic schist
- Green schist
- Quartz eye schist
- Sericite quartz schist
- Massive ore
- Semi-massive ore
- Banded ore
- Stringer/network ore (in Dolomitic limestone)
- Pale green schist
- Drill hole



This map provided as a service to our readers by

# ADAMS LAKE



TRACER RESOURCES CORP. (TUC)  
API MINERAL EXPLORATION CORP.  
GRAND CANYON RES'S (GRC)  
ALGO RES'S LTD. (AGO)

PREUSSAG CANADA LTD.  
COMINCO LTD.  
CYPRUS ANVIL MINING CORP.  
TUGOLD RESOURCES CORP.

G. SCHELL  
NORANDA MINES LTD.  
PRIMONT RESOURCES LTD. (PRZ)

TYLOX RES. CORP. (TYX)  
CORVETTE PET. CORP. (CRV)  
TENAJON SILVER CORP. (TJS)  
TRACER RESOURCES CORP. (TUC)

TYLOX RES. CORP. (TYX)  
YUCAMA STEFAN (SFN)  
CELEBRITY ENERGY CORP. (CEC)  
REAR GOLD CORP. (REO)

BRACE RES. (BCE)  
McGREGOR  
ALGO RES'S LTD. (AGO)  
RIOALTO SILVER

MIDLAND ENERGY CORP. (MDY)  
NEW-HAWK (NHG)  
NORTH-AIR MINES (NRM)  
TENAJON SILVER CORP. (TJS)  
SUNEVA RES'S LTD. (SNV)

TENAJON SILVER CORP. (TJS)  
SUNEVA RESOURCES LTD. (SNV)  
TYLOX RESOURCE CORP. (TYX)  
ROSE RESOURCE CORP. (ROS)

SHEBA COPPER MINES LTD. (SHE)  
SUTHERLAND RES. (SRD)  
LEADER RESOURCES INC. (LEA)

ARNHEM RESOURCES INC. (AHR)  
R. BEATY  
MARKIN RESOURCES INC.

YUCANA RES.  
PRYME (PYE)  
STARFIRE RES. LTD. (SFI)  
UNITED GREENWOOD LTD. (UGD)

LEARN OIL & GAS (LED)  
HARDY (HD)  
NORANDA  
FIELD PET. (FPC)  
POWER-GEM RES. (PWG)

REAR GOLD CORP. (REO)  
FALCONBRIDGE COPPER  
TRACER RES'S (TUC)  
CASA DEL ORO RES'S INC.

KAMAD SILVER CO. LTD. (KDS)  
AUSTIN RES. (AUS)  
COMINCO LTD.  
WESTMIN RESOURCES LTD.

INTL SHASTA (ISR)  
MISSILE RES'S LTD.  
ADAMS SILVER RESOURCES INC. (ADM)

REG RESOURCES CORP. (RRE)  
COMINCO LTD.  
UTAH MINES LTD.

MARKIN RESOURCES INC.

AMEX DRILLING LTD.  
J.M. ASHTON & ASSOCIATES  
CANAMEX RESOURCES LTD.

McGREGOR  
CASA DEL ORO RES'S INC.

OMNI RESOURCES INC. (ORI)

LOBO MINES AND EXP'N LTD.  
ADAMS SILVER RESOURCES INC. (ADM)

REG RESOURCES CORP. (RRE)  
PLAYER PETROLEUM INC. (PYP)

UTAH MINES LTD.  
A. HILTON

NO STAKING

SKYROCKET EXPL'N & RES'S INC. (SKY)

MOLY MITE RESOURCES INC. (MLY)

ALPINE SILVER LTD. (ASV)  
SKYROCKET EXPL'N & RES'S INC. (SKY)

MOLY MITE RESOURCES INC. (MLY)  
NORANDA MINES LTD.

ORELL RESOURCES LTD. (ORE)  
NORANDA MINES LTD.

SUN RESOURCES LTD.

KANDAHAR RESOURCES LTD. (KHR)

SKYROCKET EXPL'N & RES'S INC. (SKY)

MOLY MITE RESOURCES INC. (MLY)

ALPINE SILVER LTD. (ASV)  
SKYROCKET EXPL'N & RES'S INC. (SKY)

MOLY MITE RESOURCES INC. (MLY)  
NORANDA MINES LTD.

ORELL RESOURCES LTD. (ORE)  
NORANDA MINES LTD.

SUN RESOURCES LTD.

MPH CONSULTING LTD.

0 1 2 Kilometres  
0 1 2 Miles

MERIDIAN MAP DRAFTING LTD.  
VICTORIA 592-0174

