

L113	10125"	BL 10150"	112+83"
L112	10125"	BL 10150"	111+80"
L111	10120"	BL 10150"	110+87"
L110	10142"	BL 10150"	109+75"
L109			
L108	10122"	BL 10150"	107+96"
L107			
L106	10134"	BL 10150"	105+95"
L105	10127"	BL 10150"	104+97"
L104	10147"	BL 10150"	104+124"
L103	10146"	BL 10150"	103+80"
L102	10151"	BL 10150"	101+95"
L101	10145"	BL 10150"	100+75"

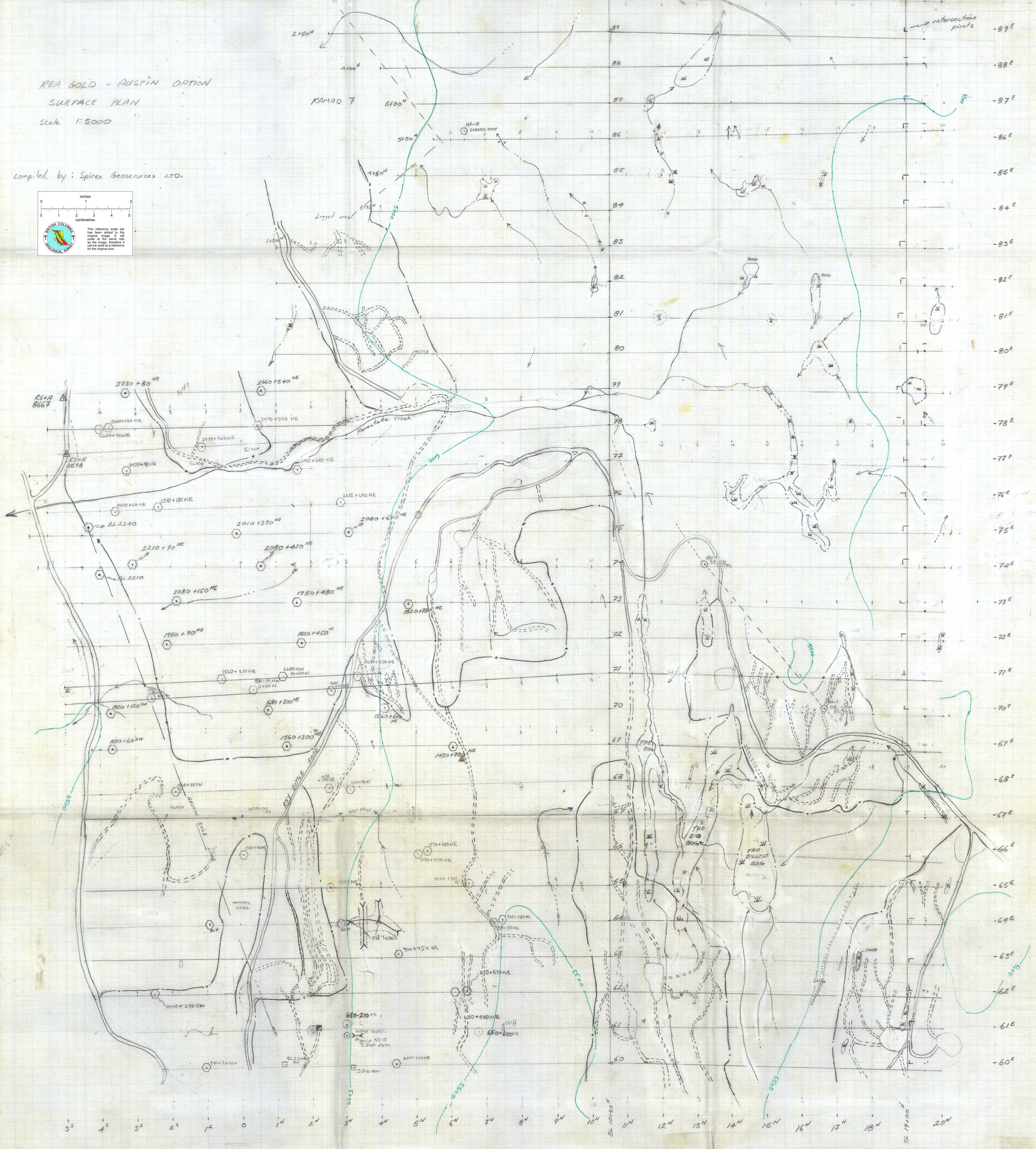
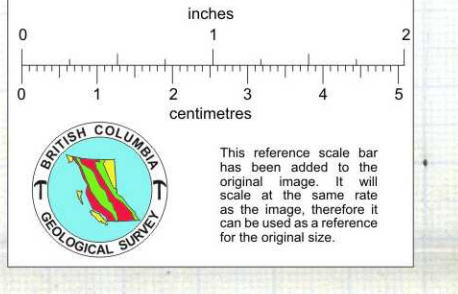
/ creek
 --- old logging road
 0 Road

TL line and grid line intersection points

L100E	19150"	TL 19150"	100E
L99E	19153"	TL 19150"	99+07"
L98E	19142"	TL 19150"	97+85"
L97E	19146"	TL 19150"	97+106"
L96E	19126"	TL 19150"	95+58"
L95E	19151"	TL 19150"	94+97"
L94E	19115"	TL 19150"	93+67"
L93E	19103"	TL 19150"	92+58"
L92E	18193"	TL 19150"	91+26"
L91E	19106"	TL 19150"	90+70"
L90E	19102"	TL 19150"	89+80"

REA GOLD - AUSTIN OPTION
 SURFACE PLAN
 SCALE 1:5000

compiled by: Spirex Geoservices LTD.



CORPORATION FALCONBRIDGE COPPER	
Delta, British Columbia	
SURFACE PLAN	
REA GOLD OPTION	
Field work by: Spirex Geoservices LTD	Scale 1:5000
Date June 16 84	NFS: 823726