

From the desk of:  
Bill Sirola

Aug. 29/77

823706

Wane,

This preliminary  
Sketch looks interesting.  
We're picking up the  
fraction between Cr. 1 & Cr. 2  
& will try to get Ken  
to provide a free estimate  
on the thickness of the  
mucosa.

Zec

# K. L. Daughtry & Associates Ltd.

MINERAL EXPLORATION CONSULTANTS

BOX 795 • VERNON, BRITISH COLUMBIA V1T 6M7 • TELEPHONE 542-8960

August 25, 1977

W. M. Siroda  
Kerr Addison Mines Ltd  
Vancouver, BC.

RECEIVED

AUG 29 1977

KERR ADDISON MINES LTD.

PER.....

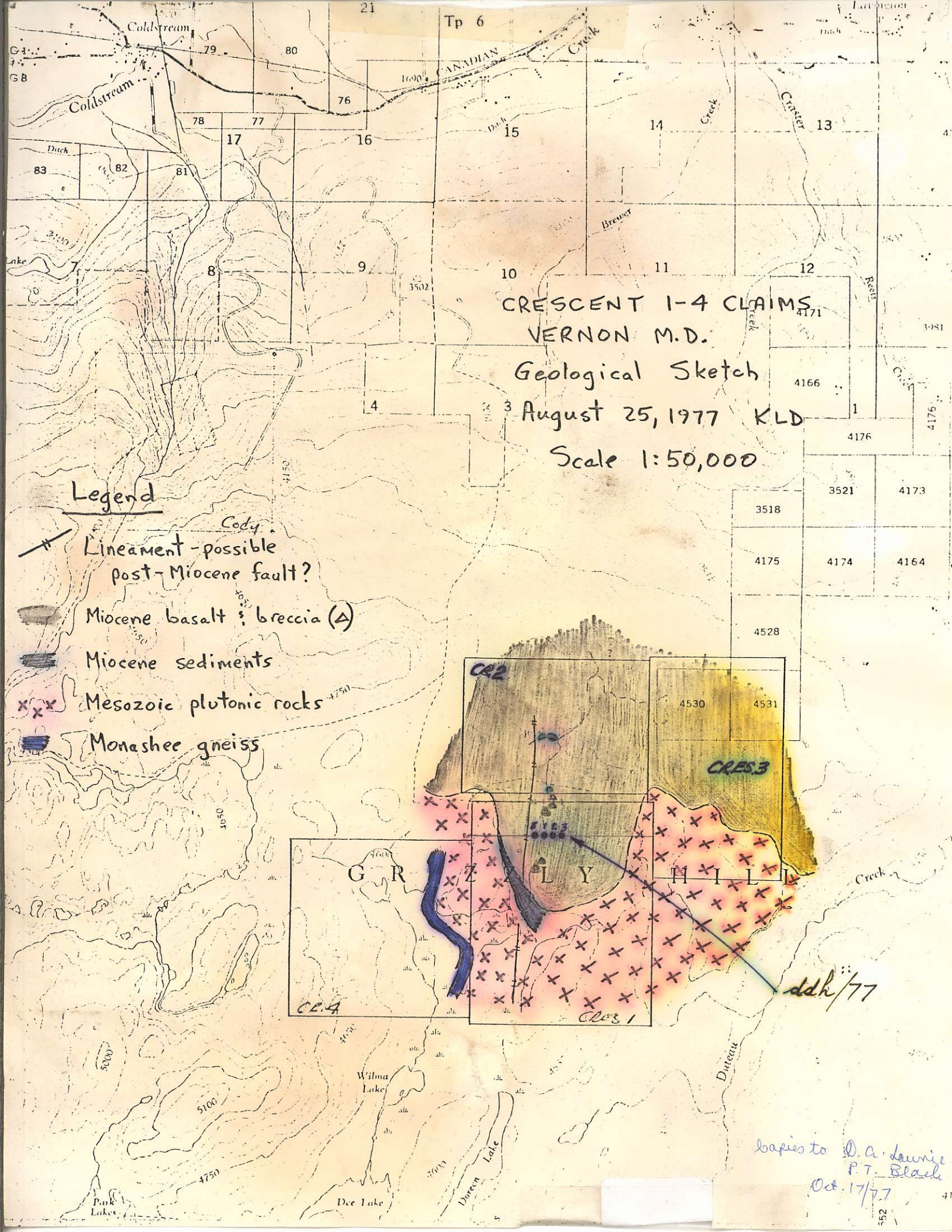
Dear Bill -

Enclosed is a sketch summarizing our interpretation of the geology on the CRESCENT 1-4 claims to date. A 1:5,000 map of the roadside geology will be put in the mail to you on Monday, August 28.

Please note the following points of interest:

- ① An apparently post-basalt lineament - possibly a fault -
- ② The sediments shown flanking the basalt lobe on the south are silts, sands and grits. The coarsest pebbles are definitely derived from basement rocks. The sediments are unconsolidated.
- ③ The other small exposures of sediment are tentatively placed between basalt layers.
- ④ The widespread occurrence of breccia may be related to a vent near the fault(?).

Regards.  
Ken.



Tp 6

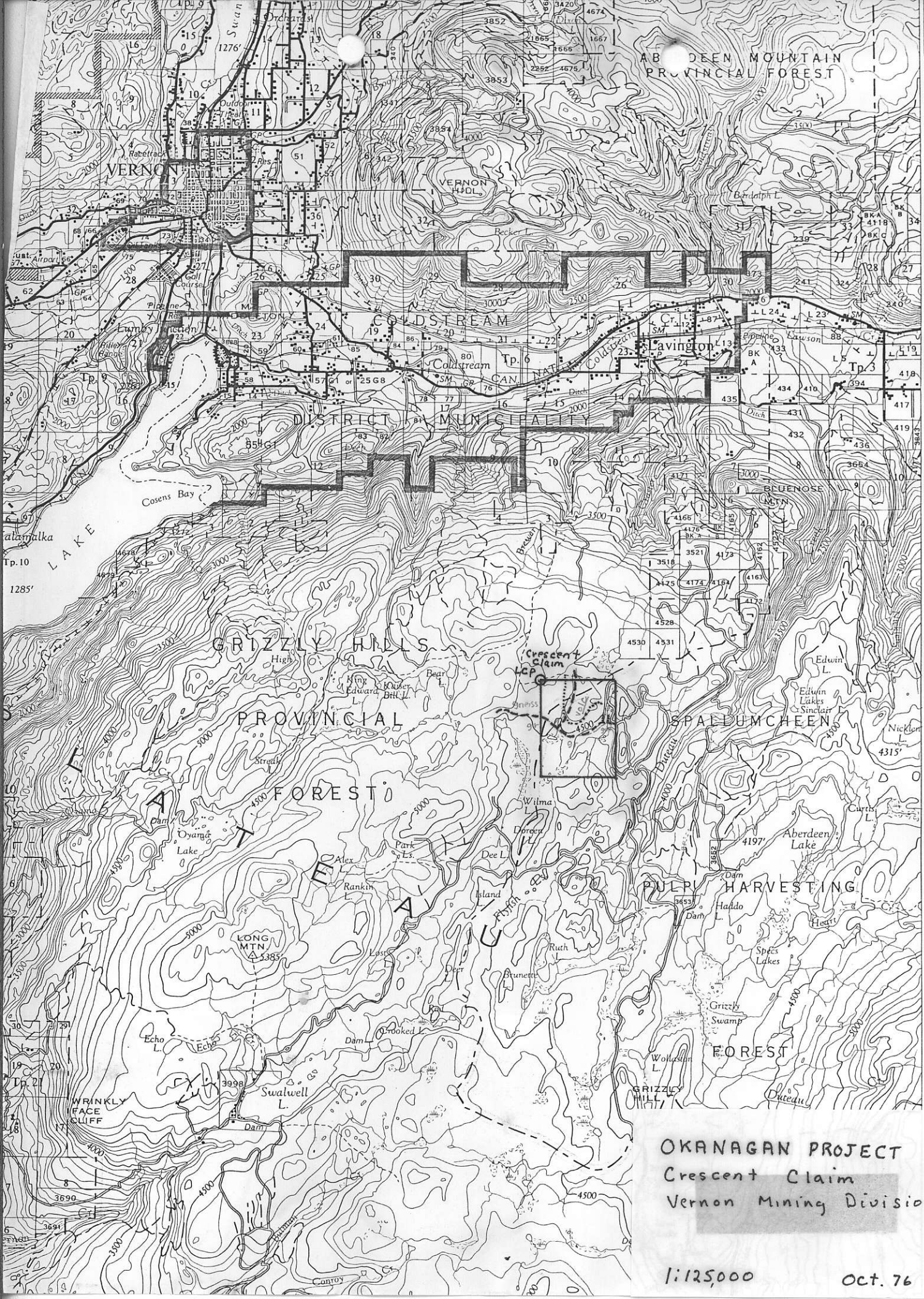
CRESCENT 1-4 CLAIMS  
 VERNON M.D.  
 Geological Sketch  
 August 25, 1977 KLD  
 Scale 1:50,000

Legend

- Lineament - possible post-Miocene fault?
- Miocene basalt & breccia (A)
- Miocene sediments
- Mesozoic plutonic rocks
- Monashee gneiss

ddh/77

copies to D. A. Laurie  
 P. T. Black  
 Oct. 17/77



ABERDEEN MOUNTAIN  
PROVINCIAL FOREST

VERNON

VERNON  
MUNICIPALITY

GOLDSTREAM

Spaldumcheen

GRIZZLY HILLS

PROVINCIAL  
FOREST

SPALDUMCHEEN

PULP HARVESTING

FOREST

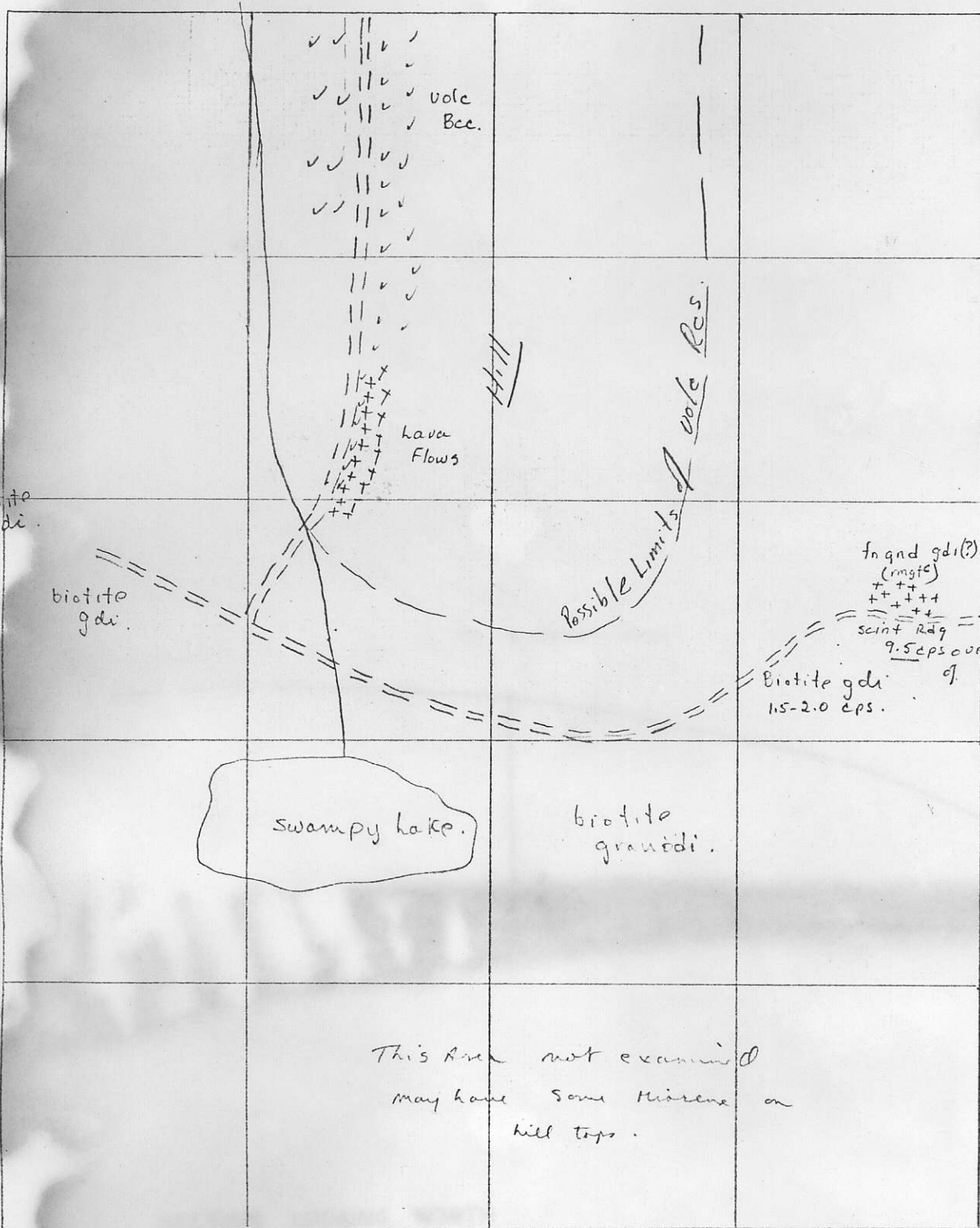
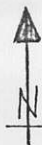
OKANAGAN PROJECT  
Crescent Claim  
Vernon Mining Division

1:125,000

Oct. 76

15'  
2 miles  
To Lumby  
To Lumby

# Oranogan Project.



Crescent Claim  
 Duteau Cr. Area  
 Vernon, M.D.