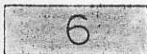
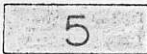


LEGEND



Miocene Lavas



Volcanic breccia and volcano-clastic sediments



Interlava sands



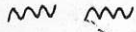
Miocene ; sands , gravels



Foliated granodiorite , possibly related to Valhalla intrusion



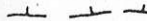
Monashee gneiss



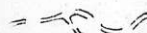
Fault



Contacts , observed and inferred



Bufs : volcanic fronts.



Roads



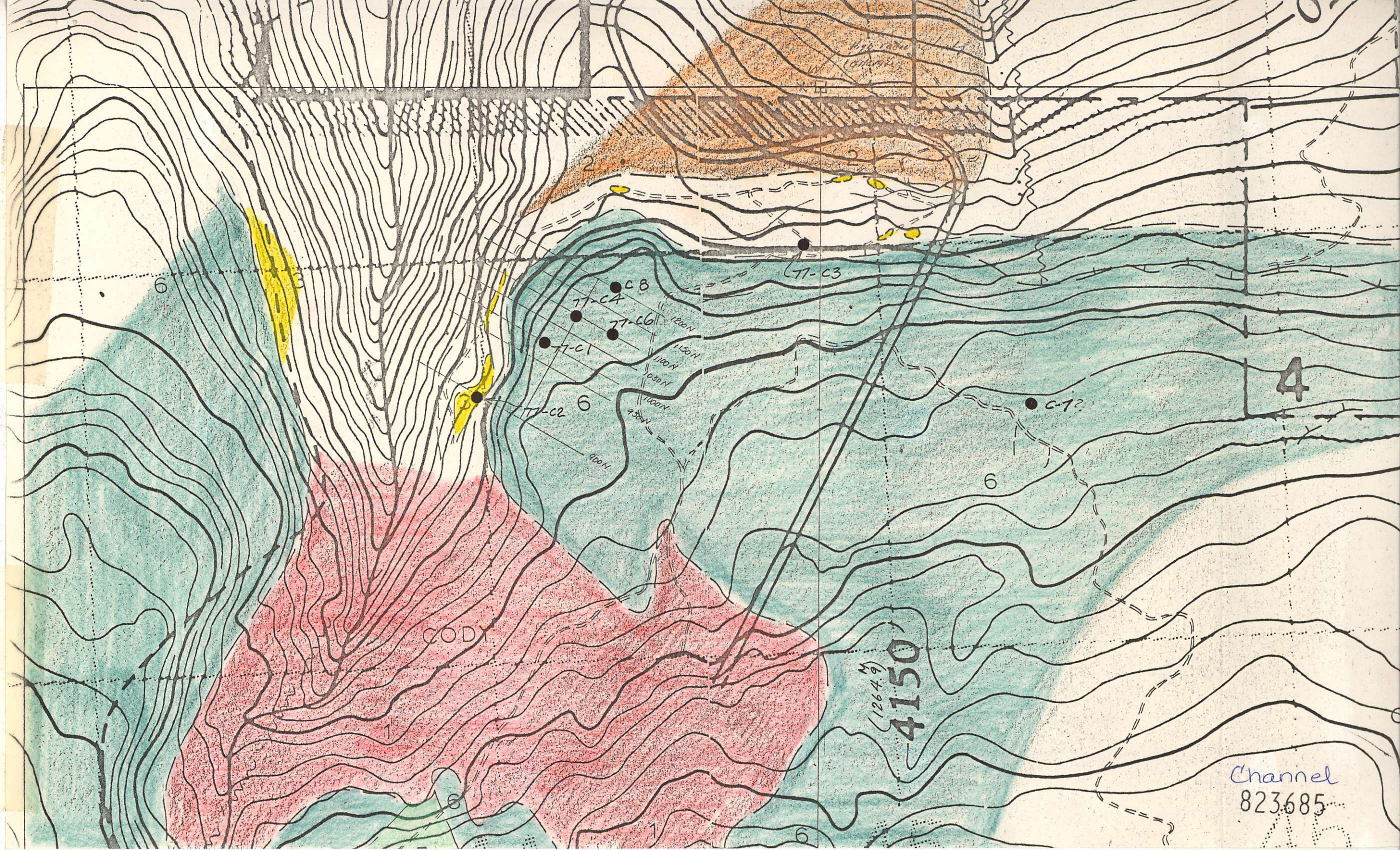
Drill hole : completed , proposed

observed

map

file

*copies to : DA Louise
PT Black*



6

3

6

6

4

CODY

4150
(1264.9)

Channel
823685

C-8
TT-C4
TT-C6
TT-C1

TT-C3

C-7?

100N

150N

200N

100N

150N

200N

6

1

6