

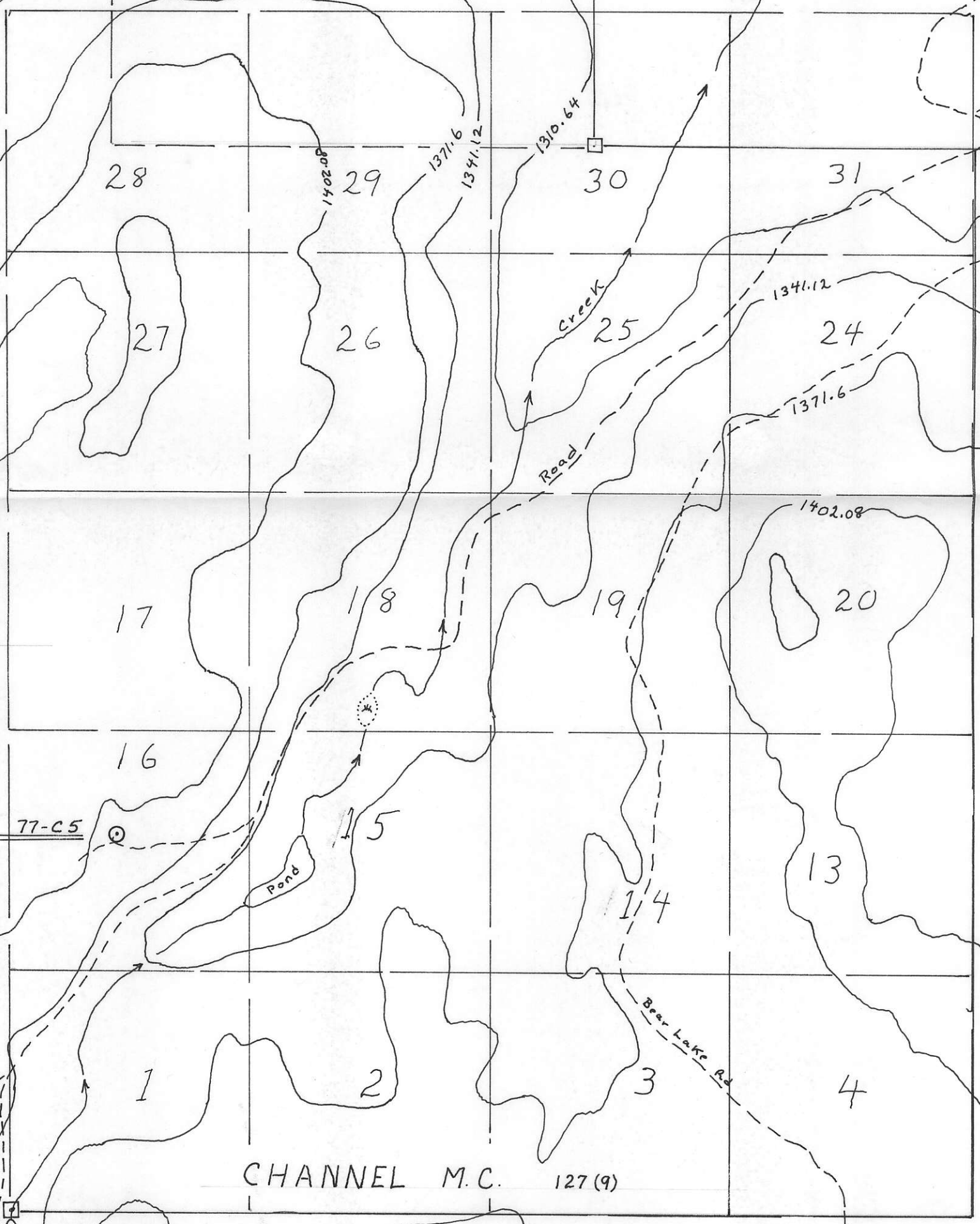


119°13'

CHANNEL 3 M.C.

CODY M.C.

Rd to Vernon



Drill Hole 77-C5

LCP

King Edward Lake

119°13'

CHANNEL M.C. 127 (9)

823676

Kerr Addison Mines Ltd.
CHANNEL OPTION
Vernon Mining Div.
Map showing Drill hole location and Claim boundaries.
Date: Sept 14, 1977
Scale: 1:10,000
John L. Lund P.Eng.