

KERR ADDISON MINES LIMITED

SUITE 703 - 1112 WEST PENDER STREET  
VANCOUVER, B.C. V6E 2S1  
PHONE 682-7401

823640

April 25, 1983.

Dome Petroleum Limited  
Box 200  
Calgary, Alberta  
T2P 2H8

Attention: Mr. G. I. Hall  
Staff Geologist

Dear Mr. Hall:

I return herewith your 1980 and 1981 reports on the Queest Project (Coyote Claims) which were sent under cover of your letter dated March 7, 1983.

We have elected not to proceed further with this property but nevertheless extend to you our thanks for making this data available for scrutiny and our best wishes in your continuing efforts.

Yours sincerely,

*R. A. Dujardin*  
R. A. Dujardin  
Regional Exploration Manager

RAD/lk  
Enclosure  
c c - A. D. Clendenan

*FILE COPY.*

Some Petroleum Limited  
Box 200  
Calgary, Alberta  
T2P 2H8

cc AC

Attention: Mr. G.I. Hall, Staff Geologist

Dear Mr. Hall

I return herewith ~~the~~ <sup>your</sup> 1980 and 1981 reports  
on the <sup>QUEST</sup> Quest Project (Coyote Claims) which  
were sent under cover of your letter dated  
March 7, 1983.

We have elected not to proceed further  
with ~~this~~ property but nevertheless extend to  
you ~~our~~ our thanks for making the data  
available for scrutiny and our best wishes  
in your continuing efforts.

Yours sincerely



Norman - please get Bob to put together  
the reports to go with this - Sign this  
letter for me.

MEMO

VANCOUVER OFFICE

File  
↓

TO: File 82 L 15

FROM: A. D. Clendenan

SUBJECT: QUEEST PROJECT (Coyote Claims)

DATE April 15, 1983

The Queest Project was selected by R. A. Dujardin from a number of projects summarized in "Mineral Properties, March 1982, Volume 5" by Dome Petroleum Ltd., page 18 of 46 is attached and gives location, etc. data and figure 1 shows the claims and drill hole locations.

According to their summary the target was a Cu-Au massive sulphide. However, their reports indicate the claims were staked as a porphyry Mo target after locating Mo in granodiorite float and subsequently in outcrop, around B.P. Minerals Mal 1 claim. .

In 1980, on the Coyote 10 claim, a strongly oxidized stratiform massive sulphide horizon was discontinuously exposed in intermittent trenching over 200 metres. The best analytical results obtained from this showing were 1250 - 2000 ppm Cu with background values of Mo, Pb, Zn, and Ag. The hanging wall is a finely banded quartzite-quartz-biotite gneiss in the north and a limestone in the south.

A boulder from Coyote 16 contained 60% pyrrhotite and ran 1 ppm Mo, 3090 ppm Cu, 283 ppm Pb, 37 ppm Zn and 4.8 ppm Ag. The source is unknown. The chances of locating much tonnage of 60% pyrrhotite is small and even then the values are too low by at least an order of magnitude.

The ground magnetics survey shows a slight N.W. trend but the values are contourable only over short distances. The IP chargeability and resistivity surveys are not very definitive. The soil sampling on the east 1/2 of the claims shows very weak spot anomalies in Zn and Pb and a weakly anomalous Ag zone (to 1.2 ppm, avg. 0.6 ppm) on L 123 N from 128-132 E, and a weakly anomalous Mo zone (to 13 ppm, avg 6 ppm) from L 114 N to L 118 N between 125-132 E. Cu was not anomalous in the East or West 1/2 of the claims. No marginally significant values in Zn, Pb, Ag or Mo were noted in the west 1/2 of the claims. One silt sample taken from the area diamond drilled in '81 ran 218 ppm Ag at L 120 E 125 N.

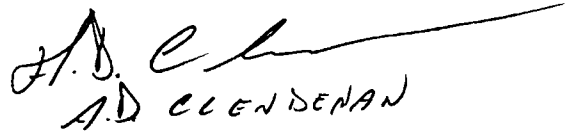
... 2

The Mo bearing granodiorite was diamond drilled in 1981 with the best results being 90 ppm Mo over 1 meter in C81-3, 1210 ppm Cu over 1 meter in C81-2 and 200 ppb Au over 2 meters in C81-3. The copper is associated with meta-volcanic hosted pyrrhotite-chalcopyrite stringers and the Au is associated with a quartz breccia which appears from the drill logs to be of restricted extent.

The Mo and IP anomalies have been test by diamond drilling and found lacking.

The evidence for a potential massive sulphide deposit is sketchy and the rock association does not seem favourable.

I recommend we do not option or examine the Queest claims.



A. D. CLENDENAN

A. D. Clendenan

Attached:

cc - R. A. Dujardin

- F. Chow

## QUEEST

COMMODITIES: Copper and gold

TARGET SIZE: 5 million tonnes grading 2% copper and 5 grams per tonne gold

LOCATION: Southern British Columbia. The property is located on the north side of the Trans Canada Highway near Malakwa. The property is entirely road accessible.

GEOLOGICAL MODEL: Massive sulphides with gold.

GEOLOGY: Multi-deformed metasedimentary and metavolcanic rocks of the Paleozoic Eagle Bay Formation are cut by Cretaceous age felsic intrusive rocks containing traces of molybdenite on fractures and as disseminations. Massive pyrite/pyrrhotite lenses and lead-zinc bearing skarns occur in metasediments in several places near the contact. Drilling results in 1981 indicate copper stringers in volcanics and gold in quartz breccia.

PROPERTY: 8950 ha - owned 100% by Dome under mineral claims.

### EXPENDITURE HISTORY:

	Expenditure	Exploration
1980	\$ 96 000	Geology, Geophysics, Geochemistry
1981	<u>110 000</u>	Diamond Drilling
Total	<u>\$ 206 000</u>	

### PROPOSED 1982

PROGRAM: A program of deep-penetrating EM geophysical surveying should be undertaken to assess the potential for buried economic massive sulphides on the property.

Recommended Net Expenditure - \$100 000

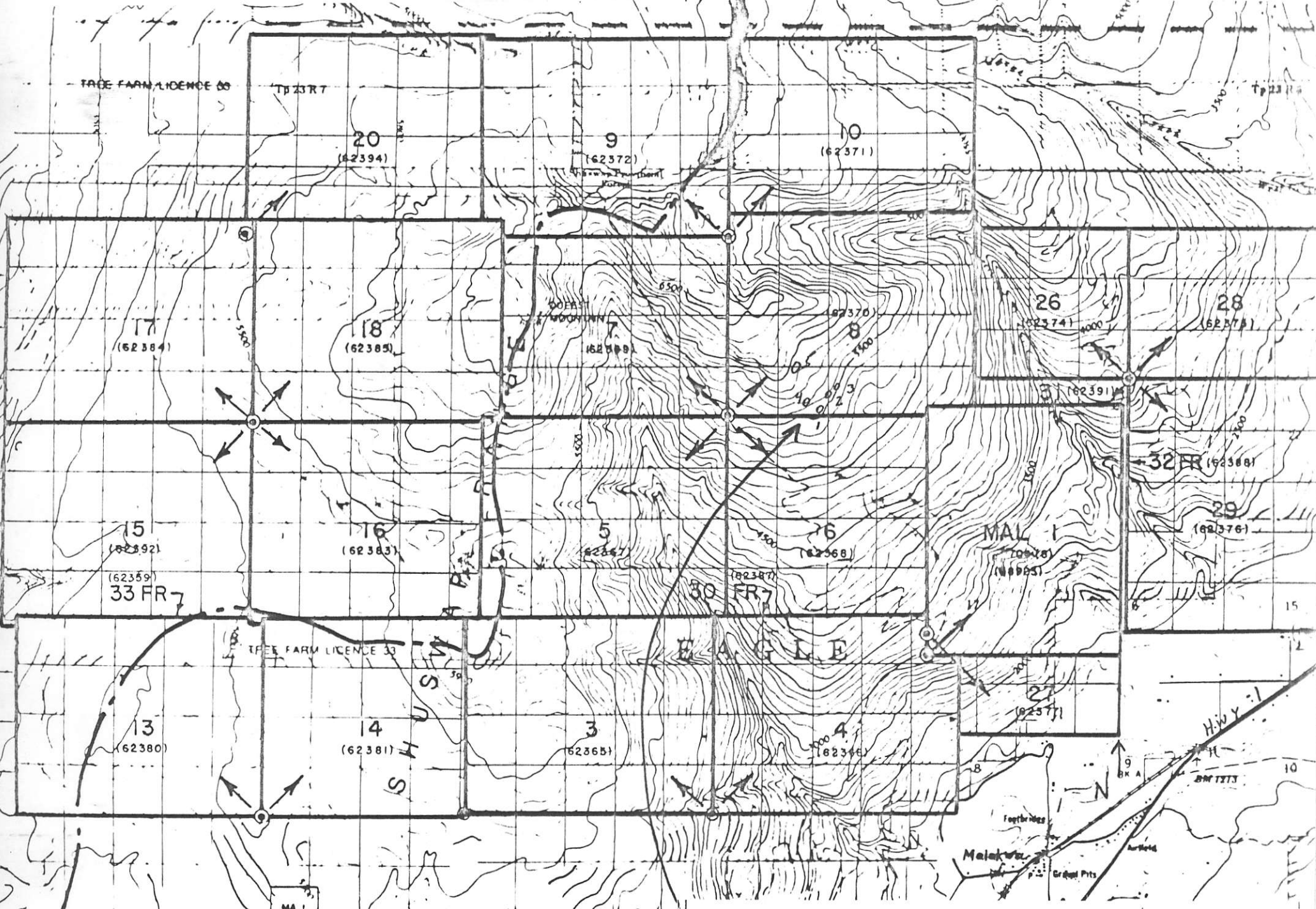
Minimum Net Expenditure - Nil

### MAIN

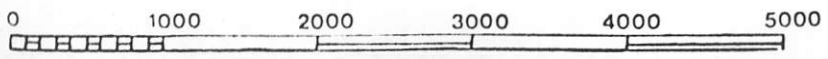
REFERENCES: Bresee, P. (1982) - Assessment Report: Report on Diamond Drilling Coyote 6 and 8 Claims

G.S.C. Open File 637 (1978) - Lithology, Stratigraphy, Structure and Mineral Occurrences, Thompson-Shuswap-Okanagan Map Area

Hall, G. I. et al (1981) - Assessment Report: Report on Geology, Geochemistry, Geophysics - Coyote Claims



Scale 1 : 50,000



**Hudbay Mining Limited**  
 A Subsidiary of Hudson's Bay Oil and Gas Company Limited



DDN C 81-1 to 5

82 L 15

**COYOTE CLAIMS**

# DOMESTIC PETROLEUM LIMITED

BOX 200  
CALGARY, ALBERTA, CANADA  
T2P 2H8

(403) 260-5100

1983 03 07

Mr. R. A. Dujardin  
Regional Exploration Manager  
Kerr Addison Mines Ltd.  
Suite 703  
1112 West Pender Street  
VANCOUVER, B.C.  
V6E 2S1

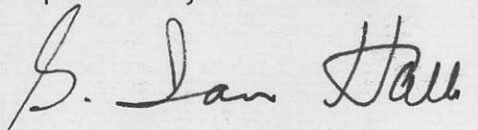
Dear Mr. Dujardin

Further to our telephone conversation of March 4, I am sending along one copy of our 1980 and 1981 reports on the Queest Project (Coyote Claims) and a copy of the present claim status.

If you decide not to proceed after examining the reports, please return them to us.

Yours very truly

Special Projects - Minerals



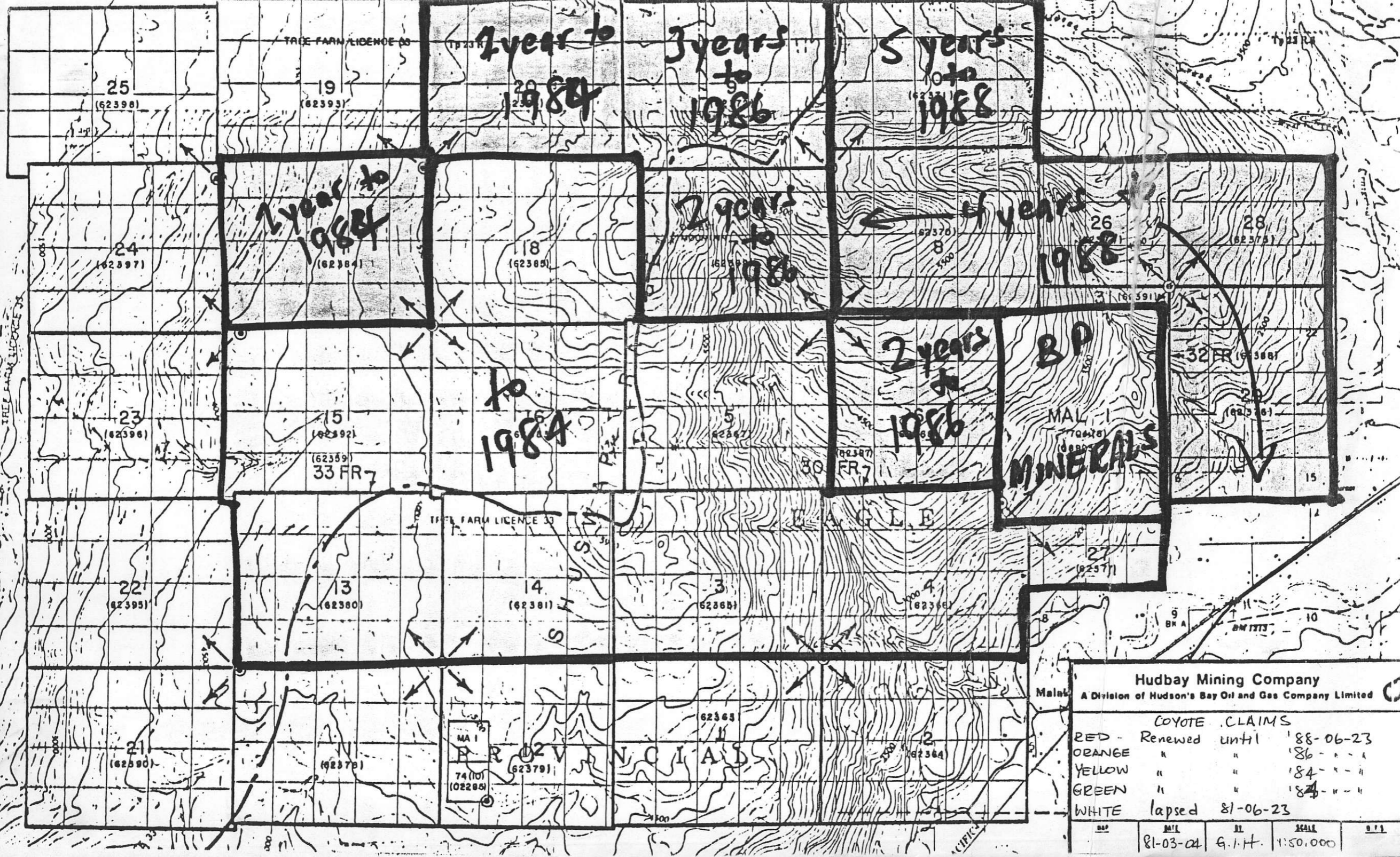
G. I. Hall  
Staff Geologist

GIH/gs  
encl.

RECEIVED

MAR 8 1983  
KERR ADDISON MINES LTD.

PER



<b>Hudbay Mining Company</b>				
A Division of Hudson's Bay Oil and Gas Company Limited				
<b>COYOTE CLAIMS</b>				
RED	Renewed	until	'88-06-23	
ORANGE	"	"	'86- - - -	
YELLOW	"	"	'84- - - -	
GREEN	"	"	'84- - - -	
WHITE	lapsed		81-06-23	
MAP	DATE	BY	SCALE	REV.
	81-03-04	G.I.H.	1:50,000	



MEMO

VANCOUVER OFFICE

TO: File 82 L 15FROM: A. D. ClendenanSUBJECT: QUEEST PROJECT (Coyote Claims)DATE April 15, 1983

The Queest Project was selected by R. A. Dujardin from a number of projects summarized in "Mineral Properties, March 1982, Volume 5" by Dome Petroleum Ltd., page 18 of 46 is attached and gives location, etc. data and figure 1 shows the claims and drill hole locations.

According to their summary the target was a Cu-Au massive sulphide. However, their reports indicate the claims were staked as a porphyry Mo target after locating Mo in granodiorite float and subsequently in outcrop, around B.P. Minerals Mal 1 claim. .

In 1980, on the Coyote 10 claim, a strongly oxidized stratiform massive sulphide horizon was discontinuously exposed in intermittent trenching over 200 metres. The best analytical results obtained from this showing were 1250 - 2000 ppm Cu with background values of Mo, Pb, Zn, and Ag. The hanging wall is a finely banded quartzite-quartz-biotite gneiss in the north and a limestone in the south.

A boulder from Coyote 16 contained 60% pyrrhotite and ran 1 ppm Mo, 3090 ppm Cu, 283 ppm Pb, 37 ppm Zn and 4.8 ppm Ag. The source is unknown. The chances of locating much tonnage of 60% pyrrhotite is small and even then the values are too low by at least an order of magnitude.

The ground magnetic survey shows a slight N.W. trend but the values are contourable only over short distances. The IP chargeability and resistivity surveys are not very definitive. The soil sampling on the east 1/2 of the claims shows very weak spot anomalies in Zn and Pb and a weakly anomalous Ag zone (to 1.2 ppm, avg. 0.6 ppm) on L 123 N from 128-132 E, and a weakly anomalous Mo zone (to 13 ppm, avg 6 ppm) from L 114 N to L 118 N between 125-132 E. Cu was not anomalous in the East or West 1/2 of the claims. No marginally significant values in Zn, Pb, Ag or Mo were noted in the west 1/2 of the claims. One silt sample taken from the area diamond drilled in '81 ran 218 ppm Ag at L 120 E 125 N.

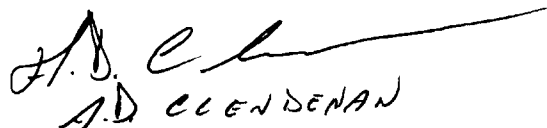
... 2

The Mo bearing granodiorite was diamond drilled in 1981 with the best results being 90 ppm Mo over 1 meter in C81-3, 1210 ppm Cu over 1 meter in C81-2 and 200 ppb Au over 2 meters in C81-3. The copper is associated with meta-volcanic hosted pyrrhotite-chalcopyrite stringers and the Au is associated with a quartz breccia which appears from the drill logs to be of restricted extent.

The Mo and IP anomalies have been test by diamond drilling and found lacking.

The evidence for a potential massive sulphide deposit is sketchy and the rock association does not seem favourable.

I recommend we do not option or examine the Queest claims.



A.D. CLENDENAN

A. D. Clendenan

Attached:

cc - R. A. Dujardin  
- F. Chow

## QUEST

COMMODITIES: Copper and gold

TARGET SIZE: 5 million tonnes grading 2% copper and 5 grams per tonne gold

LOCATION: Southern British Columbia. The property is located on the north side of the Trans Canada Highway near Malakwa. The property is entirely road accessible.

GEOLOGICAL MODEL: Massive sulphides with gold.

GEOLOGY: Multi-deformed metasedimentary and metavolcanic rocks of the Paleozoic Eagle Bay Formation are cut by Cretaceous age felsic intrusive rocks containing traces of molybdenite on fractures and as disseminations. Massive pyrite/pyrrhotite lenses and lead-zinc bearing skarns occur in metasediments in several places near the contact. Drilling results in 1981 indicate copper stringers in volcanics and gold in quartz breccia.

PROPERTY: 8950 ha - owned 100% by Dome under mineral claims.

### EXPENDITURE HISTORY:

	Expenditure	Exploration
1980	\$ 96 000	Geology, Geophysics, Geochemistry
1981	<u>110 000</u>	Diamond Drilling
Total	\$ 206 000	

### PROPOSED 1982

PROGRAM: A program of deep-penetrating EM geophysical surveying should be undertaken to assess the potential for buried economic massive sulphides on the property.

Recommended Net Expenditure - \$100 000

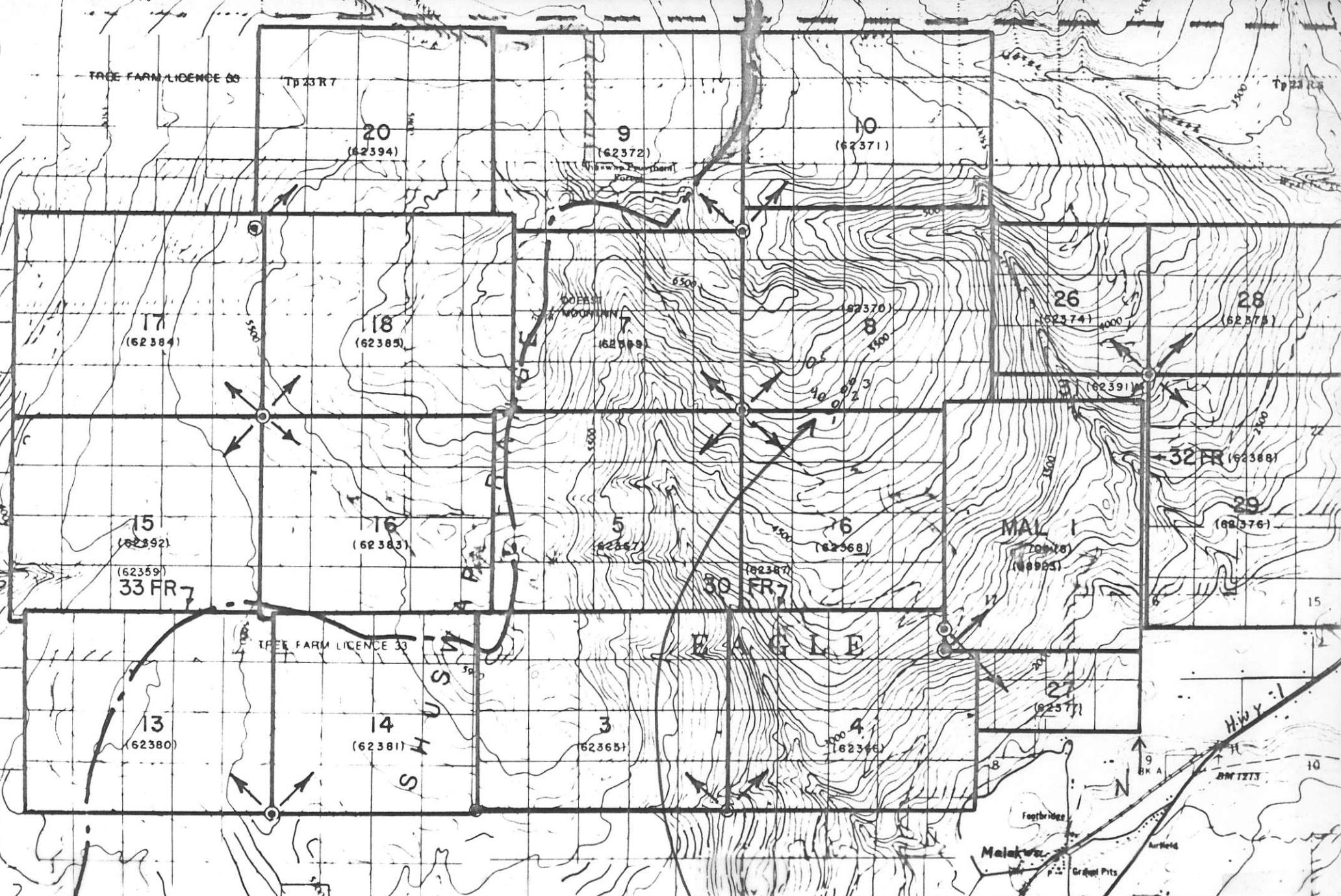
Minimum Net Expenditure - Nil

### MAIN

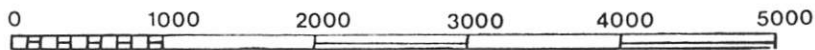
REFERENCES: Bresee, P. (1982) - Assessment Report: Report on Diamond Drilling Coyote 6 and 8 Claims

G.S.C. Open File 637 (1978) - Lithology, Stratigraphy, Structure and Mineral Occurrences, Thompson-Shuswap-Okanagan Map Area

Hall, G. I. et al (1981) - Assessment Report: Report on Geology, Geochemistry, Geophysics - Coyote Claims



Scale 1 : 50,000



Metres

A D

Hubbay Mining Limited  
 A Subsidiary of Hudson's Bay Oil and Gas Company Limited



DDN C 81-1 to 5

82 L 15

# COYOTE CLAIMS