

11705

Geoch & Geoph - Hon Claims

Glover Creek Area

49° 12'

118° 27.5'

1983

- looking for mass sulf Au zones
- 1 km east is Pathfinder property - 1920
 \Rightarrow 1250 tons \Rightarrow .43 oz/t Au 3.9 oz/t Ag

- Simpson Mine 364 tons \Rightarrow 2592 oz Au
 90 oz Ag

~~located on claim group~~ just N of Hon??

- Hon claims cover Coryell with plugs of Nelson Intrusive

Miniz'n

1. Here claim \rightarrow veins of mass. py + py, cpy (no qtz)
2. Simpson zone = qtz filled shear in Anarchist gst
 shear \Rightarrow py, po, cpy
 100 feet wide
3. Gossan with disse py, po, cpy in qtz dio-
 500' x 1000' ??

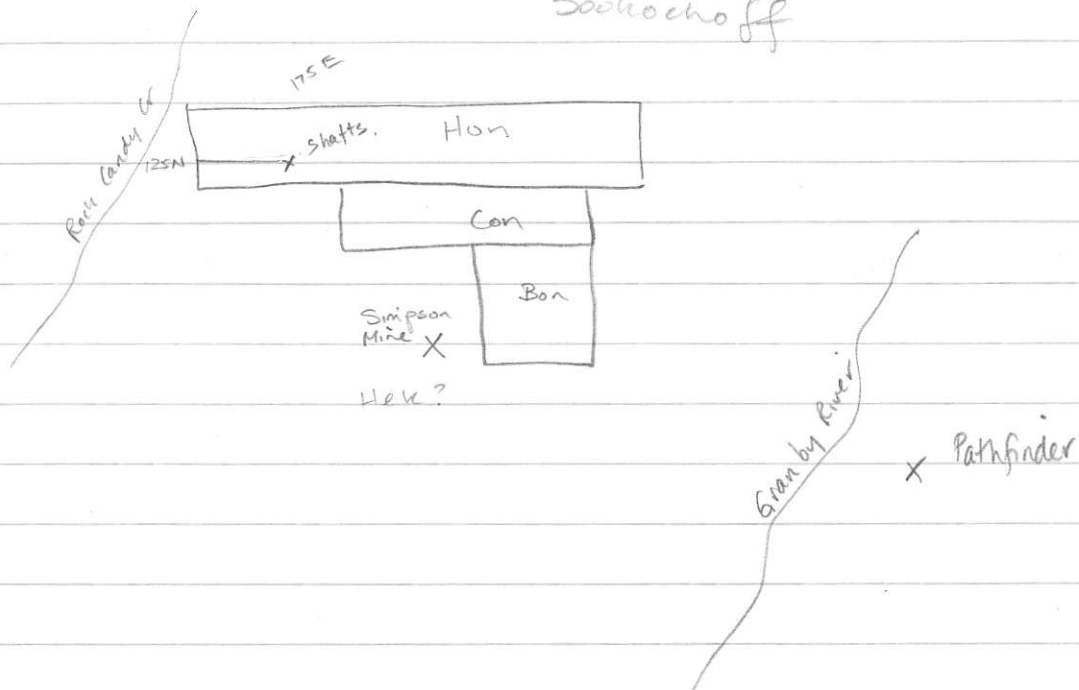
No geol or showing maps

13,165

Geoph & Groch

Hon Clam's

1984
Sookochoff



found several old shafts

Order

13,546

1984

Dam Drilling Hecla Claims

Consol Bndry Expl

L. Sookochoff

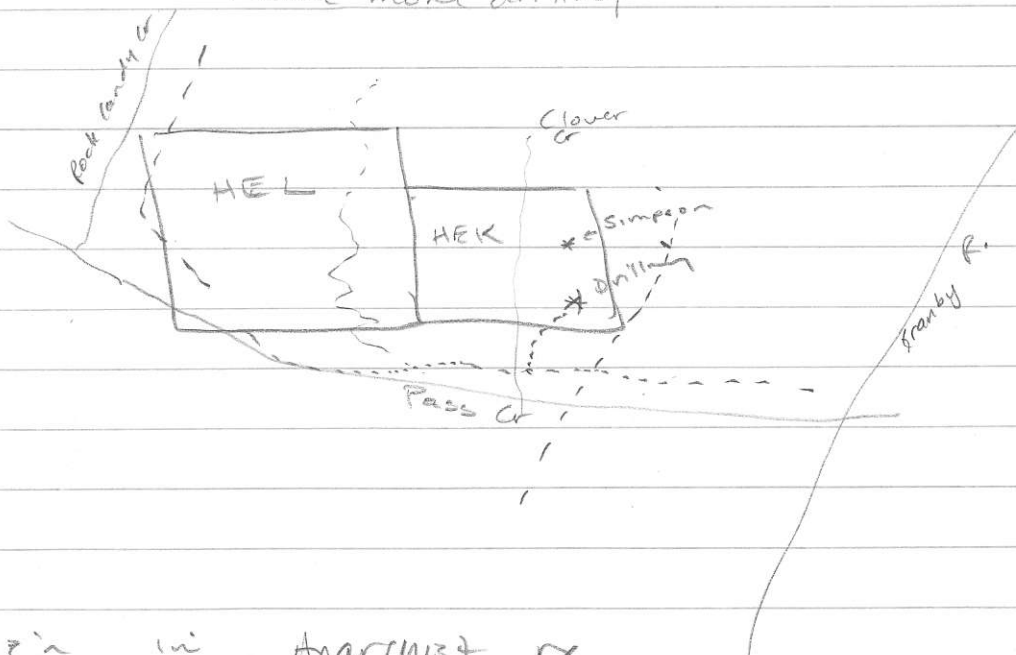
427' , BQ cone

1930's → Simpson Mine

1939 Hecla Mining 364 tons → .71oz Au/t .25oz Ag/t

Fento Mines 18' → .3 oz/t Au 3.75 oz/t Ag
drilling .5% Cu

to 1976 Cons Bndry .20 oz/t Au over 34 ft
+ some more drilling



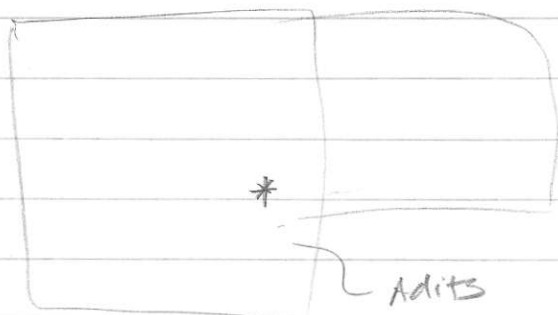
mine in Anarchist rx

11,959

Geol / Geochem
Claims

Rock Candy / Cougar

Acorn Resources, Feb / 84



2 adits in Nelson intrus
sulfide mineral; py repl inbld

Geology

NW central parts underlain by
mica schists / gneisses → Grand Forks
Group.

- Nelson Intrusives

- Cozyelle intrusion above

- All above intruded by trachytes, etc