

Camp McKinney Area 82E
Cyril Heady + Art Hook

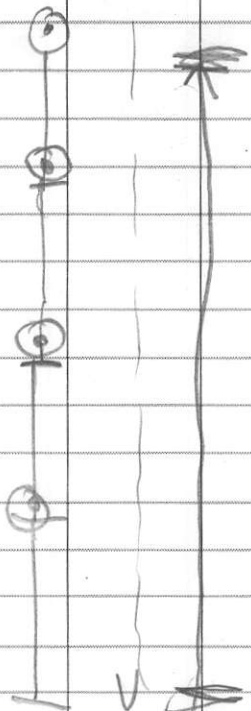
JOB NO.....

DATE.....

823315

- Hook
498-4121

Heady
098-4108



PARTY CHIEF.....

WEATHER.....

nw
wade

10133

Chl-Carb Schist

It is a Diorite

5% Carb veinlets 1cm

x-cutting

strong fol^M w/ intense

chl + carb but some

blockier areas show it is a

Diorite 3-MM

10134

Strong carb zone

foliated w/ brn weathering

5-10% Grn mica

10% Qtz-Carb veinlets

tr py 2 1/2 M true width

10135

Chl-Carb Schist Dio?

strong chl + carb altⁿwell fol^M

tr dissem py

JOB NO.....

DATE.....PAGE.....

Aug 8/88

BCS 10136

near BK-47

maybe a lmst

alt w/ chl. bands

+ Qtz veinlets x-cutting

bedding? 020/20° W

strong carb oxidⁿ

grn mica's - carb alt shear zone

there is
scrp

10137

float

silic^d + carb alt shear

w/ 1% py

+ scrp

10138

Lmst + Gmsstne

Interbedded w/

Bedding 010/20° W

old pit w/ wke silic^d

+ hem alt Lmst

PARTY CHIEF.....

WEATHER.....



10130

Carb Altd - Mylonite?

- Heavily carb alted

w/ minor Qz's

- tr-3% dissem py

* Float (Same as up creek,
but less intense)

10131

Strongly fol^d Dio w/
carb pods along fol^d

10-20cm carb pods

- strong chl on fol^d- carb has lt orange coloration
approaching ark float!

10132 by 281-876K-27

extreme chl - carb schist

minor Qtz veinlets

Sed? or Maf Volc

or Dio?

Yes Dio

10127

Highly foliated diorite
 w/ interstit carb
 occas carb veinlet on fract
 strong chl on fract
 - occas carb veinlet

10128

Chert + Avg Mod foliated
 - silic matrix w/ \pm graph + chl
 on fract
 - occas graph zones
 - tr dissemin py

10129

Foliated Diorite
 Strong chl on fract
 3M chip across folⁿ on S Side
 of adit
 Mod interstit carb
 tr py
 non mag,

PARTY CHIEF.....

WEATHER.....



515/8689

JOB NO.....

DATE.....PAGE.....

10124 ✓

Blocky FGv Dio or Grnstne

4M chip

FGv matrix w/
Serp + chl on fract
carb on fract

10125

FGv Diorite

Clearly porph
chl on fract

tr on w/ carb alt zones
w/ interstit carb

10126

FGv Blocky Dio

w/ en echelon km

QV's w/ tr on
mod chl gln

minor Epidote

w/ky zons.

PARTY CHIEF.....

WEATHER.....



10121

FGr Mafic Dio

Mod folⁿMod chl altⁿ5% 1-5mm carb veinlets on
fract

10122

FGr - MGr Diorite

Mod folⁿchl on folⁿ

non magnetic

5% 1-5mm Carb veinlets

4m wide sample

10123

QV flt

(out of adit?)

20cm QV

Milky White

w/ 10% Crse pg as bands

+ dissem

- chl on fract

strong interstit
carb

PARTY CHIEF.....

WEATHER.....



515/8689

JOB NO.....

DATE.....PAGE.....

10118 ✓
Gneiss w/
serp on fract
minor carb veinlets

10119
MGr Dio Heavily fract
w/ serp on fract minor
1cm Qtz's + occas carb
veinlet non magnetic

10120
Talus from shear zone
Qtz-Carb vein
30-40cm w/ 5% Py
tr Gta
all sorts of float

* Search up the hill

PARTY CHIEF.....

WEATHER.....



10115

FGR Garnetne on Dio?

Probably Dio
strongly fract

w/ tal chl on fract

- 3% Qtz - Carb.

- occas py patch

SM chip

10116

Garnetne

Serp + chl on fract

~~Matrix~~ FGR matrix

occas 1cm QV on fract

5% Carb veinlets

w/ interstit carb

More foliated than Diorite

tr dissem py

10117

High Grade Adit Dwno w/

5-10% cm QV's w/ 10-15% Py, 5+% Ga

tr Cpy, sp

Assay

JOB NO.....

DATE.....PAGE.....

10112 ✓
Talc from dump
seep on fol^{ls}
w/ carb veins || to
fol^m occas QV 1-10cm
290 Avg Crse Dissem Py

10113
MGr Dio
Blocky MGr Dio
Mod. Sheared
w/ talc on fract
(sometimes texture obliterated)
tr py

10114
Sheared MGr Dio
Talc on fract
10-15% Carb Vainlets
tr dissem py
non-magnetic

PARTY CHIEF.....

WEATHER.....

NW
wade

JOB NO.....

DATE.....PAGE.....

10108

Adit w/ Qv in Arg highly deformed
IM chip section

tr py

arg has 5% Py

101010

MGr Mafic Diorite

10-15% Qtz Veinlets

very blocky w/ up to 5-8% dissem py

Non mag

10109

Hornfelsed graphitic sed

2-3% Py?

Quite silicified

10111

Old Mill Dump

Talc w/ carb + Qtz

Schist 2-3% Py

PARTY CHIEF.....

WEATHER.....



515/8689

JOB NO.....

DATE.....PAGE.....

10104 Hornfelsed Seds
60+9% Silica along
fol
- no carb

10105 QV Float Dump?
Massive QV w/ malach
seric schist host
tr ga, mn

10106
Shear-Zone Mylonite
1M wide
QV's strong deformed in
arg along fault
wht barren

10107
QV dip has changed to
70° N
~1M wide?
Malach w/ 2-3%
Crse Py blades QV Deformed
Grab

PARTY CHIEF.....

WEATHER.....



BCS 10101 - HS

Massive

Blocky Intrusive w/ 1-5mm = Diabase?
Alt^r / FP^s- FGr matrix w/ mod - strong
interstit carb

- 5% pyhrn Wkly Magnetic

10102 Hornfelsed Seds

2-3% Py dissem

orig argill?

10% lcn Qtz Veinlets ± 1% Gr⁺ Grⁿ

Micas

- Strong folⁿ 100/30° W

- Wk Carb interstit

10103 Hornfelsed Seds

orig Arg w/ 50-60% Silicⁿalong folⁿ

1-2% Py

no carb

JOB NO.....

DATE.....PAGE.....

PARTY CHIEF.....

WEATHER.....



JOB NO.....

DATE.....PAGE.....

78 - Serp + Carb alt'd Gneiss

79 felsic Dyke on Powerline

80 Hn-Px Intrusive

81 Gneiss

82 FGR Dio
Hem Dio

83 Chert w/ Arg

84 Chert + Arg

85 - Blocky Dio

PARTY CHIEF.....

WEATHER.....



515/8689

JOB NO.....

DATE July 19.....PAGE.....

CONTROL POINT BRIDGE OM ELEV. OM					
0+50M - 120°					

PARTY CHIEF.....

WEATHER.....



515/8689

JOB NO.....

DATE.....PAGE.....

10171 ✓

Carb veins w/

2-3% py

tr qtz micas

chl w/ strong folia

10172

Carb alt'd zone

w/ 5% py

some qtz micas + some stauk

76

Shear Zone

170/70E 40cm wide

in Adit NW

77

QU 30cm wide

10M in adit

Heavily oxidized

PARTY CHIEF.....

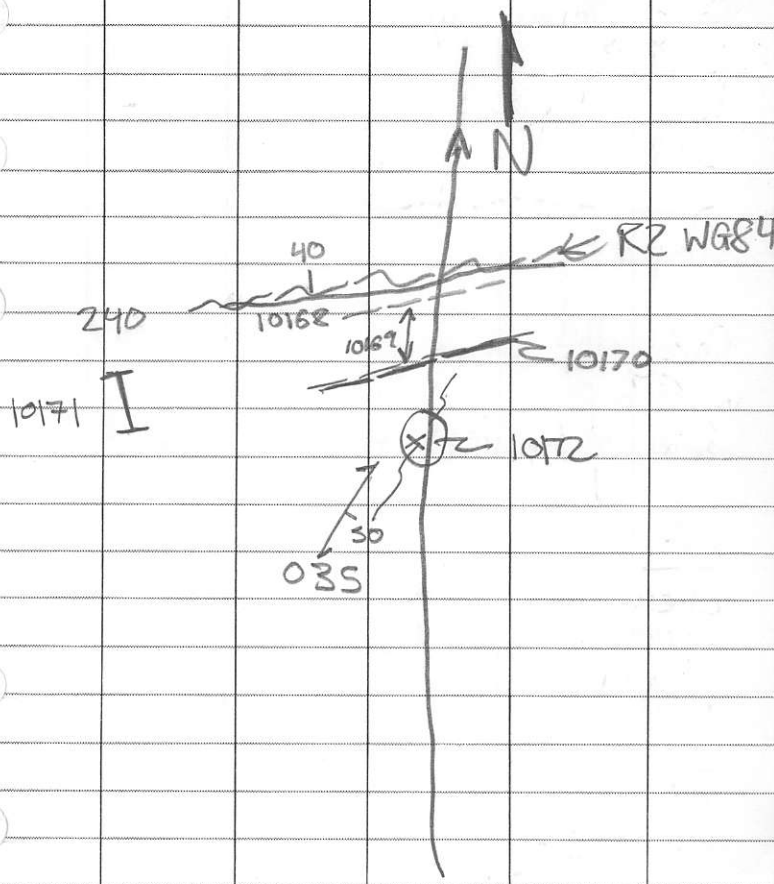
WEATHER.....



JOB NO.....

DATE.....PAGE.....

Fuchs site Zone



PARTY CHIEF.....

WEATHER.....



515/8689

JOB NO.....

DATE.....PAGE.....

10167
Px Basalt - Tent Fl
Quite Magnetic
Phenocrysts 14mm
Bedding 175/30° E
tr py

10168
30+ cm
Shear zone w/ QV
10% Py, 2-3% Py
240/40° N

10169
2m wide
strong grn mica
w/ QV & carb altⁿ
5% Py, tr Ga

10170
10cm Qtz-Carb Vein
10+% Py, tr Ga

PARTY CHIEF.....

WEATHER.....



JOB NO.....

DATE.....PAGE.....

10164

Shear zone

2M wide quite gossanous

3-4% Py w/ 1-4 cm

QV₃

wallrock silicified

050/50° SE

10165

FGr Mafic Dio

Blocky w/ calcite on (L)

fract w/ calcite

tr py

10166

FGr Grn - or Dio ??

035/50° E folⁿ

w/ chl + carb on fract

tr py

some brn weathering like grn

PARTY CHIEF.....

WEATHER.....



515/8689

10161
 Strongest part of
 shear zone
 strong limonite
 w/ folⁿ mod - strong
 ~ 2% py
 3M chp

(G)

10162

Shear zone w/
 serp + fgn silic rock
 (maybe serps)
 calcite veins + 1%
 dissem py
 folⁿ 020/70°E

(G)

Shear Zone w/
 QV + Altn

10163

030/60°E
 3-4% dissem py
 seric alt^d selvages
 30 cm wide

(G)

10158

FGr - MGr Diorite

Blocky

tr py, tr pyhr
carb alt zone
~ 1M wide

(L)

Fracture 295/45 SW

10159

Shear Zone in FGr Dio

OSS/70° SE

5-10% Pyhr, tr py, tr sp
w/ silica

w/ gossan

host is fgr dio mafic

(G)

10160

Across the face of the adit

3-4M

adit on shear 040/50° SE

sheared dio, w/ silica
tr py

JOB NO.....

DATE.....PAGE.....

10156

10cm QV in
Diorite @ $060/90^{\circ}$
tr py
Qtz Vein

10157

Gneiss
Muscovite and Biotite
rich laminated
at $135/50$ SW
some x-cutting Qtz veinlets

PARTY CHIEF.....

WEATHER.....



JOB NO.....

DATE.....PAGE.....

10153 ✓

Crse Hb Diorite
Hb xtals to 5mm
in a green matrix
quite blocky

10154

Rock CRK Dio
Blocke FGr Grn Matrix
w/ Hb + Fb Phenos ~ 1mm
tr py

10155

FGr Dk Grn Dio
Blocky w/
Hb + FP Porphyry
Occas Qtz Veinlets
fract 045/90°

PARTY CHIEF.....

WEATHER.....



515/8689

JOB NO.....

DATE.....PAGE.....

10150 ✓

Granite on Powerline
for gm-bm granite
blocky

w/ some Qtz veinlets

- Occas gtzite? blob

10151

Felsite Dyke

1+M wide in sects

very siliceous

Qtz veinlets

w/ tr py

10152

10cm Qtz vein

~ G90/90

in Hb Dio

1% Crse py

PARTY CHIEF.....

WEATHER.....



JOB NO.....

DATE.....PAGE.....

10147

Veins 040/80°E TOP DUMP

High Grade QV material

15-10% Py

tr cpy

wallrock silicid w/ 10+9% Py

some carb and

10148

High-High Grade Top DUMP

Grab 10cm QV's

5% Sp, 5% Py, 1% Cpy

on vein selvages

10149

Lower Dump

Carb alted + silicid

wallrock w/ Grn mica's

5% dissem py

occurs as veinlets w/

sp, cpy, chlorocite 1/2 cm

-mod talc alt

PARTY CHIEF.....

WEATHER.....



515/8689

JOB NO.....

DATE.....PAGE.....

10143

- Adit Dyma
- Highly silicified wallrock
w/ 5-10% Py
- Some serp

10144

Trench w/ 30cm Qz
and silicified wallrock
w/ 2-3% Py + Mn

330/408W
2M

10145

1M silicified zone w/
heavy Mn 1-2% Py
008/45°E

10146

Serpentinized Garnet
fol - 015/90 BK 46

PARTY CHIEF.....

WEATHER.....



10139

Pit w/ shear zone

2M wide 180/90

QV's w/ alt^d Gmstne

5-10% Py

2-3% Pyhr

10140

Very silic^d shear zone w/

180/90 w/ 5-10% Py

~2M wide

-5-10% Py - baked

10141

Text Pt rich basalt flow

w/ olivine

gentle ~ 20° dip E

10142

Adit Dump

QV 1-2% Py quite

baked - milky white

000/90° shear

10 M wide

PARTY CHIEF.....

WEATHER.....