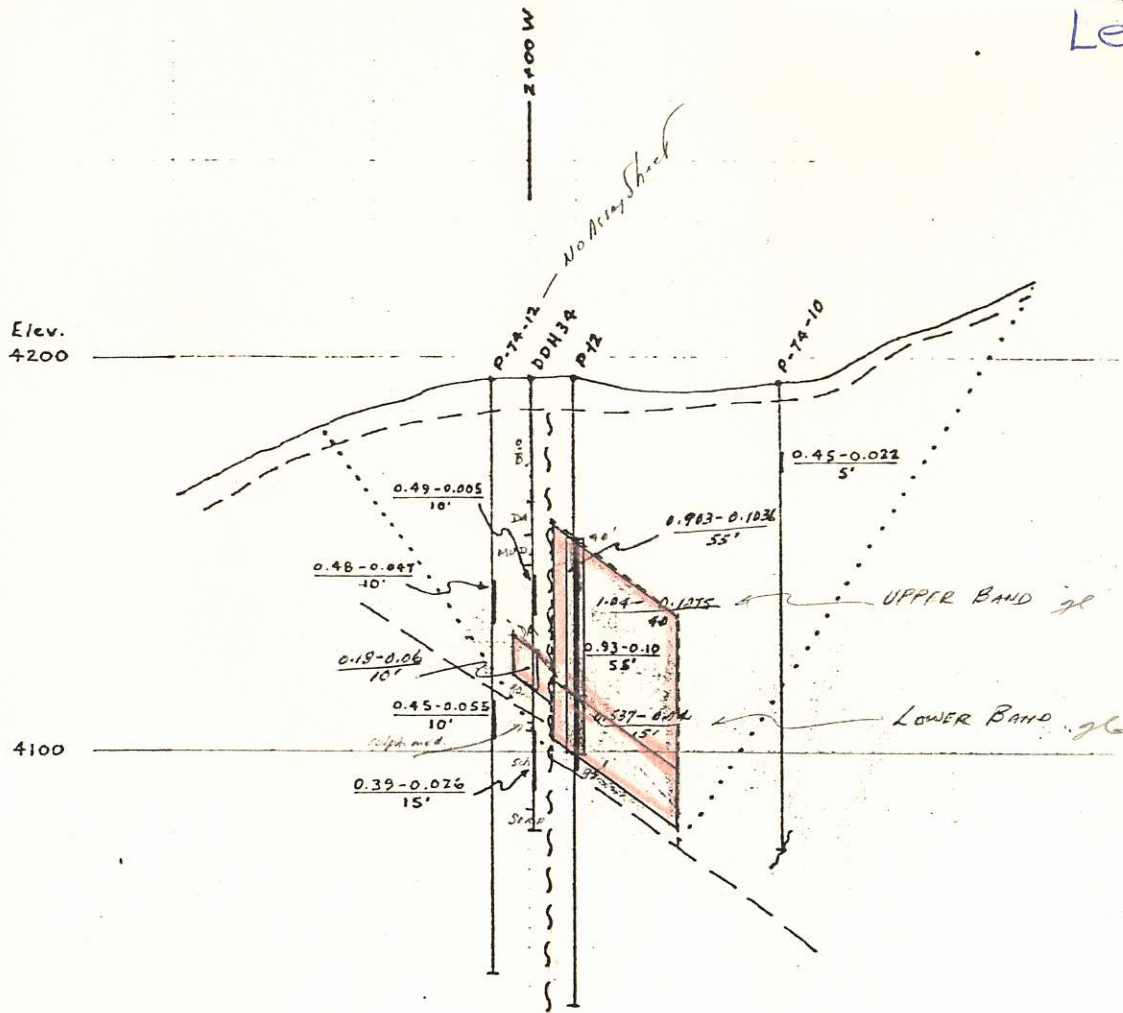


823222
Lexington



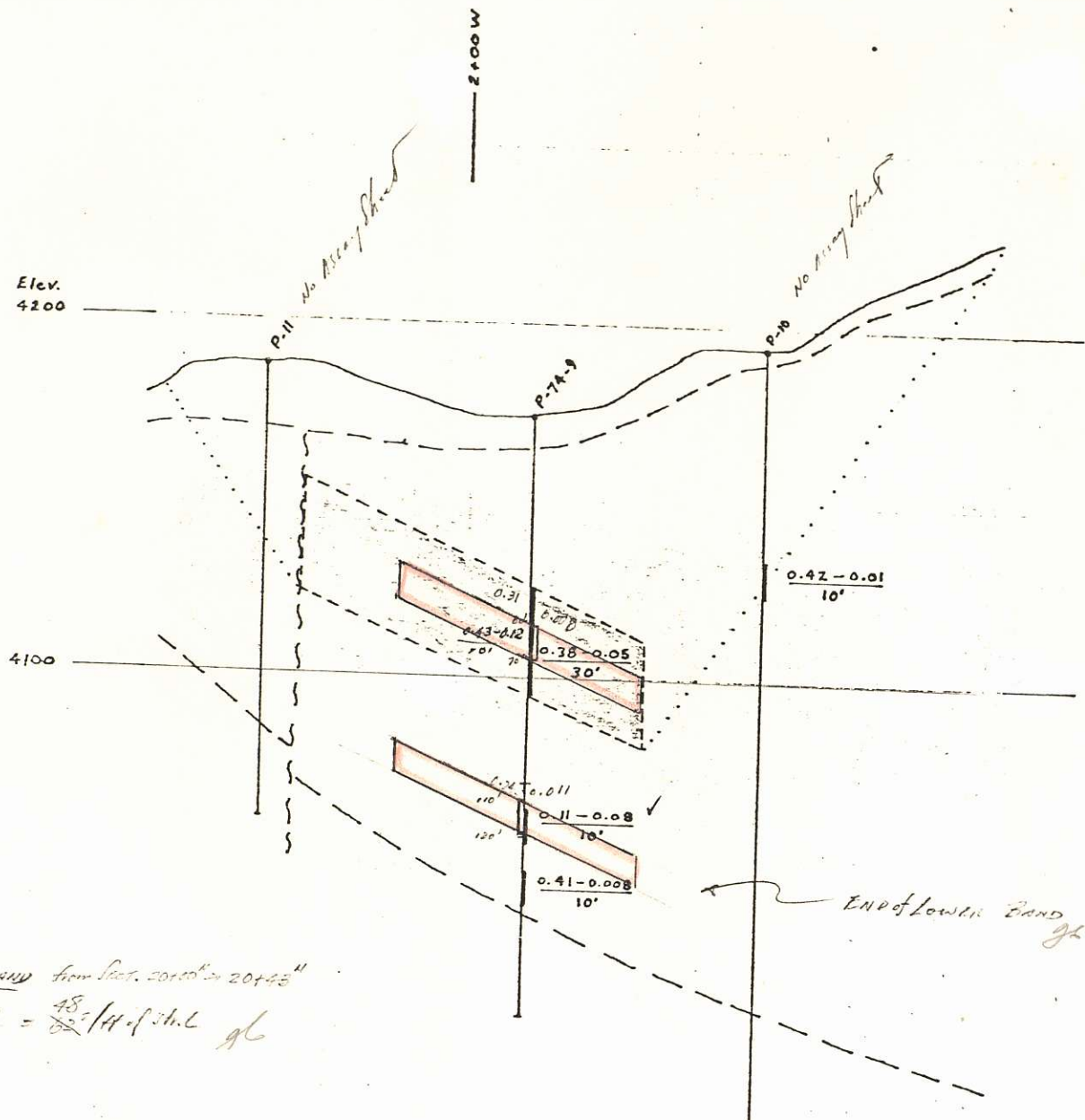
UPPER BAND

$$\frac{(55+43+33+13) \times 12}{4} = 108 \text{ ft. of L.}$$

LOWER BAND

$$\frac{(55+43+33+13) \times 12}{4} = 39 \text{ ft. of L.}$$

BLOCK I
SECTION 20+75 N



UPPER BAND from Sect. 20+10 to 20+45"
 $\frac{1}{4}(-45+65+54+76) \times 9 = \frac{48}{82} \text{ ft. of Str. L. } \text{gl}$

Lower Band
 $\frac{48}{82} \text{ ft. of Str. L. } \text{gl}$

BLOCK 2
 SECTION 20+15N

from Sta 19+44" → 20+00"

UPPER BAND

$$\frac{20.19}{11} = 1.835 \text{ ft/L}$$

$$\frac{0.39 + 0.35}{2} = 0.37 \text{ cu}$$

$$\frac{0.043 + 0.01}{2} = 0.026 \text{ Au}$$

Elev 4200

2400W

P. 74.8 SECTION 19+75"

DBH 128.29

0.37
5'

0.30
5'

0.50
5'

4100

LOWER BAND

$$\frac{60 \times 12}{11} = 65.45 \text{ ft/L}$$

DDH 1

DDH 28

DDH 29

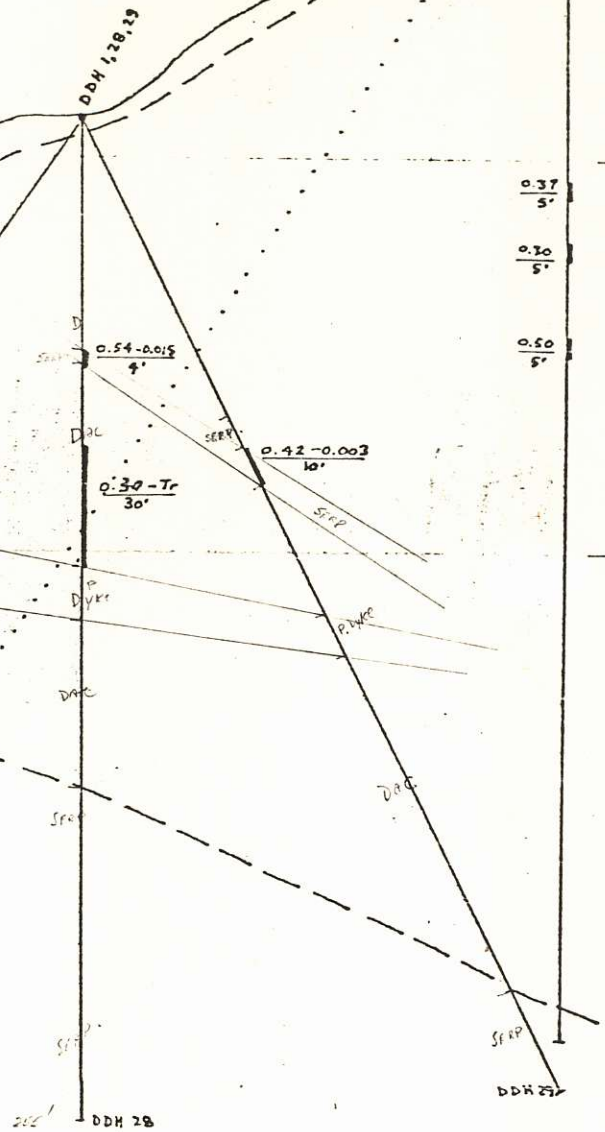
BLOCK 3
SECTION 19+90N

Ho log. No. 19+90N

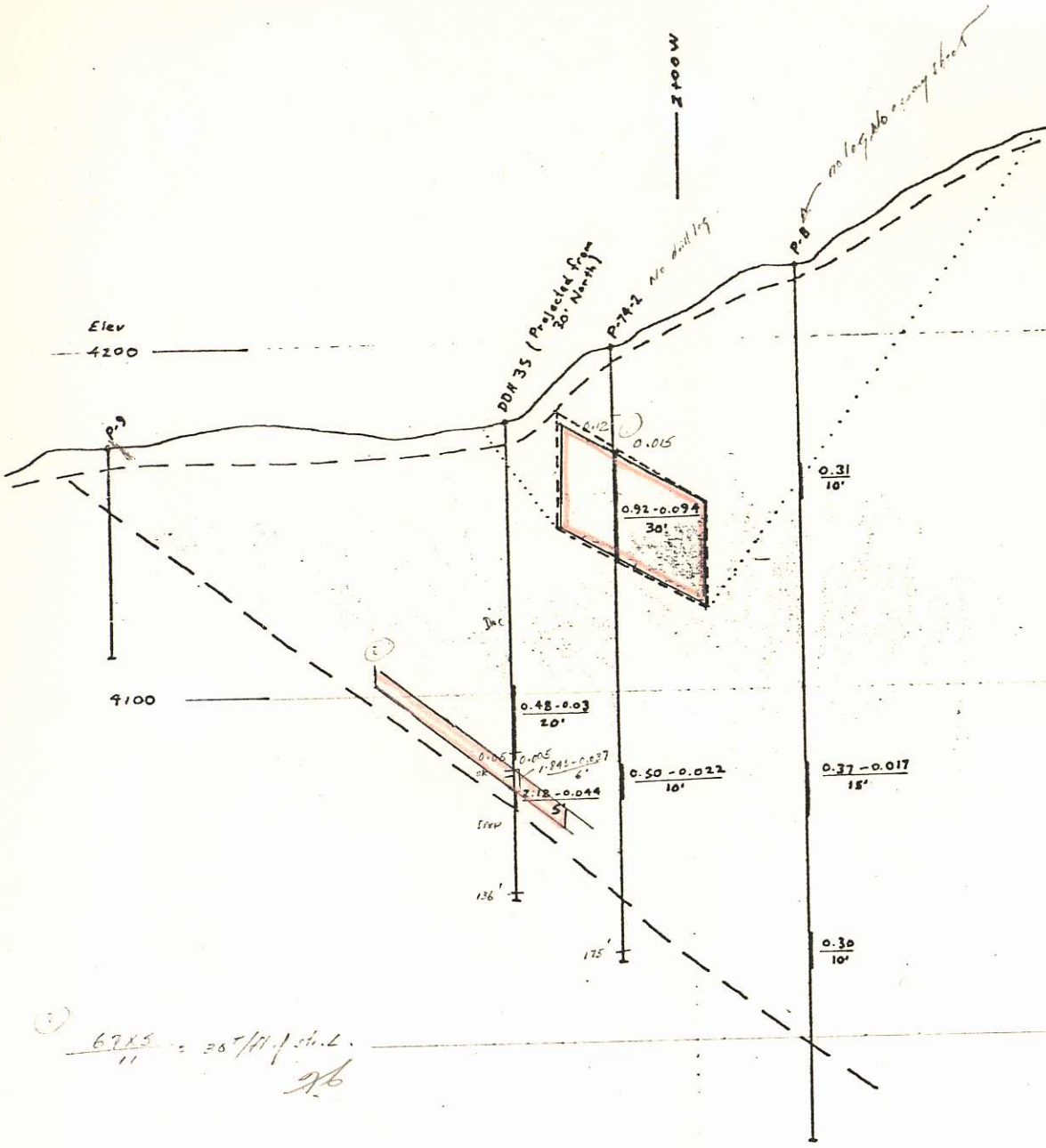
Very irregular

24
24C
11 S.P.

187.37



Handwritten notes at the bottom left corner.

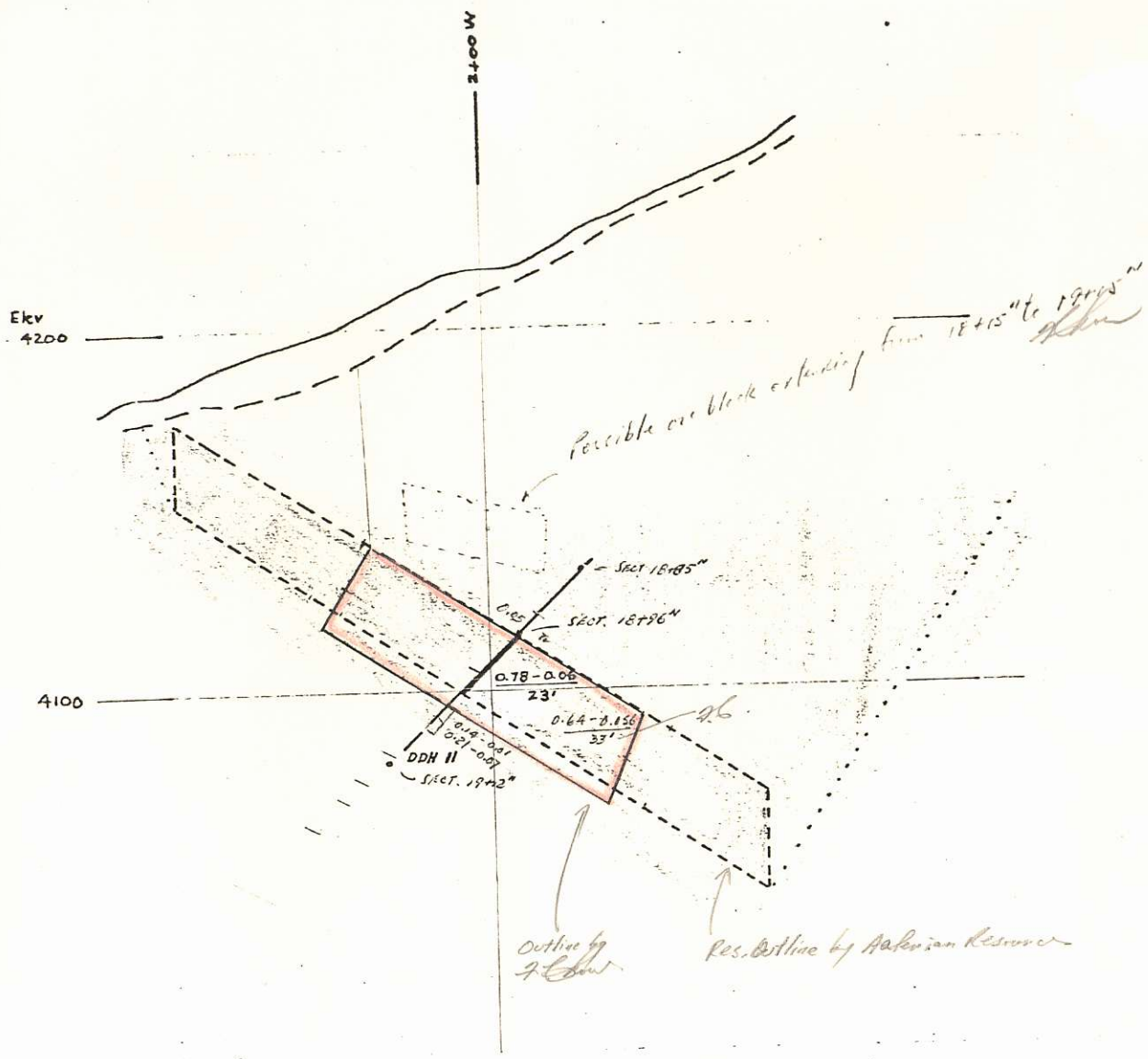


① $\frac{47 \times 26}{11} = 111 \frac{7}{11}$ ft. of soil.
 from spot 18+75 to 19+26

③ from spot 19+26 to 19+44
 $\frac{1}{11} \left[\frac{35 \times 8}{2} + \frac{(26+9)}{2} \right] = \frac{1}{11} [245 \times 25]$
 $= 50 \frac{7}{11}$ ft. of L.

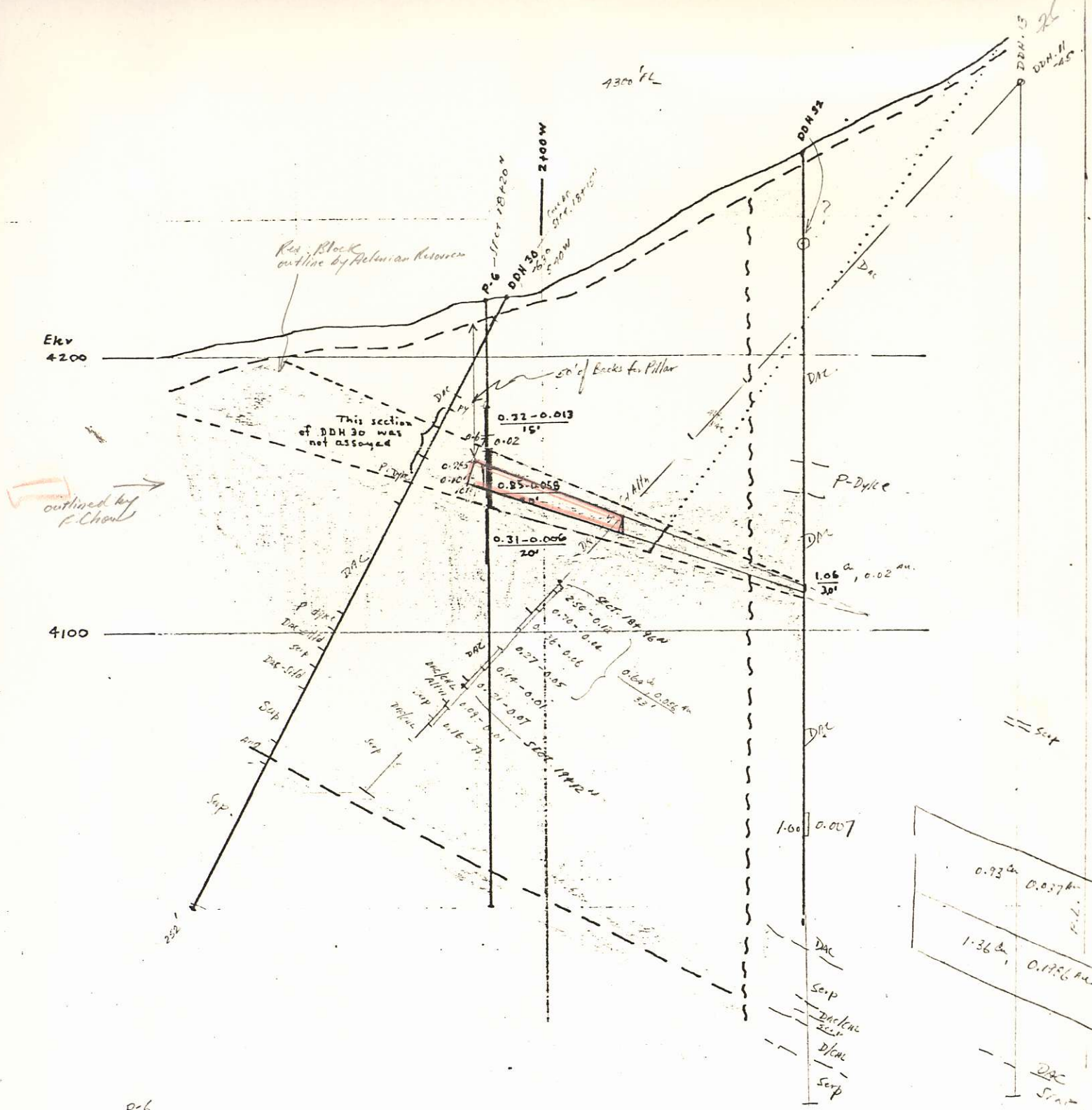
② $\frac{67 \times 9}{11} = 54 \frac{3}{11}$ ft. of soil.
 26

BLOCK 4
 SECTION 19+15 N



304-11
 $\frac{91' \times 26''}{''} = 2157/4 \text{ ft on Site.}$
 0.64ⁱⁿ, 0.156ⁱⁿ *96*

BLOCK 5
 SECTION 18+85 N



p-6
 $\frac{57 \times 7}{11} = 36.97/H$ of length of block
John

BLOCK 6
 SECTION 18+15N

* This block extends
 to Block (4)
John