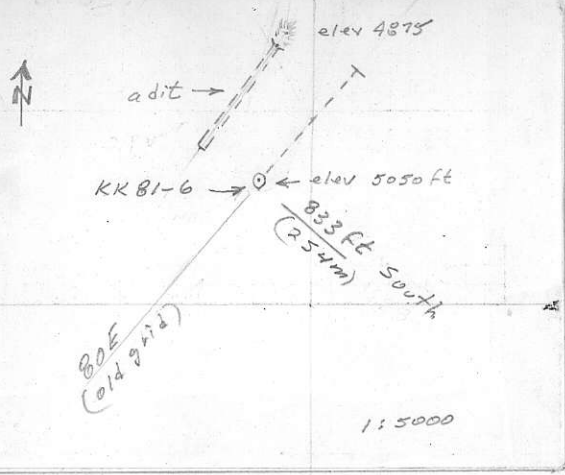
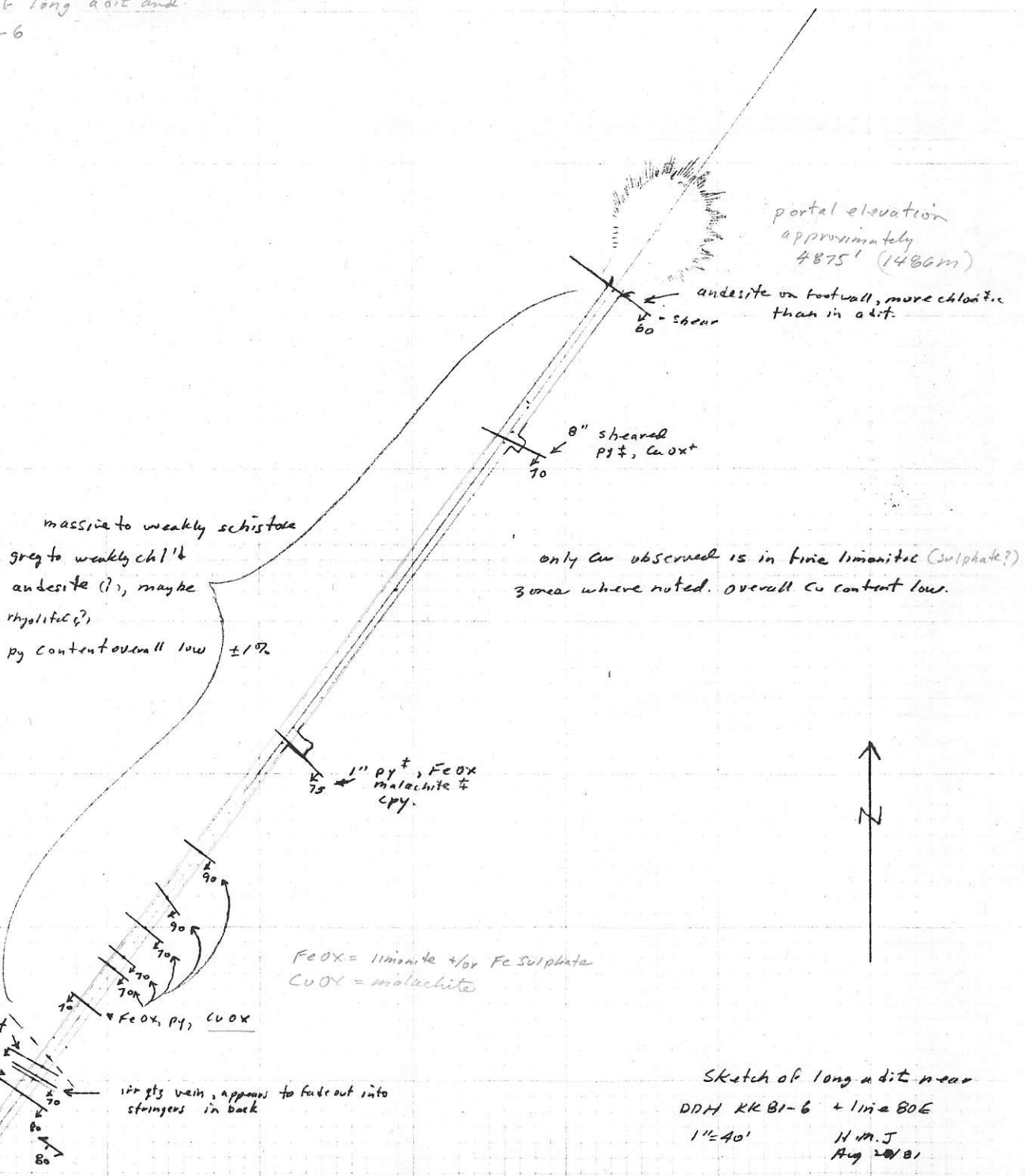


Kena
823006

Underground geology to add to
drill section KK 81-6



Location of long adit and
hole KK 81-6



massive to weakly schistose
grey to weakly chl'd
andesite (?), maybe
rhyolitic?
py content overall low $\pm 1\%$

only Cu observed is in fine limonitic (sulphate?)
zone where noted. Overall Cu content low.

Sketch of long adit near
DDH KK 81-6 + line 80E
1"=40'
H.M.J
Aug 20/81

Memo to: Bill Sivola
From: Harold Jones
Subject: Bull dozer time

Sept 1/81

I checked my diary and found the following references to bull dozing.

- August 6th - approximately 60 hours to date - From Theo Shaw.
August 7th - approximately 5 1/2 hours - building two drill sites. ^{KK 81-2,3}
August 10th - one day - preparing sites KK 81-4, 6 + start 5
? August 13th - one day - finish site 5, start road to 81-7 - Swampen
on cleanup.
August 14th - one day - finish road to 81-7, widened sites 81-5 & 6,
started road to 81-9 - Swampen on property (?)
August 18 - one day - finished road + set-up 81-9, made road
& set-up for 81-20. Made log culvert on road
to 81-7. Swampen on property
August 22 - approximately 7 hrs - moving drill equipment to truck
loading ramp near "gold anomaly" area

Skidder - used to move diamond drill. Estimate 2-3 hours
per drill move. Long moves may have taken longer. Overall
time ± 18 hours on site.

I phoned Theo Shaw re detailed billing. He will not be
home until the evening of September 3rd. Wife will make out
new billing when he gets back.

Best regards

Harold Jones

Soil Profiles

K1 - located at 430 feet N40E and 130 feet N50W of Kena 7 I.R.



Samples K1-A - just beneath moss, approx 1"-2"

K1-B - 6" deep, dark orange soil

K1-C - 10" " , dark red-brown, just above bedrock.

K2 - located 270 feet N40E and 475 feet S50E of Kena 7 post.



Samples K2-A - just beneath moss - 1"-2" - red brown soil

K2-B - 6" - red-brown residual soil

K2-C - 12" - " "

K2-D - 18" - yellow-brown decomposed bedrock

Sample site K2 moved 10' NW to present site to get away from disturbed ground (old road).